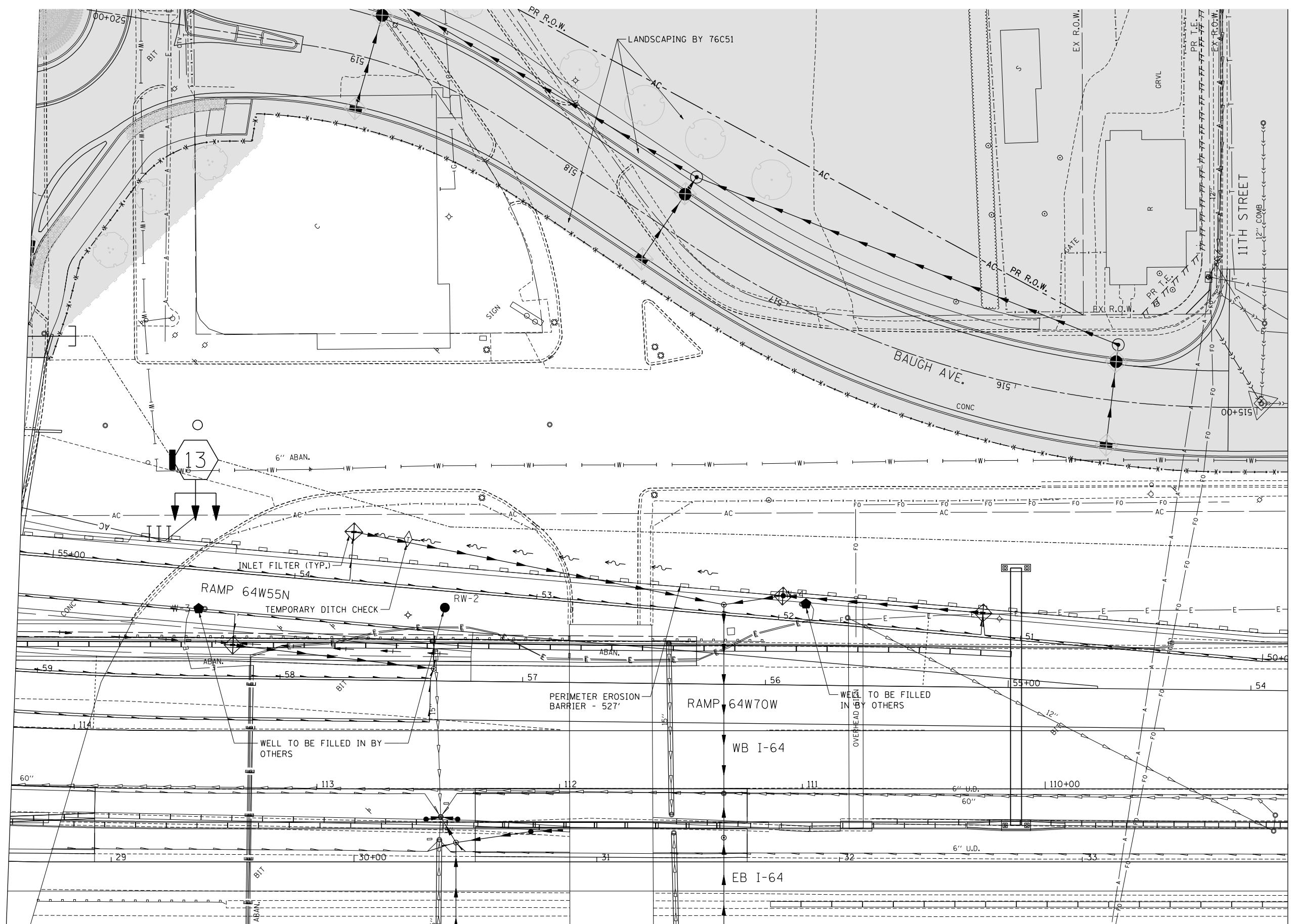
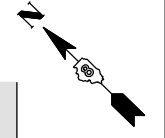


LANDSCAPING  
BY OTHERS



MATCH LINE  
STA. 114+25 RAMP 64W55S  
SEE SHEET 28

MATCH LINE  
STA. 109+00 WB I-64  
SEE SHEET 39

FILE NAME = \\FS-004\AM\VAUL\LD-TRANS\07-2202\28868-00\CIVIL\CA0\99-ALL-CONTRACTS\TRI\SHEETS CONTRACT 76F71\08TRI-71-SHT-LANDSCAP2-616.DGN  
 \DBTRI-71-LAYOUT\LDGN... \DBCONN-99-MOTIF\LDGN... \DBTRI-76C52-MOTIF\LDGN... \DBTRI-76C51-MOTIF\LDGN... \DBTRI-36-LANDSCAP\LDGN... \DBTRI-48-LANDSCAP\LDGN... \DBTRI-37-LANDSCAP\LDGN... \DBTRI-48-LANDSCAP\LDGN... \DBTRI-71-LANDSCAP\LDGN...  
 BONDHUJO

FILE NAME =	USER NAME = *USER*	DESIGNED - JM	REVISED -
*FILEL#		DRAWN - MDN	REVISED -
	PLOT SCALE = *SCALE*	CHECKED - JB	REVISED -
	PLOT DATE = *DATE*	DATE - 10/05/12	REVISED -

**STATE OF ILLINOIS  
DEPARTMENT OF TRANSPORTATION**

**PROPOSED LANDSCAPING PLANS  
WESTBOUND I-64 1**

SCALE: 1"=20'      SHEET NO. 16 OF 21 SHEETS      STA.      TO STA.

F.A.I. RTE.	SECTION	COUNTY	TOTAL SHEETS	SHEET NO.
64	82-1-RIALS	ST. CLAIR	83	38
FED. ROAD DIST. NO.      ILLINOIS FED. AID PROJECT			CONTRACT NO. 76F71	

