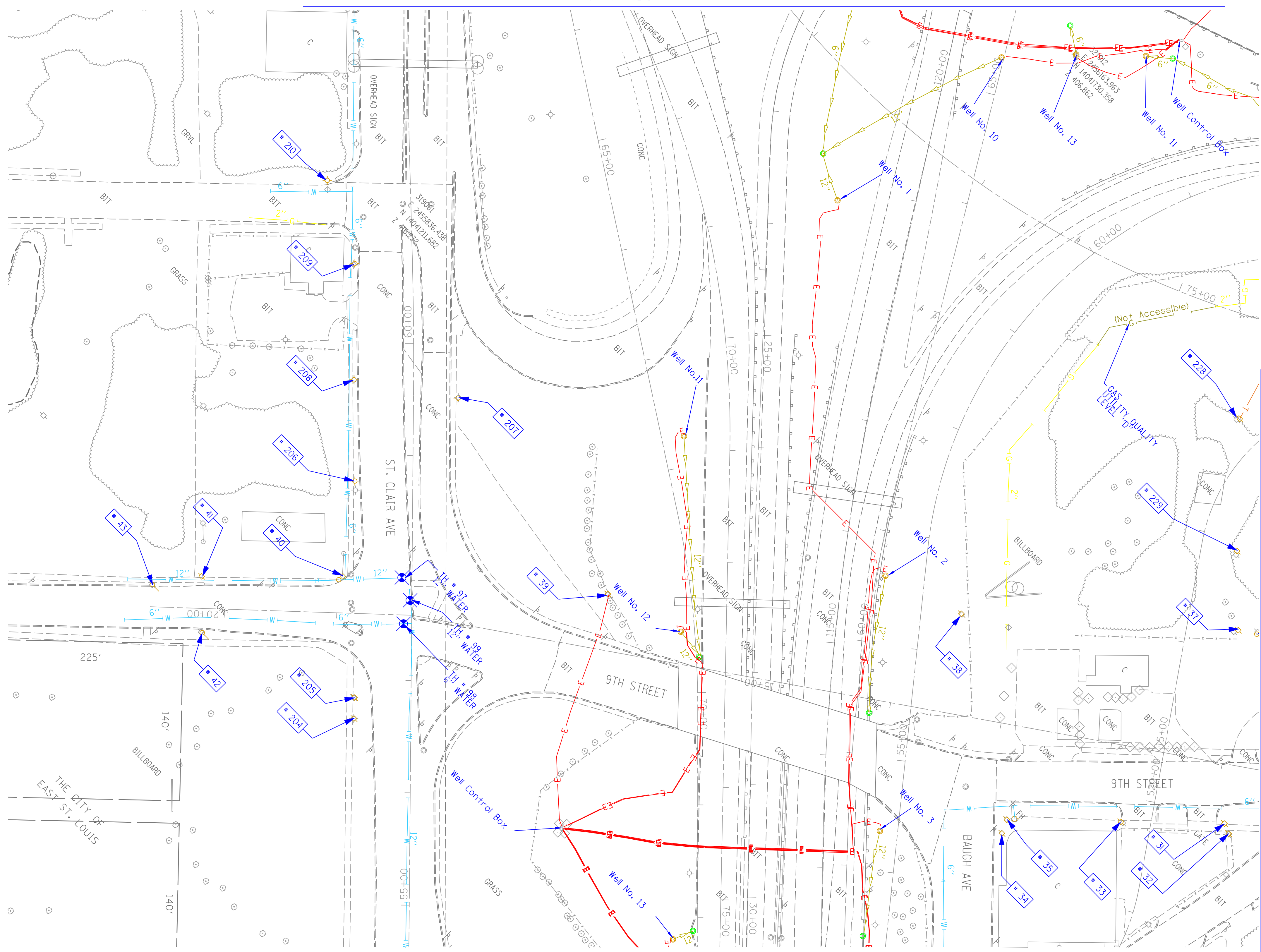
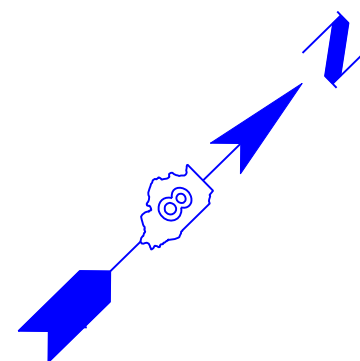


TBE Pole Number	Approximate Location	Identification # on Pole	Utilities Attached to Poles	Utility Owners	Notes: Additional Items Attached to Poles
31	276' W OF BOWMAN & 9TH ST. (15' SOUTH OF CURB)	18979 21 1107 755	ELECTRIC, FIBER OPTIC, CATV, TELEPHONE	AMEREN ELECTRIC, CHARTER CABLE, AT&T	LIGHT
32	273' WEST OF BOWMAN & 9TH ST.	NO TAG	NO UTILITIES		ABANDONED POLE
33	368' WEST OF BOWMAN & 9TH ST. (135' SOUTH OF CURB)	18980	ELECTRIC	AMEREN ELECTRIC	TRANSFORMER & LIGHT / 3 GUY S TO WEST
34	SE CORNER OF BAUGH & 9TH (116' SOUTH OF CURB)	727525	ELECTRIC SERVICE	AMEREN ELECTRIC	ELECTRIC SERVICE POLE 2 LIGHTS
35	SE CORNER OF BAUGH & 9TH (130' SOUTH OF CURB)	727526	ELECTRIC SERVICE	AMEREN ELECTRIC	ELECTRIC SERVICE POLE METER
37	276' W OF BOWMAN & 9TH ST.	18977 27253	ELECTRIC, TELEPHONE	AMEREN ELECTRIC, AT&T	
38	WEST SIDE OF EAST ROW HWY64 IN BETWEEN POLE 33/39	18976	ELECTRIC	AMEREN ELECTRIC	TRANSFORMER
39	NORTH OF CURB 43' WEST OF HWY 64	18975	ELECTRIC	AMEREN ELECTRIC	TRANSFORMER, ELECTRIC DROP
40	NW OF 9TH & ST. CLAIR AVE.	18974	ELECTRIC	AMEREN ELECTRIC	GUY TO NORTH
41	NE CORNER OF ALLEY AT 9TH ST. (71' W OF ST. CLAIR & 9TH	18971	ELECTRIC	AMEREN ELECTRIC	2 GUYS TO SOUTH
42	171' WEST OF ST. CLAIR & 9TH	18973	NO UTILITIES		METAL STRIAN POLE, 2 GUY TO S HOLDING POLE 41
43	216' WEST OF ST. CLAIR & 9TH	18972	NO UTILITIES		METAL STRIAN POLE, 2 GUY TO S HOLDING POLE 41
204	SW CORNER OF 9TH ST. & ST. CLAIR	727976	ELECTRIC SERVICE	AMEREN ELECTRIC	LIGHT
205	SW CORNER OF 9TH ST. & ST. CLAIR	727977	ELECTRIC SERVICE	AMEREN ELECTRIC	METER
206	130' CL OF 9TH ST. & ST. CLAIR	727972	ELECTRIC SERVICE	AMEREN ELECTRIC	LIGHT
207	198' CL OF 9TH ST. & ST. CLAIR	727975	ELECTRIC SERVICE	AMEREN ELECTRIC	LIGHT
208	219' CL OF 9TH ST. & ST. CLAIR	727773	ELECTRIC SERVICE	AMEREN ELECTRIC	LIGHT
209	323' CL OF 9TH ST. & ST. CLAIR	727974	ELECTRIC SERVICE	AMEREN ELECTRIC	LIGHT, END OF ELECTRIC SERVICE
210	SW CORNER OF 8TH ST. & ST. CLAIR	729299	ELECTRIC SERVICE	AMEREN ELECTRIC	LIGHT
228	SOUTHEAST OF POLE #227	2475484	ELECTRIC, TELEPHONE	AMEREN ELECTRIC, AT&T	TRANSFORMER, TELEPHONE DROP
229	S.E. OF POLE #228	727528	ELECTRIC SERVICE	AMEREN ELECTRIC	

MATCH TO PAGE 23

MATCH TO PAGE 24



	UNKNOWN
	ABANDONED SANITARY
	FORCE MAIN
	FORCE MAIN (Q.L. "D")
	CABLE TV
	TELEPHONE
	GAS (Q.L. "D")
	ELECTRIC
	WATER
	WATER (Q.L. "D")
	FIBER OPTIC (Q.L. "D")
	WELL DRAINAGE
	UTILITY POLE
	TBE TEST HOLE

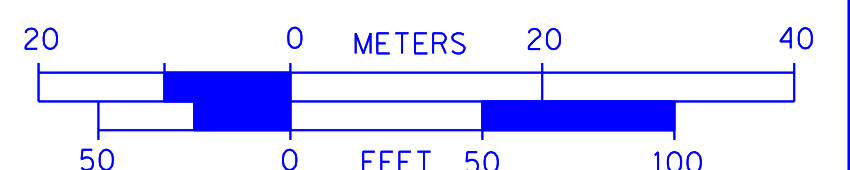
Utilities shown in color on these plans as depicted in the legend have been investigated by TBE Group, Inc in accordance with SUE Industry Standards. All other information shown has been provided to TBE Group, Inc by others. TBE's SUE field investigation was finished on 5/22/09. Changes to utilities after this date may have been made and therefore may result in variances from this plan. Consideration should be given to updating this plan if deemed advisable prior to final design and construction.

ALL UTILITIES SHOWN QUALITY LEVEL "B" UNLESS NOTED OTHERWISE.

- Utility Quality Level "A" : Test Hole
- Utility Quality Level "B" : Designating
- Utility Quality Level "C" : Research with Survey
- Utility Quality Level "D" : Records Research



TBE GROUP, INC.
 CIVIL ENGINEERING • TRANSPORTATION • ENVIRONMENTAL
 PLANNING • UTILITY ENGINEERING/LOCATING



Checked By: _____
 Date: _____

TBE Job No. IL09500601,602,603,604,
 607,608,609
 SUE Plan Page: 17 of 35

FILE NAME =	USER NAME =	DESIGNED EG, IP, LP	REVISED
#FILE#		DRAWN KLC	7/28/09 - 8/26/09 ADDED TEST HOLES #60-108
	PLOT SCALE = 1" = 50'	CHECKED JB	REVISED
	PLOT DATE = \$DATE#	DATE 9/15/09	REVISED

**STATE OF ILLINOIS
 DEPARTMENT OF TRANSPORTATION**

Mississippi River Bridge Project

SCALE: SHEET NO. STA. TO STA.

F.A. RTE.	SECTION	COUNTY	TOTAL SHEETS	SHEET NO.
		St. Clair	83	50
PTB NO. 147-038				
FED. ROAD DIST. NO. ILLINOIS Job No. D-98-061-08				