

"A"  
 FISCHER SCHEIN CO'S SUBD  
 OF LOTS 33 & 34 AND PARTS  
 OF LOTS 35, 39, & 40 OF BLOCK 17  
 ILLINOIS CITY EAST ST. LOUIS ILLS.

"B"  
 ILLINOIS CITY  
 PLAT BOOK E PAGE 301 & 302  
 RECORDED JULY 2nd 1825

PLAT BOOK P PAGE 56  
 RECORDED 27th JULY 1910

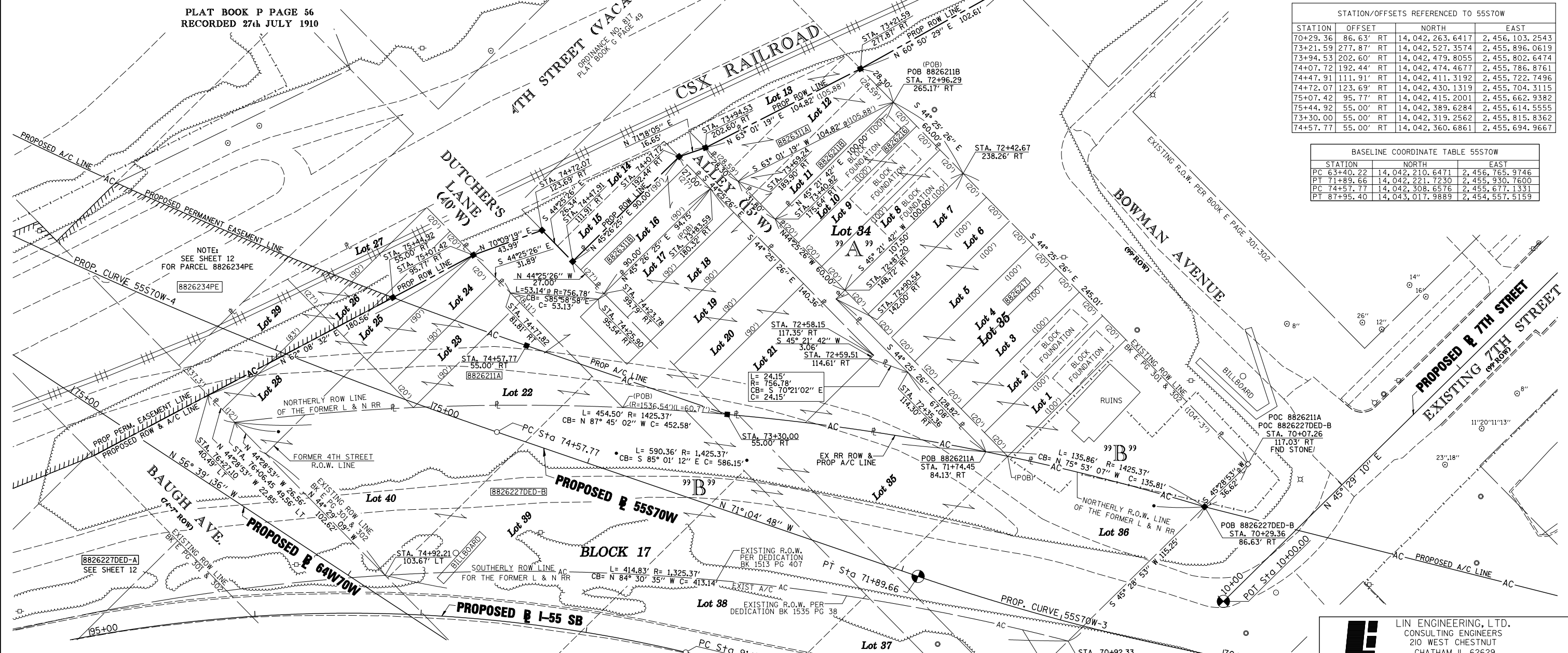
PROP. CURVE 55S70W-3  
 PI STA. = 67+79.76  
 Δ = 36° 19' 13" (RT)  
 T = 439.54'  
 L = 849.44'  
 R = 1,340.00'  
 C = 835.29'  
 C.B. = N 89° 14' 25" W  
 P.C. STA = 63+40.22  
 P.T. STA = 71+89.66

PROP. CURVE 55S70W-4  
 PI STA. = 81+39.12  
 Δ = 26° 52' 21" (RT)  
 T = 681.35'  
 L = 1,337.63'  
 R = 2,852.00'  
 C = 1,325.40'  
 C.B. = N 57° 38' 38" W  
 P.C. STA = 74+57.77  
 P.T. STA = 87+95.40



STATION/OFFSETS REFERENCED TO 55S70W				
STATION	OFFSET	NORTH	EAST	
70+29.36	86.63' RT	14,042,263.6417	2,456,103.2543	
73+21.59	277.87' RT	14,042,527.3574	2,455,896.0619	
73+94.53	202.60' RT	14,042,479.8055	2,455,802.6474	
74+07.72	192.44' RT	14,042,474.4677	2,455,786.8761	
74+47.91	111.91' RT	14,042,411.3192	2,455,722.7496	
74+72.07	123.69' RT	14,042,430.1319	2,455,704.3115	
75+07.42	95.77' RT	14,042,415.2001	2,455,662.9382	
75+44.92	55.00' RT	14,042,389.6284	2,455,614.5555	
73+30.00	55.00' RT	14,042,319.2562	2,455,815.8362	
74+57.77	55.00' RT	14,042,360.6861	2,455,694.9667	

BASELINE COORDINATE TABLE 55S70W			
STATION	NORTH	EAST	
PC 63+40.22	14,042,210.6471	2,456,765.9746	
PT 71+89.66	14,042,221.7230	2,455,930.7600	
PC 74+57.77	14,042,308.6576	2,455,677.1331	
PT 87+95.40	14,043,017.9889	2,454,557.5159	



NOTE:  
 SEE SHEET 12 FOR PARCELS 882622DED-A  
 & 882622DED-B PARCEL TABLE INFORMATION

PARCEL NO.	OWNER	TOTAL HOLDING ACRES	FEE SIMPLE ACQUISITION		REMAINDER ACRES	PERMANENT TAX NUMBER	PROPERTY ACQUIRED BY
			GROSS ACRES	SQ. FT.			
8826211	CSX TRANSPORTATION, INC. TITLE REPORT NO. SC-5633.3, SC-5456.0 & SC-5438.0 BK 2542 PG 2128-2130, BK 2508 PG 662, BK 2509 PG 2300, BK 2509 PG 2347, BK 1055 PG 187	0.7466	A=0.7101 B=0.0365	A=30,934 B=1,590		02-07.0-306-017 02-07.0-306-018 02-07.0-306-019 02-07.0-306-020 02-07.0-306-021 02-07.0-306-022 02-07.0-306-023 02-07.0-306-024 02-07.0-500-004(p1)	
8826216	MID AMERICA REAL ESTATE & DEVELOPMENT, INC. TITLE REPORT NO. SC-5461.0 BOOK 3625 PAGE 1907 & BOOK 3320 PAGE 1474	0.1377	0.1377	6,000	0.0000	02-07.0-306-037	
8826217	ARROW REALTY INC. TITLE REPORT NO. SC-5462.0 BOOK 3324 PAGE 951	0.5066	0.5066	22,070	0.0000	02-07.0-306-038	
8826311	CITY OF EAST ST. LOUIS, ST. CLAIR COUNTY, ILLINOIS TITLE REPORT NO. SC-5425.0, BOOK 1054 PAGE 296	0.1208	A=0.0650 B=0.0558	A=2,830 B=2,430	0.0000	NONE	

\* SEE TOTAL HOLDING AREA  
 SOURCE TABLE ON SHEET 2

STATE OF ILLINOIS )  
 ) SS  
 COUNTY OF SANGAMON )

I, GEORGE L. WOODS, AN ILLINOIS PROFESSIONAL LAND SURVEYOR,  
 STATE THAT I HAVE SURVEYED OR DIRECTED THE SURVEY OF THE PLAT  
 OF HIGHWAY SHOWN HEREON AND THAT THIS PROFESSIONAL SERVICE CONFORMS  
 TO THE CURRENT ILLINOIS MINIMUM STANDARDS FOR A BOUNDARY SURVEY FOR THE  
 PROPOSED PARCEL(S) TO BE ACQUIRED BY THE STATE OF ILLINOIS, DEPARTMENT OF  
 TRANSPORTATION, SHOWN HEREON.



DATED \_\_\_\_\_  
 GEORGE L. WOODS, PLS NO. 3015  
 LICENSE EXPIRATION DATE: 11/30/2010

SPACE RESERVED FOR RECORDING OFFICER

**LE** LIN ENGINEERING, LTD.  
 CONSULTING ENGINEERS  
 210 WEST CHESTNUT  
 CHATHAM, IL 62629  
 PROFESSIONAL DESIGN FIRM NO. 184-001181  
 PHONE: (217)-483-4168 FAX: (217)-483-4706

ILLINOIS DEPARTMENT OF TRANSPORTATION  
 PLAT OF HIGHWAYS  
 FAP ROUTE 998  
 SECTION N/A  
 ST. CLAIR COUNTY  
 JOB NO. R-98-026-08

STATION 70+07.26 TO STATION 76+27.10 (55S70W)  
 SCALE: 1" = 30'  
 SHEET 14 OF 35

F.A.P. RTE.	SECTION	COUNTY	TOTAL SHEETS	SHEET NO.
998	N/A	ST. CLAIR	83	62

ILLINOIS DEPARTMENT OF TRANSPORTATION  
 DIVISION OF HIGHWAYS/REGION 5/DISTRICT 8  
 1102 EASTPORT PLAZA DRIVE  
 COLLINSVILLE, ILLINOIS 62234-6198

COMPLETION DATE OF FIELD WORK PERFORMED \_\_\_\_\_  
 LAND SURVEY: OCT./2009 ROW STAKING: OCT./2009

FED. ROAD DIST. NO. [ ] ILLINOIS FED. AID PROJECT

PLOT DATE = 10/19/2009  
 FILE NAME = \$FILES\$  
 PLOT SCALE = \$SCALES\$  
 USER NAME = \$USERS\$