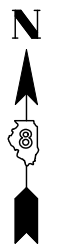


PART OF THE SW 1/4 OF SECTION 7, T2N, R9W OF THE 3RD PM, ST. CLAIR COUNTY, ILLINOIS



PROP. CURVE 64W55S-2  
 PI STA. = 126+23.96  
 $\Delta = 69^\circ 27' 35''$  (LT)  
 D = 7° 34' 58"  
 R = 755.61'  
 T = 523.79'  
 L = 916.03'  
 E = 163.79'  
 P.C. STA. = 121+00.17  
 P.T. STA. = 130+16.20

PROP. CURVE 64W55S-3  
 PI STA. = 131+97.14  
 $\Delta = 17^\circ 49' 53''$  (LT)  
 D = 4° 58' 04"  
 R = 1,153.36'  
 T = 180.94'  
 L = 358.95'  
 E = 14.11'  
 P.C. STA. = 130+16.20  
 P.T. STA. = 133+75.15

PROP. CURVE 55N64E-2  
 PI STA. = 57+08.92  
 $\Delta = 2^\circ 17' 42''$  (RT)  
 D = 1° 08' 45"  
 R = 5,000.00'  
 T = 100.16'  
 L = 200.29'  
 E = 1.00'  
 P.C. STA. = 56+08.76  
 P.T. STA. = 58+09.05

PROP. CURVE 55N-2  
 PI STA. = 62+39.34  
 $\Delta = 10^\circ 09' 06''$  (LT)  
 D = 1° 50' 43"  
 R = 3,105.00'  
 T = 275.79'  
 L = 550.14'  
 E = 12.22'  
 P.C. STA. = 59+63.55  
 P.T. STA. = 65+13.69

PROP. CURVE RAMPJ-1  
 PI STA. = 15+76.18  
 $\Delta = 99^\circ 13' 34''$  (LT)  
 D = 52° 05' 13"  
 R = 110.00'  
 T = 129.31'  
 L = 190.50'  
 E = 59.77'  
 P.C. STA. = 14+46.88  
 P.T. STA. = 16+37.38

PROP. CURVE RAMPJ-2  
 PI STA. = 17+17.62  
 $\Delta = 71^\circ 12' 54''$  (LT)  
 D = 51° 07' 48"  
 R = 112.06'  
 T = 80.25'  
 L = 139.28'  
 E = 25.77'  
 P.C. STA. = 16+37.38  
 P.T. STA. = 17+76.66

PROP. CURVE RAMPJ-3  
 PI STA. = 22+83.56  
 $\Delta = 6^\circ 23' 44''$  (LT)  
 D = 2° 39' 52"  
 R = 2,150.42'  
 T = 120.15'  
 L = 240.04'  
 E = 3.35'  
 P.C. STA. = 21+63.42  
 P.T. STA. = 24+03.46

PROP. CURVE RAMP I-1  
 PI STA. = 14+30.63  
 $\Delta = 117^\circ 56' 48''$  (RT)  
 D = 63° 39' 43"  
 R = 90.00'  
 T = 149.63'  
 L = 185.27'  
 E = 84.61'  
 P.C. STA. = 12+81.01  
 P.T. STA. = 14+66.28

PROP. CURVE RAMP I-2  
 PI STA. = 17+79.67  
 $\Delta = 13^\circ 22' 38''$  (LT)  
 D = 5° 43' 46"  
 R = 1,000.00'  
 T = 117.27'  
 L = 233.47'  
 E = 6.85'  
 P.C. STA. = 16+62.40  
 P.T. STA. = 18+95.88

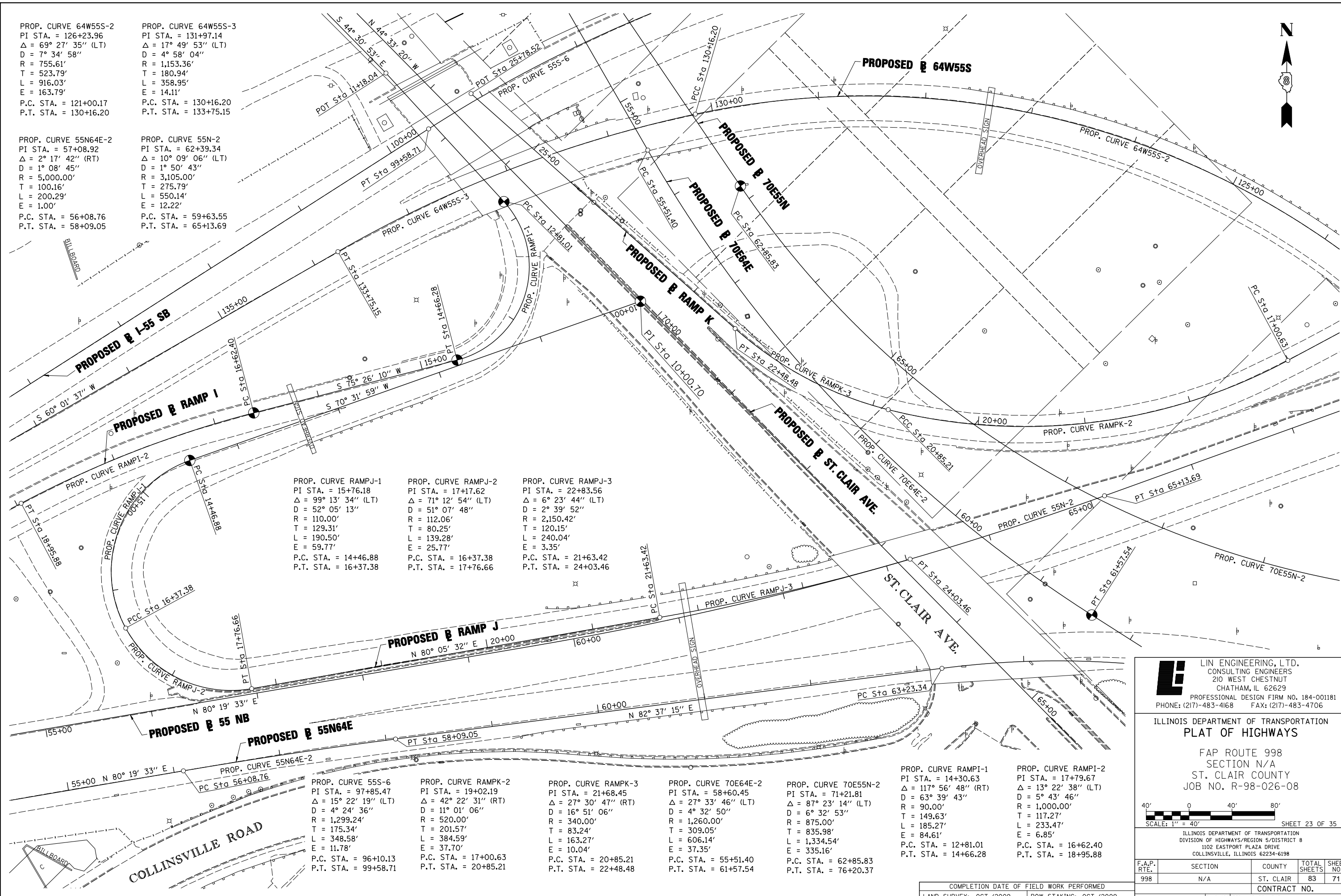
PROP. CURVE 55S-6  
 PI STA. = 97+85.47  
 $\Delta = 15^\circ 22' 19''$  (LT)  
 D = 4° 24' 36"  
 R = 1,299.24'  
 T = 175.34'  
 L = 348.58'  
 E = 11.78'  
 P.C. STA. = 96+10.13  
 P.T. STA. = 99+58.71

PROP. CURVE RAMPK-2  
 PI STA. = 19+02.19  
 $\Delta = 42^\circ 22' 31''$  (RT)  
 D = 11° 01' 06"  
 R = 520.00'  
 T = 201.57'  
 L = 384.59'  
 E = 37.70'  
 P.C. STA. = 17+00.63  
 P.T. STA. = 20+85.21

PROP. CURVE RAMPK-3  
 PI STA. = 21+68.45  
 $\Delta = 27^\circ 30' 47''$  (RT)  
 D = 16° 51' 06"  
 R = 340.00'  
 T = 83.24'  
 L = 163.27'  
 E = 10.04'  
 P.C. STA. = 20+85.21  
 P.T. STA. = 22+48.48

PROP. CURVE 70E64E-2  
 PI STA. = 58+60.45  
 $\Delta = 27^\circ 33' 46''$  (LT)  
 D = 4° 32' 50"  
 R = 1,260.00'  
 T = 309.05'  
 L = 606.14'  
 E = 37.35'  
 P.C. STA. = 55+51.40  
 P.T. STA. = 61+57.54

PROP. CURVE 70E55N-2  
 PI STA. = 71+21.81  
 $\Delta = 87^\circ 23' 14''$  (LT)  
 D = 6° 32' 53"  
 R = 875.00'  
 T = 835.98'  
 L = 1,334.54'  
 E = 335.16'  
 P.C. STA. = 62+85.83  
 P.T. STA. = 76+20.37



PLOT DATE = 10/19/2009  
 FILE NAME = #FILE#  
 PLOT SCALE = #SCALE#  
 USER NAME = #USER#

**Lin Engineering, Ltd.**  
 CONSULTING ENGINEERS  
 210 WEST CHESTNUT  
 CHATHAM, IL 62629  
 PROFESSIONAL DESIGN FIRM NO. 184-001181  
 PHONE: (217)-483-4168 FAX: (217)-483-4706

ILLINOIS DEPARTMENT OF TRANSPORTATION  
**PLAT OF HIGHWAYS**

FAP ROUTE 998  
 SECTION N/A  
 ST. CLAIR COUNTY  
 JOB NO. R-98-026-08

SCALE: 1" = 40'

SHEET 23 OF 35

ILLINOIS DEPARTMENT OF TRANSPORTATION  
 DIVISION OF HIGHWAYS/REGION 5/DISTRICT 8  
 1102 EASTPORT PLAZA DRIVE  
 COLLINSVILLE, ILLINOIS 62234-6198

F.A.P. RTE.	SECTION	COUNTY	TOTAL SHEETS	SHEET NO.
998	N/A	ST. CLAIR	83	71

COMPLETION DATE OF FIELD WORK PERFORMED  
 LAND SURVEY: OCT./2009 ROW STAKING: OCT./2009

FED. ROAD DIST. NO. ILLINOIS FED. AID PROJECT