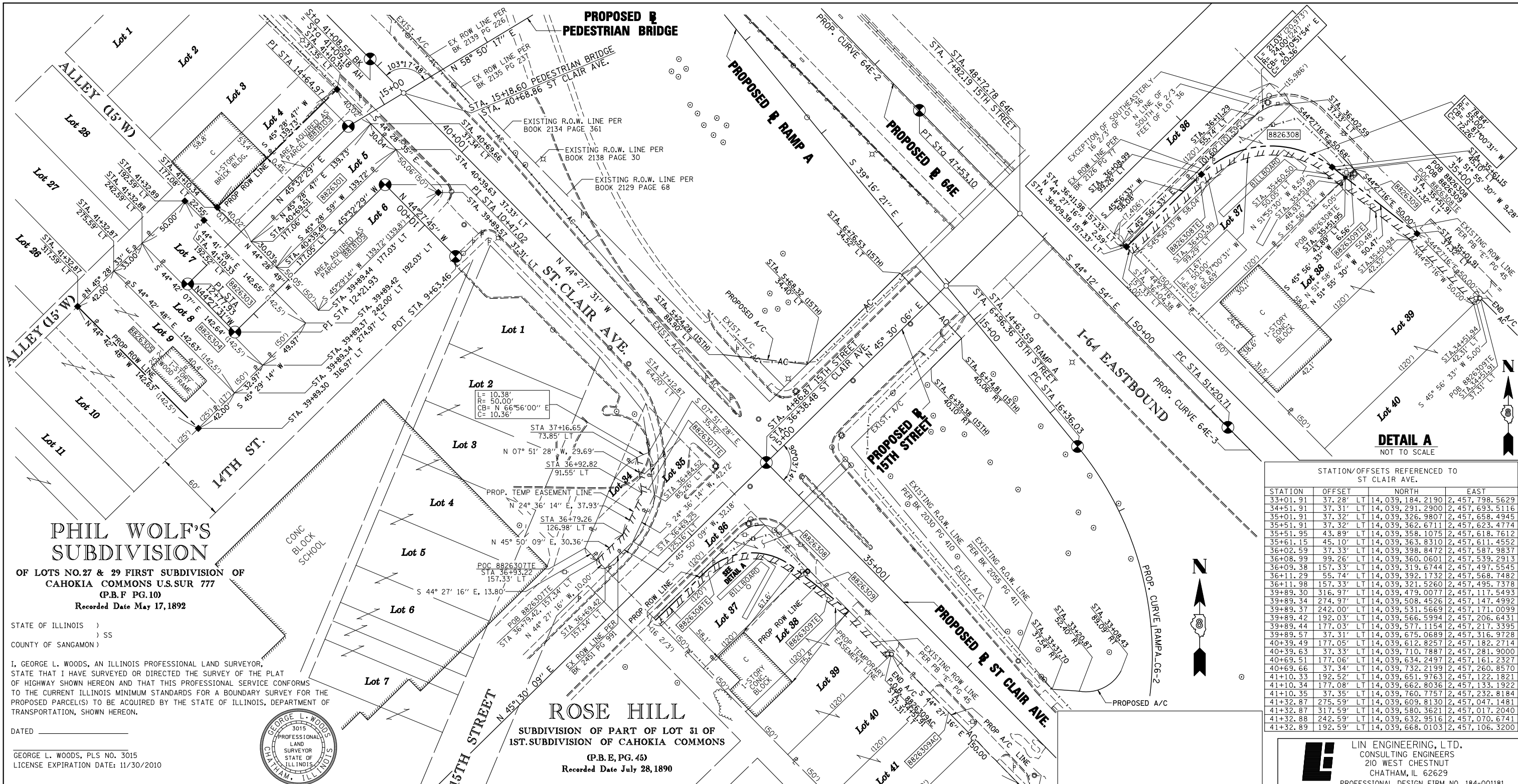


PART OF THE NW 14 OF SECTION 18, T2N, R9W OF THE 3RD PM, ST. CLAIR COUNTY, ILLINOIS



**PHIL WOLF'S SUBDIVISION**

OF LOTS NO. 27 & 29 FIRST SUBDIVISION OF CAHOKIA COMMONS U.S.SUR 777 (P.B.F PG. 10)  
Recorded Date May 17, 1892

STATE OF ILLINOIS )  
                                  ) SS  
COUNTY OF SANGAMON )

I, GEORGE L. WOODS, AN ILLINOIS PROFESSIONAL LAND SURVEYOR, STATE THAT I HAVE SURVEYED OR DIRECTED THE SURVEY OF THE PLAT OF HIGHWAY SHOWN HEREON AND THAT THIS PROFESSIONAL SERVICE CONFORMS TO THE CURRENT ILLINOIS MINIMUM STANDARDS FOR A BOUNDARY SURVEY FOR THE PROPOSED PARCEL(S) TO BE ACQUIRED BY THE STATE OF ILLINOIS, DEPARTMENT OF TRANSPORTATION, SHOWN HEREON.



DATED \_\_\_\_\_  
GEORGE L. WOODS, PLS NO. 3015  
LICENSE EXPIRATION DATE: 11/30/2010

**ROSE HILL**  
SUBDIVISION OF PART OF LOT 31 OF 1ST. SUBDIVISION OF CAHOKIA COMMONS (P.B.E, PG. 45)  
Recorded Date July 28, 1890

STATION/OFFSETS REFERENCED TO ST CLAIR AVE.

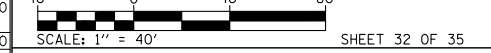
STATION	OFFSET	NORTH	EAST
33+01.91	37.28' LT	14,039,184.2190	2,457,798.5629
34+51.91	37.31' LT	14,039,291.2900	2,457,693.5116
35+01.91	37.32' LT	14,039,326.9807	2,457,658.4945
35+51.91	37.32' LT	14,039,362.6711	2,457,623.4774
35+51.95	43.89' LT	14,039,358.1075	2,457,618.7612
35+61.15	45.10' LT	14,039,363.8310	2,457,611.4552
36+02.59	37.33' LT	14,039,398.8472	2,457,587.9837
36+08.99	99.26' LT	14,039,360.0601	2,457,539.2913
36+09.38	157.33' LT	14,039,319.6744	2,457,497.5545
36+11.29	55.74' LT	14,039,392.1732	2,457,568.7482
36+11.98	157.33' LT	14,039,321.5260	2,457,495.7378
39+89.30	316.97' LT	14,039,478.0077	2,457,117.5493
39+89.34	274.97' LT	14,039,508.4526	2,457,147.4992
39+89.37	242.00' LT	14,039,531.5669	2,457,171.0099
39+89.42	192.03' LT	14,039,566.5994	2,457,206.6431
39+89.44	177.03' LT	14,039,577.1154	2,457,217.3395
39+89.57	37.31' LT	14,039,675.0689	2,457,316.9728
40+39.49	177.05' LT	14,039,612.8257	2,457,182.2714
40+39.63	37.33' LT	14,039,710.7887	2,457,281.9000
40+69.51	177.06' LT	14,039,634.2497	2,457,161.2327
40+69.66	37.34' LT	14,039,732.2199	2,457,260.8570
41+10.33	192.52' LT	14,039,651.9763	2,457,122.1821
41+10.34	177.08' LT	14,039,662.8036	2,457,133.1922
41+10.35	37.35' LT	14,039,760.7757	2,457,232.8184
41+32.87	275.59' LT	14,039,609.8130	2,457,047.1481
41+32.88	317.59' LT	14,039,580.3621	2,457,017.2040
41+32.88	242.59' LT	14,039,632.9516	2,457,070.6741
41+32.89	192.59' LT	14,039,668.0103	2,457,106.3200

**LINE ENGINEERING, LTD.**  
CONSULTING ENGINEERS  
210 WEST CHESTNUT  
CHATHAM, IL 62629  
PROFESSIONAL DESIGN FIRM NO. 184-001181  
PHONE: (217)-483-4168 FAX: (217)-483-4706

ILLINOIS DEPARTMENT OF TRANSPORTATION  
**PLAT OF HIGHWAYS**

FAP ROUTE 998  
SECTION 82-1-HBR & 82-1-2HB  
ST. CLAIR COUNTY  
JOB NO. R-98-026-08

STATION 33+01.91 TO STATION 41+32.89 (ST. CLAIR AVE.)



ILLINOIS DEPARTMENT OF TRANSPORTATION  
DIVISION OF HIGHWAYS/REGION 5/DISTRICT 8  
1102 EASTPORT PLAZA DRIVE  
COLLINGSVILLE, ILLINOIS 62234-6198

F.A.P. RTE.	SECTION	COUNTY	TOTAL SHEETS	SHEET NO.
998	82-1-HBR & 82-1-2HB	ST. CLAIR	83	80

CONTRACT NO. \_\_\_\_\_  
FED. ROAD DIST. NO. \_\_\_\_\_ ILLINOIS FED. AID PROJECT

PARCEL NO.	OWNER	TOTAL HOLDING ACRES	FEE SIMPLE ACQUISITION		REMAINDER ACRES	EASEMENTS		PERMANENT TAX NUMBER	PROPERTY ACQUIRED BY
			GROSS ACRES	SQ. FT.		PE = PERMANENT ACRES	TE = TEMPORARY ACRES		
8818103**	AMANDA REYNOLDS TITLE REPORT NO. SC-3590.0	0.1284	0.1284	5,592	0.00			02-18-0-110-039	BK 4086 PG 1552-1554 A01868078
8818105**	VIOLA B. SPEARMAN-BIGGERS TITLE REPORT NO. SC-3736.0	0.1606	0.1606	6,994	0.00			02-18-110-008	BK 4214 PG 1312-1314 A01924432
8826301	ST. CLAIR COUNTY AS TRUSTEE TITLE REPORT NO. SC-5442.0 DOCUMENT NO. A02121463	0.0963	0.0963	4,196	0.00			02-18-0-110-007	
8826303	THE HOUSING AUTHORITY OF THE CITY OF EAST ST. LOUIS TITLE REPORT NO. SC-5624.0 BOOK 2293 PAGES 473-475	0.1637	0.1637	7,130	0.00			02-18-0-110-017	
8826304	DISCOUNT, INC. RETIREMENT PLAN TITLE REPORT NO. SC-5630.0, DOCUMENT NO. A02014623	0.1080	0.1080	4,705	0.00			02-18-0-110-018	
8826305	ST. CLAIR COUNTY AS TRUSTEE TITLE REPORT NO. SC-5631.0, DOCUMENT NO. A02121470	0.1375	0.1375	5,990	0.00			02-18-0-110-038	
8826307	THE COUNTY BOARD OF SCHOOL TRUSTEES OF ST. CLAIR COUNTY, FOR THE BENEFIT OF SCHOOL DISTRICT NO. 189 TITLE REPORT NO. SC-5437.0, BOOK 2451 PAGE 991	0.0654					TE 0.0239	TE 1,043	GRADING & SIDEWALK CONSTRUCTION
8826308	O.F.S., LTD. TITLE REPORT NO. SC-5632.0, BOOK 3030 PAGE 775	0.1621	0.0302	1,314	0.1319		TE 0.0163	TE 711	GRADING & SIDEWALK CONSTRUCTION
8826309	ADAM ABDELJABBAR, A MARRIED PERSON TITLE REPORT NO. SC-5434.0, DOCUMENT NO. A02073162	0.6887	0.0038	164	0.6849		TE 0.0115	TE 501	GRADING & SIDEWALK CONSTRUCTION

\* SEE TOTAL HOLDING AREA SOURCE TABLE ON SHEET 2

\*\* PARCEL PREVIOUSLY ACQUIRED

BASELINE COORDINATE TABLE ST. CLAIR AVE.

STATION	NORTH	EAST
PT 29+78.25	14,038,979.2504	2,458,051.8054
PI 36+38.49 (ST CLAIR AVENUE) =	14,039,450.6200	2,457,589.5000
PI 4+86.87 (15TH STREET)		
PI 40+68.86 (ST CLAIR AVENUE) =	14,039,450.6164	2,457,589.5036
PI 15+18.60 (PEDESTRIAN BRIDGE)		
PI 41+08.55 (BK) =	14,039,786.1280	2,457,260.2720
PI 41+09.18 (AH)		
POT 52+37.78	14,040,590.9000	2,456,469.0200

BASELINE COORDINATE TABLE PEDESTRIAN BRIDGE

STATION	NORTH	EAST
PI 9+63.46	14,039,621.9347	2,457,331.2636
PI 10+47.02	14,039,681.5739	2,457,272.7327
PI 12+21.93	14,039,559.0738	2,457,147.8959
PI 12+77.93	14,039,599.0441	2,457,108.6738
PI 14+64.97	14,039,730.0493	2,457,242.1779