

STATE OF ILLINOIS  
DEPARTMENT OF TRANSPORTATION  
DIVISION OF HIGHWAYS

**PROPOSED  
HIGHWAY PLANS**

FAP ROUTE 885 (IL 146)  
SECTION 11B-1  
PROJECT: ACBRF-0885(047)  
STRUCTURE REPLACEMENT OVER  
PETERS CREEK  
SN 035-0012 (EX.)  
SN 035-0016 (PR.)  
HARDIN COUNTY  
C-99-006-10

F.A.P. RTE.	SECTION	COUNTY	TOTAL SHEETS	SHEET NO.
885	11B-1	HARDIN	50	1
ILLINOIS CONTRACT NO. 78152				

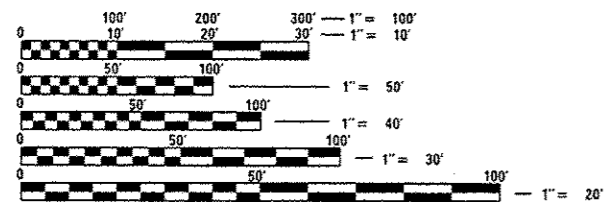
**INDEX OF SHEETS**

- 1 COVER SHEET
- 2 GENERAL NOTES, COMMITMENTS, STANDARDS AND SIGNATURES
- 3-8 SUMMARY OF QUANTITIES
- 9 TYPICAL ROADWAY SECTION
- 10-12 SCHEDULES
- 13 PLAN AND PROFILE
- 14 STAGE I CONSTRUCTION PLAN
- 15 STAGE II CONSTRUCTION PLAN
- 16 GUARDRAIL AND SHOULDER LAYOUT
- 17 EROSION CONTROL
- 18 WIDE LOAD DETOUR
- 19 TRAFFIC BARRIER TERMINAL, TYPE 6 (SPECIAL)
- 20 MISCELLANEOUS DETAILS
- 21-41 STRUCTURE PLANS
- 42-50 CROSS SECTIONS  
STANDARDS

**TRAFFIC DATA**

2009 ADT = 2190  
5.48 % TRUCKS  
POSTED SPEED = 55 MPH

CAVE IN ROCK TOWNSHIP HARDIN COUNTY ROAD DISTRICT #01

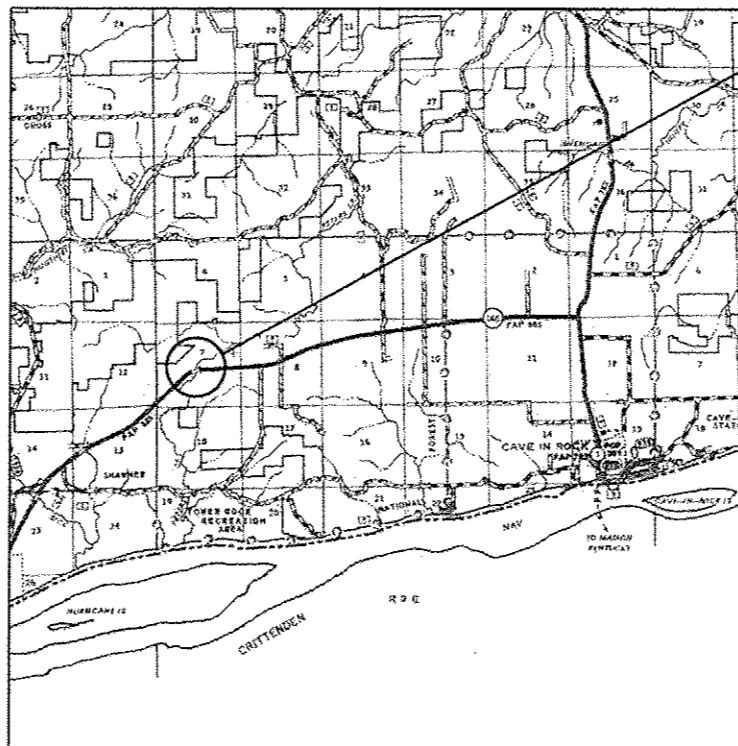


FULL SIZE PLANS HAVE BEEN PREPARED USING STANDARD ENGINEERING SCALES. REDUCED SIZED PLANS WILL NOT CONFORM TO STANDARD SCALES. IN MAKING MEASUREMENTS ON REDUCED PLANS, THE ABOVE SCALES MAY BE USED.

J.U.L.I.E.  
JOINT UTILITY LOCATION INFORMATION FOR EXCAVATION  
1-800-892-0123  
OR 811

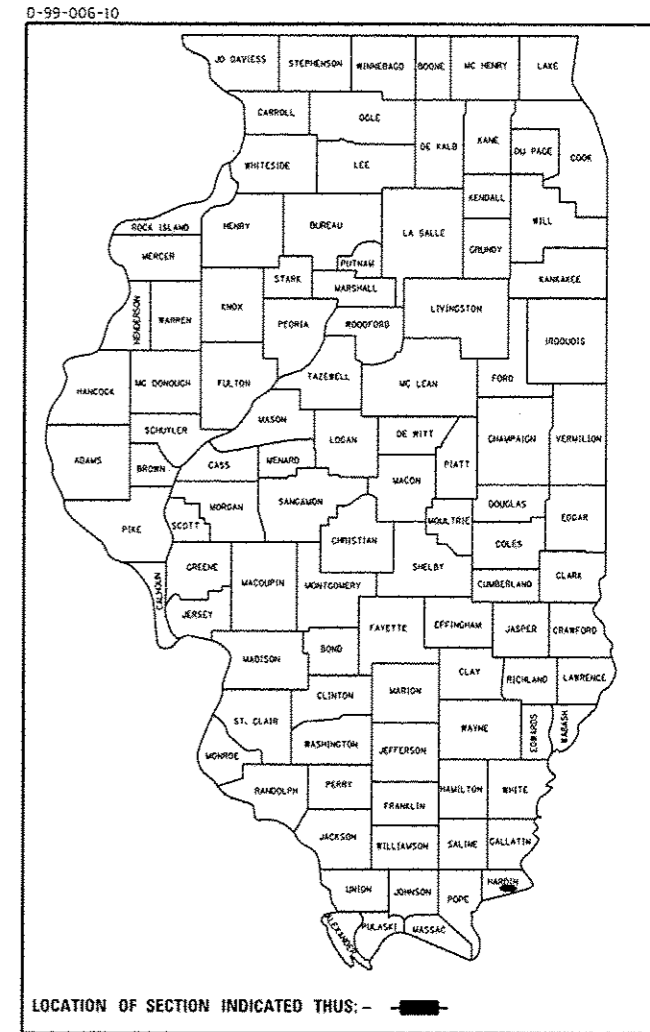
PROJECT MANAGER: DAVID PICHE (618) 351-5227  
PROJECT ENGINEER: BILL PORTER (618) 351-5224

CONTRACT NO. 78152



PROPOSED PROJECT LOCATION  
@ PROPOSED STR STA 228+28.00  
SN 035-0012 (EX.)  
SN 035-0016 (PR.)  
IL 146  
OVER PETERS CREEK

GROSS LENGTH = 195 FT. = 0.04 MILE  
NET LENGTH = 195 FT. = 0.04 MILE



STATE OF ILLINOIS  
DEPARTMENT OF TRANSPORTATION  
DIVISION OF HIGHWAYS

SUBMITTED Oct 16 2012  
Omey Amann  
DEPUTY DIRECTOR OF HIGHWAYS, REGION ENGINEER

Dec 7 2012  
John D. Baranzelli P.E.  
acting ENGINEER OF DESIGN AND ENVIRONMENT

Dec 7 2012  
William R. Frey  
acting DIRECTOR OF HIGHWAYS, CHIEF ENGINEER

**PRINTED BY THE AUTHORITY  
OF THE STATE OF ILLINOIS**

**GENERAL NOTES**

THE THICKNESS OF HOT-MIX ASPHALT MIXTURE SHOWN ON THE PLANS IS THE NOMINAL THICKNESS. DEVIATIONS FROM THE NOMINAL THICKNESS WILL BE PERMITTED WHEN SUCH DEVIATIONS OCCUR DUE TO IRREGULARITIES IN THE EXISTING SURFACE OR BASE ON WHICH THE HOT-MIX ASPHALT MIXTURE IS PLACED.

FACTORS USED FOR ESTIMATING PLAN QUANTITIES ARE AS FOLLOWS:

ALL HOT MIX ASPHALT	2.016 TONS/CU YD
BITUMINOUS MATERIALS ON PAVEMENT:	0.09 GAL /SQ YD
AGGREGATE (PRIME COAT)	0.0015 GAL /SQ YD
ALL AGGREGATE	2.05 TON /SQ YD
RIP RAP	1.50 TON /SQ YD

PLAN DIMENSIONS AND DETAILS RELATIVE TO THE EXISTING STRUCTURE HAVE BEEN TAKEN FROM EXISTING PLANS AND ARE SUBJECT TO NOMINAL CONSTRUCTION VARIATIONS. IT SHALL BE THE CONTRACTOR'S RESPONSIBILITY TO VERIFY SUCH DIMENSIONS AND DETAILS IN THE FIELD AND MAKE NECESSARY APPROVED ADJUSTMENTS PRIOR TO CONSTRUCTION OR ORDERING OF MATERIALS. SUCH VARIATIONS SHALL NOT BE CAUSE FOR ADDITIONAL COMPENSATION FOR A CHANGE IN THE SCOPE OF THE WORK. THE CONTRACTOR, HOWEVER, WILL BE PAID FOR THE ACTUAL QUANTITY FURNISHED AT THE UNIT PRICE BID FOR THE WORK. CONSTRUCTION PLANS ARE AVAILABLE FOR REVIEW AT THE DISTRICT 9 OFFICE.

IN ADDITION TO THE REQUIREMENTS OF ARTICLE 107.16 THE CONTRACTOR SHALL PROTECT THE SURFACE OF ALL BRIDGE DECK AND BRIDGE APPROACH PAVEMENTS IN A MANNER SATISFACTORY TO THE ENGINEER BEFORE ANY EQUIPMENT IS ALLOWED TO CROSS THE STRUCTURE. PROTECTION SHALL BE PROVIDED FOR ALL EQUIPMENT AS DEFINED IN ARTICLE 101.17 REGARDLESS IF TRACK MOUNTED OR WHEELED.

AT ALL LOCATIONS WHERE HOT MIX ASPHALT OR CONCRETE PAVEMENT JOINS AN EXISTING HOT MIX ASPHALT OR CONCRETE PAVEMENT, A SAWED JOINT SHALL BE CONSTRUCTED. THE COST OF THIS JOINT SHALL BE INCLUDED IN THE TYPE OF PAVEMENT BEING CONSTRUCTED.

REMOVAL OF THE EXISTING 10 1/2 " MINIMUM AND VARIABLE THICK BRIDGE APPROACH PAVEMENTS, RESURFACED CONCRETE PAVEMENT AND WIDENING ARE INCLUDED IN THE QUANTITY FOR "PAVEMENT REMOVAL - SQ YD".

TREES SHALL BE PRESERVED THROUGHOUT THIS SECTION AS SHOWN ON THE PLANS AND AS DIRECTED BY THE ENGINEER. GENERALLY, TREES OUTSIDE THE CONSTRUCTION LIMITS, AND WHICH DO NOT INTERFERE WITH CONSTRUCTION, SHALL NOT BE DISTURBED.

IT WILL BE THE CONTRACTOR'S RESPONSIBILITY TO REMOVE ANY DEBRIS OR DIRT CAUSED BY CONSTRUCTION ACTIVITY THAT COVERS THE NEW RIP RAP AND NO ADDITIONAL COMPENSATION WILL BE ALLOWED.

ALL TEMPORARY EROSION CONTROL MEASURES SHALL BE LEFT IN PLACE UNTIL REMOVAL IS REQUIRED TO CONSTRUCT FINAL GRADE LINES.

PRIOR TO PLACEMENT OF THE FINAL PAVEMENT MARKINGS THE RESIDENT ENGINEER SHOULD CONTACT THE BUREAU OF OPERATIONS AND ARRANGE FOR INSPECTION AND APPROVAL OF THE PAVEMENT MARKING LAYOUT.

COST OF REMOVING HOT MIX ASPHALT BASE COURSE WIDENING, 10" USED FOR STAGE I TRAFFIC IS INCLUDED IN THE QUANTITY FOR "PAVED SHOULDER REMOVAL - SQ YD".

THE ADVANCE DETECTOR LOOPS ARE TYPICALLY LOCATED 275 FEET IN ADVANCE OF THE STOP BAR. THE BUREAU OF OPERATIONS SHOULD APPROVE THE LOOP LOCATIONS PRIOR TO INSTALLATION.

THE CENTERLINE PAVEMENT MARKING SHOULD BE REMOVED FROM THE STOP BAR TO THE SAND ATTENUATORS OR DRUMS. EDGE LINE PAVEMENT MARKING SHOULD BE REMOVED IF A 10 FOOT LANE WIDTH CANNOT BE MAINTAINED. TEMPORARY EDGE LINES SHOULD BE INSTALLED WHEN THE EDGE LINES ARE REMOVED.

THE BARRIER WALL AND GUARDRAIL REFLECTORS AS SHOWN ON STANDARD 701321 SHALL BE INSTALLED PRIOR TO OPENING TO TRAFFIC.

ANY TIME THE CONCRETE BARRIER IS NOT IN THE PROPER POSITION, FLAGGERS SHALL BE IN PLACE TO CONTROL TRAFFIC. THE TEMPORARY TRAFFIC SIGNALS SHALL BE SET TO FLASH ALL RED.

TRIM EDGES OF EXISTING HOT MIX ASPHALT SURFACE FLUSH WITH EXISTING PAVEMENT PRIOR TO CONSTRUCTING NEW BASE COURSE WIDENING.

THE HOT MIX ASPHALT BASE COURSE WIDENING, 10" CONSTRUCTED IN PRE-STAGE 1 MAY BE INCORPORATED INTO THE FINAL HOT MIX ASPHALT SHOULDERS, 8" DURING STAGE II CONSTRUCTION IF APPROVED BY THE ENGINEER. SUCH CHANGE WILL NOT BE CAUSE FOR ADDITIONAL COMPENSATION, BUT THE CONTRACTOR WILL BE PAID FOR THE ACTUAL QUANTITY FURNISHED AT THE UNIT PRICE BID FOR THE WORK.

THE REMOVAL OF THE EXISTING CONCRETE SLOPE WALLS IS INCLUDED IN THE QUANTITY OF "REMOVAL OF EXISTING STRUCTURES - EACH".

THE PROPOSED BRIDGE APPROACH PAVEMENT CURB SHALL EXTEND OVER THE BRIDGE APPROACH PAVEMENT CONNECTOR FROM STA. 227+30 RT. TO STA. 227+36 RT. AND IS INCLUDED IN THE QUANTITY OF "TYPE E INLET BOX, STANDARD 610001 - EACH".

**COMMITMENTS:**

SEE THE CONTRACT SPECIAL PROVISIONS FOR ENVIRONMENTAL COMMITMENTS.

**STANDARDS**

000001-06	STANDARD SYMBOLS, ABBREVIATIONS AND PATTERNS
001001-02	AREAS OF REINFORCEMENT BARS
280001-07	TEMPORARY EROSION CONTROL SYSTEMS
420001-07	PAVEMENT JOINTS
420401-09	BRIDGE APPROACH PAVEMENT CONNECTOR
515001-03	NAME PLATE FOR BRIDGES
542401-01	METAL END SECTION FOR PIPE CULVERTS
610001-06	SHOULDER INLET WITH CURB
630001-10	STEEL PLATE BEAM GUARDRAIL
630201-06	PCC/BITUMINOUS STABILIZATION AT STEEL PLATE BEAM GUARDRAIL
630301-06	SHOULDER WIDENING FOR TYPE I (SPECIAL) GUARDRAIL TERMINALS
631031-11	TRAFFIC BARRIER TERMINAL, TYPE 6
635006-03	REFLECTOR AND TERMINAL MARKER PLACEMENT
635011-02	REFLECTOR MARKER AND MOUNTING DETAILS
701006-04	OFF-RD OPERATIONS, 2L, 2W, 15' TO 24" AWAY, FOR SPEEDS ≥ 45 MPH
701201-04	LANE CLOSURE, 2L, 2W, DAY ONLY, FOR SPEEDS ≥ 45 MPH
701301-04	LANE CLOSURE, 2L, 2W, SHORT TIME OPERATIONS, FOR SPEEDS ≥ 45 MPH
701321-13	LANE CLOSURE, 2L, 2W, BRIDGE REPAIR WITH BARRIER
701326-04	LANE CLOSURE, 2L, 2W, PAVEMENT WIDENING, FOR SPEEDS ≥ 45 MPH
701901-03	TRAFFIC CONTROL DEVICES
704001-07	TEMPORARY CONCRETE BARRIER
780001-03	TYPICAL PAVEMENT MARKINGS
781001-03	TYPICAL APPLICATIONS RAISED REFLECTIVE PAVEMENT MARKERS

**MIXTURE REQUIREMENTS**

LOCATIONS(S):	BASE COURSE WIDENING
MIXTURE USE(S):	HOT-MIX ASPHALT BINDER COURSE, N90, IL-19.0
TYPICAL AC/PG:	PG64-22
RAP % (MAX):	10
DESIGN AIR VOIDS:	4.0 %, 90 GYRATION DESIGN
MIXTURE COMPOSITION: (GRADATION MIXTURE)	IL-19.0 mm
FRICITION AGGREGATE:	NONE
LOCATIONS(S):	HOT-MIX ASPHALT SHOULDERS
MIXTURE USE(S):	HOT-MIX ASPHALT SHOULDERS
TYPICAL AC/PG:	PG58-22
RAP % (MAX):	50
DESIGN AIR VOIDS:	2.0 %, 30 GYRATION DESIGN
MIXTURE COMPOSITION: (GRADATION MIXTURE)	HMA SHOULDERS
FRICITION AGGREGATE:	NONE

Prepared By: *Joe Zamboniewicz*  
DISTRICT STUDIES & PLANS ENGINEER

Examined By: *Joe Zamboniewicz*  
DISTRICT LAND ACQUISITION ENGINEER

Examined By: *Conrad Kelly*  
DISTRICT PROGRAM DEVELOPMENT ENGINEER

Examined By: *Keith Kelly*  
DISTRICT OPERATIONS ENGINEER

Examined By: *Douglas McElroy*  
DISTRICT CONSTRUCTION ENGINEER

Examined By: *Bruce Panko*  
DISTRICT MATERIALS ENGINEER

Approved By: *James O'Connor*  
DEPUTY DIRECTOR OF HIGHWAYS, REGION 5 ENGINEER

Oct 15 2012  
DATE

STATE OF ILLINOIS  
DEPARTMENT OF TRANSPORTATION

SIGNATURES, INDEX OF SHEETS, GENERAL NOTES, AND STANDARDS

F.A.P. RTE.	SECTION	COUNTY	TOTAL SHEETS	SHEET NO.
885	11B-1	HARDIN	50	2
CONTRACT NO. 78152				

SCALE: \_\_\_\_\_ SHEET NO. \_\_\_\_ OF \_\_\_\_ SHEETS STA. \_\_\_\_\_ TO STA. \_\_\_\_\_

ILLINOIS FED. AID PROJECT









CODE NUMBER	PAY ITEM	CONSTRUCTION TYPE CODE 0011	
		UNIT	035-0016 FUNDING 80% FEDERAL, 20% STATE
70106800	CHANGEABLE MESSAGE SIGN	CAL MO	1
70300220	TEMPORARY PAVEMENT MARKING-LINE 4"	FOOT	1877
70301000	WORK ZONE PAVEMENT MARKING REMOVAL	SQ FT	626
70400100	TEMPORARY CONCRETE BARRIER	FOOT	287.5
70400200	RELOCATE TEMPORARY CONCRETE BARRIER	FOOT	275
70600250	IMPACT ATTENUATORS, TEMPORARY (NON-REDIRECTIVE), TEST LEVEL 3	EACH	2
* 70600260	IMPACT ATTENUATORS, TEMPORARY (FULLY REDIRECTIVE, NARROW), TEST LEVEL 3	EACH	1
* 70600332	IMPACT ATTENUATORS, RELOCATE (FULLY REDIRECTIVE, NARROW), TEST LEVEL 3	EACH	1
70600350	IMPACT ATTENUATORS, RELOCATE (NON-REDIRECTIVE), TEST LEVEL 3	EACH	2
* 78001110	PAINT PAVEMENT MARKING-LINE 4"	FOOT	2836
* 78100100	RAISED REFLECTIVE PAVEMENT MARKER	EACH	3
* 78100105	RAISED REFLECTIVE PAVEMENT MARKER (BRIDGE)	EACH	2
* 78200410	GUARDRAIL MARKERS, TYPE A	EACH	5
* 78200520	BARRIER WALL MARKERS, TYPE B	EACH	4

\* SPECIALTY  
ITEM

FILE NAME : c:\pwworkspace\11111111\11111111\11111111.dgn

USER NAME : USER*	DESIGNED -	REVISED -
PLOT SCALE : 100.0000 / 1"	DRAWN -	REVISED -
PLOT DATE : 10/17/2012	CHECKED -	REVISED -
	DATE -	REVISED -

STATE OF ILLINOIS  
DEPARTMENT OF TRANSPORTATION

SUMMARY OF QUANTITIES

SCALE: SHEET NO. OF SHEETS STA. TO STA.

F.A.P. RTE. 885	SECTION 11B-1	COUNTY HARDIN	TOTAL SHEETS 50	SHEET NO. 7
ILLINOIS FED. AID PROJECT				CONTRACT NO. 78152









### SEEDING SCHEDULE

LOCATION STATION	SEEDING CLASS 2	NITROGEN	PHOSPHOROUS	POTASSIUM	AGRICULTURAL GROUND LIMESTONE	MULCH, METHOD 2	TEMPORARY EROSION CONTROL SEEDING
IL 146 (FAP 885)	ACRE	LBS	LBS	LBS	TON	ACRE	POUND
<b>NW QUAD</b>							
STA. 227+07.00 TO STA. 227+81.50	0.05	4.5	4.5	4.5	0.1	0.05	10
<b>NE QUAD</b>							
STA. 229+02.50 TO STA. 231+59.00	0.15	13.5	13.5	13.5	0.3	0.15	30
<b>SW QUAD</b>							
STA. 225+02.00 TO STA. 227+52.00	0.1	9	9	9	0.2	0.1	20
<b>SE QUAD</b>							
STA. 228+74.00 TO STA. 230+53.00	0.1	9	9	9	0.2	0.1	20
<b>TOTALS</b>	<b>0.4</b>	<b>36</b>	<b>36</b>	<b>36</b>	<b>0.8</b>	<b>0.4</b>	<b>80</b>

### GUARDRAIL SCHEDULE

LOCATION STATION	TRAFFIC BARRIER TERMINAL				SPBGR TYPE A (6 FOOT POSTS)	TERMINAL MARKER DIRECT APPLIED	GUARDRAIL MARKER TYPE A	BARRIER WALL MARKER TYPE B
	TYPE 1 SPECIAL TANGENT	TYPE 1 SPECIAL FLARED	TYPE 6	TYPE 6 SPECIAL				
IL 146 (FAP 885)	EACH	EACH	EACH	EACH	FOOT	EACH	EACH	EACH
<b>NW QUAD</b>								
STA. 227+19.33 TO STA. 227+87.28		1		1		1		
<b>NE QUAD</b>								
STA. 228+89.07 TO STA. 231+33.01	1		1		150	1	2	
<b>SW QUAD</b>								
STA. 225+24.76 TO STA. 227+66.90	1		1		150	1	2	
<b>SE QUAD</b>								
STA. 228+68.69 TO STA. 229+99.34	1		1		37.5	1	1	
<b>NORTH</b>								
<b>SOUTH</b>								
<b>TOTALS</b>	<b>3</b>	<b>1</b>	<b>3</b>	<b>1</b>	<b>337.5</b>	<b>4</b>	<b>5</b>	<b>4</b>

FILE NAME = c:\pwworkspace\kell\proj\80242339\78152-aha-cvr-1.scd\_index.dgn

USER NAME = *USER*	DESIGNED -	REVISED -
	DRAWN -	REVISED -
PLOT SCALE = 100.0000' / 1" =	CHECKED -	REVISED -
PLOT DATE = 10/17/2012	DATE -	REVISED -

**STATE OF ILLINOIS  
DEPARTMENT OF TRANSPORTATION**

<b>SCHEDULE</b>			
SCALE:	SHEET NO.	OF SHEETS	STA. TO STA.

F.A.P. RTE.	SECTION	COUNTY	TOTAL SHEETS	SHEET NO.
885	11B-1	HARDIN	50	11
CONTRACT NO. 78152				
ILLINOIS FED. AID PROJECT				

PAVEMENT MARKING SCHEDULE

LOCATION STATION	TEMPORARY PAVEMENT MARKING LINE 4"	PAINT PAVEMENT MARKING LINE 4"	WORK ZONE PAVEMENT MARKING REMOVAL	PAVEMENT MARKING REMOVAL
IL 146 (FAP 885)	FOOT	FOOT	SQ FT	SQ FT
STA. 224+41.00 TO STA. 232+75.00				
WHITE ( 2 LINES)		1668		556
YELLOW SOLID		834		278
YELLOW SKIP		334		111
STAGE 1				
STA. 224+48.50 TO STA. 232+35.00	827		383	
STA. 226+43.00 TO STA. 227+75.00	134			
STA. 228+95.00 TO STA. 230+32.00	161			
STA. 230+20.00 TO STA. 230+48.00	28			
STAGE 2				
STA. 225+15.00 TO STA. 231+69.00	690		243	
STA. 226+53.00 TO STA. 226+90.00	37			
TOTAL	1877	2836	626	945

EROSION CONTROL SCHEDULE

LOCATION STATION	PERIMETER EROSION BARRIER	TEMPORARY EROSION CONTROL BLANKET
IL 146 (FAP 885)	FOOT	SQ YD
NW QUAD		
STA. 227+07.00 TO STA. 227+81.50	81	
STA. 227+50.00 TO STA. 227+81.00		58
NE QUAD		
STA. 229+02.50 TO STA. 231+59.00	266	
STA. 229+02.50 TO STA. 231+00.00		620
SW QUAD		
STA. 225+02.00 TO STA. 227+52.00	252	
SE QUAD		
STA. 228+74.00 TO STA. 230+53.00	170	
STA. 229+25.00 TO STA. 229+76.00		163
TOTALS	769	841

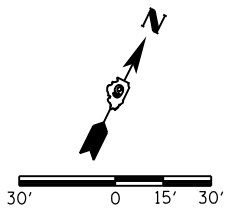
FILE NAME = c:\pwworkspace\kell\proj\78152-11b-1\78152-11b-1.dwg

USER NAME = *USER*	DESIGNED -	REVISED -
	DRAWN -	REVISED -
PLOT SCALE = 100.0000' / 1"	CHECKED -	REVISED -
PLOT DATE = 10/17/2012	DATE -	REVISED -

STATE OF ILLINOIS  
DEPARTMENT OF TRANSPORTATION

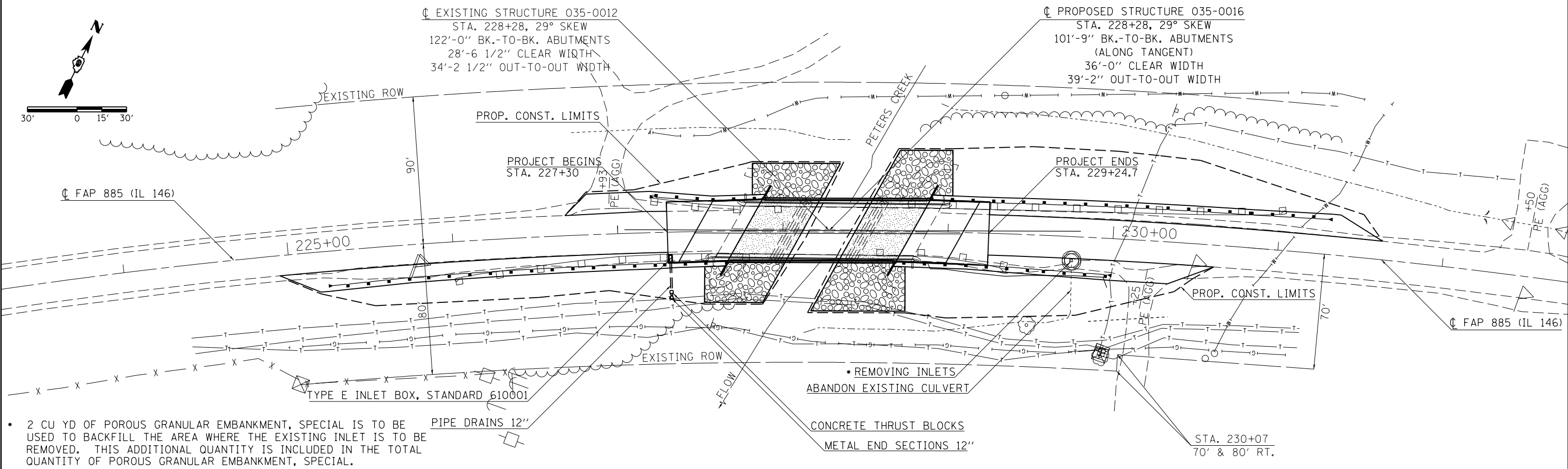
SCHEDULE			
SCALE:	SHEET NO.	OF SHEETS	STA. TO STA.

F.A.P. RTE.	SECTION	COUNTY	TOTAL SHEETS	SHEET NO.
885	11B-1	HARDIN	50	12
CONTRACT NO. 78152				ILLINOIS FED. AID PROJECT

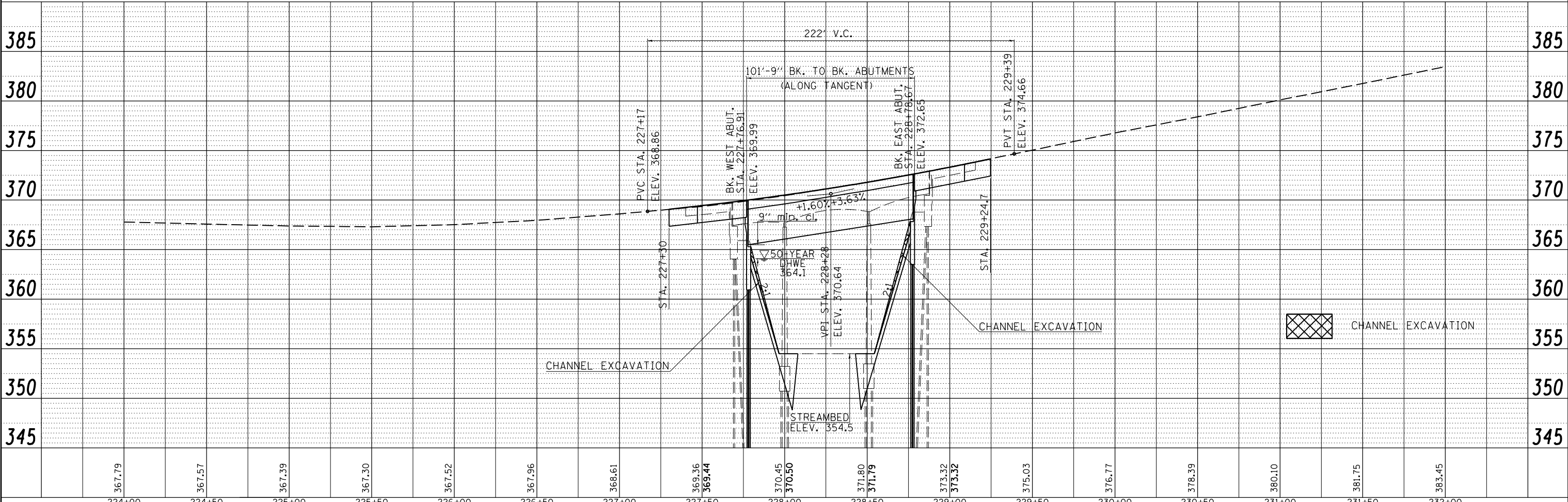


PLAN	SURVEYED	DATE
	PLOTTED	BY
	GRADES CHECKED	
	STRUCTURE NOTATIONS CHECKED	
	NOTE BOOK NO.	
	FILE NAME	

PROFILE	SURVEYED	DATE
	PLOTTED	BY
	GRADES CHECKED	
	STRUCTURE NOTATIONS CHECKED	
	NOTE BOOK NO.	
	FILE NAME	

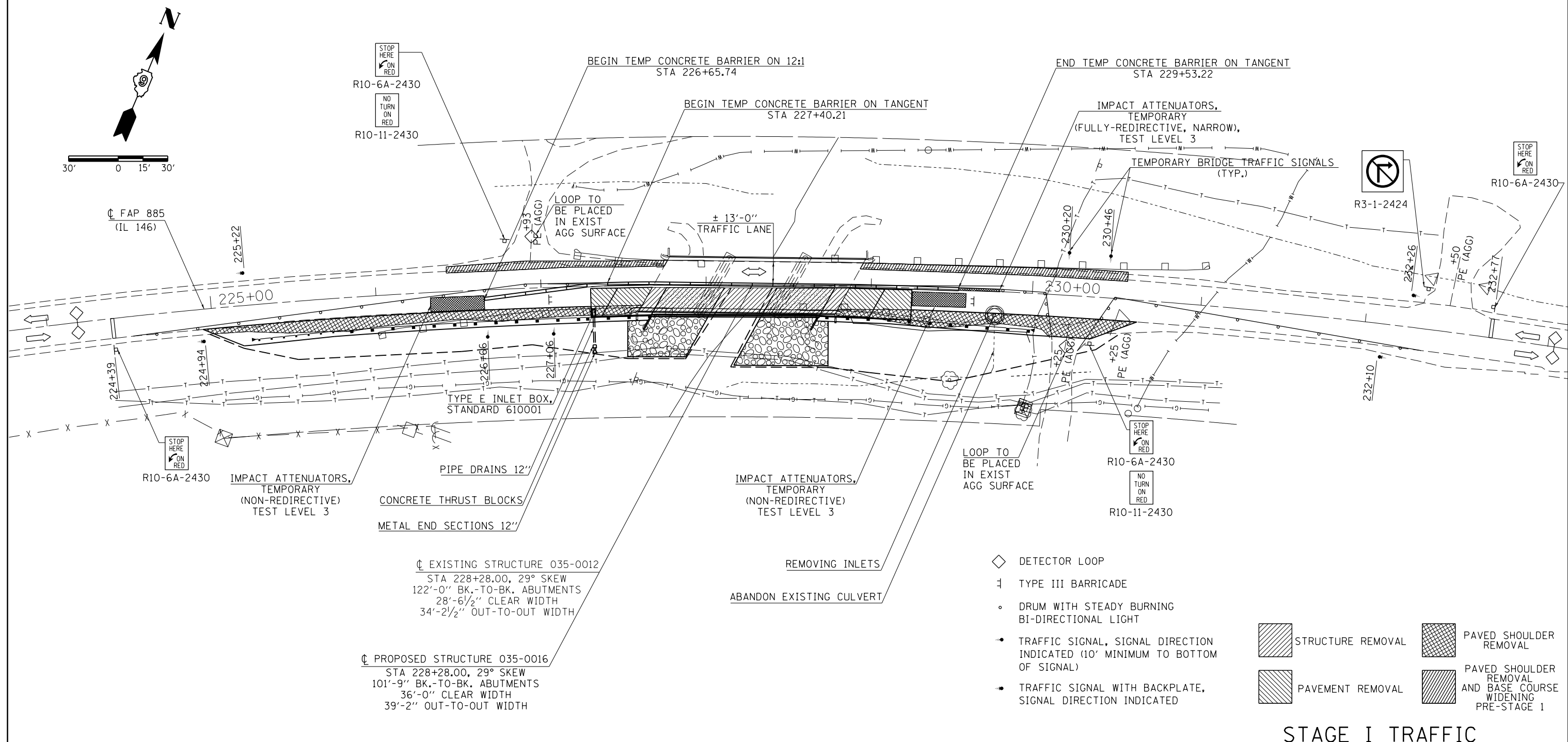


\* 2 CU YD OF POROUS GRANULAR EMBANKMENT, SPECIAL IS TO BE USED TO BACKFILL THE AREA WHERE THE EXISTING INLET IS TO BE REMOVED. THIS ADDITIONAL QUANTITY IS INCLUDED IN THE TOTAL QUANTITY OF POROUS GRANULAR EMBANKMENT, SPECIAL.



FILE NAME =	USER NAME = \$USER\$	DESIGNED -	REVISED -	<b>STATE OF ILLINOIS DEPARTMENT OF TRANSPORTATION</b>	<b>PLAN AND PROFILE</b>				F.A.P. RTE. 885	SECTION 11B-1	COUNTY HARDIN	TOTAL SHEETS 50	SHEET NO. 13
c:\pwork\pwork\kellykd\0242339\78152	shhc-plnpr.f.dgn	DRAWN -	REVISED -		SCALE:	SHEET NO.	OF SHEETS	STA.	TO STA.	CONTRACT NO. 78152			
	PLOT SCALE = 60.0000' / in.	CHECKED -	REVISED -										
	PLOT DATE = 10/17/2012	DATE -	REVISED -										

- NOTES:**
- TRAFFIC CONTROL SHALL BE ERECTED AS SHOWN AND ACCORDING TO "TRAFFIC CONTROL AND PROTECTION, STANDARD 701321".
  - SEE SPECIAL PROVISIONS FOR ADDITIONAL TRAFFIC CONTROL REQUIREMENTS.
  - COORDINATE LOCATION OF SIGNALS WITH FINAL WORK AS DIRECTED BY THE ENGINEER.
  - ADDITIONAL SIGNAGE FOR ENTRANCES AND ADVANCE WIDTH RESTRICTION WARNING SHALL BE INCLUDED IN THE COST OF 701321.
  - THE DIMENSION SHOWN ON THE WIDTH RESTRICTION SIGN (W12-I102(O)-48) SHOWN ON STANDARD 701321 AND ON THE ADVANCE WARNING SIGN (W12-I103) SHOWN ON SHEET NO. 17 SHALL BE 11'-6" FOR STAGE I CONSTRUCTION.
  - SEE STANDARD 701321 FOR COMPLETION OF STAGE CONSTRUCTION SIGNING AND ADVANCE DETECTOR LOOP PLACEMENT NOT SHOWN.
  - ALL TRAFFIC SIGNALS SHOWN ARE INCLUDED IN TEMPORARY BRIDGE TRAFFIC SIGNALS - 1 EACH.
  - THE ADDITIONAL DETECTOR LOOPS AT THE ENTRANCES ARE INCLUDED IN TEMPORARY BRIDGE TRAFFIC SIGNALS - 1 EACH.
  - TEMPORARY BRIDGE TRAFFIC SIGNALS SHALL BE A 4-PHASE SIGNAL WITH ACTUATION PROVIDED FOR THE PRIVATE ENTRANCE AT STATION 226+93 LT AND THE PRIVATE ENTRANCE AT STATION 230+25 RT.
  - ANY EXISTING CONCRETE GUTTER LOCATED WITHIN THE LIMITS OF THE PAVED SHOULDER REMOVAL SHALL BE REMOVED AND IS INCLUDED IN THE COST OF PAVED SHOULDER REMOVAL - SQ YD.

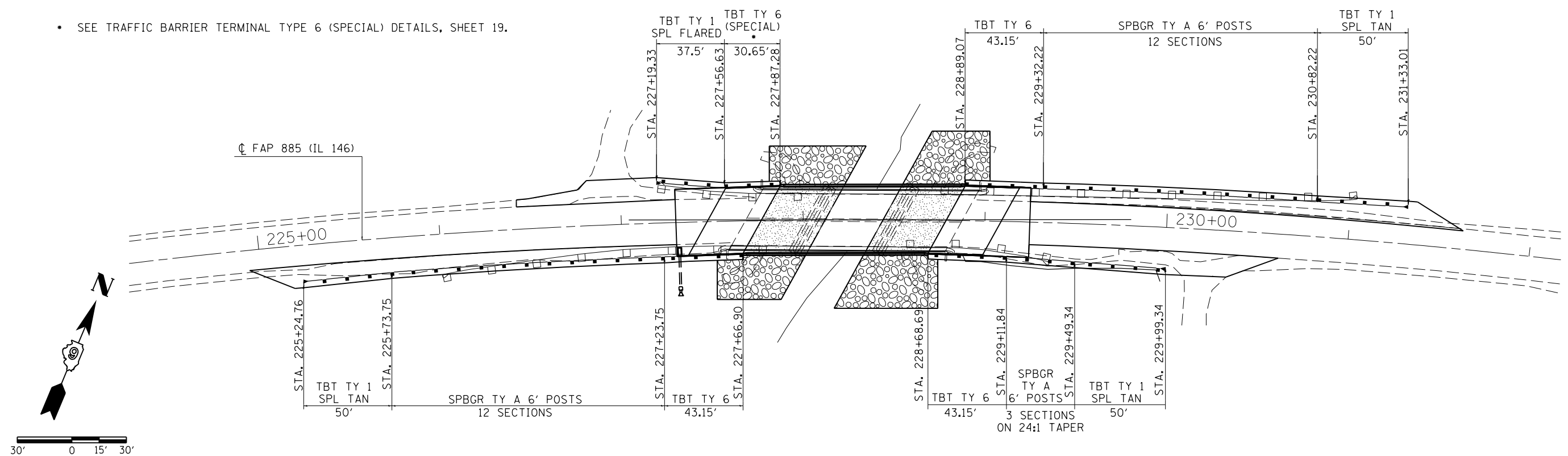


**STAGE I TRAFFIC**

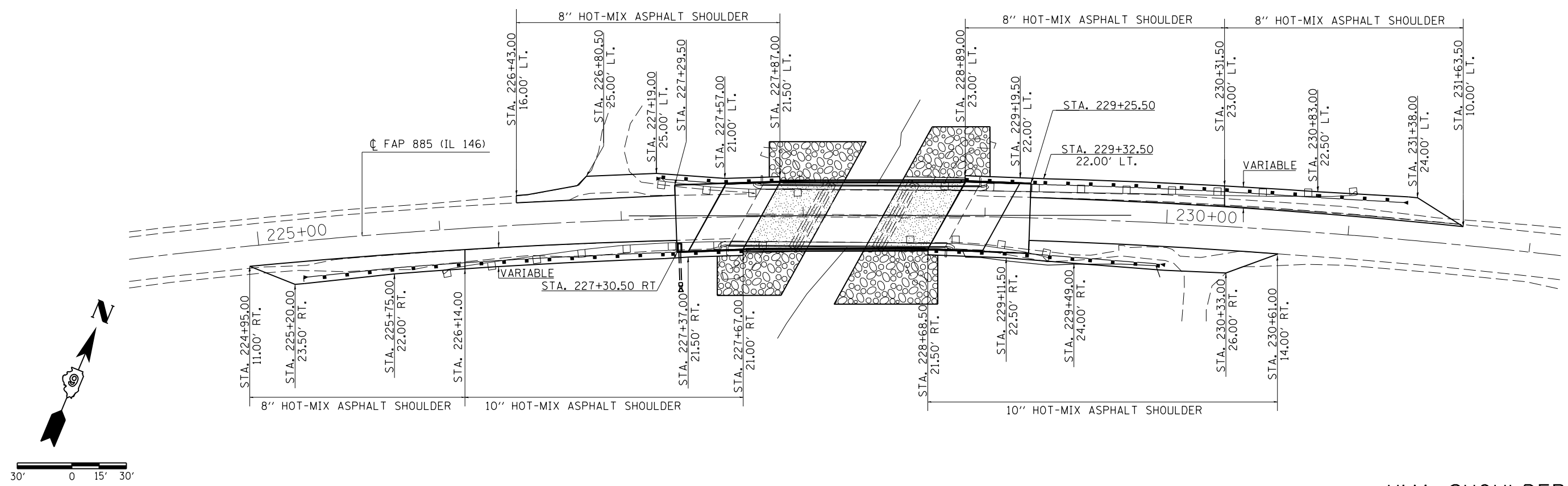
FILE NAME =	USER NAME = \$USER\$	DESIGNED -	REVISED -	<b>STATE OF ILLINOIS DEPARTMENT OF TRANSPORTATION</b>	<b>STAGE I CONSTRUCTION PLAN</b>			F.A. RTE.	SECTION	COUNTY	TOTAL SHEETS	SHEET NO.
et:\pw\work\p\midot\kellaykd\0242339\78152.msc.dgn		DRAWN -	REVISED -		885	11B-1	HARDIN	50	14			
\$MODELNAME\$	PLOT SCALE = 60.0000' / in.	CHECKED -	REVISED -		CONTRACT NO. 78152							
	PLOT DATE = 10/17/2012	DATE -	REVISED -		SCALE:	SHEET	OF	SHEETS	STA.	TO	STA.	ILLINOIS FED. AID PROJECT



• SEE TRAFFIC BARRIER TERMINAL TYPE 6 (SPECIAL) DETAILS, SHEET 19.



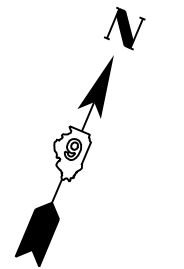
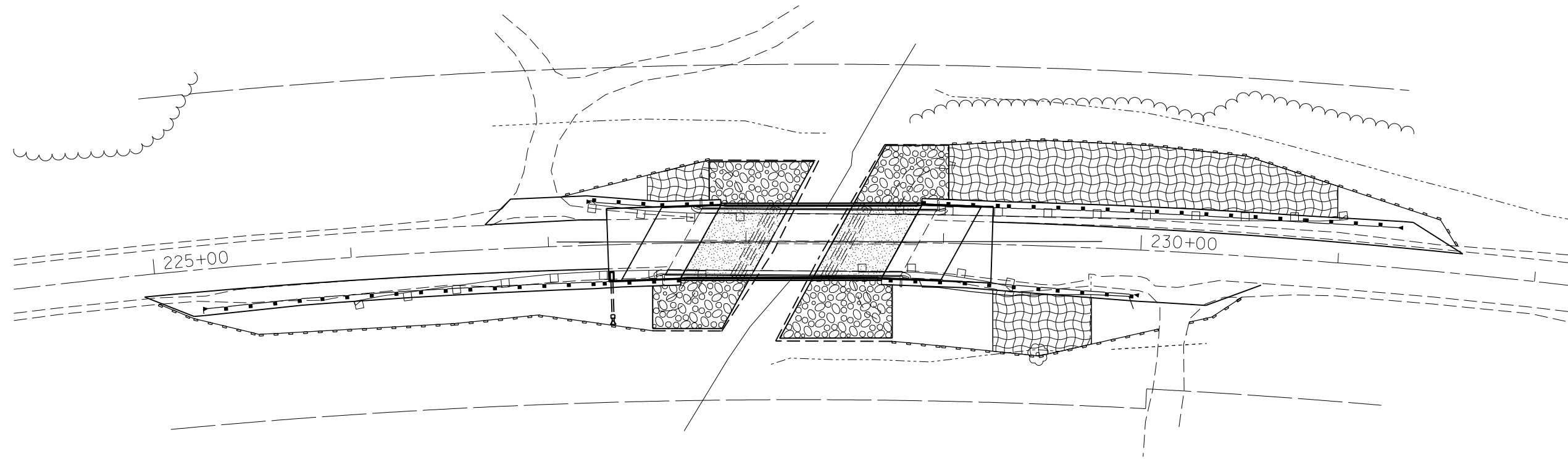
TERMINAL & GUARDRAIL LAYOUT



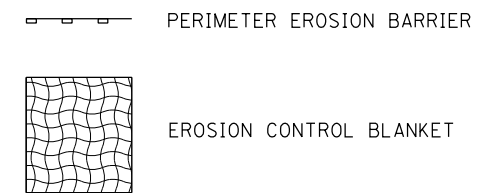
HMA SHOULDER LAYOUT

FILE NAME =	USER NAME = \$USER\$	DESIGNED BILL PORTER	REVISED -	<b>STATE OF ILLINOIS DEPARTMENT OF TRANSPORTATION</b>	<b>TERMINAL &amp; GUARDRAIL/HMA SHOULDER LAYOUT</b>	F.A.P. RTE.	SECTION	COUNTY	TOTAL SHEETS	SHEET NO.
et:\pw\work\p\midot\kellaykd\0242339\78152.msc.dgn	DRAWN LUKE MURPHY	REVISED -	885			11B-1	HARDIN	50	16	
PLOT SCALE = 60.0000' / in.	CHECKED	REVISED -	CONTRACT NO. 78152							
PLOT DATE = 10/17/2012	DATE	REVISED -	ILLINOIS FED. AID PROJECT							
				SCALE:	SHEET OF SHEETS	STA.	TO STA.			





30' 0 15' 30'



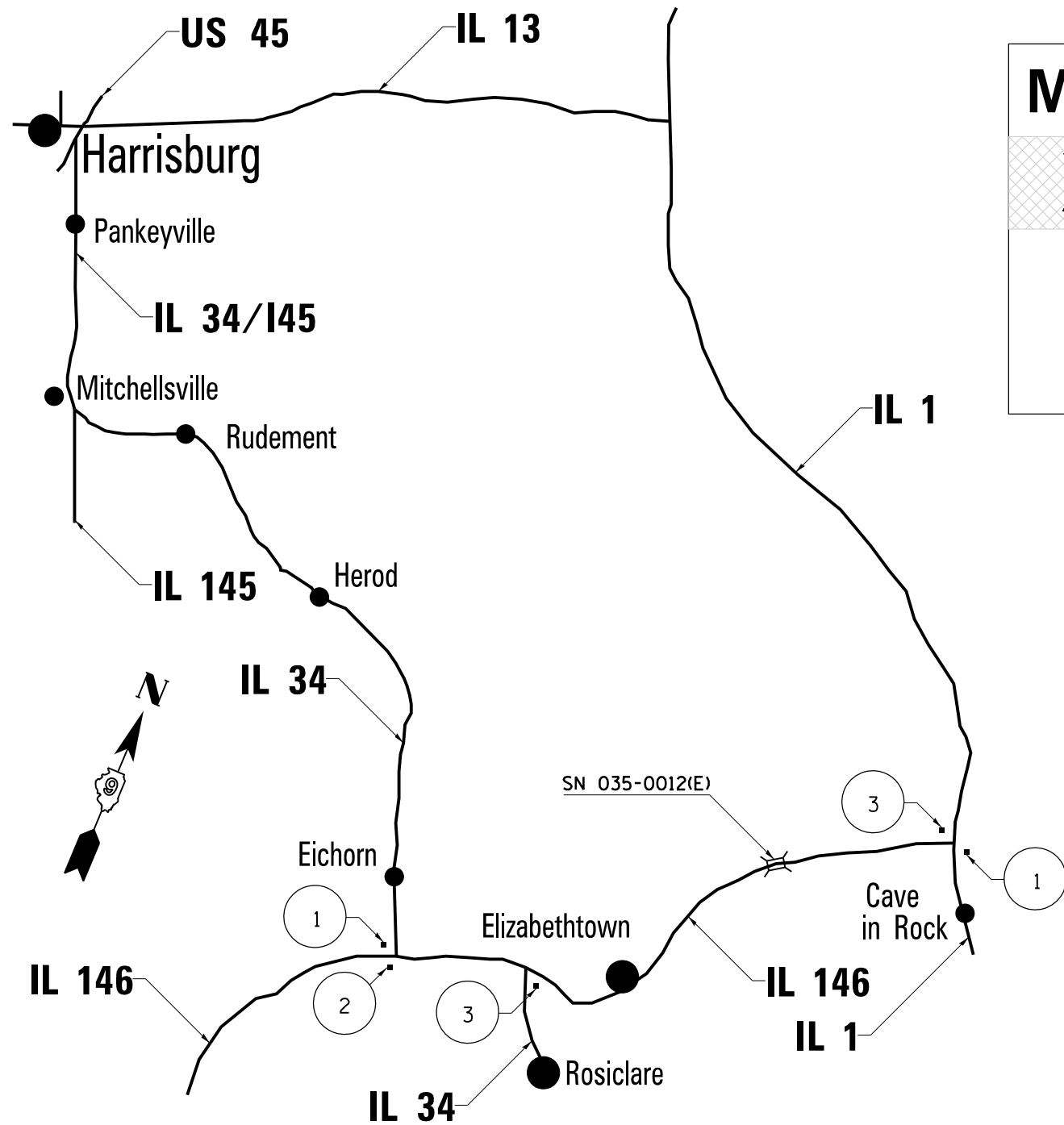
FILE NAME =	USER NAME = \$USER*	DESIGNED - LUKE MURPHY	REVISED -
et:\pw\work\p1dot\kellykd\0242339\78152\misc.dgn		DRAWN - LUKE MURPHY	REVISED -
	PLOT SCALE = 60.0000' / in.	CHECKED -	REVISED -
	PLOT DATE = 10/17/2012	DATE -	REVISED -

**STATE OF ILLINOIS  
DEPARTMENT OF TRANSPORTATION**

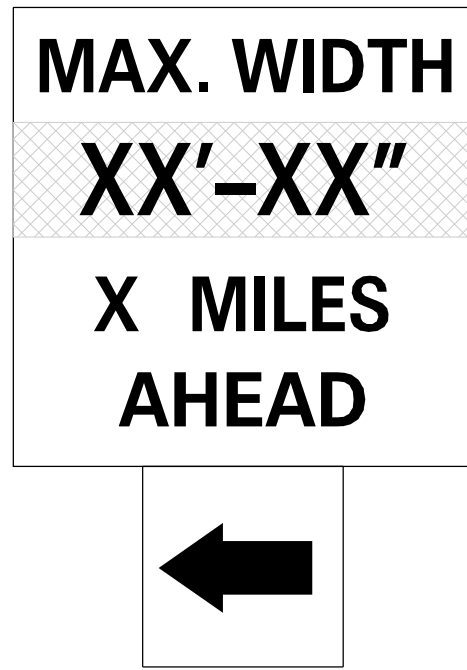
**EROSION CONTROL**

SCALE: SHEET OF SHEETS STA. TO STA.

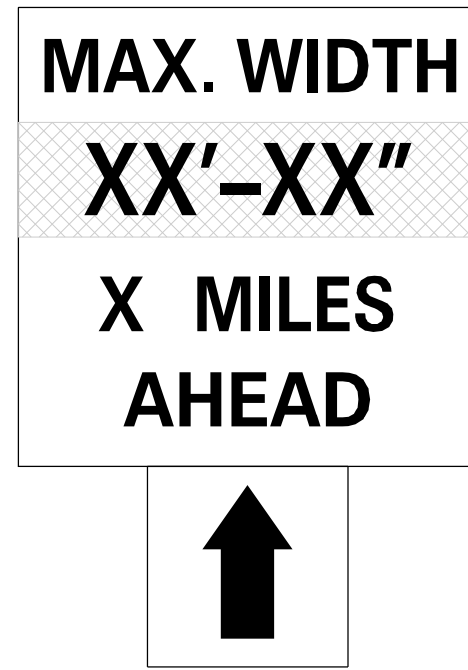
F.A. RTE.	SECTION	COUNTY	TOTAL SHEETS	SHEET NO.
885	11B-1	HARDIN	50	17
<b>CONTRACT NO. 78152</b>				
<small>ILLINOIS FED. AID PROJECT</small>				



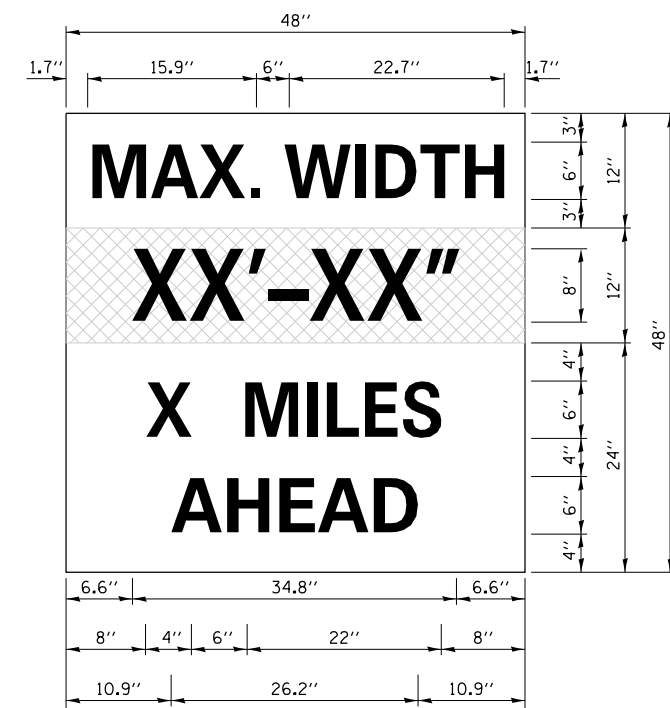
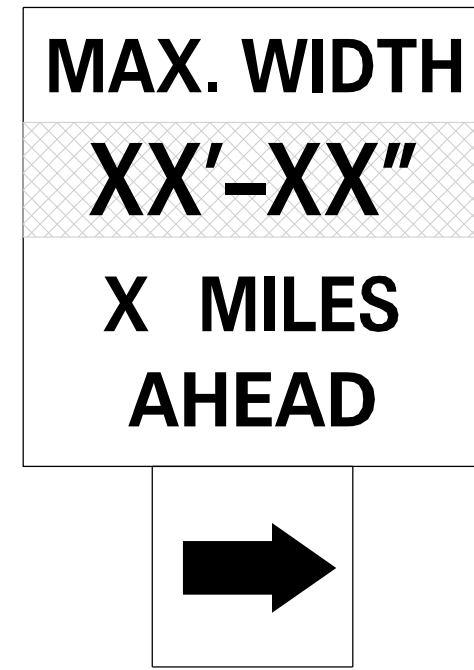
1 2 REQUIRED



2 1 REQUIRED



3 2 REQUIRED

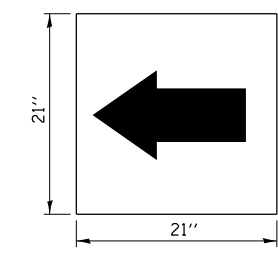


W12-I103

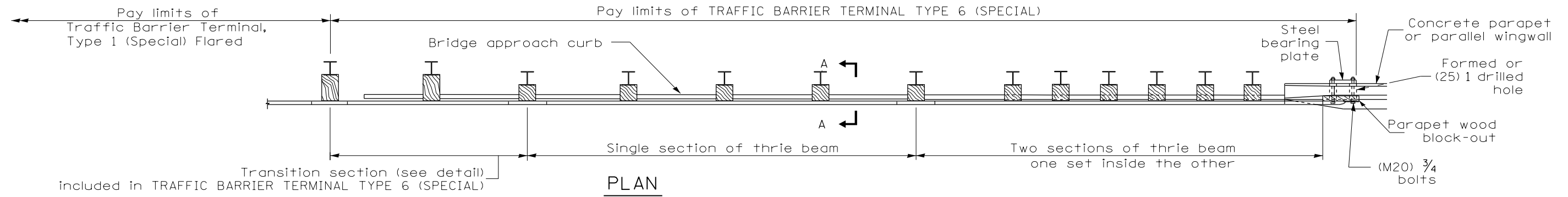
W12-I103 (WIDTH IS 80)  
 NO BORDER, BLACK ON WHITE:  
 "MAX WIDTH" D:  
 NO BORDER, BLACK ON ORANGE:  
 "XX'-XX'" D:  
 NO BORDER, BLACK ON WHITE:  
 "X MILES" D: "AHEAD" D:

NOTES:

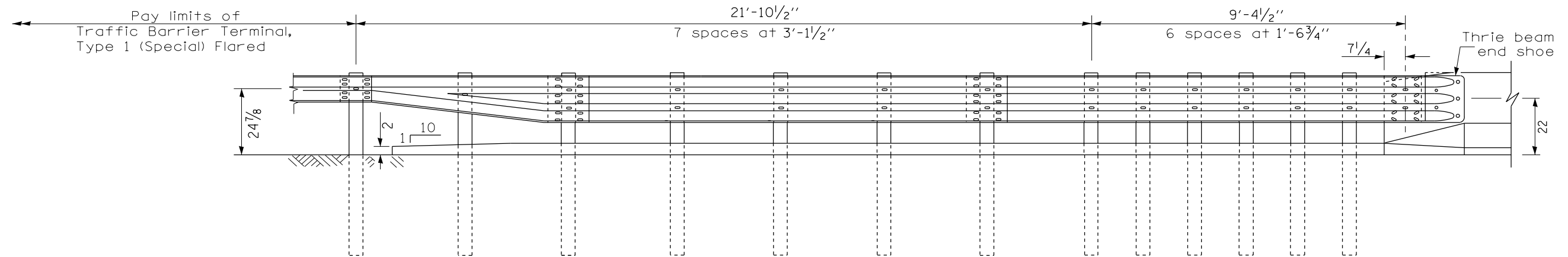
1. THE CONTRACTOR SHALL FURNISH THE POSTS AND ERECT THE SIGNS AT THE LOCATION DIRECTED BY THE ENGINEER. ALL SIGNS SHALL BE POST MOUNTED.
2. THE ABOVE NOTED WORK, INCLUDING SIGN, POSTS, HARDWARE AND LABOR SHALL BE INCLUDED IN THE CONTRACT UNIT PRICE, EACH, FOR TRAFFIC CONTROL AND PROTECTION, STD. 701321 AND NO OTHER COMPENSATION WILL BE ALLOWED.
3. THE WIDTH SHOWN ON THE W12-1103 SIGN SHALL BE 11'-6" FOR STAGE I, AND 10'-3" FOR STAGE II, OR AS DIRECTED BY THE ENGINEER. THE "X" AHEAD WILL BE DETERMINED BY THE ENGINEER.



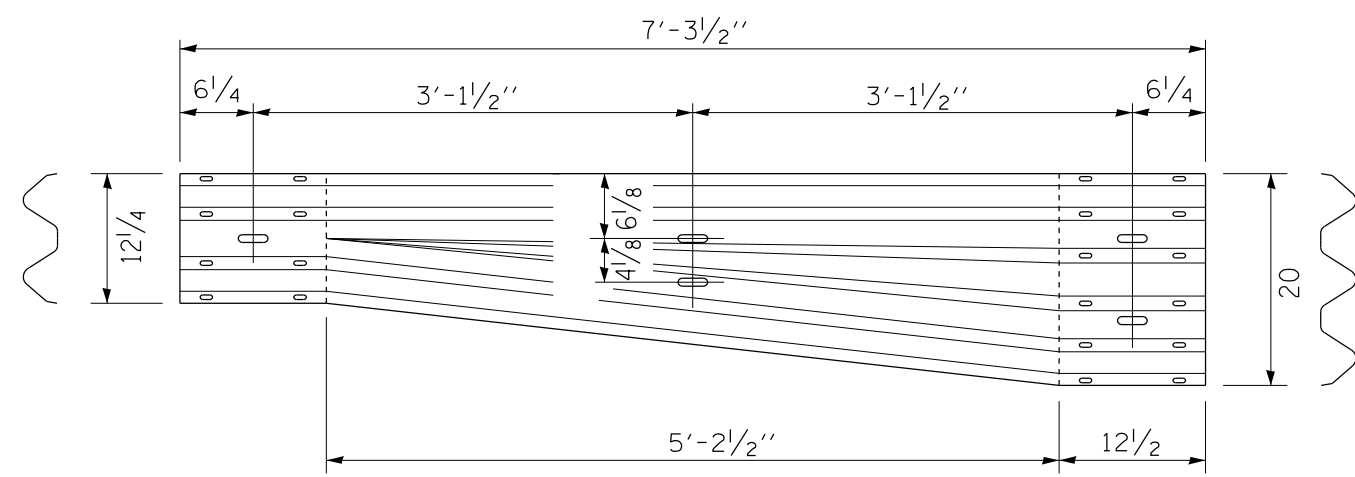
FILE NAME =	USER NAME = \$USER\$	DESIGNED - LUKE MURPHY	REVISED -	<b>STATE OF ILLINOIS DEPARTMENT OF TRANSPORTATION</b>	<b>WIDE LOAD SIGNING IL 146</b>				F.A.P. RTE.	SECTION	COUNTY	TOTAL SHEETS	SHEET NO.			
et:\pw\work\p\dot\k\ell\eykd\0242339\78152\masc.dgn		DRAWN - LUKE MURPHY	REVISED -		SCALE:	SHEET	OF	SHEETS	STA.	TO	STA.	885	11B-1	HARDIN	50	18
	PLOT SCALE = 60.0000' / in.	CHECKED -	REVISED -		CONTRACT NO. 78152											
	PLOT DATE = 10/17/2012	DATE -	REVISED -		ILLINOIS FED. AID PROJECT											



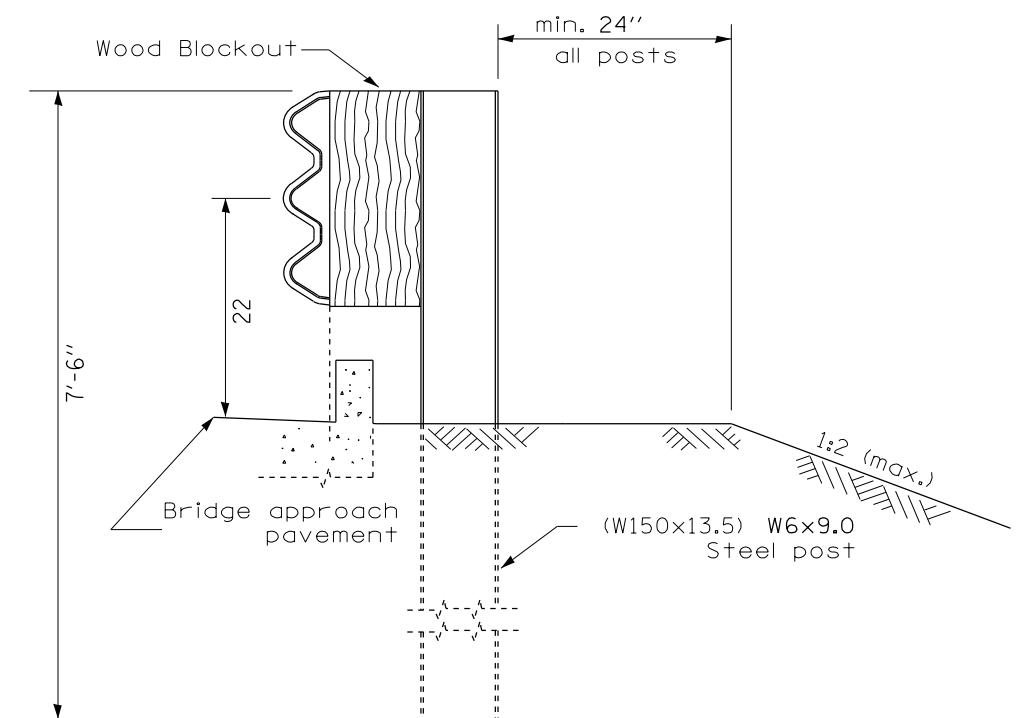
**PLAN**



**ELEVATION**



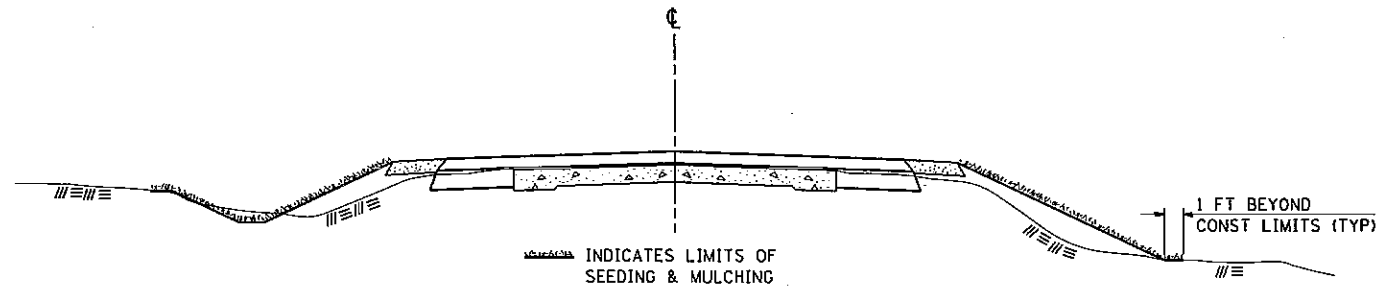
**TRANSITION SECTION**  
(10 gauge rail element)



**SECTION A-A**

FILE NAME = c:\pwork\pwork\kellykd\0242339\78152.msc.dgn	USER NAME = \$USER\$	DESIGNED - LUKE MURPHY	REVISED -	<b>STATE OF ILLINOIS DEPARTMENT OF TRANSPORTATION</b>	<b>DETAILS TRAFFIC BARRIER TERMINAL TYPE 6 (SPECIAL)</b>		F.A.P. RTE. 885	SECTION 11B-1	COUNTY HARDIN	TOTAL SHEETS 50	SHEET NO. 19	
	PLOT SCALE = 60.0000' / in.	CHECKED -	REVISED -		SCALE:	SHEET OF SHEETS	STA. TO STA.	CONTRACT NO. 78152				
PLOT DATE = 10/17/2012	DATE -	REVISED -	REVISED -		ILLINOIS FED. AID PROJECT							

**SEEDING & MULCHING**



**GENERAL NOTES**

IN GENERAL, ALL EARTH SURFACES DISTURBED DURING CONSTRUCTION OPERATIONS SHALL BE SEEDED AND MULCHED UPON COMPLETION OF ALL GRADING OPERATIONS.

FERTILIZER NUTRIENTS AND LIMESTONE SHALL BE APPLIED TO ALL SEEDED AREAS.

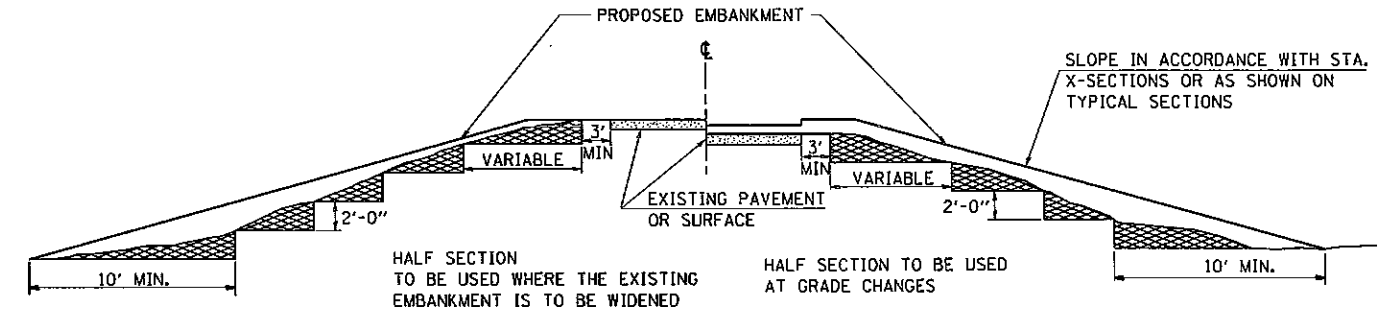
THE RATES OF APPLICATION OF FERTILIZER, MULCH AND LIMESTONE SHALL BE AS SPECIFIED IN THE SPECIAL PROVISIONS.


SECTIONS 250 AND 251 OF THE STANDARD SPECIFICATIONS SHALL GOVERN THIS WORK EXCEPT AS SPECIFIED HEREIN OR AS NOTED IN THE SPECIAL PROVISIONS.

REVISIONS	
REDRAWN	2-15-89
REVISED	8-15-94
REVISED	6-3-99
REVISED	1-27-08

STD. 9-12

**TYPICAL CROSS SECTION SHOWING STEP CONSTRUCTION ON EXISTING FILL**



 MATERIAL TO BE REMOVED AND REPLACED IN THE EMBANKMENT IN ACCORDANCE WITH ART. 205.04 OF THE STANDARD SPECIFICATION. COST TO BE INCLUDED IN THE VARIOUS ITEMS OF EXCAVATION AND NO ADDITIONAL COMPENSATION WILL BE ALLOWED BECAUSE OF THIS WORK.

REVISIONS	
REDRAWN	2-15-89
REVISED	8-15-94
CHECKED	6-3-99
RESIZED	5-7-08

STD. 9-16

FILE NAME =	USER NAME = porterc	DESIGNED - LUKE MURPHY	REVISED -
c:\pwork\pwork\porterc\0242339\7812.mso.dgn		DRAWN - LUKE MURPHY	REVISED -
	PLOT SCALE = 60.0000' / in.	CHECKED -	REVISED -
	PLOT DATE = 10/17/2012	DATE -	REVISED -

**STATE OF ILLINOIS  
DEPARTMENT OF TRANSPORTATION**

**MISCELLANEOUS DETAILS**

SCALE: \_\_\_\_\_ SHEET \_\_\_\_\_ OF \_\_\_\_\_ SHEETS STA. \_\_\_\_\_ TO STA. \_\_\_\_\_

F.A.P. RTE.	SECTION	COUNTY	TOTAL SHEETS	SHEET NO.
885	LIB-1	HARDIN	50	20
CONTRACT NO. 78152				
ILLINOIS FED. AID PROJECT				

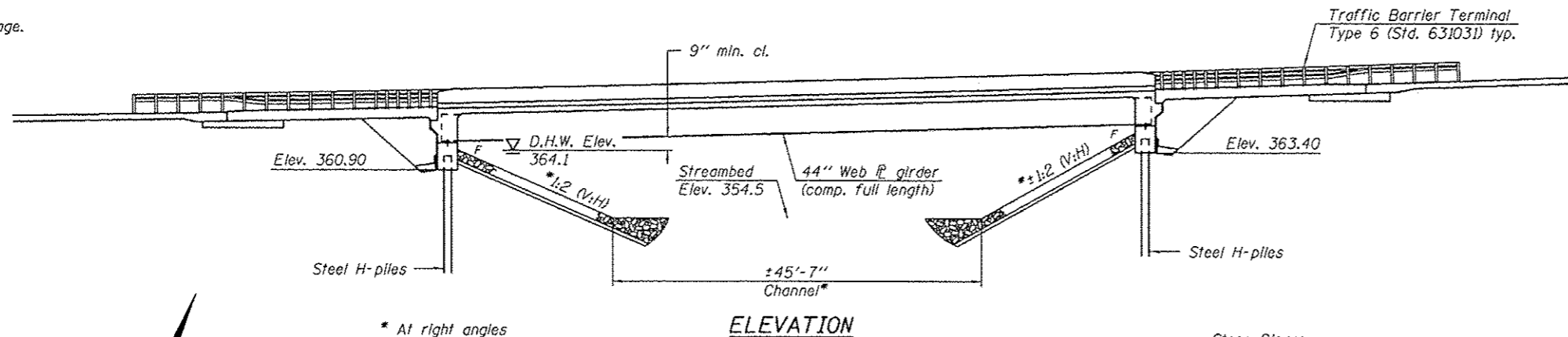
Benchmark: B.M. W-63, chiseled "□" on northwest corner of bridge on curb. Elev. 370.781 NAVD

Existing structure: S.N. 035-0012 built 1952 as F.A. Route 35, Section 11-B-1 at station 228+28 as a 3-span reinforced concrete T-beam (haunched) bridge. 122'-0" back-to-back abutments, 34'-2 1/2" out-to-out, supported on steel piles. Partial concrete deck removal in 1990 with 2 1/2" PPC overlay. Existing bridge to be removed and replaced. Traffic maintained utilizing stage construction.

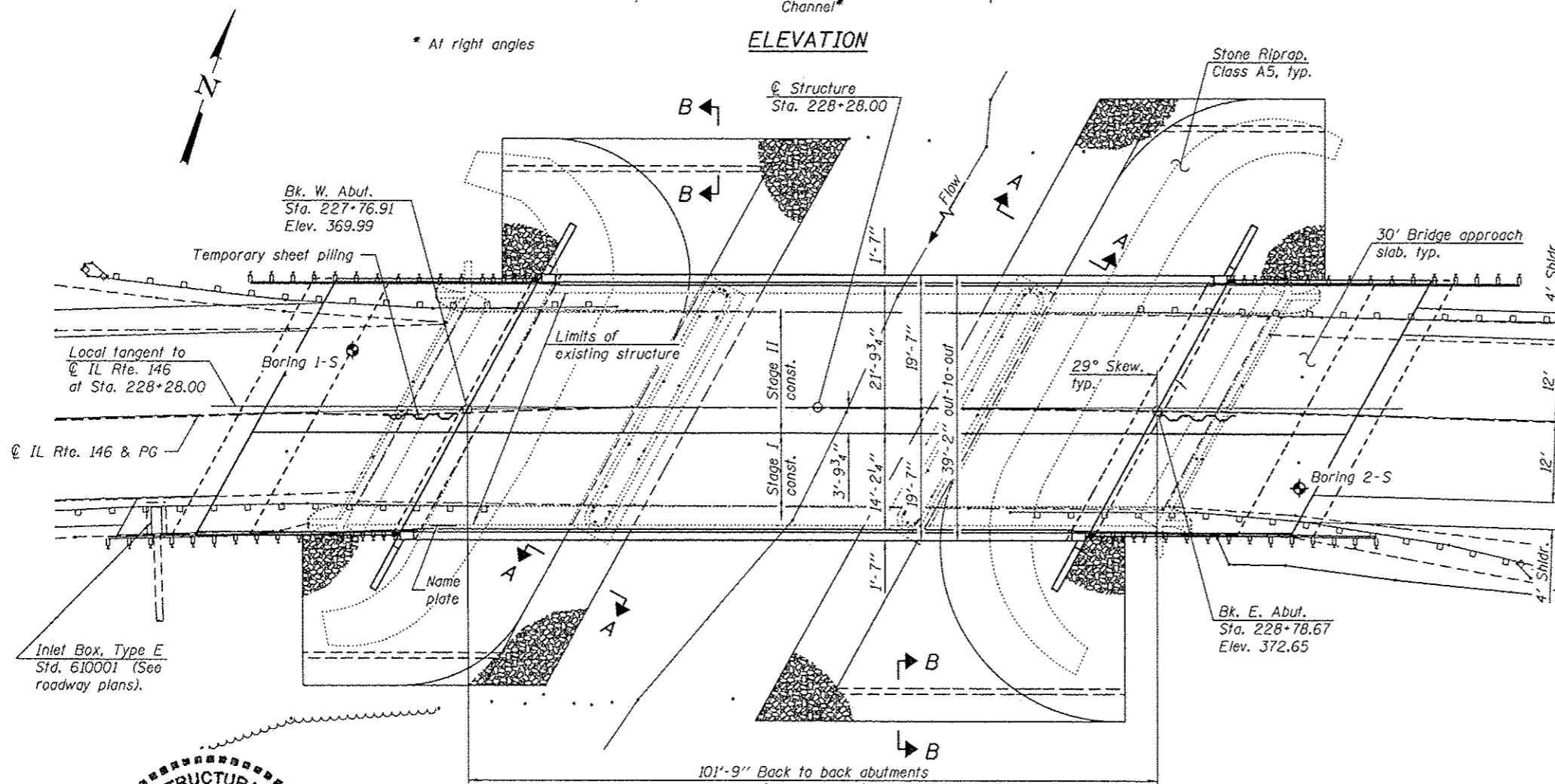
No salvage.

**INDEX OF SHEETS**

- 1 General Plan & Elevation
- 2 General Data
- 3 Stage Construction & Temporary Sheet Piling Details
- 4 Temporary Concrete Barrier for Stage Construction
- 5-6 Top of Slab Elevations
- 7 Top of West Approach Slab Elevations
- 8 Top of East Approach Slab Elevations
- 9 Superstructure
- 10 Superstructure Details
- 11 Integral Abutment Diaphragm Details
- 12-13 Bridge Approach Slab Details
- 14 Structural Steel
- 15 Structural Steel Details
- 16 West Abutment
- 17 East Abutment
- 18 Bar Splicer Assembly Details
- 19 HP Pile Details
- 20-21 Soil Boring Logs



**ELEVATION**



**PLAN**

**WATERWAY INFORMATION**

Drainage Area = 5.38 mi

Exist. Low Grade Elev. 367.30 @ Sta. 225+50  
Prop. Low Grade Elev. 367.30 @ Sta. 225+50

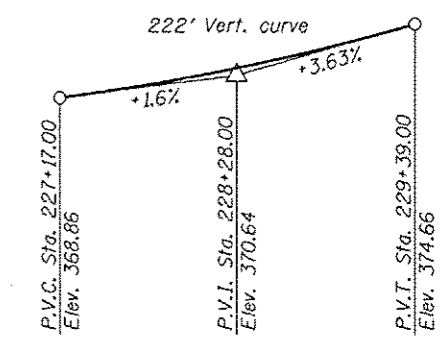
Flood	Freq. Yr.	C.F.S.	Opening Sq. Ft.		Nat. H.W.E.		Head - Ft.		Headwater El.	
			Exist.	Prop.	Exist.	Prop.	Exist.	Prop.	Exist.	Prop.
Design	50	3860	401.0	491.0	362.9	0.6	0.2	363.5	363.1	
Base	100	4460	516.0	616.0	364.5	1.2	0.4	365.7	364.9	
Max. Calc.	500	6050	602.0	705.0	365.6	1.8	0.7	367.4	366.3	

**DESIGN SCOUR ELEVATION TABLE**

Design Scour Elevation (ft.)	W. Abut.	E. Abut.
	360.90	363.40

STATION 228+28.00  
BUILT 20 BY  
STATE OF ILLINOIS  
F.A.P. RTE. 885 SEC. 11B-1  
LOADING HL-93  
STRUCTURE NO. 035-0016

**NAME PLATE**  
See Std. 515001



**PROFILE GRADE**  
(Along centerline of roadway)

**DESIGN SPECIFICATIONS**

2010 AASHTO LRFD Bridge Design Specifications with 2010 Interims

**DESIGN STRESSES**

**FIELD UNITS**

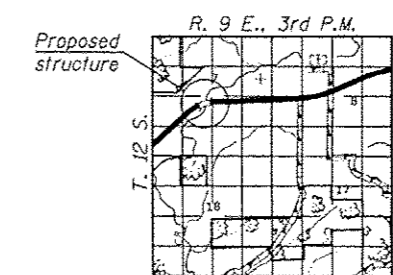
f'c = 3,500 psi  
fy = 60,000 psi (Reinforcement)  
fy = 50,000 psi (M270 Grade 50)  
fy = 36,000 psi (M270 Grade 36)

**LOADING HL-93**

Allow 50#/sq. ft. for future wearing surface.

**SEISMIC DATA**

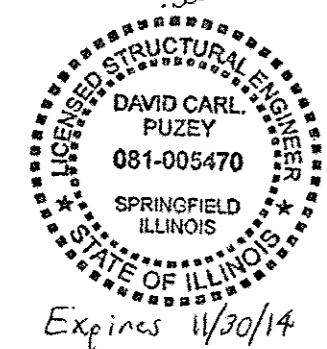
Seismic Performance Zone (SPZ) = 3  
Design Spectral Acceleration at 1.0 sec. (S<sub>01</sub>) = 0.334  
Design Spectral Acceleration at 0.2 sec. (S<sub>05</sub>) = 0.785  
Soil Site Class = D



**LOCATION SKETCH**

**GENERAL PLAN & ELEVATION**

**ILLINOIS ROUTE 146 OVER  
PETERS CREEK  
F.A.P. RTE. 885 - SEC. 11B-1  
HARDIN COUNTY  
STATION 228+28.00  
STRUCTURE NO. 035-0016**



# STRUCTURE PLAN SHEET

# STRUCTURE PLAN SHEET

# STRUCTURE PLAN SHEET



# STRUCTURE PLAN SHEET

# STRUCTURE PLAN SHEET

# STRUCTURE PLAN SHEET

# STRUCTURE PLAN SHEET

# STRUCTURE PLAN SHEET

# STRUCTURE PLAN SHEET

# STRUCTURE PLAN SHEET

STRUCTURE PLAN SHEET



# STRUCTURE PLAN SHEET

# STRUCTURE PLAN SHEET

STRUCTURE PLAN SHEET

STRUCTURE PLAN SHEET

# STRUCTURE PLAN SHEET

STRUCTURE PLAN SHEET

# STRUCTURE PLAN SHEET

# STRUCTURE PLAN SHEET



STRUCTURE PLAN SHEET

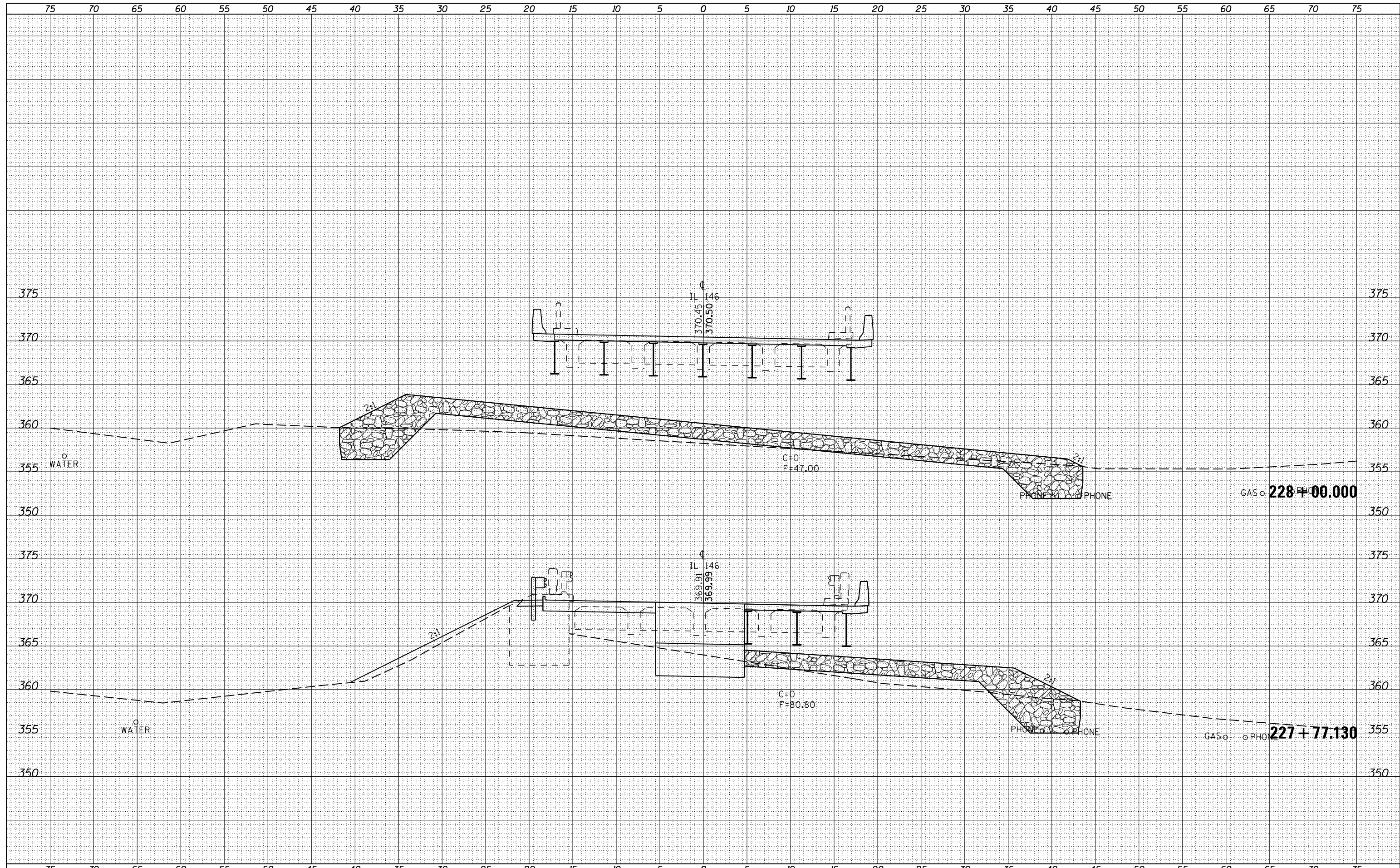






DATE	
BY	
FINAL SURVEY	
SURVEYED	
PLOTTED	
TEMPLATE	
NOTE BOOK	
AREAS CHECKED	
NO.	

DATE	
BY	
ORIGINAL SURVEY	
SURVEYED	
PLOTTED	
TEMPLATE	
NOTE BOOK	
AREAS CHECKED	
NO.	

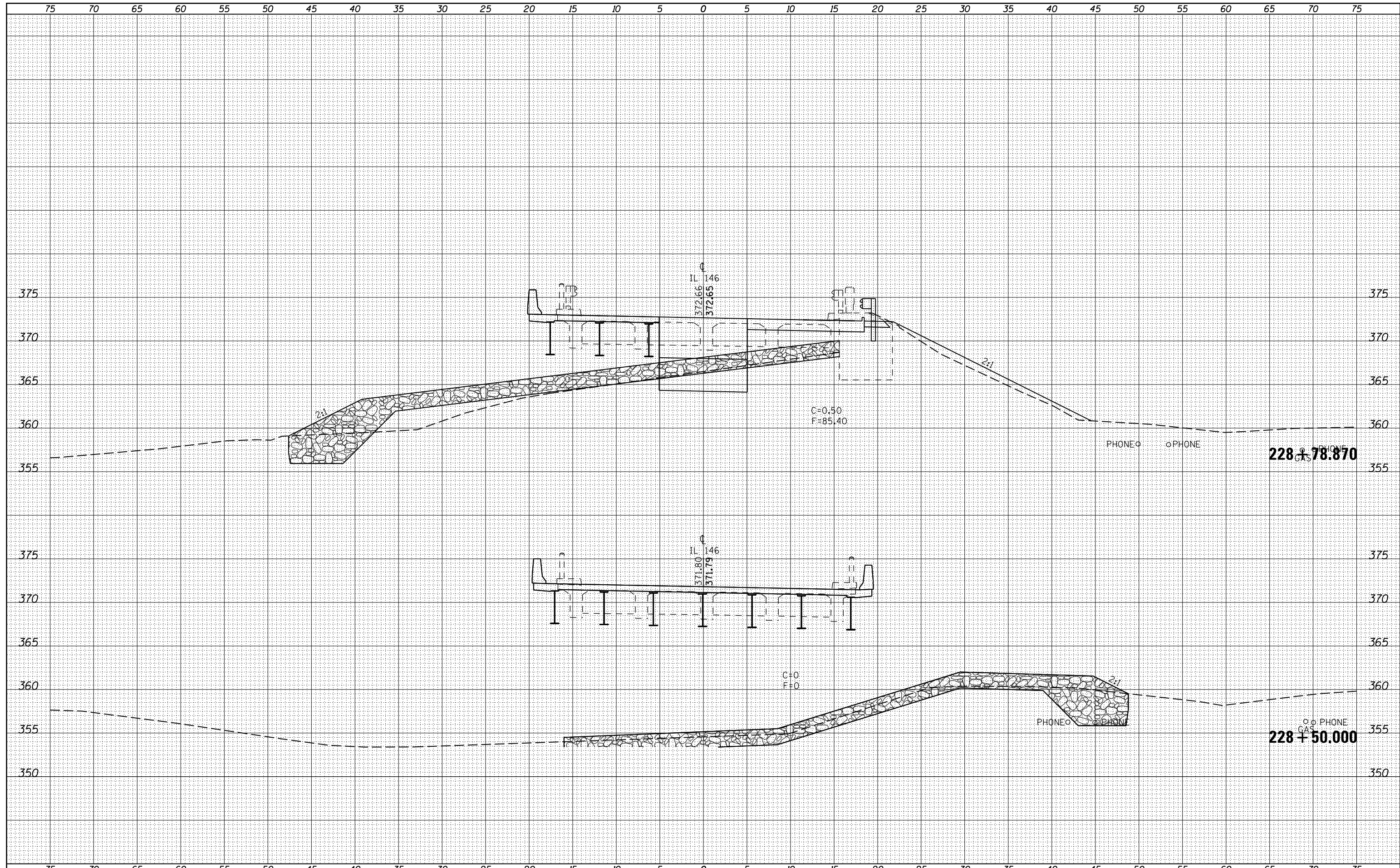


FILE NAME =	USER NAME = \$USERS	DESIGNED -	REVISED -	<b>STATE OF ILLINOIS</b> <b>DEPARTMENT OF TRANSPORTATION</b>	<b>CROSS SECTIONS</b>	F.A.P. RTE.	SECTION	COUNTY	TOTAL SHEETS	SHEET NO.	
es:\pw_work\pwidot\kellykd\0242339\78152-sh.tj	sections.dgn	DRAWN -	REVISED -			885	11B-1	HARDIN	50	45	
*MODELNAME*	PLOT SCALE = 10.0000' / in.	CHECKED -	REVISED -			CONTRACT NO. 78152					
	PLOT DATE = 10/17/2012	DATE -	REVISED -			ILLINOIS FED. AID PROJECT					
SCALE:						SHEET	OF	SHEETS	STA. 227+77.130 TO STA. 228+00.000		



DATE	
BY	
FINAL SURVEY	SURVEYED
NOTE BOOK	PLOTTED
NO.	TEMPLATE
	AREAS CHECKED

DATE	
BY	
ORIGINAL SURVEY	SURVEYED
NOTE BOOK	PLOTTED
NO.	TEMPLATE
	AREAS CHECKED



FILE NAME =	USER NAME = \$USERS	DESIGNED -	REVISD -	<b>STATE OF ILLINOIS</b> <b>DEPARTMENT OF TRANSPORTATION</b>	<b>CROSS SECTIONS</b>	F.A.P. RTE.	SECTION	COUNTY	TOTAL SHEETS	SHEET NO.	
es:\pw\work\pwidot\kellykd\0242339\78152-sh.tj	sections.dgn	DRAWN -	REVISD -			885	11B-1	HARDIN	50	46	
*MODELNAME*	PLOT DATE = 10/17/2012	CHECKED -	REVISD -			CONTRACT NO. 78152					
		DATE -	REVISD -			SCALE:	SHEET	OF	SHEETS	STA. 228+50.000	TO STA. 228+78.870

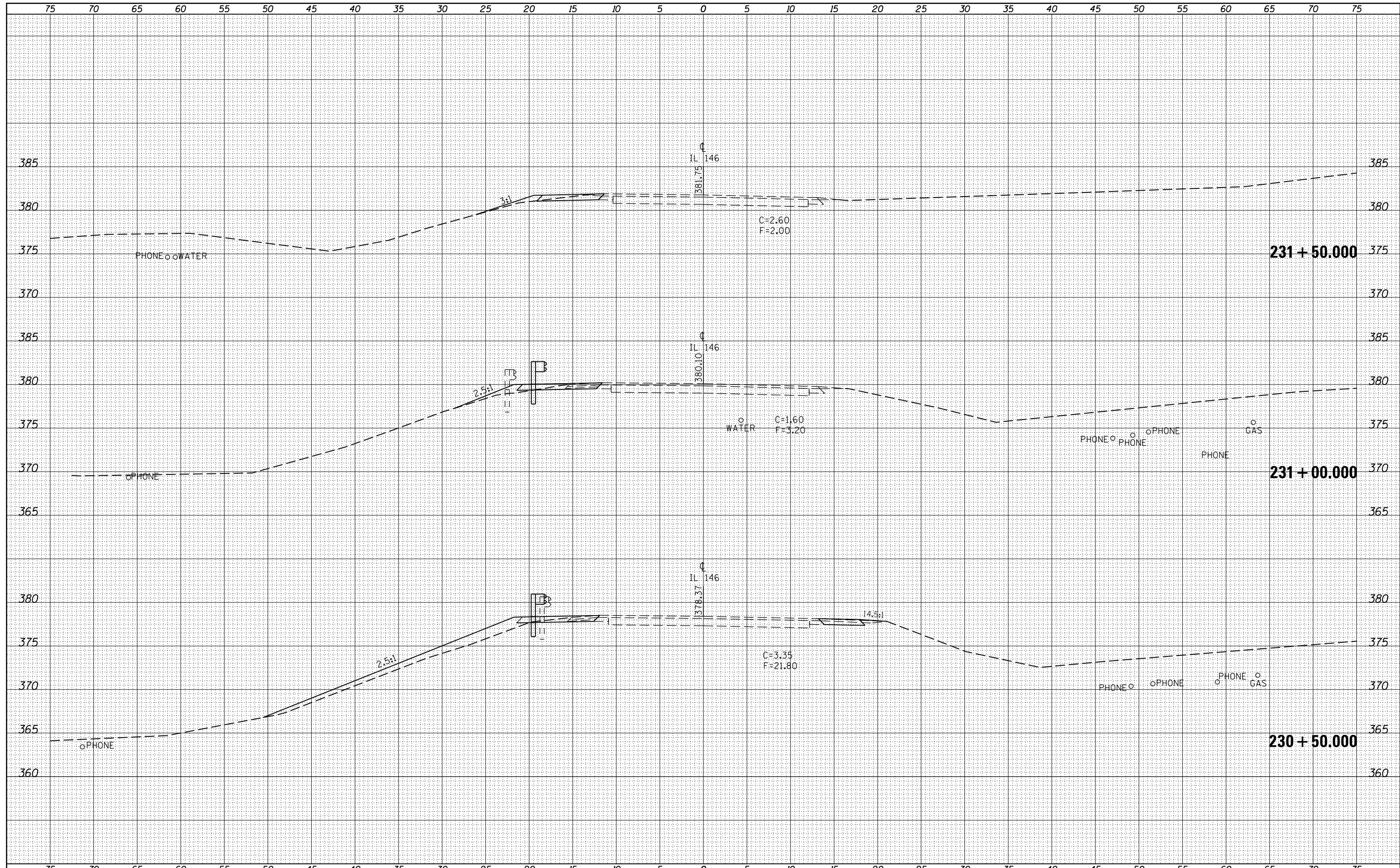






DATE	
BY	
ORIGINAL SURVEY NO.	
SURVEYED	
PLOTTED	
TEMPLATE	
AREAS	
CHECKED	

DATE	
BY	
ORIGINAL SURVEY NO.	
SURVEYED	
PLOTTED	
TEMPLATE	
AREAS	
CHECKED	

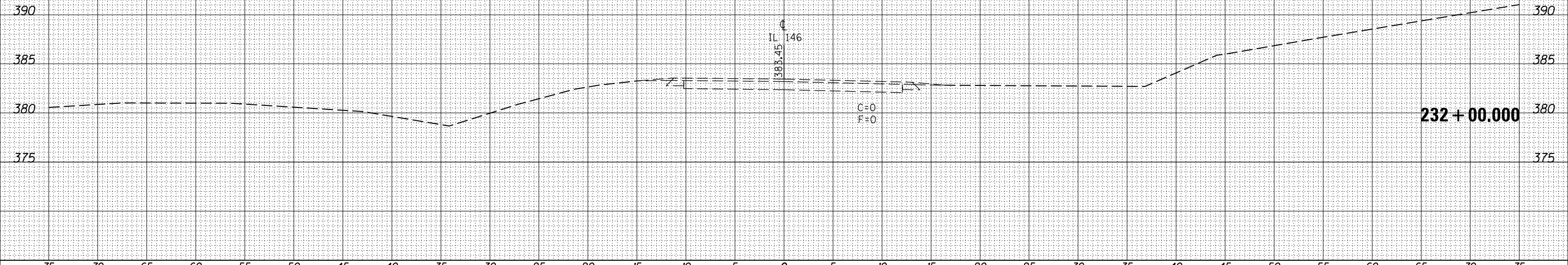


FILE NAME =	USER NAME = \$USERS	DESIGNED -	REVISSED -	<b>STATE OF ILLINOIS DEPARTMENT OF TRANSPORTATION</b>	<b>CROSS SECTIONS</b>			F.A.P. RTE.	SECTION	COUNTY	TOTAL SHEETS	SHEET NO.
es:\pw_work\pwidot\kellykd\0242339\78152-sh.tj\sections.dgn	DRAWN -	REVISSED -	885					11B-1	HARDIN	50	49	
PLOT SCALE = 10.0000' / in.	CHECKED -	REVISSED -	CONTRACT NO. 78152									
\$MODELNAME\$	DATE -	REVISSED -	SCALE:		SHEET	OF	SHEETS	STA. 230+50.000 TO STA. 231+50.000	ILLINOIS FED. AID PROJECT			

75 70 65 60 55 50 45 40 35 30 25 20 15 10 5 0 5 10 15 20 25 30 35 40 45 50 55 60 65 70 75

BY	DATE
FINAL SURVEY	SURVEYED
NOTE BOOK	PLOTTED
NO.	TEMPLATE
	AREAS
	CHECKED

BY	DATE
ORIGINAL SURVEY	SURVEYED
NOTE BOOK	PLOTTED
NO.	TEMPLATE
	AREAS
	CHECKED



FILE NAME =	USER NAME = \$USERS	DESIGNED -	REVISED -	<p align="center"><b>STATE OF ILLINOIS</b> <b>DEPARTMENT OF TRANSPORTATION</b></p> <p align="center"><b>CROSS SECTIONS</b></p>	F.A.P. RTE.	SECTION	COUNTY	TOTAL SHEETS	SHEET NO.
es:\pw\work\pwidot\kellykd\0242339\78152-sh.tj	xsections.dgn	DRAWN -	REVISED -		885	11B-1	HARDIN	50	50
	PLOT SCALE = 10.0000' / in.	CHECKED -	REVISED -		CONTRACT NO. 78152				
*MODELNAME*	PLOT DATE = 10/17/2012	DATE -	REVISED -		SCALE:	SHEET	OF	SHEETS	STA. 232+00.000
ILLINOIS FED. AID PROJECT									