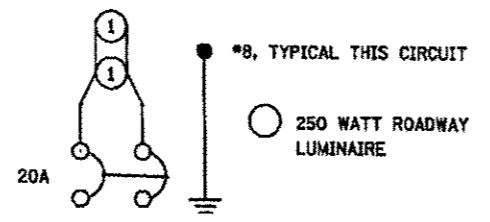


PROP. CURVE 453
 PI STA. = 1087+85.30
 $\Delta = 73^\circ 28' 29''$ (LT)
 $D = 7^\circ 16' 49''$
 $R = 787.00'$
 $T = 587.41'$
 $L = 1,009.23'$
 $E = 195.05'$
 $e =$
 $T.R. =$
 $S.E. RUN = 1081+97.89$
 $P.C. STA. = 1092+07.12$

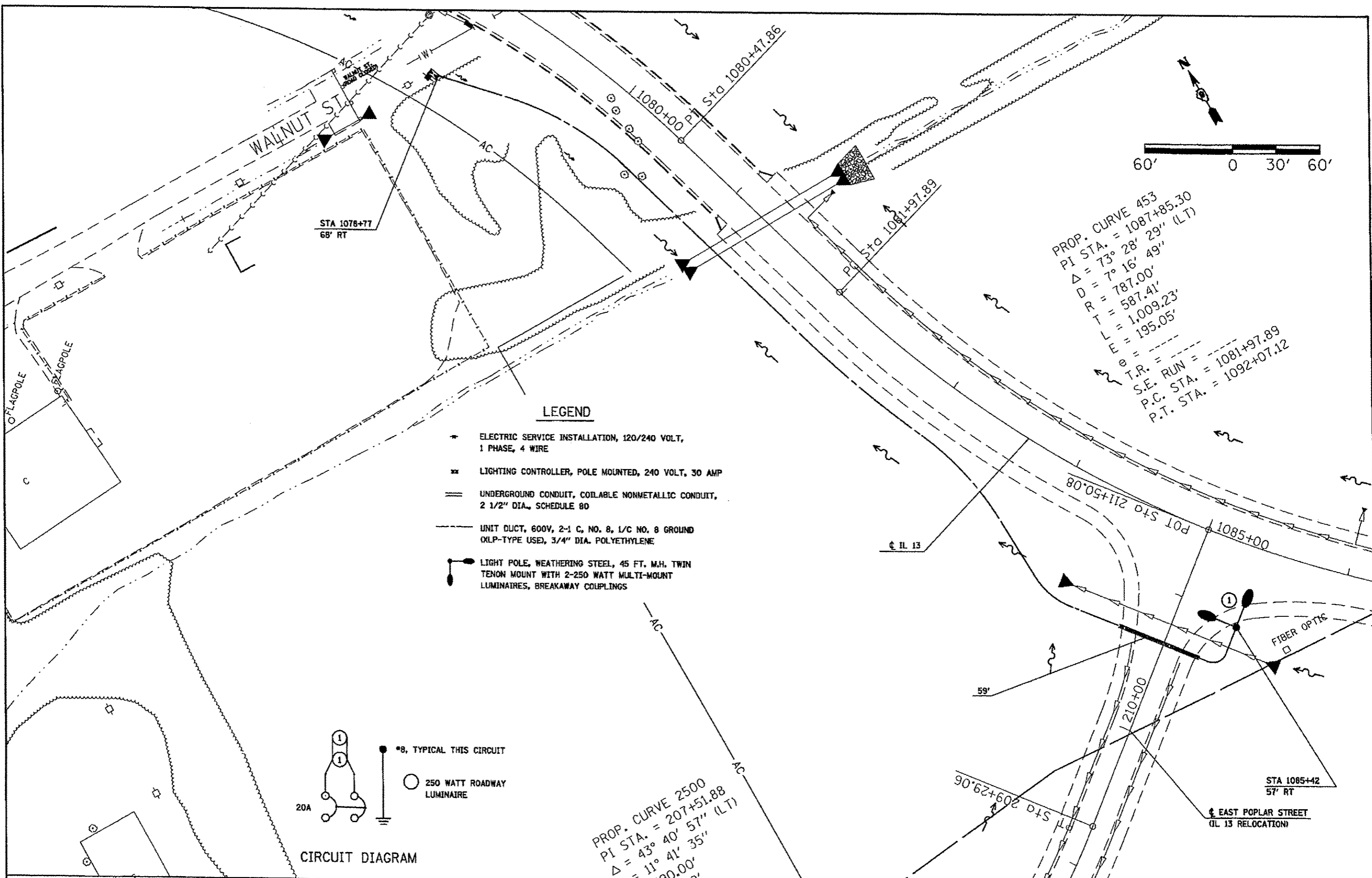
LEGEND

- ELECTRIC SERVICE INSTALLATION, 120/240 VOLT, 1 PHASE, 4 WIRE
- ⊗ LIGHTING CONTROLLER, POLE MOUNTED, 240 VOLT, 30 AMP
- ══ UNDERGROUND CONDUIT, COILABLE NONMETALLIC CONDUIT, 2 1/2" DIA., SCHEDULE 80
- UNIT DUCT, 600V, 2-1 C, NO. 8, 1/C NO. 8 GROUND (KLP-TYPE USE), 3/4" DIA. POLYETHYLENE
- ⦿ LIGHT POLE, WEATHERING STEEL, 45 FT. M.H. TWIN TENON MOUNT WITH 2-250 WATT MULTI-MOUNT LUMINAIRES, BREAKAWAY COUPLINGS



CIRCUIT DIAGRAM

PROP. CURVE 2500
 PI STA. = 207+51.88
 $\Delta = 43^\circ 40' 57''$ (LT)
 $D = 11^\circ 41' 35''$
 $R = 490.00'$



FILE NAME =	USER NAME = poosl	DESIGNED -	REVISED -	STATE OF ILLINOIS DEPARTMENT OF TRANSPORTATION	LOCATION 3 - IL 13E POPLAR ST LAYOUT AND CIRCUIT DIAGRAM		F.A.P. RTE.	SECTION	COUNTY	TOTAL SHEETS	SHEET NO.
ca\pwwork\pwwork\poosl\108315448\78330	10/15/2012	DRAWN -	REVISED -				331	(3-2,8X-1,4-2IL-1	SALINE	B	6
#MODELNAME#	PLOT SCALE = 60.0000 / 1 in.	CHECKED -	REVISED -				CONTRACT NO, 78330				
		DATE -	REVISED -				SCALE:	SHEET	OF	SHEETS	STA.