

PROP. CURVE BAZORE-1
 PI STA. = 203+38.65
 $\Delta = 39^\circ 41' 42''$ (RT)
 $D = 38^\circ 11' 50''$
 $R = 150.00'$
 $T = 54.14'$
 $L = 103.92'$
 $E = 9.47'$
 $\theta =$
 $T.R. =$
 $S.E. RUN =$
 P.C. STA. = 202+84.51
 P.T. STA. = 203+88.43

SECTION 11-00693-00-DR
 BEGINS
 STA. 204+25

PROPOSED TEMPORARY EASEMENT LINE
 PROPOSED COMBINATION CONCRETE
 CURB & GUTTER, TYPE B-6.18 (TYP.)
 STA. 205+65.00
 45.00' LT.
 STA. 205+65.00
 35.00' LT.
 PROPOSED TRAFFIC BARRIER TERMINAL
 TYPE 1 (SPECIAL) TANGENT &
 TRAFFIC BARRIER TERMINAL TYPE 6

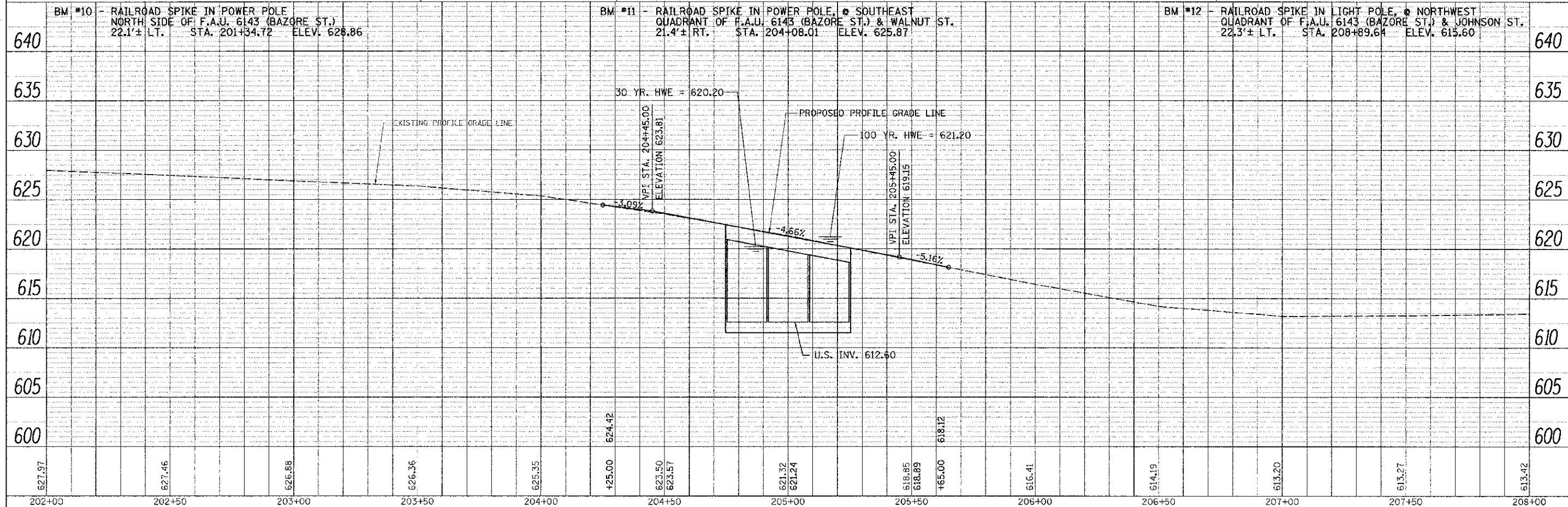
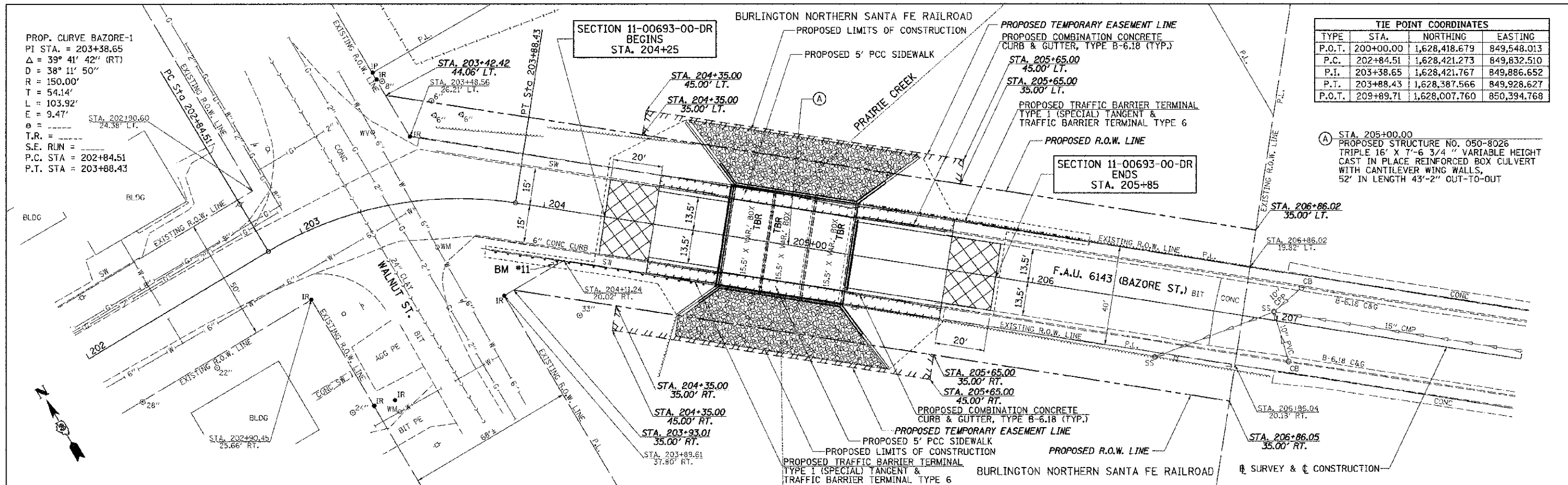
SECTION 11-00693-00-DR
 ENDS
 STA. 205+85

TIE POINT COORDINATES			
TYPE	STA.	NORTHING	EASTING
P.O.T.	200+00.00	1,628,418.679	849,548.013
P.C.	202+84.51	1,628,421.273	849,832.510
P.I.	203+38.65	1,628,421.767	849,886.652
P.T.	203+88.43	1,628,387.566	849,928.627
P.O.T.	209+89.71	1,628,007.760	850,394.768

(A) STA. 205+00.00
 PROPOSED STRUCTURE NO. 050-8026
 TRIPLE 16' X 7'-6 3/4" VARIABLE HEIGHT
 CAST IN PLACE REINFORCED BOX CULVERT
 WITH CANTILEVER WING WALLS,
 52' IN LENGTH 43'-2" OUT-TO-OUT

PLAN	DATE	BY

PROFILE	DATE	BY



FILE NAME:	USER NAME:	DESIGNED:	REVISED:	F.A.U. RTE.	SECTION	COUNTY	TOTAL SHEETS
V:\3045\3045p001.dgn	bdcrano			6143	11-00693-00-DR	LA SALLE	20
							7

STATE OF ILLINOIS
 DEPARTMENT OF TRANSPORTATION

F.A.U. 6143 (BAZORE ST.) PLAN & PROFILE

SCALE: H=20 V=5 SHEET NO. 1 OF 1 SHEETS STA. 202+00 TO STA. 208+00

FED. ROAD DIST. NO. 7 ILLINOIS FED. AID PROJECT BRM-5066(016)