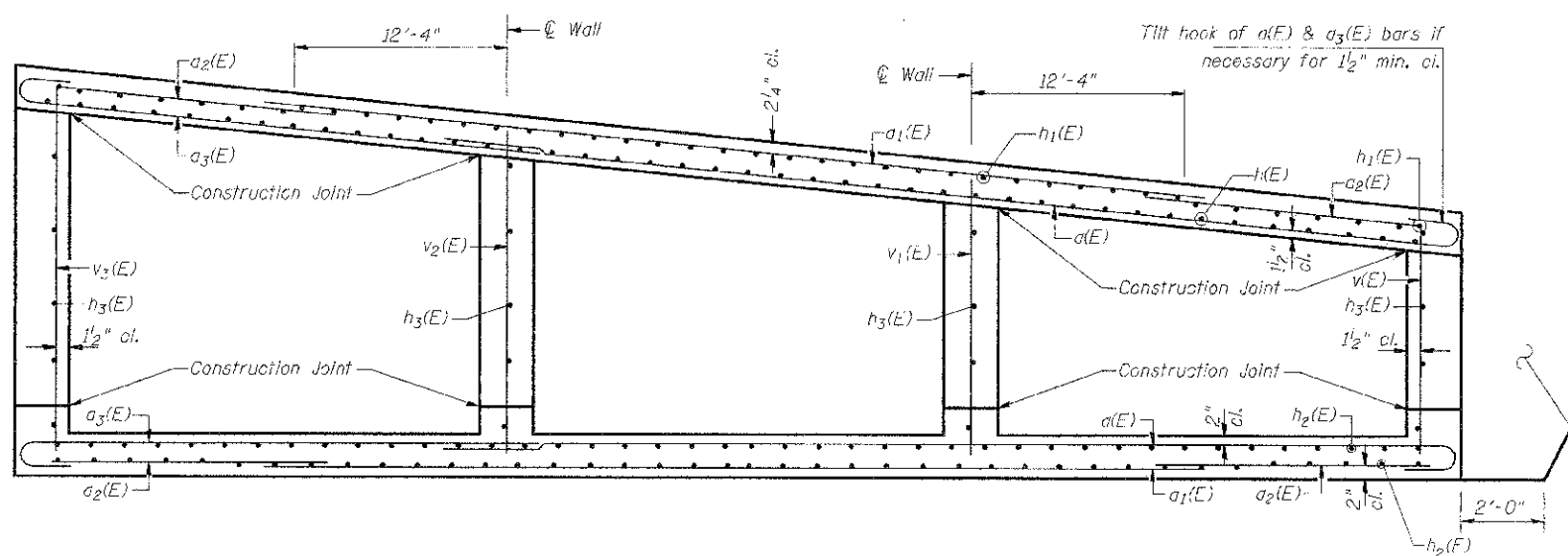
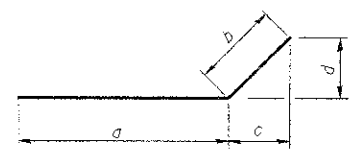


**END ELEVATION**  
Showing Dimensions (Downstream Looking Upstream)

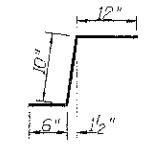


**SECTION THRU BARREL**  
Showing Reinforcement (Downstream Looking Upstream)

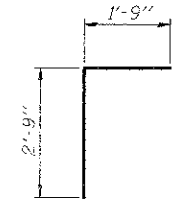


Bar	a	b	c	d
h4(E)	5'-0"	9'-9"	6'-10 3/4"	6'-10 3/4"
h5(E)	5'-0"	13'-9"	9'-8 5/8"	9'-8 5/8"
h6(E)	14'-0"	3'-0"	2'-1 1/2"	2'-1 1/2"
h7(E)	10'-0"	3'-0"	2'-1 1/2"	2'-1 1/2"

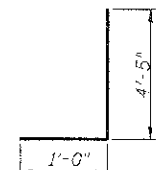
**BARS h4(E), h5(E), h6(E), & h7(E)**



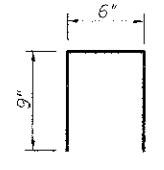
**BAR a(E)**



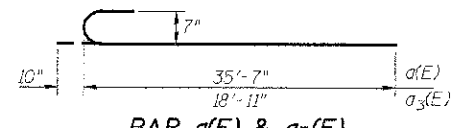
**BAR d(E)**



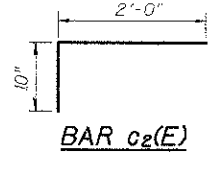
**BAR d1(E) & d2(E)**



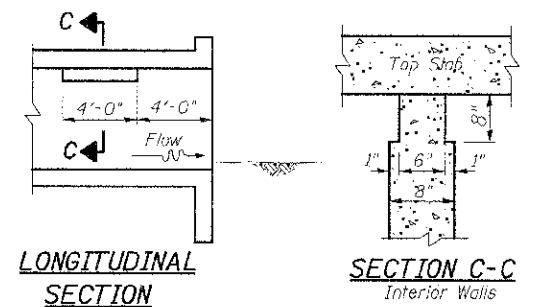
**BAR d3(E)**



**BAR a(E) & a3(E)**



**BAR c2(E)**



**LONGITUDINAL SECTION**

**SECTION C-C**  
Interior Walls

Note: Notch by rough-finished board attached to and removed with formwork, each interior wall. (Do not chamfer)

**PHOEBE NESTING SITE DETAIL**  
(Downstream End Only - Cost Included with Concrete Box Culverts)

**BILL OF MATERIAL**

Bar	No.	Size	Length	Shape
a(E)	150	#7	36'-5"	C
a1(E)	160	#6	41'-4"	—
a2(E)	160	#4	7'-2"	—
a3(E)	150	#7	19'-9"	C
b(E)	25	#5	26'-7"	—
c(E)	102	#5	2'-4"	L
c1(E)	102	#5	5'-3"	—
c2(E)	102	#5	2'-10"	L
d(E)	100	#4	4'-8"	L
d1(E)	102	#6	5'-5"	L
d2(E)	102	#4	5'-5"	L
d3(E)	28	#4	2'-0"	U
e(E)	16	#4	16'-5"	—
e1(E)	32	#4	16'-10"	—
e2(E)	32	#4	2'-6"	—
e3(E)	16	#4	8'-0"	—
e4(E)	16	#4	12'-0"	—
f(E)	88	#5	22'-9"	—
f1(E)	96	#4	22'-6"	—
f2(E)	192	#4	22'-6"	—
f3(E)	76	#5	22'-9"	—
f4(E)	34	#8	14'-9"	—
f5(E)	42	#8	18'-9"	—
f6(E)	44	#8	17'-0"	—
f7(E)	48	#8	13'-0"	—
f8(E)	12	#7	31'-4"	—
f9(E)	12	#6	26'-9"	—
f10(E)	12	#7	23'-0"	—
g(E)	58	#4	8'-3"	—
g1(E)	56	#4	9'-0"	—
g2(E)	56	#4	9'-9"	—
g3(E)	58	#4	10'-7"	—
g4(E)	44	#4	15'-7"	—
g5(E)	60	#4	13'-4"	—
Concrete Box Culverts	CU YD		305.2	
Reinforcement Bars, Epoxy Coated	POUND		51,710	

**CULVERT DETAILS**

SHEET NO. 4 6 SHEETS	F.A.U. RTE.	SECTION	COUNTY	TOTAL SHEETS	SHEET NO.
	6143	11-00693-00-DR	LA SALLE	20	15
S.N. 050-8026			CONTRACT NO. 87522		
FED. ROAD DIST. NO. 7		ILLINOIS	FED. AID PROJECT BRM-5066(016)		