

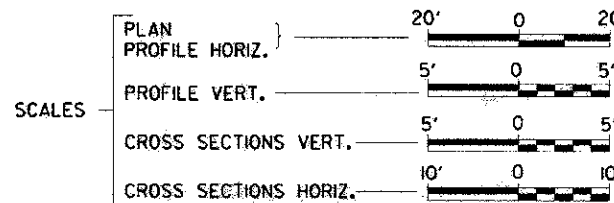
1-18-13 LETTING ITEM 096

**STATE OF ILLINOIS
DEPARTMENT OF TRANSPORTATION
PLANS FOR PROPOSED
HIGHWAY BRIDGE PROGRAM
LA SALLE COUNTY
SECTION 11-00693-00-DR
F.A.U. 6143 (BAZORE ST.) OVER
PRAIRIE CREEK IN STREATOR
PROJECT NO. BRM-5066(016)
JOB NUMBER C-93-056-12**

F.A.U. RTE. 6143	SECTION 11-00693-00-DR	COUNTY LA SALLE	TOTAL SHEETS 20	SHEET NO. 1
FED. ROAD DIST. NO. 7		ILLINOIS	CONTRACT NO. 87522	

INDEX OF SHEETS

SHEET NO.	DESCRIPTION
1	COVER SHEET
2	LIST OF STANDARDS, GENERAL NOTES AND LEGEND
3	SUMMARY OF QUANTITIES
4-5	TYPICAL SECTIONS
6	SCHEDULES OF QUANTITIES
7	PLAN & PROFILE
8	EROSION CONTROL & PAVEMENT MARKING PLAN
9	GRADING PLAN
10	R. O. W. PLAT
11	SPECIAL DETAILS
12-17	STRUCTURE PLANS
18-20	CROSS SECTIONS

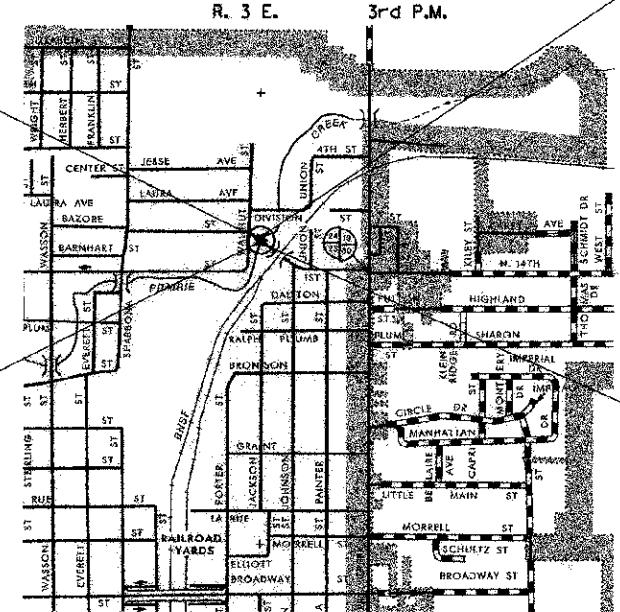


SECTION 11-00693-00-DR
BEGINS
STATION 204+25

EXISTING STRUCTURE NO. 050-8006
TRIPLE 15.5' X 6'-9 5/8" VARIABLE
HEIGHT CAST IN PLACE REINFORCED
BOX CULVERT WITH PARAPET,
52' IN LENGTH 42' OUT-TO-OUT

PROPOSED STRUCTURE NO. 050-8026
TRIPLE 16' X 7'-6 3/4" VARIABLE HEIGHT
CAST IN PLACE REINFORCED BOX CULVERT
WITH CANTILEVER WING WALLS,
52' IN LENGTH 43'-2" OUT-TO-OUT

SECTION 11-00693-00-DR
ENDS
STATION 205+85



LOCATION MAP
1" = 1/16 MI
APPROXIMATE SCALE

NET LENGTH OF PROJECT = 160.00 FEET = 0.03 MILES
DESIGN CLASSIFICATION: URBAN ARTERIAL
DESIGN ADT = 4870 (2012)
DESIGN SPEED = 30 MPH

UTILITY COMPANIES

COMED
JOLIET, ILLINOIS

NICOR GAS
OTTAWA, ILLINOIS

MEDIACOM
ELBURN, ILLINOIS

FRONTIER
SYCAMORE, ILLINOIS

ILLINOIS AMERICAN WATER CO.
STREATOR, ILLINOIS

CITY OF STREATOR
STREATOR, ILLINOIS

J.U.L.I.E.
JOINT UTILITY LOCATION INFORMATION FOR EXCAVATION
1-800-892-8123
OR 811

CONTRACT NO. 87522

PLANS DESIGNED IN ACCORDANCE WITH BUREAU
OF LOCAL ROADS AND STREETS MANUAL GUIDELINES
FOR TWO LANE RURAL LOCAL ROADS - RECONSTRUCTION

APPROVED *[Signature]* 2012

MAYOR, CITY OF STREATOR

APPROVED *[Signature]* 2012

LA SALLE COUNTY ENGINEER

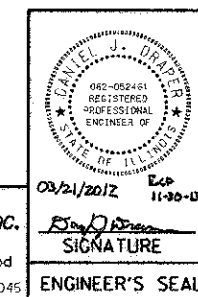
PASSED *[Signature]* April 9, 2012

DISTRICT THREE IMPLEMENTATION ENGINEER

Released For
Bid Based on
Limited Review *[Signature]* April 9, 2012

DEPUTY DIRECTOR OF HIGHWAYS,
REGION TWO ENGINEER

STATE OF ILLINOIS
DEPARTMENT OF TRANSPORTATION



Hutchison Engineering, Inc.
Jacksonville - Since 1945 - Shorewood
2012 JOB #3045

3045C001

GENERAL NOTES

THE CONTRACTOR WILL BE REQUIRED TO COMPLY WITH ALL STATE REGULATIONS REGARDING AIR, WATER AND NOISE POLLUTION. HE WILL NOT BE ALLOWED TO BUILD FIRES ON THE SITE.
 THE SCALE SHOWN ON THE DRAWINGS APPLIES ONLY TO FULL SIZE PLANS AND NOT TO THE REDUCED SIZE PLANS.

IT IS THE CONTRACTOR'S RESPONSIBILITY TO ASCERTAIN EXISTING FIELD CONDITIONS BEFORE BIDDING ON THIS PROJECT, SPECIFICALLY AS THEY RELATE TO THE LUMP SUM PAY ITEMS.

THE LOCATIONS OF KNOWN UTILITIES AS SHOWN ON THE PLANS ARE APPROXIMATE AND DOES NOT GUARANTEE THEIR ACCURACY. THE CONTRACTOR SHALL VERIFY THE LOCATION OF THESE UTILITIES AND THE EXISTENCE AND LOCATION OF ANY UTILITY NOT SHOWN ON THE PLANS.

THE CONTRACTOR SHALL NOTIFY THE UTILITIES AT LEAST TEN (10) DAYS PRIOR TO ANY CONSTRUCTION IN THE AREA AND SHALL COMPLY WITH ALL RESTRICTIONS FOR EQUIPMENT MOVEMENTS AND CLEARANCES AS REGARDS TO THEIR FACILITIES.

BEFORE STARTING ANY EXCAVATION, THE CONTRACTOR MUST CALL J.U.L.I.E. AT 1-800-892-0123 FOR FIELD LOCATIONS OF BURIED ELECTRICAL, TELEPHONE, GAS FACILITIES, AND ALL PUBLIC UTILITIES. A 48 HOUR NOTIFICATION IS REQUIRED.

THE CONTRACTOR SHALL USE ALL NECESSARY PRECAUTIONS AND PROTECTIVE MEASURES REQUIRED TO MAINTAIN EXISTING UTILITIES, SEWER AND APPURTENANCES THAT MUST BE KEPT IN OPERATION. IN PARTICULAR, THE CONTRACTOR WILL TAKE ADEQUATE MEASURES TO PREVENT THE UNDERMINING OF UTILITIES AND SEWERS WHICH ARE STILL IN SERVICE.

IT IS THE CONTRACTOR'S RESPONSIBILITY TO VERIFY ALL DIMENSIONS AND CONDITIONS EXISTING IN THE FIELD PRIOR TO CONSTRUCTION AND ORDERING MATERIALS.

THE CONTRACTOR SHALL BE REQUIRED TO PROVIDE ACCESS TO ABUTTING PROPERTIES AT ALL TIMES DURING CONSTRUCTION OF THE PROJECT.

IF ANY LOOSE MATERIAL IS DEPOSITED DURING CONSTRUCTION OPERATIONS IN THE FLOW LINE OF DITCHES, GUTTERS OR DRAINAGE STRUCTURES SO THAT IT RESTRICTS THE NATURAL FLOW OF WATER, IT SHALL BE REMOVED AT THE CLOSE OF EACH WORKING DAY. AT THE CONCLUSION OF CONSTRUCTION OPERATIONS, ALL DRAINAGE STRUCTURES SO AFFECTED SHALL BE FREE FROM ALL DEBRIS. THIS WORK SHALL BE CONSIDERED INCLUDED IN THE COST OF THIS CONTRACT.

ALL FRAMES, GRATES, SIGNS, FENCES AND DELINEATORS, NEW OR EXISTING, DAMAGED BY THE CONTRACTOR DURING CONSTRUCTION SHALL BE REPLACED BY THE CONTRACTOR AT HIS EXPENSE.

EXISTING PAVEMENT, SIDEWALK, DRIVEWAY PAVEMENT, CURB AND GUTTER AND EXISTING DRAINAGE STRUCTURES NOT INCLUDED IN THE PLANS FOR REMOVAL, BUT DAMAGED DUE TO THE CONTRACTOR'S OPERATIONS SHALL BE REPLACED AT THE EXPENSE OF THE CONTRACTOR.

TRAFFIC SIGNS REMOVED MUST BE RESET AT THEIR PERMANENT LOCATIONS IN A WORKMANLIKE MANNER AND BE VISIBLE TO TRAFFIC ON THE ROADWAY AS DIRECTED BY THE ENGINEER. THESE SIGNS SHALL BE RESET BEFORE THE ROADWAY IS OPEN TO TRAFFIC. COST OF SUCH WORK SHALL BE CONSIDERED INCLUDED IN THE COST OF THE CONTRACT.

NO WORK SHALL COMMENCE UNTIL TRAFFIC CONTROL REQUIREMENTS ARE MET.

ALL SCHOOL DISTRICTS, LOCAL POLICE DEPARTMENTS AND FIRE DEPARTMENTS SHALL BE NOTIFIED BY THE CONTRACTOR AT LEAST TEN (10) DAYS PRIOR TO THE START OF CONSTRUCTION.

WHERE SECTION OR SUB-SECTION MONUMENTS ARE ENCOUNTERED, THE ENGINEER SHALL BE NOTIFIED BEFORE SUCH MONUMENTS ARE REMOVED. THE CONTRACTOR SHALL PROTECT AND CAREFULLY PRESERVE ALL PROPERTY MARKS AND MONUMENTS UNTIL THE OWNER AND AUTHORIZED SURVEYOR OR AGENT HAS WITNESSED OR OTHERWISE REFERENCED THEIR LOCATION.

ALL EXISTING GRANULAR MATERIAL AND HOT-MIX ASPHALT MATERIALS TO BE REMOVED AND NOT PAID AS A SPECIFIC ITEM SHALL BE CONSIDERED EARTH EXCAVATION AND WILL BE PAID FOR AT THE UNIT PRICE FOR EARTH EXCAVATION. THE CONTRACTOR WILL HAVE THE OPTION OF REMOVING THE EXISTING HOT-MIX ASPHALT MATERIAL BY GRINDING OR EXCAVATING THE MATERIAL. IF THE HOT-MIX ASPHALT MATERIAL IS REMOVED BY EXCAVATION, NO SUCH MATERIAL MAY BE USED IN EMBANKMENT AREAS UNLESS SPECIFICALLY AUTHORIZED BY THE ENGINEER.

EXCAVATION FOR PLACEMENT OF RIPRAP SHALL BE INCLUDED IN THE COST OF THE RIPRAP.

ALL EMBANKMENTS AND SUB-GRADE SHALL BE COMPACTED TO THE SATISFACTION OF THE ENGINEER PRIOR TO PLACING SUB-BASE GRANULAR MATERIAL.

UTILITY POLES, PEDESTALS, MANHOLES AND FIRE HYDRANTS TO REMAIN IN PLACE SHALL NOT BE DISTURBED BY THE CONTRACTOR. FINISHING AROUND THESE POLES, PEDESTALS, MANHOLES OR HYDRANTS SHALL BE THE RESPONSIBILITY OF THE CONTRACTOR AND SHALL BE INCLUDED IN THE COST OF EARTH EXCAVATION.

THE MAXIMUM COMPACTED THICKNESS OF A LIFT OF BASE COURSE WILL BE 4" UNLESS OTHERWISE AUTHORIZED BY THE ENGINEER.

ADJUSTMENTS OF STRUCTURES MAINTAINED BY OTHER AGENCIES SHALL BE MADE TO THE SATISFACTION OF THE ENGINEER AND THE AGENCY MAINTAINING THE SYSTEM OF THE STRUCTURE INVOLVED.

ALL FIELD TILES ENCOUNTERED SHALL BE CAREFULLY PRESERVED AND CONNECTED TO PROPOSED DRAINAGE STRUCTURES, SEWERS OR DITCHES AS DIRECTED BY THE ENGINEER. THIS WORK WILL BE PAID IN ACCORDANCE WITH ARTICLE 109.04.

TREES NOT MARKED FOR REMOVAL SHALL BE CONSIDERED AS DESIGNATED TO BE SAVED AND SHALL BE PROTECTED UNDER THE PROVISIONS OF ARTICLE 201.05.

ALL CLEARING, REMOVAL OF BUSHES, HEDGES AND TREES UNDER 6" DIAMETER WILL BE INCLUDED IN THE COST OF EARTH EXCAVATION.

TOPSOIL SHALL BE PLACED AT A DEPTH OF FOUR INCHES (4").

THE CROSS SECTIONS INDICATE THE FINISHED GRADE OF TOP SOIL.

ALL CONSTRUCTION PERSONNEL WILL BE REQUIRED TO WEAR FLUORESCENT ORANGE VESTS AT ALL TIMES WHILE ON THE CONSTRUCTION SITE. COMPLIANCE WITH THIS REQUIREMENT SHALL BE CONSIDERED INCLUDED IN THE COST OF THE CONTRACT.

EXCEPT AS NOTED ON THE PLANS, PAVEMENT GRADES SHOWN ARE AT THE TOP OF PAVEMENT SURFACES.

THE ENGINEER WILL BE THE SOLE JUDGE CONCERNING CURING TIME FOR THE VARIOUS HMA LIFTS.

FOR STABILIZATION, ALL TYPE III BARRICADES SHALL REQUIRE A MINIMUM OF FOUR SAND BAGS PER BARRICADE.

SEEDING SHALL NOT BE PERMITTED AT ANY TIME WHEN THE GROUND IS FROZEN, WET, OR IN AN UNTILLABLE CONDITION. LOCATIONS TO BE SEEDED WILL BE DETERMINED BY THE ENGINEER.

ALL ELEVATIONS REFER TO U.S.G.S. MEAN SEA LEVEL DATUM.

ABANDONED UNDERGROUND UTILITIES THAT CONFLICT WITH CONSTRUCTION SHALL BE DISPOSED OF OUTSIDE THE LIMITS OF THE RIGHT OF WAY ACCORDING TO ARTICLE 202.03 OF THE STANDARD SPECIFICATIONS AND AS DIRECTED BY THE ENGINEER. THIS WORK WILL NOT BE PAID FOR SEPARATELY, BUT SHALL BE INCLUDED IN THE COST OF EARTH EXCAVATION.

ANY REFERENCE TO A STANDARD IN THESE PLANS SHALL BE INTERPRETED TO MEAN THE EDITION AS INDICATED BY THE SUBNUMBER SHOWN IN THE LIST OF STANDARDS OR THE COPY INCLUDED IN THESE PLANS.

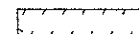

THE FOLLOWING RATES OF APPLICATION HAVE BEEN ASSUMED IN CALCULATING PLAN QUANTITIES:

GRANULAR MATERIALS	2.05 TONS/CU YD	
BITUMINOUS MATERIALS PRIME COAT	0.08 GAL/SQ YD OR	
	0.375 GAL/SQ YD	
AGGREGATE PRIME COAT	0.002 TONS/SQ YD	
HOT-MIX ASPHALT SURFACE COURSE	112 LBS/SQ YD/INCH	
HOT-MIX ASPHALT BINDER COURSE	115 LBS/SQ YD/INCH	
LEVELING BINDER (MACHINE METHOD)	112 LBS/SQ YD/INCH	
NITROGEN FERTILIZER NUTRIENT	60 LBS/ACRE (SODDING)	90 LBS/ACRE (SEEDING)
PHOSPHORUS FERTILIZER NUTRIENT	60 LBS/ACRE (SODDING)	90 LBS/ACRE (SEEDING)
POTASSIUM FERTILIZER NUTRIENT	60 LBS/ACRE (SODDING)	90 LBS/ACRE (SEEDING)

LIST OF STANDARDS

000001-06	STANDARD SYMBOLS, ABBREVIATIONS AND PATTERNS
001001-02	AREAS OF REINFORCEMENT BARS
280001-06	TEMPORARY EROSION CONTROL SYSTEMS
420401-08	BRIDGE APPROACH PAVEMENT CONNECTOR
515001-03	NAME PLATE FOR BRIDGES
606001-04	CONCRETE CURB TYPE B AND COMBINATION CONCRETE CURB AND GUTTER
630001-10	STEEL PLATE BEAM GUARDRAIL
630301-05	SHOULDER WIDENING FOR TYPE 1 (SPECIAL) GUARDRAIL TERMINALS
631031-10	TRAFFIC BARRIER TERMINAL, TYPE 6
635006-03	REFLECTOR AND TERMINAL MARKER PLACEMENT
635011-02	REFLECTOR MARKER AND MOUNTING DETAILS
701501-06	URBAN LANE CLOSURE, 2L, 2W, UNDIVIDED
701801-05	SIDEWALK, CORNER OR CROSSWALK CLOSURE
701901-02	TRAFFIC CONTROL DEVICES
780001-03	TYPICAL PAVEMENT MARKINGS
B.L.R. 21-9	TYPICAL APPLICATION OF TRAFFIC CONTROL DEVICES FOR CONSTRUCTION ON RURAL LOCAL HIGHWAYS
B.L.R. 22-7	TYPICAL APPLICATION OF TRAFFIC CONTROL DEVICES FOR CONSTRUCTION ON RURAL LOCAL HIGHWAYS (TWO-LANE TWO-WAY RURAL TRAFFIC) (ROAD CLOSED TO THRU TRAFFIC)

LEGEND

	PCC SIDEWALK, CURB, CURB & GUTTER REMOVAL
	HOT-MIX ASPHALT SURFACE REMOVAL

FILE NAME = v:\3045\3045\01.con	USER NAME = bdenance	DESIGNED -	REVISED -	STATE OF ILLINOIS DEPARTMENT OF TRANSPORTATION	F.A.U. 6143 (BAZORE ST.) LIST OF STANDARDS, GENERAL NOTES AND LEGEND		F.A.U. RTE. 6143	SECTION 11-00693-00-0R	COUNTY LA SALLE	TOTAL SHEETS 20	SHEET NO. 2	
	PLOT SCALE = 1/8" = 1' IN.	DRAWN -	REVISED -		SCALE: N/A	SHEET NO. 1 OF 1 SHEETS	STA. N/A	TO STA. N/A	CONTRACT NO. 87522			
	PLOT DATE = 3/21/2012	CHECKED -	REVISED -		FED. ROAD DIST. NO. 7 ILLINOIS FED. AID PROJECT BRN-5066(016)							
		DATE -	REVISED -									

SUMMARY OF QUANTITIES

ITEM NO.	SPECIALTY ITEM &/OR SPECIAL PROVISION	CODE NO.	DESCRIPTION	UNIT	TOTAL QUANTITY	CONSTRUCTION TYPE CODE	
						ROADWAY 0004	STRUCTURE 0011
1		20100500	TREE REMOVAL, ACRES	ACRE	0.03	0.03	
2	SP	20200100	EARTH EXCAVATION	CU YD	103	103	
3		20201200	REMOVAL AND DISPOSAL OF UNSUITABLE MATERIAL	CU YD	84		84
4		20700220	POROUS GRANULAR EMBANKMENT	CU YD	260		260
5		21101615	TOPSOIL FURNISH AND PLACE, 4"	SQ YD	242	242	
6		25000210	SEEDING, CLASS 2A	ACRE	0.06	0.06	
7		25000400	NITROGEN FERTILIZER NUTRIENT	POUND	6	6	
8		25000500	PHOSPHORUS FERTILIZER NUTRIENT	POUND	6	6	
9		25000600	POTASSIUM FERTILIZER NUTRIENT	POUND	6	6	
10		25100115	MULCH, METHOD 2	ACRE	0.12	0.12	
11		25100630	EROSION CONTROL BLANKET	SQ YD	252	252	
12	BDE	28000250	TEMPORARY EROSION CONTROL SEEDING	POUND	24	24	
13		28000400	PERIMETER EROSION BARRIER	FOOT	177	177	
14		28100109	STONE RIPRAP, CLASS A5	SQ YD	349		349
15		28200200	FILTER FABRIC	SQ YD	349		349
16	SP	30300112	AGGREGATE SUBGRADE IMPROVEMENT 12"	SQ YD	216	216	
17		40600100	BITUMINOUS MATERIALS (PRIME COAT)	GALLON	95	95	
18	BDE	40603080	HOT-MIX ASPHALT BINDER COURSE, IL-19.0, N50	TON	108	108	
19	BDE	40603310	HOT-MIX ASPHALT SURFACE COURSE, MIX "C", N50	TON	23	23	
20		42001300	PROTECTIVE COAT	SQ YD	32	32	
21	BDE	42400100	PORTLAND CEMENT CONCRETE SIDEWALK 4 INCH	SQ FT	694	694	
22		44000100	PAVEMENT REMOVAL	SQ YD	242	242	
23		44000157	HOT-MIX ASPHALT SURFACE REMOVAL, 2"	SQ YD	127	127	
24		44000300	CURB REMOVAL	FOOT	125	125	
25		44000600	SIDEWALK REMOVAL	SQ FT	605	605	
26	SP	50100100	REMOVAL OF EXISTING STRUCTURES	EACH	1		1
27		50300300	PROTECTIVE COAT	SQ YD	275		275
28		50800205	REINFORCEMENT BARS, EPOXY COATED	POUND	51710		51710
29	SI	50900105	ALUMINUM RAILING, TYPE L	FOOT	98		98
30		51500100	NAME PLATES	EACH	1		1
31		54003000	CONCRETE BOX CULVERTS	CU YD	305.2		305.2
32		60604400	COMBINATION CONCRETE CURB AND GUTTER, TYPE B-6.18	FOOT	140	140	
33	SZ	63100085	TRAFFIC BARRIER TERMINAL, TYPE 6	EACH	2	2	
34	SZ	63100167	TRAFFIC BARRIER TERMINAL, TYPE 1 (SPECIAL) TANGENT	EACH	2	2	
35		67100100	MOBILIZATION	L SUM	1	1	
36	SI	78005110	EPOXY PAVEMENT MARKING - LINE 4"	FOOT	320	320	
37	RSP, SZ	78200410	GUARDRAIL MARKERS, TYPE A	EACH	8	8	
38	SI	78201000	TERMINAL MARKER - DIRECT APPLIED	EACH	2	2	
39	SP	X7010216	TRAFFIC CONTROL AND PROTECTION, (SPECIAL)	L SUM	1	1	
40	RSP	Z0013798	CONSTRUCTION LAYOUT	L SUM	1	1	

SP=SPECIAL PROVISION RSP=RECURRING SPECIAL PROVISIONS SI=SPECIALTY ITEM BDE=BUREAU OF DESIGN AND ENVIRONMENT

FILE NAME =
Y:\3045\3045q001.dgn

USER NAME = bdecrone
PLOT SCALE = 1.000 / 1 IN.
PLOT DATE = 3/27/2012

DESIGNED -
DRAWN -
CHECKED -
DATE -

REVISED -
REVISED -
REVISED -
REVISED -

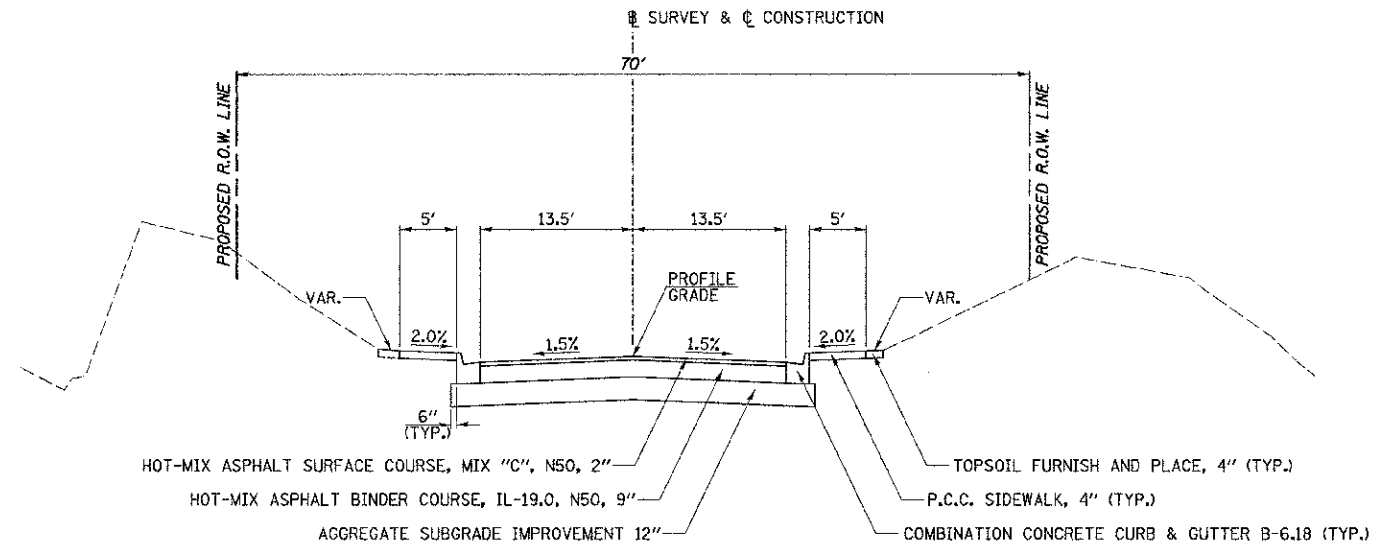
**STATE OF ILLINOIS
DEPARTMENT OF TRANSPORTATION**

**F.A.U. 6143 (BAZORE ST.)
SUMMARY OF QUANTITIES**

SCALE: N/A SHEET NO. 1 OF 1 SHEETS STA. N/A TO STA. N/A

F.A.U. RTE.	SECTION	COUNTY	TOTAL SHEETS	SHEET NO.
6143	11-00693-00-DR	LA SALLE	20	3
CONTRACT NO. 87522				

FED. ROAD DIST. NO. 7 (ILLINOIS) FED. AID PROJECT BRN-506R(016)



**PROPOSED TYPICAL SECTION
F.A.U. 6143 (BAZORE ST.)**

STA. 204+25 TO STA. 204+74.67
STA. 205+25.33 TO STA. 205+85

F.A.U. 6143 (BAZORE ST.) STRUCTURAL PAVEMENT DESIGN

STRUCTURAL DESIGN TRAFFIC (S.D.T.) YEAR 2012

PV = 4286 SU = 341 MU = 244

CLASS II ROAD
SUB-GRADE SUPPORT RATING: POOR
PERCENT OF S.D.T. IN DESIGN LANE: 50%

TRAFFIC FACTOR = 1.33

PAVEMENT STRUCTURE MATERIALS RECONSTRUCTION:

SURFACE COURSE TYPE: HOT-MIX ASPHALT SURFACE COURSE, MIX "C", N50, 2"
BASE COURSE TYPE: HOT-MIX ASPHALT BINDER COURSE, IL-19.0, N50, 9"
SUB-BASE TYPE: AGGREGATE SUBGRADE IMPROVEMENT 12"

LOCATION: F.A.U. 6143 (BAZORE ST.)			
	HOT-MIX ASPHALT BINDER	HOT-MIX ASPHALT LEVELING BINDER	HOT-MIX ASPHALT SURFACE
PG GRADE	PG64-22	PG64-22	PG64-22
DESIGN AIR VOIDS	4% @ N50	4% @ N50	4% @ N50
MIXTURE COMPOSITION	IL-19.0	IL-9.5	IL-9.5
FRICITION AGGREGATE	N/A	N/A	MIX "C"
DENSITY TEST METHOD	CORES	SATISFACTION OF ENGINEER	CORES

THE UNIT WEIGHT USED TO CALCULATE ALL HOT-MIX ASPHALT SURFACE MIXTURE IS 112 LBS/SQ YD/IN.

(SEE STRUCTURE PLANS FOR TYPICAL SECTION.)

**PROPOSED STRUCTURE TYPICAL SECTION
F.A.U. 6143 (BAZORE ST.)**

STA. 204+74.67 TO STA. 205+25.33

FILE NAME = v:\3845\3845r02.dgn	USER NAME = bdeorano	DESIGNED -	REVISED -	STATE OF ILLINOIS DEPARTMENT OF TRANSPORTATION	F.A.U. 6143 (BAZORE ST.) PROPOSED TYPICAL SECTIONS	F.A.U. RTE.	SECTION	COUNTY	TOTAL SHEETS	SHEET NO.	
		DRAWN -	REVISED -			6143	11-06693-00-DR	LA SALLE	20	5	
		CHECKED -	REVISED -			CONTRACT NO. 87522					
		DATE -	REVISED -			FED. ROAD DIST. NO. 7 [ILLINOIS] FED. AID PROJECT BRM 6066(016)					
				SCALE: N/A	SHEET NO. 2 OF 2 SHEETS	STA. N/A	TO STA. N/A				

TREE REMOVAL, ACRES				
STATION TO	STATION	SIDE	SQ FT	ACRE
204+38.1	TO 204+58.8	LT	86.4	0.01
205+25.3	TO 205+65.5	RT	461.0	0.01
205+25.8	TO 206+20.1	LT	560.7	0.01
TOTAL				0.03

PERIMETER EROSION BARRIER				
STATION TO	STATION	SIDE	LENGTH FOOT	
204+35.42	TO 204+72.19	RT	37	
204+35.42	TO 204+74.46	LT	39	
205+23.59	TO 205+66.50	RT	68	
205+29.76	TO 205+63.18	LT	33	
TOTAL				177
PERIMETER EROSION BARRIER IS SILT FENCE.				

PCC SIDEWALK 4 INCH			
LOCATION	STATION TO	STATION	SQ FT
	204+45.0	TO 204+74.7	149
	204+45.0	TO 204+74.7	149
	205+25.5	TO 205+65.0	198
	205+25.5	TO 205+65.0	198
TOTAL			694

EARTHWORK					
1	2	3	4	5	
STATION TO	STATION	EARTH EXCAVATION	EARTH EXCAVATION TO BE USED IN EMBANKMENT ADJUSTED FOR SHRINKAGE	EMBANKMENT	EARTHWORK BALANCE WASTE(+) OR SHORTAGE(-)
CU YD					
204+45.0	TO 204+74.7	44.0	33.0	4.5	28.5
205+25.3	TO 205+65.0	58.6	44.0	7.9	36.1
TOTAL		103	77	12	65
SHRINKAGE FACTORS: 0.25%					
EARTH EXCAVATION:					
COLUMN 1, 2, 3, & 4 - LOCATION AND QUANTITIES FROM CROSS SECTIONS.					
CUT = EARTH EXCAVATION AND FILL = EMBANKMENT					
COLUMN 3 = COLUMN 2 x (1 - EARTH EXCAVATION SHRINKAGE FACTOR)					
COLUMN 5 = COLUMN 3 - COLUMN 4					
PAY ITEM:					
COLUMN 2 IS		EARTH EXCAVATION = 103 CU YD			

PAVEMENT							
STATION TO	STATION	BITUMINOUS MATERIALS (PRIME COAT) (0.08 GAL/SY)	BITUMINOUS MATERIALS (PRIME COAT) (0.375 GAL/SY)	HOT-MIX ASPHALT BINDER COURSE, IL-19.0, N50	HOT-MIX ASPHALT SURFACE COURSE, MTX "C", N50	AGGREGATE SUBGRADE IMPROVEMENT, 12"	HOT-MIX ASPHALT SURFACE REMOVAL, 2"
		GALLON	GALLON	TON	TON	SQ YD	SQ YD
204+25.00	TO 204+74.67	7	33	46	10	92	67
205+25.33	TO 205+85.00	10	45	62	13	124	60
TOTAL		17	78	108	23	216	127

TOPSOIL, SEEDING, MULCH & NUTRIENTS								
STATION +/- TO	STATION +/-	SIDE	TOPSOIL FURNISH AND PLACE, 4"	SEEDING, CLASS 2A	MULCH, METHOD 2	NITROGEN FERTILIZER NUTRIENT	PHOSPHORUS FERTILIZER NUTRIENT	POTASSIUM FERTILIZER NUTRIENT
			SQ YD	ACRE	ACRE	POUND	POUND	POUND
203+78.0	TO 204+75.0	RT	48	0.01	0.01	0.9	0.9	0.9
204+24.0	TO 204+75.0	LT	75	0.02	0.02	1.8	1.8	1.8
205+26.0	TO 205+67.0	RT	46	0.01	0.01	0.9	0.9	0.9
205+26.0	TO 206+20.0	LT	73	0.02	0.02	1.8	1.8	1.8
TOTAL			242	0.06	0.06	6	6	6
FERTILIZER NUTRIENTS ARE FIGURED AT THE RATE OF APPLICATION OF 90 POUNDS/ACRE.								

PAVEMENT REMOVAL			
LOCATION	STATION TO	STATION	AREA SQ YD
	204+45.00	TO 204+74.67	103
	205+25.33	TO 205+65.00	139
TOTAL			242
WHERE IT IS REQUIRED TO REMOVE ANY OR ALL OF THE EXISTING SUB-BASE IT IS TO BE CONSIDERED INCLUDED IN THE COST OF THE PAVEMENT REMOVAL.			

SIDEWALK REMOVAL				
LOCATION	STATION +/- TO	STATION +/-	SIDE	AREA SQ FT
	204+45.0	TO 204+74.7	LT	124
	204+45.0	TO 204+74.7	RT	125
	205+25.3	TO 205+65.0	LT	179
	205+25.3	TO 205+65.0	RT	177
TOTAL				605

EROSION CONTROL BLANKET						
LOCATION	LENGTH	WIDTH	AREA			
STATION +/- TO	STATION +/-	SIDE	FOOT	FOOT	SQ YD	
203+78	TO 204+75	RT	97	VAR	48	
204+24	TO 204+75	LT	51	VAR	75	
205+26	TO 205+67	RT	41	VAR	56	
205+26	TO 206+20	LT	94	VAR	73	
TOTAL					252	

COMBINATION CONCRETE CURB AND GUTTER				
LOCATION	SIDE	TYPE B-6.1B FOOT	PROTECTIVE COAT SQ YD	
204+45.0	TO 204+74.7	RT	30.0	6.9
204+45.0	TO 204+74.7	LT	30.0	6.9
205+25.5	TO 205+65.0	RT	40.0	9.2
205+25.5	TO 205+65.0	LT	40.0	9.2
TOTAL			140	32
*SEE SPECIAL PROVISIONS AND SPECIAL DETAILS.				

STEEL PLATE BEAM GUARDRAIL				
LOCATION	TRAFFIC BARRIER TERMINAL TYPE 1 (SPECIAL) TANGENT	TRAFFIC BARRIER TERMINAL TYPE 6	TERMINAL MARKER DIRECT APPLIED	GUARDRAIL MARKERS, TYPE A
		EACH	EACH	EACH
SOUTHWEST SIDE	1	1	1	4
NORTHEAST SIDE	1	1	1	4
TOTAL		2	2	8

TEMPORARY EROSION CONTROL SEEDING								
STATION +/- TO	STATION +/-	SIDE	ACRES	POUNDS PER APPLICATION PER ACRE	NUMBER OF APPLICATIONS	TOTAL POUND	MULCH, METHOD 2 ACRE	
203+78.0	TO 204+75.0	RT	0.01	100.0	4	4	0.01	
204+24.0	TO 204+75.0	LT	0.02	100.0	4	8	0.02	
205+26.0	TO 205+67.0	RT	0.01	100.0	4	4	0.01	
205+26.0	TO 206+20.0	LT	0.02	100.0	4	8	0.02	
TOTAL						24	0.06	
MULCH METHOD 2 IS USED FOR TEMPORARY MULCHING, ONLY ONE APPLICATION OF MULCHING HAS BEEN INCLUDED. SEEDING CLASS 7 WILL BE USED FOR TEMPORARY EROSION CONTROL SEEDING.								

CURB REMOVAL			
LOCATION	STATION +/- TO	STATION +/-	FOOT
	204+45.0	TO 204+67.7	23
	204+45.0	TO 204+73.9	29
	205+28.1	TO 205+65.0	37
	205+28.6	TO 205+65.0	36
TOTAL			125

EPOXY PAVEMENT MARKING			
STATION TO	STATION	LINE	
		4" DOUBLE YELLOW	
		CENTERLINE	
		FOOT	
204+25.0	TO 205+85.0		320
TOTAL			320

PROP. CURVE BAZORE-1
 PI STA. = 203+38.65
 $\Delta = 39^\circ 41' 42''$ (RT)
 $D = 38^\circ 11' 50''$
 $R = 150.00'$
 $T = 54.14'$
 $L = 103.92'$
 $E = 9.47'$
 $\theta =$
 $T.R. =$
 $S.E. RUN =$
 P.C. STA. = 202+84.51
 P.T. STA. = 203+88.43

SECTION 11-00693-00-DR
 BEGINS
 STA. 204+25

PROPOSED TEMPORARY EASEMENT LINE
 PROPOSED COMBINATION CONCRETE
 CURB & GUTTER, TYPE B-6.18 (TYP.)
 STA. 205+65.00
 45.00' LT.
 STA. 205+65.00
 35.00' LT.
 PROPOSED TRAFFIC BARRIER TERMINAL
 TYPE 1 (SPECIAL) TANGENT &
 TRAFFIC BARRIER TERMINAL TYPE 6
 PROPOSED R.O.W. LINE

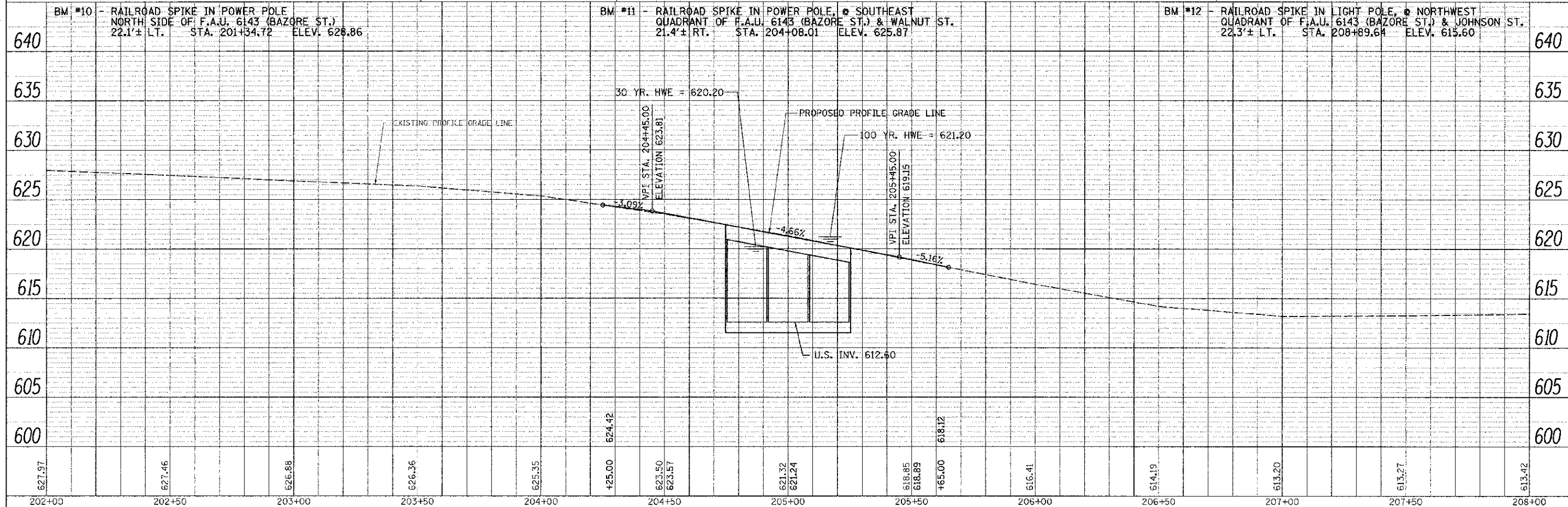
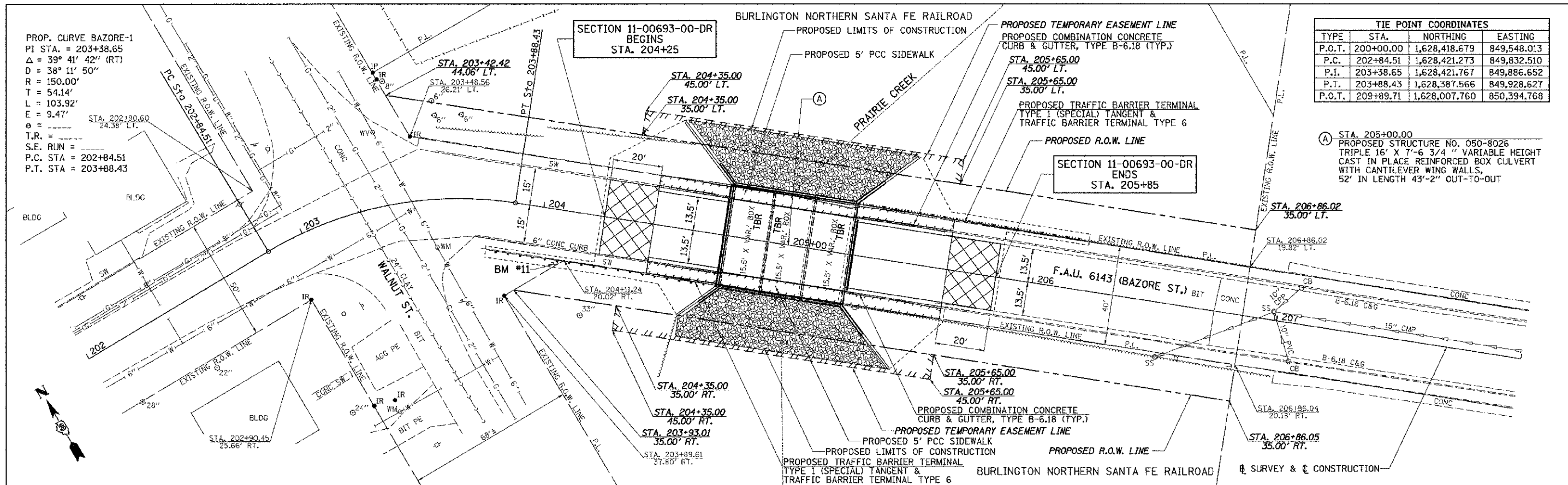
SECTION 11-00693-00-DR
 ENDS
 STA. 205+85

TIE POINT COORDINATES			
TYPE	STA.	NORTHING	EASTING
P.O.T.	200+00.00	1,628,418.679	849,548.013
P.C.	202+84.51	1,628,421.273	849,832.510
P.I.	203+38.65	1,628,421.767	849,886.652
P.T.	203+88.43	1,628,387.566	849,928.627
P.O.T.	209+89.71	1,628,007.760	850,394.768

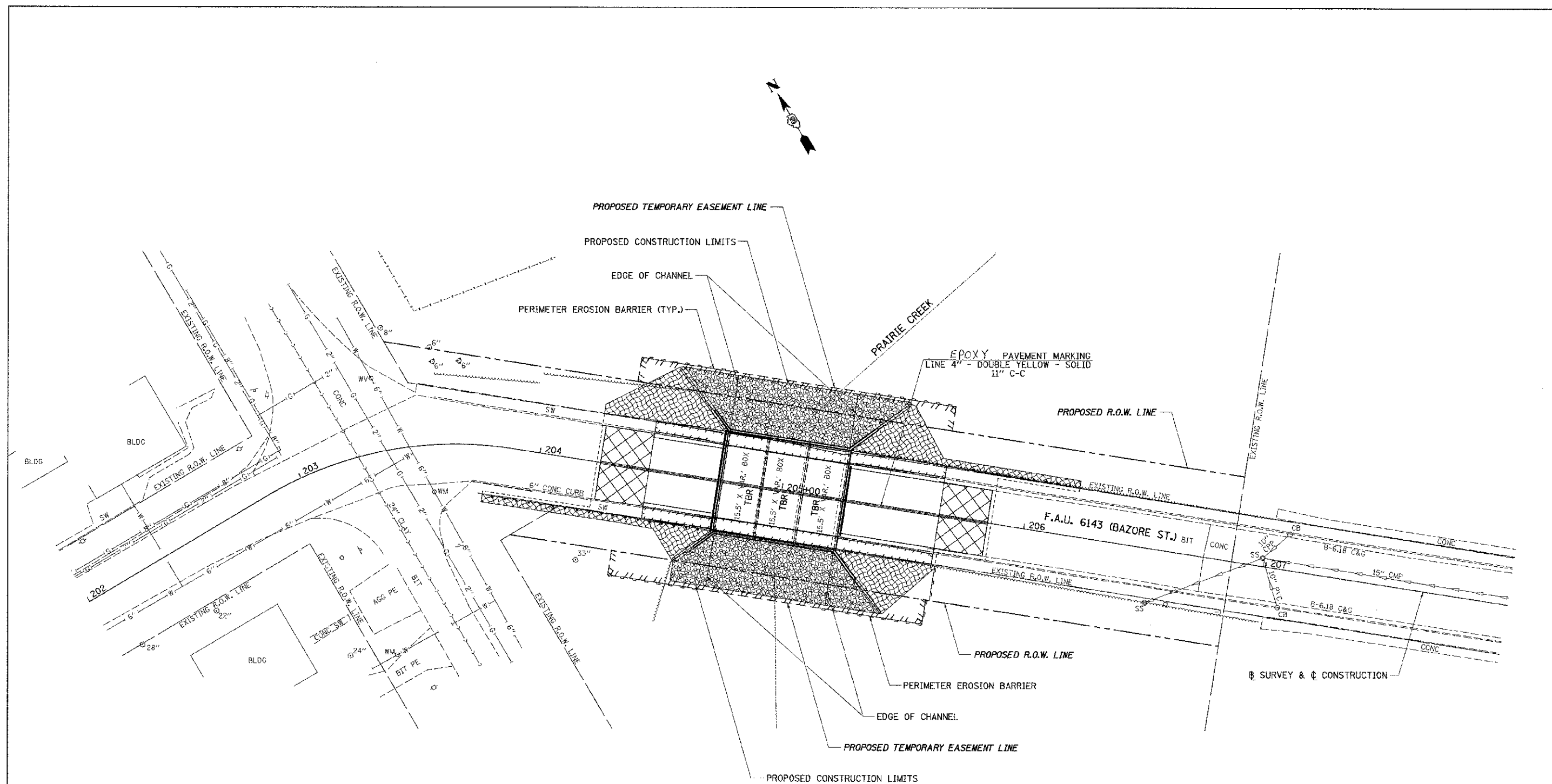
(A) STA. 205+00.00
 PROPOSED STRUCTURE NO. 050-8026
 TRIPLE 16' X 7'-6 3/4" VARIABLE HEIGHT
 CAST IN PLACE REINFORCED BOX CULVERT
 WITH CANTILEVER WING WALLS,
 52' IN LENGTH 43'-2" OUT-TO-OUT

PLAN	DATE	BY

PROFILE	DATE	BY



FILE NAME: V:\3045\3045p001.dgn	USER NAME: bdcrauno	DESIGNED -	REVISED -	STATE OF ILLINOIS DEPARTMENT OF TRANSPORTATION	F.A.U. 6143 (BAZORE ST.) PLAN & PROFILE	F.A.U. RT.:	SECTION:	COUNTY:	TOTAL SHEETS:	
		DRAWN -	REVISED -			6143	11-00693-00-DR	LA SALLE	20	7
		CHECKED -	REVISED -			CONTRACT NO. 87522				
		DATE:	REVISED -			FED. ROAD DIST. NO. 7 ILLINOIS FED. AID PROJECT BRM-5066(016)				

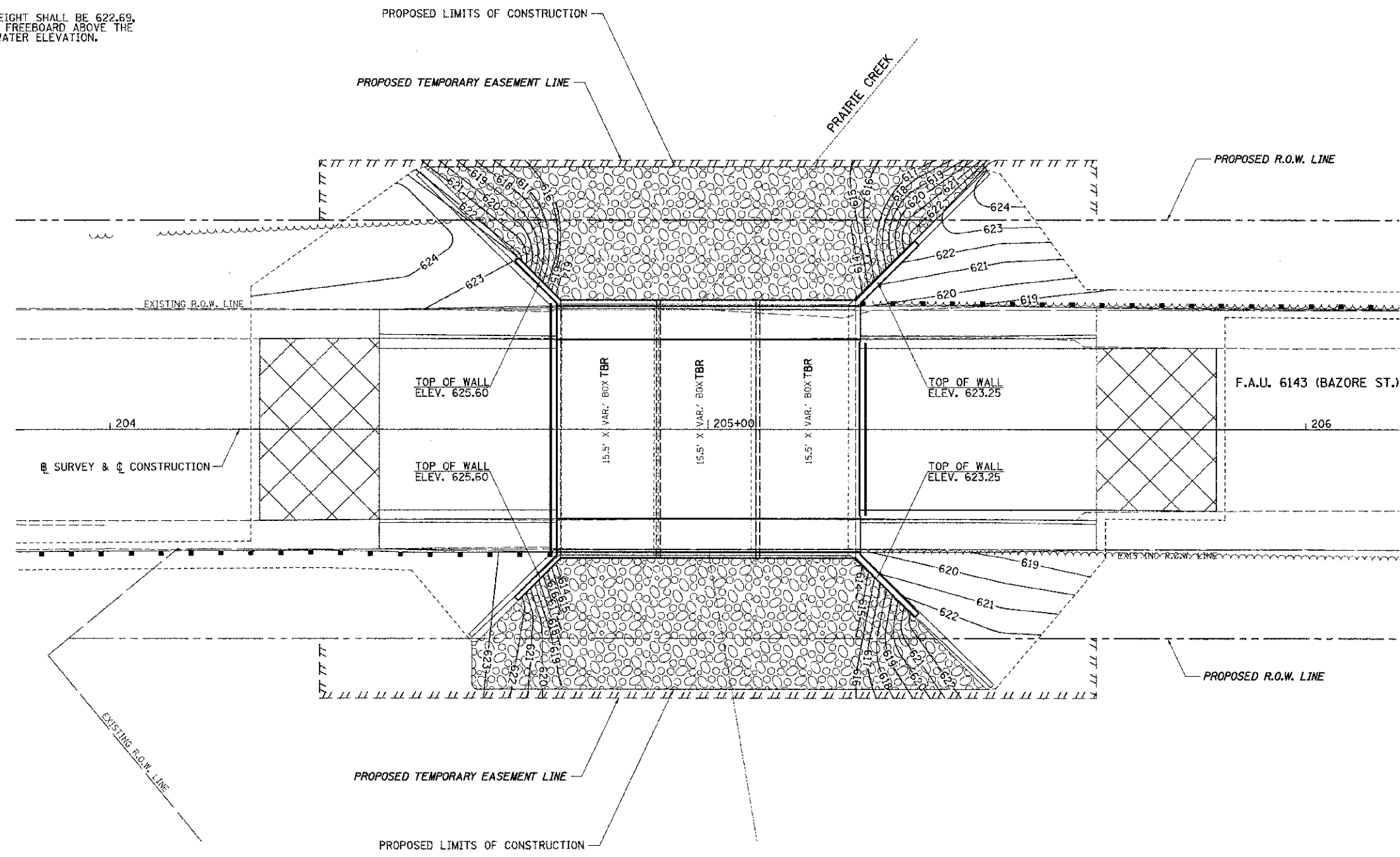


TEMPORARY EROSION CONTROL LEGEND

	EROSION CONTROL BLANKET
	PERIMETER EROSION BARRIER (SEE SCHEDULE FOR PLACEMENT LOCATION)
	STONE RIPRAP, CLASS A5

FILE NAME = v:\3845\3845e001.dgn	USER NAME = bdcprano	DESIGNED -	REVISED -	STATE OF ILLINOIS DEPARTMENT OF TRANSPORTATION	F.A.U. 6143 (BAZORE ST.) EROSION CONTROL & PAVEMENT MARKING	F.A.U. RTE.	SECTION	COUNTY	TOTAL SHEETS	SHEET NO.
	PLOT SCALE = 28.0000' / IN.	CHECKED -	REVISED -			6143	11-00693-00-DR	LA SALLE	20	8
	PLOT DATE = 3/21/2012	DATE -	REVISED -			SCALE: H=20 V=5 SHEET NO. 1 OF 1 SHEETS STA. 202+00 TO STA. 208+00		FED. ROAD DIST. NO. 7 (ILLINOIS) FED. AID PROJECT BRN-9066(016)		

NOTE:
 MINIMUM BERM HEIGHT SHALL BE 622.69,
 TO PROVIDE A 1' FREEBOARD ABOVE THE
 100 YEAR HIGH WATER ELEVATION.



FILE NAME = Y:\3045\3045cp01.dgn	USER NAME = hdec-nana	DESIGNED -	REVISED -
		DRAWN -	REVISED -
	PLOT SCALE = 10.0000 / IN.	CHECKED -	REVISED -
	PLOT DATE = 3/21/2012	DATE -	REVISED -

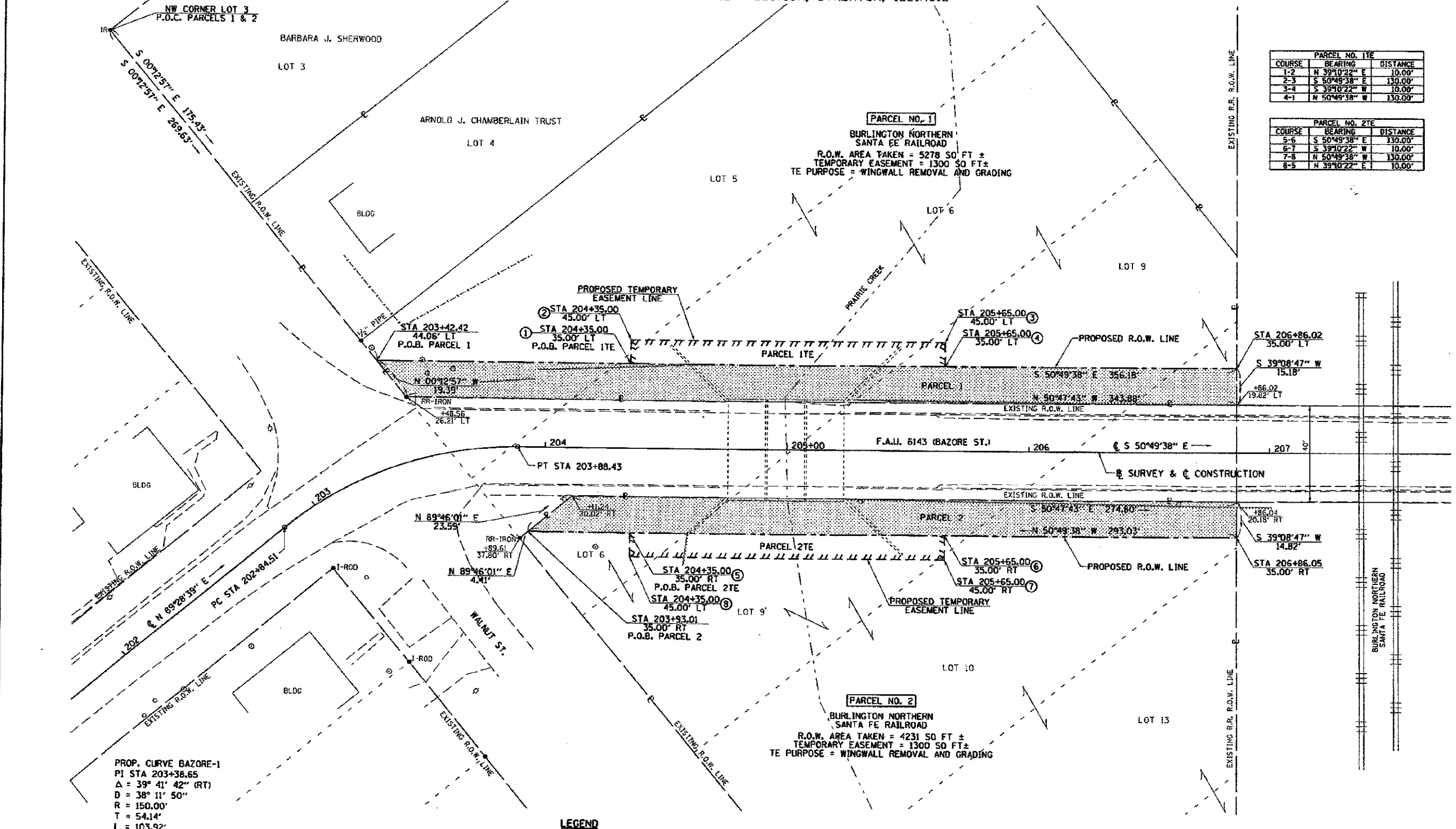
**STATE OF ILLINOIS
 DEPARTMENT OF TRANSPORTATION**

**F.A.U. 6143 (BAZORE ST.)
 GRADING PLAN**

SCALE: 1"=10' SHEET NO. 1 OF 1 SHEETS STA. 204+00 TO STA. 206+00

F.A.U. RTE.	SECTION	COUNTY	TOTAL SHEETS	SHEET NO.
6143	11-00693-00-DR	LA SALLE	20	9
CONTRACT NO. 87522				
FED. ROAD DIST. NO. 7 ILLINOIS FED. AID PROJECT BRM-5066(018)				

BLOCK 3, PRAIRIE CREEK ADDITION, STREATOR, ILLINOIS



PARCEL NO. 1			
COURSE	BEARING	DISTANCE	NOTE
1-2	N 39°10'22" E	10.00'	
2-3	S 50°49'38" E	130.00'	
3-4	S 39°10'22" W	10.00'	
4-1	N 50°49'38" W	130.00'	

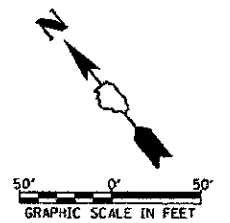
PARCEL NO. 2			
COURSE	BEARING	DISTANCE	NOTE
5-6	S 50°49'38" E	130.00'	
6-7	S 39°10'22" W	10.00'	
7-8	N 50°49'38" W	130.00'	
8-5	N 39°10'22" E	10.00'	

PROP. CURVE BAZORE-1
 PI STA 203+38.65
 Δ = 39° 41' 42" (RT)
 D = 38' 11" 50"
 R = 150.00'
 T = 54.14'
 L = 103.92'
 E = 9.47'
 PC STA 202+84.51
 PT STA 203+88.43

- LEGEND**
- LOT LINE
 - PROPERTY (DEED) LINE
 - CENTER LINE
 - - - EXISTING RIGHT OF WAY LINE
 - - - PROPOSED RIGHT OF WAY LINE
 - - - PROPOSED TEMPORARY EASEMENT LINE
 - ▨ NET ROW REQUIRED

NOTES:
 BEARINGS ARE BASED ON THE ILLINOIS STATE PLANE COORDINATE SYSTEM, NAD 83 (CORS 96) - EAST ZONE
 DISTANCES ARE IN GRID ENGLISH. TO CONVERT GRID TO GROUND, DIVIDE BY CONVERSION FACTOR
 CONVERSION FACTOR = 0.99997074

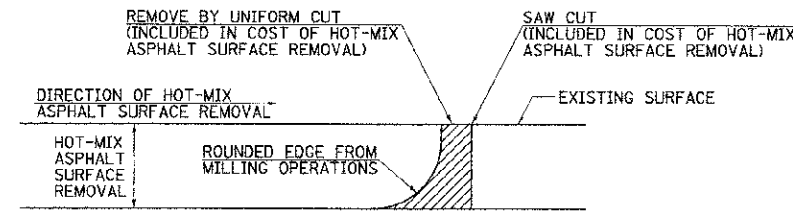
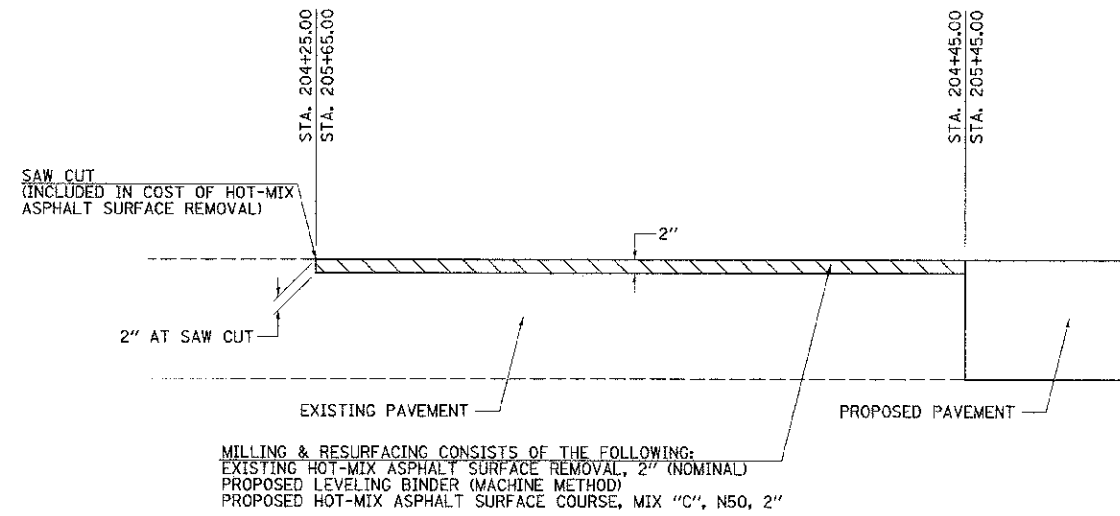
I, TIMOTHY C. QUIGG, A PROFESSIONAL LAND SURVEYOR IN THE STATE OF ILLINOIS DO HEREBY CERTIFY THAT THE PLAT AND DESCRIPTION HEREON IS A TRUE AND CORRECT REPRESENTATION OF THE SURVEY MADE UNDER MY SUPERVISION. THIS PROFESSIONAL SERVICE CONFORMS TO THE CURRENT ILLINOIS MINIMUM STANDARDS FOR A BOUNDARY SURVEY.
 TIMOTHY C. QUIGG
 PROFESSIONAL LAND SURVEYOR NO. 3063



LASALLE COUNTY HIGHWAY DEPT.
 RIGHT OF WAY PLAT
 ROUTE: F.A.U. 6143 (BAZORE STREET)
 SECTION: 11-00693-00-DR
 COUNTY: LASALLE
 JOB# C-93-056-12 PROJECT# BRM-5066 (016)
 SEC 24, T 34 N, R 3 E OF 3RD P.M.
 STA 202+00.00 TO STA 207+00.00
 DRAWN TO CHECKED
 SCALE: 1"=20' SHEET NO. 1 OF 1

Hutchison Engineering, Inc.
 1801 West Lafayette
 PO Box 809
 Jacksonville, Illinois 62651
 PHONE: (217)245-7184 FAX: (217)245-0488
 ILLINOIS PROFESSIONAL DESIGN
 FIRM NO. 184-000825

V:\3045R.O.W. from T.C.Q. 2-6-12\3045R001.DGN



NOTE: WHEN MILLING OPERATIONS PRODUCE A ROUNDED EDGE, THEN A SAW CUT SHALL BE USED TO MANUFACTURE A PERPENDICULAR EDGE AS SHOWN IN THE DETAIL. THE ENGINEER SHALL BE THE SOLE JUDGE CONCERNING THE USE OF THIS DETAIL.

HOT-MIX ASPHALT SURFACE REMOVAL DETAILS

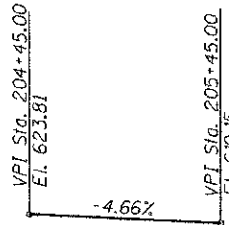
FILE NAME = v:\3049\3045h\021.dgn	USER NAME = bdcarens	DESIGNED -	REVISED -	STATE OF ILLINOIS DEPARTMENT OF TRANSPORTATION	F.A.U. 6143 (BAZORE ST.) SPECIAL DETAILS	F.A.U. RTE.	SECTION	COUNTY	TOTAL SHEETS	SHEET NO.	
	PLOT SCALE = 1/8" = 1' IN.	DRAWN -	REVISED -			6143	11-00693-00-DR	LA SALLE	20	11	
	PLOT DATE = 3/21/2012	CHECKED -	REVISED -			CONTRACT NO. 87522					
		DATE -	REVISED -			SCALE: N/A	SHEET NO. 1 OF 1 SHEETS	STA. N/A	TO STA. N/A	FED. ROAD DIST. NO. 7 ILLINOIS FED. AID PROJECT BRM-5066(018)	

B.M.: RR Spike in PP Sta. 201+35.22' Lt. Elev. 628.86
 B.M.: RR Spike in PP Sta. 204+08.21' Rt. Elev. 625.87
 B.M.: RR Spike in LP Sta. 208+90.22' Lt. Elev. 615.60

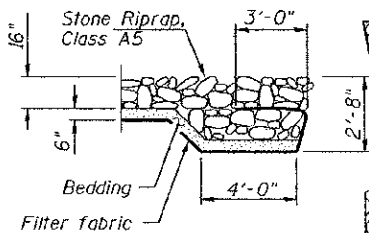
Existing Structure:
 Triple 15.5'x7' (varying) reinforced concrete box culvert.
 The structure is 42'-0" out to out, and is not skewed.
 Str. No. 050-8006

Salvage: None

Road to be closed to traffic during construction.



PROPOSED PROFILE GRADE



SECTION A-A

PRAIRIE CREEK
 BUILT 201 BY
 LASALLE COUNTY
 SEC. 11-00693-00-DR
 STATION 205+00.00
 STR. NO. 050-8026 LOADING HL-93

NAME PLATE

Locate Name Plate at South Headwall
 S.W. Corner of Culvert (See Std. 515001)

WATERWAY INFORMATION

Drainage Area = 6.04 Sq. Mi.		Low Grade Elev. = 613.20* @ Sta. 207+00.00							
Flood	Freq. Yr.	C.F.S.	Opening Sq. Ft.		Nat. Head - Ft.		Headwater E.I.		
			Exist.	Prop.	Exist.	Prop.	Exist.	Prop.	
Design	30	1467	320	343	620.25	0.29	0.28	620.54	620.53
Base	100	1940	322	351	621.25	0.51	0.44	621.76	621.69

Construction of this project complies with IDNR,
 Office of Water Resources State wide permit No. 12.

*Roadway protected by roadside berm.

DESIGN SPECIFICATIONS

2010 AASHTO & Interims

DESIGN STRESSES

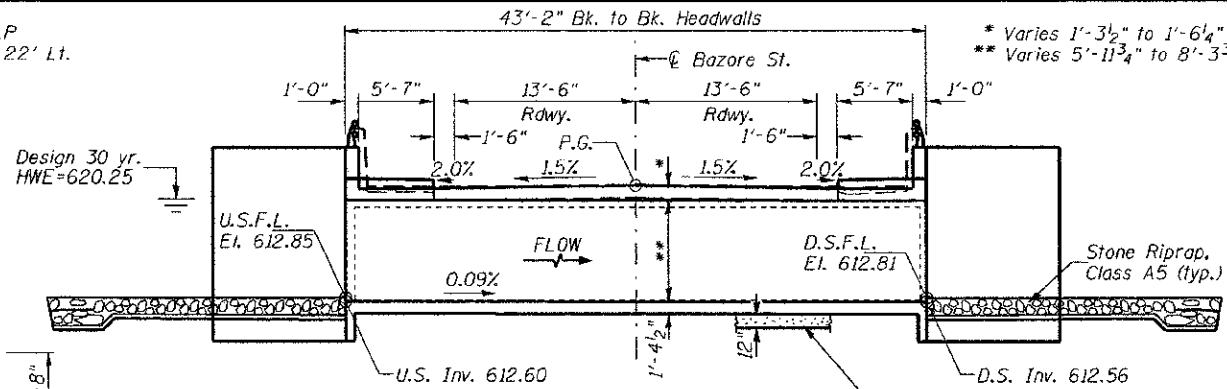
FIELD UNITS

$f_c = 3,500$ psi
 $f_y = 60,000$ psi (Reinforcement)

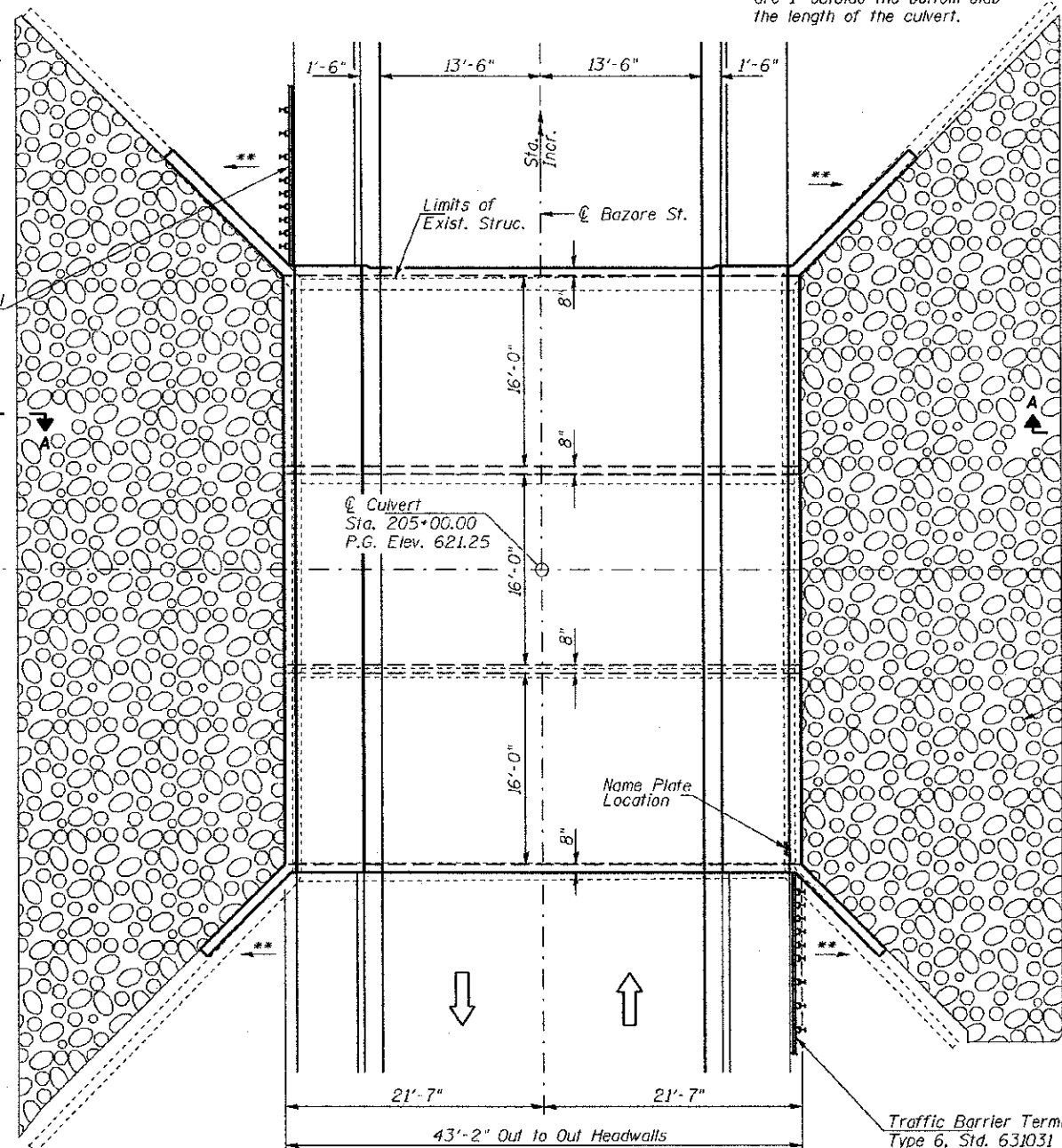
LOADING HL-93

Allow 50#/sq. ft. for future wearing surface.

DESIGNED	NPH
CHECKED	BAN
DRAWN	RMD
CHECKED	BAN



LONGITUDINAL SECTION



PLAN

GENERAL NOTES
 Reinforcement Bars shall conform to the requirements of ASTM A 706 Grade 60.
 For backfilling and embankment see Standard Specifications.
 Exposed concrete edges shall have a 3/4" chamfer unless otherwise noted.
 Precast culvert option will not be allowed.
 Layout of stone riprap may be varied in the field to suit ground conditions as directed by the Engineer.
 A distance of half the length of the wingwall, but not less than 6 feet of the barrel shall be poured monolithically with the wingwall.
 All excavation required for construction of the culvert in accordance with the Standard Specifications shall be included in the cost of Concrete Box Culverts.
 Reinforcement bars designated (E) shall be epoxy coated.
 Areas of excavation required for removal of the existing structure or construction of the new culvert shall be backfilled with P.G.E. See Special Provisions for more detailed information.
 Actual quantity, if any, of Removal & Disposal of Unsuitable Material shall be determined in the field by the Engineer.

TOTAL BILL OF MATERIAL

ITEM	UNIT	TOTAL
Concrete Box Culverts	CU YD	305.2
Reinforcement Bars, Epoxy Coated	POUND	51,710
① Removal of Existing Structures	EACH	1
Name Plates	EACH	1
Stone Riprap, Class A5	SQ YD	349
Filter Fabric	SQ YD	349
Aluminum Railing, Type L	FOOT	98
Porous Granular Embankment	CU YD	260
Protective Coat	SQ YD	275
Removal & Disposal of Unsuitable Material	CU YD	84

① See Special Provisions

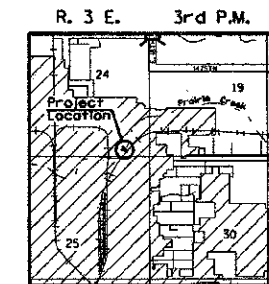
DESIGN SCOUR TABLE

Location	Upstream	Downstream
Design Scour Elevation	612.60	612.56

I certify that to the best of my knowledge, information and belief, this bridge design is structurally adequate for the design loading shown on the plans. The design is an economical one for the style of structure and complies with requirements of the current AASHTO Standard Specification for Highway Bridges.
 This design complies with all requirements of the current AASHTO Guide Specifications for Seismic Design of Highway Bridges.

James A. Moore 3/28/2012
 Illinois Structural No. 6527
 Expires 11/30/2012

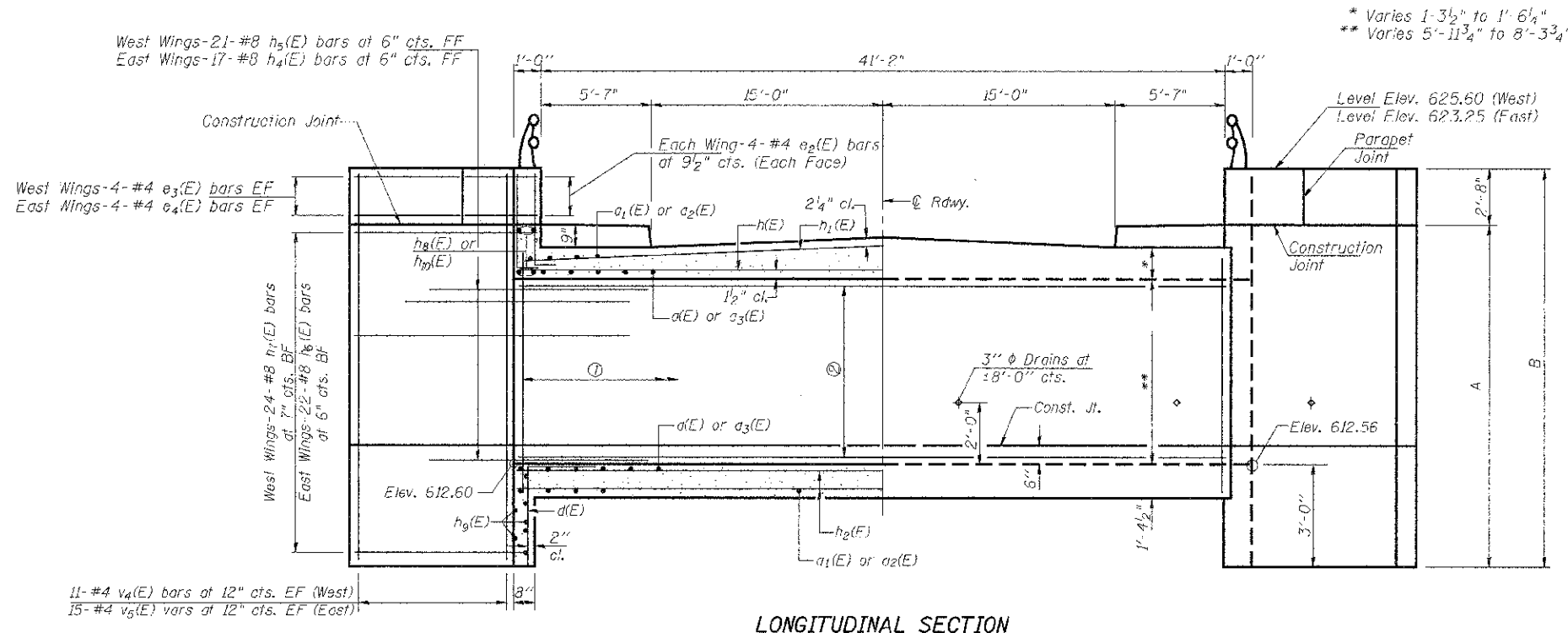
Stone Riprap, Class A5 (typ.)



LOCATION SKETCH

GENERAL PLAN & ELEVATION

SHEET NO. 1	F.A.U. RTE. 6143	SECTION 11-00693-00-DR	COUNTY LA SALLE	TOTAL SHEETS 20	SHEET NO. 12
6 SHEETS	S.N. 050-8026		CONTRACT NO. 87522		
FED. ROAD DIST. NO. 7 ILLINOIS		FED. AID PROJECT BRM-5066(016)			



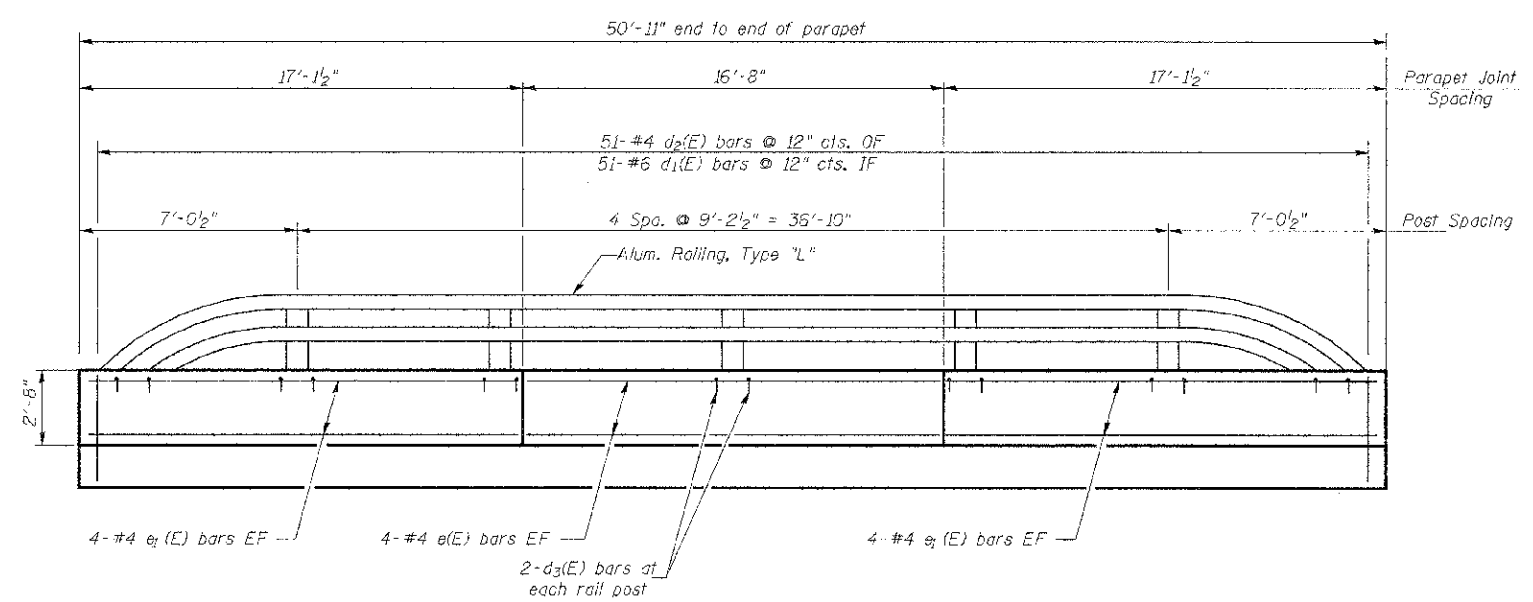
EF=Each Face
 FF=Front Face
 BF=Back Face
 IF=Inside Face
 OF=Outside Face

56-#4 v1(E) bars at 9" cts. East Exterior Wall
 56-#4 v1(E) bars at 9" cts. East Interior Wall
 56-#4 v2(F) bars at 9" cts. West Interior Wall
 56-#4 v3(E) bars at 9" cts. West Exterior Wall

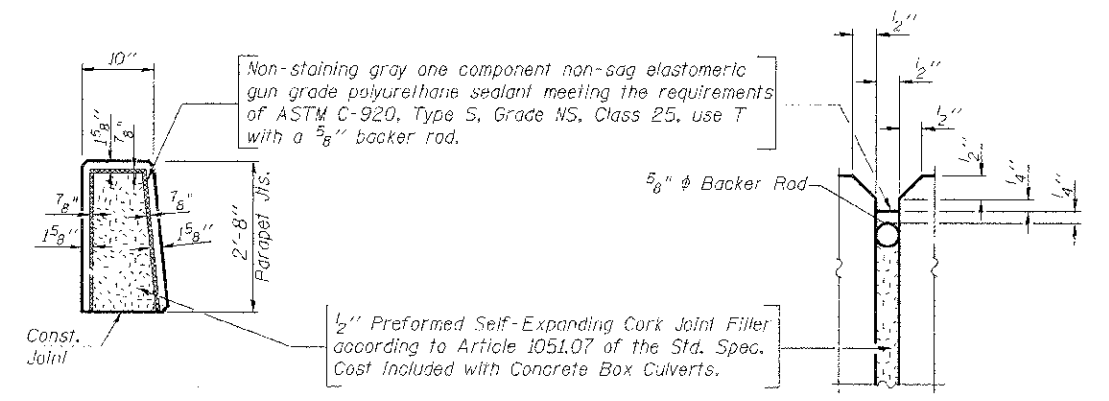
11x2-#5 h3(E) bars at 9" cts. West Exterior Wall
 10x2-#5 h3(E) bars at 9" cts. West Interior Wall
 9x2-#5 h3(E) bars at 10" cts. East Interior Wall
 8x2-#5 h3(E) bars at 10" cts. East Exterior Wall

	A	B
NW	13'-4"	16'-0"
NE	10'-11 ⁷ / ₈ "	13'-7 ⁷ / ₈ "
SW	13'-4 ¹ / ₂ "	16'-0 ¹ / ₂ "
SE	11'-0 ³ / ₈ "	13'-8 ³ / ₈ "

LONGITUDINAL SECTION



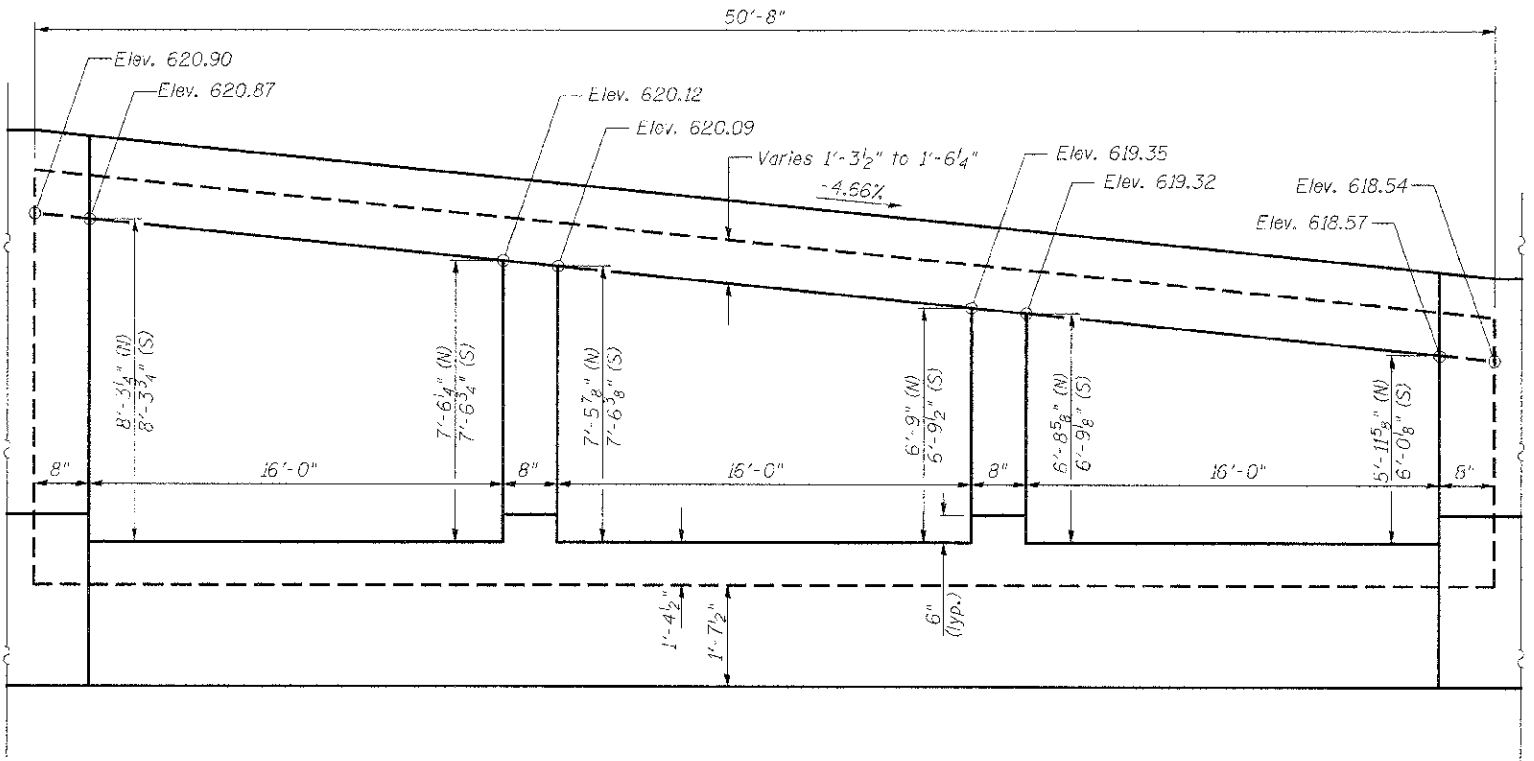
INSIDE ELEVATION OF PARAPET



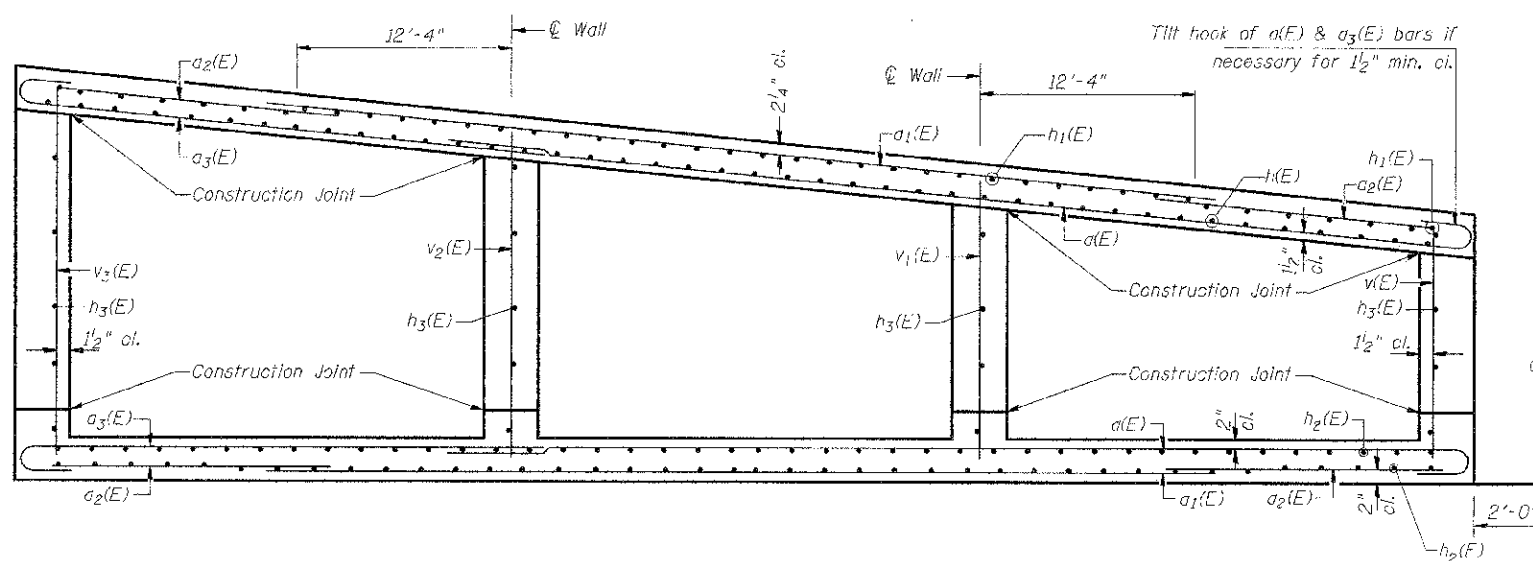
PARAPET JOINT DETAILS

CULVERT DETAILS

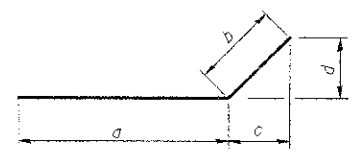
SHEET NO. 3	F.A.U. RTE.	SECTION	COUNTY	TOTAL SHEETS	SHEET NO.
	6143	11-00693-00-DR	LA SALLE	20	14
6 SHEETS	S.N. 050-8026		CONTRACT NO. 87522		
FED. ROAD DIST. NO. 7		ILLINOIS	FED. AID PROJECT BRM-5066(016)		



END ELEVATION
Showing Dimensions (Downstream Looking Upstream)

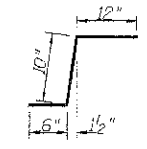


SECTION THRU BARREL
Showing Reinforcement (Downstream Looking Upstream)

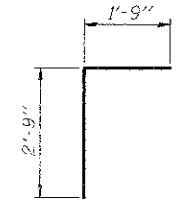


Bar	a	b	c	d
h ₄ (E)	5'-0"	9'-9"	6'-10 3/4"	6'-10 3/4"
h ₅ (E)	5'-0"	13'-9"	9'-8 5/8"	9'-8 5/8"
h ₆ (E)	14'-0"	3'-0"	2'-1 1/2"	2'-1 1/2"
h ₇ (E)	10'-0"	3'-0"	2'-1 1/2"	2'-1 1/2"

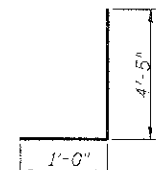
BARS h₄(E), h₅(E), h₆(E), & h₇(E)



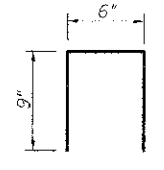
BAR a(E)



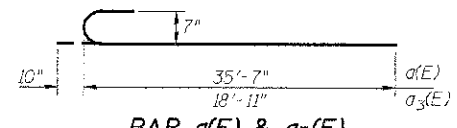
BAR d(E)



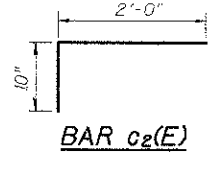
BAR d₁(E) & d₂(E)



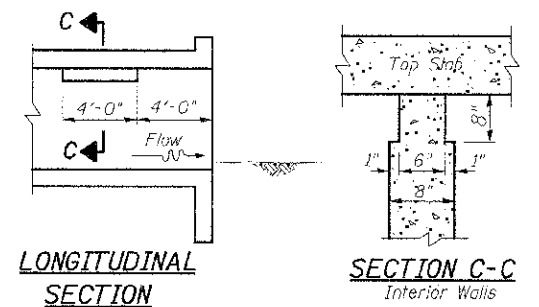
BAR d₃(E)



BAR a(E) & a₃(E)



BAR c₂(E)



LONGITUDINAL SECTION

SECTION C-C
Interior Walls

Note: Notch by rough-finished board attached to and removed with formwork, each interior wall. (Do not chamfer)

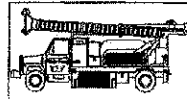
PHOEBE NESTING SITE DETAIL
(Downstream End Only - Cost Included with Concrete Box Culverts)

BILL OF MATERIAL

Bar	No.	Size	Length	Shape
a(E)	150	#7	36'-5"	C
a ₁ (E)	160	#6	41'-4"	—
a ₂ (E)	160	#4	7'-2"	—
a ₃ (E)	150	#7	19'-9"	C
b(E)	25	#5	26'-7"	—
c(E)	102	#5	2'-4"	L
c ₁ (E)	102	#5	5'-3"	—
c ₂ (E)	102	#5	2'-10"	L
d(E)	100	#4	4'-8"	L
d ₁ (E)	102	#6	5'-5"	L
d ₂ (E)	102	#4	5'-5"	L
d ₃ (E)	28	#4	2'-0"	U
e(E)	16	#4	16'-5"	—
e ₁ (E)	32	#4	16'-10"	—
e ₂ (E)	32	#4	2'-6"	—
e ₃ (E)	16	#4	8'-0"	—
e ₄ (E)	16	#4	12'-0"	—
f(E)	88	#5	22'-9"	—
h ₁ (E)	96	#4	22'-6"	—
h ₂ (E)	192	#4	22'-6"	—
h ₃ (E)	76	#5	22'-9"	—
h ₄ (E)	34	#8	14'-9"	—
h ₅ (E)	42	#8	18'-9"	—
h ₆ (E)	44	#8	17'-0"	—
h ₇ (E)	48	#8	13'-0"	—
h ₈ (E)	12	#7	31'-4"	—
h ₉ (E)	12	#6	26'-9"	—
h ₁₀ (E)	12	#7	23'-0"	—
v(E)	58	#4	8'-3"	—
v ₁ (E)	56	#4	9'-0"	—
v ₂ (E)	56	#4	9'-9"	—
v ₃ (E)	58	#4	10'-7"	—
v ₄ (E)	44	#4	15'-7"	—
v ₅ (E)	60	#4	13'-4"	—
Concrete Box Culverts	CU YD		305.2	
Reinforcement Bars, Epoxy Coated	POUND		51,710	

CULVERT DETAILS

SHEET NO. 4 6 SHEETS	F.A.U. RTE.	SECTION	COUNTY	TOTAL SHEETS	SHEET NO.
	6143	11-00693-00-DR	LA SALLE	20	15
S.N. 050-8026			CONTRACT NO. 87522		
FED. ROAD DIST. NO. 7		ILLINOIS	FED. AID PROJECT BRM-5066(016)		



Midwest Testing Services, Inc.
3705 Progress Blvd.
Peru, IL 61354

BORING LOG

Phone: 815-223-6696
Fax: 815-223-6659
e-mail: mts37@comcast.net

Sheet 1 of 2

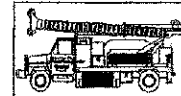
Client: Hutchison Engineering, Inc.
Project Name: Bazore St. Over Prairie Creek S.N. 050-8006
Project Site: Streator, Illinois

Boring No. B-1
Surface Elev. 622.90
Auger Depth 31' Rotary Depth NA
Start Date 10/12/11 Finish Date 11/12/11

Location: 21' Lt of centerline station 204+64

(DEPTH) *ELEV.	DESCRIPTION OF MATERIALS	Graphic Log	Depth in feet	SAMPLES						DRILLED BY	
				Sample No.	Sample Type	Qu (TSF)	N Value (Blows)	Bulge / Shear	Moisture (%)	Dry Density (PCF)	REMARKS
622.90											Randy Safranski Diedrich D-120
621.90	Stiff Black And Brown Clay (Fill)		1								
620.90			2								
619.90			3	1	SS	1.2	7	S	19		
618.90	Medium Brown And Black Clay (Fill)		4								
617.90			5								
616.90			6	2	SS	0.6	4	B	22		
615.90	Medium Brown Clay		7								
614.90			8	3	SS	0.8	5	B	22		
613.90			9								
612.90	Stiff Brown Clay		10								
611.90			11	4	SS	1.0	9	B	21		
610.90	Medium Brownish Gray Silt		12								
609.90			13	5	SS	---	18	---	18		
608.90	Very Stiff Gray Silty Clay Loam Till		14								
607.90			15								
606.90			16	6	SS	3.2	18	S	14		
605.90			17								
604.90			18	7	SS	2.5	18	S	15		
603.90			19								
602.90			20	8	SS	2.8	19	S	14		

Groundwater Data: No groundwater encountered at time of subsurface investigation.
Comments:



Midwest Testing Services, Inc.
3705 Progress Blvd.
Peru, IL 61354

BORING LOG

Phone: 815-223-6696
Fax: 815-223-6659
e-mail: mts37@comcast.net

Sheet 2 of 2

Client: Hutchison Engineering, Inc.
Project Name: Bazore St. Over Prairie Creek S.N. 050-8006
Project Site: Streator, Illinois

Boring No. B-1
Surface Elev. 622.90
Auger Depth 31' Rotary Depth NA
Start Date 10/12/11 Finish Date 11/12/11

Location: 21' Lt of centerline station 204+64

(DEPTH) *ELEV.	DESCRIPTION OF MATERIALS	Graphic Log	Depth in feet	SAMPLES						DRILLED BY	
				Sample No.	Sample Type	Qu (TSF)	N Value (Blows)	Bulge / Shear	Moisture (%)	Dry Density (PCF)	REMARKS
601.90											Randy Safranski Diedrich D-120
600.90			22								
599.90			23	9	SS	3.0	19	S	14		
598.90	Very Stiff Gray Silty Clay Loam Till		24								
597.90			25	10	SS	3.2	18	S	15		
596.90			26								
595.90			27								
594.90			28								
593.90			29								
592.90			30								
591.90			31	11	SS	2.6	16	S	16		
590.90	Bottom of Boring		32								
589.90			33								
588.90			34								
587.90			35								
586.90			36								
585.90			37								
584.90			38								
583.90			39								
582.90			40								
581.90			41								

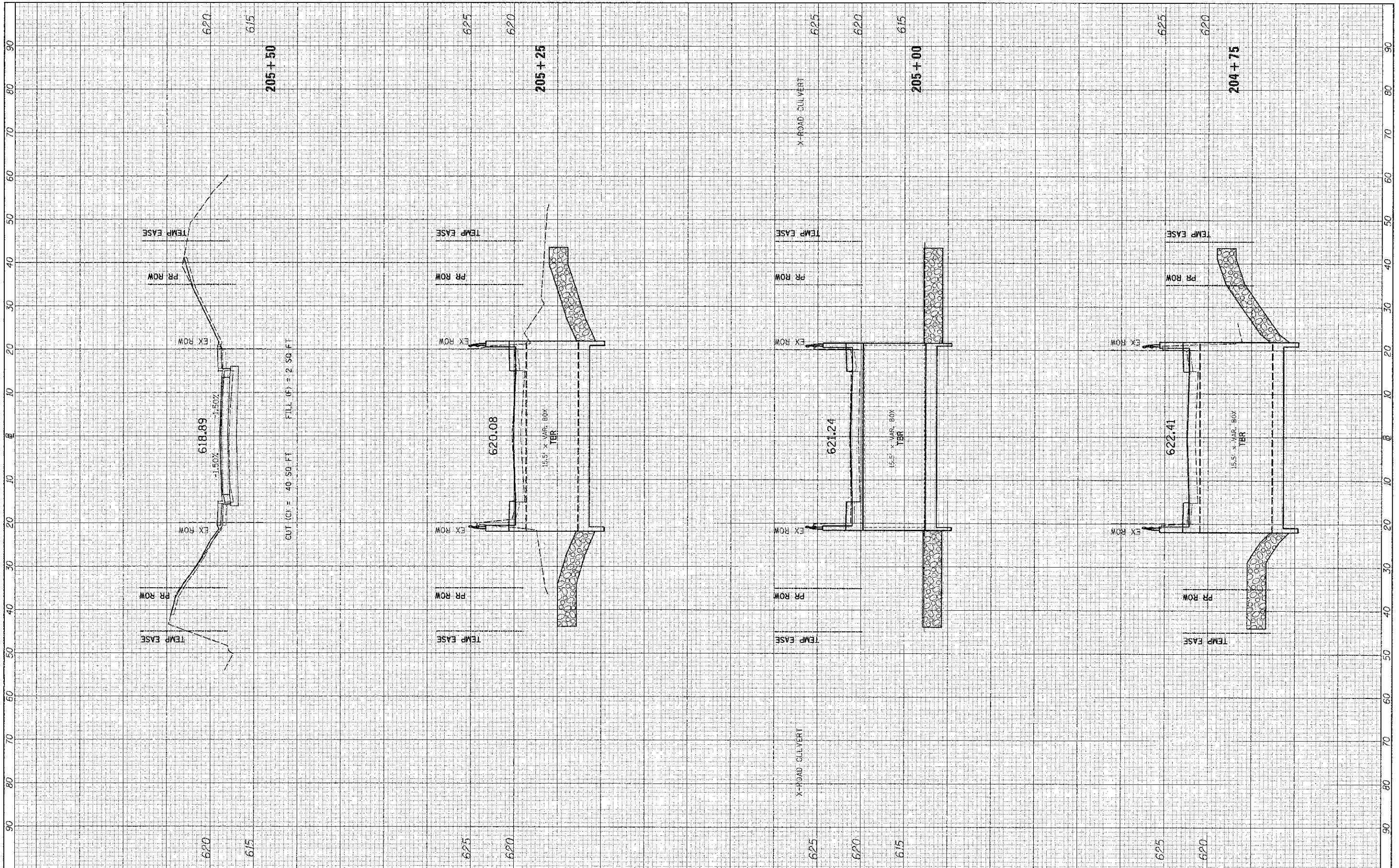
Groundwater Data: No groundwater encountered at time of subsurface investigation.
Comments:

SOIL BORING LOGS

SHEET NO. 6	F.A.U. RTE. 6143	SECTION 11-00693-00-DR	COUNTY LA SALLE	TOTAL SHEETS 20	SHEET NO. 17
6 SHEETS	S.N. 050-8026		CONTRACT NO. 87522		
FED. ROAD DIST. NO. 7 ILLINOIS		FED. AID PROJECT BRM-5066(016)			

FINAL SURVEY	SURVEYED	BY	DATE
NOTE BOOK	PLOTTED		
NO.	DATE		
	AREAS CHECKED		

ORIGINAL SURVEY	SURVEYED	BY	DATE
NOTE BOOK	PLOTTED		
NO.	DATE		
	AREAS CHECKED		



FILE NAME = v:\3045\3045xhsts.dgn

USER NAME = bdcroano
 PLDT SCALE = 1/8" = 1' / IN.
 PLDT DATE = 3/21/2012

DESIGNED -
 DRAWN -
 CHECKED -
 DATE -

REVISED -
 REVISED -
 REVISED -
 REVISED -

STATE OF ILLINOIS
 DEPARTMENT OF TRANSPORTATION

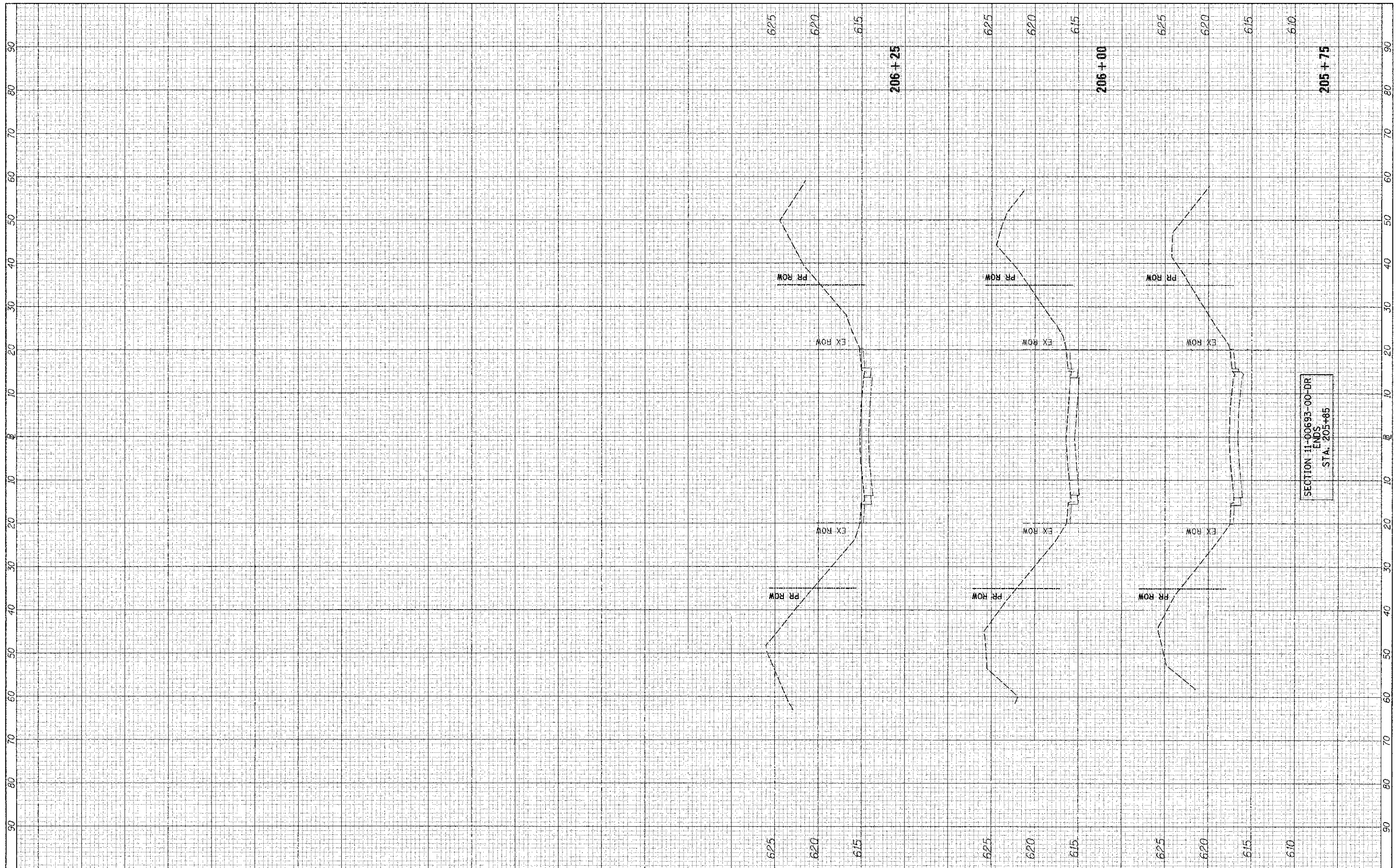
F.A.U. 6143 (BAZORE ST.) CROSS SECTIONS

SCALE: H=10 V=5 SHEET NO. 2 OF 3 SHEETS STA. 204+75 TO STA. 205+50

F.A.U. RTE.	SECTION	COUNTY	TOTAL SHEETS	SHEET NO.
6143	11-00693-00-DR	LA SALLE	20	19
CONTRACT NO. 87522				
FED. ROAD DIST. NO. 7 ILLINOIS FED. AID PROJECT BRM-5056(016)				

FINAL SURVEY	SURVEYED	DATE
SURVEY	PLOTTED	
NOTE BOOK	TEMPLATE	
NO.	AREAS CHECKED	

ORIGINAL SURVEY	SURVEYED	DATE
SURVEY	PLOTTED	
NOTE BOOK	TEMPLATE	
NO.	AREAS CHECKED	



PLT. P. NAME =
v:\3045\3045\3045\3045.dgn

USER NAME = bdsone
PLOT SCALE = 1/8" = 10'-00"
PLOT DATE = 3/21/2012

DESIGNED -	REVISED -
DRAWN -	REVISED -
CHECKED -	REVISED -
DATE -	REVISED -

**STATE OF ILLINOIS
DEPARTMENT OF TRANSPORTATION**

F.A.U. 6143 (BAZORE ST.) CROSS SECTIONS

SCALE: H=10 V=5 SHEET NO. 3 OF 3 SHEETS STA. 205+75 TO STA. 206+25

F.A.U. RTE.	SECTION	COUNTY	TOTAL SHEETS	SHEET NO.
6143	11-00693-00-DR	LA SALLE	20	20
CONTRACT NO. 87522			FED. ROAD DIST. NO. 7 ILLINOIS FED. AID PROJECT BRM-9066(016)	