

FOR INDEX OF SHEETS, SEE SHEET NO. 2

LIST OF STANDARDS

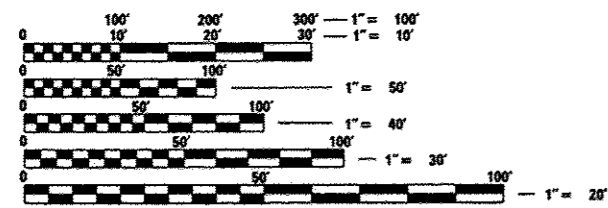
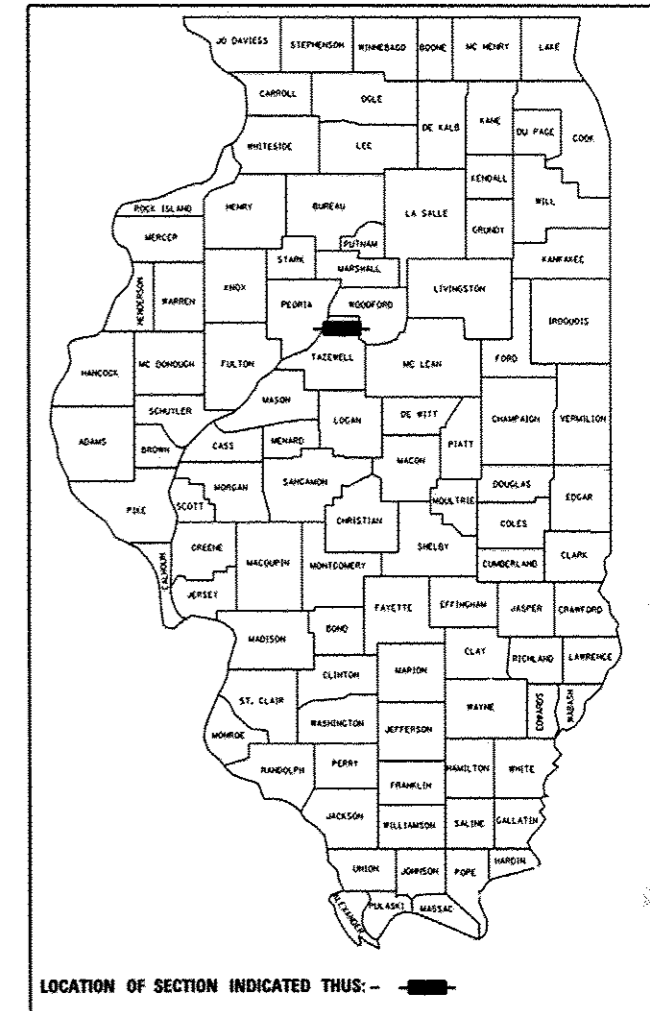
NO.	DESCRIPTION
000001-06	STANDARD SYMBOLS, ABBREVIATIONS, AND PATTERNS
001001-02	AREAS OF REINFORCEMENT BARS
001006	DECIMAL OF AN INCH AND OF A FOOT
280001-07	TEMPORARY EROSION CONTROL SYSTEMS
424001-07	PERPENDICULAR CURB RAMPS FOR SIDEWALKS
542001-03	CONCRETE END SECTIONS FOR PIPE CULVERTS 15" THRU 84" DIA.
542301-03	PRECAST REINFORCED CONCRETE FLARED END SECTION
602301-03	INLET - TYPE A
602401-03	MANHOLE, TYPE A
602601-02	PRECAST REINFORCED CONCRETE FLAT SLAB TOP
602701-02	MANHOLE STEPS
604001-03	FRAME AND LIDS, TYPE 1
606001-05	CONCRETE CURB TYPE B AND COMBINATION CONCRETE CURB AND GUTTER
630001-10	STEEL PLATE BEAM GUARDRAIL
630301-06	SHOULDER WIDENING FOR TYPE 1 (SPECIAL) GUARDRAIL TERMINALS
635006-03	REFLECTOR AND TERMINAL MARKER PLACEMENT
635011-02	REFLECTOR MARKER AND MOUNTING DETAILS
666001-01	RIGHT OF WAY MARKERS
667101-02	PERMANENT SURVEY MARKERS
701301-04	LANE CLOSURE, 2L, 2W, SHORT TIME OPERATIONS
701311-03	LANE CLOSURE 2L, 2W MOVING OPERATIONS-DAY ONLY
701501-06	URBAN LANE CLOSURE, 2L, 2W, UNDIVIDED
701901-02	TRAFFIC CONTROL DEVICES
780001-03	TYPICAL PAVEMENT MARKINGS
781001-03	TYPICAL APPLICATIONS RAISED REFLECTIVE PAVEMENT MARKERS
BLR 21-9	TYPICAL APPLICATION OF TRAFFIC CONTROL DEVICES FOR CONSTRUCTION ON RURAL LOCAL HIGHWAYS
BLR 22-7	TYPICAL APPLICATION OF TRAFFIC CONTROL DEVICES FOR CONSTRUCTION ON RURAL LOCAL HIGHWAYS (TWO-LANE TWO WAY RURAL TRAFFIC) (ROAD CLOSED TO THRU TRAFFIC)

# STATE OF ILLINOIS DEPARTMENT OF TRANSPORTATION PLANS FOR PROPOSED LOCAL AGENCY IMPROVEMENT

**FAU ROUTE 6745 (CENTENNIAL DRIVE)  
SECTION 07-00069-00-WR  
PROJECT M-5093(130)  
CITY OF EAST PEORIA &  
WASHINGTON TOWNSHIP  
TAZEWELL COUNTY**

C-94-046-08

F.A.U. RTE.	SECTION	COUNTY	TOTAL SHEETS	SHEET NO.
6745	07-00069-00-WR	TAZEWELL	98	1
		ILLINOIS	CONTRACT NO. 89492	

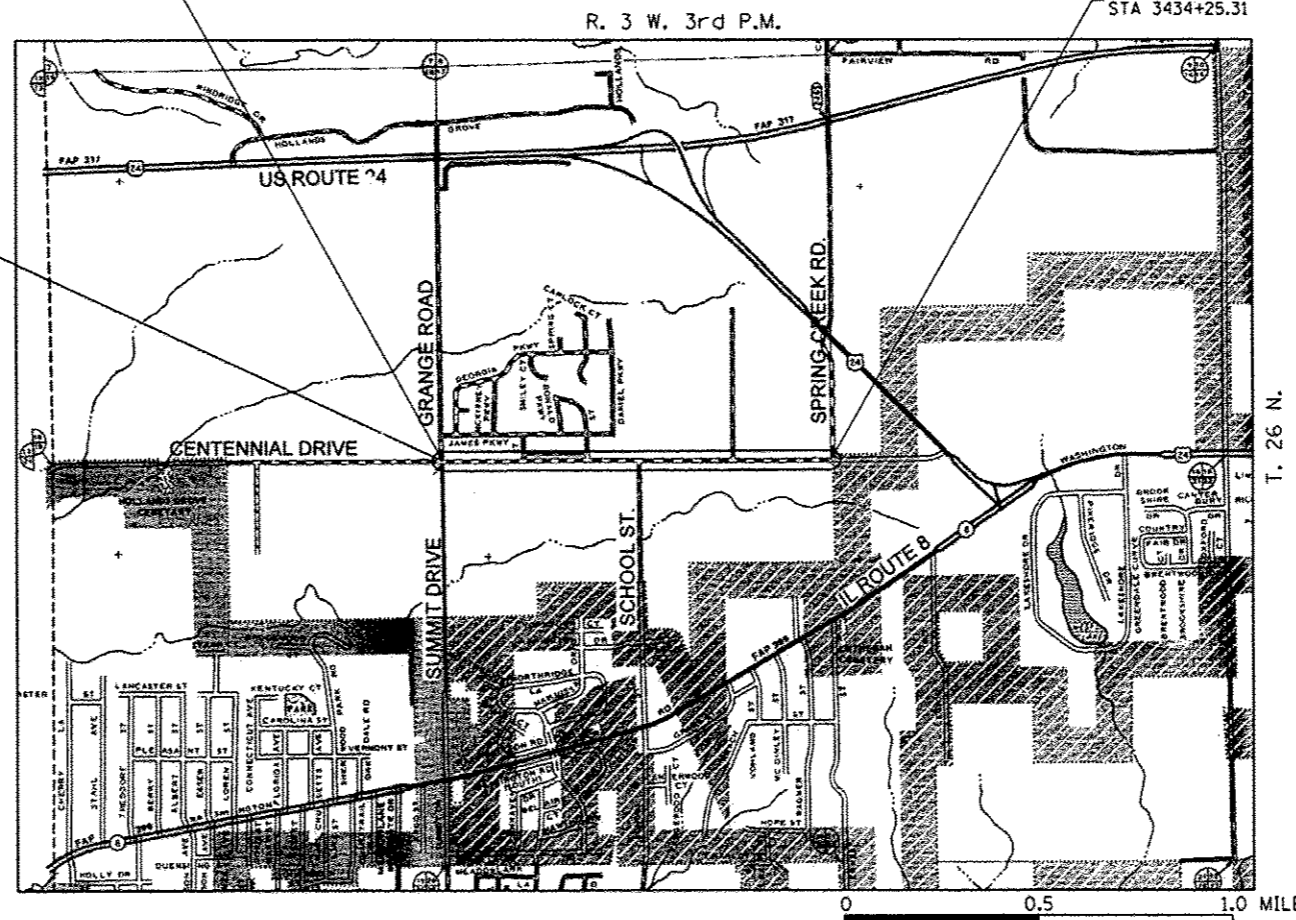


FULL SIZE PLANS HAVE BEEN PREPARED USING STANDARD ENGINEERING SCALES. REDUCED SIZED PLANS WILL NOT CONFORM TO STANDARD SCALES. IN MAKING MEASUREMENTS ON REDUCED PLANS, THE ABOVE SCALES MAY BE USED.

J.U.L.I.E.  
JOINT UTILITY LOCATION INFORMATION FOR EXCAVATION  
1-800-892-0123  
OR 811

IMPROVEMENT BEGINS  
STA. 3380+88.55

IMPROVEMENT ENDS  
STA 3434+25.31



RECONSTRUCTION OF PAVEMENT FOR 1.0 MILE ON CENTENNIAL DRIVE IN EAST PEORIA FROM GRANGE RD. TO SPRING CREEK RD. CONSTRUCTION WILL INCLUDE HMA PAVEMENT, CURB AND GUTTER, STORM SEWER, AND GRADED AREA FUTURE PATH.

**MAURER-STUTZ**  
ENGINEERS SURVEYORS

3116 DRIES LN STE 100  
PEORIA, ILLINOIS 61604  
PH. (309) 693-7616  
FAX (309) 693-7616  
PROFESSIONAL DESIGN FIRM #184-008764



RICK J. ANDERSON  
IL. REG. NO. 062-044812  
EXPIRATION DATE 11/30/2013

GROSS LENGTH = 5346.76 FT. = 1.01 MILE  
NET LENGTH = 5346.76 FT. = 1.01 MILE  
2033 A.D.T. - 4000, 1.0% M.U.  
HIGHWAY CLASS: MINOR ARTERIAL  
DESIGN SPEED: 45 M.P.H.  
POSTED SPEED: 40 M.P.H.  
DESIGN GUIDELINES: BLR - URBAN  
VARIANCES: NONE  
COMMITMENTS: SEE SHEET 2

CONTRACT NO. 89492

APPROVED Oct 16 2012  
John J. Anderson  
LOCAL AGENCY - TAZEWELL COUNTY  
HIGHWAY DEPARTMENT

APPROVED Oct 16 2012  
David W. Weaver  
LOCAL AGENCY - WASHINGTON  
TOWNSHIP ROAD DISTRICT

APPROVED 10-16 2012  
Steve Ferguson  
LOCAL AGENCY - CITY OF EAST PEORIA

PASSED 10/30 2012  
[Signature]  
DISTRICT ENGINEER OF  
LOCAL ROADS AND STREETS

RELEASING FOR  
BID BASED ON  
LIMITED REVIEW  
11-2 2012  
Joseph C. Connor  
DEPUTY DIRECTOR OF HIGHWAYS,  
REGION THREE ENGINEER

STATE OF ILLINOIS  
DEPARTMENT OF TRANSPORTATION