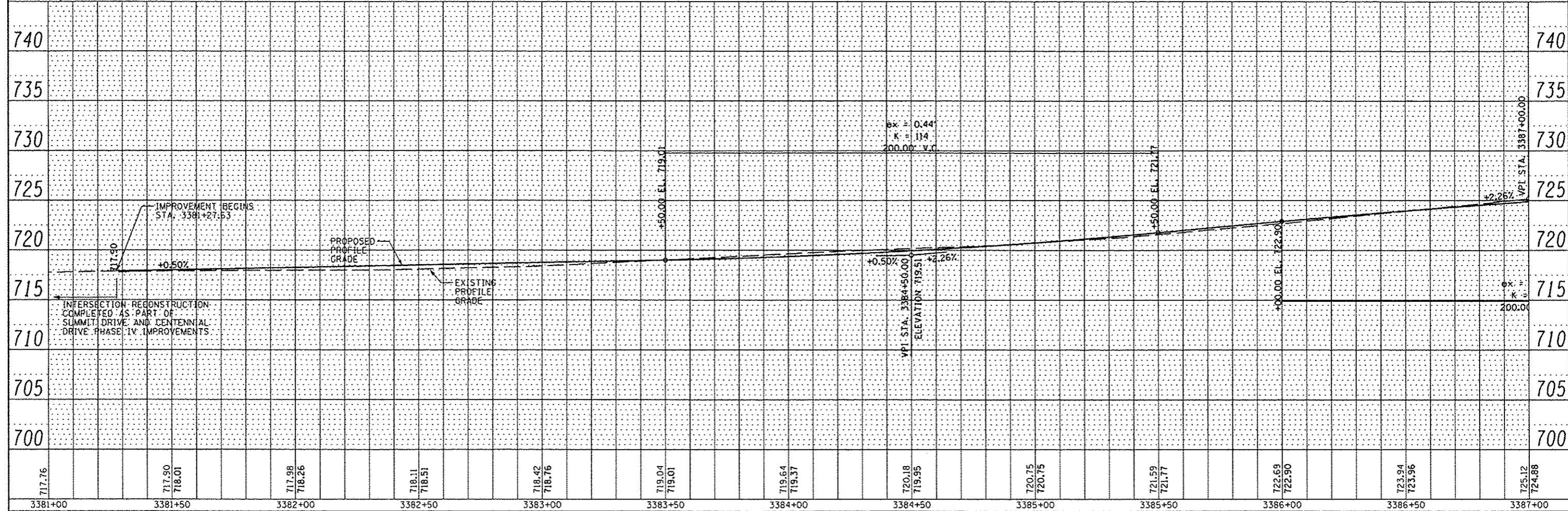
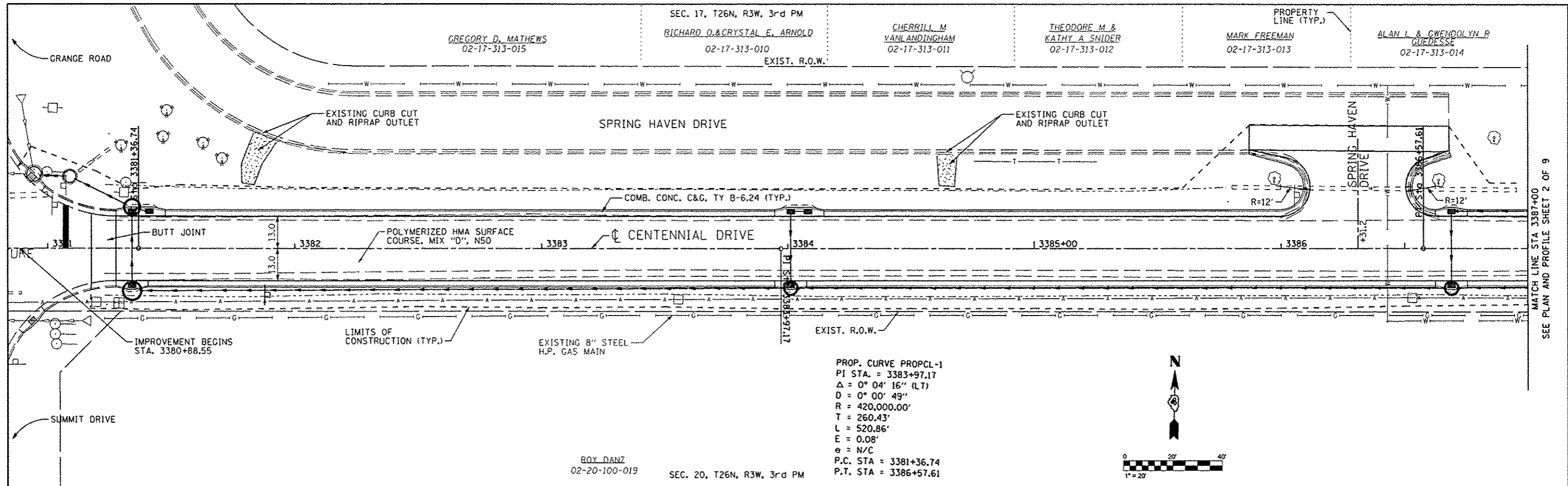


DATE	
BY	
REVIEWED	
APPROVED	
ALIGNED	
CHECKED	
NOTE BOOK	
NO. OF WAY CHECKED	
CADD FILE NAME	
PLAN	

DATE	
BY	
REVIEWED	
APPROVED	
ALIGNED	
CHECKED	
NOTE BOOK	
NO. OF WAY CHECKED	
CADD FILE NAME	
PROFILE	



FILE NAME s:\237\2009\23709006\CentennialDrivePhase	USER NAME -llouis	DESIGNED -	REVISED -
MAURER-STUTZ ENGINEERS SURVEYORS	PH:\CADD\CADD Sheets\0489492-akt-plnpr fld	DRAWN -	REVISED -
PLLOT SCALE = 1/8" = 1'	PLLOT DATE = 10/12/2012	CHECKED -	REVISED -
		DATE -	REVISED -

<b>CITY OF EAST PEORIA WASHINGTON TOWNSHIP</b>		<b>CENTENNIAL DRIVE - PHASE V (GRANGE RD TO SPRING CREEK RD) PLAN AND PROFILE</b>				F.A.J. RTE. 6745	SECTION 07-00069-00-WR	COUNTY TAZEWELL	TOTAL SHEETS 98	SHEET NO. 20	
SCALE:	SHEET NO.	OF	SHEETS	STA.	TO STA.	CONTRACT NO. 89492					
						FED. ROAD DIST. NO.	ILLINOIS FED. AID PROJECT				