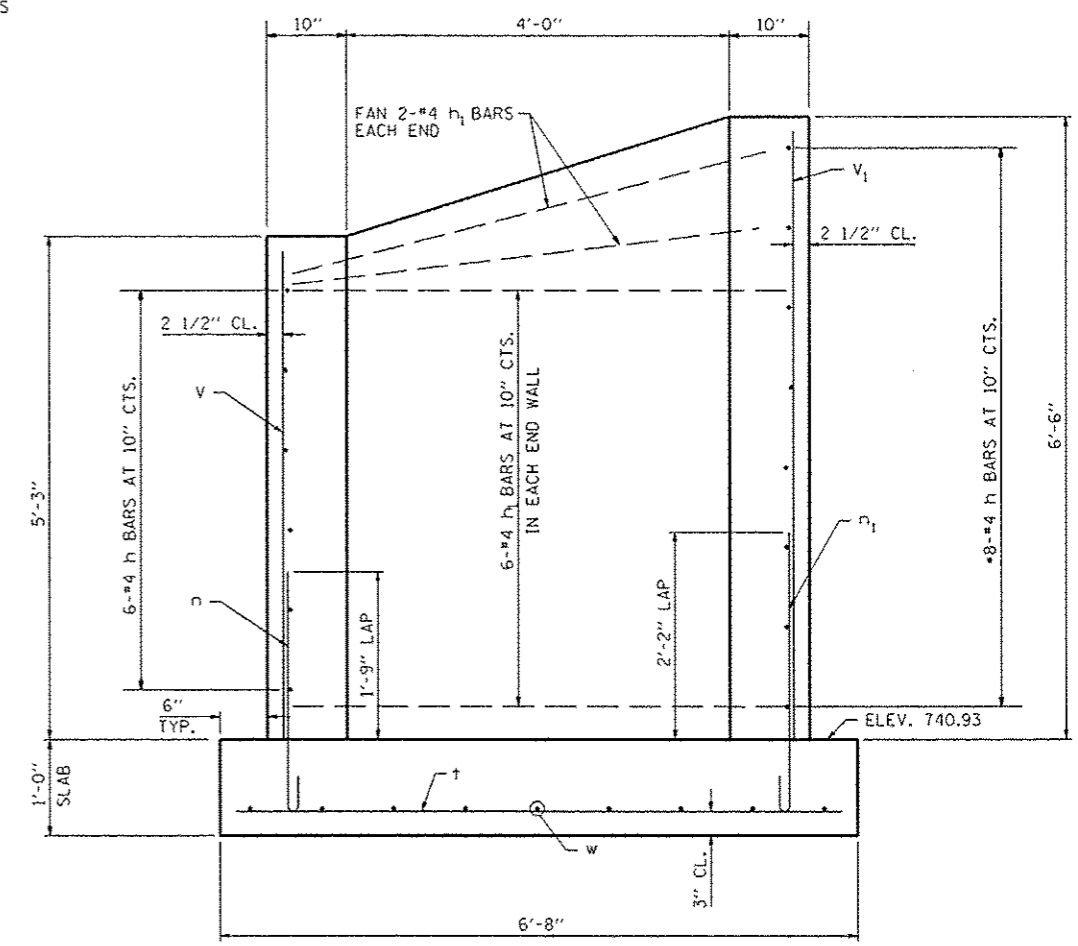
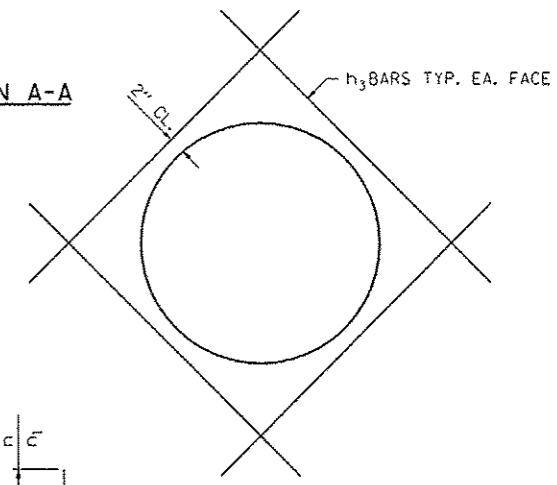


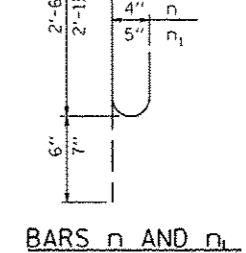
•CUT BARS TO FIT AROUND PIPE
NOTE: CAST WALL AROUND PIPES



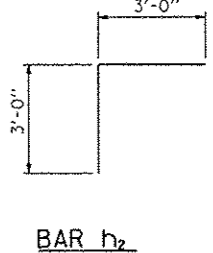
SECTION A-A



PIPE OPENING REIN.



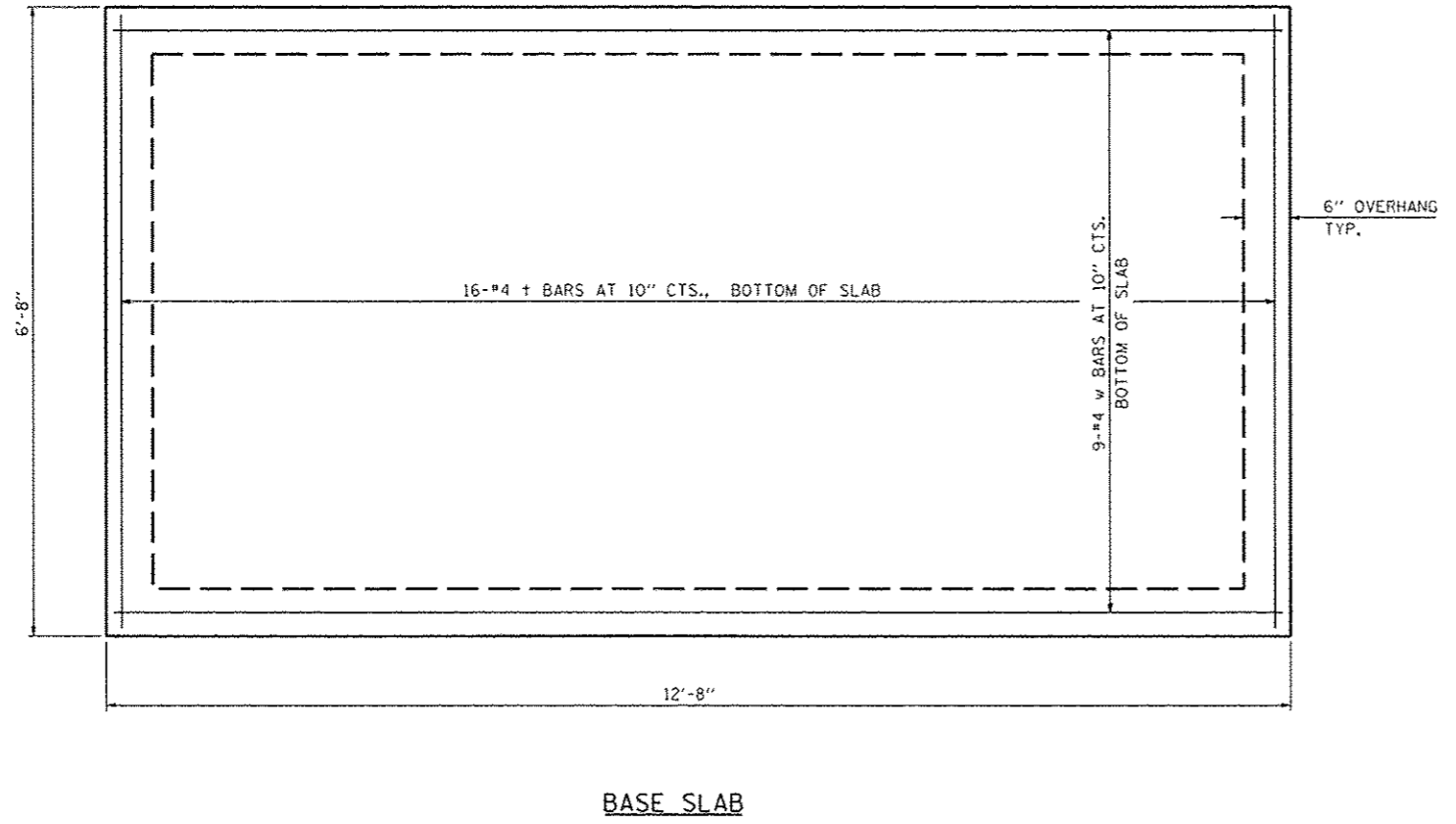
BARS n AND n1



BAR h2

BILL OF MATERIAL FOR INFORMATION ONLY

BAR	NO.	SIZE	LENGTH	SHAPE
h	14	#4	11'-3"	—
h1	16	#4	5'-3"	—
h2	28	#5	6'-0"	U
h3	16	#4	6'-0"	—
n	24	#4	3'-0"	—
n1	8	#5	3'-6"	U
t1	16	#4	6'-4"	—
v	12	#4	5'-0"	—
v1	25	#4	6'-3"	—
w	9	#4	12'-4"	—
REINFORCEMENT BARS			POUND	760
CONCRETE			CU. YD.	8.2



BASE SLAB