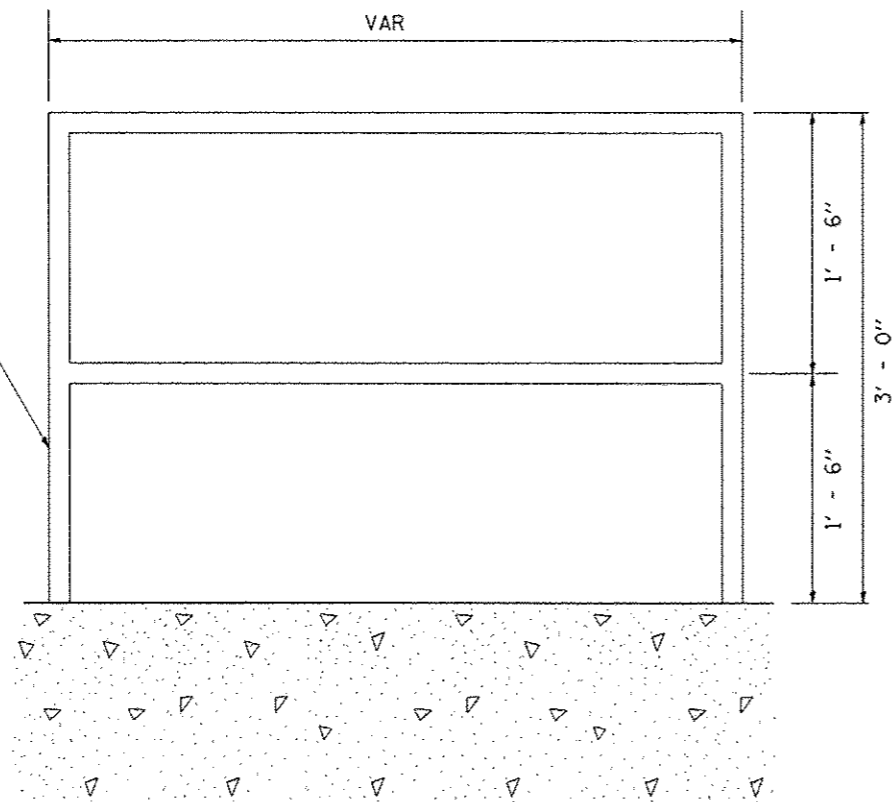


1 1/2" DIA. STEEL HANDRAIL
(STYLE & MANUFACTURER
TO BE DETERMINED
BY ENGINEER & CONTRACTOR)



GENERAL NOTES:

ALL HANDRAIL DIMENSIONS SHALL BE VERIFIED BY CONTRACTOR PRIOR TO FABRICATION OF PIPE HANDRAIL, BASED UPON FINAL LOCATION OF MOUNTING BOLTS.

HANDRAIL SHALL CONFORM TO SECTION 510 WITH THE EXCEPTION THAT ALL PIPE AND CONNECTIONS SHALL BE WELDED GALVANIZED OR ALUMINUM ACCORDING TO ARTICLE 1006.27, 1006.30, OR 1006.34.

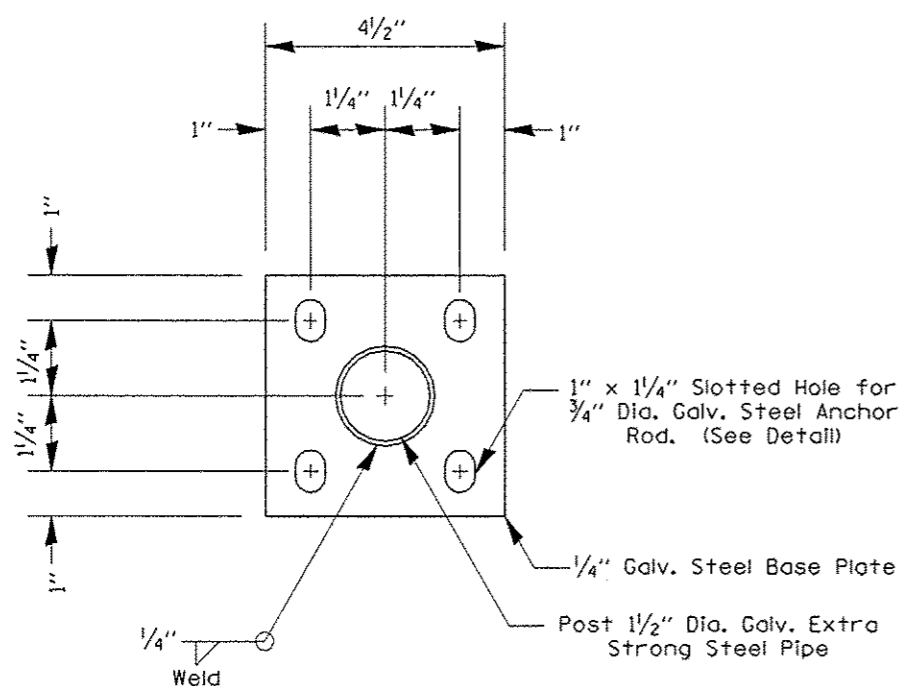
THE DIAMETER OF THE GRIPPING SURFACE OF THE HANDRAIL SHALL BE 1-1/4" TO 1-1/2"

ENDS OF HANDRAIL SHALL BE ROUNDED.

HAND & SAFETY RAILS SHALL NOT ROTATE WITHIN THEIR FITTINGS.

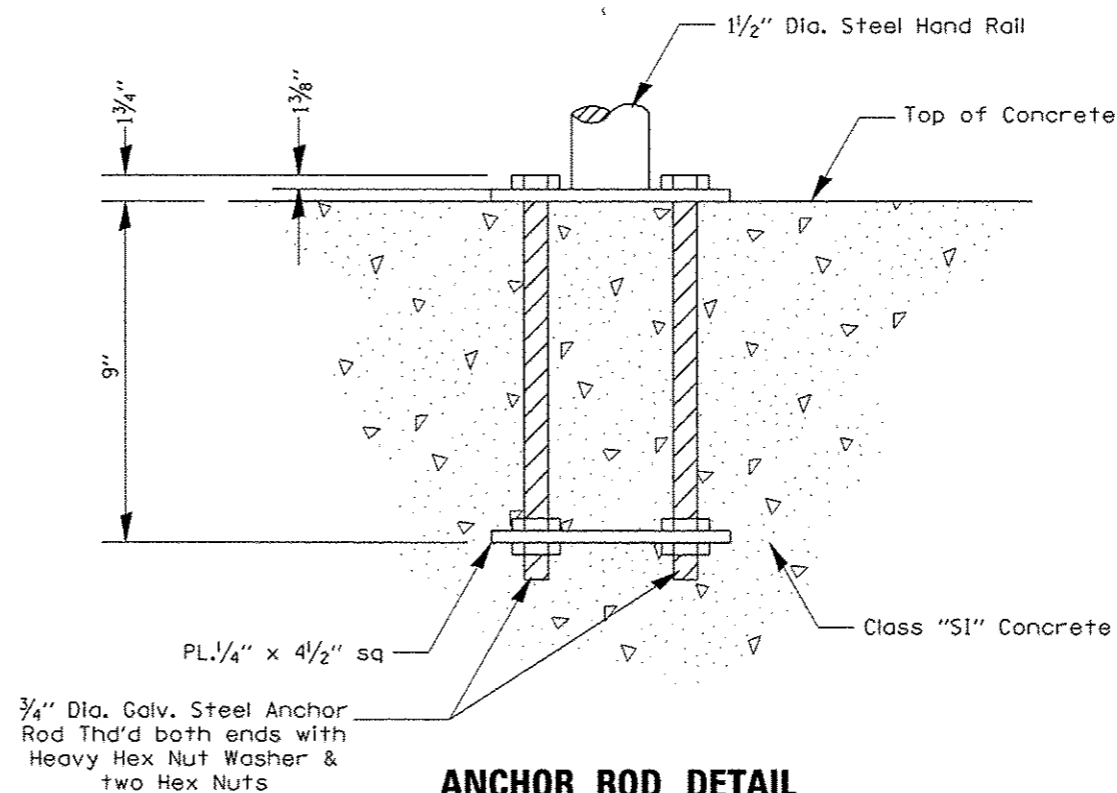
GRIPPING SURFACES SHALL BE UNINTERRUPTED BY NEWEL POSTS, OTHER CONSTRUCTION ELEMENTS, OR OBSTRUCTIONS.

THE CONTRACT UNIT PRICE "FOOT" FOR PIPE HANDRAIL SHALL INCLUDE THE PIPE, ANCHOR RODS, ANCHOR BOLTS, BOLTS, NUTS, WASHERS, AND STEEL BASE PLATES.



POST BASE PLATE DETAIL

(Included in the cost of Pipe Handrail)



ANCHOR ROD DETAIL

(Included in the cost of Pipe Handrail)

FILE NAME :	USER NAME : rjanderson	DESIGNED - RJA	REVISED -	CITY OF EAST PEORIA WASHINGTON TOWNSHIP	CENTENNIAL DRIVE -- PHASE V (GRANGE RD TO SPRING CREEK RD) PIPE HANDRAIL DETAIL	F.A.U. RTE.	SECTION	COUNTY	TOTAL SHEETS	SHEET NO.	
\\237\2009\23709006\CentennialDrivePhaseV\PI\CADD\CADD Sheets\0489492-sht-detail.dwg	DRWN	WLL	REVISED -			6745	07-00069-00-WR	TAZEWELL	98	53	
PLOT SCALE = 80.0000 / IN.	CHECKED - RJA	REVISED -	REVISED -			CONTRACT NO. 89492					
PLOT DATE = 10/13/2012	DATE -	REVISED -	REVISED -			ILLINOIS FED. AID PROJECT					
MAURER-STUTZ ENGINEERS SURVEYORS				SCALE: SHEET NO. OF SHEETS STA. TO STA.							