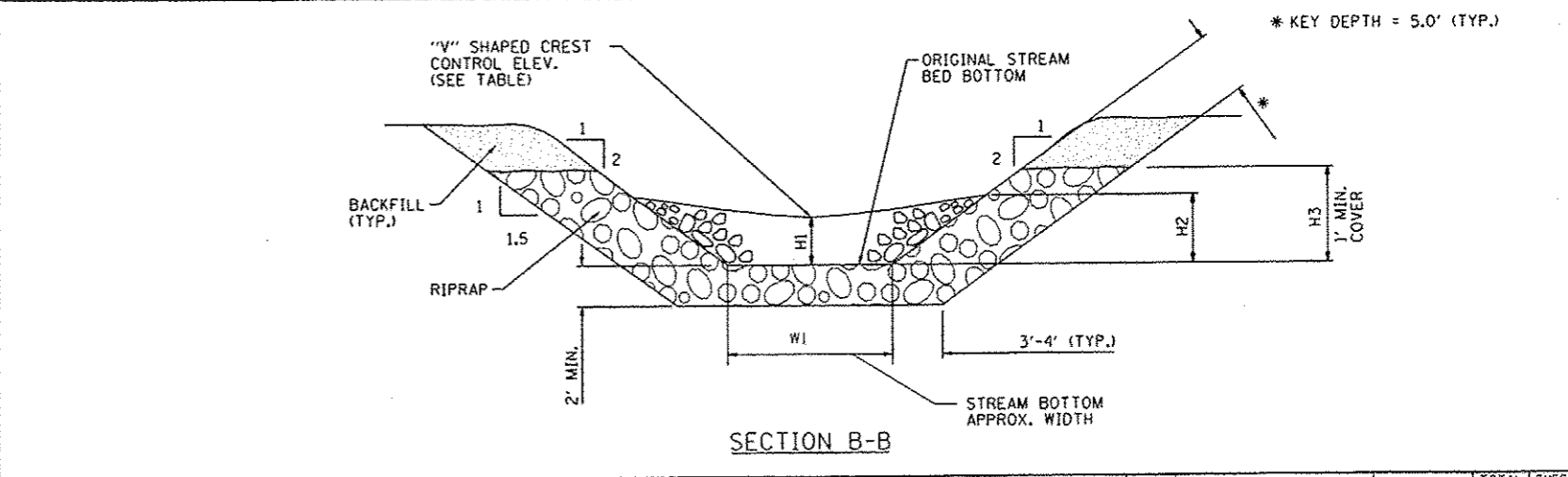
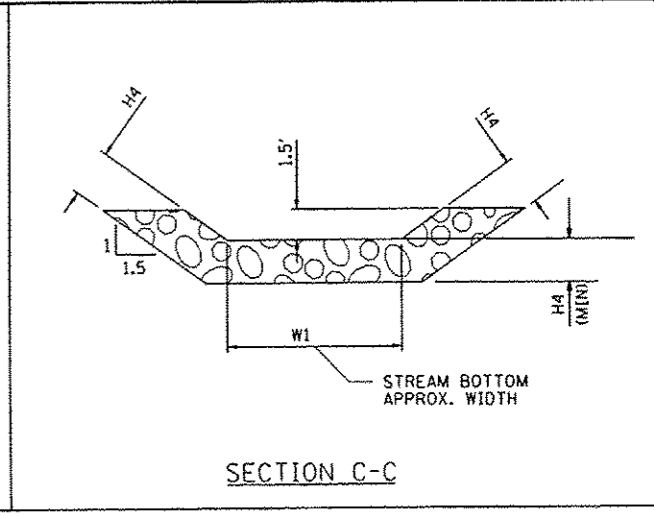
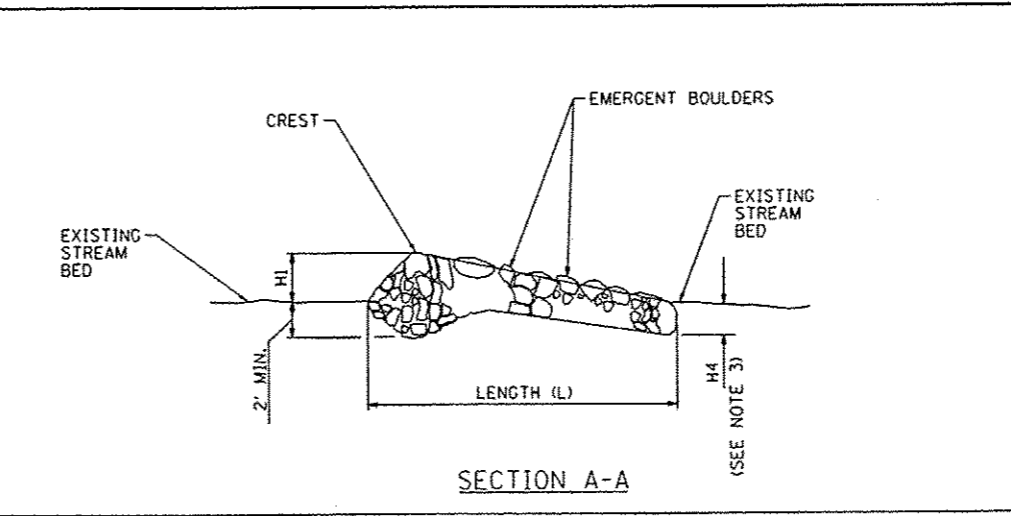
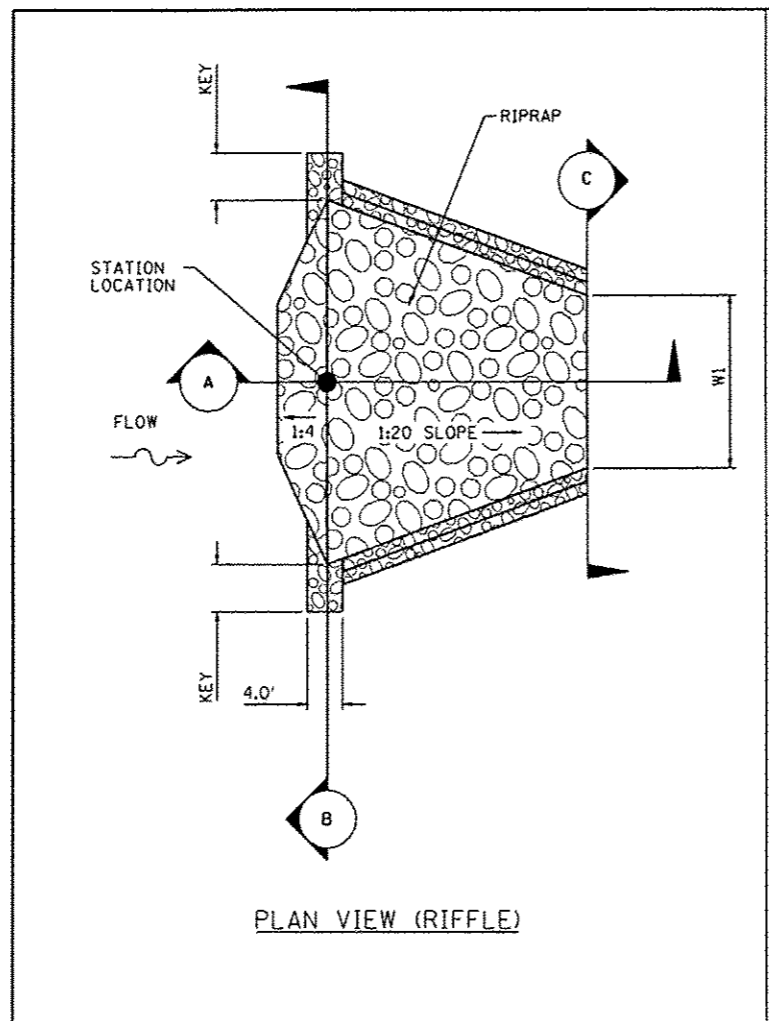


RIFFLE NO.	STATION	CONTROL ELEVATION	H1 (FT)	H2 (FT)	H3 (FT)	H4 (FT)	W1 (FT)	L (FT)	X2810210 STONE RIPRAP CLASS A5 (SPECIAL) (TONS)
1	1+20.00	734.0	1.2	1.7	2.7	1.7	8.0	28.8	56
2	0+06.00	733.0	1.6	2.1	3.1	1.7	8.0	38.4	75
3	0+02.00	731.8	1.4	1.9	2.9	1.7	6.0	33.6	59
TOTAL									190

$H2 = H1 + 0.5'$

GRAD. NO.	H4 (D100)	
	FT	IN
A-4	1.3	7.4
A-5	1.7	9.8
A-6	2	12.1
A-7	2.5	14.6

- NOTES:
- 1) ROCK GRADATION SHALL MEET IDOT REQUIREMENTS FOR GRAD. NO. 5 RIPRAP QUALITY DESIGNATION "A", OR AS DESIGNATED BY THE ENGINEER.
 - 2) USE LARGEST AVAILABLE STONES FROM AVAILABLE MATERIAL AS SHOWN FOR THE EMERGENT BOULDERS AND CREST STONE.
 - 3) DEPTH OF BED KEY (H4) EQUALS D100 (OR LARGEST ROCK)
 - 4) NO BEDDING OR FILTER FABRIC REQUIRED.



FILE NAME *	USER NAME * rjanderson	DESIGNED - RJA	REVISED -
W:\237\2009\23709006\CentennialDr\vePhoto\PH\CAAD\CA00 Sheets\0489492-shr-details		CHECKED - WLL	REVISED -
PLOT SCALE = 20.0000 / IN.		CHECKED - RJA	REVISED -
PLOT DATE = 10/28/2012		DATE -	REVISED -

**CITY OF EAST PEORIA
WASHINGTON TOWNSHIP**

**CENTENNIAL DRIVE - PHASE V (GRANGE RD TO SPRING CREEK RD)
RIFFLE DETAIL**

SCALE: SHEET NO. OF SHEETS STA. TO STA.

F.A.U. RTE. 6745	SECTION 07-00069-00-WR	COUNTY TAZEWELL	TOTAL SHEETS 98	SHEET NO. 57
CONTRACT NO. 89492				
ILLINOIS FED. AID PROJECT				