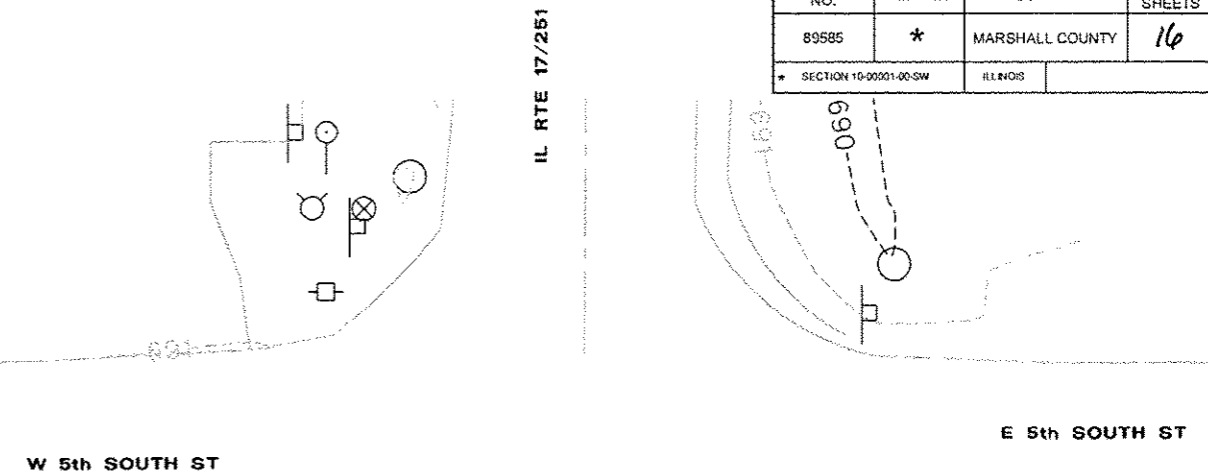
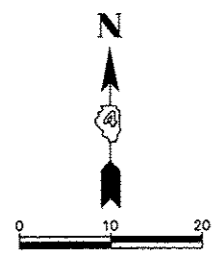
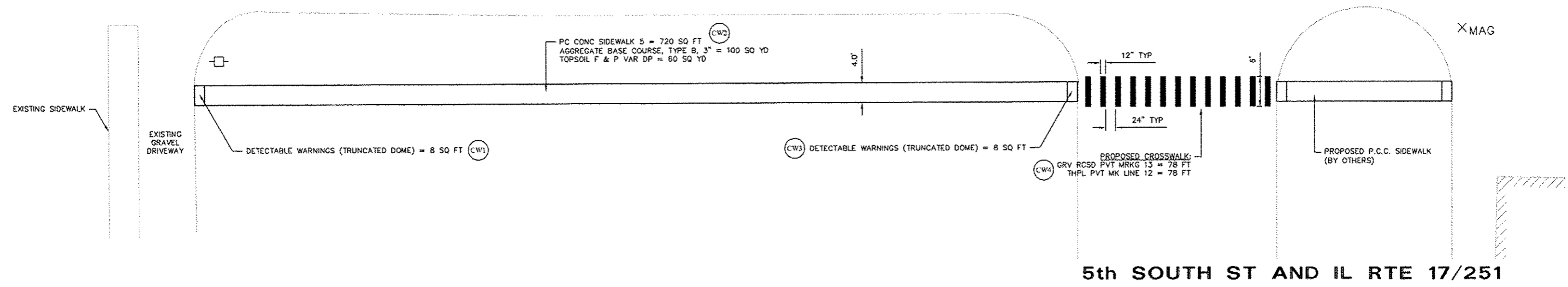


CONTRACT NO.	SECTION	COUNTY	TOTAL SHEETS	SHEET NO.
89585	*	MARSHALL COUNTY	16	14
* SECTION 10-00001-00-SW		ILLINOIS		



W 5th SOUTH ST

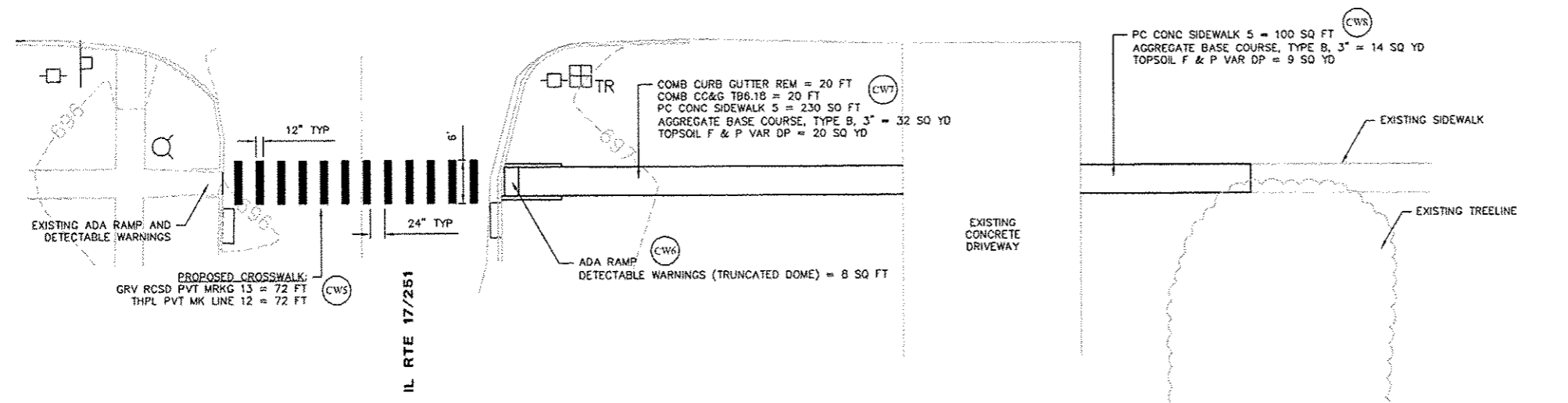
E 5th SOUTH ST



5th SOUTH ST AND IL RTE 17/251

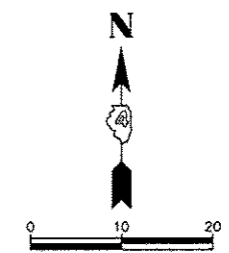
W 3rd SOUTH ST

E 3rd SOUTH ST



3rd SOUTH ST AND IL RTE 17/251

NOTE: EARTH EXCAVATION WILL NOT BE MEASURED FOR PAYMENT BUT SHALL BE CONSIDERED INCIDENTAL TO PC CONC SIDEWALK 5.



McClure
Engineering Associates, Inc.
1138 Columbus Street
Ottawa, Illinois 61350
(615) 433-2080
Design Firm License: Illinois 184-000816
Copyright 2011 By McClure Engineering Associates, Inc.

REVISIONS	
NAME	DATE
KED	11/5/12

**CROSSWALK
PLAN SHEET**

SCALE: AS NOTED
DATE: 2011
DRAWN BY: KED
CHECKED BY: SMK
FILE: G:\Drawings\Marshall\10-000-Sw Revise\14 PS 9.dwg