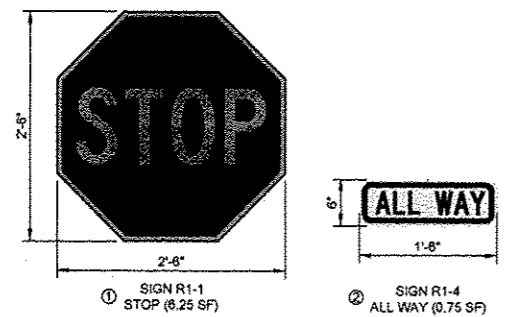


W. MAIN STREET
IL RT 8 / RT 78

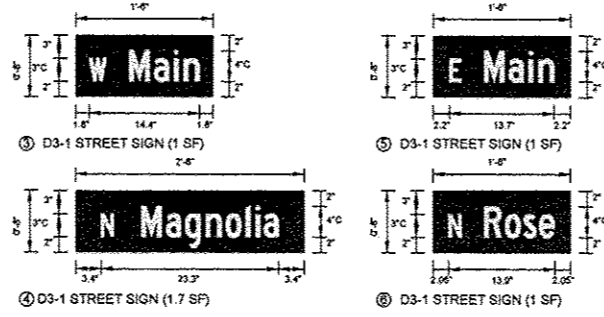
BEGIN
IMPROVEMENTS
STA 15+00.66

NEW CURB RAMP AND SIDEWALK
BY OTHERS, CURRENTLY UNDER
CONSTRUCTION BY PRIVATE
DEVELOPER.

1 DESIGN PLAN
SCALE: 1" = 10'-0"

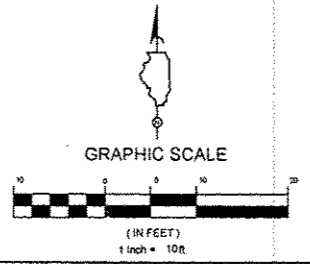


2 SIGN PANEL - TYPE 1 DETAILS
SCALE: NTS



3 STREET NAME SIGN DETAILS
SCALE: NTS

- NOTES:
- STREET NAME SIGNS SHALL BE ACCORDING TO THE MUTCD STANDARDS FOR SIGN DESIGNATION D3-1.
 - MINIMUM SIGN SIZE AND LETTERING REQUIREMENTS FOR LOCAL ROADS WITH 25 MPH SPEED LIMIT SHALL BE USED.
 - SIGNS SHALL BE RETROREFLECTIVE.
 - SIGN BACKGROUND COLOR SHALL BE GREEN.
 - SIGN LEGEND SHALL BE WHITE.
 - OMIT BORDER FROM SIGNS.



- LEGEND AND ABBREVIATIONS:
- R.O.W. LINE
 - TEMPORARY CONSTRUCTION EASEMENT
 - BARRIER CURB
 - COMBINATION CONCRETE CURB AND GUTTER, TYPE B-6.12
 - DEPRESSED CURB AND GUTTER
 - PEDESTRIAN RAILING
 - PEDESTRIAN RAIL (SPECIAL)
 - PORTLAND CEMENT CONCRETE SIDEWALK 5 INCH
 - CONCRETE PAVER SIDEWALK
 - CONCRETE CURB (SPECIAL) OR CONCRETE STRUCTURES (SPECIAL), SEE TYP. MODULE - ENLARGED DESIGN PLAN
 - CONCRETE STEPS
 - DETECTABLE WARNINGS
 - BRICK PAVEMENT REMOVAL AND REPLACEMENT
 - HOT MIX ASPHALT SURFACE COURSE, MIX "C", N50 (1-1/2" DEPTH)
 - PROPOSED SIGN KEY
 - PLANTER
 - ORNAMENTAL LIGHT UNIT (SEE LIGHTING PLAN AND DETAILS)
 - WATER VALVE 3/4" (TYP)

FILE NAME *	DESIGNED WS	REVISED 1/4/2013
USER NAME *	DRAWN TL/BD	REVISED -
PLOT DATE *	CHECKED DA	REVISED -
	DATE 10/29/2012	REVISED -



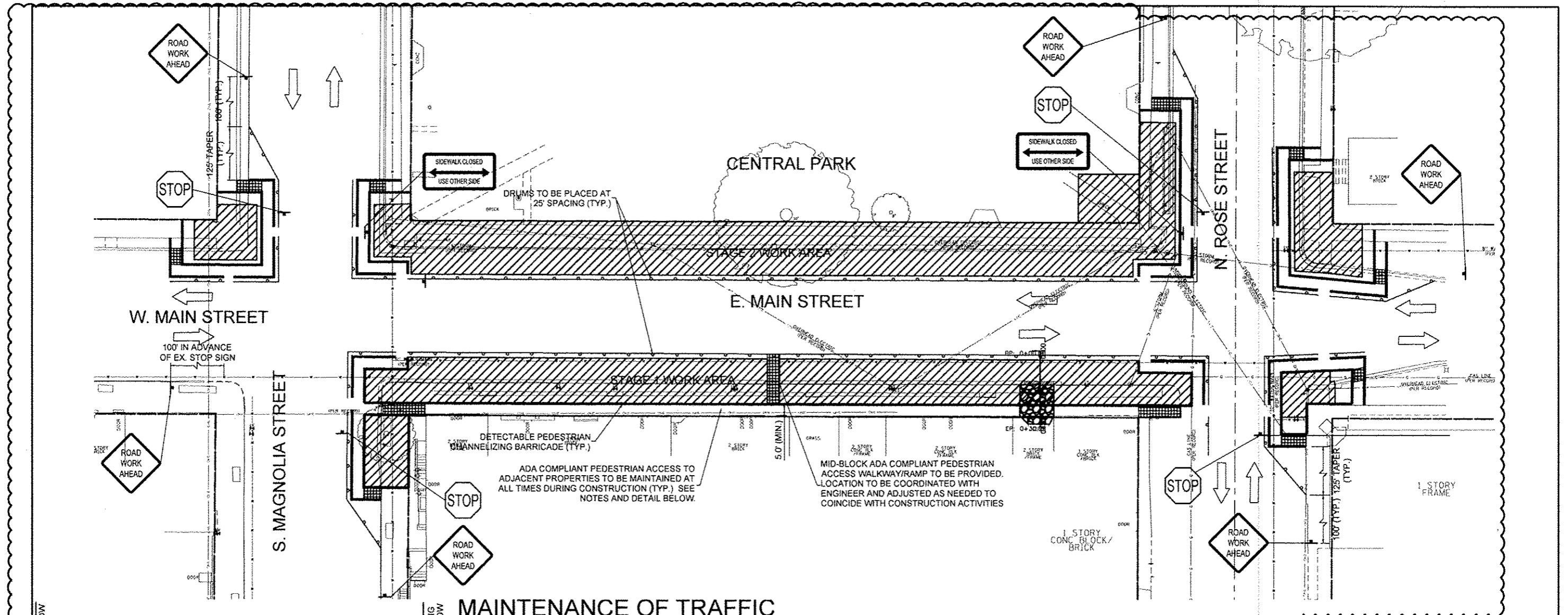
CITY OF ELMWOOD

DESIGN PLAN
ELMWOOD STREETScape

SCALE: 1" = 10'-0"

STA. 15+00.66 TO STA. 17+50.00

F.A. R.T.E.	SECTION	COUNTY	TOTAL SHEETS	SHEET NO.
	10-00002-00-LS	PEORIA	34	19
CONTRACT NO. 89604				
[ILLINOIS] FED. AID PROJECT				



MAINTENANCE OF TRAFFIC

PEDESTRIAN PATH NOTES AND DETAILS:

- ALL TRAFFIC CONTROL AND PROTECTION PROCEDURES SHALL BE COORDINATED WITH THE CITY AND APPROVED BY THE ENGINEER PRIOR TO THE START OF CONSTRUCTION.
- THE CONTRACTOR SHALL CONDUCT A WEEKLY COORDINATION MEETING WITH BUSINESS OWNERS IN THE DOWNTOWN DISTRICT TO DISCUSS UPCOMING CONSTRUCTION ACTIVITIES AND TO COORDINATE ADA ACCESSIBLE ACCESS TO EACH BUSINESS THROUGHOUT THE DURATION OF THE PROJECT. ANY DISRUPTION TO THE NORMAL TRAVEL OF PEDESTRIAN'S ACCESS SHALL BE COORDINATED WITH THE BUILDING OWNERS AND ENGINEER AT LEAST ONE WEEK IN ADVANCE OF BEGINNING WORK. WORK SHALL BE COORDINATED TO MINIMIZE IMPACT TO BUSINESS OPERATIONS.
- THE CONTRACTOR SHALL MAINTAIN PEDESTRIAN ACCESS (MIN. 5' WIDTH) TO ADJACENT PROPERTIES (WHERE APPLICABLE.) CROSSWALKS, SIDE STREETS, AND BUILDING ENTRIES AT ALL TIMES BY INSTALLING CLEARLY MARKED ADA COMPLIANT PLYWOOD WALKWAYS AND RAMPS THROUGHOUT THE WORK ZONES. CONTRACTOR TO SUBMIT SHOP DRAWINGS FOR PROPOSED WALKWAYS TO ENGINEER FOR APPROVAL. PEDESTRIAN ACCESS TO ADJACENT PROPERTIES SHALL BE UNINTERRUPTED UNTIL THE WALKWAY IS FULLY RESTORED. THE CONTRACTOR SHALL ALSO BE RESPONSIBLE FOR THE INSTALLATION AND MAINTENANCE OF SIGNAGE AND OTHER ITEMS TO ENSURE SAFE PEDESTRIAN ACCESS. THESE ACCESSES MUST BE OBSERVED AND PROTECTED BY THE CONTRACTOR AT ALL TIMES.
- USE ONE "PEDESTRIAN WALKWAY (ARROW)" (BLACK LEGEND ON WHITE REFLECTORIZED BACKGROUND) SIGN AT EACH END OF EACH SIDEWALK SECTION BEING DIVERTED.
- AT EACH POINT OF CLOSURE, SUFFICIENT NUMBERS OF BARRICADES MUST BE USED TO COMPLETELY CLOSE THE PATHWAY.
- PEDESTRIAN WALKWAYS MUST BE MAINTAINED FREE OF ANY OBSTRUCTIONS AND HAZARDS SUCH AS HOLES, DEBRIS, MUD, CONSTRUCTION EQUIPMENT, STORED MATERIALS, ETC. AND MUST BE BROOM SWEEP DAILY OR AS DIRECTED BY THE ENGINEER.

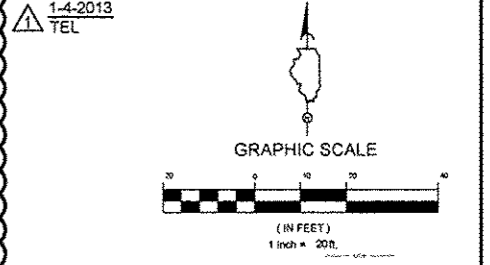
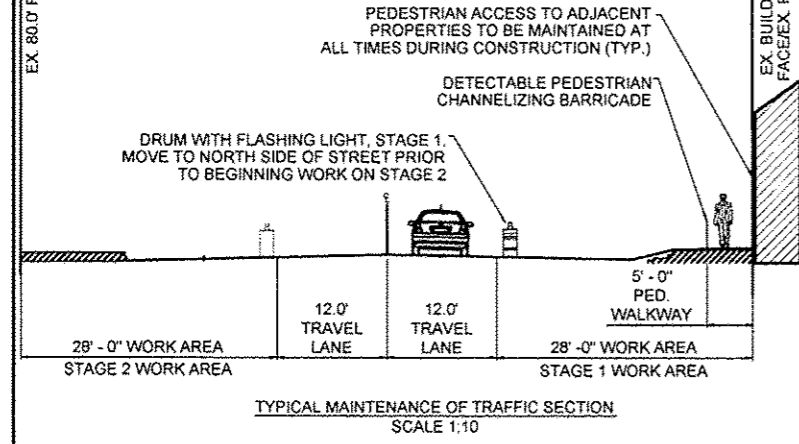
- ALL HAZARDS NEAR OR ADJACENT TO WALKWAYS MUST BE CLEARLY DELINEATED.
- MAINTENANCE OF TRAFFIC SHALL BE MAINTAINED IN ACCORDANCE WITH MAINTENANCE OF TRAFFIC PLAN, SPECIAL PROVISIONS, IDOT STANDARD DETAILS AND SPECIFICATIONS. SHOULD THE CONTRACTOR WISH TO MODIFY THE ESTABLISHED MAINTENANCE OF TRAFFIC AND STAGING PLAN THE CONTRACTOR SHALL PROVIDE DETAILED CAD GENERATED PLANS TO SCALE TO OUTLINE THE PROPOSED MAINTENANCE OF TRAFFIC AND STAGING PROCEDURES. ANY MODIFICATION TO THE ESTABLISHED MAINTENANCE OF TRAFFIC AND STAGING PLAN SHALL BE APPROVED BY THE ENGINEER AND ANY APPROVED CHANGES SHALL BE FULLY ENFORCEABLE IN ACCORDANCE WITH THE STANDARD SPECIFICATIONS FOR FAILURE TO MEET MAINTENANCE OF TRAFFIC REQUIREMENTS.

CONSTRUCTION STAGING:

PARKING LOCATION FOR CONSTRUCTION WORKERS, CONSTRUCTION EQUIPMENT, AND STAGING FOR CONSTRUCTION MATERIALS TO BE COORDINATED WITH ENGINEER PRIOR TO THE START OF CONSTRUCTION.

STAGE 1 - SOUTH SIDE EAST MAIN STREET
 INITIAL WORK ZONE - STAGE 1 CONTRACT WORK SHALL COMMENCE WITH THE SOUTH R.O.W. IMPROVEMENTS FOR EAST MAIN STREET. WORK SHALL BE COORDINATED TO MINIMIZE IMPACT TO BUSINESS OPERATIONS. EXISTING STREET PARKING SHALL BE MAINTAINED ON THE NORTH SIDE OF EAST MAIN STREET AND SOUTH MAGNOLIA AND SOUTH ROSE STREETS DURING STAGE 1 CONSTRUCTION.

STAGE 2 - NORTH SIDE EAST MAIN STREET
 INITIAL WORK ZONE - STAGE 2 CONTRACT WORK SHALL INCLUDE THE NORTH R.O.W. IMPROVEMENTS FOR EAST MAIN STREET. STAGE 2 WORK SHALL NOT COMMENCE UNTIL FULL PEDESTRIAN ACCESS AND STREET PARKING IS RESTORED IN THE STAGE 1 WORK AREA. CURB RAMPS AND TEMPORARY ACCESS AROUND STAGE 2 WORK AREA SHALL BE PROVIDED IN ACCORDANCE WITH MAINTENANCE OF TRAFFIC PLAN, SPECIAL PROVISIONS, IDOT STANDARD DETAILS AND SPECIFICATIONS.



LEGEND AND ABBREVIATIONS:

- WORK AREA
- AGGREGATE FOR TEMPORARY ACCESS
- ADA COMPLIANT TEMPORARY PLYWOOD RAMP
- TEMPORARY TRAFFIC CONTROL SIGN
- DRUMS
- DETECTABLE PEDESTRIAN CHANNELIZING BARRICADE

FILE NAME *	DESIGNED	REVISED 1/4/2013
USER NAME *	DRAWN	REVISED -
PLOT DATE *	CHECKED	REVISED -
	DATE 10/29/2012	REVISED -

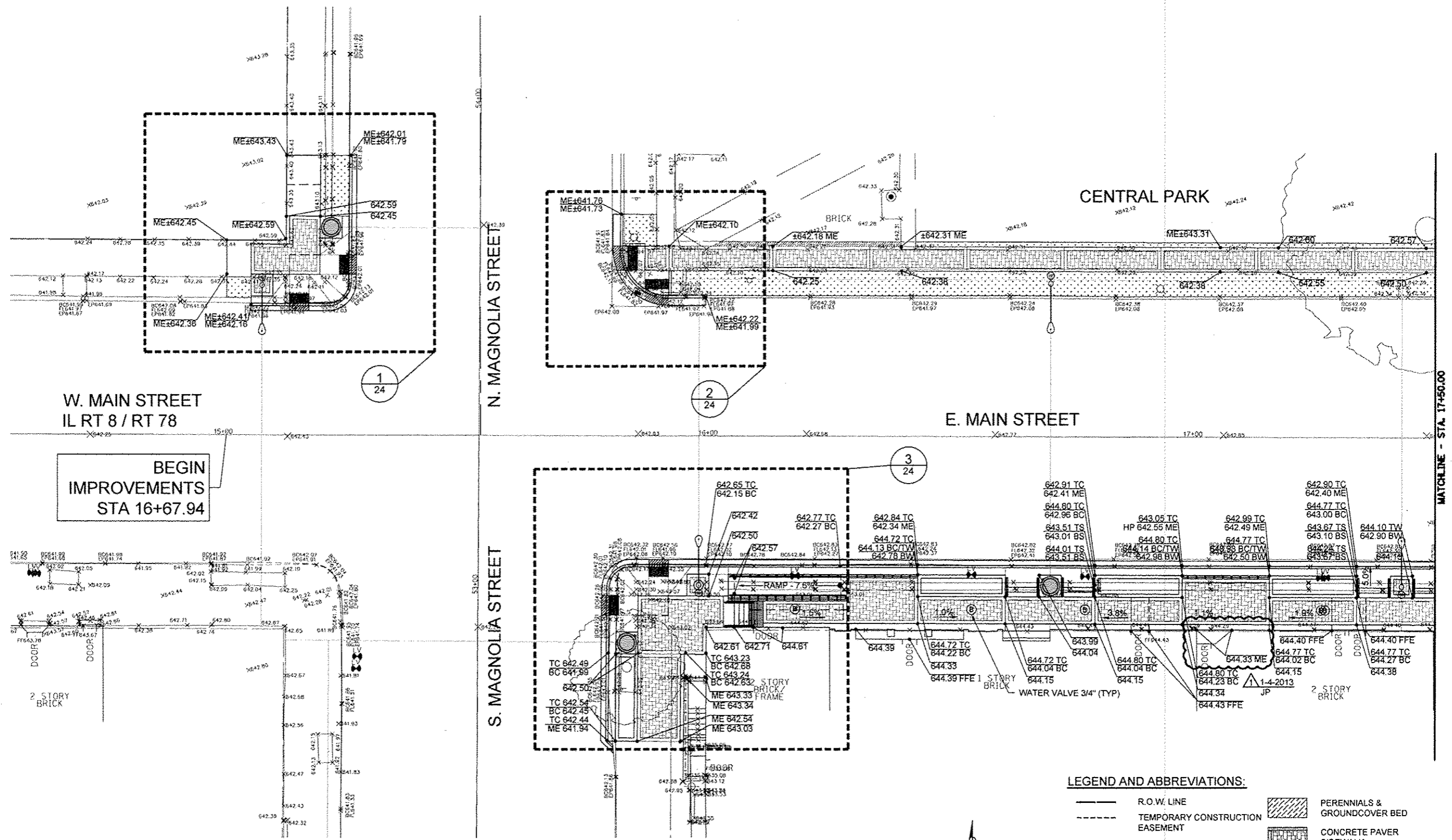


CITY OF ELMWOOD

**MAINTENANCE OF TRAFFIC PLAN
ELMWOOD STREETScape**

SCALE: 1" = 20'-0"

F.A. RTE.	SECTION	COUNTY	TOTAL SHEETS	SHEET NO.
	10-00002-00-LS	PEORIA	34	21
				CONTRACT NO. 89604
(ILLINOIS) FED. AID PROJECT				



W. MAIN STREET
IL RT 8 / RT 78

BEGIN
IMPROVEMENTS
STA 16+67.94

N. MAGNOLIA STREET

S. MAGNOLIA STREET

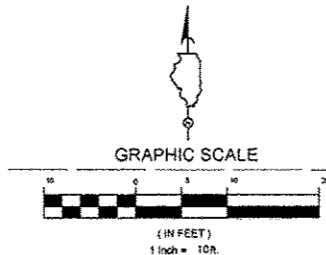
E. MAIN STREET

CENTRAL PARK

MATCHLINE - STA. 17+50.00

LEGEND AND ABBREVIATIONS:

- R.O.W. LINE
- - - TEMPORARY CONSTRUCTION EASEMENT
- PEDESTRIAN RAILING
- PEDESTRIAN RAIL (SPECIAL)
- ⊙ WATER VALVE 3/4" (TYP)
- TC TOP OF CURB
- BC BOTTOM OF CURB
- ME MATCH EXISTING
- ▨ PERENNIALS & GROUND COVER BED
- ▤ CONCRETE PAVER SIDEWALK
- ▥ PORTLAND CEMENT CONCRETE SIDEWALK 5 INCH
- ⊕ ORNAMENTAL LIGHTING UNIT
- TS TOP OF STEP
- BS BOTTOM OF STEP
- FFE FINISH FLOOR ELEVATION



FILE NAME =	DESIGNED WS/OE	REVISED 1/4/2013
USER NAME =	DRAWN TL/JP	REVISED -
PLOT DATE =	CHECKED DA	REVISED -
	DATE 10/29/2012	REVISED -

TERRA
ENGINEERING LTD.
225 W. OHIO ST., FOURTH FL.
CHICAGO, IL 60604
(312)467-0125

CITY OF ELMWOOD

GRADING AND UTILITY ADJUSTMENT PLAN
ELMWOOD STREETScape
SCALE: 1" = 10'-0"
STA. 15+00.66 TO STA. 17+50.00

F.A. RTE.	SECTION	COUNTY	TOTAL SHEETS	SHEET NO.
	10-00002-00-LS	PEORIA	34	22
				CONTRACT NO. 89604
[ILLINOIS] FED. AID PROJECT				