

INDEX OF SHEETS

- 1 COVER SHEET
- 2 GENERAL NOTES & SUMMARY OF QUANTITIES
- 3 SCHEDULE OF QUANTITIES
- 4 ENTRANCE DETAILS
- 5.-6. TYPICAL SECTIONS
- 7. PLAN AND PROFILE
- 8. TRAFFIC CONTROL PLAN
- 9. GUARDRAIL AND SHOULDER DETAILS
- 10-23. BRIDGE PLANS
- 24.-32. CROSS SECTIONS

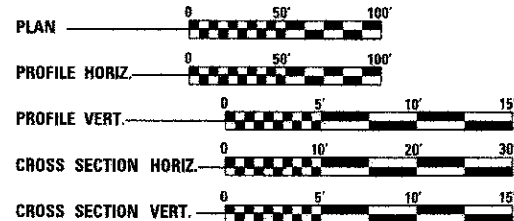
HIGHWAY STANDARDS

- 000001-06 STANDARD SYMBOLS, ABBREVIATIONS AND PATTERNS
- 280001-07 TEMPORARY EROSION CONTROL SYSTEMS
- 515001-03 NAME PLATES FOR BRIDGES
- 630001-10 STEEL PLATE BEAM GUARDRAIL
- 630301-06 SHOULDER WIDENING FOR TYPE 1 (SPECIAL) GUARDRAIL TERMINALS
- 631011-09 TRAFFIC BARRIER TERMINAL, TYPE 2
- 631032-03 TRAFFIC BARRIER TERMINAL, TYPE 6A
- 635006-03 REFLECTOR AND TERMINAL MARKER PLACEMENT
- 635011-02 REFLECTOR MARKER AND MOUNTING DETAILS
- 701306-03 LANE CLOSURE 2L2W > 45MPH DAY ONLY
- 701901-02 TRAFFIC CONTROL DEVICES
- B.L.R.21-9 TYPICAL APPLICATION FOR TRAFFIC CONTROL DEVICES FOR CONSTRUCTION ON RURAL LOCAL HIGHWAYS

UTILITY CONTACTS:

UTILITY TYPE	UTILITY TYPE	UTILITY TYPE
ELECTRIC	TELEPHONE	TELEPHONE
AMEREN CILCO	MCLEOD USA	VERIZON NORTH, INC.
(217) 753-5187	(217) 876-7194	(309) 663-3422
ATTN: RICK COMBS	ATTN: MARK MILLS	ATTN: JONNA FRICKE

SCALES



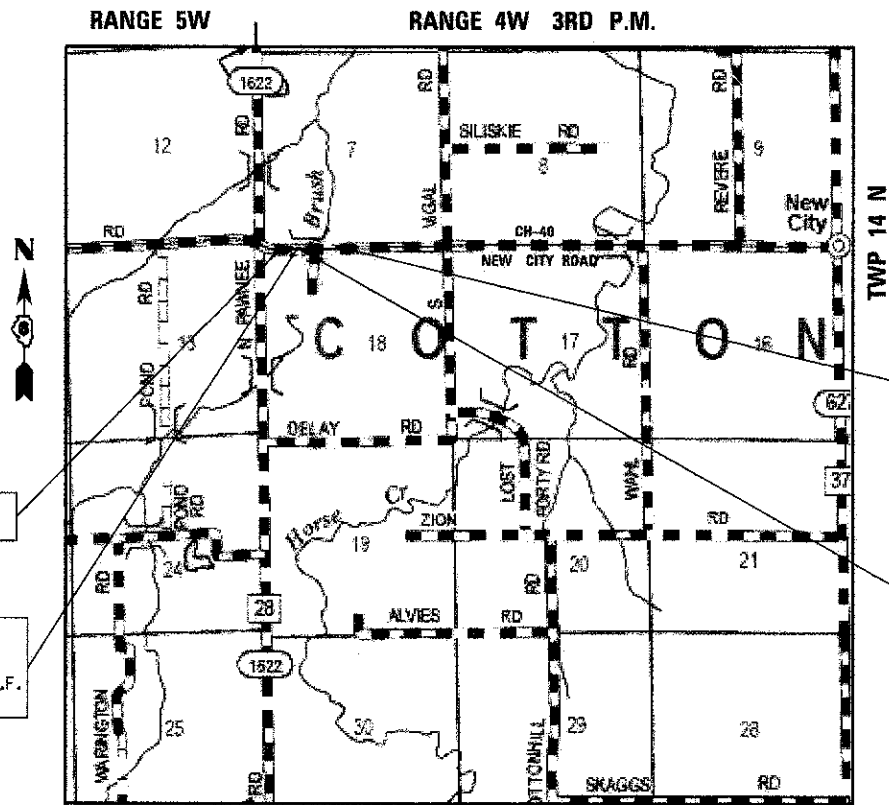
FULL SIZE PLANS HAVE BEEN PREPARED USING STANDARD ENGINEERING SCALES. REDUCED SIZED PLANS WILL NOT CONFORM TO STANDARD SCALES. IN MAKING MEASUREMENTS ON REDUCED PLANS, THE ABOVE SCALES MAY BE USED.

J.U.L.I.E.
JOINT UTILITY LOCATION INFORMATION FOR EXCAVATION
1-800-892-0123

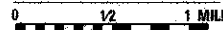
CONTRACT NO. 93585

PLANS FOR PROPOSED HIGHWAY BRIDGE PROGRAM

**REPLACEMENT OF BRIDGE OVER BRUSH CREEK
FAS 624 (C.H. 40) NEW CITY ROAD
SECTION 08-00085-00-BR
PROJECT BRS-0624(111)
JOB NUMBER C-96-271-10
SANGAMON COUNTY**



LOCATION MAP



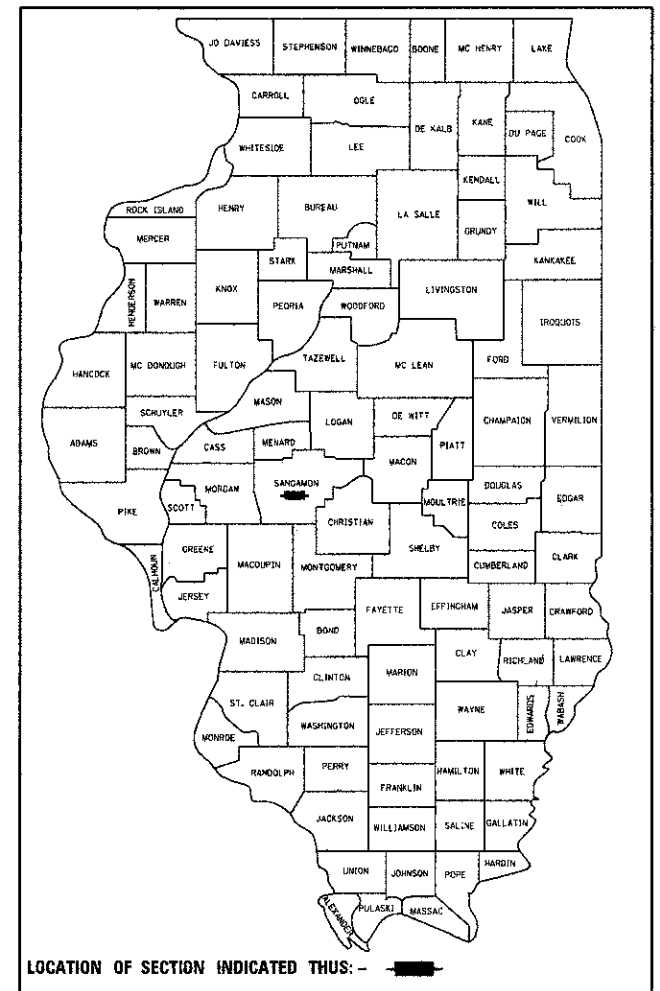
GROSS LENGTH OF IMPROVEMENT = 662.28 FEET (0.125 MI)
NET LENGTH OF IMPROVEMENT = 662.28 FEET (0.125 MI)

FUNCTIONAL CLASSIFICATION - MAJOR COLLECTOR
2009 ADT = 1150
DHV = 104
DESIGN SPEED = 50 MPH
POSTED SPEED = 55 MPH
DESIGN GUIDELINES = RURAL 3R



Expires: 11/30/2013

Kotiswaara Rao Chavva 08/22/2012



APPROVED August 22 20 12
[Signature]
COUNTY ENGINEER

APPROVED October 24 20 12
[Signature]
DISTRICT SIX ENGINEER OF LOCAL ROADS AND STREETS

APPROVED October 24 20 12
[Signature]
DISTRICT SIX ENGINEER OF CONSTRUCTION

Releasing For Bid Based on Limited Review October 24 20 12
[Signature]
DEPUTY DIRECTOR OF HIGHWAYS REGION FOUR ENGINEER

STATE OF ILLINOIS
DEPARTMENT OF TRANSPORTATION

USER NAME * #USER*	DESIGNED - JLS	REVISED -	MID-AMERICA ENGINEERING SERVICES SPRINGFIELD ILLINOIS	TITLE SHEET	SCALE: NTS	SHEET NO. 1 OF 32 SHEETS	STA. 119+00.00 TO STA. 125+62.28	F.A.S. RTE.	SECTION	COUNTY	TOTAL SHEETS	SHEET NO.
PLOT SCALE = #SCALE*	CHECKED - KRG	REVISED -						624	08-00085-00-BR	SANGAMON	32	1
PLOT DATE = #DATE*	DATE -	REVISED -						NEW CITY Rd. (CH-40)				CONTRACT NO. 93585