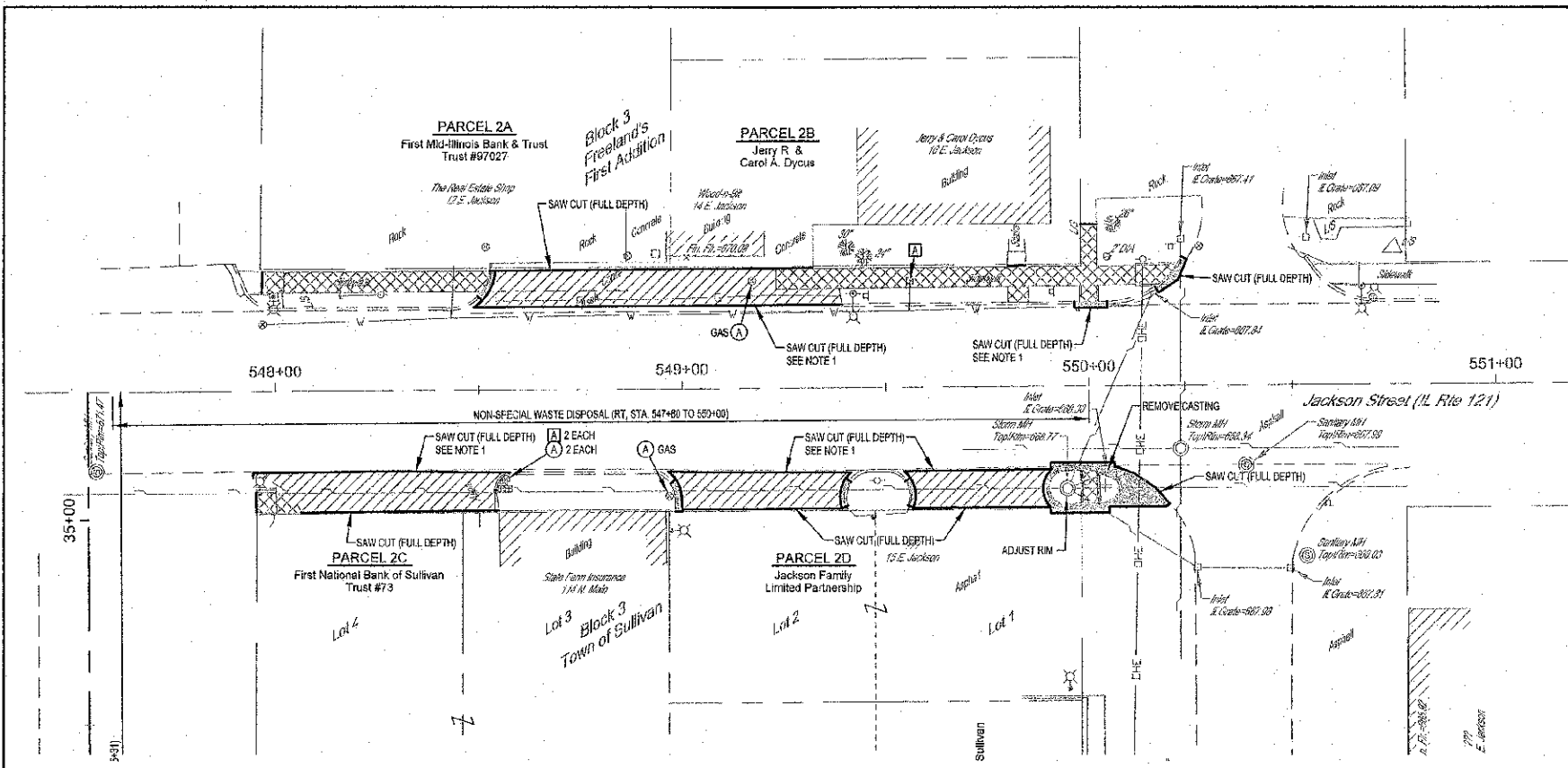


ROUTE NO.	SECTION	COUNTY	TOTAL SHEETS	SHEET NO.
	11-0303-008W	MOULTRIE	44	15
FED. ROAD DIST. NO. 7		E. JOB		FED. AID PROJECT

CONTRACT #95696



DEMOLITION NOTES

1. SAW CUTTING ALONG CURB AND GUTTER SHALL BE PERFORMED ALONG THE EDGE OF THE GUTTER FLAG OR ALONG THE BACK OF CURB.
2. ALL EXISTING LIGHT POLES TO BE REMOVED BY OTHERS UNLESS OTHERWISE NOTED.



LEGEND

- SIDEWALK REMOVAL
- PAVEMENT REMOVAL
- DRIVEWAY PAVEMENT REMOVAL
- ADJUST WATER METER PIT FRAME AND LID
- ADJUST WATER VALVE OR CURB STOP BOX LID

LOCATION	DRIVEWAY PAVEMENT REMOVAL SQ YD	SIDEWALK REMOVAL SQ FT	PAVEMENT REMOVAL SQ YD
Rt 547+94.4 to 548+57.4	57		
Rt 547+95.2 to 548+04.8		48	
Lt 548+46.8 to 549+38.3	78		
Lt 548+51.0 to 549+54.3			1
Rt 548+96.4 to 549+41.4	40		
Rt 548+98.3 to 549+98.9			2
Rt 549+39.1 to 549+40.1			1
Rt 549+54.4 to 549+90.6	33		
Rt 549+55.9 to 549+56.6			1
Lt 549+02.3 to 549+52.2		251	
Lt 549+23.3 to 550+19.8		557	
Rt 549+90.6 to 550+19.8			19
Lt 549+96.6 to 550+04.6			1
Rt 549+97.8 to 550+02.7		35	
Lt 550+17.3 to 550+24.2			2
Total	208	801	27

MILANO & GRIMMICH ENGINEERS, LLC
 114 WEST WASHINGTON
 P.O. BOX 697
 EFFINGHAM, IL 62401
 Phone: (217) 547-7262
 (217) 547-0214
 (217) 546-3632
 Web Address: www.mgeengineers.com
 Design Firm #: 164-023128

REMOVAL PLAN
JACKSON STREET
CITY OF SULLIVAN, ILLINOIS

File name: S:\DWG\1010295\dwg\Removal.dwg
 Plot date: 11/06/12 at 15:30 F.B. 669.670.671