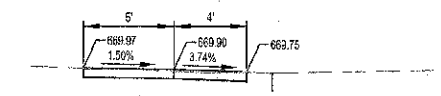
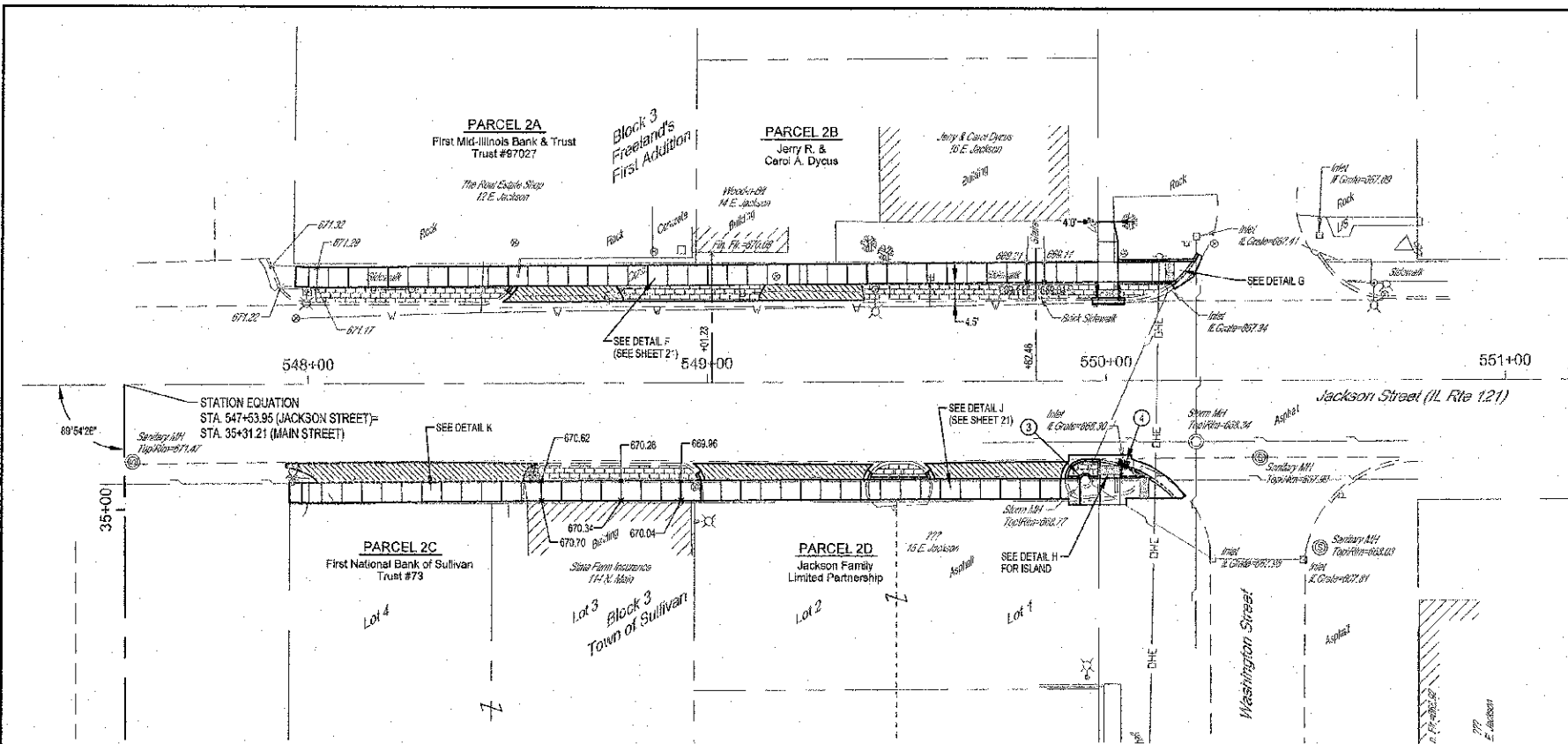
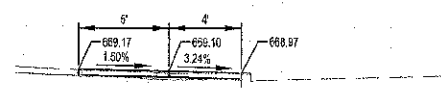


ROUTE NO.	SECTION	COUNTY	TOTAL SHEETS	SHEET NO.
11-2035-D-311		MOULTRIE	44	20
FED. ROAD DIST. NO. 7	ILLINOIS	FED. NO. PROJECT	CONTRACT #95696	



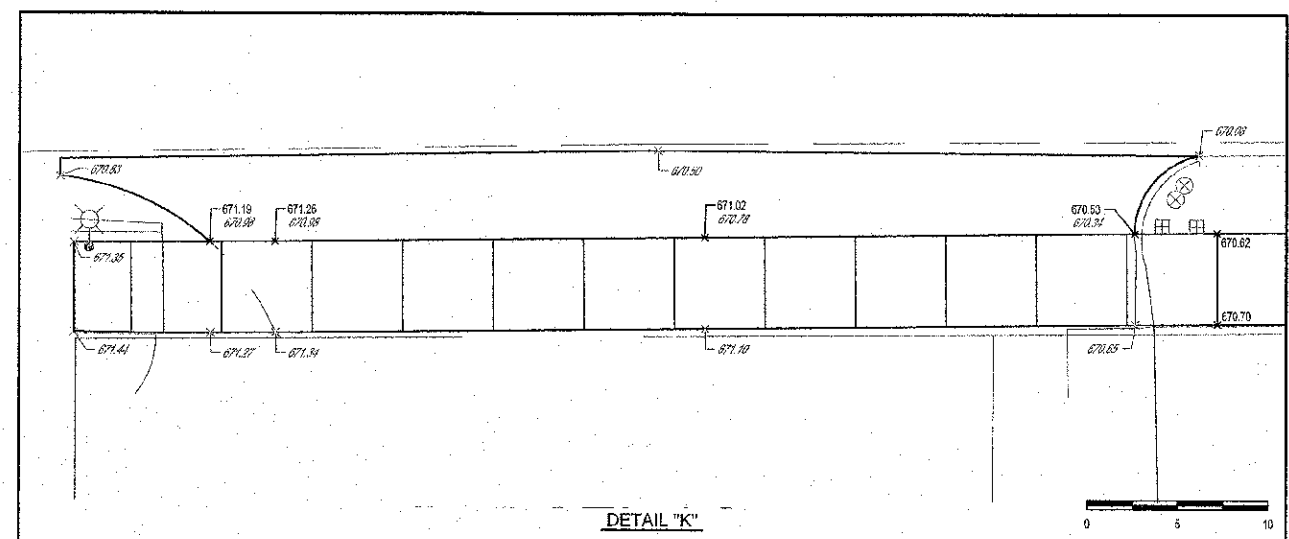
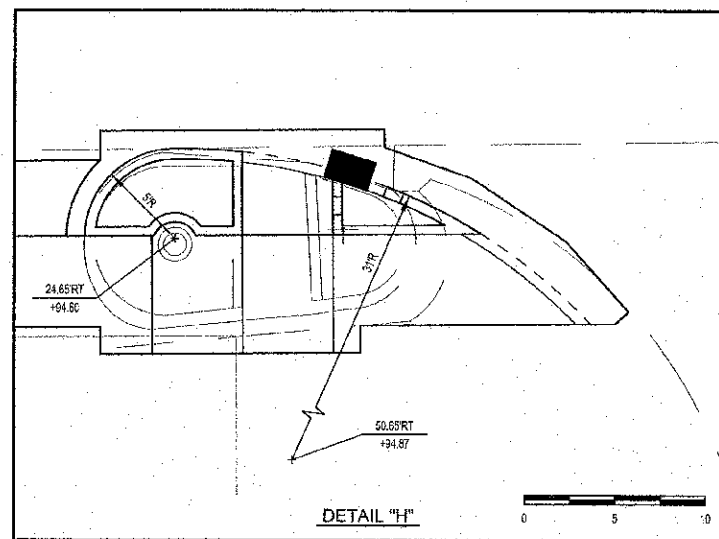
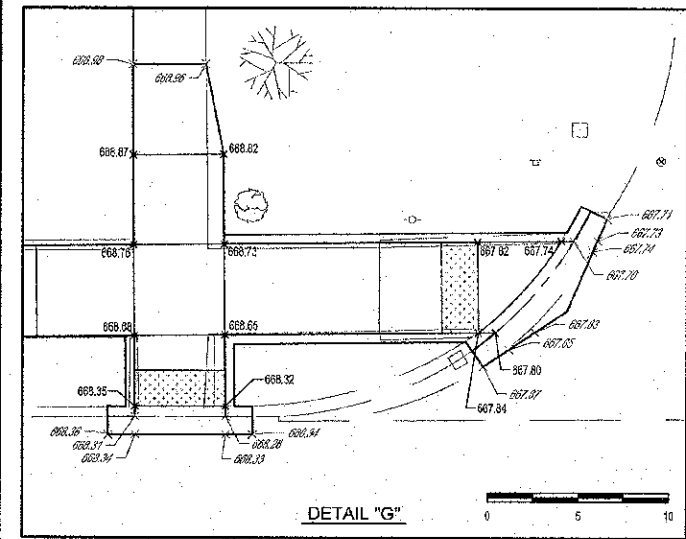
SECTION AT LT. STA. 549+01.23
Scale: 1" = 5'



SECTION AT LT. STA. 549+82.46
Scale: 1" = 5'

LEGEND

	P.C.C. SIDEWALK (SPECIAL), 4"
	P.C.C. SIDEWALK (SPECIAL), 6"
	DETECTABLE WARNING



SIDEWALK CONSTRUCTION NOTES:

1. SIDEWALK THAT HAS A RUNNING GRADE BETWEEN 6% (20:1) AND 8.33% (12:1) SHALL BE TEXTURED TO CREATE A NON-SLIP SURFACE.
2. CROSS SLOPE ON SIDEWALK SHALL NOT EXCEED 1.50%.
3. NO SIDEWALK SHALL HAVE A RUNNING GRADE EXCEEDING 0.33% (12:1).
4. EXPANSION JOINT MATERIAL SHALL BE PLACED ALONG THE EXISTING BUILDING AND FOUNDATIONS ADJACENT AND FULL DEPTH TO THE P.C.C. SIDEWALK 4 INCH.

MILANO & GRUNCH ENGINEERS, LLC
 114 WEST WASHINGTON
 P.O. BOX 687
 EFFINGHAM, ILLINOIS 69601
 Phone: 6171 387-229
 Fax: 6171 242-3453
 Web Address: www.mge-engineers.com
 Design Firm # 184-020108

SIDEWALK PLAN
 JACKSON STREET
 CITY OF SULLIVAN, ILLINOIS

File name: S:\DWG\1010295\dwg\Sidewalk.dwg
 Plot date: 11/06/12 at 15:45 F.B. 899.070.071