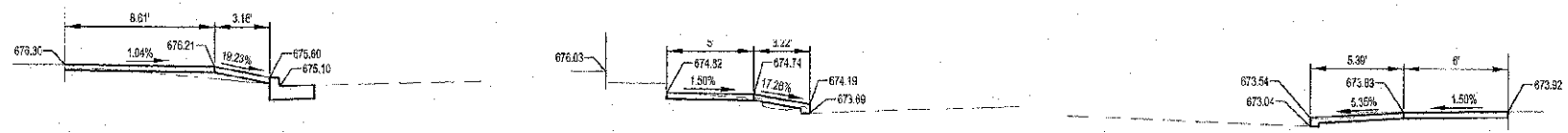
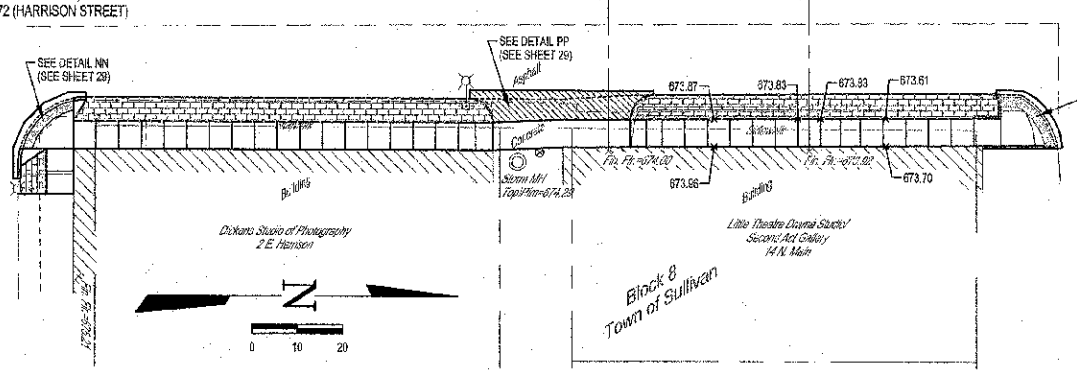
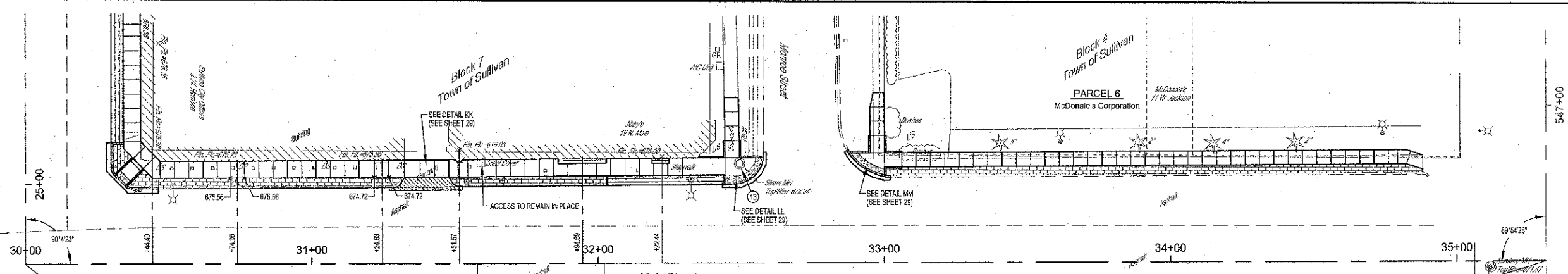


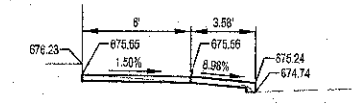
ROUTE NO.	SECTION	COUNTY	TOTAL S. SECTS.	SHEET NO.
11-00033-00-SIV		MOULTRIE	44	28
FED. ROAD DIST. NO. 7		ALIGN.	FED. AID PROJECT:	
CONTRACT #95696				



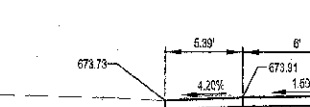
LEGEND

	P.C.C. SIDEWALK (SPECIAL), 4"
	P.C.C. SIDEWALK (SPECIAL), 6"
	DETECTABLE WARNING

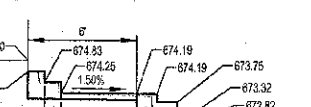
SECTION AT LT. STA. 30+44.40
Scale: 1" = 5'



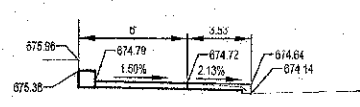
SECTION AT LT. STA. 31+51.57
Scale: 1" = 5'



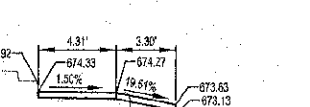
SECTION AT RT. STA. 32+02.16
Scale: 1" = 5'



SECTION AT LT. STA. 30+74.06
Scale: 1" = 5'



SECTION AT RT. STA. 31+57.86
Scale: 1" = 5'



SECTION AT LT. STA. 32+22.44
Scale: 1" = 5'



SECTION AT LT. STA. 31+24.63
Scale: 1" = 5'



SECTION AT LT. STA. 31+94.59
Scale: 1" = 5'



- SIDEWALK CONSTRUCTION NOTES:**
1. SIDEWALK THAT HAS A RUNNING GRADE BETWEEN 5% (20:1) AND 8.33% (12:1) SHALL BE TEXTURED TO CREATE A NON-SLIP SURFACE.
 2. CROSS SLOPE ON SIDEWALK SHALL NOT EXCEED 1.50%.
 3. NO SIDEWALK SHALL HAVE A RUNNING GRADE EXCEEDING 8.33% (12:1).
 4. EXPANSION JOINT MATERIAL SHALL BE PLACED ALONG THE EXISTING BUILDING AND FOUNDATIONS ADJACENT AND FULL DEPTH TO THE P.C.C. SIDEWALK 4 INCH.

MILANO & GRANLON ENGINEERS, LLC
154 WEST WASHINGTON
P.O. BOX 887
EFFINGHAM, ILLINOIS 62401
Phone: (217) 947-7552
(618) 937-2714
Fax: (217) 343-3483
Web Address: www.mgengineers.com
Design Firm # 194-009258

SIDEWALK PLAN
MAIN STREET
CITY OF SULLIVAN, ILLINOIS

File name: S:\DWG\11010295\dwg\Sidewalk.dwg
Plot date: 11/06/12 at 16:05 P.B. 885.670.871