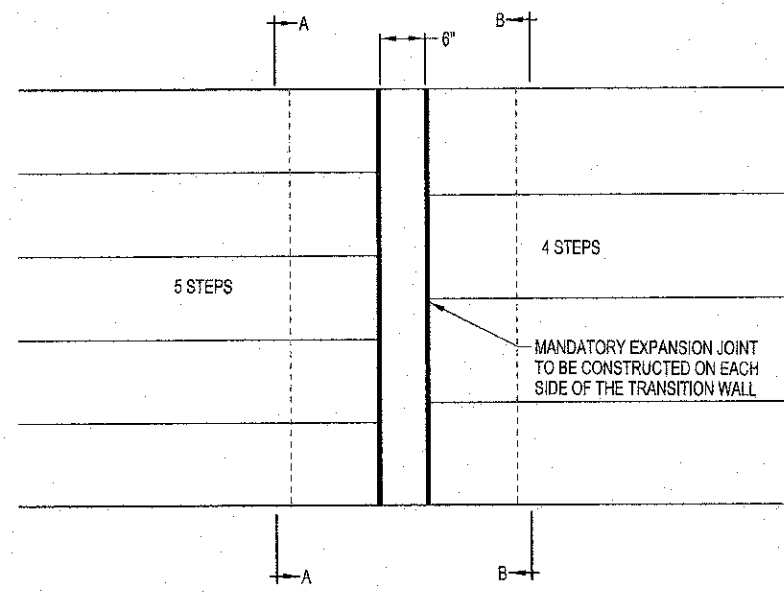
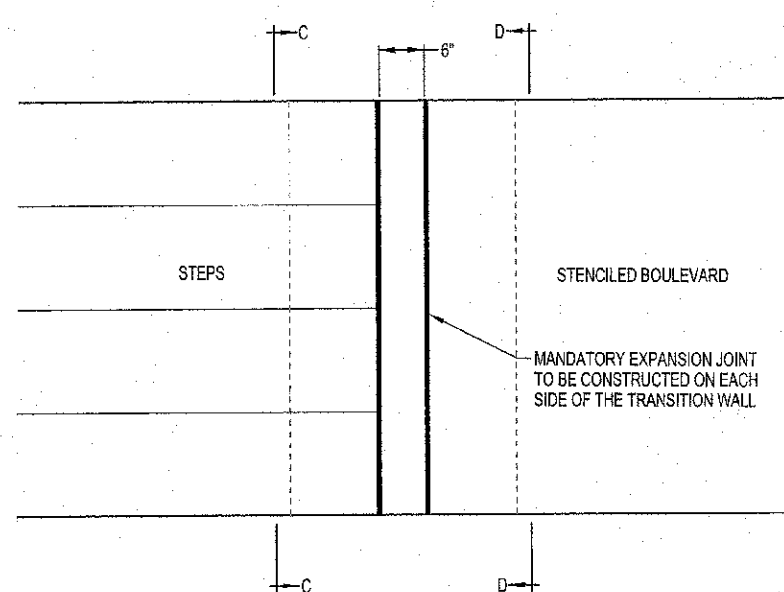


ROUTE NO.	SECTION	COUNTY	TOTAL SHEETS	SHEET NO.
11-00033-00-SW		MOULTRIE	44	30
FED. ROAD DIST. NO. 7	ILLINOIS	FED. AID PROJECT:		

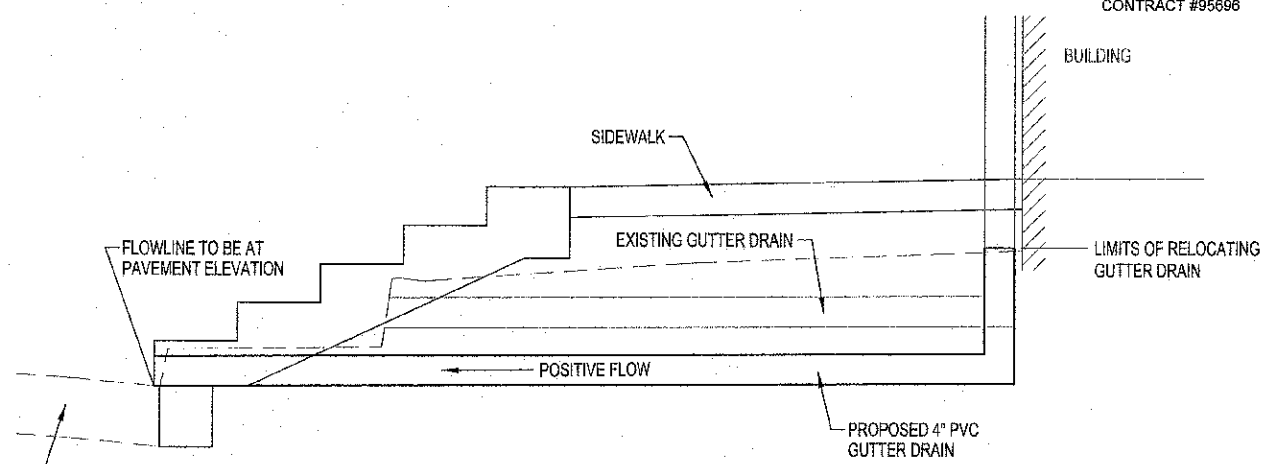
CONTRACT #95696



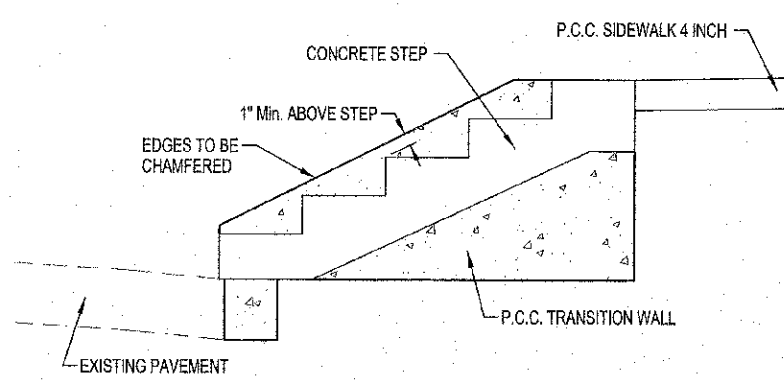
TRANSITION WALL DETAIL "A"



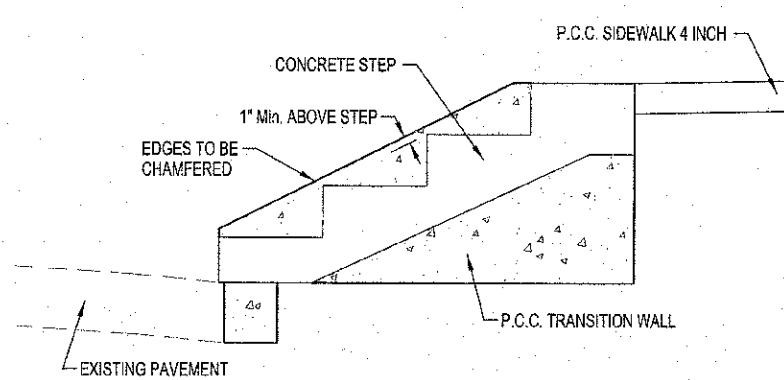
TRANSITION WALL DETAIL "B"



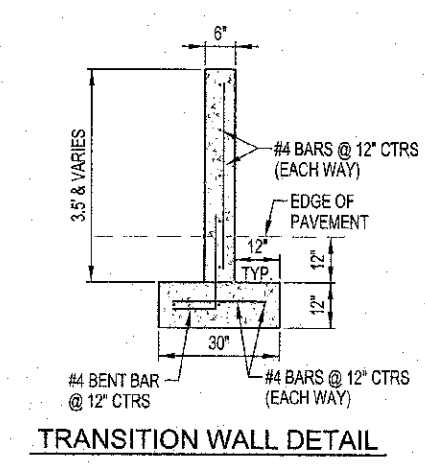
GUTTER DRAIN RELOCATION DETAIL



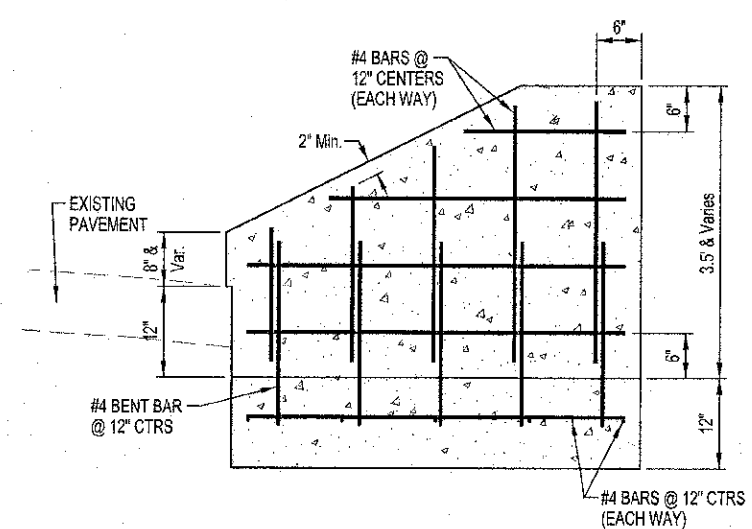
SECTION "A-A"



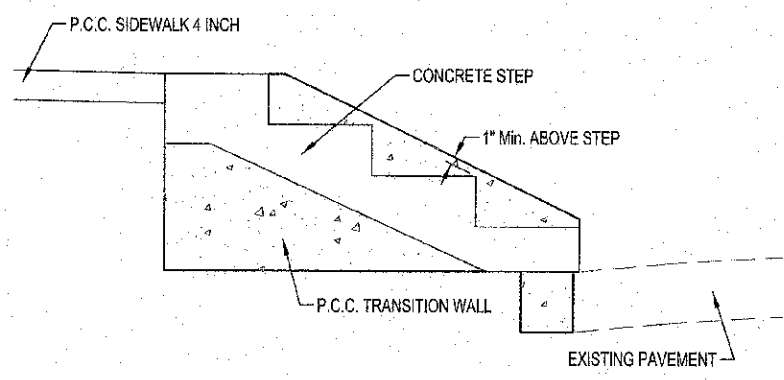
SECTION "C-C"



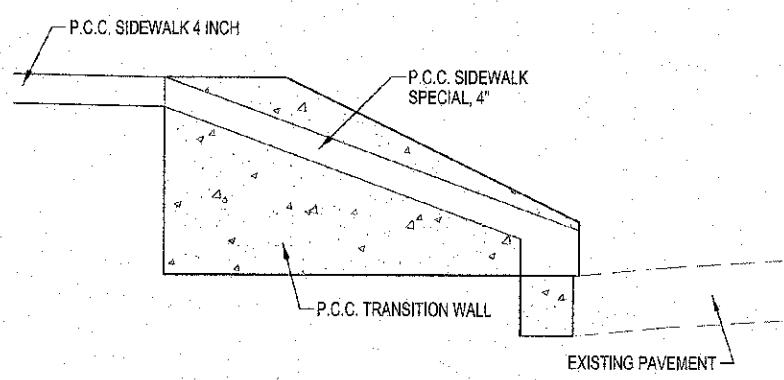
TRANSITION WALL DETAIL



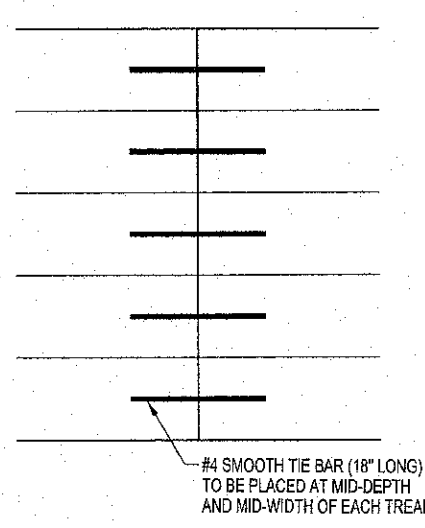
TRANSITION WALL PROFILE



SECTION "B-B"



SECTION "D-D"



CONSTRUCTION JOINT DETAIL

	MILANO & GRUNICH ENGINEERS, LLC	MISCELLANEOUS DETAILS SIDEWALK ENHANCEMENT CITY OF SULLIVAN SECTION 11-00033-00-SW MOULTRIE COUNTY, ILLINOIS
	114 WEST WASHINGTON P.O. BOX 697 EFFINGHAM, ILLINOIS 62401	
	PHONE: (618) 547-7282 (618) 577-5714 FAX: (618) 547-3433	
	File name: S:\DWG\10110295\dwg\Details.dwg Plot date: 11/06/12 at 16:16	