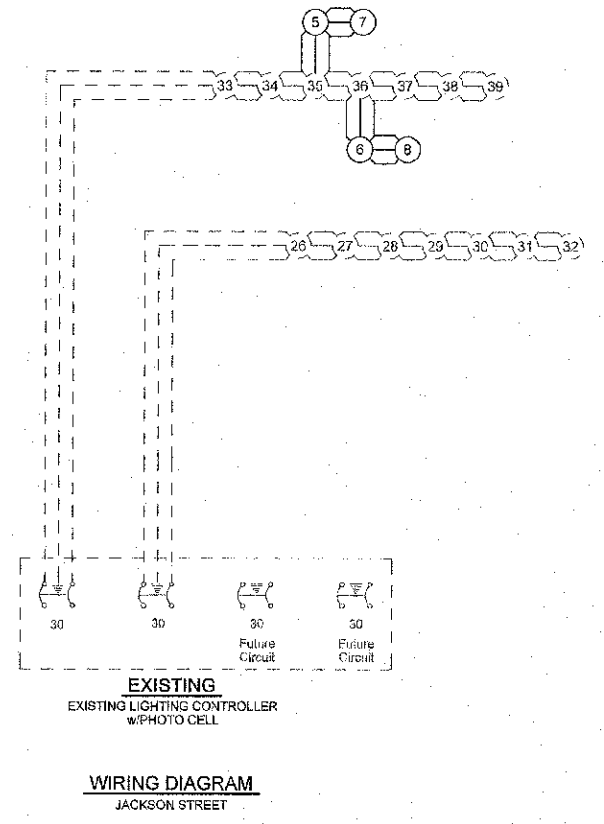


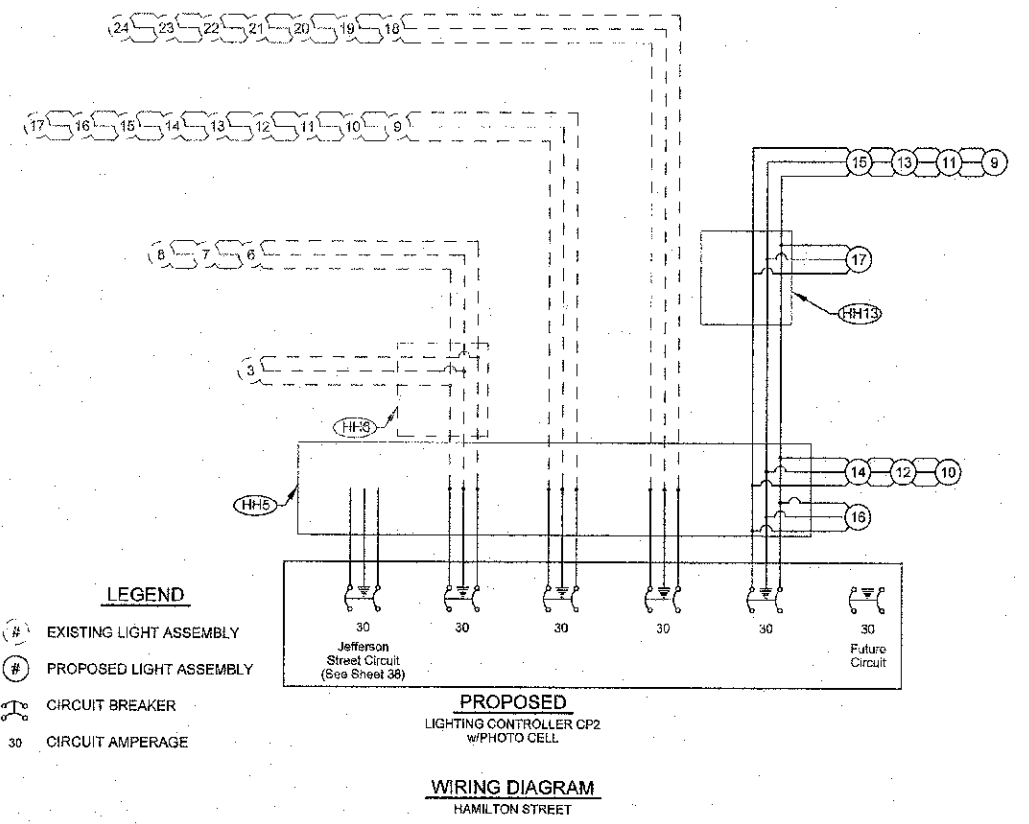
ROUTE NO.	SECTION	COUNTY	TOTAL SHEETS	SHEET NO.
	11-0033-00-SW	MOULTRIE	44	37
FED. ROAD DIST. NO. 7		ILLINOIS FED. AID PROJECT		

CONTRACT #95696

- LEGEND**
- (#) EXISTING LIGHT ASSEMBLY
  - (#) PROPOSED LIGHT ASSEMBLY
  - (C) CIRCUIT BREAKER
  - 30 CIRCUIT AMPERAGE



- LEGEND**
- (#) EXISTING LIGHT ASSEMBLY
  - (#) PROPOSED LIGHT ASSEMBLY
  - (C) CIRCUIT BREAKER
  - 30 CIRCUIT AMPERAGE



	MILANO & GRUNLICH ENGINEERS, LLC 124 WEST WALSH HOLLOW P.O. BOX 897 EFFINGHAM, ILLINOIS 62401 Phone: (217) 541-2262 (312) 677-2714 Fax: (217) 546-3433 Web Address: www.mgengr.com Design Firm # 162-20295	LIGHTING SCHEMATICS SIDEWALK ENHANCEMENT CITY OF SULLIVAN SECTION 11-00033-00-SW MOULTRIE COUNTY, ILLINOIS
	File name: S:\DWG\1010295\dwg\Lighting Detail4.dwg Plot date: 11/06/12 at 16:20	F.E. XXX