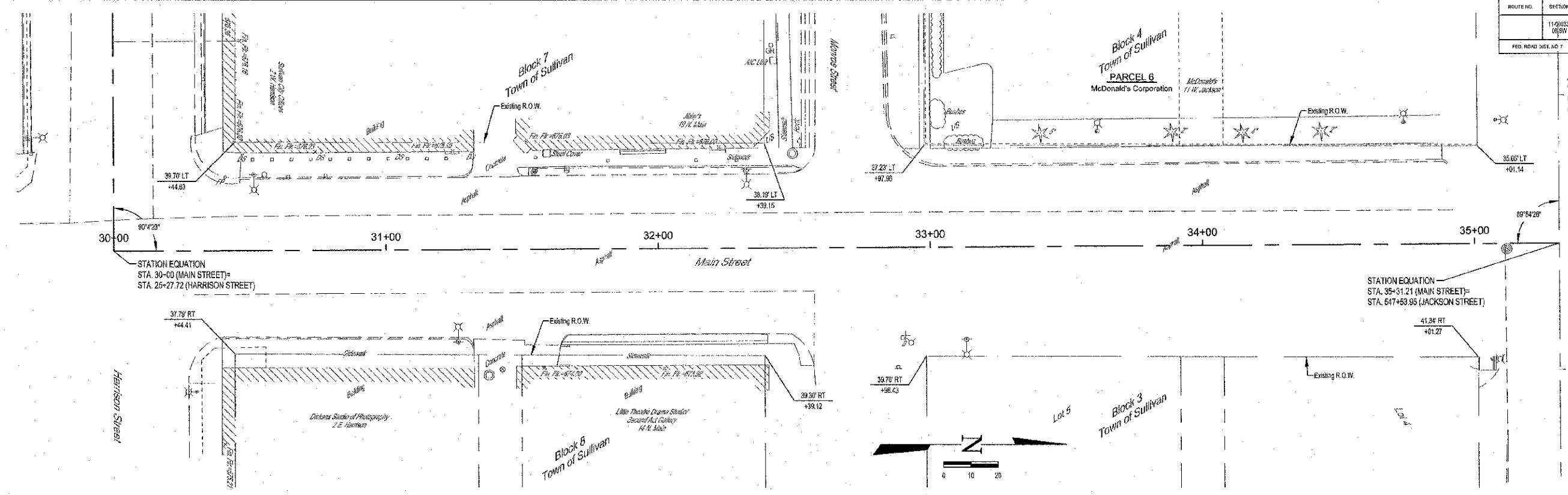


ROUTE NO.	SECTION	COUNTY	TOTAL S-SETS	SHEET NO.
	11-0033-00-SW	MOULTRIE	44	43
FED. ROAD DIST. NO. 7	ILLINOIS	FED. AID PROJECT		

CONTRACT #95696



	MILANO & GRUNLOH ENGINEERS, LLC	RIGHT-OF-WAY PLAN SIDEWALK ENHANCEMENT MAIN ST. CITY OF SULLIVAN SECTION 11-0033-00-SW MOULTRIE COUNTY, ILLINOIS
	114 WEST WASHINGTON	
	P.O. BOX 687	
	EFFINGHAM, ILL. 62420-0687	
	Phone: (217) 347-7262	
	Fax: (217) 347-2714	
	File #: (217) 342-0400	
	Web Address: www.mgengr.com	
	Design Firm #: 184-2037-08	
File name: S:\DWG\1010295\dwg\ROW Plan.dwg		
Plot date: 11/29/12 at 10:10		