

GENERAL NOTES

- ANY FACILITIES OR APPURTENANCES WHICH ARE THE PROPERTY OF ANY PUBLIC UTILITY LOCATED WITHIN THE LIMITS OF CONSTRUCTION SHALL BE RELOCATED OR ADJUSTED BY THEIR RESPECTIVE OWNERS. THE CONTRACTOR SHALL NOTIFY AND COOPERATE WITH THE OWNERS OF ANY SUCH FACILITY IN THEIR REMOVAL AND REARRANGE HIS OPERATIONS IN ORDER THAT THE UTILITY'S OPERATIONS AND THE CONSTRUCTION OF THIS PROJECT MAY PROGRESS IN A REASONABLE MANNER.
- THE TYPE, SIZE, AND LOCATION OF UTILITIES AS DELINEATED IN THESE TOPOGRAPHIC LAND SURVEY DOCUMENTS AND/OR CIVIL ENGINEERING DESIGN DOCUMENTS HAVE BEEN DETERMINED BY REVIEW OF AVAILABLE EXISTING "AS-BUILT" OR RECORD DRAWINGS; FIELD SURVEY OF J.U.L.I.E. MARKED UTILITIES; OR FIELD SURVEY OF ABOVE GROUND SURFACE UTILITY FEATURES. THE OWNER AND ENGINEER HAVE NOT UNDERTAKEN SUBSURFACE EXPLORATORY INVESTIGATIONS TO CONFIRM OR VERIFY THE UTILITIES SHOWN ON THESE DOCUMENTS, THEREFORE THEIR EXACT LOCATION, SIZE AND FUNCTION MUST BE CONSIDERED APPROXIMATE AND MUST BE FIELD CONFIRMED BY THE CONTRACTOR.
- THE ENGINEER AND OWNER FURTHER DO NOT WARRANT THAT ALL UTILITIES HAVE BEEN ILLUSTRATED ON THESE DOCUMENTS. THE CONTRACTOR IS SOLELY RESPONSIBLE FOR CONTACTING J.U.L.I.E. FOR FIELD VERIFICATION OF ALL UTILITIES ON THE SITE PRIOR TO COMMENCEMENT OF CONSTRUCTION. IF THE CONTRACTOR DETERMINES THAT SUBSTANTIAL DISCREPANCY EXISTS BETWEEN FIELD VERIFIED UTILITIES AND THESE PLANS WHICH WOULD SIGNIFICANTLY AFFECT THE FUNCTION, COST, OR PERFORMANCE OF THE PROJECT, THE CONTRACTOR SHALL IMMEDIATELY CONTACT THE ENGINEER FOR CLARIFICATION AND PROJECT DIRECTION.
- THE CONTRACTOR SHALL CONFINE HIS OPERATIONS TO THE AREA LOCATED WITHIN THE CONSTRUCTION LIMIT LINES, AS SHOWN ON PLANS. ANY AREA DISTURBED BEYOND THESE LIMITS SHALL BE RESTORED TO ITS ORIGINAL CONDITION AT THE CONTRACTOR'S EXPENSE.
- THE CONTRACTOR SHALL REMOVE, MAINTAIN IN A TEMPORARY LOCATION AND PERMANENTLY RESET ALL MAILBOXES AND TRAFFIC SIGNS WHICH INTERFERE WITH CONSTRUCTION OPERATIONS IN ACCORDANCE WITH ARTICLES 107.20 AND 107.25 OF THE "STANDARD SPECIFICATIONS FOR ROAD AND BRIDGE CONSTRUCTION". THE CONTRACTOR MUST NOTIFY THE POST OFFICE AND ALL PROPERTY OWNERS OF THE TEMPORARY LOCATION OF ALL MAILBOXES.
- TREES SHALL BE SAVED WHERE POSSIBLE. THE ENGINEER IN THE FIELD WILL VERIFY AND MARK ALL TREES REQUIRED TO BE REMOVED. SHOULD THE ENGINEER'S DECISION INCREASE OR DECREASE THE QUANTITIES OF WORK TO BE PERFORMED FROM THE PLANS, THE CONTRACTOR SHALL ACCEPT PAYMENT AS STATED IN ARTICLE 104.03 OF THE STANDARD SPECIFICATIONS. TREES OUTSIDE THE LIMITS OF CONSTRUCTION SHALL NOT BE DISTURBED UNLESS DESIGNATED BY THE ENGINEER.
- THE SAW CUTTING OF EXISTING PAVEMENT NECESSARY FOR ITS REMOVAL SHALL BE CONSIDERED INCIDENTAL TO THE COST OF THE ITEM FOR WHICH THE SAWCUT IS BEING MADE.
- IT IS THE CONTRACTOR'S RESPONSIBILITY TO ENSURE THAT ALL EROSION AND DISPLACED SEDIMENT DOES NOT MIGRATE OFF SITE. IF UNEXPECTED EROSION OR SEDIMENTATION OCCURS, OR IF THE EROSION PLAN STRUCTURES BECOME DAMAGED, THE CONTRACTOR SHALL PROVIDE SUFFICIENT MEASURES TO REPAIR, REPLACE, OR INSTALL EROSION CONTROL STRUCTURES TO ENSURE OFF-SITE DAMAGE DOES NOT OCCUR. ANY SEDIMENT OR EROSION DAMAGE WHICH OCCURS OFF-SITE SHALL BE REPAIRED BY THE CONTRACTOR AT HIS EXPENSE.
- THE RESIDENT ENGINEER WILL FIELD LOCATE ALL SILT FENCE, STRAW BALE DITCH CHECKS, RIP-RAP DITCHES AND DITCH CHECKS.







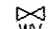






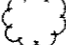

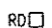
10. ALL EARTH SURFACES DISTURBED BY CONSTRUCTION OR AS DIRECTED BY THE ENGINEER SHALL BE SEEDED.

SEEDING CL 1
MULCH METHOD 2
NITROGEN FERTILIZER NUTRIENT
PHOSPHORUS FERTILIZER NUTRIENT
POTASSIUM FERTILIZER NUTRIENT

SEEDING DATES: FALL: AUG. 16 - DEC. 31
SPRING: JAN. 1 - MAY 31
NO SEEDING SHALL BE DONE BETWEEN
JUNE 1 - AUG. 15.

- IT IS INTENDED THAT ANY CULVERTS DAMAGED BY OR REMOVED BY THE CONTRACTOR OTHER THAN THOSE NOTED ON THE PLANS TO BE REMOVED WILL HAVE TO BE REMOVED AND/OR REPLACED AT THE CONTRACTOR'S SOLE EXPENSE.
- ALL MATERIALS SUCH AS FRAMES AND GRATES AND STORM SEWER PIPE SCHEDULED FOR REMOVAL THAT ARE CONSIDERED TO BE SUITABLE FOR FUTURE USE, SHALL BE SALVAGED AND STOCKPILED AS DIRECTED BY THE ENGINEER. ALL OTHER MATERIALS SCHEDULED FOR REMOVAL BUT NOT SALVAGED, SHALL BE DISPOSED OF BY THE CONTRACTOR AT HIS EXPENSE.
- ALL STORM SEWER AND CULVERT PIPE TO BE REMOVED WHICH THE ENGINEER DEEMS FIT FOR RE-USE SHALL BE SALVAGED IN ACCORDANCE WITH ARTICLES 501.02 OF THE IDOT STANDARD SPECIFICATIONS FOR ROAD AND BRIDGE CONSTRUCTION. ALL OTHER STORM SEWER AND CULVERT PIPE SHALL BE DISPOSED OF IN ACCORDANCE WITH ARTICLE 202.03.
- ALL EXCAVATION ADJACENT TO THE EDGE OF PAVEMENT SHALL BE PROTECTED WITH EXTENDED LEG BARRICADES WITH APPROPRIATE LIGHTING.
- TRAFFIC CONTROL SIGNS SHALL BE 48" FLUORESCENT ORANGE.
- THE CONTRACTOR IS RESPONSIBLE FOR CONTACTING THE VILLAGE OF FREEBURG AT LEAST FORTY-EIGHT (48) HOURS IN ADVANCE PRIOR TO COMMENCEMENT OF ANY CONSTRUCTION ACTIVITIES OR WORK REQUIRING INSPECTION OR APPROVAL BY THE AFFECTED UNITS OF GOVERNMENT.

LEGEND

| | | | | | |
|--|-----|-----|-----------------------|---|-----------------------|
| --- | OHE | --- | OVERHEAD ELECTRIC |  | ELECTRIC UTILITY POLE |
| --- | STM | --- | STORM SEWER |  | LIGHT STANDARD |
| --- | UT | --- | UNDERGROUND TELEPHONE |  | TELEPHONE RISER |
| --- | W | --- | WATER |  | ROAD SIGN |
| --- | G | --- | GAS |  | STOP SIGN |
| --- | SAN | --- | SANITARY SEWER |  | WATER METER |
| --- | X | --- | FENCE |  | WATER VALVE |
|  | | | CONIFEROUS TREE |  | WATER HYDRANT |
|  | | | DECIDUOUS TREE |  | SANITARY MANHOLE |
|  | | | TREE LINE |  | GAS METER |
|  | | | SHRUB |  | MAILBOX |
| | | | |  | ROOF DRAIN |

THOUVENOT,
WADE &
MOERCHEN, INC.
ENGINEERS • SURVEYORS • PLANNERS



CORPORATE OFFICE
4940 OLD COLLINSVILLE RD.
SWANSEA, ILLINOIS 62226
TEL (618) 624-4488
FAX (618) 624-6688
corp@twm-inc.com

WATERLOO OFFICE
113 SOUTH MAIN STREET
WATERLOO, ILLINOIS 62298
TEL (618) 939-5050
FAX (618) 939-3938
waterloo@twm-inc.com

EDWARDSVILLE OFFICE
10158 CENTURY DRIVE
EDWARDSVILLE, ILLINOIS 62025
TEL (618) 656-4040
FAX (618) 656-4343
edwardsville@twm-inc.com

ST. CHARLES OFFICE
400 N. 5TH STREET, SUITE 101
ST. CHARLES, MISSOURI 63301
TEL (636) 724-8300
FAX (636) 724-8304
stlouis@twm-inc.com

| PROFESSIONAL REGISTRATIONS | LICENSE NO. |
|-------------------------------------|-------------|
| ILLINOIS PROFESSIONAL DESIGN FIRM | 184-001220 |
| PROFESSIONAL ENGINEERING CORP. | 62-035370 |
| PROFESSIONAL STRUCTURAL ENGR. CORP. | 61-005202 |
| ILLINOIS PROF. LAND SURVEYING CORP. | 049-000029 |
| MISSOURI PROFESSIONAL ENGR. CORP. | MC 001520 |
| MISSOURI LAND SURVEYING CORP. | MC 000346 |

SEAL

Signature: _____
Expiration Date: _____
STATEMENT OF RESPONSIBILITY
I hereby confirm that the document herein to be authorized by my seal is restricted to this sheet, and I hereby disclaim any responsibility for all other drawings, specifications, estimates, reports or other documents or instruments relating to or intended to be utilized for any other part of the architectural, engineering or survey project.

TITLE: SECTION 10-00023-00-SW
GENERAL NOTES
AND LEGEND
PROJECT: SAFE ROUTES TO SCHOOL
SIDEWALK IMPROVEMENTS
VILLAGE OF FREEBURG
ST. CLAIR COUNTY, ILLINOIS

| REV. | DATE | DESCRIPTION |
|------|------|-------------|
| △ | | |
| △ | | |
| △ | | |

| | |
|---|---|
| DRAWN BY: LEM | SHEET |
| DESIGNED BY: MJM | 2 |
| CHECKED BY: | OF 17 SHEETS |
| APPROVED BY: | PROJECT DESCRIPTION |
| PROJECT NUMBER: 001100115 | GENERAL NOTES |
| <input type="checkbox"/> ISSUED FOR REVIEW | <input type="checkbox"/> ISSUED FOR BIDDING |
| <input type="checkbox"/> ISSUED FOR CONSTR. | <input type="checkbox"/> RECORD DRAWING |

THOUVENOT, WADE & MOERCHEN, INC.
ENGINEERS ♦ SURVEYORS ♦ PLANNERS



CORPORATE OFFICE
4940 OLD COLLINSVILLE RD.
SWANSEA, ILLINOIS 62226
TEL (618) 624-4488
FAX (618) 624-6688
corp@twm-inc.com

WATERLOO OFFICE
113 SOUTH MAIN STREET
WATERLOO, ILLINOIS 62298
TEL (618) 939-5050
FAX (618) 939-3938
waterloo@twm-inc.com

EDWARDSVILLE OFFICE
1015B CENTURY DRIVE
EDWARDSVILLE, ILLINOIS 62025
TEL (618) 656-4040
FAX (618) 656-4343
edwardsville@twm-inc.com

ST. CHARLES OFFICE
400 N. 5TH STREET, SUITE 101
ST. CHARLES, MISSOURI 63301
TEL (636) 724-8300
FAX (636) 724-8304
stlouis@twm-inc.com

| PROFESSIONAL REGISTRATIONS | LICENSE NO. |
|-------------------------------------|-------------|
| ILLINOIS PROFESSIONAL DESIGN FIRM | 164-001220 |
| PROFESSIONAL ENGINEERING CORP. | 62-035370 |
| PROFESSIONAL STRUCTURAL ENGR. CORP. | 61-065902 |
| ILLINOIS PROF. LAND SURVEYING CORP. | 048-000029 |
| MISSOURI PROFESSIONAL ENGR. CORP. | MC 001528 |
| MISSOURI LAND SURVEYING CORP. | MC 000346 |

SEAL

Signature: _____
Expiration Date: _____

STATEMENT OF RESPONSIBILITY
I hereby confirm that the document herein to be authenticated by my seal is restricted to this sheet, and I hereby disclaim any responsibility for all other drawings, specifications, estimates, reports or other documents or instruments relating to or intended to be utilized for any other part of the architectural, engineering or survey project.

TITLE: SECTION 10-00023-00-SW SUMMARY OF QUANTITIES

PROJECT: SAFE ROUTES TO SCHOOL SIDEWALK IMPROVEMENTS VILLAGE OF FREEBURG ST. CLAIR COUNTY, ILLINOIS

| REV | DATE | DESCRIPTION |
|-----|------|-------------|
| △ | | |
| △ | | |
| △ | | |

| | |
|---|---|
| DRAWN BY: LEM | SHEET |
| DESIGNED BY: MJM | 3 |
| CHECKED BY: | OF 17 SHEETS |
| APPROVED BY: | PROJECT DESCRIPTION |
| PROJECT NUMBER: D01100115 | SUMMARY OF QUANTITIES |
| <input checked="" type="checkbox"/> ISSUED FOR REVIEW | <input type="checkbox"/> ISSUED FOR BIDDING |
| <input type="checkbox"/> ISSUED FOR CONSTR. | <input type="checkbox"/> RECORD DRAWINGS |

SUMMARY OF QUANTITIES

| CODE NO | ITEM | UNIT | TOTAL | ROADWAY | TRAFFIC SIGN |
|------------|---|---------|-------|---------|--------------|
| 20200100 | EARTH EXCAVATION | CU YD | 220 | 220 | |
| 20400800 | FURNISHED EXCAVATION | CU YD | 140 | 140 | |
| 20800150 | TRENCH BACKFILL | CU YD | 20 | 20 | |
| 21400100 | GRADING AND SHAPING DITCHES | FOOT | 250 | 250 | |
| 25000100 | SEEDING, CLASS 1 | ACRE | 0.5 | 0.5 | |
| 25000400 | NITROGEN FERTILIZER NUTRIENT | POUND | 50 | 50 | |
| 25000500 | PHOSPHORUS FERTILIZER NUTRIENT | POUND | 50 | 50 | |
| 25000600 | POTASSIUM FERTILIZER NUTRIENT | POUND | 50 | 50 | |
| 25100115 | MULCH, METHOD 2 | ACRE | 0.5 | 0.5 | |
| 28000250 | TEMPORARY EROSION CONTROL SEEDING | POUND | 50 | 50 | |
| 28000305 | TEMPORARY DITCH CHECKS | FOOT | 20 | 20 | |
| 31100300 | SUB-BASE GRANULAR MATERIAL, TYPE A 4" | SQ YD | 558 | 558 | |
| 35100110 | AGGREGATE BASE COURSE, TYPE A | CU YD | 3 | 3 | |
| 40200200 | AGGREGATE SURFACE COURSE, TYPE A | CU YD | 7 | 7 | |
| 40201000 | AGGREGATE FOR TEMPORARY ACCESS | TON | 25 | 25 | |
| 40800020 | BITUMINOUS MATERIALS (PRIME COAT) | TON | 0.2 | 0.2 | |
| 40800050 | INCIDENTAL HOT-MIX ASPHALT SURFACING | TON | 17.5 | 17.5 | |
| 42300200 | PORTLAND CEMENT CONCRETE DRIVEWAY PAVEMENT, 6 INCH | SQ. YD. | 64 | 64 | |
| 42400100 | PORTLAND CEMENT CONCRETE SIDEWALK 4 INCH | SQ FT | 5022 | 5022 | |
| 42400800 | DETECTABLE WARNINGS | SQ. FT. | 48 | 48 | |
| 44000100 | PAVEMENT REMOVAL | SQ YD | 31.8 | 31.8 | |
| 44000200 | DRIVEWAY PAVEMENT REMOVAL | SQ YD | 107 | 107 | |
| 44000500 | COMBINATION CURB AND GUTTER REMOVAL | FOOT | 48 | 48 | |
| 50102400 | CONCRETE REMOVAL | CU YD | 55 | 55 | |
| 54001001 | BOX CULVERT END SECTION, CULVERT NO. 1 | EACH | 1 | 1 | |
| 54010402 | PRECAST CONCRETE BOX CULVERTS 4' X 2' | FOOT | 511 | 511 | |
| 54215550 | METAL END SECTIONS 15" | EACH | 1 | 1 | |
| 55100700 | STORM SEWER REMOVAL 15" | FOOT | 24 | 24 | |
| 55101400 | STORM SEWER REMOVAL 30" | FOOT | 75 | 75 | |
| 60105000 | PIPE DRAINS, CORRUGATED STEEL OR ALUMINUM ALLOY 12" | FOOT | 6 | 6 | |
| 60105100 | PIPE DRAINS, CORRUGATED STEEL OR ALUMINUM ALLOY 15" | FOOT | 28 | 28 | |
| 60619200 | CONCRETE MEDIAN, TYPE SB-6.06 | SQ FT | 285.5 | 285.5 | |
| 61140200 | STORM SEWERS (SPECIAL), 12" | FOOT | 6 | 6 | |
| 67100100 | MOBILIZATION | L SUM | 1 | 1 | |
| 70102620 | TRAFFIC CONTROL AND PROTECTION, STANDARD 701501 | L SUM | 1 | 1 | |
| 70102640 | TRAFFIC CONTROL AND PROTECTION, STANDARD 701801 | L SUM | 1 | 1 | |
| 72000100 | SIGN PANEL - TYPE 1 | SQ FT | 1.5 | | 1.5 |
| * 78000400 | THERMOPLASTIC PAVEMENT MARKING - LINE 6" | FOOT | 142 | 142 | |
| * 78000600 | THERMOPLASTIC PAVEMENT MARKING - LINE 12" | FOOT | 15 | 15 | |
| 78300100 | PAVEMENT MARKING REMOVAL | SQ FT | 21 | 21 | |

SUMMARY OF QUANTITIES

| CODE NO | ITEM | UNIT | TOTAL QUANTITY | ROADWAY | TRAFFIC SIGN |
|------------|---|--------|----------------|---------|--------------|
| * 87301215 | ELECTRIC CABLE IN CONDUIT, SIGNAL NO. 14 2C | FOOT | 178.5 | | 178.5 |
| * 87301225 | ELECTRIC CABLE IN CONDUIT, SIGNAL NO. 14 3C | FOOT | 192.5 | | 192.5 |
| * 88102810 | PEDESTRIAN SIGNAL HEAD, POLYCARBONATE, LED, 1-FACE, BRACKET MOUNTED | EACH | 2 | | 2 |
| * 88800100 | PEDESTRIAN PUSH-BUTTON | EACH | 2 | | 2 |
| * 89502200 | MODIFY EXISTING CONTROLLER | EACH | 1 | | 1 |
| * 89502350 | REMOVE AND REINSTALL ELECTRIC CABLE FROM CONDUIT | FOOT | 1546 | | 1546 |
| Z0076870 | UNDERDRAIN CONNECTION TO STRUCTURE | EACH | 1 | 1 | |
| X0301339 | REMOVE EXISTING PARKING BLOCKS | EACH | 4 | 4 | |
| * X0320239 | CONCRETE WALL REMOVAL | FOOT | 143 | 143 | |
| X0322936 | REMOVE EXISTING FLARED END SECTION | EACH | 1 | 1 | |
| X0323265 | REMOVE EXISTING RIPRAP | SQ YD | 51 | 51 | |
| X8024242 | INLETS, SPECIAL NO. 1 | EACH | 4 | 4 | |
| △ 20076600 | TRAINEES | HOURLY | 500 | | |
| X6024244 | INLETS, SPECIAL NO. 2 | EACH | 3 | 3 | |
| △ 20076604 | TRAINEE'S TRAINING PROGRAM GRADUATE | HOURLY | 500 | | |
| * Z0036200 | PAINT CURB | FOOT | 67 | 67 | |

*DENOTES SPECIALTY ITEM

△ = ØØ42

**THOUVENOT,
WADE &
MOERCHEN, INC.**
ENGINEERS • SURVEYORS • PLANNERS



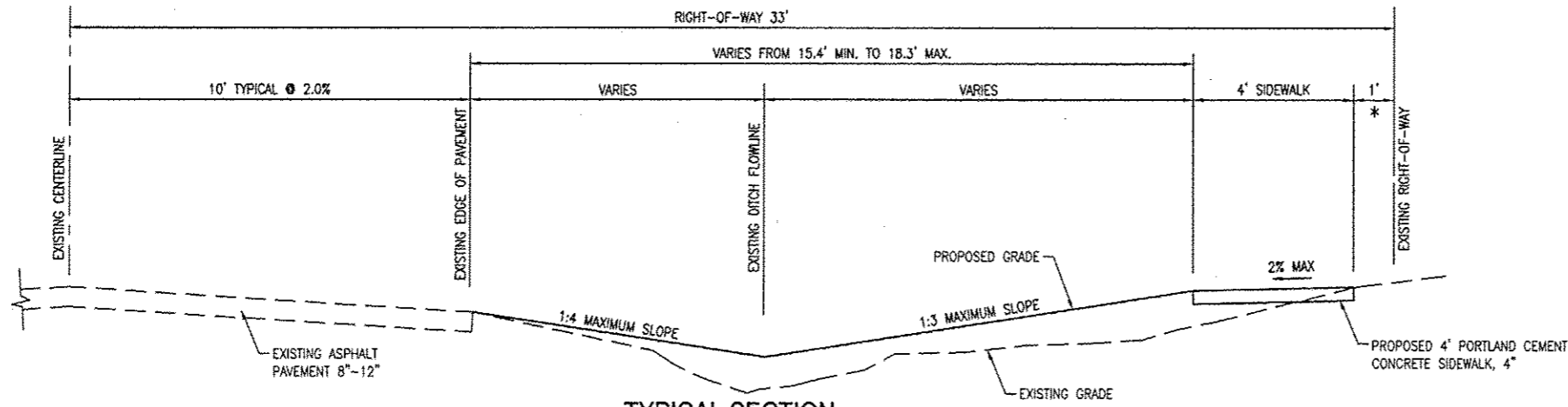
- CORPORATE OFFICE**
4940 OLD COLLINSVILLE RD.
SWANSEA, ILLINOIS 62226
TEL (618) 624-4488
FAX (618) 624-6688
corp@twm-inc.com
- WATERLOO OFFICE**
113 SOUTH MAIN STREET
WATERLOO, ILLINOIS 62298
TEL (618) 939-5050
FAX (618) 939-3938
waterloo@twm-inc.com
- EDWARDSVILLE OFFICE**
1015B CENTURY DRIVE
EDWARDSVILLE, ILLINOIS 62025
TEL (618) 656-4040
FAX (618) 656-4343
edwardsville@twm-inc.com
- ST. CHARLES OFFICE**
400 N. 5TH STREET, SUITE 101
ST. CHARLES, MISSOURI 63301
TEL (636) 724-8300
FAX (636) 724-8304
stlouis@twm-inc.com

| PROFESSIONAL REGISTRATIONS | LICENSE NO. |
|-------------------------------------|-------------|
| ILLINOIS PROFESSIONAL DESIGN FIRM | 184-001220 |
| PROFESSIONAL ENGINEERING CORP. | 62-035370 |
| PROFESSIONAL STRUCTURAL ENGR. CORP. | 81-005202 |
| ILLINOIS PROF. LAND SURVEYING CORP. | 048-000029 |
| MISSOURI PROFESSIONAL ENGR. CORP. | HC 001528 |
| MISSOURI LAND SURVEYING CORP. | HC 000346 |

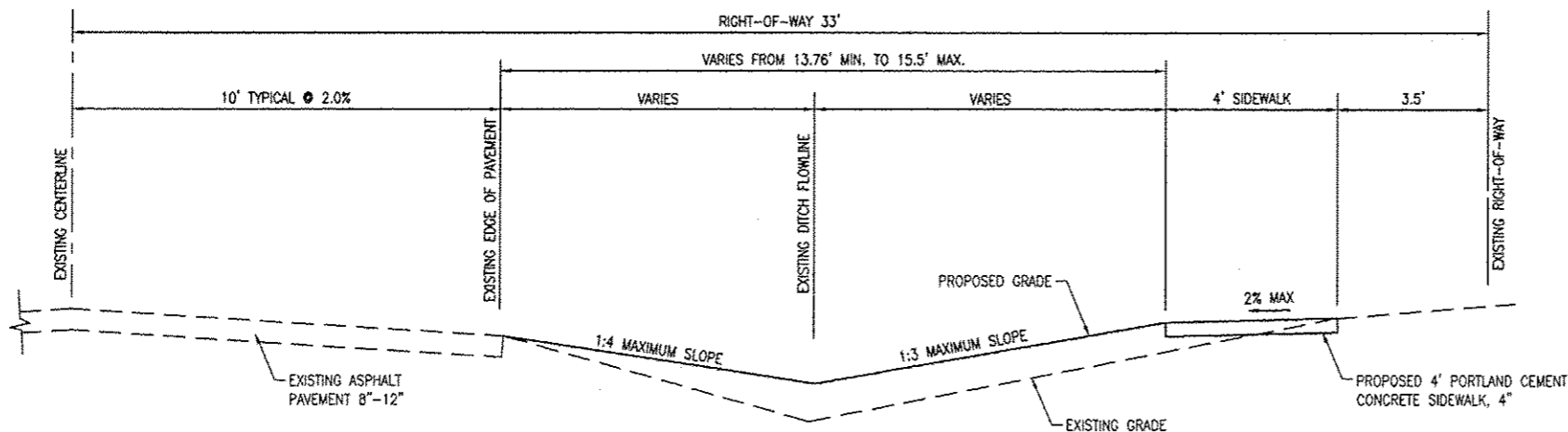
SEAL

Signature: _____
Signature Date: _____
Expiration Date: _____

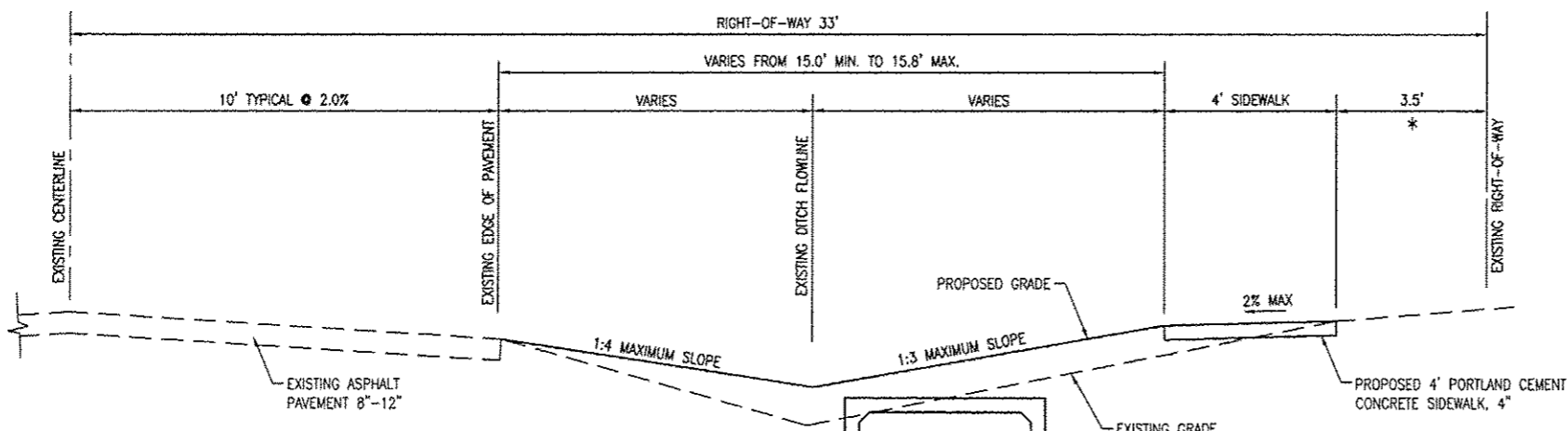
STATEMENT OF RESPONSIBILITY
I hereby confirm that the document herein to be authenticated by my seal is restricted to this sheet, and I hereby disclaim any responsibility for all other drawings, specifications, estimates, reports or other documents or instruments relating to or intended to be utilized for any other part of the architectural, engineering or survey project.



TYPICAL SECTION
STA: 10+00 TO STA: 13+24.97
* DISTANCE BETWEEN EDGE OF SIDEWALK AND R.O.W.
VARIES FROM 1.0' TO 3.5' FROM STA: 12+92.52 TO STA: 13+24.97



TYPICAL SECTION
STA: 13+24.97 TO STA: 18+45.02



TYPICAL SECTION
STA: 18+45.02 TO STA: 20+14.94
* DISTANCE BETWEEN EDGE OF SIDEWALK AND R.O.W.
VARIES FROM 3.5' TO 5.0' FROM STA: 18+89.53 TO STA: 20+14.94

TITLE: SECTION 10-00023-00-SW TYPICAL SECTIONS

PROJECT: SAFE ROUTES TO SCHOOL SIDEWALK IMPROVEMENTS VILLAGE OF FREEBURG ST. CLAIR COUNTY, ILLINOIS

| REV. | DATE | DESCRIPTION |
|------|------|-------------|
| △ | | |
| △ | | |
| △ | | |

| | |
|---|---|
| DRAWN BY: LEM | SHEET |
| DESIGNED BY: M/JM | 4 |
| CHECKED BY: | OF 17 SHEETS |
| APPROVED BY: | PROJECT DESCRIPTION |
| PROJECT NUMBER: D01100115 | TYPICAL SECTIONS |
| <input checked="" type="checkbox"/> ISSUED FOR REVIEW | <input type="checkbox"/> ISSUED FOR BIDDING |
| <input type="checkbox"/> ISSUED FOR CONSTR. | <input type="checkbox"/> RECORD DRAWINGS |

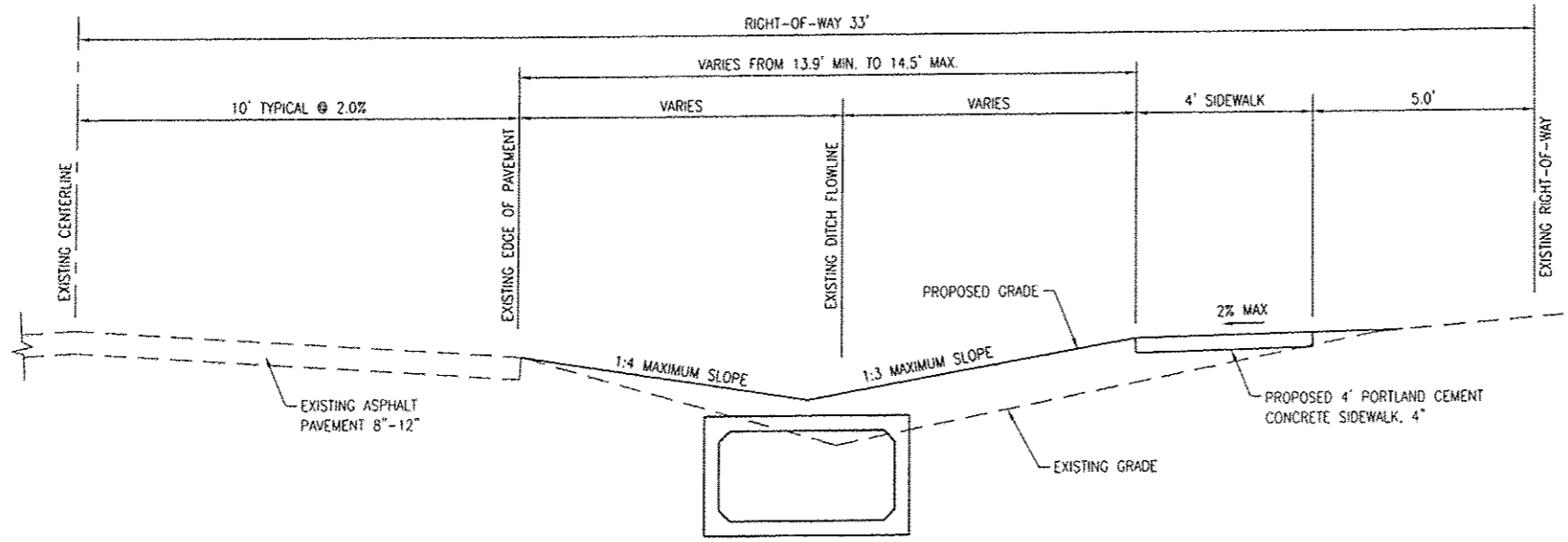


- CORPORATE OFFICE**
4940 OLD COLLINGSVILLE RD.
SWANSEA, ILLINOIS 62226
TEL (618) 624-4488
FAX (618) 624-6688
corp@twm-inc.com
- WATERLOO OFFICE**
113 SOUTH MAIN STREET
WATERLOO, ILLINOIS 62298
TEL (618) 939-5050
FAX (618) 939-3938
waterloo@twm-inc.com
- EDWARDSVILLE OFFICE**
1015B CENTURY DRIVE
EDWARDSVILLE, ILLINOIS 62025
TEL (618) 656-4040
FAX (618) 656-4343
edwardsville@twm-inc.com
- ST. CHARLES OFFICE**
400 N. 5TH STREET, SUITE 101
ST. CHARLES, MISSOURI 63301
TEL (636) 724-8300
FAX (636) 724-8304
stlouis@twm-inc.com

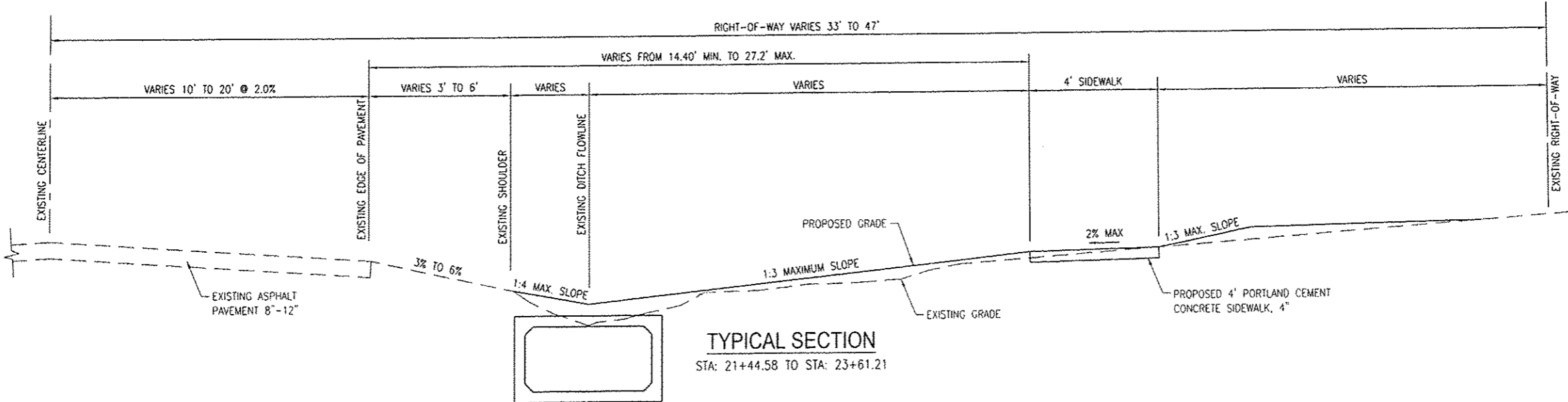
| PROFESSIONAL REGISTRATIONS | LICENSE NO. |
|-------------------------------------|-------------|
| ILLINOIS PROFESSIONAL DESIGN FIRM | 184-001270 |
| PROFESSIONAL ENGINEERING CORP. | 62-033370 |
| PROFESSIONAL STRUCTURAL ENGR. CORP. | 81-005202 |
| ILLINOIS PROF. LAND SURVEYING CORP. | 048-000229 |
| MISSOURI PROFESSIONAL ENGR. CORP. | HC 001528 |
| MISSOURI LAND SURVEYING CORP. | HC 000346 |

Signature: _____
Signature Date: _____
Expiration Date: _____

STATEMENT OF RESPONSIBILITY
I hereby confirm that the document herein to be authenticated by my seal is restricted to this sheet, and I hereby disclaim any responsibility for all other drawings, specifications, estimates, reports or other documents or instruments relating to or intended to be utilized for any other part of the architectural, engineering or survey project.



TYPICAL SECTION
STA: 20+14.94 TO STA: 21+44.58



TYPICAL SECTION
STA: 21+44.58 TO STA: 23+61.21

SECTION 10-00023-00-SW
TYPICAL SECTIONS

PROJECT:
SAFE ROUTES TO SCHOOL
SIDEWALK IMPROVEMENTS
VILLAGE OF FREEBURG
ST. CLAIR COUNTY, ILLINOIS

| REV | DATE | DESCRIPTION |
|-----|------|-------------|
| △ | | |
| △ | | |
| △ | | |

| | |
|---|---|
| DRAWN BY: LEM | SHEET |
| DESIGNED BY: MUM | 5 |
| CHECKED BY: | OF 17 SHEETS |
| APPROVED BY: | PROJECT DESCRIPTION |
| PROJECT NUMBER: 001100115 | TYPICAL SECTIONS |
| <input checked="" type="checkbox"/> ISSUED FOR REVIEW | <input type="checkbox"/> ISSUED FOR BIDDING |
| <input type="checkbox"/> ISSUED FOR CONSTR. | <input type="checkbox"/> RECORD DRAWING |

THOUVENOT, WADE & MOERCHEN, INC.
ENGINEERS ♦ SURVEYORS ♦ PLANNERS



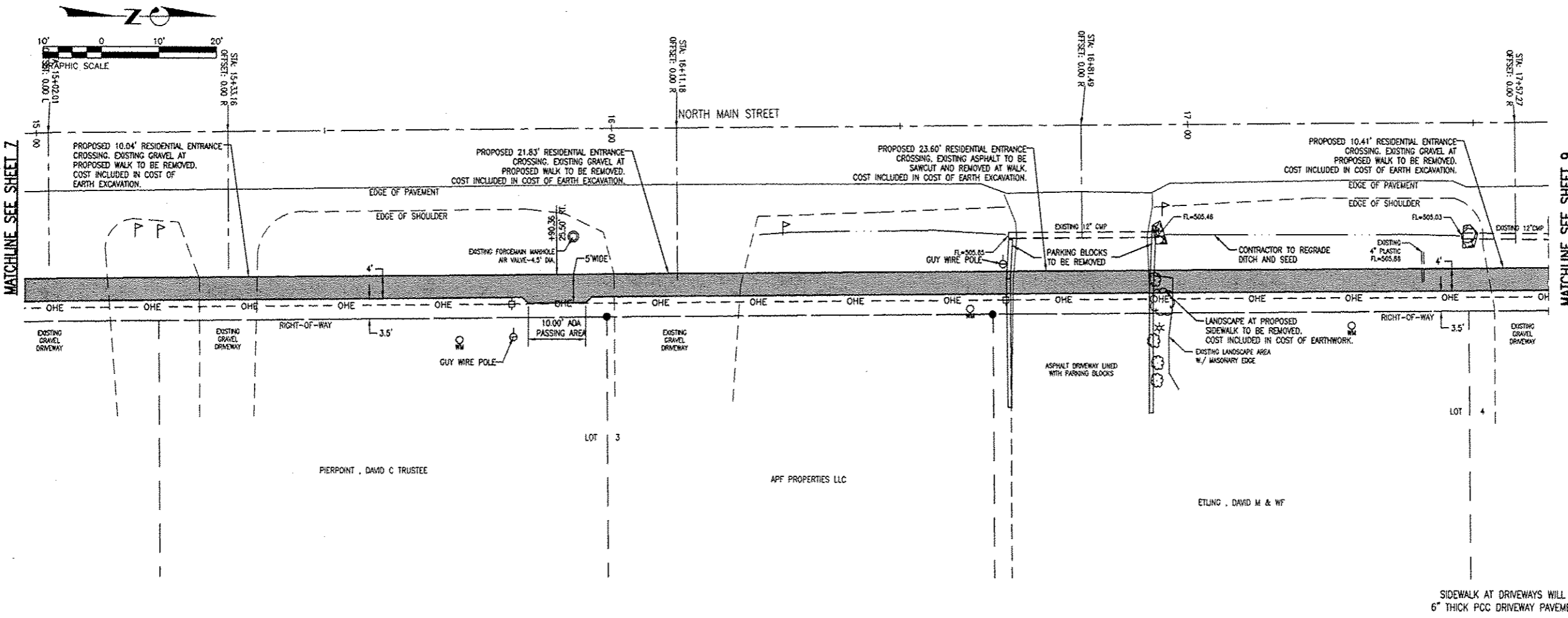
- CORPORATE OFFICE**
4940 OLD COLLINSVILLE RD.
SWANSEA, ILLINOIS 62226
TEL (618) 624-4488
FAX (618) 624-6688
corp@twm-inc.com
- WATERLOO OFFICE**
113 SOUTH MAIN STREET
WATERLOO, ILLINOIS 62298
TEL (618) 939-5050
FAX (618) 939-3938
waterloo@twm-inc.com
- EDWARDSVILLE OFFICE**
1015B CENTURY DRIVE
EDWARDSVILLE, ILLINOIS 62025
TEL (618) 656-4040
FAX (618) 656-4343
edwardsville@twm-inc.com
- ST. CHARLES OFFICE**
400 N. 5TH STREET, SUITE 101
ST. CHARLES, MISSOURI 63301
TEL (636) 724-8300
FAX (636) 724-8304
stlouis@twm-inc.com

| PROFESSIONAL REGISTRATIONS | LICENSE NO. |
|-------------------------------------|-------------|
| ILLINOIS PROFESSIONAL DESIGN FIRM | 184-001220 |
| PROFESSIONAL ENGINEERING CORP. | 62-033370 |
| PROFESSIONAL STRUCTURAL ENGR. CORP. | 01-002202 |
| ILLINOIS PROF. LAND SURVEYING CORP. | 048-000209 |
| MISSOURI PROFESSIONAL ENGR. CORP. | HC 001528 |
| MISSOURI LAND SURVEYING CORP. | HC 000346 |

SEAL

Signature: _____
Signature Date: _____
Expiration Date: _____

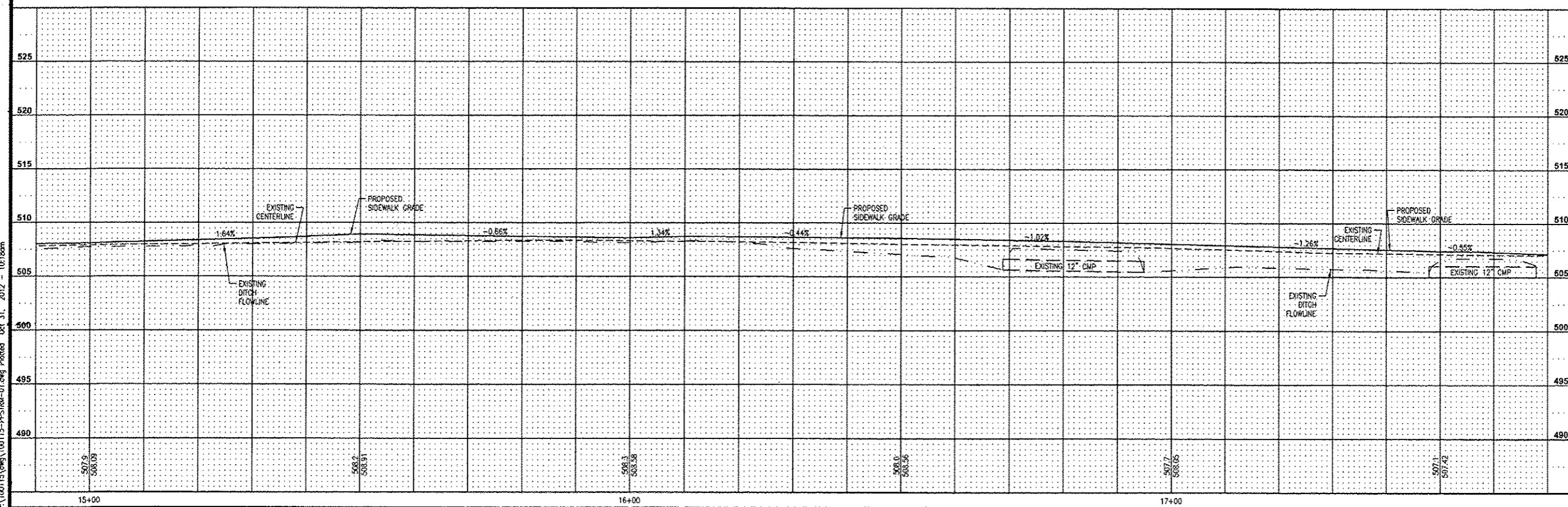
STATEMENT OF RESPONSIBILITY
I hereby confirm that the document herein to be authenticated by my seal is restricted to this sheet, and I hereby disclaim any responsibility for all other drawings, specifications, estimates, reports or other documents or instruments relating to or intended to be utilized for any other part of the architectural, engineering or survey project.



MATCHLINE SEE SHEET 7

MATCHLINE SEE SHEET 9

SIDEWALK AT DRIVEWAYS WILL BE 6" THICK PCC DRIVEWAY PAVEMENT



SECTION 10-00023-00-SW
PLAN AND PROFILES

PROJECT:
SAFE ROUTES TO SCHOOL
SIDEWALK IMPROVEMENTS
VILLAGE OF FREEBURG
ST. CLAIR COUNTY, ILLINOIS

| REV. | DATE | DESCRIPTION |
|------|------|-------------|
| | | |
| | | |
| | | |

| | |
|---------------------------|---------------------|
| DRAWN BY: LEM | SHEET |
| DESIGNED BY: MUM | 8 |
| CHECKED BY: | OF 17 SHEETS |
| APPROVED BY: | PROJECT DESCRIPTION |
| PROJECT NUMBER: D01100115 | PLAN AND PROFILES |

ISSUED FOR REVIEW ISSUED FOR BIDDING
 ISSUED FOR CONSTR. RECORD DRAWING

P:\100115\dwg\100115-PP02R01.dwg Plotted Oct 31, 2012 - 10:28am

THOUVENOT, WADE & MOERCHEN, INC.
ENGINEERS • SURVEYORS • PLANNERS



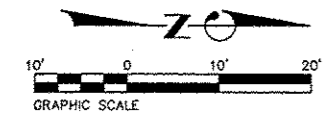
- CORPORATE OFFICE**
4940 OLD COLLINSVILLE RD.
SHAWNEE, ILLINOIS 62226
TEL (618) 624-4488
FAX (618) 624-6588
corp@twm-inc.com
- WATERLOO OFFICE**
113 SOUTH MAIN STREET
WATERLOO, ILLINOIS 62298
TEL (618) 939-5050
FAX (618) 939-3938
waterloo@twm-inc.com
- EDWARDSVILLE OFFICE**
1015B CENTURY DRIVE
EDWARDSVILLE, ILLINOIS 62025
TEL (618) 656-4040
FAX (618) 656-4343
edwardsville@twm-inc.com
- ST. CHARLES OFFICE**
400 N. 5TH STREET, SUITE 101
ST. CHARLES, MISSOURI 63301
TEL (636) 724-8300
FAX (636) 724-8304
stcharles@twm-inc.com

| PROFESSIONAL REGISTRATIONS | LICENSE NO. |
|-------------------------------------|-------------|
| ILLINOIS PROFESSIONAL DESIGN FIRM | 184-001220 |
| PROFESSIONAL ENGINEERING CORP. | 02-005370 |
| PROFESSIONAL STRUCTURAL ENGR. CORP. | 01-005202 |
| ILLINOIS PROF. LAND SURVEYING CORP. | 048-000020 |
| MISSOURI PROFESSIONAL ENGR. CORP. | HC 001528 |
| MISSOURI LAND SURVEYING CORP. | MC 000348 |

SEAL

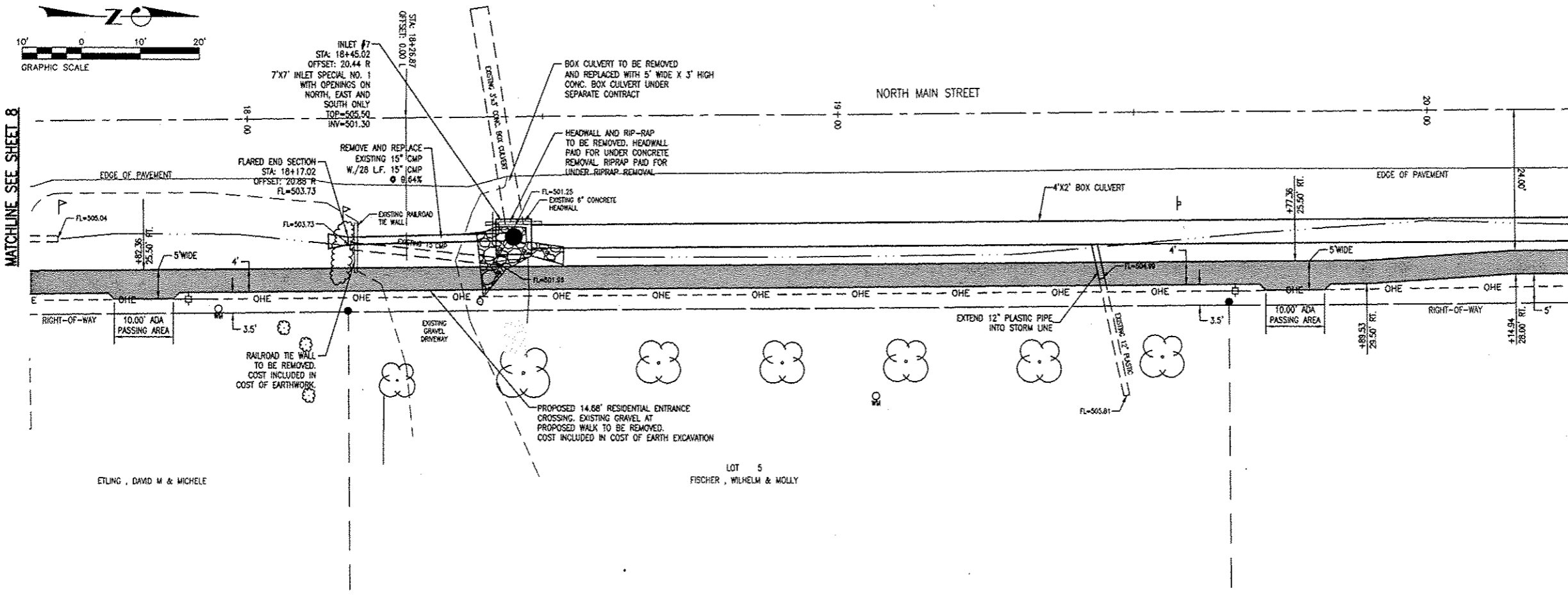
Signature: _____
Signature Date: _____
Expiration Date: _____

STATEMENT OF RESPONSIBILITY
I hereby confirm that the document herein to be authenticated by my seal is restricted to this sheet, and I hereby disclaim any responsibility for all other drawings, specifications, estimates, reports or other documents or instruments relating to or intended to be utilized for any other part of the architectural, engineering or survey project.



MATCHLINE SEE SHEET 8

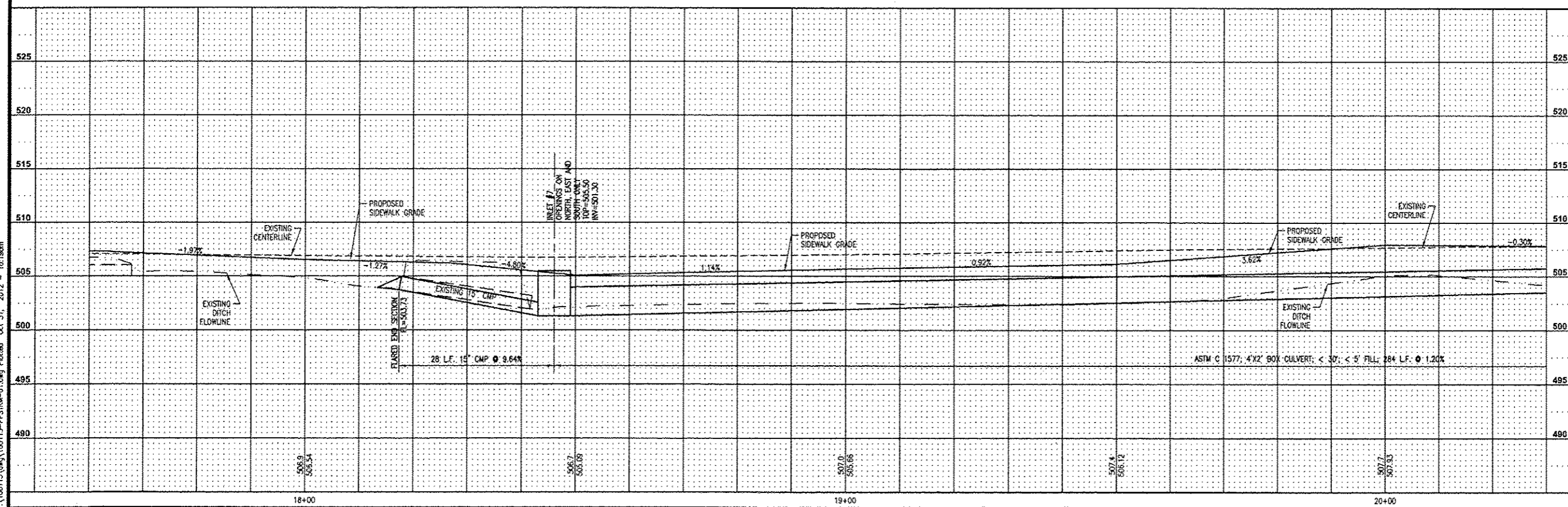
MATCHLINE SEE SHEET 10



ETLING, DAVID M & MICHELE

LOT 5
FISCHER, WILHELM & MOLLY

SIDEWALK AT DRIVEWAYS WILL BE 6" THICK PCC DRIVEWAY PAVEMENT



SECTION 10-00023-00-SW
PLAN AND PROFILES

PROJECT:
SAFE ROUTES TO SCHOOL
SIDEWALK IMPROVEMENTS
VILLAGE OF FREEBURG
ST. CLAIR COUNTY, ILLINOIS

| REV | DATE | DESCRIPTION |
|-----|------|-------------|
| | | |
| | | |
| | | |

| | |
|--|--|
| DRAWN BY: LEM | SHEET: 9 |
| DESIGNED BY: MJM | OF 17 SHEETS |
| CHECKED BY: | PROJECT DESCRIPTION: PLAN AND PROFILES |
| APPROVED BY: | PROJECT NUMBER: D01100115 |
| <input checked="" type="checkbox"/> ISSUED FOR REVIEW <input type="checkbox"/> ISSUED FOR BIDDING <input type="checkbox"/> ISSUED FOR CONSTR. <input type="checkbox"/> RECORD DRAWING | |

THOUVENOT, WADE & MOERCHEN, INC.
ENGINEERS • SURVEYORS • PLANNERS



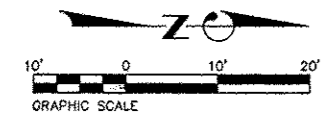
- CORPORATE OFFICE**
4940 OLD COLLINSVILLE RD.
SWANSEA, ILLINOIS 62226
TEL (618) 624-4488
FAX (618) 624-6688
corp@twm-inc.com
- WATERLOO OFFICE**
113 SOUTH MAIN STREET
WATERLOO, ILLINOIS 62298
TEL (618) 939-5050
FAX (618) 939-3938
waterloo@twm-inc.com
- EDWARDSVILLE OFFICE**
1015B CENTURY DRIVE
EDWARDSVILLE, ILLINOIS 62025
TEL (618) 656-4040
FAX (618) 656-4343
edwardsville@twm-inc.com
- ST. CHARLES OFFICE**
400 N. 5TH STREET, SUITE 101
ST. CHARLES, MISSOURI 63301
TEL (636) 724-8300
FAX (636) 724-8304
stlouis@twm-inc.com

| PROFESSIONAL REGISTRATIONS | LICENSE NO. |
|-------------------------------------|-------------|
| ILLINOIS PROFESSIONAL DESIGN FIRM | 184-001220 |
| PROFESSIONAL ENGINEERING CORP. | 62-035370 |
| PROFESSIONAL STRUCTURAL ENGR. CORP. | 81-005202 |
| ILLINOIS PROF. LAND SURVEYING CORP. | 048-000029 |
| MISSOURI PROFESSIONAL ENGR. CORP. | HC 061528 |
| MISSOURI LAND SURVEYING CORP. | HC 000346 |

SEAL

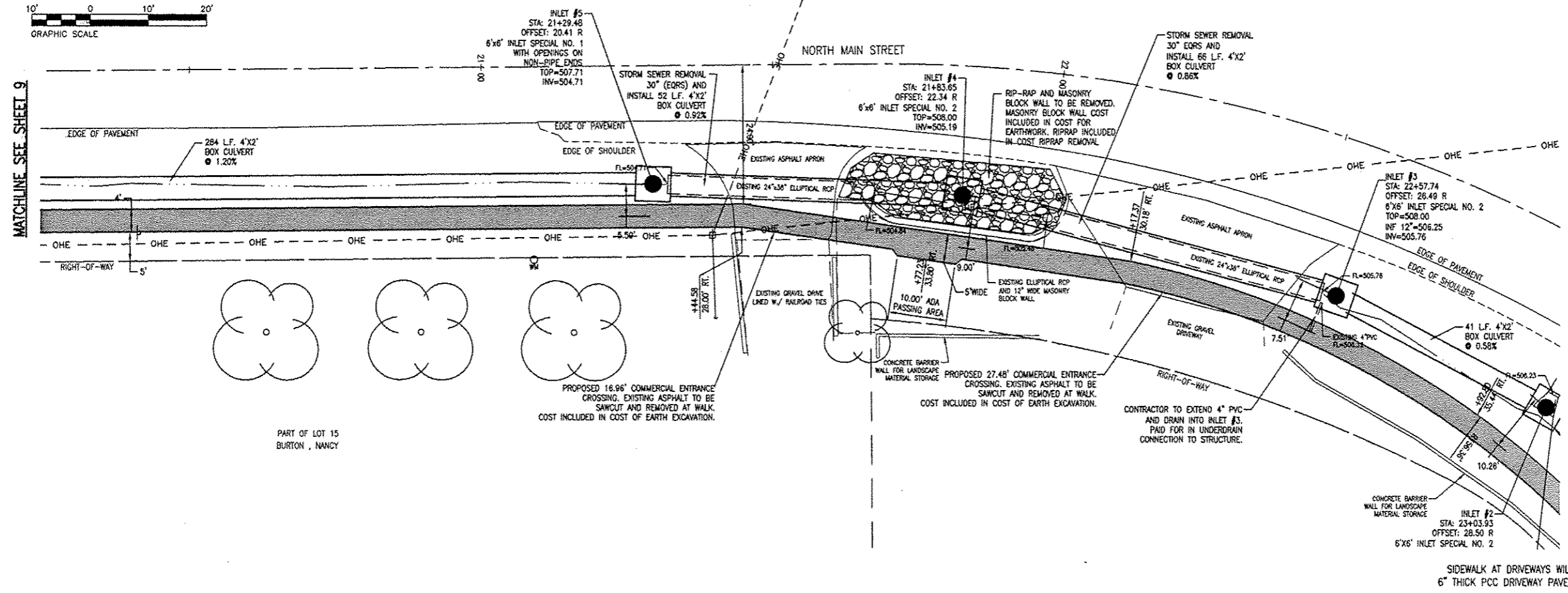
Signature: _____
Signature Date: _____
Expiration Date: _____

STATEMENT OF RESPONSIBILITY
I hereby confirm that the document herein to be authenticated by my seal is restricted to this sheet, and I hereby disclaim any responsibility for all other drawings, specifications, estimates, reports or other documents or instruments relating to or intended to be utilized for any other part of the architectural, engineering or survey project.



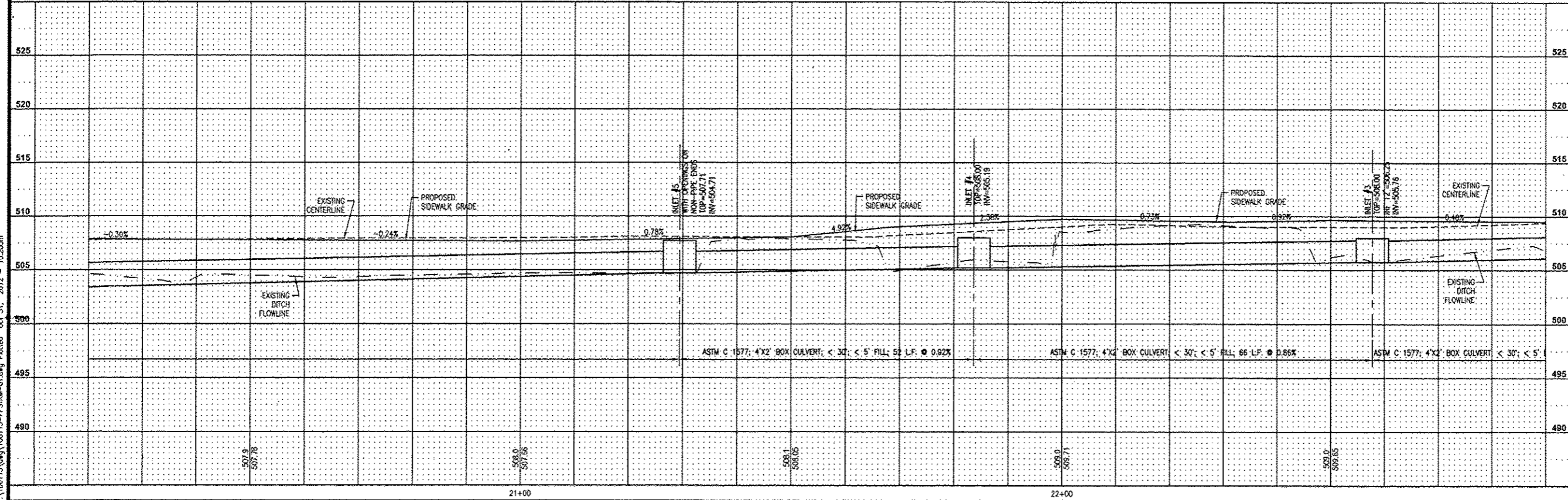
MATCHLINE SEE SHEET 9

MATCHLINE SEE SHEET 11



PART OF LOT 15
BURTON, NANCY

SIDEWALK AT DRIVEWAYS WILL BE
6" THICK PCC DRIVEWAY PAVEMENT



SECTION 10-00023-00-SW
PLAN AND PROFILES

PROJECT:
SAFE ROUTES TO SCHOOL
SIDEWALK IMPROVEMENTS
VILLAGE OF FREEBURG
ST. CLAIR COUNTY, ILLINOIS

| REV | DATE | DESCRIPTION |
|-----|------|-------------|
| | | |
| | | |
| | | |

| | |
|---|---|
| DRAWN BY: LEM | SHEET |
| DESIGNED BY: MJM | 10 |
| CHECKED BY: | OF 17 SHEETS |
| APPROVED BY: | PROJECT DESCRIPTION |
| PROJECT NUMBER: D01100115 | PLAN AND PROFILES |
| <input checked="" type="checkbox"/> ISSUED FOR REVIEW | <input type="checkbox"/> ISSUED FOR BIDDING |
| <input type="checkbox"/> ISSUED FOR CONSTR. | <input type="checkbox"/> RECORD DRAWING |



☒ **CORPORATE OFFICE**
4940 OLD COLLINSVILLE RD.
SWANSEA, ILLINOIS 62226
TEL (618) 624-4488
FAX (618) 624-6688
corp@twm-inc.com

☐ **WATERLOO OFFICE**
113 SOUTH MAIN STREET
WATERLOO, ILLINOIS 62298
TEL (618) 939-5050
FAX (618) 939-3938
waterloo@twm-inc.com

☐ **ST. LOUIS OFFICE**
1001 CRAIG ROAD, SUITE 260
ST. LOUIS, MISSOURI 63146
TEL (314) 236-5052
FAX (314) 872-2194
stlouis@twm-inc.com

| PROFESSIONAL REGISTRATIONS | LICENSE NO. |
|-------------------------------------|-------------|
| ILLINOIS PROFESSIONAL DESIGN FIRM | 184-001220 |
| PROFESSIONAL ENGINEERING CORP. | 62-035370 |
| PROFESSIONAL STRUCTURAL ENGR. CORP. | 61-005202 |
| ILLINOIS PROF. LAND SURVEYING CORP. | 049-000029 |
| MISSOURI PROFESSIONAL ENGR. CORP. | NC 001528 |
| MISSOURI LAND SURVEYING CORP. | NC 003346 |

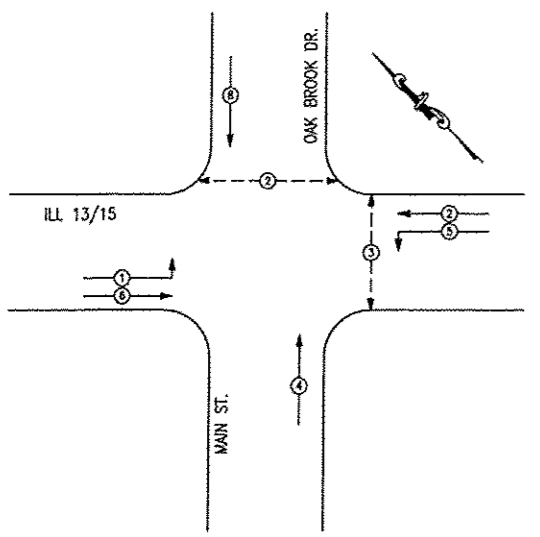
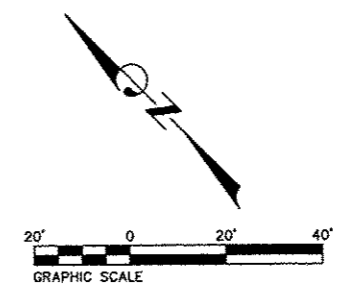
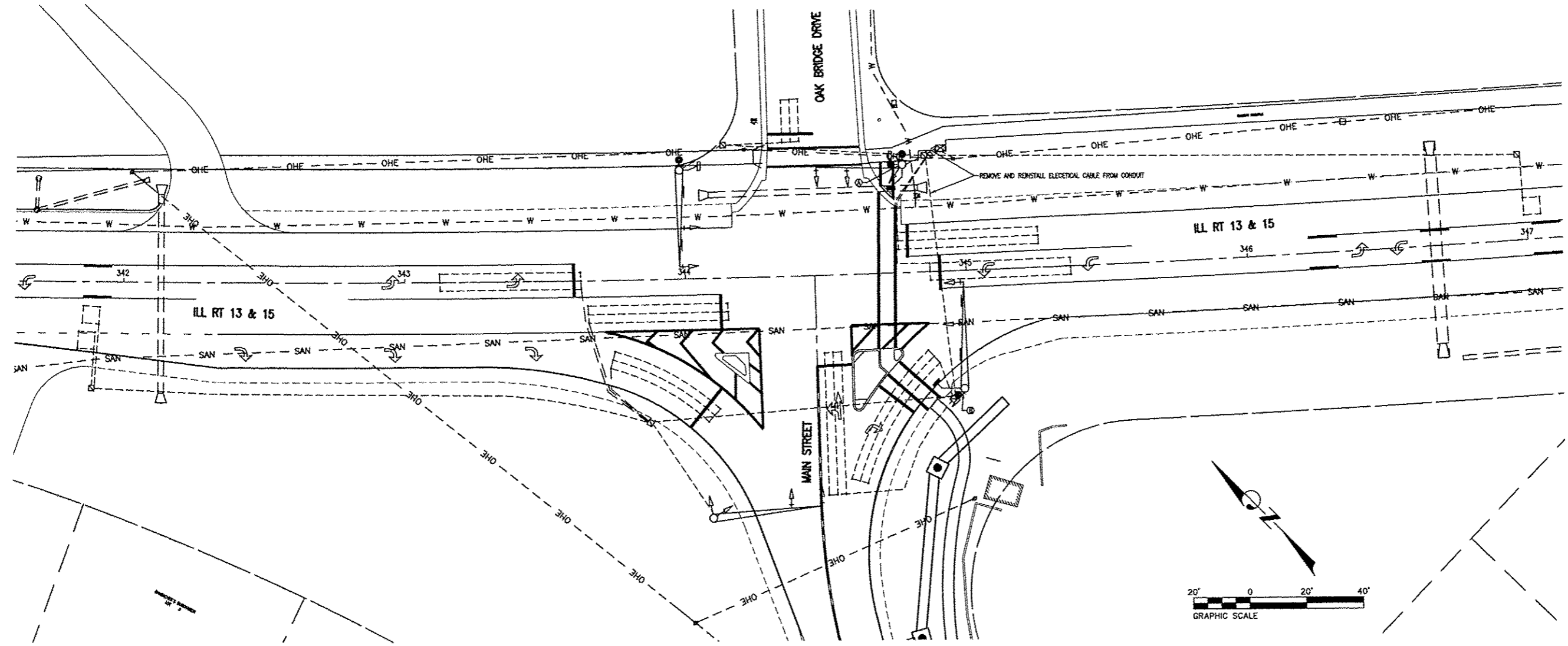
SEAL

This Professional Service conforms to the current Illinois Minimum Standards for a Boundary Survey

Signature: _____
Expiration Date: _____

STATEMENT OF RESPONSIBILITY

I hereby confirm that the document herein to be authorized by my seal is restricted to this sheet, and I hereby disclaim any responsibility for all other drawings, specifications, estimates, reports or other documents or instruments relating to or intended to be utilized for any other part of the architectural, engineering or survey project.



PHASE DESIGNATION DIAGRAM

| EXISTING SEQUENCE OF OPERATION | | | | | | | | |
|--------------------------------|--------|--------|----------|---|--------|--------|---|---|
| PHASE | 1 | 2 | 3 | 4 | 5 | 6 | 7 | 8 |
| MOVEMENT | ← | ← | NOT USED | ↑ | ↑ | → | → | ↓ |
| CONCURRENT MOVEMENT | 5 OR 6 | 5 OR 6 | | 8 | 1 OR 2 | 1 OR 2 | | 4 |

* PEDESTRIAN INTERVAL PUSHBUTTON ACTIVATED

| PROPOSED SEQUENCE OF OPERATION | | | | | | | | |
|--------------------------------|--------|--------|------|---|--------|--------|----------|---|
| PHASE | 1 | 2 | 3 | 4 | 5 | 6 | 7 | 8 |
| MOVEMENT | ← | ← | ↑ | ↑ | → | → | NOT USED | ↓ |
| CONCURRENT MOVEMENT | 5 OR 6 | 5 OR 6 | NONE | 8 | 1 OR 2 | 1 OR 2 | | 4 |

* PEDESTRIAN INTERVAL PUSHBUTTON ACTIVATED

NOTES

- ALL PEDESTRIAN SIGNAL HEADS SHALL BE POLYCARBONATE AND SHALL HAVE 12" LED SECTIONS. ALL MOUNTING HARDWARE, SIGNAL POSTS, AND BASES SHALL BE ALUMINUM. ALL BOLTS, SCREWS, NUTS, AND WASHERS SHALL BE STAINLESS STEEL. ANTI-SEIZE PASTE COMPOUND SHALL BE USED ON ALL MOUNTING HARDWARE FIELD CONNECTIONS.
- ALL TRAFFIC SIGNAL CABLES SHALL BE #14 AWG STRANDED COPPER UNLESS OTHERWISE SPECIFIED.
- ALL HANDHOLES SHALL BE CAST-IN-PLACE PORTLAND CEMENT CONCRETE (PER ARTICLE 814.03(B)). THE CAST IN PLACE LEGEND ON THE COVER SHALL BE "TRAFFIC SIGNALS". SLOPE HANDHOLE COVERS TO MATCH PROPOSED GRADE ELEVATIONS.



PEDESTRIAN SIGNAL HEAD



R10-40 (R)
1 EACH REQUIRED
SIGN PANEL TYPE 1
DETAIL (A)



R10-40 (L)
1 EACH REQUIRED
SIGN PANEL TYPE 1
DETAIL (B)

EXISTING SIGNAL LEGEND

- HANDHOLE
- DOUBLE HANDHOLE
- DETECTOR LOOP
- CONTROLLER
- PEDESTRIAN PUSHBUTTON DETECTOR
- SIGNAL HEAD, PEDESTRIAN
- SERVICE INSTALLATION
- SIGNAL HEAD, POST MOUNTED
- SIGNAL HEAD WITH BACKPLATE, MAST ARM MOUNTED
- UNDERGROUND CONDUIT

PROPOSED SIGNAL LEGEND

- PEDESTRIAN PUSHBUTTON DETECTOR
- SIGNAL HEAD, PEDESTRIAN

STANDARDS

720001
880006

SECTION 10-00023-00-SW
TRAFFIC SIGNALS MODIFICATIONS

SAFE ROUTES TO SCHOOL
SIDEWALK IMPROVEMENTS
VILLAGE OF FREEBURG
ST. CLAIR COUNTY, ILLINOIS

| REV. | DATE | DESCRIPTION |
|------|------|-------------|
| △ | | |
| △ | | |
| △ | | |

| | |
|---------------------------|--------------|
| DRAWN BY: RPM | SHEET |
| DESIGNED BY: BLR | 12 |
| CHECKED BY: | OF 17 SHEETS |
| APPROVED BY: | |
| PROJECT NUMBER: D01100115 | |

☒ ISSUED FOR REVIEW ☐ ISSUED FOR BIDDING
☐ ISSUED FOR CONSTR. ☐ RECORD DRAWING



☒ **CORPORATE OFFICE**
4940 OLD COLLINSVILLE RD.
SWANSEA, ILLINOIS 62226
TEL (618) 624-4488
FAX (618) 624-6688
corp@twm-inc.com

☐ **WATERLOO OFFICE**
113 SOUTH MAIN STREET
WATERLOO, ILLINOIS 62298
TEL (618) 939-5050
FAX (618) 939-3938
waterloo@twm-inc.com

☐ **ST. LOUIS OFFICE**
1001 CRAIG ROAD, SUITE 260
ST. LOUIS, MISSOURI 63146
TEL (314) 236-5052
FAX (314) 872-2194
stlouis@twm-inc.com

| PROFESSIONAL REGISTRATIONS | LICENSE NO. |
|-------------------------------------|-------------|
| ILLINOIS PROFESSIONAL DESIGN FIRM | 184-001299 |
| PROFESSIONAL ENGINEERING CORP. | 02-035370 |
| PROFESSIONAL STRUCTURAL ENGR. CORP. | 81-002022 |
| ILLINOIS PROF. LAND SURVEYING CORP. | 045-000029 |
| MISSOURI PROFESSIONAL ENGR. CORP. | NC 001508 |
| MISSOURI LAND SURVEYING CORP. | NC 000346 |

SEAL

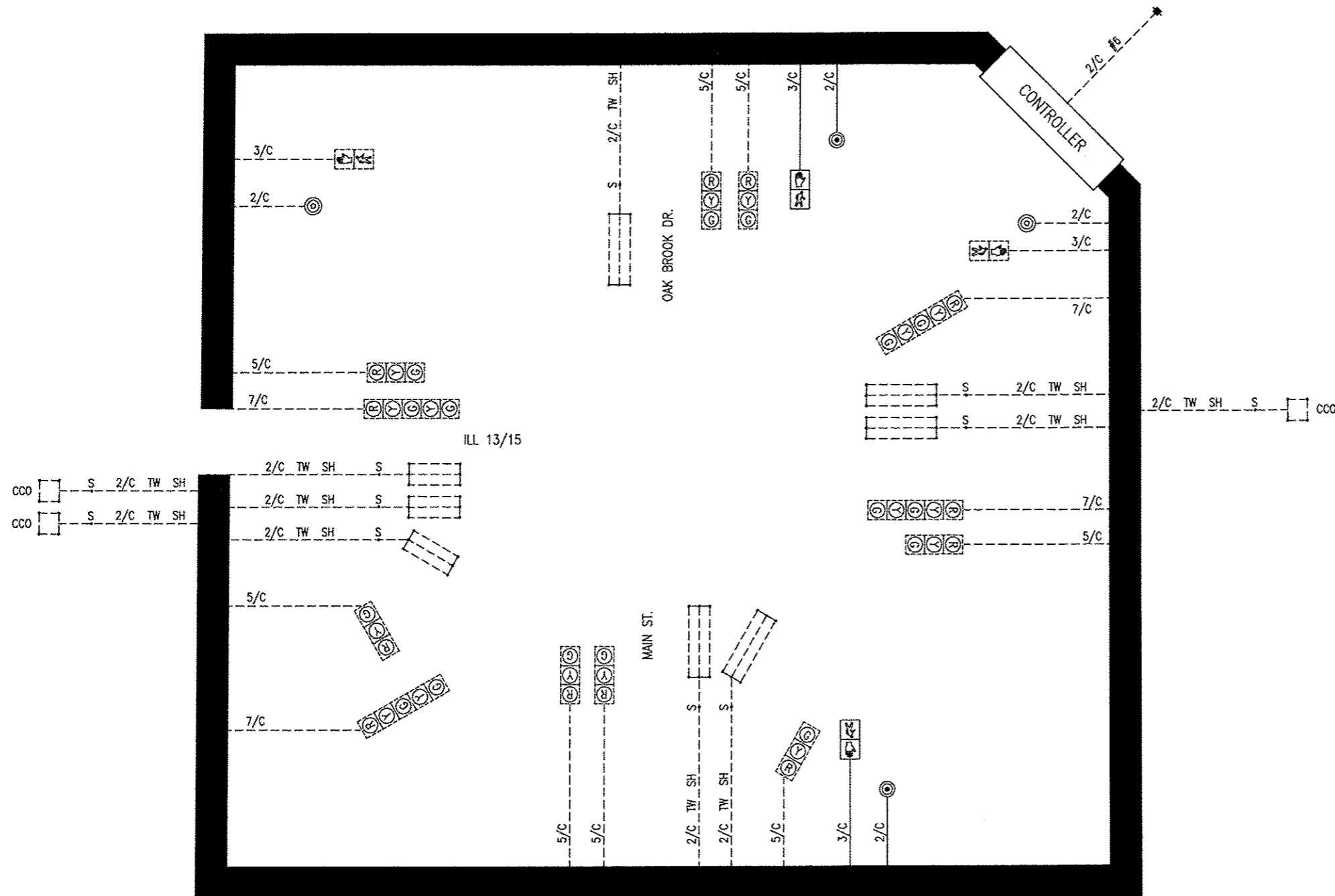
This Professional Service conforms to the current Illinois Minimum Standards for a Boundary Survey

Signature: _____
Expiration Date: _____

STATEMENT OF RESPONSIBILITY
I hereby confirm that the document herein to be authorized by my seal is restricted to this sheet, and I hereby disclaim any responsibility for all other drawings, specifications, estimates, reports or other documents or instruments relating to or intended to be utilized for any other part of the architectural, engineering or survey project.

CABLE DIAGRAM LEGEND

- EXISTING ELECTRICAL CABLE IN CONDUIT
- ⊙ EXISTING PEDESTRIAN PUSHBUTTON
- ⊙ EXISTING PEDESTRIAN SIGNAL HEAD
- ⊙ EXISTING SIGNAL
- PROPOSED ELECTRICAL CABLE IN CONDUIT
- ⊙ PROPOSED PEDESTRIAN PUSHBUTTON
- ⊙ PROPOSED PEDESTRIAN SIGNAL HEAD
- S CABLE SPLICE (SEE GENERAL NOTES)
- 2/C INDICATES NUMBER OF CONDUCTORS IN CABLE
- COO CALL CARRY OVER (SEE GENERAL NOTES)
- DD CALL DELAY (SEE GENERAL NOTES)
- SERVICE INSTALLATION
- #6 INDICATES AMERICAN WIRE GAUGE (AWG) SIZE & CONDUCTORS



P:\PROJECTS\10-00023-00-SW-Traffic Signals.dwg 1/11/2012 1:05:25 PM CST

TITLE: SECTION 10-00023-00-SW
TRAFFIC SIGNALS MODIFICATIONS

PROJECT: SAFE ROUTES TO SCHOOL
SIDEWALK IMPROVEMENTS
VILLAGE OF FREEBURG
ST. CLAIR COUNTY, ILLINOIS

| REV. | DATE | DESCRIPTION |
|------|------|-------------|
| △ | | |
| △ | | |
| △ | | |

| | |
|---|---|
| DRAWN BY: RPM | SHEET |
| DESIGNED BY: BLR | 13 |
| CHECKED BY: | |
| APPROVED BY: | |
| PROJECT NUMBER: D01100115 | OF 17 SHEETS |
| <input checked="" type="checkbox"/> ISSUED FOR REVIEW | <input type="checkbox"/> ISSUED FOR BIDDING |
| <input type="checkbox"/> ISSUED FOR CONSTR. | <input type="checkbox"/> RECORD DRAWING |

THOUVENOT, WADE & MOERCHEN, INC.
ENGINEERS • SURVEYORS • PLANNERS



- CORPORATE OFFICE**
4940 OLD COLLINSVILLE RD.
SHANSEA, ILLINOIS 62226
TEL (618) 624-4488
FAX (618) 624-6888
corp@twm-inc.com
- WATERLOO OFFICE**
113 SOUTH MAIN STREET
WATERLOO, ILLINOIS 62298
TEL (618) 939-5050
FAX (618) 939-3938
waterloo@twm-inc.com
- EDWARDSVILLE OFFICE**
1015B CENTURY DRIVE
EDWARDSVILLE, ILLINOIS 62025
TEL (618) 656-4040
FAX (618) 656-4343
edwardsville@twm-inc.com
- ST. CHARLES OFFICE**
400 N. 5TH STREET, SUITE 101
ST. CHARLES, MISSOURI 63301
TEL (636) 724-8300
FAX (636) 724-8304
stlouis@twm-inc.com

| PROFESSIONAL REGISTRATIONS | LICENSE NO. |
|-------------------------------------|-------------|
| ILLINOIS PROFESSIONAL DESIGN FIRM | 164-001230 |
| PROFESSIONAL ENGINEERING CORP. | 67-053370 |
| PROFESSIONAL STRUCTURAL ENGR. CORP. | 61-055202 |
| ILLINOIS PROF. LAND SURVEYING CORP. | 048-000029 |
| MISSOURI PROFESSIONAL ENGR. CORP. | NO 00158 |
| MISSOURI LAND SURVEYING CORP. | NO 000346 |

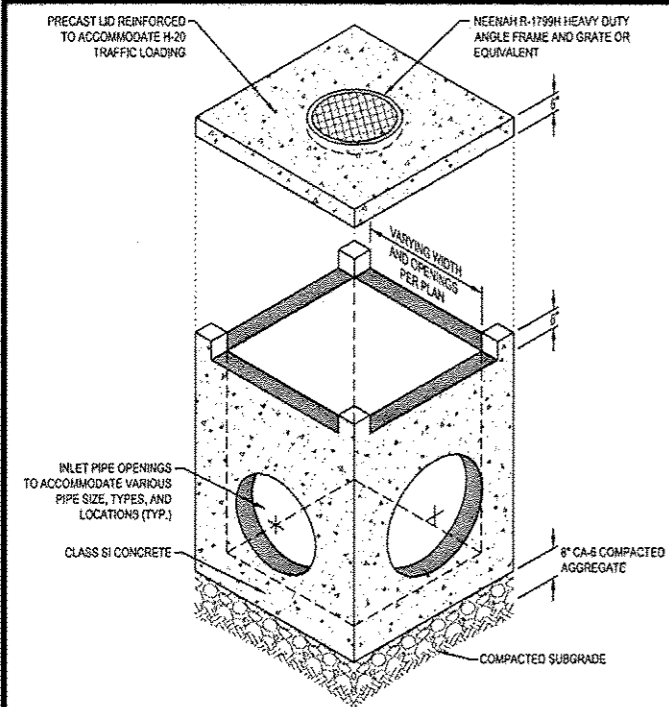
Signature: _____
 Signature Date: _____
 Expiration Date: _____
STATEMENT OF RESPONSIBILITY
 I hereby confirm that the document herein to be authorized by my seal is restricted to this sheet, and I hereby disclaim any responsibility for all other drawings, specifications, estimates, reports or other documents or instruments relating to or intended to be utilized for any other part of the architectural, engineering or survey project.

TITLE: SECTION 10-00023-00-SW
DETAIL SHEETS

PROJECT: SAFE ROUTES TO SCHOOL
SIDEWALK IMPROVEMENTS
VILLAGE OF FREEBURG
ST. CLAIR COUNTY, ILLINOIS

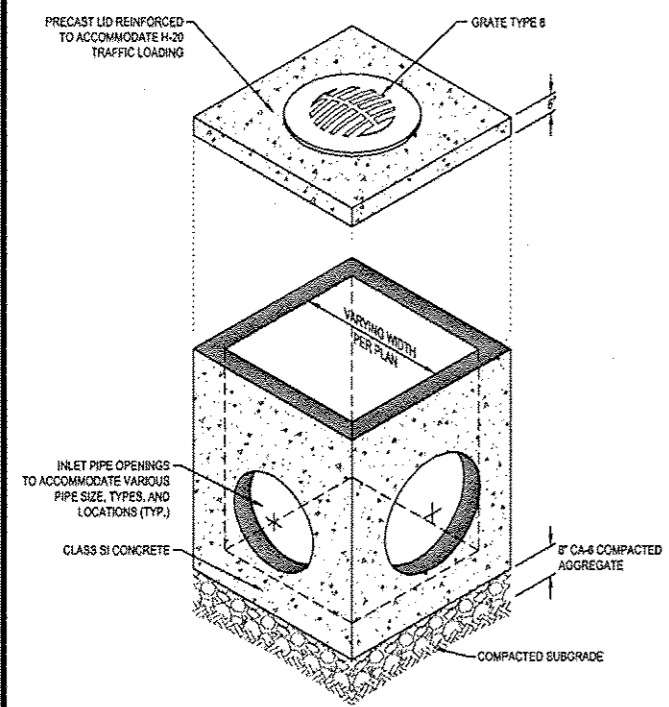
| REV | DATE | DESCRIPTION |
|-----|------|-------------|
| ▲ | | |
| ▲ | | |
| ▲ | | |

| | |
|---|---|
| DRAWN BY: LEM | SHEET |
| DESIGNED BY: MJM | 14 |
| CHECKED BY: | OF 17 SHEETS |
| APPROVED BY: | PROJECT DESCRIPTION |
| PROJECT NUMBER: D01100115 | DETAIL SHEET |
| <input checked="" type="checkbox"/> ISSUED FOR REVIEW | <input type="checkbox"/> ISSUED FOR BIDDING |
| <input type="checkbox"/> ISSUED FOR CONSTR. | <input type="checkbox"/> RECORD DRAWING |



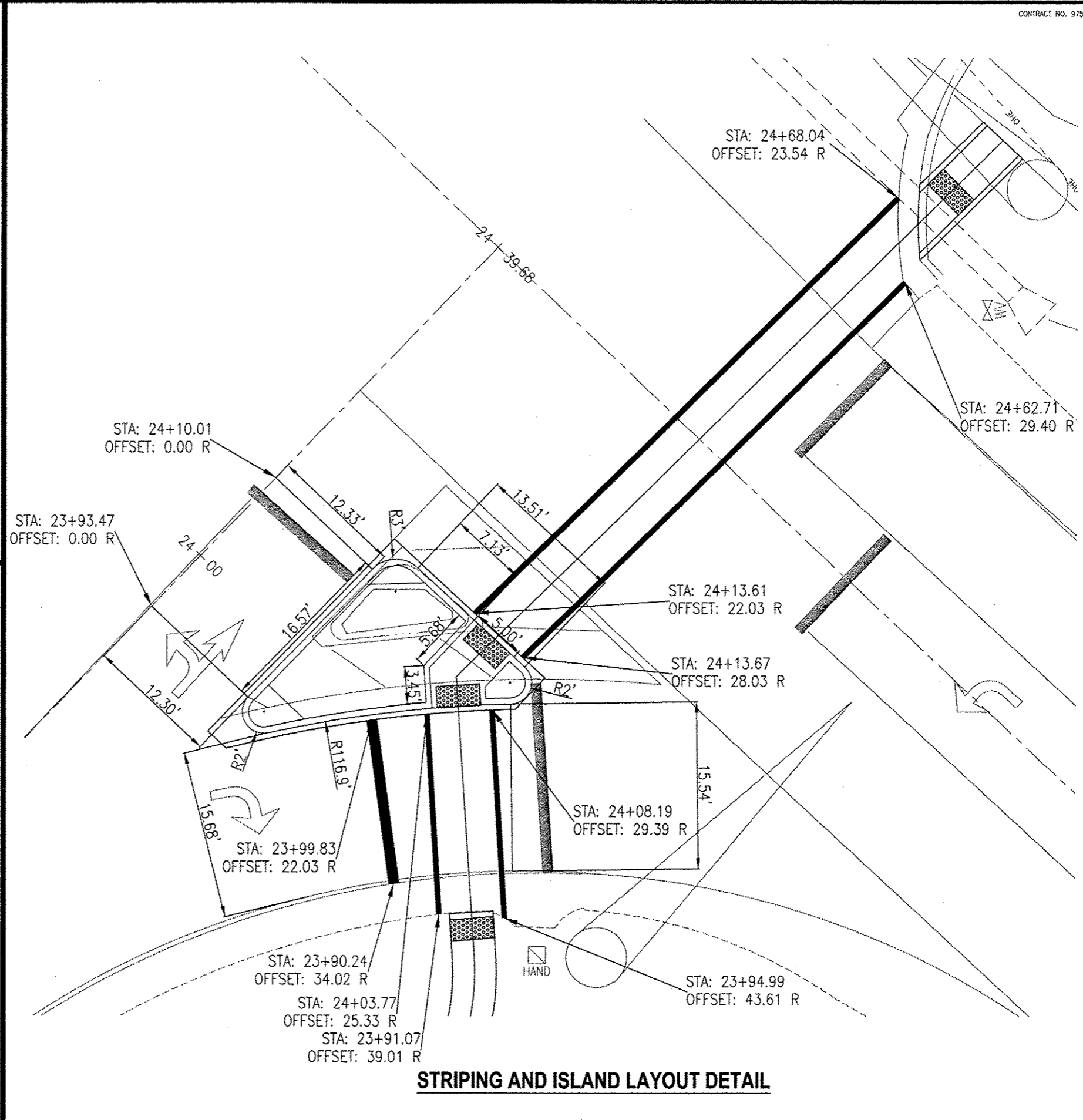
- NOTES:
1. PRECAST OPEN THROAT INLETS SHALL CONFORM TO ASTM C-478
 2. CONTRACTOR TO SUBMIT SHOP DRAWINGS FOR ALL STORM SEWER STRUCTURES
 3. MINIMUM INSIDE DIMENSION OF OPEN THROAT INLETS SHALL BE 3' X 3'
 4. ALL INLETS SHALL HAVE A MINIMUM OF 6" BETWEEN OUTSIDE OF PIPE AND ADJACENT WALL OF STRUCTURE.
 5. STORM SEWER PIPE TO BE SEALED WITH NON-SHRINK GROUT AT PIPE/INLET INTERFACE.

INLET SPECIAL NO. 1



- NOTES:
1. PRECAST OPEN THROAT INLETS SHALL CONFORM TO ASTM C-478
 2. CONTRACTOR TO SUBMIT SHOP DRAWINGS FOR ALL STORM SEWER STRUCTURES
 3. ALL INLETS SHALL HAVE A MINIMUM OF 6" BETWEEN OUTSIDE OF PIPE AND ADJACENT WALL OF STRUCTURE.
 4. STORM SEWER PIPE TO BE SEALED WITH NON-SHRINK GROUT AT PIPE/INLET INTERFACE.

INLET SPECIAL NO. 2



STRIPING AND ISLAND LAYOUT DETAIL

\\TWMSWST\Projects\00115\Draw\00115-015-02.dwg 2/23/2012 12:15:20 PM CST

THOUVENOT, WADE & MOERCHEN, INC.
ENGINEERS • SURVEYORS • PLANNERS



- CORPORATE OFFICE**
4940 OLD COLLINSVILLE RD.
SWANSEA, ILLINOIS 62226
TEL (618) 624-4488
FAX (618) 624-6688
corp@twm-inc.com
- WATERLOO OFFICE**
113 SOUTH MAIN STREET
WATERLOO, ILLINOIS 62298
TEL (618) 939-5050
FAX (618) 939-3938
waterloo@twm-inc.com
- EDWARDSVILLE OFFICE**
1015B CENTURY DRIVE
EDWARDSVILLE, ILLINOIS 62025
TEL (618) 656-4040
FAX (618) 656-4343
edwardsville@twm-inc.com
- ST. CHARLES OFFICE**
400 N. 5TH STREET, SUITE 101
ST. CHARLES, MISSOURI 63301
TEL (636) 724-8300
FAX (636) 724-8304
stlouis@twm-inc.com

| PROFESSIONAL REGISTRATIONS | LICENSE NO. |
|-------------------------------------|-------------|
| ILLINOIS PROFESSIONAL DESIGN FIRM | 184-001270 |
| PROFESSIONAL ENGINEERING CORP. | 62-055370 |
| PROFESSIONAL STRUCTURAL ENGR. CORP. | 81-005202 |
| ILLINOIS PROF. LAND SURVEYING CORP. | 048-000023 |
| MISSOURI PROFESSIONAL ENGR. CORP. | MC 001578 |
| MISSOURI LAND SURVEYING CORP. | MC 000346 |

SEAL

Signature: _____
Expiration Date: _____
Expiration Date: _____

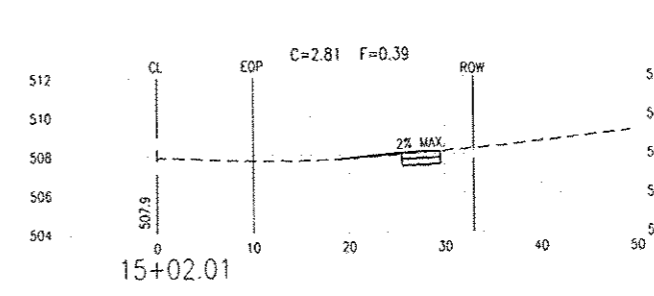
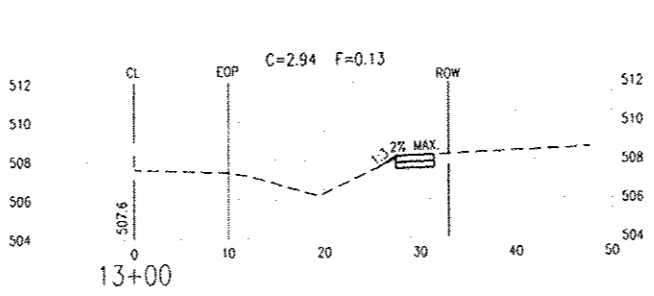
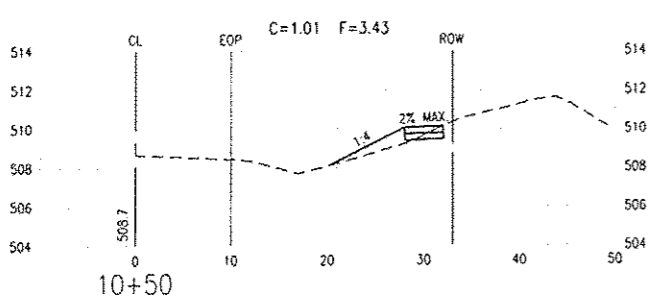
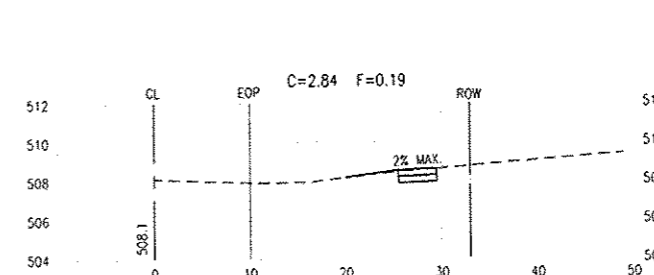
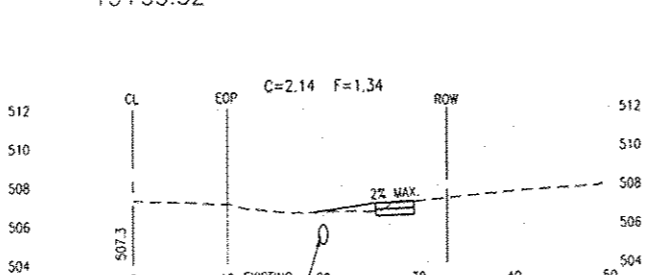
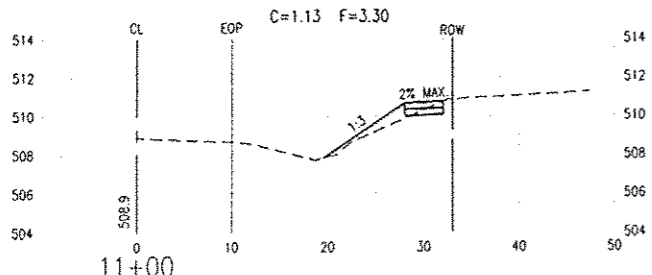
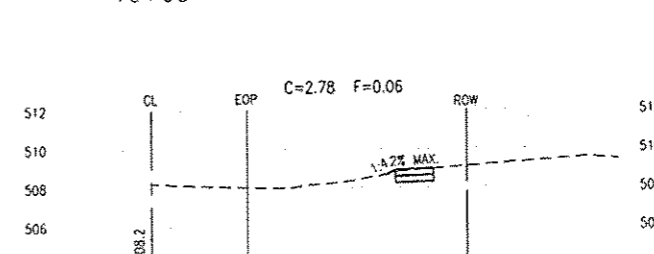
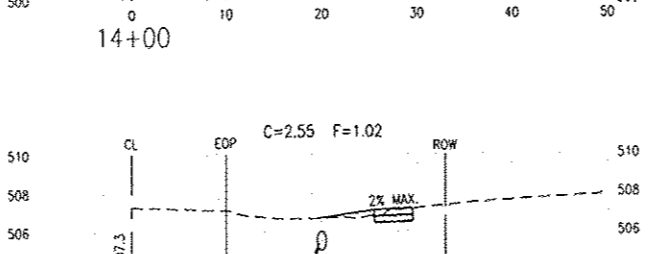
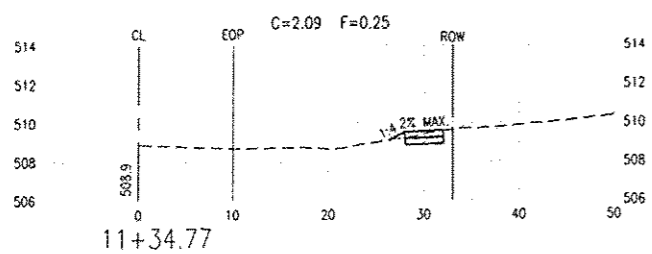
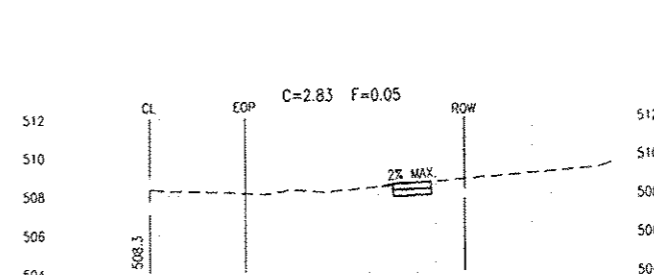
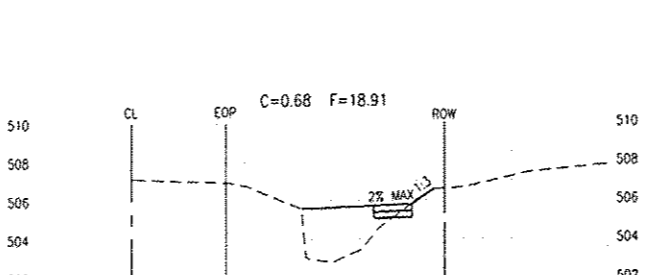
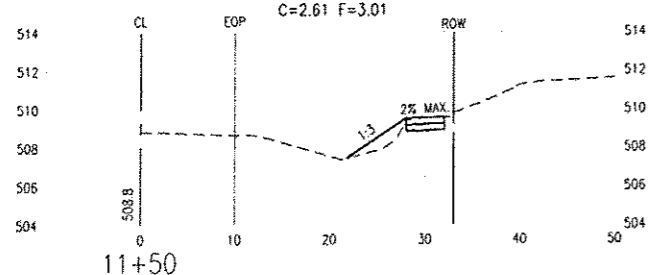
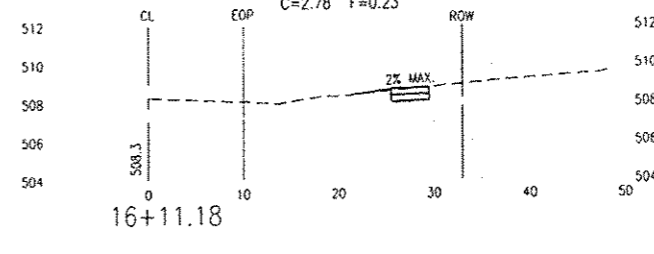
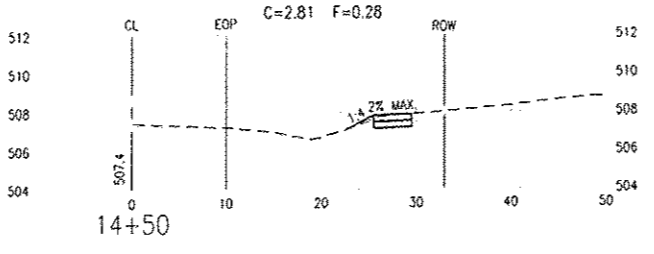
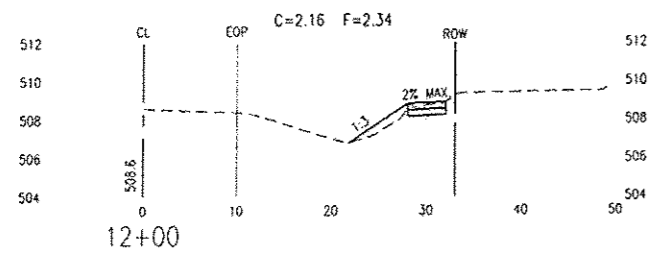
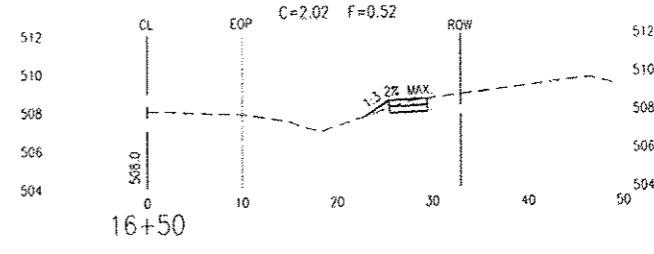
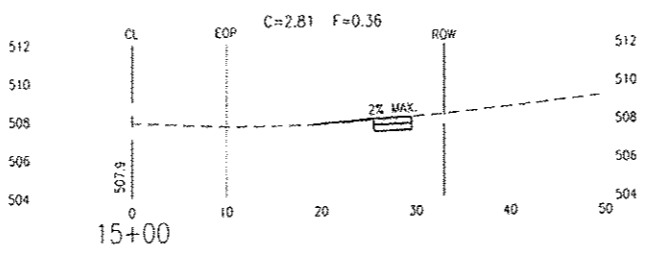
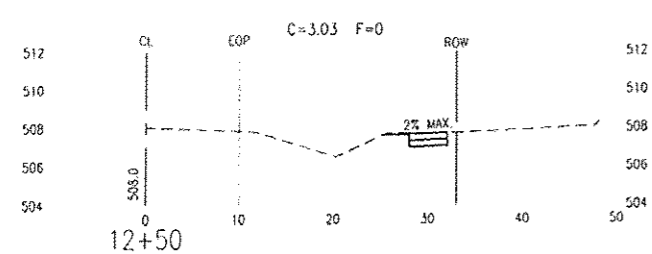
STATEMENT OF RESPONSIBILITY
I hereby confirm that the document herein to be authorized by my seal is restricted to this sheet, and I hereby disclaim any responsibility for all other drawings, specifications, estimates, reports or other documents or instruments relating to or intended to be utilized for any other part of the architectural, engineering or survey project.

TITLE: SECTION 10-00023-00-SW CROSS SECTIONS
PROJECT: SAFE ROUTES TO SCHOOL SIDEWALK IMPROVEMENTS VILLAGE OF FREEBURG ST. CLAIR COUNTY, ILLINOIS

| REV | DATE | DESCRIPTION |
|-----|------|-------------|
| △ | | |
| △ | | |
| △ | | |

| | |
|------------------|------------------------------------|
| DRAWN BY: LEM | SHEET 15 |
| DESIGNED BY: MJM | OF 17 SHEETS |
| CHECKED BY: | PROJECT DESCRIPTION CROSS SECTIONS |
| APPROVED BY: | PROJECT NUMBER D01100115 |

- ISSUED FOR REVIEW
- ISSUED FOR BIDDING
- ISSUED FOR CONSTR.
- RECORD DRAWING



\\PWSNF51\Projects\100115\dwg\100115-XSECTIONS.dwg 2/23/2012 2:01:31 PM CST



CORPORATE OFFICE
4940 OLD COLLINSVILLE RD.
SWANSEA, ILLINOIS 62226
TEL (618) 624-4488
FAX (618) 624-6688
corp@twm-inc.com

WATERLOO OFFICE
113 SOUTH MAIN STREET
WATERLOO, ILLINOIS 62298
TEL (618) 939-5050
FAX (618) 939-3938
waterloo@twm-inc.com

EDWARDSVILLE OFFICE
1015B CENTURY DRIVE
EDWARDSVILLE, ILLINOIS 62025
TEL (618) 656-4040
FAX (618) 656-4343
edwardsville@twm-inc.com

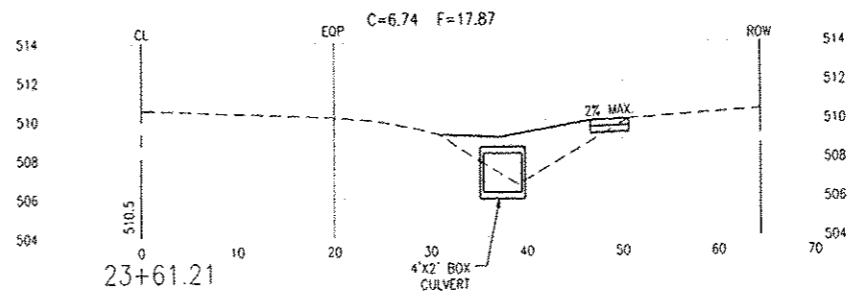
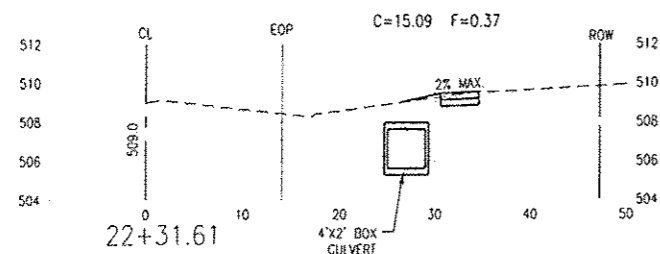
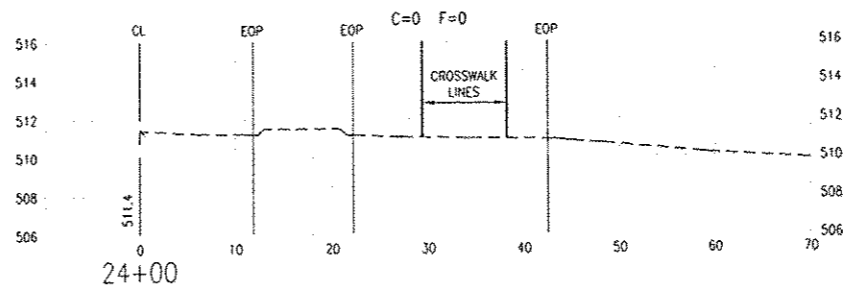
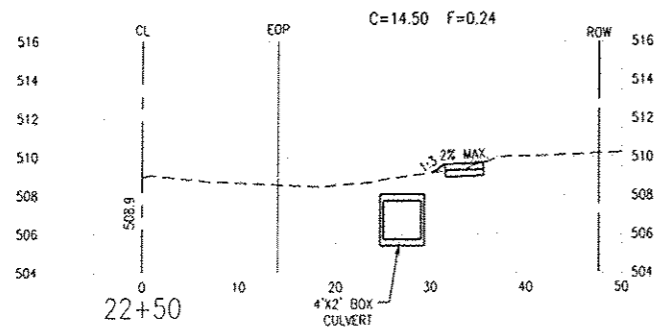
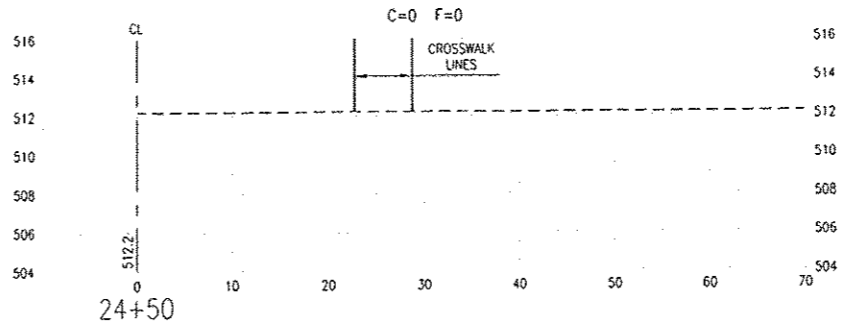
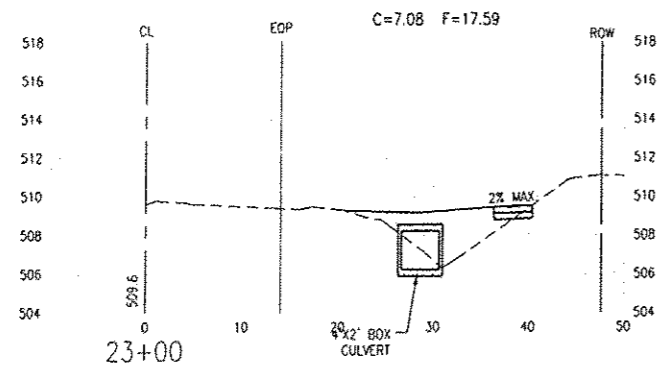
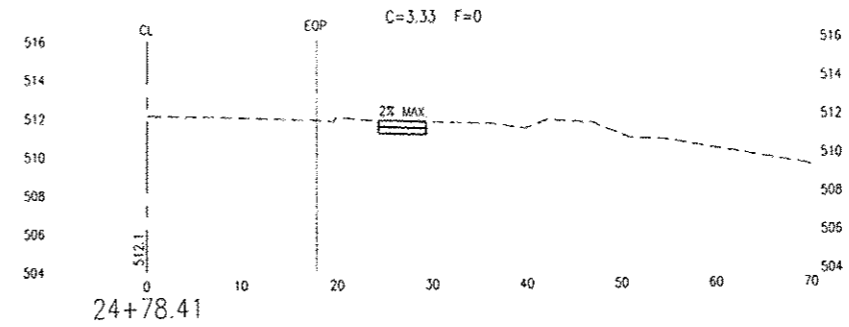
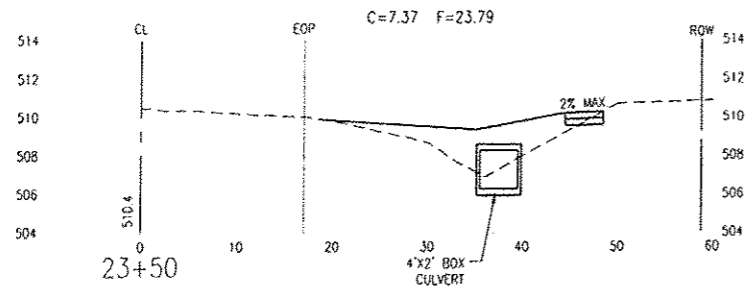
ST. CHARLES OFFICE
400 N. 5TH STREET, SUITE 101
ST. CHARLES, MISSOURI 63301
TEL (636) 724-8300
FAX (636) 724-8304
stlouis@twm-inc.com

| PROFESSIONAL REGISTRATIONS | LICENSE NO. |
|-------------------------------------|-------------|
| ILLINOIS PROFESSIONAL DESIGN FIRM | 184-001220 |
| PROFESSIONAL ENGINEERING CORP. | 62-055370 |
| PROFESSIONAL STRUCTURAL ENGR. CORP. | 81-002202 |
| ILLINOIS PROF. LAND SURVEYING CORP. | 048-000229 |
| MISSOURI PROFESSIONAL ENGR. CORP. | NC 001528 |
| MISSOURI LAND SURVEYING CORP. | NC 000346 |

SEAL

Signature: _____
 Signature Date: _____
 Creation Date: _____

STATEMENT OF RESPONSIBILITY
 I hereby confirm that the document herein to be published by my seal is restricted to this sheet, and I hereby disclaim any responsibility for all other drawings, specifications, estimates, reports or other documents or instruments relating to or released to be utilized for any other part of the architectural, engineering or survey project.



\\PWSMES1\Projects\100115\dwg\100115--XSECTIONS.dwg 2/23/2012 2:01:31 PM CST

**SECTION 10-00023-00-SW
CROSS SECTIONS**

**PROJECT:
SAFE ROUTES TO SCHOOL
SIDEWALK IMPROVEMENTS
VILLAGE OF FREEBURG
ST. CLAIR COUNTY, ILLINOIS**

| REV. | DATE | DESCRIPTION |
|------|------|-------------|
| △ | | |
| △ | | |
| △ | | |

| | | |
|---|---|---------------------------------------|
| DRAWN BY: | LEM | SHEET |
| DESIGNED BY: | MJM | 17 |
| CHECKED BY: | | OF 17 SHEETS |
| APPROVED BY: | | PROJECT DESCRIPTION CROSS SECTIONS |
| PROJECT NUMBER | 001100115 | |
| <input checked="" type="checkbox"/> ISSUED FOR REVIEW | <input type="checkbox"/> ISSUED FOR BIDDING | |
| <input type="checkbox"/> ISSUED FOR CONSTR. | <input type="checkbox"/> RECORD DRAWING | |