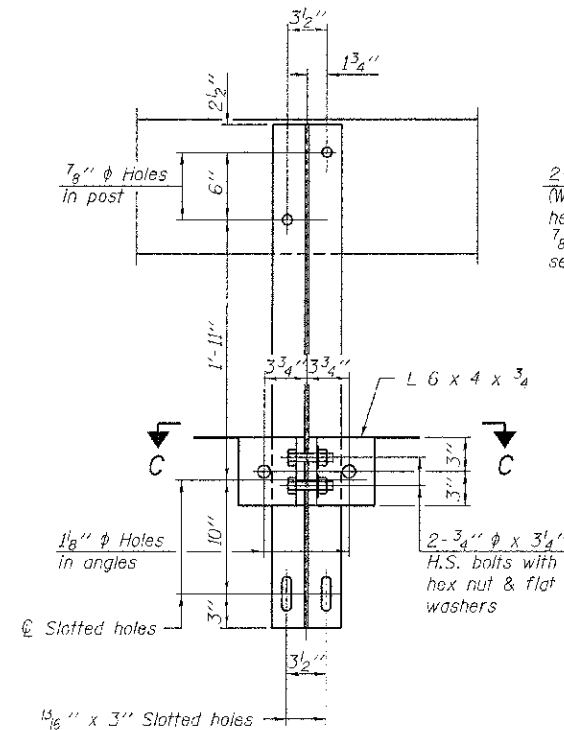
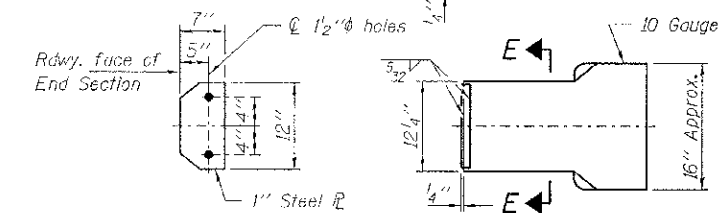
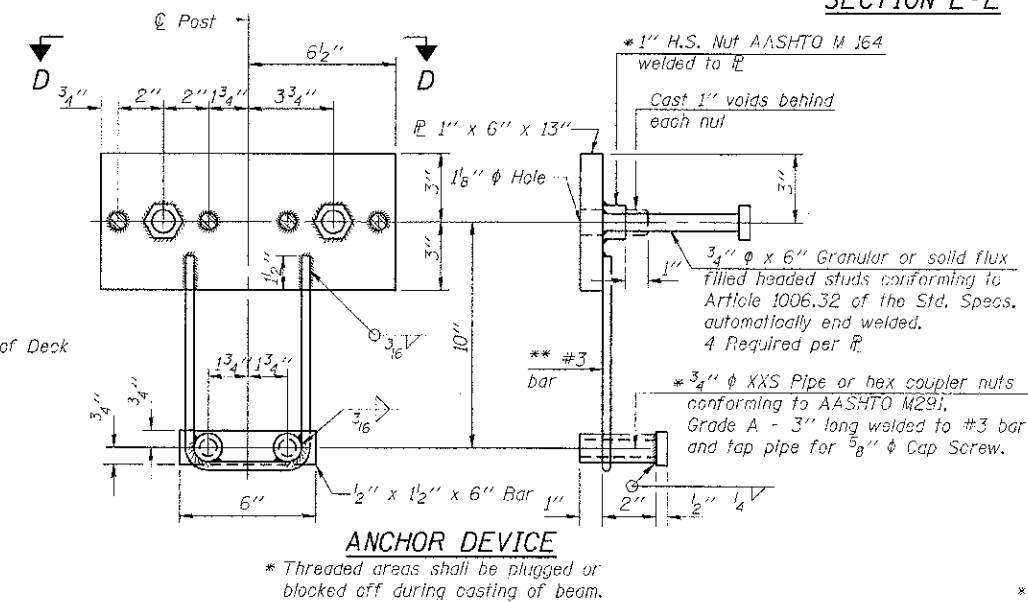
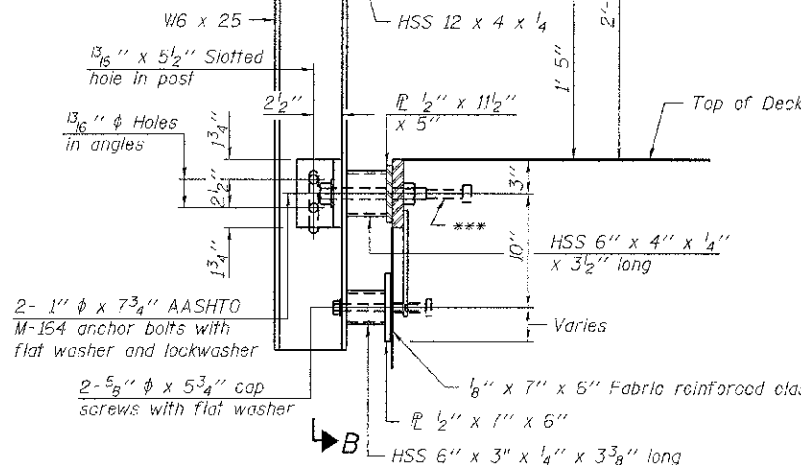


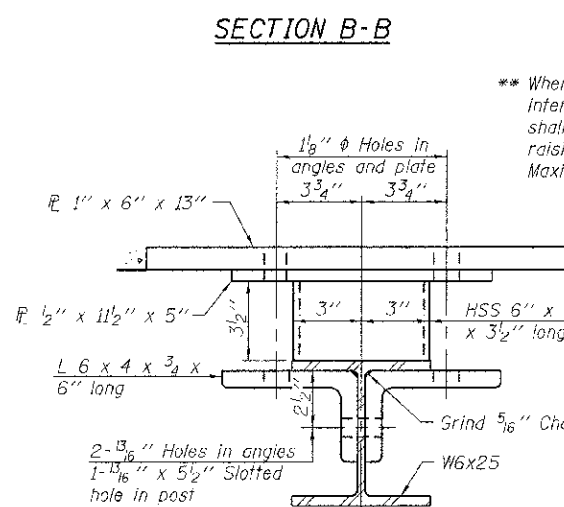
Note: Cost of curled end sections shall be included with the Steel Railing. (4 Required)



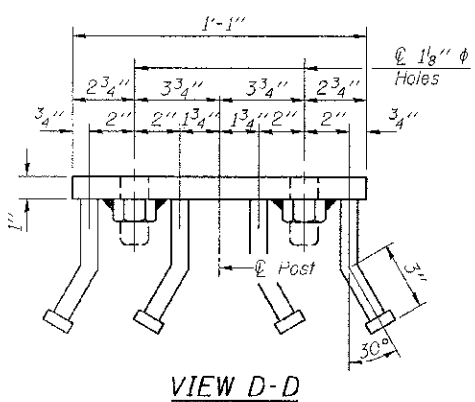
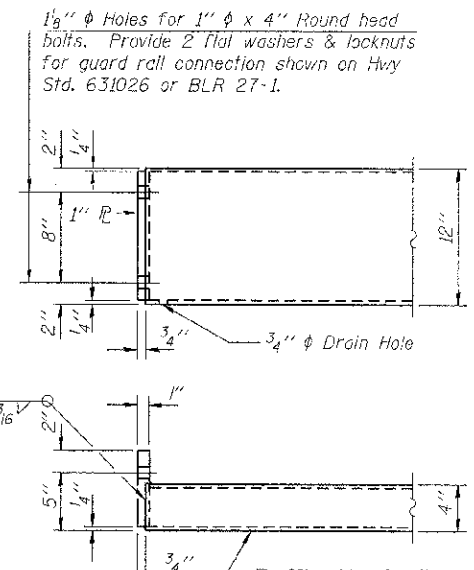
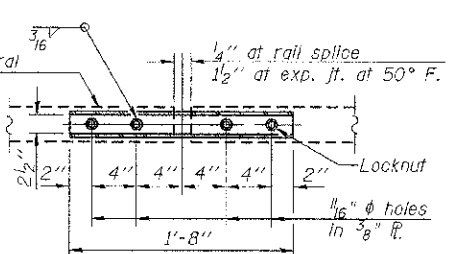
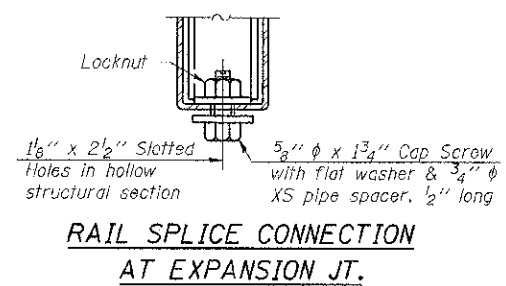
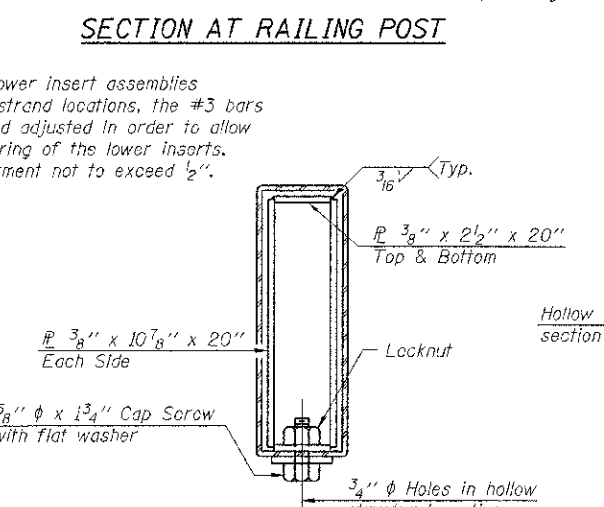
2-3/4\"/>



Notes:
 All field drilled holes shall be coated with an approved zinc rich paint before erection.
 For multi-span bridges, sufficient 1/4\"/>



** Whenever the lower insert assemblies interfere with strand locations, the #3 bars shall be cut and adjusted in order to allow raising or lowering of the lower inserts. Maximum adjustment not to exceed 1/2\"/>



BILL OF MATERIAL

Item	Unit	Quantity
Steel Railing, Type S-1	Foot	113

R-23A 7-1-10 (10'-9\"/>

FILE NAME = 112158-shr-bridge.dgn	USER NAME =	DESIGNED - J.W.F.	REVISED -
HAMPTON, LENZINI AND RENWICK, INC. 2008 STEVENSON DRIVE, SUITE 201 SPRINGFIELD, ILLINOIS 62703	PLOT SCALE =	CHECKED - S.W.M.	REVISED -
ILLINOIS PROFESSIONAL DESIGN FIRM 12/23/1993 CORP. 124-02958	PLOT DATE = 12/23/2012	DRAWN - D.A.B.	REVISED -
		CHECKED - M.G.B.	REVISED -

STATE OF ILLINOIS
 JOHNSON COUNTY HIGHWAY DEPARTMENT

STEEL RAILING, TYPE S1
 STRUCTURE NO. 044-3134

SHEET NO. 5 OF 9 SHEETS

T.R.	SECTION	COUNTY	TOTAL SHEETS	SHEET NO.
65	10-01218-00-BR	JOHNSON	19	15
COUNTY UNIT ROAD DISTRICT			CONTRACT NO. 99476	
[ILLINOIS] FED. AID PROJECT				