

GENERAL NOTES:

THIS SECTION SHALL BE CONSTRUCTED IN ACCORDANCE WITH THE PLANS, SPECIAL PROVISIONS AND STANDARD SPECIFICATIONS FOR ROAD AND BRIDGE CONSTRUCTION, ADOPTED JANUARY 1, 2012.

THE WORK INVOLVED ON THIS SECTION CONSISTS OF THE REMOVAL OF THE EXISTING STRUCTURE, THE CONSTRUCTION OF A 70 FOOT LONG SINGLE SPAN PRECAST, PRESTRESSED CONCRETE DECK BLAN BRIDGE, EARTH APPROACHES, AGGREGATE SURFACE COURSE AND OTHER MISCELLANEOUS ITEMS NECESSARY TO COMPLETE THIS SECTION.

ALL ELEVATIONS ARE BASED ON U.S.G.S. MEAN SEA LEVEL DATUM.

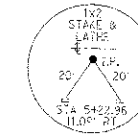
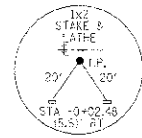
IT SHALL BE THE CONTRACTOR'S RESPONSIBILITY TO CONTACT ALL THE UTILITIES, AFFECTING THE PROJECT, PRIOR TO CONSTRUCTION.

THE I-BEAMS SHALL REMAIN THE PROPERTY OF THE COUNTY.

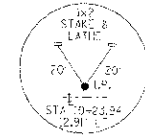
AGGREGATE SURFACE COURSE, TYPE B INCLUDES 24 TON FOR FILL NEXT TO THE BRIDGE, 14 TON FOR THE FIELD ENTRANCE, AND 302 TON FOR THE ROADWAY.

NOTE: CONSTRUCTION TRANSITION
STA. 2+50 TO STA 3+00
STA 7+50 TO STA 8+00

ALL QUANTITIES ARE INCLUDED IN THE PROPOSAL



CURVE #1
P.I. STA: 7+04.18
L: 110'7.29'
D: 102.30'
R: 5500'
T: 53.08'
L: 107.50'
E: 0.26'
P.C. STA: 6+45.21
P.T. STA: 7+58.17

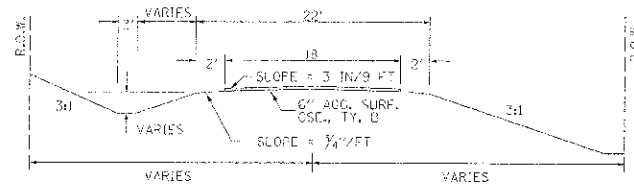


CH	SECTION	COUNTY	TOTAL SHEETS	SHEET NO.
11	10-00118-00-BR	WHITE	12	2
FED. ROAD DIST. NO. 9 ILLINOIS				
PROJECT: BRIDGE 103059				
CONTRACT: 99007				
LEC JOB # 15110049H				

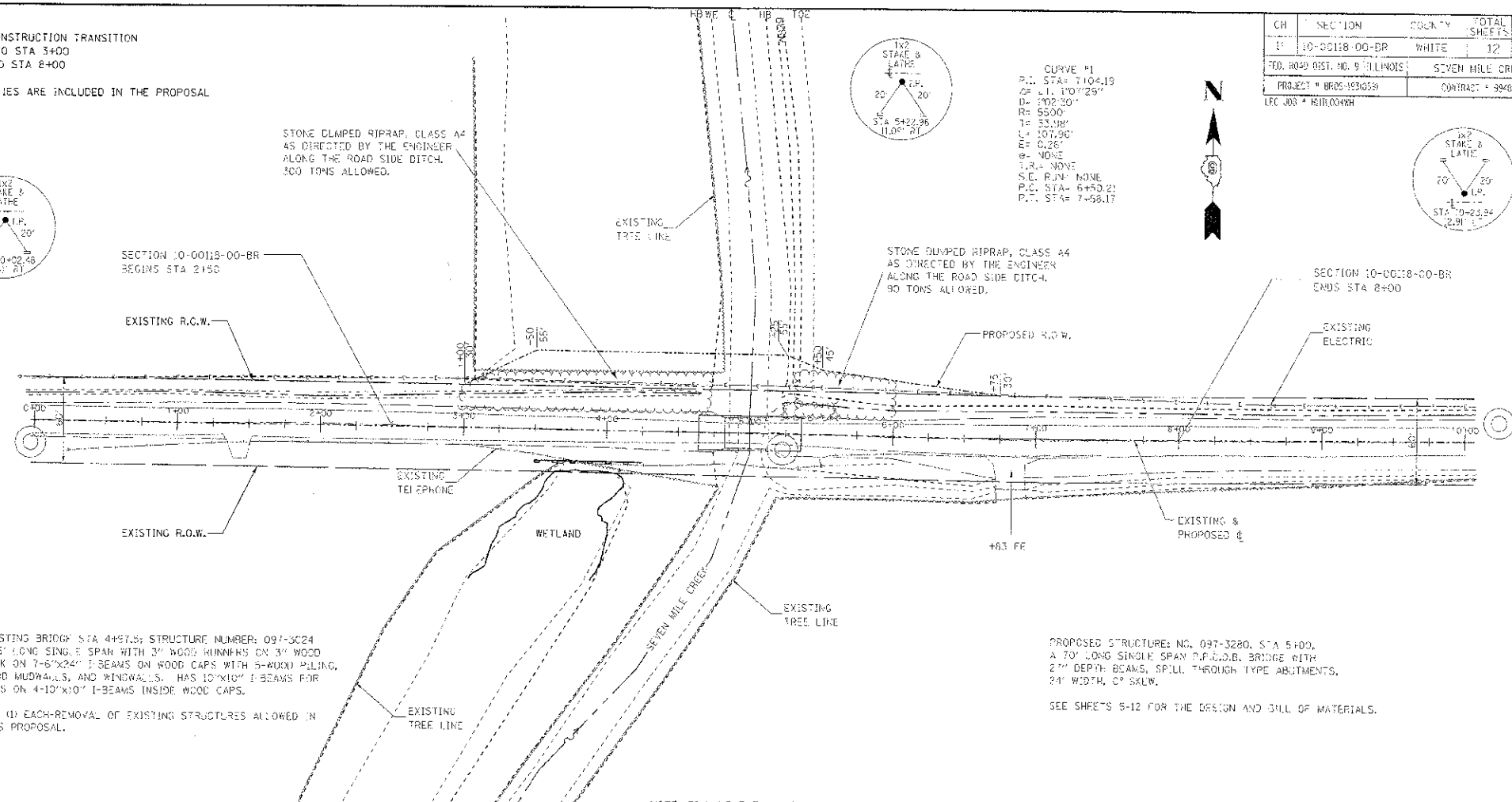
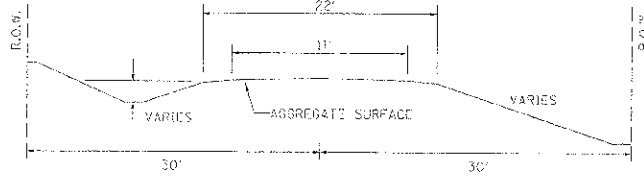
323 W. 3RD ST
P.O. BOX 150
MT. CARMEL, IL 62883
PHONE: (618)-262-3551
FAX: (618)-263-3327

405 W. STATE ST
SUITE 1
PRINCETON, IN 47670
PHONE: (812)-366-7811
FAX: (812)-365-2812

TYPICAL CROSS SECTION PROPOSED



TYPICAL CROSS SECTION EXISTING



EXISTING BRIDGE STA 4+87.5; STRUCTURE NUMBER: 097-3024
24.5' LONG SINGLE SPAN WITH 3" WOOD RIMMERS ON 3" WOOD DECK ON 7-8"x24" I-BEAMS ON WOOD CAPS WITH 5-WOOD PILING, WOOD MUDWALLS, AND WINDOWS. HAS 10"x10" I-BEAMS FOR CAPS ON 4-10"x10" I-BEAMS INSIDE WOOD CAPS.

ONE (1) EACH-REMOVAL OF EXISTING STRUCTURES ALLOWED IN THIS PROPOSAL.

PROPOSED STRUCTURE: NO. 097-3280, STA 5+00,
A 70' LONG SINGLE SPAN P.P.C.D.B. BRIDGE WITH 2" DEPTH BEAMS, SPILL THROUGH TYPE ABUTMENTS, 24" WIDTH, CP SAWL.

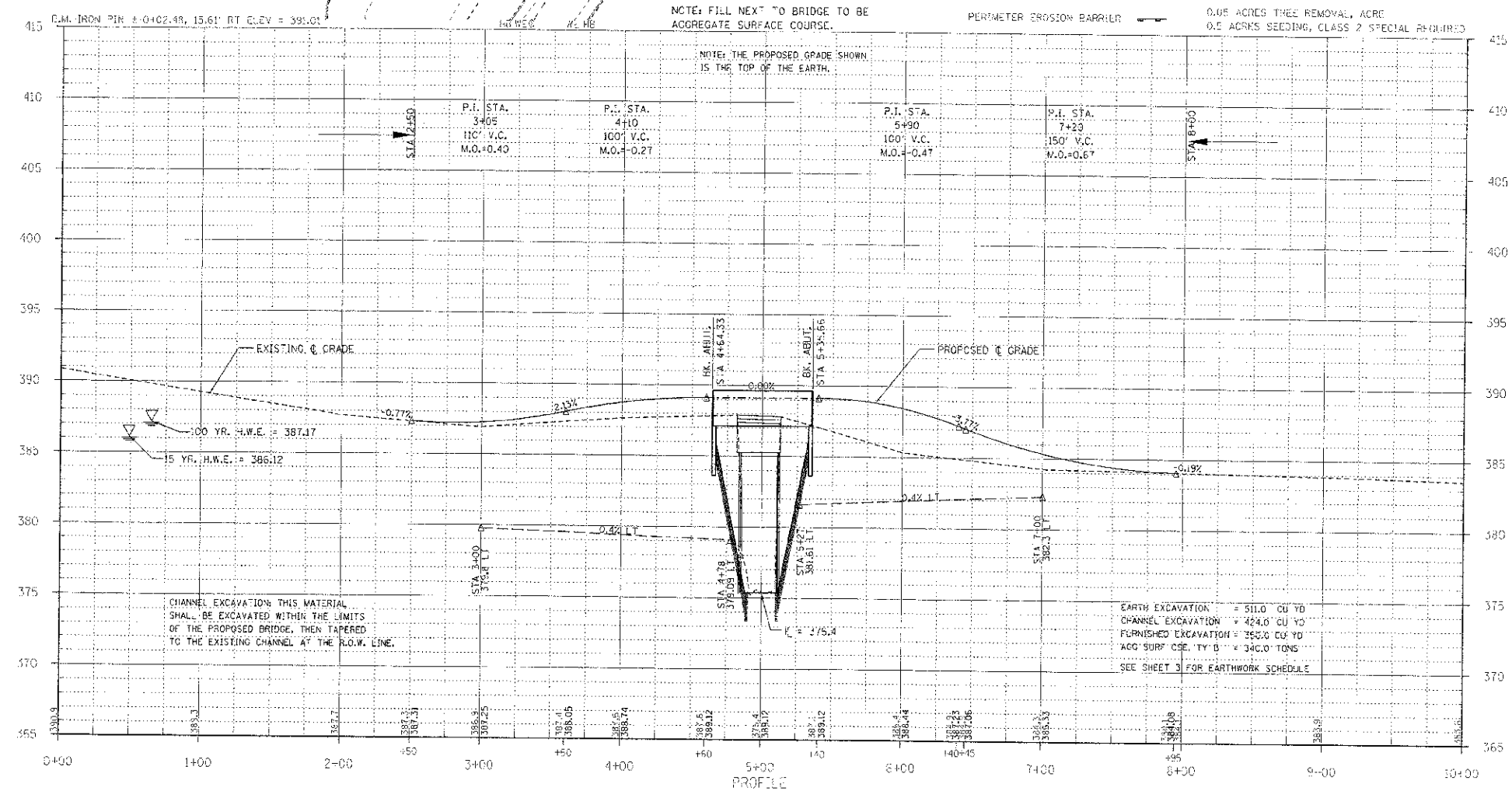
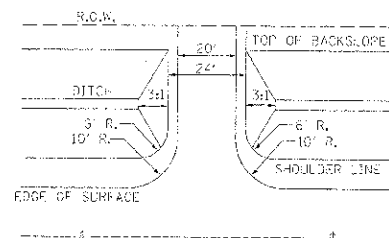
SEE SHEETS 5-12 FOR THE DESIGN AND BILL OF MATERIALS.

UTILITIES:
MULLI.E. 1-800-892-0123
WAYNE-WHILL ELECTRIC CO-OP
1-618-842-2196
FRONTIER COMMUNICATIONS
1-618-997-0707

NOTE: CONSTRUCT SPECIAL DITCH
STA 3+00 TO STA 4+78 LT
STA 5+27 TO STA 7+00 LT

NOTE: PERIMETER EROSION BARRIER
STA 3+50 TO STA 4+25 22' RT
75 FOOT PERIMETER EROSION BARRIER

FIELD ENTRANCE DETAIL



PROFESSIONAL DESIGN FIRM
LAND SURVEY & PROFESSIONAL ENGINEERING CORPORATION
184-00087
(62-332435)(62-022769)

MARION M. MEFFORD
REGISTERED PROFESSIONAL ENGINEER OF ILLINOIS

DATE: 10-29-12
EXPIRES: 11-30-15

C.H. 11
OVER SEVEN MILE CREEK
WHITE COUNTY, ILLINOIS

SHEET TITLE: PLAN & PROFILE
SCALE: NBS
BY: AMV
DATE: 05/12
REV:
2 of 12
SHEET NO.