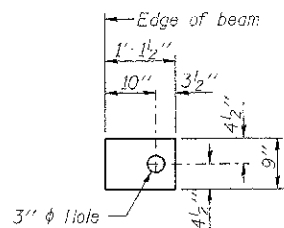


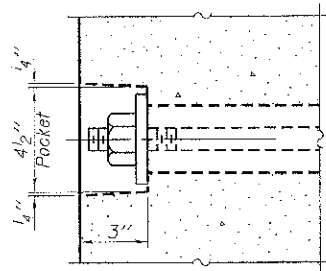
FABRIC BEARING PAD
(Interior - 10 Req'd.)



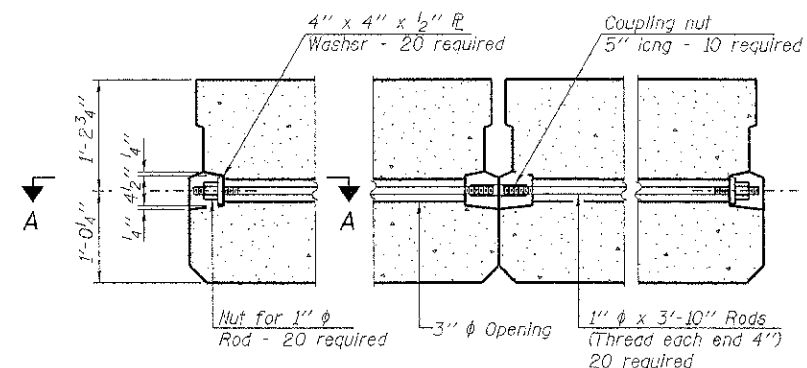
FABRIC BEARING PAD
(Exterior - 4 Req'd.)

FIXED

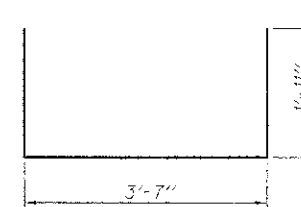
Notes:
All bearing pads shall be 1" thick.
Omit holes when using expansion bearings.
Expansion bearing pad shall be bonded to the substructure.



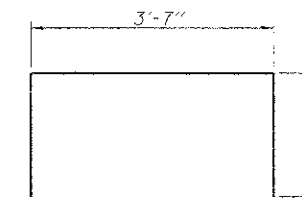
SECTION A-A



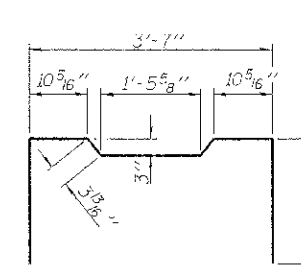
TYPICAL TRANSVERSE TIE ASSEMBLY



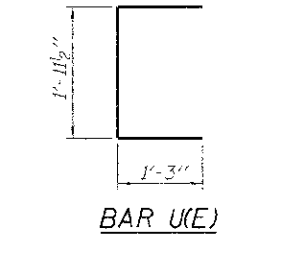
BAR S(E)



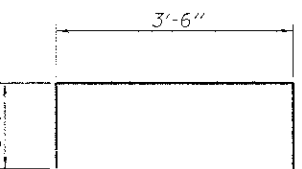
BAR S1(E)



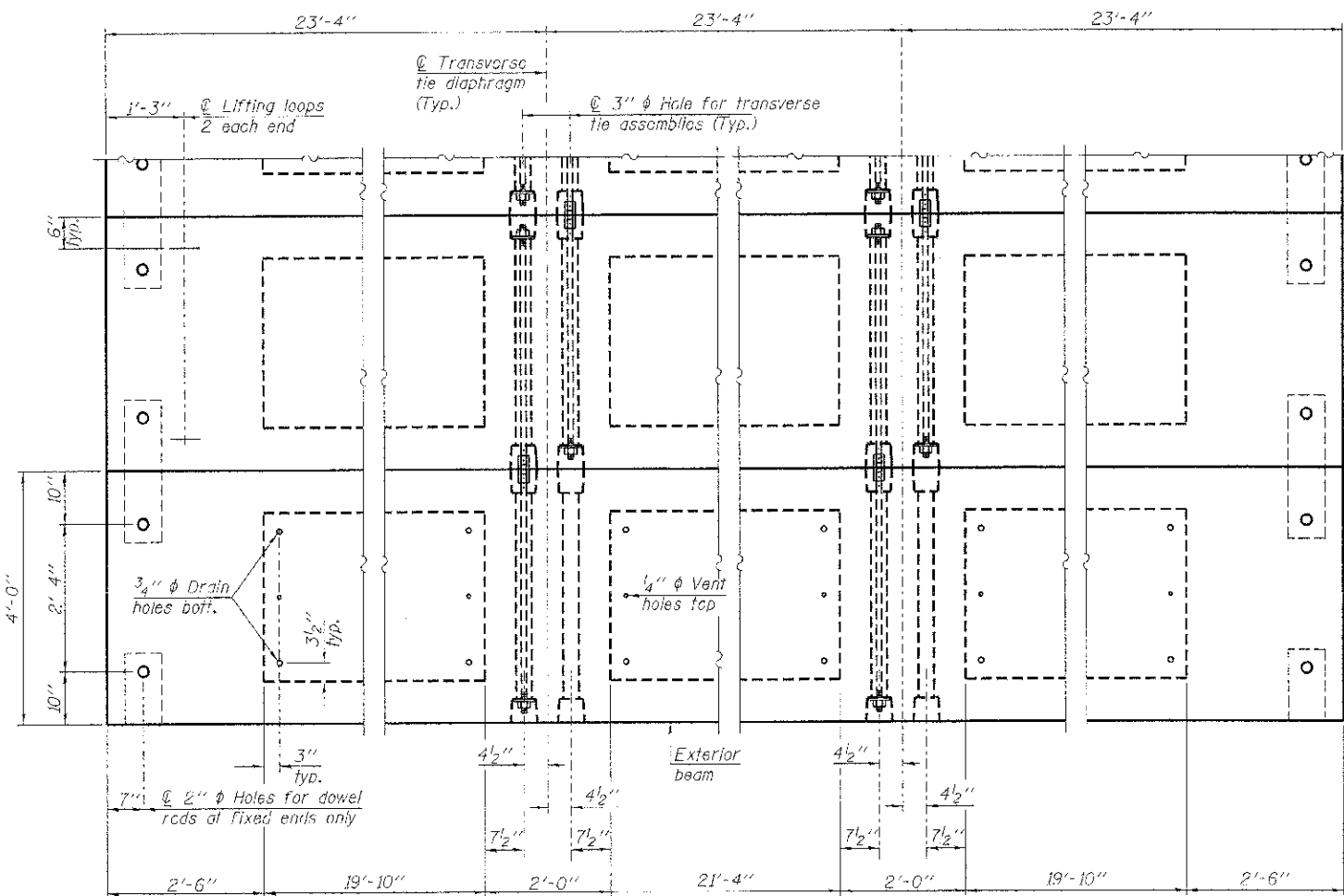
BAR S2(E)



BAR U1(E)

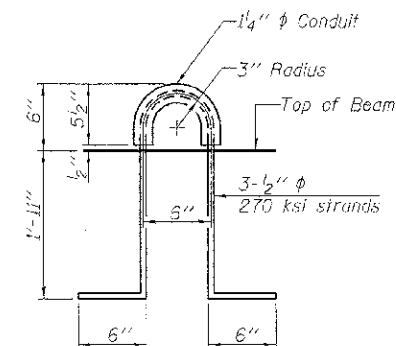


BAR U(E)



PLAN VIEW

Note: Connect beams in pairs with the transverse tie configuration shown.



LIFTING LOOP DETAIL

NOTES

Prestressing steel shall be uncoated high strength, low relaxation 7-wire strand, Grade 270. The nominal diameter shall be 1/2" and the nominal cross-sectional area shall be 0.153 sq. in.
The 1" ϕ rods in the transverse tie assembly shall be lightened to a snug fit and the threads set. Pockets on exterior faces of bridge shall be filled with grout after transverse tie assembly is in place.
Reinforcement bars shall conform to ASTM A 705, Grade 60. (See Special Provisions).
Two 3/8" fabric adjusting shims of the dimensions of the exterior bearing pad shall be provided for each bearing pad location.
A minimum 2 1/2" ϕ lifting pin shall be used to engage the lifting loops during handling.
Corrosion Inhibitor, per Article 1020.05(b)(12) and 1021.07 of the Standard Specifications, shall be used in the concrete for precast prestressed concrete deck beams.
Compressive strength of prestressed concrete, $f'c$, shall be 6000 psi.
Compressive strength of prestressed concrete at release, $f'ci$, shall be 5000 psi.
All bars shall be epoxy coated.

BILL OF MATERIAL

Precast Prestressed Conc. Deck Bms. (27" depth)	Sq. Ft.	1,680
---	---------	-------

PD-2748-0D

7-1-10

FILE NAME = 1182073-sht1-and-edge.dgn	USER NAME =
HAMPTON, LENZINI AND RENWICK, INC. 3330 STEWART DRIVE SUITE 201 SPRINGFIELD, ILLINOIS 62765 ILLINOIS PROFESSIONAL ENGINEER LICENSE 1317 PC 02 0000 184-000005	DESIGNED - A.S.L. CHECKED - S.W.M. DRAWN - D.A.B. CHECKED - S.W.M.
PLCT SCALE =	REVISED -
PLCT DATE = 10/2/2012	REVISED -

STATE OF ILLINOIS
WHITE COUNTY HIGHWAY DEPARTMENT

27" x 48" PPC DECK BEAM DETAILS
STRUCTURE NO. 097-3280

C.H.	SECTION	COUNTY	TOTAL SHEETS	SHEET NO.
1:	10-00118-00-BR	WHITE	12	7
			CONTRACT NO. 99483	
			ILLINOIS FED. AID PROJECT BR05-337059	

SHEET NO. 3 OF 8 SHEETS