

REGULATOR - "HONEYWELL", SERIES 3G,  
 FERRO FAA TYPE L-828, DRY TYPE, 20 kw,  
 60 Hz, 208 VOLT INPUT, 6.6 AMP OUTPUT,  
 3 STEP CONSTANT CURRENT REGULATOR.  
 (EXISTING TO BE USED AS A SPARE)  
 REPAIR AS REQUIRED

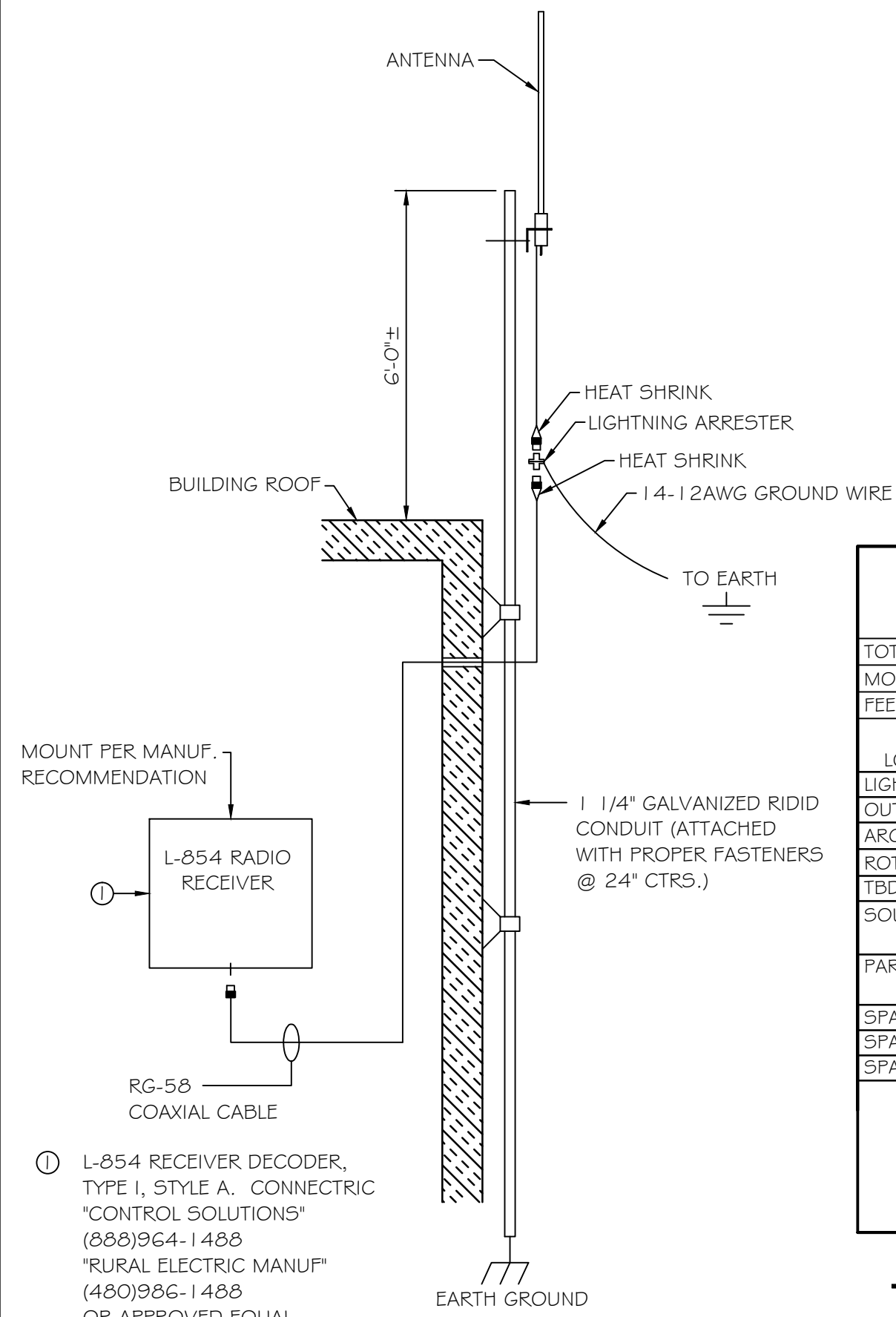
MDP PANEL (PL-1)					
LOAD DESCRIPTION	KW	INPUT	OUTPUT	STEP	AMP
SPARE REGULATOR	20	208V	6.6A	3-STEP	125A
RUNWAY 18-36	20	208V	6.6A	3-STEP	125A
RUNWAY 07-25	20	208V	6.6A	3-STEP	125A
TAXIWAY	10	208V	6.6A	3-STEP	70A
FUTURE	NA	208V	6.6A	---	---
SUB-PANEL	208/120	208V	---	NA	125A

SUB-PANEL (PL-2)											
TOTAL KW: 40.2kw		ENCLOSURE: NEMA-1 PHASE: 1, 3W 4 GRD.				VOLTAGE: 120/208V					
MOUNTING: SURFACE		BUSSING: COPPER				FAULT CURRENT RATING: 22,000 AIC		M.L.O.			
FEEDER: SEE ONE-LINE DIAGRAM		LOCATION: EQUIPMENT SHELTER									
LOAD DESCRIPTION	TRIP	POLE	A--	B--	CCT. NO.	A--	B--	TRIP	POLE	LOAD DESCRIPTION	
LIGHTS	15	1	1,800		1 2	2400		20	1	OUTLETS	
OUTLETS	20	1		2400	3 4		1,800	15	1	ENTRY LIGHT	
ARCL (RADIO RECEIVER)	15	1	1,800		5 6	1,800		15	1	TBD	
ROTATING BEACON	30	1		2800	7 8		2400	20	1	AC / HEATER	
TBD	15	1	1,800		9 10	2000		20	1	WIND CONE	
SOUTH APRON LIGHTS	20	2		2000	11 12		2,800	30	2	NORTH APRON LIGHTS	
				2000	13 14	2,800					
PARKING LOT LIGHTS	50	2		4,800	15 16					SPARE	
				4,800	17 18					SPARE	
SPARE					19 20					SPARE	
SPARE					21 22					SPARE	
SPARE					23 24					SPARE	
					1,200		2,000				9,000
											7,000
											TOTAL= 40,200

**AIRPORT LIGHTING STANDAD OPERATION SEQUENCE :**

1. TYPICAL OPERATIONS - PHOTOCELL ACTIVATES RUNWAY / TAXIWAY LIGHTS, WIND CONE, APRON LIGHTS AND ROTATING BEACON.
2. PHOTOCELL BYPASS - MANUAL SWITCH IN NEW EQUIPMENT BUILDING (LOCATE IN FIELD).
3. SECONDARY PHOTOCELL BYPASS - EXISTING TOGGLE SWITCH LOCATED IN FBO BUILDING. EXTEND TO NEW EQUIPMENT BUILDING AS REQUIRED.

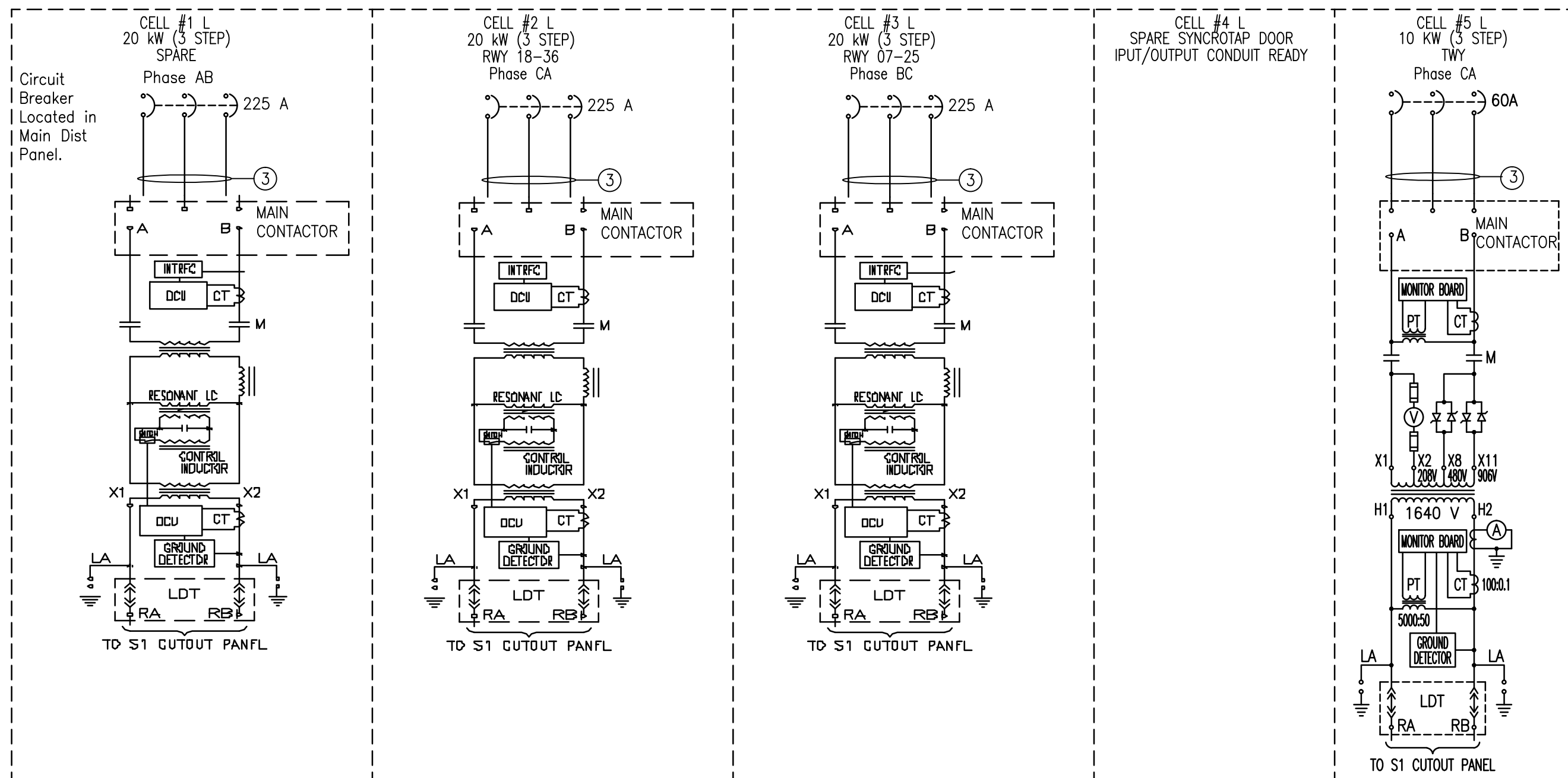
\* CONTRACTORS SHALL VERIFY EXISTING AIRPORT OPERATIONS TO ASSURE THAT ALL NEW LIGHTING EQUIPMENT FUNCTIONS IN THE SAME MANNER.



**ANTENNA INSTALLATION**

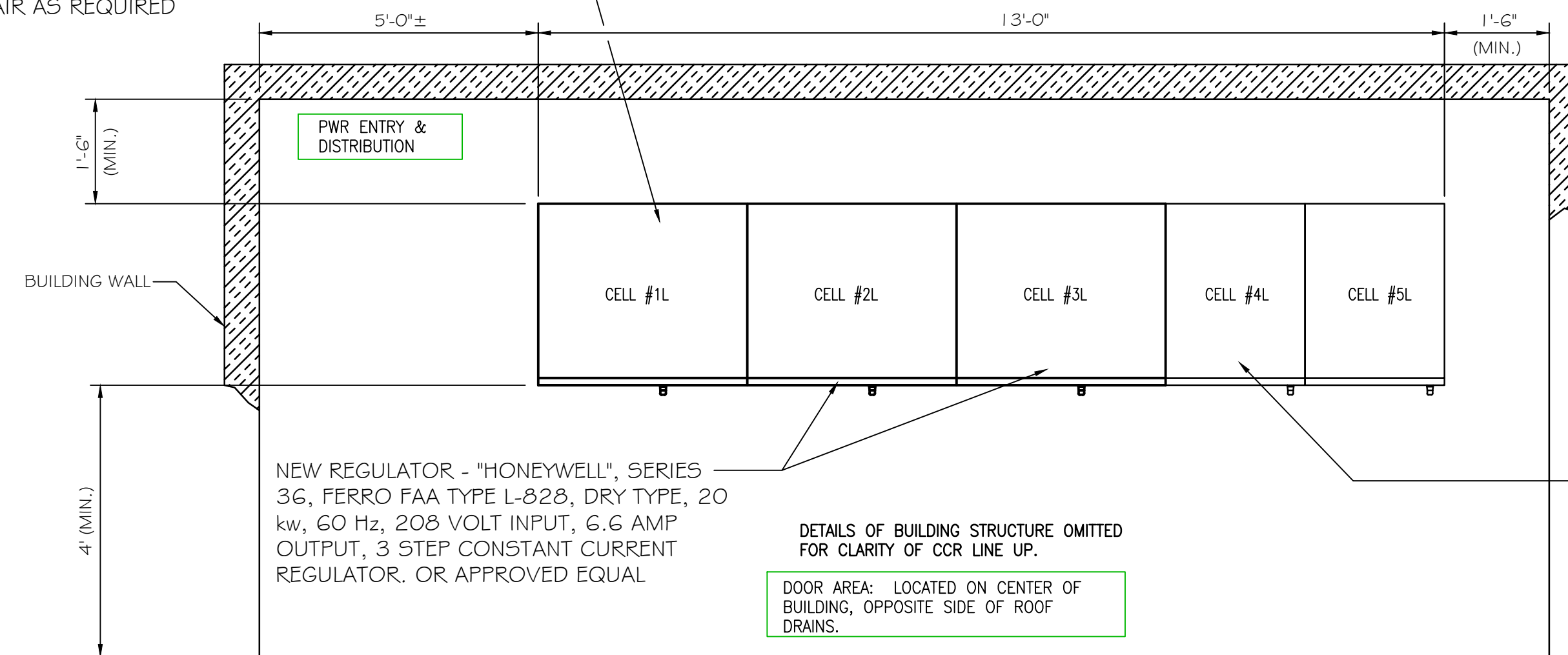
NOT TO SCALE

Remote Control Inputs:  
 ARCAL unit to control all three CCR simultaneously.  
 Parallel each CCR input lines CC, B10, B30, & B100.

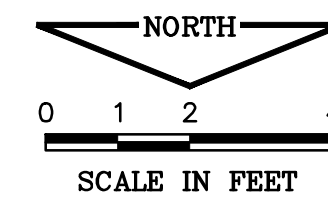


**CONSTANT CURRENT REGULATOR WIRING DIAGRAM**

NOT TO SCALE



**PLAN VIEW - REGULATOR BANK #1**

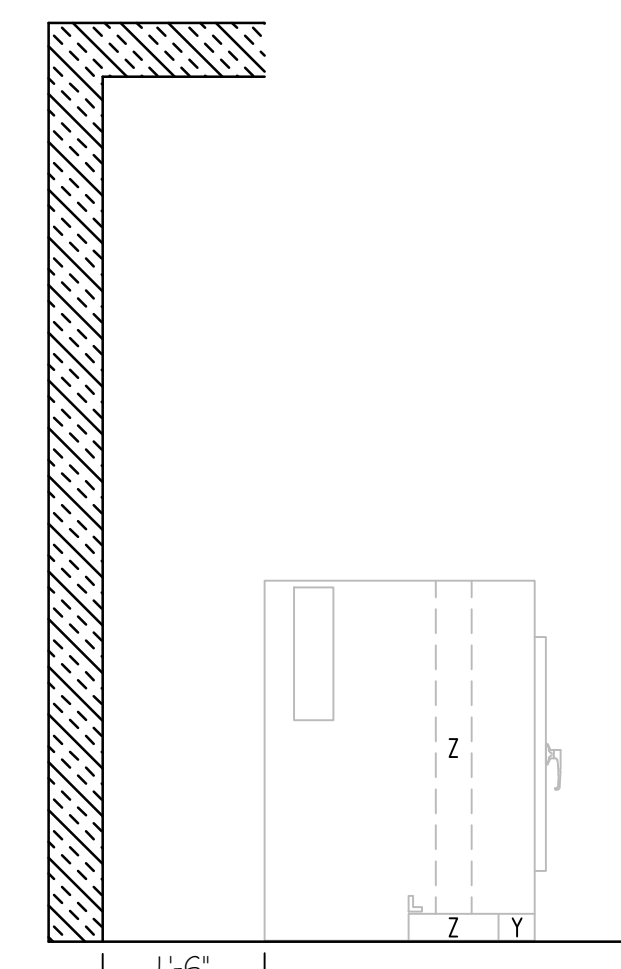


**NOTES:**

- 1 - REGULATOR ENCLOSURE, STANDARD
- 2 - FINISH - EXTERIOR PAINTED LIGHT GREY, EEMAC-2Y-1-1958
- 3 - FLOOR ENTRY FOR INPUT AND OUTPUT
- 4 - POWER SUPPLY, 208V, 3 PH, 3 WIRE, 60 Hz
- 5 - INTERRUPT RATING OF REGULATOR INCOMING BREAKER, 25KA SYM
- 6 - REGULATOR CONTROL POWER SUPPLY IS 24 VDC.

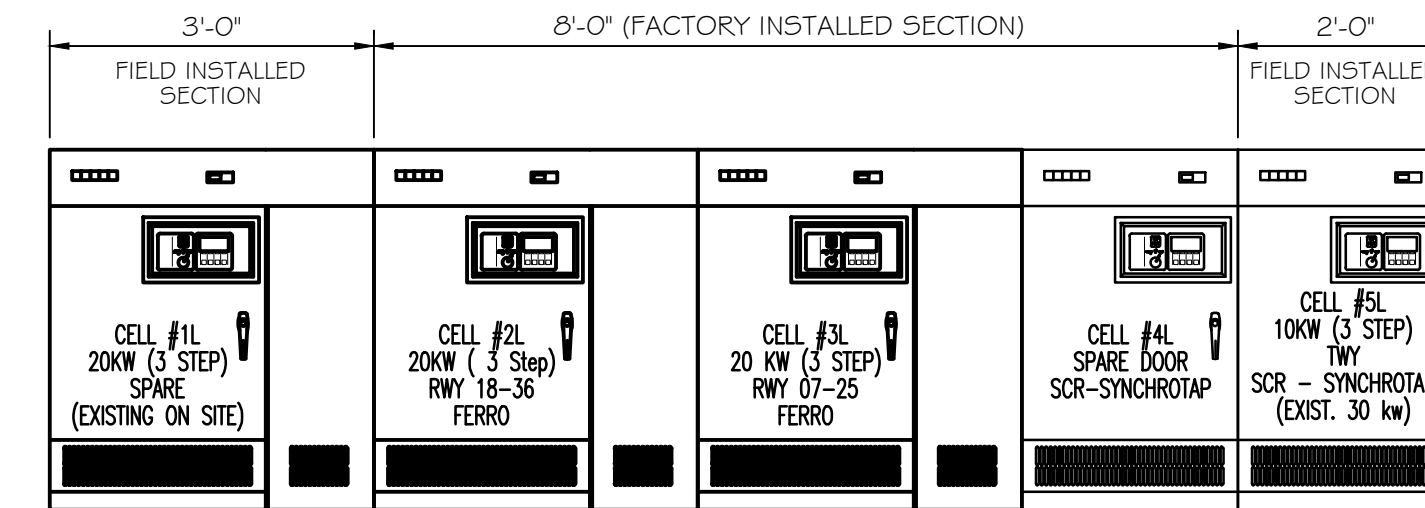
**WIRING DESIGNATIONS**

- X - STANDARD ENTRANCE FOR SERIES LIGHTING CABLE
- Y - REMOTE CONTROL WIRING RACEWAY
- Z - FIELD CABLE RACEWAY

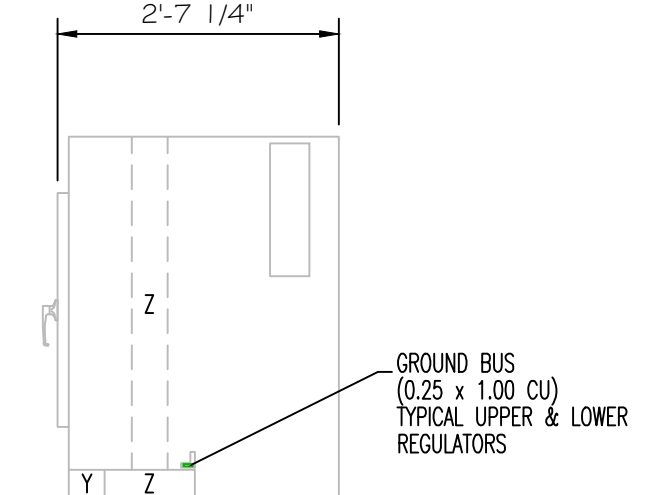


**LEFT SIDE ELEVATION**

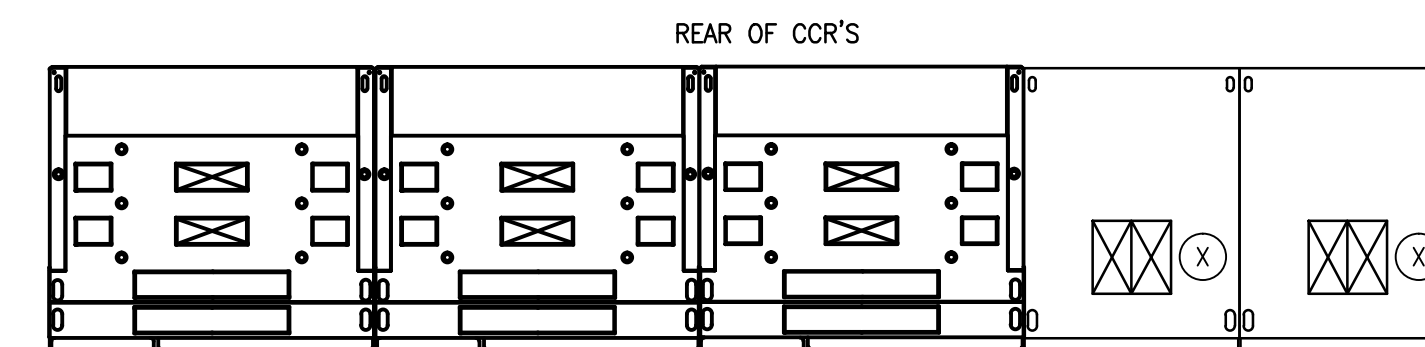
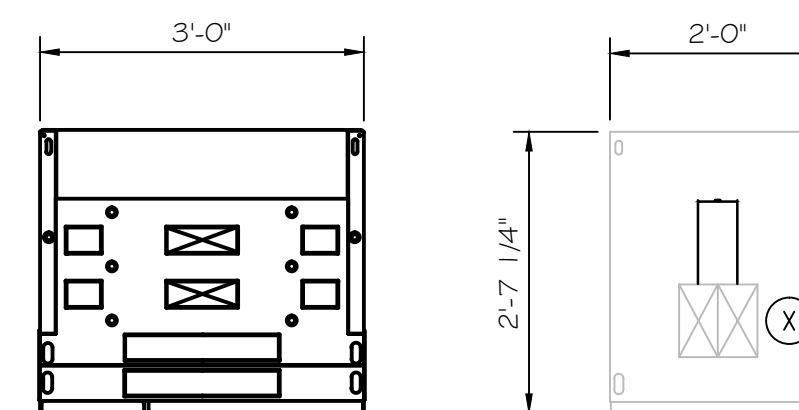
REGULATOR BANK #1 SHOWN GHOSTED FOR REFERENCE ONLY



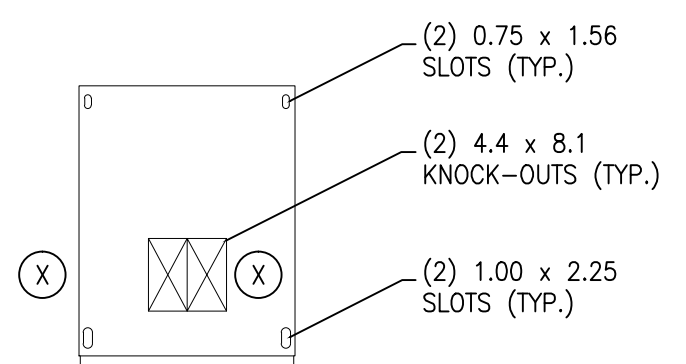
**FRONT ELEVATION - REGULATOR BANK #1**



**RIGHT SIDE ELEVATION**



**BASE PLAN (UNDERSIDE VIEW)**



CHAMLIN & ASSOCIATES, INC. © 2011

DRAWN BY: Tim H	REVISIONS			
CHECKED BY: RJC	LEVEL	BY	DATE	DESCRIPTION
DATE: NOVEMBER 2012				

**CHAMLIN ASSOCIATES**  
 PERU MORRIS ILLINOIS

ILLINOIS VALLEY REGIONAL AIRPORT (VYS)  
 SEPARATE RUNWAY CIRCUITS AND CONSTRUCT VAULT  
 PERU, ILLINOIS

PROPOSED ELECTRICAL EQUIPMENT

CONSTRUCTION PLANS

CURRENT AS OF: 11/16/2012	
SCALE: As Noted	SHEET 10
FILE NO.: 1000.96	OF 10