

STATE OF ILLINOIS  
DEPARTMENT OF TRANSPORTATION

F.A.S. RTE.	SECTION	COUNTY	TOTAL SHEETS	SHEET NO.
268A	(1B-1)BC, BDS	LA SALLE	10	1
ILLINOIS			CONTRACT NO. 66H86	

**INDEX OF SHEETS**

- 1 COVER SHEET
- 2 GENERAL NOTES
- 3 SUMMARY OF QUANTITIES
- 4 SCHEDULES
- 5-6 EXISTING STRUCTURE PLANS (FOR INFORMATION ONLY)
- 7-9 CONCRETE SEALER DETAILS
- 10 TEMPORARY INFORMATION SIGNING DETAILS

**LIST OF ILLINOIS DOT HIGHWAY STANDARDS**

- 000001-06 STANDARD SYMBOLS, ABBREVIATIONS AND PATTERNS
- 001006 DECIMAL OF AN INCH AND OF A FOOT
- 701101-05 OFF-ROAD OPERATIONS, MULTILANE, 15' (4.5 m) TO 24' (600 mm) FROM PAVEMENT EDGE
- 701106-02 OFF-ROAD OPERATIONS, MULTILANE, MORE THAN 15' (4.5 m) AWAY
- 701501-06 URBAN LANE CLOSURE, 2L, 2W, UNDIVIDED
- 701801-06 SIDEWALK, CORNER OR CROSSWALK CLOSURE
- 701901-07 TRAFFIC CONTROL DEVICES

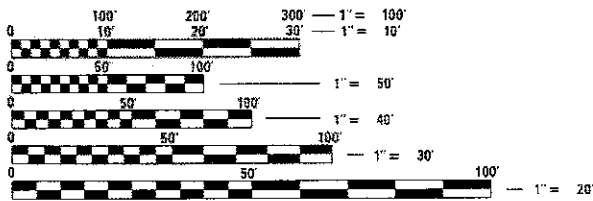
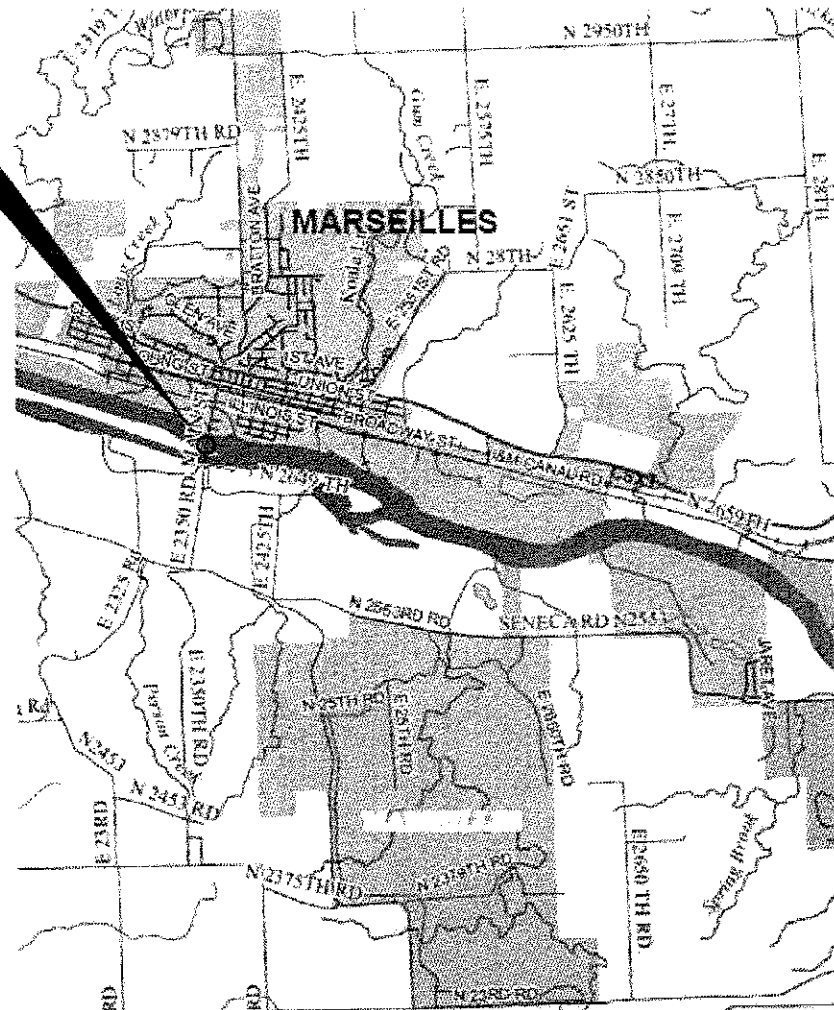
**PROPOSED  
HIGHWAY PLANS**

F.A.S. 268A (CH 15)  
SECTION (1B-1)BC, BDS  
PROJECT STP- PDL9(007)  
BRIDGE WASHING & CONCRETE SEALING  
LA SALLE COUNTY

C-93-023-18

**PROJECT LOCATION**

STRUCTURE NO. 050-0219  
CARRYING FAS ROUTE 268 (CH 15) OVER  
THE ILLINOIS RIVER APPROXIMATELY 0.4 MILES  
SOUTH OF US 6 IN MARSEILLES

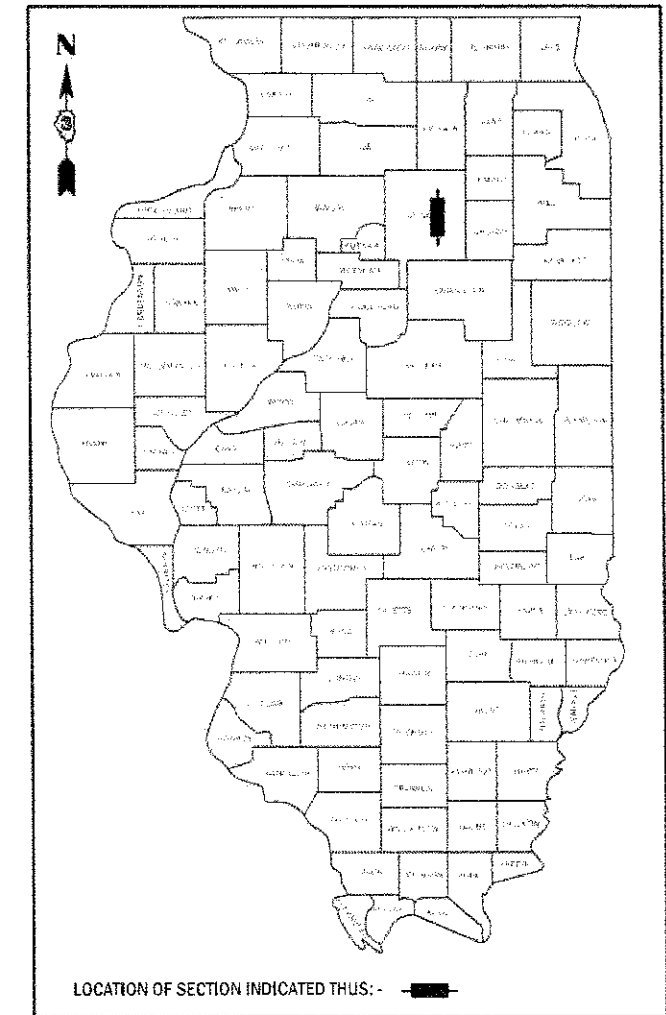


FULL SIZE PLANS HAVE BEEN PREPARED USING STANDARD ENGINEERING SCALES. REDUCED SIZED PLANS WILL NOT CONFORM TO STANDARD SCALES. IN MAKING MEASUREMENTS ON REDUCED PLANS, THE ABOVE SCALES MAY BE USED.

J.U.L.I.E.  
JOINT UTILITY LOCATION INFORMATION FOR EXCAVATION  
1-800-892-0123  
OR 811

PROJECT ENGINEER: JOE KANNEL, P.E.  
UNIT CHIEF: RON WOODSHANK  
DISTRICT NO. 3 (815) 434-6131  
CONTRACT NO. 66H86

GROSS LENGTH = 1903 FT. = 0.36 MILE  
NET LENGTH = 1903 FT. = 0.36 MILE



LOCATION OF SECTION INDICATED THIS: -

FUNCTIONAL CLASSIFICATION  
MAJOR COLLECTOR  
F.A.S. ROUTE 268 (CH 15)  
2016 ADT 4450  
P.V. 90.5% S.U. 7.9% M.U. 1.6%

STATE OF ILLINOIS  
DEPARTMENT OF TRANSPORTATION

SUBMITTED Oct 17 2017  
*[Signature]*  
REGIONAL ENGINEER

Nov 30 2017  
*[Signature]*  
ENGINEER OF DESIGN AND ENVIRONMENT

Nov 30 2017  
*[Signature]*  
DIRECTOR OF PROGRAM DEVELOPMENT

PRINTED BY THE AUTHORITY  
OF THE STATE OF ILLINOIS

**GENERAL NOTES**

FOR STABILIZATION, ALL TYPE III BARRICADES WILL REQUIRE A MINIMUM OF FOUR SAND BAGS PER BARRICADE

ANY REFERENCE TO A STANDARD IN THESE PLANS SHALL BE INTERPRETED TO MEAN THE EDITION AS INDICATED BY THE SUBNUMBER SHOWN IN THE LIST OF STANDARDS OR THE COPY INCLUDED IN THESE PLANS

**COMMITMENTS**

STATE OF ILLINOIS  
DEPARTMENT OF TRANSPORTATION  
DISTRICT THREE  
AS BUILT INFORMATION

START & END DATES  
OF CONSTRUCTION:

INSPECTORS:

\_\_\_\_\_  
SUPERVISING CONSTRUCTION FIELD ENGINEER

\_\_\_\_\_  
RESIDENT ENGINEER / TECHNICIAN

DATE: 10/17/17

PREPARED BY: David Brouil  
DISTRICT STUDIES & PLANS ENGINEER

EXAMINED BY: [Signature]  
DISTRICT CONSTRUCTION ENGINEER

Michael A. Short  
DISTRICT MATERIALS ENGINEER

Ken Haggard  
DISTRICT OPERATIONS ENGINEER

FILE NAME =	USER NAME = ywoodshankl	DESIGNED - ECP	REVISED -
path:\D:\4E\BGM\TEG\Woods\pwr\DOT\Drawings\DOT\Drawings\3\Projects\0366H86\CADD\Info\0366H86-draw.dwg		DRAWN - ECP	REVISED -
Default	PLOT SCALE = 100.0000' / in.	CHECKED - RW	REVISED -
	PLOT DATE = 10/11/2017	DATE - 9/20/17	REVISED -

STATE OF ILLINOIS  
DEPARTMENT OF TRANSPORTATION

**GENERAL NOTES**

SCALE: \_\_\_\_\_ SHEET 1 OF 1 SHEETS STA. \_\_\_\_\_ TO STA. \_\_\_\_\_

F.A.S. RTE.	SECTION	COUNTY	TOTAL SHEET (SHEETS) NO.
268A	(18-1)BC, BDS	LA SALLE	10   2
			CONTRACT NO. 66H86
ILLINOIS   FED. AID PROJ. 57			

CONSTR. CODE  
 MBPM  
 80%FED 20%STATE  
 BRIDGE  
 0047  
 S.N.050-0219

CODE NO.	ITEM	UNIT	TOTAL QUANTITY	
X5870015	BRIDGE DECK CONCRETE SEALER	SQ FT	86453	86453
59200101	BRIDGE WASHING NO. 1	EACH	1	1
67100100	MOBILIZATION	L SUM	1	1
70102620	TRAFFIC CONTROL AND PROTECTION, STANDARD 701501	L SUM	1	1
70102640	TRAFFIC CONTROL AND PROTECTION, STANDARD 701801	L SUM	1	1
Z0030850	TEMPORARY INFORMATION SIGNING	SQ FT	42	42

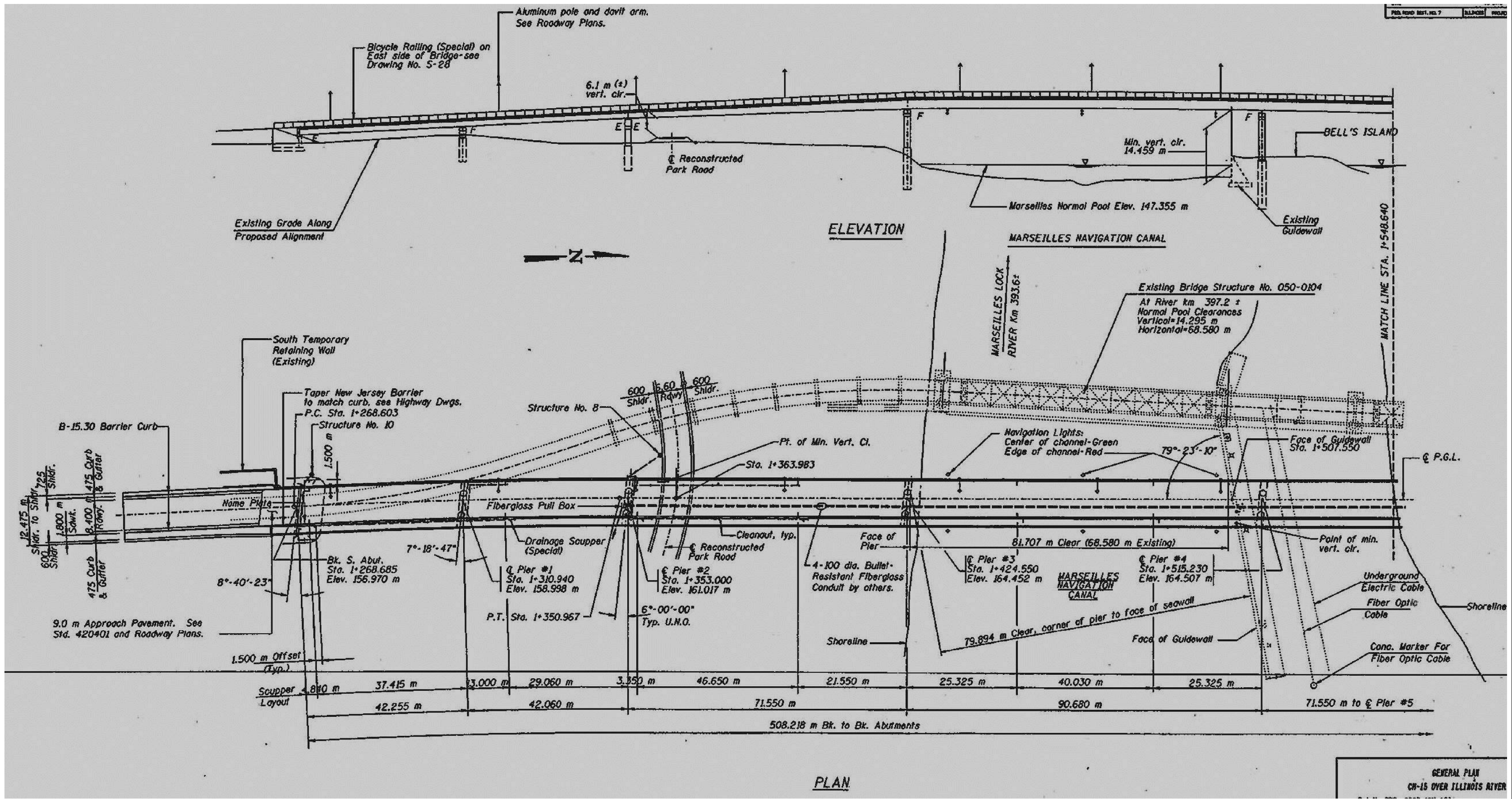
6

FILE NAME =	USER NAME = woodshankri	DESIGNED - ECP	REVISED - _____	<b>STATE OF ILLINOIS DEPARTMENT OF TRANSPORTATION</b>	<b>SUMMARY OF QUANTITIES</b>	F.A.S. RTE.	SECTION	COUNTY	TOTAL SHEETS	SHEET NO.	
pw\ill084EBID\INTEG.illinois.gov\PIWIDOT\Documents\ID	DT Offices\District 9\Projects\0366\H86\CADD\data\0366\H86-deta	DRAWN - ECP	REVISED - _____			268A	(18-1)BC, BDS	LA SALLE	10	3	
Default	PLOT SCALE = 100.0000' / in.	CHECKED - RW	REVISED - _____			CONTRACT NO. 66H86					
	PLOT DATE = 10/11/2017	DATE - 9/20/17	REVISED - _____			SCALE: _____	SHEET 1 OF 1 SHEETS	STA. _____ TO STA. _____	ILLINOIS FED. AID PROJECT		

REV

**SCHEDULE - CONCRETE SEALER**

LOCATION				CONCRETE SEALER																		
				S. ABUT. SQ FT	N. ABUT. SQ FT	PIER 1 SQ FT	PIER 2 SQ FT	PIER 3 SQ FT	PIER 4 SQ FT	PIER 5 SQ FT	PIER 6 SQ FT	PIER 7 SQ FT	PIER 8 SQ FT	NB SIDEWALK SQ FT	NB PARAPET SQ FT	NB SHOULDER SQ FT	NB LANE SQ FT	SB LANE SQ FT	SB SHOULDER SQ FT	SB PARAPET SQ FT	HUB GUARD SQ FT	LIGHT BASE SQ FT
STA. 40+35	TO	STA. 41+33																				
STA. 41+33	TO	STA. 58+58												10350	11213	5175	20700	20700	5175	6383	3450	24
STA. 58+58	TO	STA. 59+38													174					296		
STA. 41+63			88																			
STA. 43+01					242																	
STA. 44+39						247																
STA. 46+74							262															
STA. 49+71								263														
STA. 52+06									269													
STA. 53+62										263												
STA. 55+17											263											
STA. 56+72												263										
STA. 58+28																						
SUBTOTAL			88	109	242	247	262	263	269	263	263	263	10350	11750	5175	20700	20700	5175	6860	3450	24	
TOTAL			86453																			



PLAN

GENERAL PLAN  
CH-15 OVER ILLINOIS RIVER

FOR INFORMATION ONLY

MODEL: Default  
 FILE: \\nas01\proj\illinois\proj\p1001\Documents\1001\_CAD\Drawings\1001\_CAD\1001\_CAD.dwg  
 PROJECT: 10/11/2017

USER NAME = woodshankr	DESIGNED - ECP	REVISED -
DRAWN - ECP	REVISED -	
PLOT SCALE = 100,0000' / in.	CHECKED - RW	REVISED -
PLOT DATE = 10/11/2017	DATE - 10/2/17	REVISED -

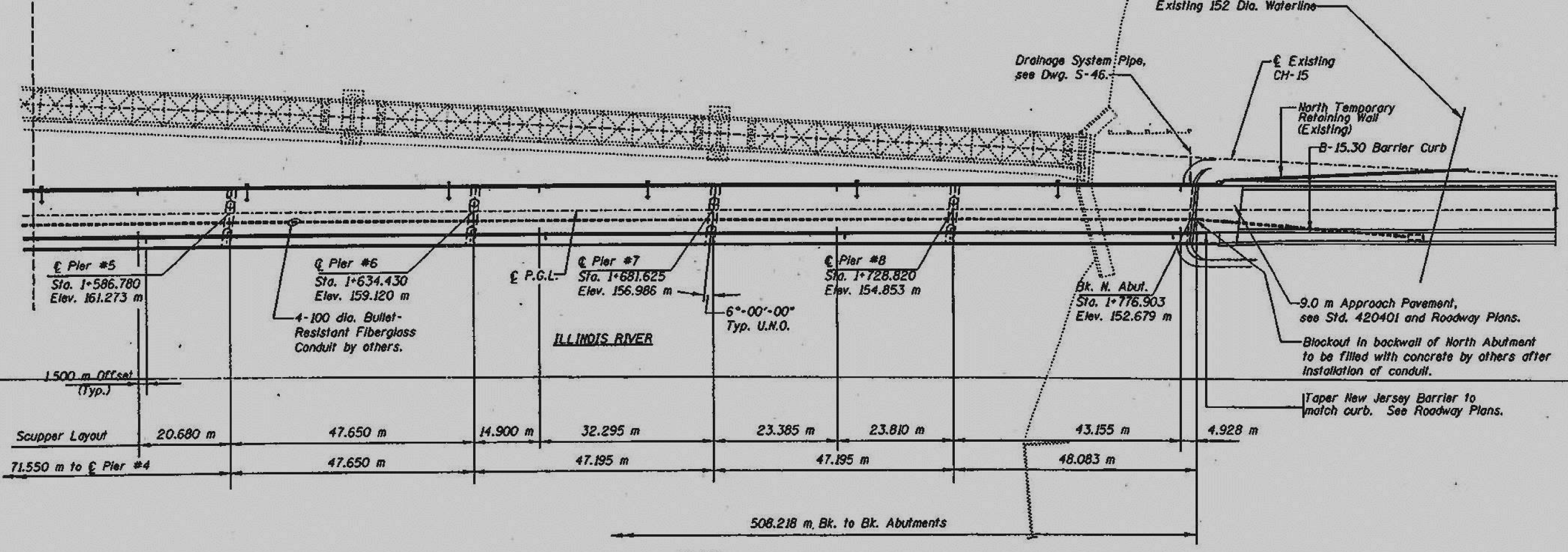
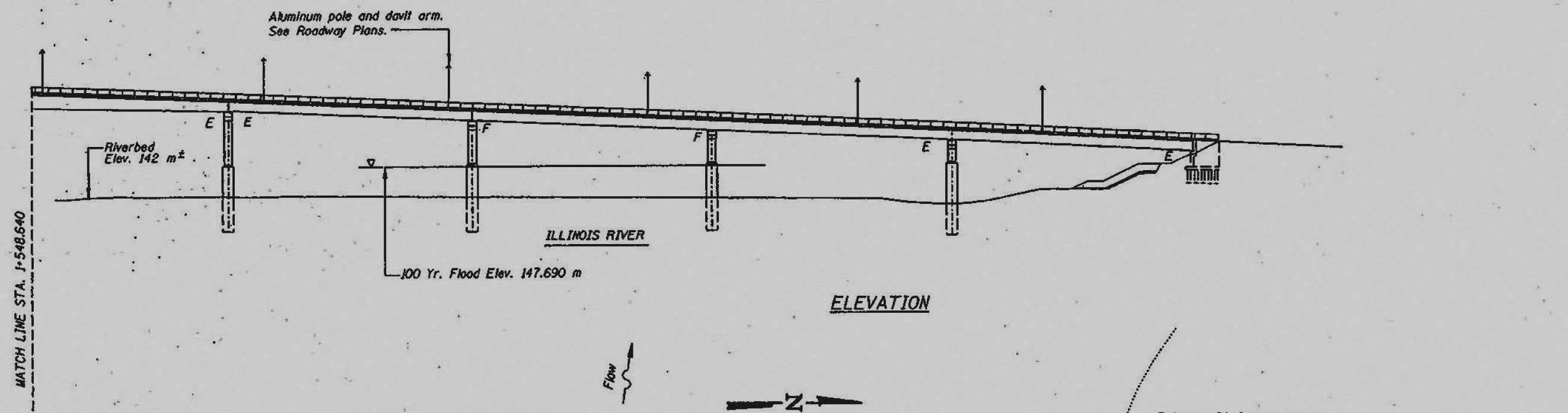
STATE OF ILLINOIS  
DEPARTMENT OF TRANSPORTATION

EXISTING STRUCTURE PLANS  
FOR INFORMATION ONLY

SCALE: \_\_\_\_\_ SHEET 1 OF 2 SHEETS STA. 40+35 TO STA. 50+80

F.A.S. RTE.	SECTION	COUNTY	TOTAL SHEETS	SHEET NO.
268A	(18-1)BC,BDS	LA SALLE	10	5
CONTRACT NO. 66H86				
ILLINOIS FED. AID PROJECT				





FOR INFORMATION ONLY

MODEL: Default  
 FILE: \\nas102\B048E\BID\ITEC\Illinois.gov\FW\DOT\Documents\BID\Office\BID\B048E\BID\B048E-66H86.dwg  
 PROJECT: D:\B048E\BID\B048E-66H86.dwg

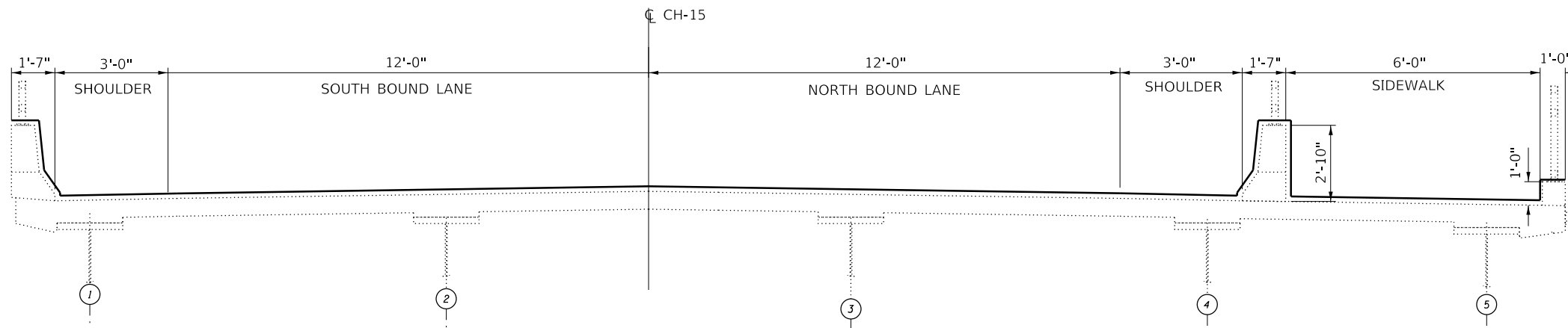
USER NAME = woodshankr	DESIGNED - ECP	REVISED - _____
DRAWN - ECP	REVISIONS - _____	
PLOT SCALE = 100,0000' / in.	CHECKED - RW	REVISIONS - _____
PLOT DATE = 10/11/2017	DATE - 10/2/17	REVISIONS - _____

STATE OF ILLINOIS  
DEPARTMENT OF TRANSPORTATION

EXISTING STRUCTURE PLANS  
FOR INFORMATION ONLY

SCALE: \_\_\_\_\_ SHEET 2 OF 2 SHEETS STA. 50+80 TO STA. 59+38

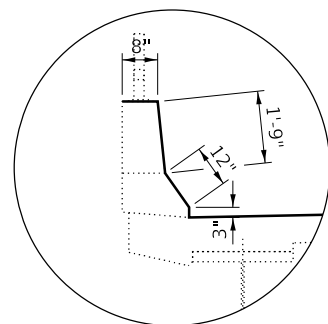
F.A.S. RTE.	SECTION	COUNTY	TOTAL SHEETS	SHEET NO.
268A	(1B-1)BC,BDS	LA SALLE	10	6
CONTRACT NO. 66H86				
ILLINOIS FED. AID PROJECT				



**DECK CROSS SECTION**

STA. 41+33 TO STA. 58+58

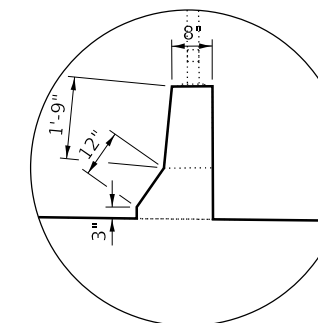
\*STA. 58+28 = BK. N. ABUT.  
 NORTH APPROACH = STA. 58+28 TO STA. 58+58  
 STA. 41+63 = BK. S. ABUT.  
 SOUTH APPROACH = STA. 41+33 TO STA. 41+63



**PARAPET DETAIL**

TYPICAL

**CONCRETE SEALER**



**PARAPET DETAIL**

TYPICAL

MODEL: Default  
 FILE NAME: P:\1108\B&E\BIDD\TEC\Illinois\pov\PW\DOT\Documents\1\DOT\_Offices\1\1108\CADD\1108\1108-1108-1108-1108.dgn

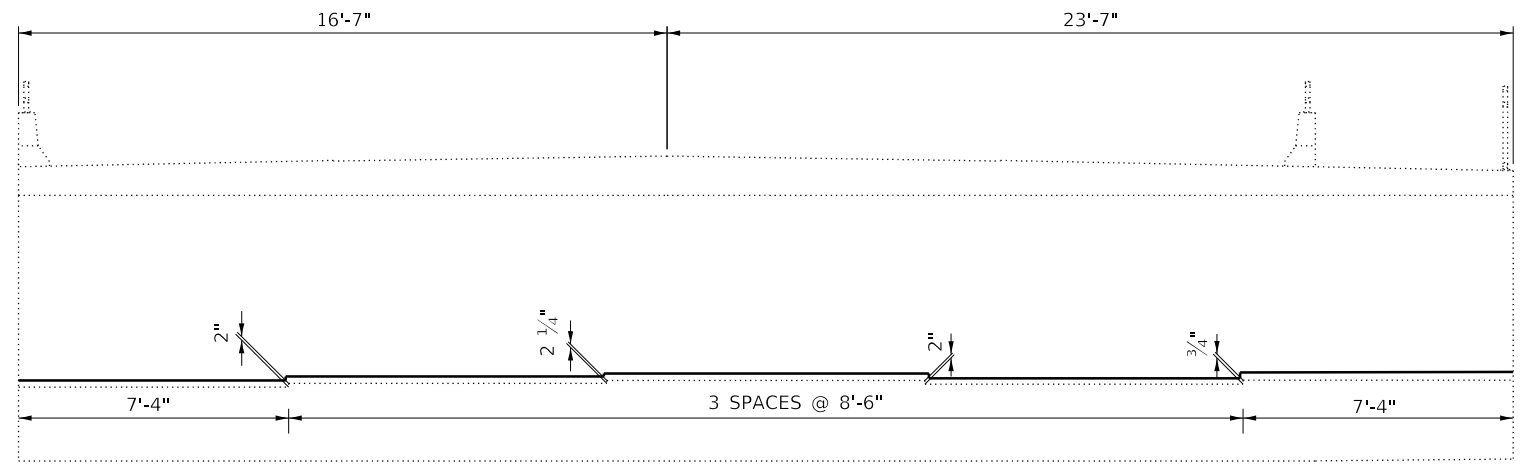
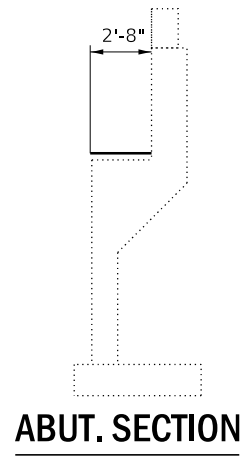
USER NAME = woodshankr	DESIGNED - ECP	REVISED - _____
	DRAWN - ECP	REVISED - _____
PLOT SCALE = 100.0000' / in.	CHECKED - RW	REVISED - _____
PLOT DATE = 10/11/2017	DATE - 9/20/2017	REVISED - _____

**STATE OF ILLINOIS  
 DEPARTMENT OF TRANSPORTATION**

**CONCRETE SEALER DETAILS  
 (DECK CROSS SECTIONS)**

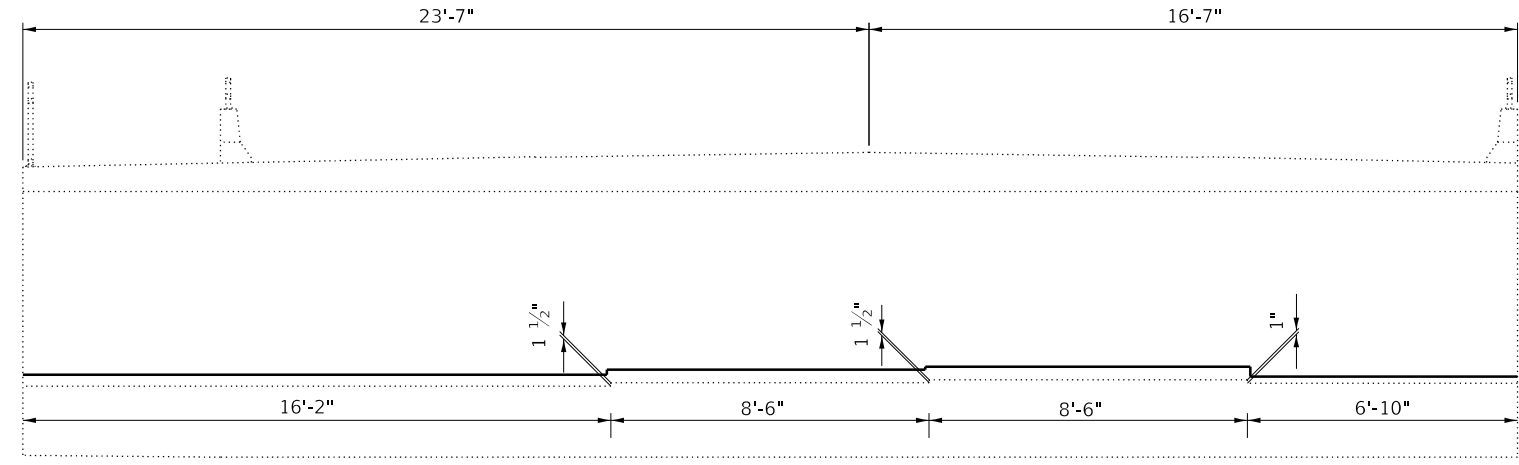
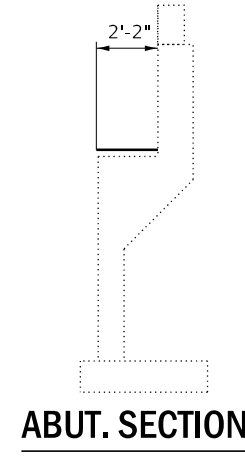
SCALE: \_\_\_\_\_ SHEET 1 OF 3 SHEETS STA. \_\_\_\_\_ TO STA. \_\_\_\_\_

F.A.S. RTE.	SECTION	COUNTY	TOTAL SHEETS	SHEET NO.
268A	(1B-1)BC,BDS	LA SALLE	10	7
CONTRACT NO. 66H86			ILLINOIS FED. AID PROJECT	



**NORTH ABUTMENT**  
LOOKING NORTH

CONCRETE SEALER



**SOUTH ABUTMENT**  
LOOKING SOUTH

MODEL: Default  
 FILE NAME: P:\ILLINOIS\BID\NTEC\Illinois.gov\PI\DOT\Documents\DOT\_Offices\Director\_3\Projects\0366106\CADD\0366106-04\0366106-04.dwg

USER NAME = woodshankr	DESIGNED - ECP	REVISED - _____
DRAWN - ECP	REVISOR - _____	REVISOR - _____
PLOT SCALE = 100.0000' / in.	CHECKED - RW	REVISOR - _____
PLOT DATE = 10/11/2017	DATE - 9/20/2017	REVISOR - _____

**STATE OF ILLINOIS**  
**DEPARTMENT OF TRANSPORTATION**

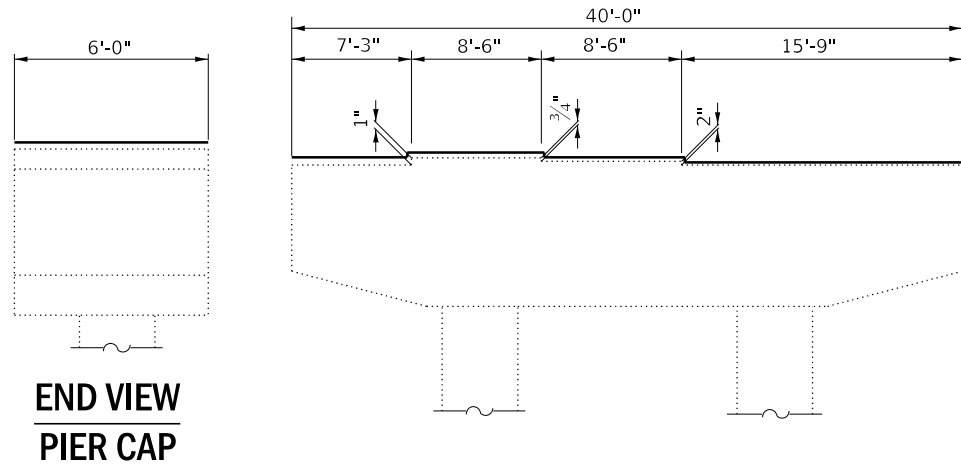
**CONCRETE SEALER DETAILS**  
**(STRUCTURE DETAILS)**

SCALE: \_\_\_\_\_ SHEET 2 OF 3 SHEETS STA. \_\_\_\_\_ TO STA. \_\_\_\_\_

F.A.S. RTE.	SECTION	COUNTY	TOTAL SHEETS	SHEET NO.
268A	(1B-1)BC,BDS	LA SALLE	10	8
CONTRACT NO. 66H86				

ILLINOIS FED. AID PROJECT

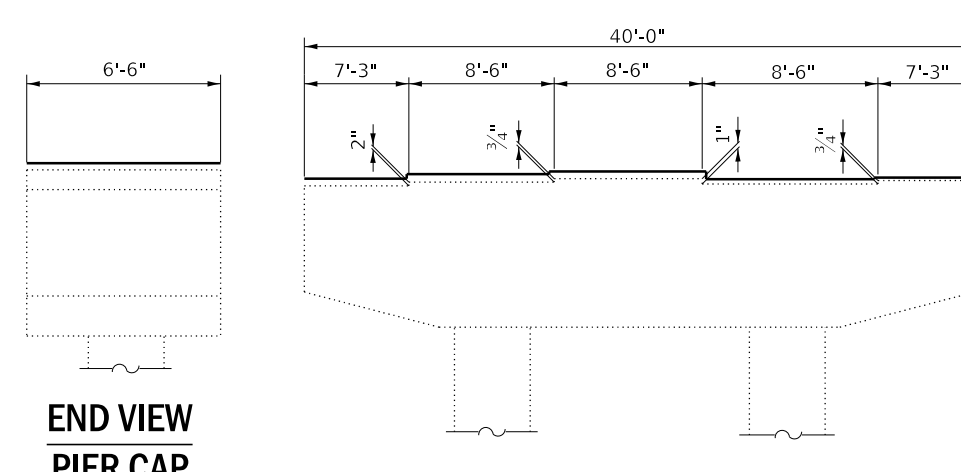




**END VIEW  
PIER CAP**

**PIER 1 ELEVATION**

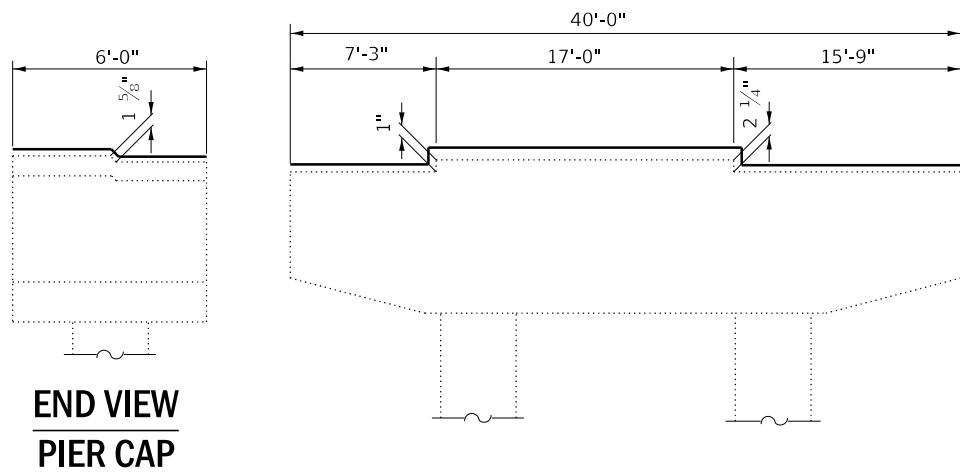
LOOKING NORTH



**END VIEW  
PIER CAP**

**PIER 4 ELEVATION**

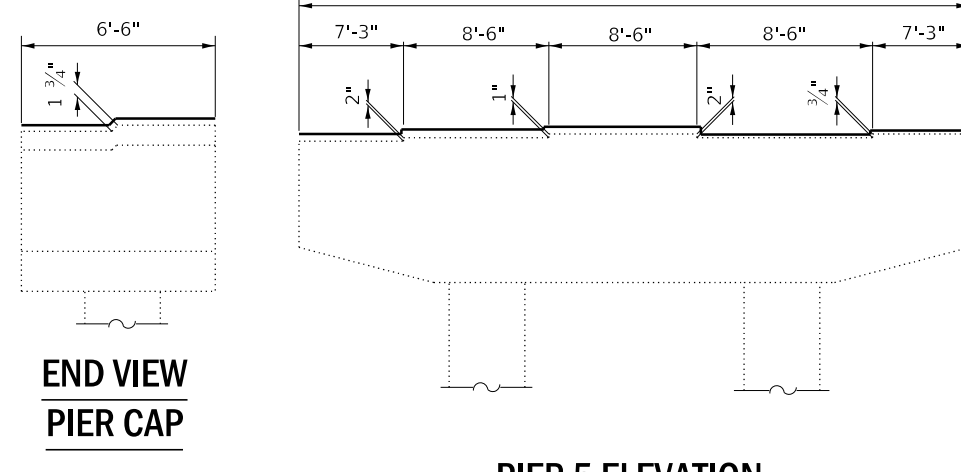
LOOKING NORTH



**END VIEW  
PIER CAP**

**PIER 2 ELEVATION**

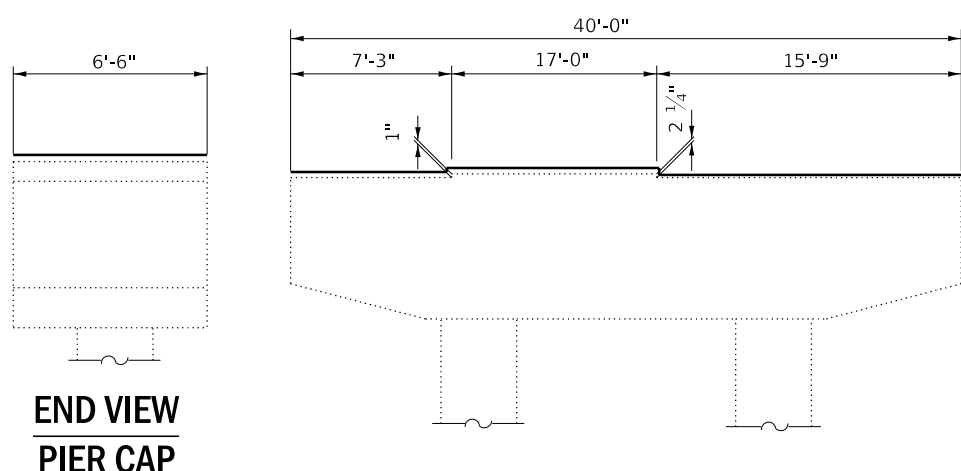
LOOKING NORTH



**END VIEW  
PIER CAP**

**PIER 5 ELEVATION**

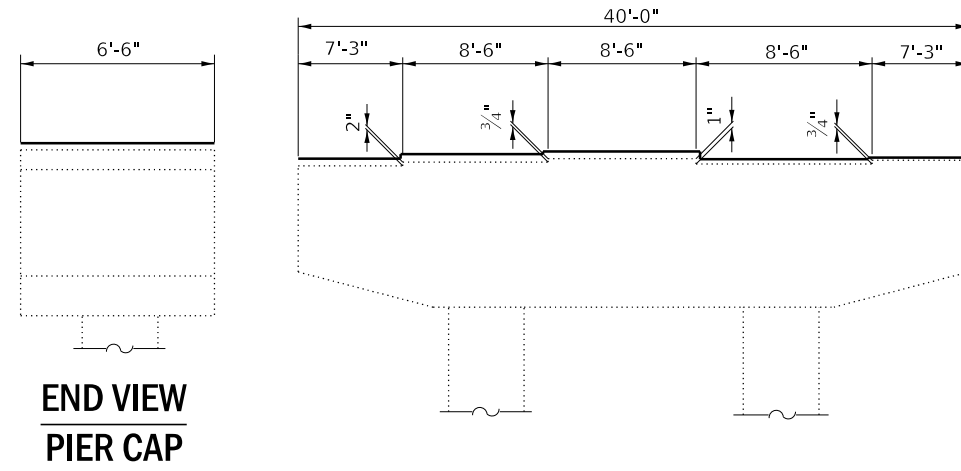
LOOKING NORTH



**END VIEW  
PIER CAP**

**PIER 3 ELEVATION**

LOOKING NORTH



**END VIEW  
PIER CAP**

**PIER 6 & 7 & 8 ELEVATION**

LOOKING NORTH

**CONCRETE SEALER**

**STATE OF ILLINOIS  
DEPARTMENT OF TRANSPORTATION**

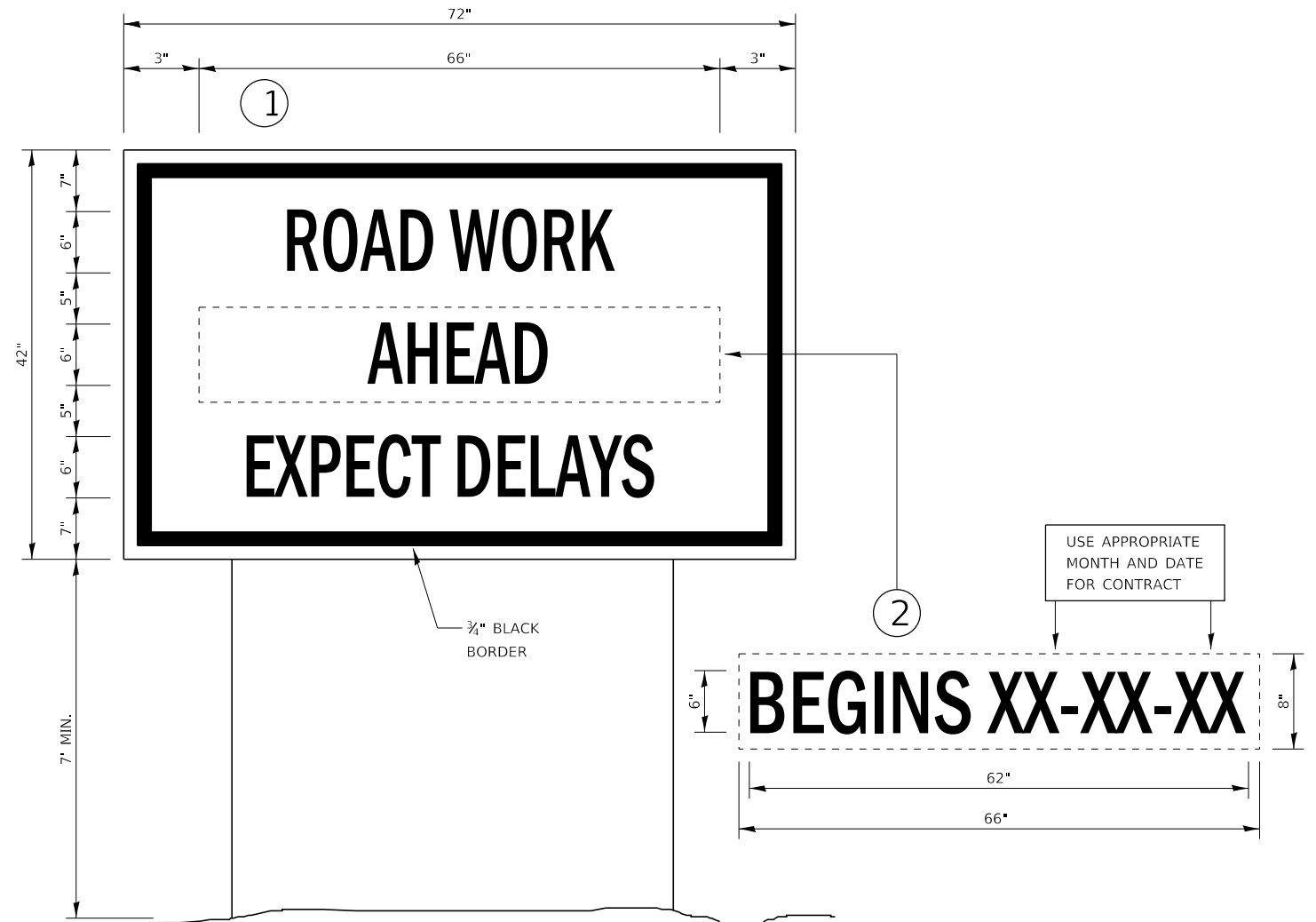
**CONCRETE SEALER DETAILS  
(STRUCTURE DETAILS)**

USER NAME = woodshankr	DESIGNED - ECP	REVISED - _____
DRAWN - ECP	REVISIONS - _____	
PLOT SCALE = 100.0000' / in.	CHECKED - RW	REVISIONS - _____
PLOT DATE = 10/11/2017	DATE - 9/20/2017	REVISIONS - _____

SCALE: \_\_\_\_\_ SHEET 3 OF 3 SHEETS STA. \_\_\_\_\_ TO STA. \_\_\_\_\_

F.A.S. RTE. 268A	SECTION (1B-1)BC,BDS	COUNTY LA SALLE	TOTAL SHEETS 10	SHEET NO. 9
ILLINOIS FED. AID PROJECT			CONTRACT NO. 66H86	

MODEL: Default  
 FILE NAME: P:\ILLINOIS\BID\NTEC\Illinois.gov\FWIDOT\Documents\BIDD\Office\BIDD\CT 3\Projects\0366186\CADD\0366186-detailed.dgn



### TEMPORARY INFORMATION SIGNING

**NOTES:**

1. USE 6" D BLACK LETTERING ON FLUORESCENT ORANGE BACKGROUND.
2. ERECT SIGNS AT LOCATIONS IN ADVANCE OF THE "ROAD CONSTRUCTION AHEAD" SIGNS AS DIRECTED BY THE ENGINEER.
3. ERECT SIGN ① WITH INSTALLED PANEL ② A MINIMUM OF ONE WEEK PRIOR TO THE START OF THE LANE CLOSURE.
4. REMOVE PANEL ② ON THAT DATE.
5. SEE SPECIAL PROVISION "TEMPORARY INFORMATION SIGNING" FOR ADDITIONAL INFORMATION.
6. WILL BE PAID FOR PER SQ FT AS "TEMPORARY INFORMATION SIGNING". EACH SIGN = 21 SQ FT AND THE DATE PANEL ② WILL NOT BE MEASURED SEPARATELY FOR PAYMENT.

MODEL: Default  
 FILE: \\nas101.pva\illinois\BID\NTEC\Illinois\gov\PIVDOT\Documents\DOT\_Offices\Director\3\Projects\0366186\CADD\0366186-04\table.dgn

USER NAME = woodshankr	DESIGNED - ECP	REVISED - _____
	DRAWN - ECP	REVISED - _____
PLOT SCALE = 100.0000 ' / in.	CHECKED - RW	REVISED - _____
PLOT DATE = 10/11/2017	DATE - 9/20/17	REVISED - _____

**STATE OF ILLINOIS  
DEPARTMENT OF TRANSPORTATION**

**TEMPORARY INFORMATION SIGNING**

SCALE: SHEET 1 OF 1 SHEETS STA. \_\_\_\_\_ TO STA. \_\_\_\_\_

F.A.S. RTE.	SECTION	COUNTY	TOTAL SHEETS	SHEET NO.
268A	(1B-1)BC,BDS	LA SALLE	10	10
CONTRACT NO. 66H86			ILLINOIS FED. AID PROJECT	