

STATE OF ILLINOIS
DEPARTMENT OF TRANSPORTATION

F.A.S. RTE.	SECTION	COUNTY	TOTAL SHEETS	SHEET NO.
1774	(OLD IL 121)	LOGAN	5	1
		ILLINOIS	CONTRACT NO. 72K19	

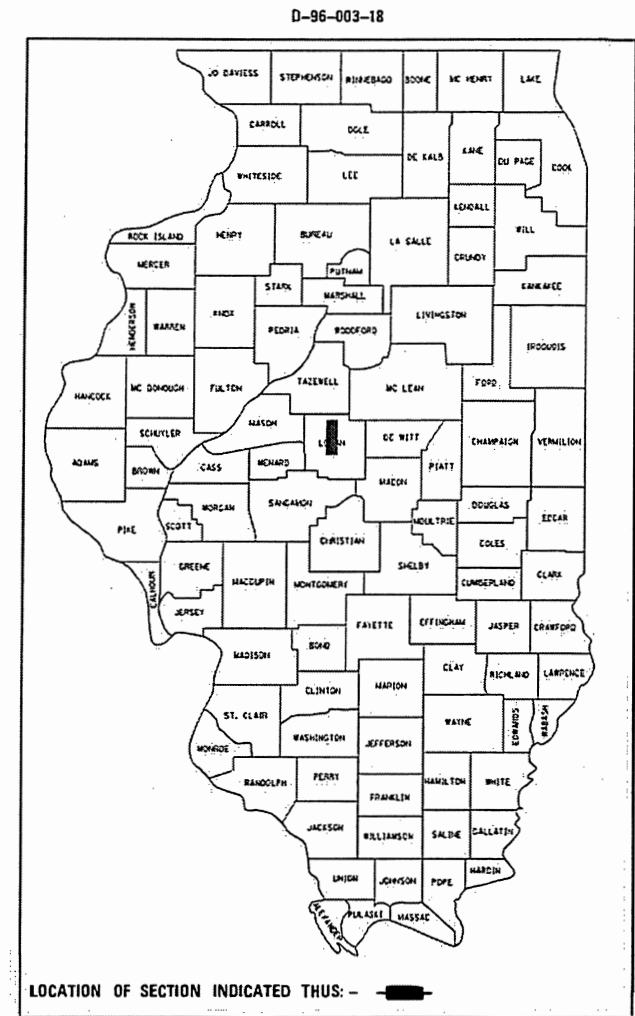
FOR INDEX OF SHEETS, SEE SHEET NO. 2

PROPOSED IMPROVEMENTS

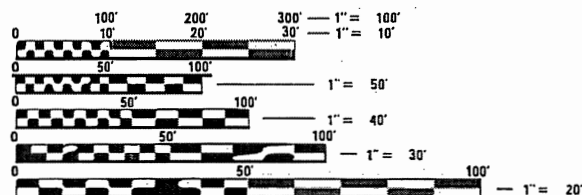
FAS 1774 (OLD IL 121)
(111, 113) Q
BITUMINOUS SURFACE TREATMENT

LOGAN CO

C-96-009-18



ADT = 1,450
SU = 70
MU = 40



FULL SIZE PLANS HAVE BEEN PREPARED USING STANDARD ENGINEERING SCALES. REDUCED SIZED PLANS WILL NOT CONFORM TO STANDARD SCALES. IN MAKING MEASUREMENTS ON REDUCED PLANS, THE ABOVE SCALES MAY BE USED.

J.U.L.I.E.
JOINT UTILITY LOCATION INFORMATION FOR EXCAVATION
1-800-892-0123
OR 811

BEGIN PROJECT
STA. 1479+53



RAILROAD OMISSION
STA. 1638+17.9
TO 1639+07.9

BRIDGE OMISSIONS
STA. 1677+63.9 TO 1674+18.9
STA. 1708+15.9 TO 1710+10.9
STA. 1715+07.9 TO 1717+04.9
STA. 1718+89.9 TO 1720+85.9
STA. 1722+04.9 TO 1724+91.9

END PROJECT
STA. 1736+67

PROJECT ENGINEER : MIKE IRWIN - (217)524-7765
PROJECT MANAGER : TIM SHARP - (217)524-9160

CONTRACT NO. 72K19

STATE OF ILLINOIS
DEPARTMENT OF TRANSPORTATION

SUBMITTED 26 October 2017

[Signature]
REGION FOUR ENGINEER

Nov 30 2017
[Signature]
ENGINEER OF DESIGN AND ENVIRONMENT

Nov 30 2017
[Signature]
DIRECTOR OF HIGHWAYS, CHIEF ENGINEER

PRINTED BY THE AUTHORITY
OF THE STATE OF ILLINOIS

INDEX OF SHEETS

SHEET NO.	DESCRIPTION
1.	COVER SHEET
2.	INDEX OF SHEETS, STANDARDS, GENERAL NOTES & SIGNATURE
3.	SUMMARY OF QUANTITIES
4.	PROJECT LOCATION MAP
5.	PROJECT TYPICAL SECTIONS

STANDARDS

STANDARD NO.	DESCRIPTION
442201-03	CLASS C AND D PATCHES
701001-02	OFF-ROAD OPERATIONS, 2L, 2W, MOR THAN 15' AWAY
701006-05	OFF-ROAD OPERATIONS, 2L, 2W, 15' TO 24" FROM PAVMENT EDGE
701201-04	LANE CLOSURE, 2L, 2W, DAY ONLY, FOR SPEEDS ≥ 45 MPH
701301-04	LANE CLOSURE, 2L, 2W, SHORT TERM OPERATIONS
701306-04	LANE CLOSURE, 2L, 2W, SLOW MOVING OPERATIONS DAY ONLY, FOR SPEEDS ≥ 45 MPH
701311-03	LANE CLOSURE, 2L, 2W, MOVING OPERATIONS, DAY ONLY
701901-07	TRAFFIC CONTROL DEVICES

NOTES:

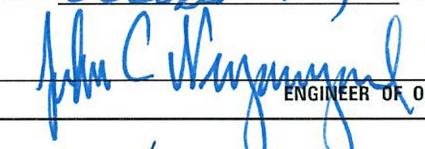
COVER AND SEAL COAT AGGREGATE SHALL BE CRUSHED LIMESTONE.

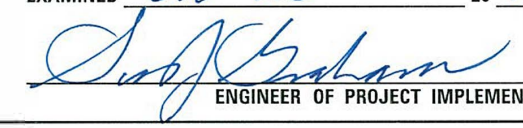
D-6 OPERATIONS WILL PLACE PERMANENT PAVEMENT MARKINGS.


CONTRACTOR SHALL PLACE AGGREGATE SHOULDERS, TYPE B, PRIOR TO BITUMINOUS SURFACE TREATMENT A-2.

UP TO 3 SWEEPINGS MAY BE REQUIRED BY A ROTARTY TYPE BROOM TO REMOVE EXCESS AGGREGATE.

**STATE OF ILLINOIS
DEPARTMENT OF TRANSPORTATION
DIVISION OF HIGHWAYS
DISTRICT 6**

EXAMINED October 18, 20 17

 ENGINEER OF OPERATIONS

EXAMINED Oct 23 20 17

 ENGINEER OF PROJECT IMPLEMENTATION

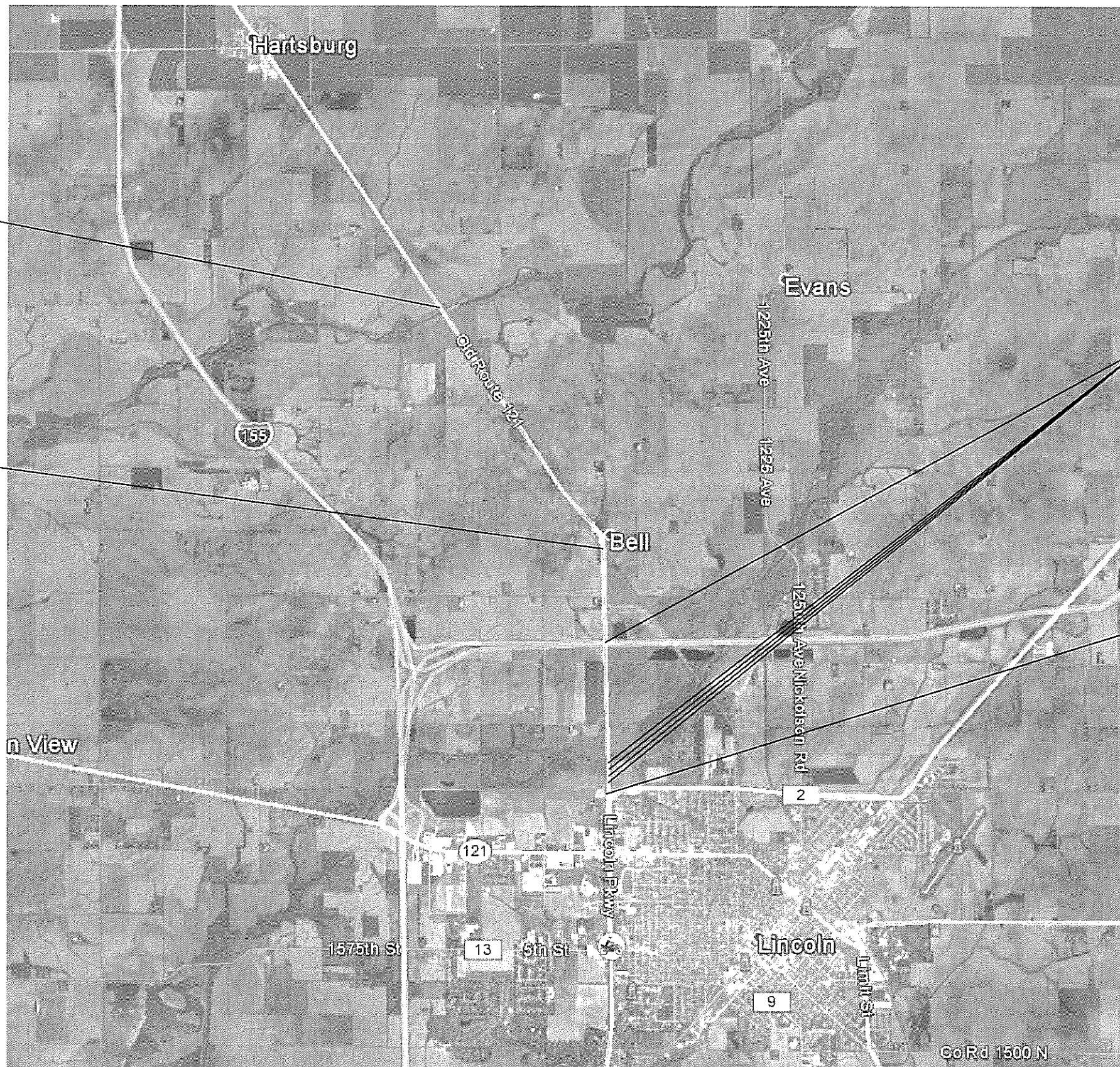
EXAMINED October 19 20 17

 ENGINEER OF PROGRAM DEVELOPMENT

				0-01624-6005
				100% STATE
				LOGAN
				OLD IL 121
				ROADWAY
				0005
				RURAL
CODE NO.	ITEM	UNIT	TOTAL QUANTITY	
40300400	BITUMINOUS MATERIALS (COVER AND SEAL COAT)	TON	221	221
40300500	COVER COAT AGGREGATE	TON	903	903
40300600	SEAL COAT AGGREGATE	TON	722	722
40600400	MIXTURE FOR CRACKS, JOINTS AND FLANGWAYS	TON	5	5
44201785	CLASS D PATCHES, TYPE I, 12 INCH	SQ YD	50	50
44201789	CLASS D PATCHES, TYPE II, 12 INCH	SQ YD	500	500
44201794	CLASS D PATCHES, TYPE III, 12 INCH	SQ YD	100	100
44201796	CLASS D PATCHES, TYPE IV, 12 INCH	SQ YD	100	100
48101200	AGGREGATE SHOULDERS, TYPE B	TON	1,828	1,828
67100100	MOBLIIZATION	L SUM	1	1.00
70100450	TRAFFIC CONTROL AND PROTECTION, STANDARD 701201	L SUM	1	1.00
70100460	TRAFFIC CONTROL AND PROTECTION, STANDARD 701306	L SUM	1	1.00
78300200	RAISED REFLECTIVE PAVEMENT MAKER REMOVAL	EACH	301	301.00
Z0048665	RAILROAD PROTECTIVE LIABILITY INSURANCE	L SUM	1	1

APPLICATION RATES		
	AGGREGATE	BITUMINOUS MATERIAL
COVER COAT	25 lb/sq yd	0.32 gal/sq yd
SEAL COAT	20 lb/sq yd	0.40 gal/sq yd

THE APPLICATION RATES SHOWN ABOVE MAY BE ADJUSTED BY THE ENGINEER BASED ON FIELD CONDITIONS

MIXTURE REQUIREMENTS	
THE FOLLOWING MIXTURE REQUIREMENTS ARE APPLICABLE FOR THIS PROJECT	
MIXTURE USE(S):	CLASS D PATCHES
AC/PG:	PG 64-22
DESIGN AIR VOIDS:	4.0% @ N50
MIXTURE COMPOSITION:	IL 19.0
FRICTION AGGREGATE:	N/A
QUALITY MANAGEMENT:	QC/QA
SUBLOT SIZE:	N/A



BEGIN PROJECT
STA. 1479+53

RAILROAD
OMISSION
STA. 1638+17.9
TO 1639+07.9

BRIDGE OMISSIONS
STA. 1677+63.9 TO 1674+18.9
STA. 1708+15.9 TO 1710+10.9
STA. 1715+07.9 TO 1717+04.9
STA. 1718+89.9 TO 1720+85.9
STA. 1722+04.9 TO 1724+91.9

END PROJECT
STA. 1736+67

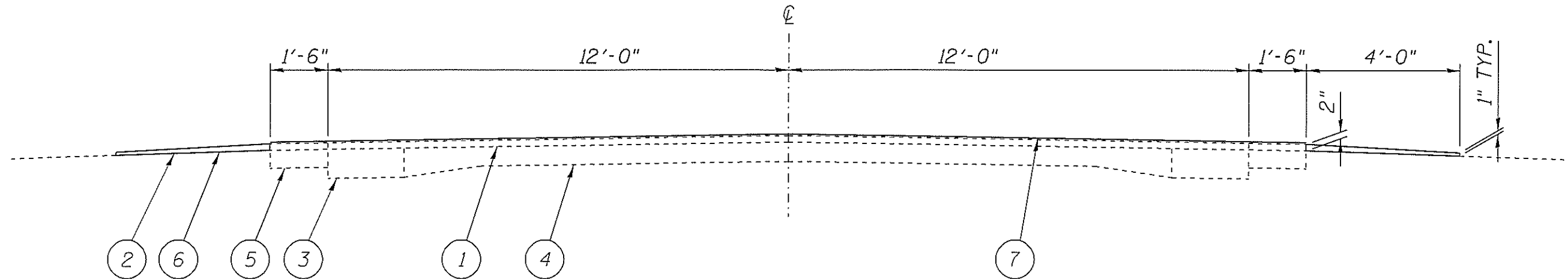
FILE NAME *	USER NAME = shertd	DESIGNED - _____	REVISED - _____
S:\CDNTRMAINT_CAD\72K19 - FA5 1774 - 101	D IL 121 - Logan Co - A-2\PLANS\72K19-shrt-4	DRAWN - _____	REVISED - _____
	PLOT SCALE = 40,0000' / in.	CHECKED - _____	REVISED - _____
Default	PLOT DATE = 10/18/2017	DATE - _____	REVISED - _____

**STATE OF ILLINOIS
DEPARTMENT OF TRANSPORTATION**

LOCATION MAP

SCALE: _____ SHEET _____ OF _____ SHEETS STA. _____ TO STA. _____

F.A.S. RTE.	SECTION	COUNTY	TOTAL SHEETS	SHEET NO.
1774	(111, 113) D	LOGAN	5	4
CONTRACT NO. 72K19				
[ILLINOIS] FED. AID PROJECT				



FAS 1774
 STA. 1479+53 TO 1736+67
 RAILROAD OMISSION
 STA. 1638+17.9 TO 1639+07.9
 BRIDGE OMISSION
 STA. 1677+63.9 TO 1674+18.9
 STA. 1708+15.9 TO 1710+10.9
 STA. 1715+07.9 TO 1717+04.9
 STA. 1718+89.9 TO 1720+85.9
 STA. 1722+04.9 TO 1724+91.9

L E G E N D

- 1- EXIST. H.M.A. SURFACE
- 2- EXIST. AGG. SHOULDER
- 3- EXIST. P.C.C. WIDENING
- 4- EXIST. 9-6-9 P.C.C. PAVEMENT
- 5- EXIST. H.M.A. SHOULDER
- 6- PROP. AGG. SHOULDER TYPE B
- 7- PROP. BITUMINOUS SURFACE TREATMENT A-2

FILE NAME =	USER NAME = shertsd	DESIGNED -	REVISED -	STATE OF ILLINOIS DEPARTMENT OF TRANSPORTATION	TYPICALS	F.A.S. RTE.	SECTION	COUNTY	TOTAL SHEETS	SHEET NO.
S:\CONTRMAINT_CAD\72K19 - FAS 1774 - 101	D IL 121 - Logan Co - A-2\PLANS\72K19-sht-5	DRAWN -	REVISED -			1774	(111, 113) 0	LDGAN	5	5
Default	PLOT SCALE = 3.0000' / in.	CHECKED -	REVISED -			CONTRACT NO. 72K19				
	PLOT DATE = 10/18/2017	DATE -	REVISED -			ILLINOIS FED. AID PROJECT				
				SCALE: SHEET OF SHEETS STA. TO STA.						