

# SUMMARY OF QUANTITIES

CODE NO.	ITEM	UNIT	TOTAL QUANTITY	CONSTR. CODE	
				80% FEDERAL 20% STATE	
				BRIDGE 0010 URBAN	
51204100	TEST PILE STEEL HP14X117	EACH	2	2	
51204650	PILE SHOES	EACH	30	30	
51500100	NAME PLATES	EACH	1	1	
52100520	ANCHOR BOLTS, 1"	EACH	48	48	
542D1060	PIPE CULVERTS, CLASS D, TYPE 2 15"	FOOT	102	102	
542D1063	PIPE CULVERTS, CLASS D, TYPE 2 18"	FOOT	92	92	
542D1069	PIPE CULVERTS, CLASS D, TYPE 2 24"	FOOT	85	85	
54213450	END SECTIONS 15"	EACH	2	2	
54213453	END SECTIONS 18"	EACH	2	2	
54213459	END SECTIONS 24"	EACH	2	2	
59100100	GEOCOMPOSITE WALL DRAIN	SQ YD	88	88	
60600095	CLASS SI CONCRETE (OUTLET)	CU YD	2	2	
60602500	CONCRETE GUTTER, TYPE A	FOOT	81	81	
* 63000001	STEEL PLATE BEAM GUARDRAIL, TYPE A, 6 FOOT POSTS	FOOT	575	575	

# SUMMARY OF QUANTITIES

CODE NO.	ITEM	UNIT	TOTAL QUANTITY	CONSTR. CODE	
				80% FEDERAL 20% STATE	
				BRIDGE 0010 URBAN	
* 63100045	TRAFFIC BARRIER TERMINAL, TYPE 2	EACH	2	2	
* 63100085	TRAFFIC BARRIER TERMINAL, TYPE 6	EACH	4	4	
* 63100167	TRAFFIC BARRIER TERMINAL, TYPE 1 (SPECIAL) TANGENT	EACH	2	2	
63200310	GUARDRAIL REMOVAL	FOOT	391	391	
66600105	FURNISHING AND ERECTING RIGHT OF WAY MARKERS	EACH	17	17	
67000400	ENGINEER'S FIELD OFFICE, TYPE A	CAL MO	8	8	
67100100	MOBILIZATION	L SUM	1	1	
70100450	TRAFFIC CONTROL AND PROTECTION, STANDARD 701201	L SUM	1	1	
70101830	TRAFFIC CONTROL AND PROTECTION, STANDARD BLR 21	L SUM	1	1	
70102637	TRAFFIC CONTROL AND PROTECTION, STANDARD 701701	EACH	1	1	
70107004	PAVEMENT MARKING BLACKOUT TAPE, 4"	FOOT	2417	2417	
70107008	PAVEMENT MARKING BLACKOUT TAPE, 8"	FOOT	655	655	
70107024	PAVEMENT MARKING BLACKOUT TAPE, 24"	FOOT	91	91	
70300150	SHORT TERM PAVEMENT MARKING REMOVAL	SQ FT	1524	1524	

\* SPECIALTY ITEM

REV. 1-4-2018

MODEL: Default  
FILE NAME: P:\MILLOR\REID\INTEG.ILLINOIS.GOV\FWIDOT\Documents\UDOT - Office\District 8\Projects\B76G56\CAD\Drawings\B76G56-sh-500.dgn

USER NAME = Burnsdeem	DESIGNED -	REVISED -
PLOT SCALE = 100.0000' / in.	DRAWN -	REVISED -
PLOT DATE = 10/20/2017	CHECKED -	REVISED -
	DATE -	REVISED -

STATE OF ILLINOIS  
DEPARTMENT OF TRANSPORTATION

SUMMARY OF QUANTITIES

SCALE: SHEET OF SHEETS STA. TO STA.

F.A.P. RTE. 789	SECTION 125B-2	COUNTY MADISON	TOTAL SHEETS 101	SHEET NO. 6
CONTRACT NO. 76G56				
ILLINOIS FED. AID PROJECT				

# SUMMARY OF QUANTITIES

CONSTR. CODE  
80% FEDERAL  
20% STATE  
BRIDGE  
0010  
URBAN

CODE NO.	ITEM	UNIT	TOTAL QUANTITY	BRIDGE 0010 URBAN
* 87800200	CONCRETE FOUNDATION, TYPE D	FOOT	3	3
* 87900200	DRILL EXISTING HANDHOLE	EACH	6	6
* 88500100	INDUCTIVE LOOP DETECTOR	EACH	18	18
* 88600100	DETECTOR LOOP, TYPE I	FOOT	2852	2852
* 89000100	TEMPORARY TRAFFIC SIGNAL INSTALLATION	EACH	1	1
* 89501510	RELOCATE EXISTING FLASHING BEACON	EACH	1	1
* 89502300	REMOVE ELECTRIC CABLE FROM CONDUIT	FOOT	1080	1080
* X0327009	REMOVE SIGN (SPECIAL)	EACH	1	1
X0327301	RELOCATE EXISTING MAILBOX	EACH	2	2
* X2600012	REMOVE AND RELOCATE SIGN PANEL AND POLE ASSEMBLY	EACH	1	1
X5860110	GRANULAR BACKFILL FOR STRUCTURES	CU YD	159	159
* X6330725	STEEL PLATE BEAM GUARDRAIL (SHORT RADIUS)	FOOT	50	50
X7015005	CHANGEABLE MESSAGE SIGN	CAL DAY	615	615
X7030005	TEMPORARY PAVEMENT MARKING REMOVAL	SQ FT	1424	1424
* X8100863	INTERCEPT EXISTING CONDUIT	EACH	1	1

\* SPECIALTY ITEM

# SUMMARY OF QUANTITIES

CONSTR. CODE  
80% FEDERAL  
20% STATE  
BRIDGE  
0010  
URBAN

CODE NO.	ITEM	UNIT	TOTAL QUANTITY	BRIDGE 0010 URBAN
* X8950810	REMOVE AND RE-ERECT FLASHING BEACON	EACH	4	4
Z0013798	CONSTRUCTION LAYOUT	L SUM	1	1
Z0016702	DETOUR SIGNING	L SUM	1	1
Z0046304	PIPE UNDERDRAINS FOR STRUCTURES 4"	FOOT	158	158

MODEL: Default; FILE NAME: P:\VOLUME4\INTEG\Illinois.gov\FW\DOT\Documents\DOT Offices\District 8\Projects\87656\CADD\87656-Sub\87656-Sub-500.dgn



4

REV. 1-4-2018

USER NAME = Burnsideem	DESIGNED -	REVISED -
PLOT SCALE = 100.0000' / in.	DRAWN -	REVISED -
PLOT DATE = 10/20/2017	CHECKED -	REVISED -
	DATE -	REVISED -

STATE OF ILLINOIS  
DEPARTMENT OF TRANSPORTATION

SCALE:		SHEET	OF	SHEETS	STA.	TO STA.
--------	--	-------	----	--------	------	---------

F.A.P. RTE. 789	SECTION 125B-2	COUNTY MADISON	TOTAL SHEETS 101	SHEET NO. 8
ILLINOIS FED. AID PROJECT				

GUARDRAIL SCHEDULE

LOCATION	GUARDRAIL REMOVAL	STEEL PLATE BEAM GUARDRAIL TYPE A, 6' POST	TRAFFIC BARRIER TERMINAL, TYPE 1 (SPECIAL) TANGENT	TRAFFIC BARRIER TERMINAL, TYPE 2	TRAFFIC BARRIER TERMINAL, TYPE 6	STEEL PLATE BEAM GUARDRAIL (SHORT RADIUS)	GUARDRAIL REFLECTORS, TYPE A, CRYSTAL	TERMINAL MARKERS DIRECT APPLIED
	FOOT	FOOT	EACH	EACH	EACH	FOOT	EACH	EACH
SN 060-0349	NW CORNER	52	112.50		1	20.00	4	
	SW CORNER	103.5	212.50	1			5	1
	NE CORNER	149.25	162.50		1	30.00	5	
	SE CORNER	86.25	87.50	1			3	1
TOTAL:		391	575	2	2	4	50	17
								2

RIGHT-OF-WAY MARKERS

LOCATION			FURNISHING AND ERECTING RIGHT-OF-WAY MARKERS (EACH)
STA	OFFSET	RT/LT	
IL 143			
231+50	51.02	RT	1
232+50	75.94	RT	1
233+72.45	49.09	LT	1
233+72.77	154.09	LT	1
236+06.14	234.20	LT	1
237+28.72	75.74	RT	1
237+29.67	199.25	LT	1
237+35.07	178.32	LT	1
237+78.98	124.28	LT	1
238+95.69	100.66	RT	1
240+00	100.61	RT	1
240+99.94	124.43	LT	1
241+00	90.57	RT	1
243+00	90.47	RT	1
243+50	99.55	LT	1
244+50	49.60	LT	1
245+00	50.38	RT	1
TOTAL			17

SIGN REMOVAL AND RELOCATE

LOCATION		WOOD POST	REMOVE SIGN PANEL ASSEMBLY - TYPE A	RELOCATE SIGN PANEL ASSEMBLY - TYPE A	REMOVE SIGN (SPECIAL)
STA	RT/LT	(FOOT)	(EACH)	(EACH)	(EACH)
IL 143					
235+56	LT		1		
236+17	RT	14	1	1	
235+45	LT				1
239+31	LT	13	1	1	
240+04	LT	13	1	1	
240+13	RT	13	1	1	
243+08	RT	12.5	1	1	
SERVICE ROAD					
10+44	LT	15		1	
TOTAL		80.50	6	6	1

RAISED REFLECTIVE PAVEMENT MARKERS

LOCATION			ONE-WAY AMBER	TWO-WAY AMBER
STA	TO	STA	(EACH)	(EACH)
IL 143				
230+75	TO	230+79		2
230+79	TO	234+75	18	
234+75	TO	236+36		6
238+86	TO	243+07	12	6
243+07	TO	245+80		8
SUBTOTAL:			30	22
TOTAL:				52

RELOCATE EXISTING MAILBOX

LOCATION			RELOCATE EXISTING MAILBOX
STA	NAME	RT/LT	(EACH)
IL 143			
239+75	PE	RT	1.0
244+50	PE	RT	1.0
TOTAL:			2

BARRIER WALL MARKERS

LOCATION				TYPE C
STA	TO	STA		(EACH)
IL 143				
236+21	TO	239+01		8
TOTAL:				8

REVISED SHEET 1-4-2018

MODEL: Default  
FILE NAME: D:\IL04E01\INTEG\Illinois\pov\WID\DOT\Documents\DOT Offices\District 6\Projects\0976656\CADD\A\A\A\04\Sheets\0876656-sh-schedule.dgn

USER NAME = Burnsdeem	DESIGNED -	REVISED -
	DRAWN -	REVISED -
PLOT SCALE = 100.0000' / in.	CHECKED -	REVISED -
PLOT DATE = 3/4/2018	DATE -	REVISED -

STATE OF ILLINOIS  
DEPARTMENT OF TRANSPORTATION

SCHEDULE OF QUANTITIES

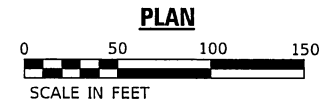
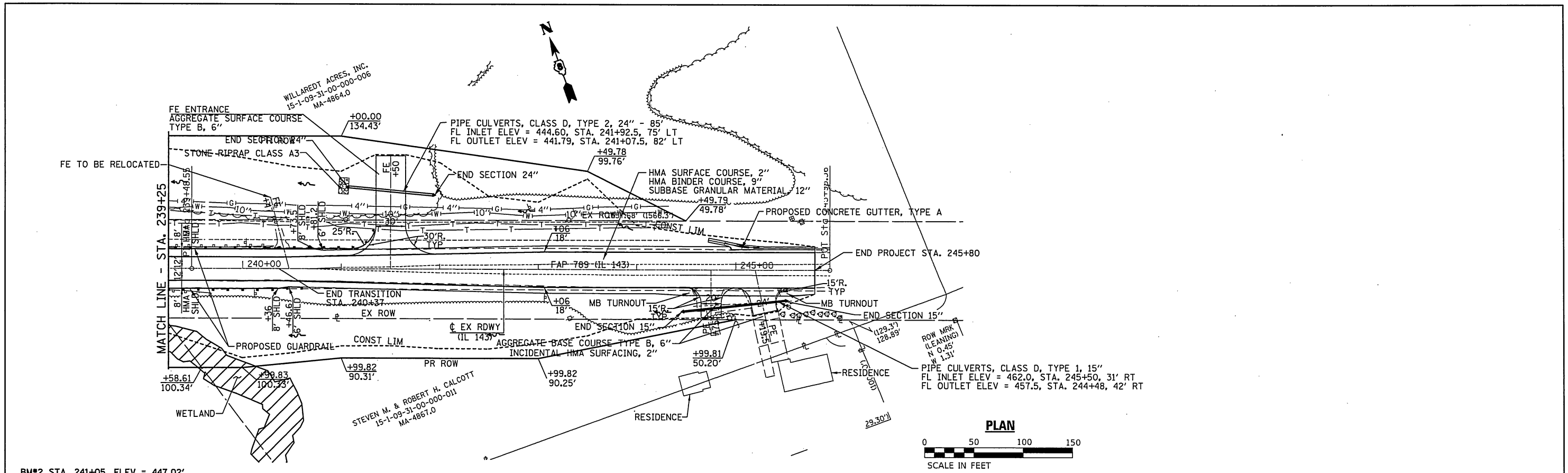
SCALE: SHEET OF SHEETS STA. TO STA.

F.A.P. RTE. 789	SECTION 125B-2	COUNTY MADISON	TOTAL SHEETS 101	SHEET NO. 15
CONTRACT NO. 76G56				
ILLINOIS FED. AID PROJECT				

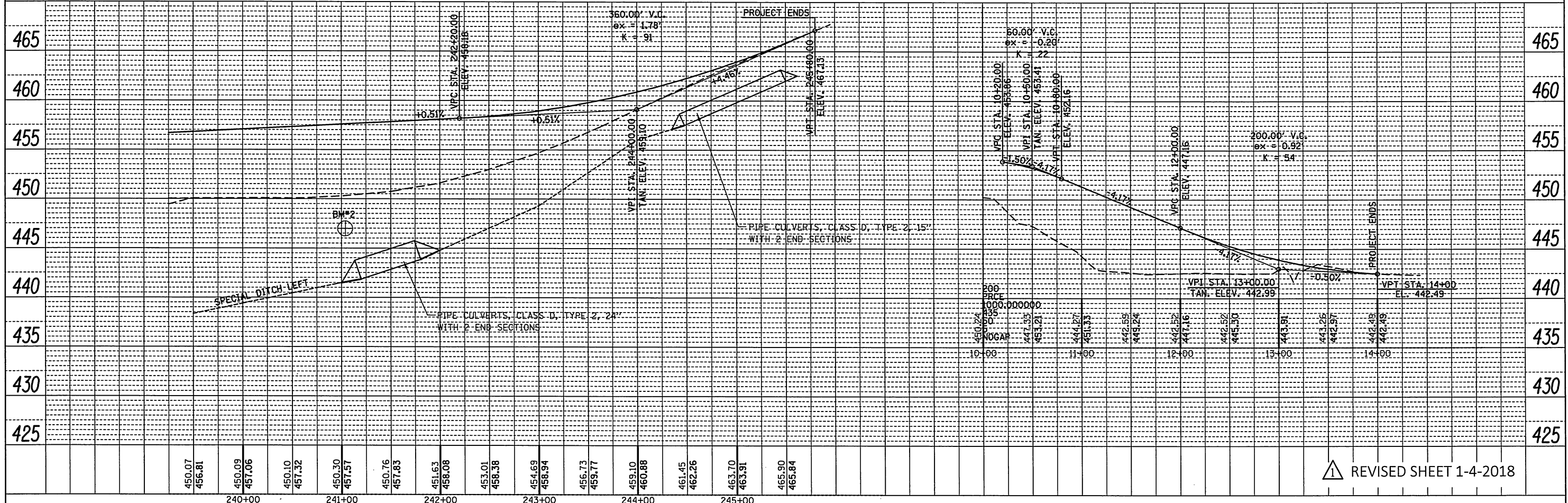


DATE	
BY	
PLAN	
SURVEYED	
PLOTTED	
NOTE BOOK	
NO.	
ADD. FILE NAME	

DATE	
BY	
PROFILE	
SURVEYED	
PLOTTED	
NOTE BOOK	
NO.	
ADD. FILE NAME	



BM#2 STA. 241+05, ELEV = 447.02'

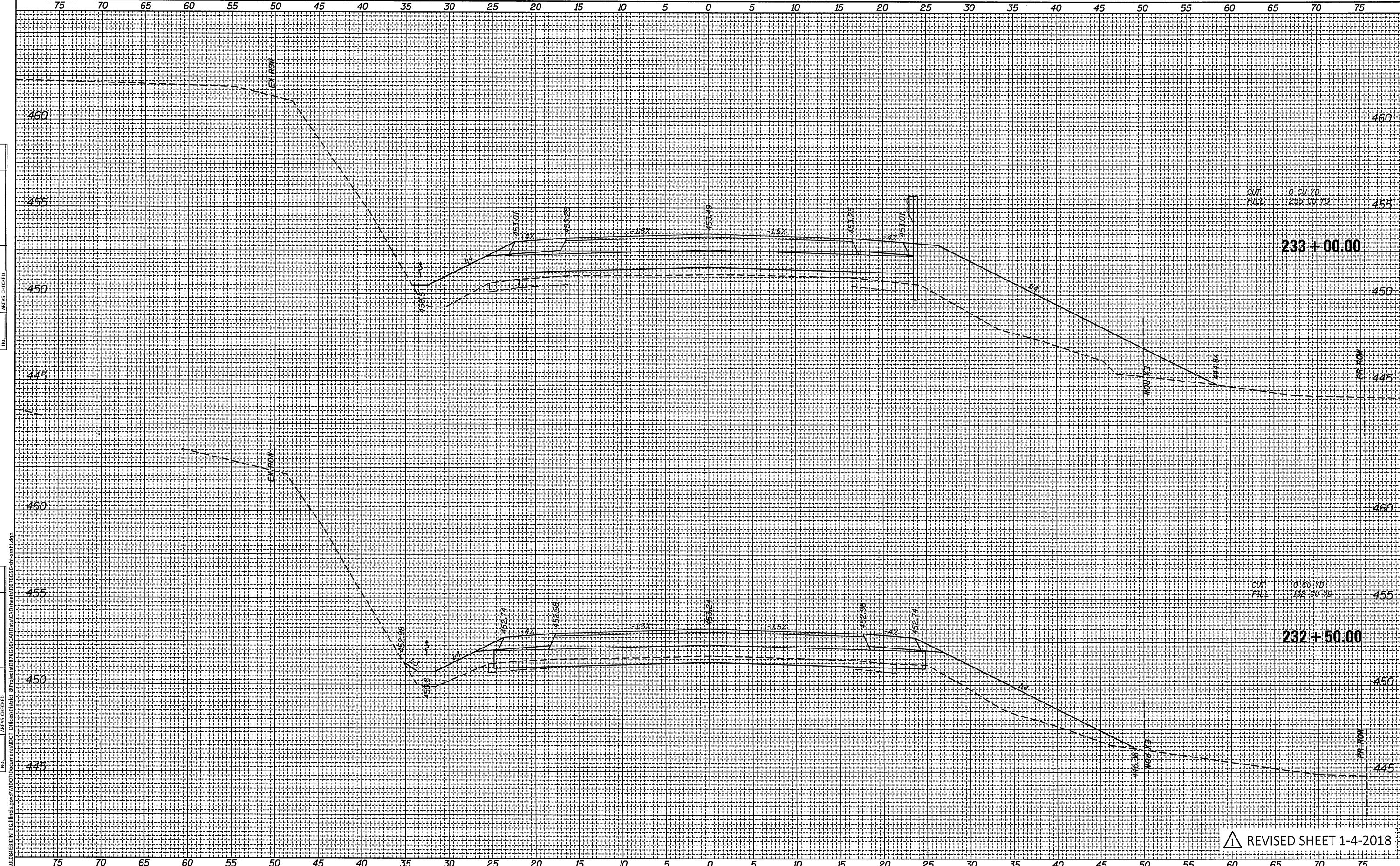


REVISD SHEET 1-4-2018

USER NAME = Burnsidesam	DESIGNED -	REVISED -	<b>STATE OF ILLINOIS DEPARTMENT OF TRANSPORTATION</b>	<b>PLAN &amp; PROFILE</b>		F.A.P. RTE. 789	SECTION 125B-2	COUNTY MADISON	TOTAL SHEETS 101	SHEET NO. 19	
PLOT SCALE = 100.0000' / 1in.	DRAWN -	REVISED -		SCALE: 1" = 50'	SHEET NO. 2 OF 2 SHEETS	STA. 239+25 TO STA. 245+80	CONTRACT NO. 76G56				
PLOT DATE = 1/4/2018	CHECKED -	REVISED -		ILLINOIS FED. AID PROJECT							
	DATE -	REVISED -									

FINAL SURVEY	SURVEYED	BY	DATE
NOTE BOOK	PLOTTED		
NO.	TEMPLATE		
	AREAS		
	CHECKED		

ORIGINAL SURVEY	SURVEYED	BY	DATE
NOTE BOOK	PLOTTED		
NO.	TEMPLATE		
	AREAS		
	CHECKED		



MODEL: Default  
 FILE NAME: \\p1001\proj\11566\11566.dwg  
 USER: burnsideem  
 DATE: 1/4/2018  
 PLOT SCALE: 10.0000' / in.  
 PLOT DATE: 1/4/2018

REVISD SHEET 1-4-2018

USER NAME = burnsideem	DESIGNED -	REVISED -
DRAWN -	REVISED -	REVISED -
CHECKED -	REVISED -	REVISED -
DATE -	REVISED -	REVISED -

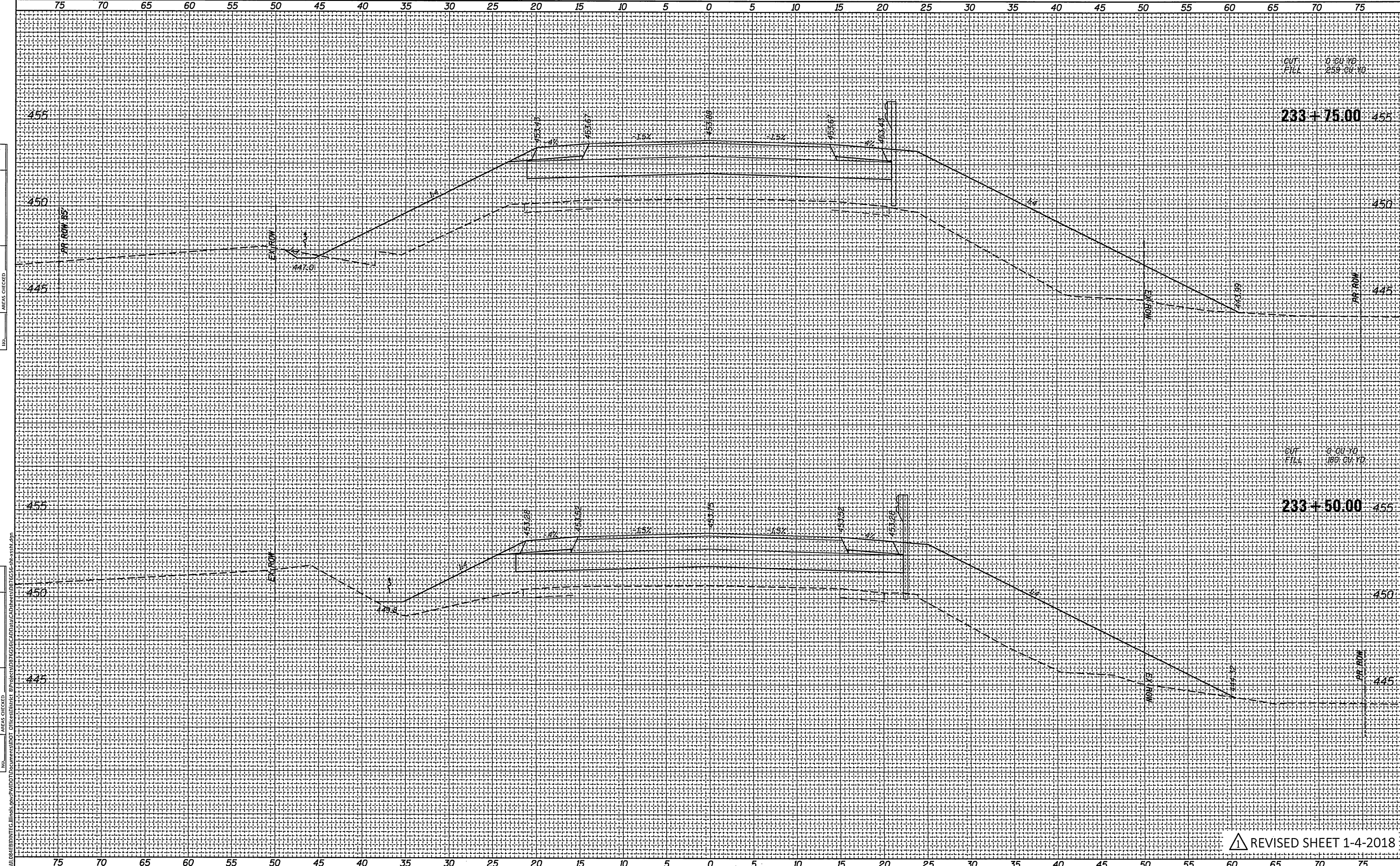
STATE OF ILLINOIS  
DEPARTMENT OF TRANSPORTATION

CROSS SECTIONS		F.A.P. RTE.	SECTION	COUNTY	TOTAL SHEETS	SHEET NO.
IL 143		789	125B-2	MADISON	101	77
SCALE:	SHEET OF SHEETS	STA. 232+50.00 TO STA. 233+00.00		CONTRACT NO. 76G56		

ILLINOIS FED. AID PROJECT

FINAL SURVEY	SURVEYED	BY	DATE
NOTE BOOK	PLOTTED		
AREA	TEMPLATE		
NO.	AREAS CHECKED		

ORIGINAL SURVEY	SURVEYED	BY	DATE
NOTE BOOK	PLOTTED		
AREA	TEMPLATE		
NO.	AREAS CHECKED		



CUT  
FILL  
0' 00" YD  
259' 00" YD

233+75.00

CUT  
FILL  
0' 00" YD  
180' 00" YD

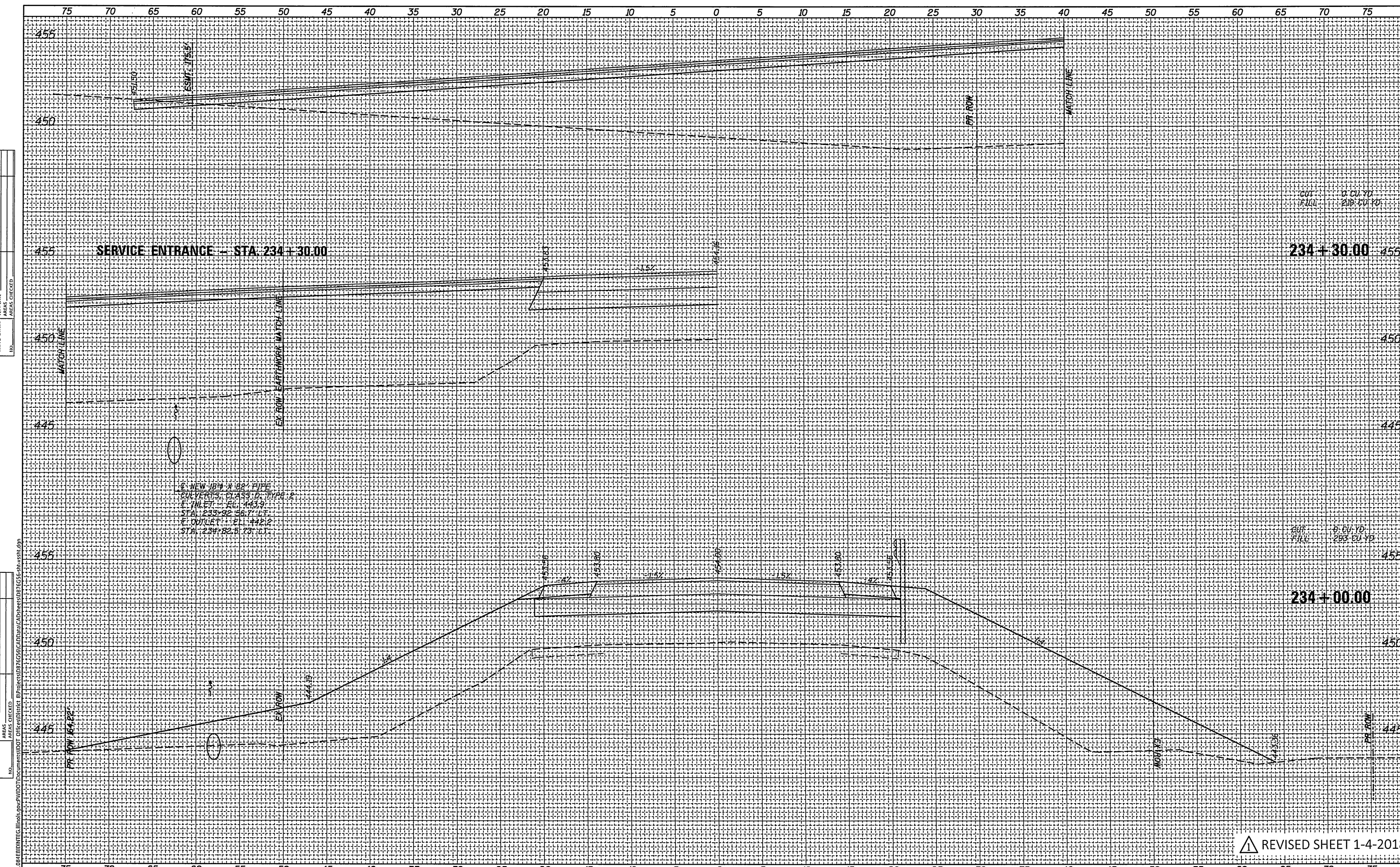
233+50.00

REVISD SHEET 1-4-2018

MODEL: Default FILE NAMES: I:\PROJECTS\11566\11566.DWG	USER NAME = Burnsiedem	DESIGNED -	REVISED -	<b>STATE OF ILLINOIS DEPARTMENT OF TRANSPORTATION</b>	<b>CROSS SECTIONS IL 143</b>			F.A.P. RTE. 789	SECTION 125B-2	COUNTY MADISON	TOTAL SHEETS 101	SHEET NO. 78
	PLOT SCALE = 10.0000' / in.	DRAWN -	REVISED -		SCALE:	SHEET	OF	SHEETS	STA. 233+50.00	TO STA. 233+75.00	CONTRACT NO. 76G56	
	PLOT DATE = 1/4/2018	CHECKED -	REVISED -								ILLINOIS FED. AID PROJECT	
		DATE -	REVISED -									

FINAL SURVEY	CONVERTED SURVEY
NOTE BOOK	TEMPLATED
NO.	AREAS CHECKED
BY:	DATE:

ORIGINAL SURVEY	CONVERTED SURVEY
NOTE BOOK	TEMPLATED
NO.	AREAS CHECKED
BY:	DATE:



6" NEW 18" X 18" PIPE  
 CULVERTS: CLASS D - TYPE 2  
 T INLET - EL. 443.9  
 STA. 233+92.56 7' LT.  
 T OUTLET - EL. 442.2  
 STA. 234+82.5 7' LT.

CUT: 0 CU. YD.  
 FILL: 218 CU. YD.

CUT: 0 CU. YD.  
 FILL: 283 CU. YD.

MODEL: Default FILE NAME: I:\WORK\2018\20180107\112550012\112550012\112550012\112550012\CAD\CADDATA\CADDATA\112550012\112550012.dgn	USER NAME = Burnsideem	DESIGNED -	REVISED -	<b>STATE OF ILLINOIS</b> <b>DEPARTMENT OF TRANSPORTATION</b>	<b>CROSS SECTIONS</b> <b>IL 143</b>		F.A.P. RTE. 789	SECTION 125B-2	COUNTY MADISON	TOTAL SHEETS 101	SHEET NO. 79	
	PLOT SCALE = 10.0000" / in.	DRAWN -	REVISED -		SCALE:	SHEET	OF SHEETS	STA. 234+00.00 TO STA. 234+30.00	CONTRACT NO. 76G56			
	PLOT DATE = 1/4/2018	CHECKED -	REVISED -		ILLINOIS FED. AID PROJECT							
		DATE -	REVISED -									

REVISOR'S MARK (triangle) REVISED SHEET 1-4-2018

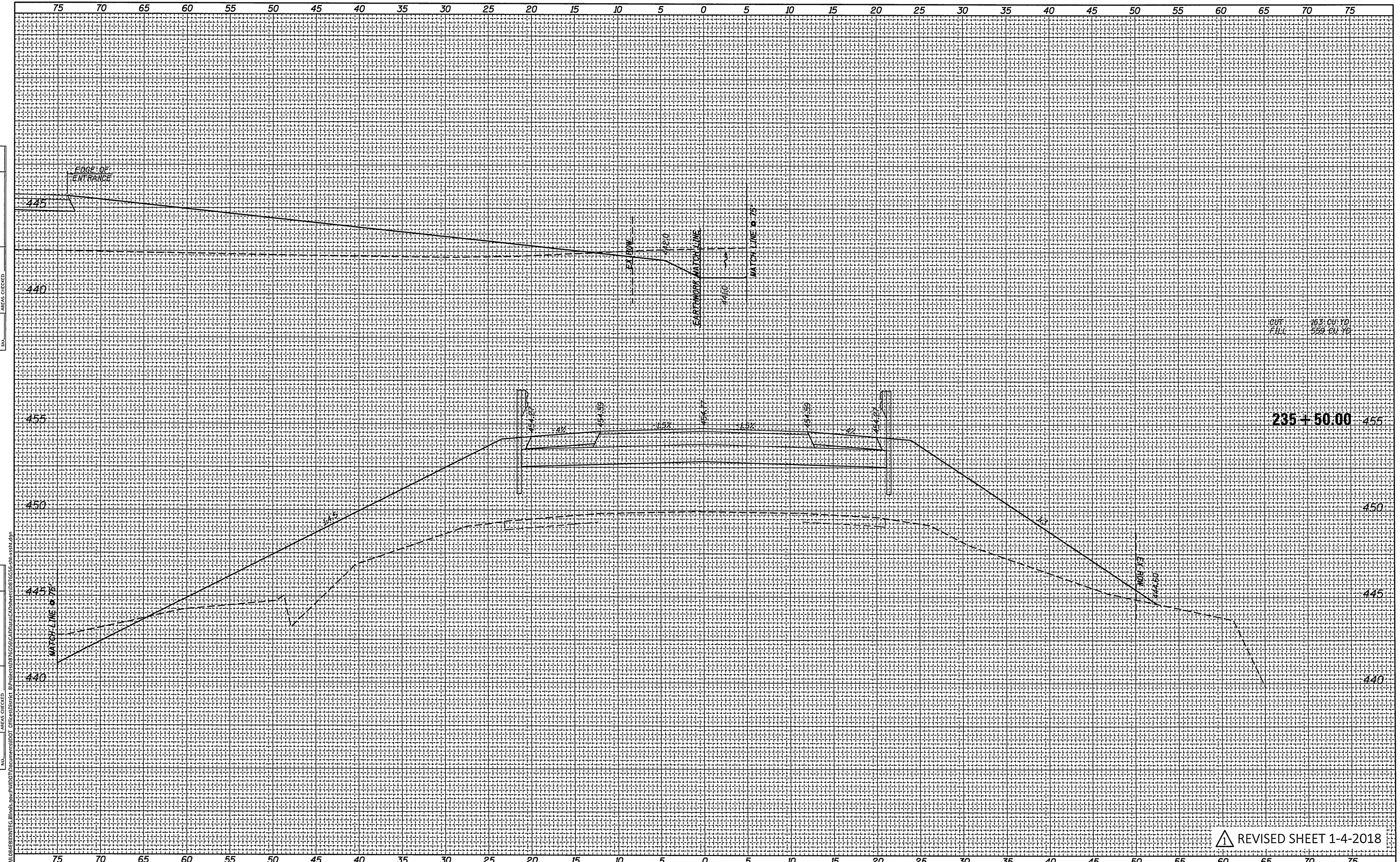






BY	DATE

BY	DATE



CUT FILL 163 CU. YD. 559 CU. YD.

235+50.00

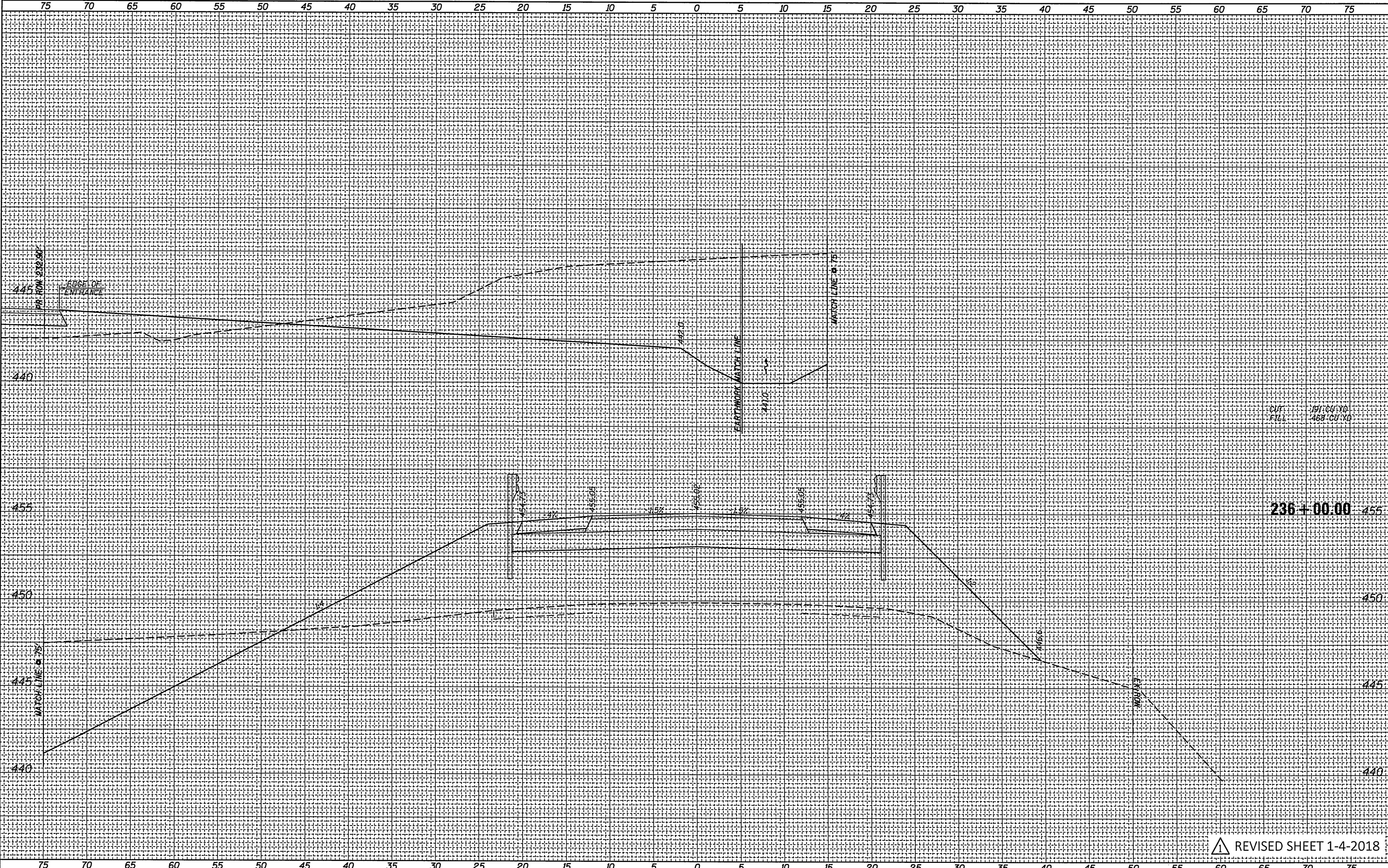
REVISD SHEET 1-4-2018

MODEL: D:\AutoCAD\Projects\2018\766\766.dwg	USER NAME = Burnsdeem		DESIGNED -	REVISED -	<b>STATE OF ILLINOIS</b> <b>DEPARTMENT OF TRANSPORTATION</b>	<b>CROSS SECTIONS</b> <b>IL 143</b>				F.A.P. RTE.	SECTION	COUNTY	TOTAL SHEETS	SHEET NO.	
FILE NAME: 766.dwg	PLOT SCALE = 10.0000' / In.		DRAWN -	REVISED -		SCALE:	SHEET	OF	SHEETS	STA. 235+50.00 TO STA. 235+50.00	789	125B-2	MADISON	101	82
	PLOT DATE = 1/4/2018		CHECKED -	REVISED -		ILLINOIS FED. AID PROJECT				CONTRACT NO. 76G56					
			DATE -	REVISED -											

FINAL SURVEY	DATE
SURVEYED	BY
PLOTTED	
TEMPLATE	
NOTE BOOK	
AREAS CHECKED	
NO.	

ORIGINAL SURVEY	DATE
SURVEYED	BY
PLOTTED	
TEMPLATE	
NOTE BOOK	
AREAS CHECKED	
NO.	

MODEL: D:\mft\...  
 FILE NAME: ...



REVISOR SHEET 1-4-2018

USER NAME = Burnsideem	DESIGNED -	REVISED -
PLLOT SCALE = 10.0000' / in.	DRAWN -	REVISED -
PLLOT DATE = 1/4/2018	CHECKED -	REVISED -
	DATE -	REVISED -

STATE OF ILLINOIS  
 DEPARTMENT OF TRANSPORTATION

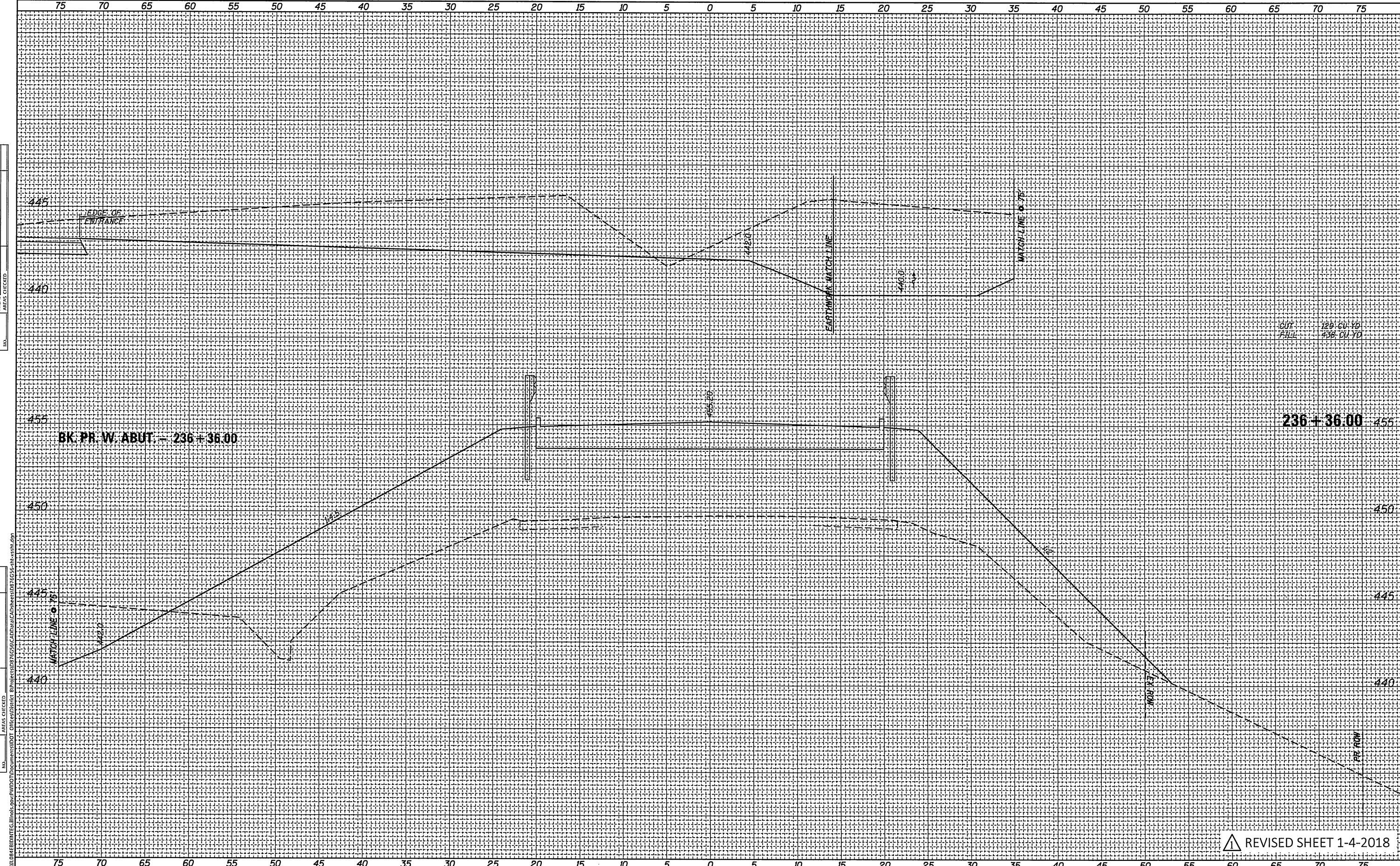
CROSS SECTIONS  
 IL 143

SCALE: SHEET OF SHEETS STA. 236+00.00 TO STA. 236+00.00

F.A.P. RTE.	SECTION	COUNTY	TOTAL SHEETS	SHEET NO.
789	125B-2	MADISON	101	83
				CONTRACT NO. 76G56
ILLINOIS FED. AID PROJECT				

FINAL SURVEY	BY	DATE
REVISIONS		
NO.		
DATE		
BY		
REASON		
APPROVED		
DATE		
BY		

ORIGINAL SURVEY	BY	DATE
REVISIONS		
NO.		
DATE		
BY		
REASON		
APPROVED		
DATE		
BY		



CUT - 129 CU YD  
 FILL - 138 CU YD

236+36.00

REVISOR SHEET 1-4-2018

MODEL: Default  
 FILE NAME: \\ILLINOIS\PROJECTS\766\766-1\DRAWINGS\766-1\766-1-118\766-1-118-1.dwg

USER NAME = Burnsdeem	DESIGNED -	REVISOR -
PLOT SCALE = 10.0000 ' / in.	DRAWN -	REVISOR -
PLOT DATE = 1/4/2018	CHECKED -	REVISOR -
	DATE -	REVISOR -

STATE OF ILLINOIS  
 DEPARTMENT OF TRANSPORTATION

CROSS SECTIONS  
 IL 143

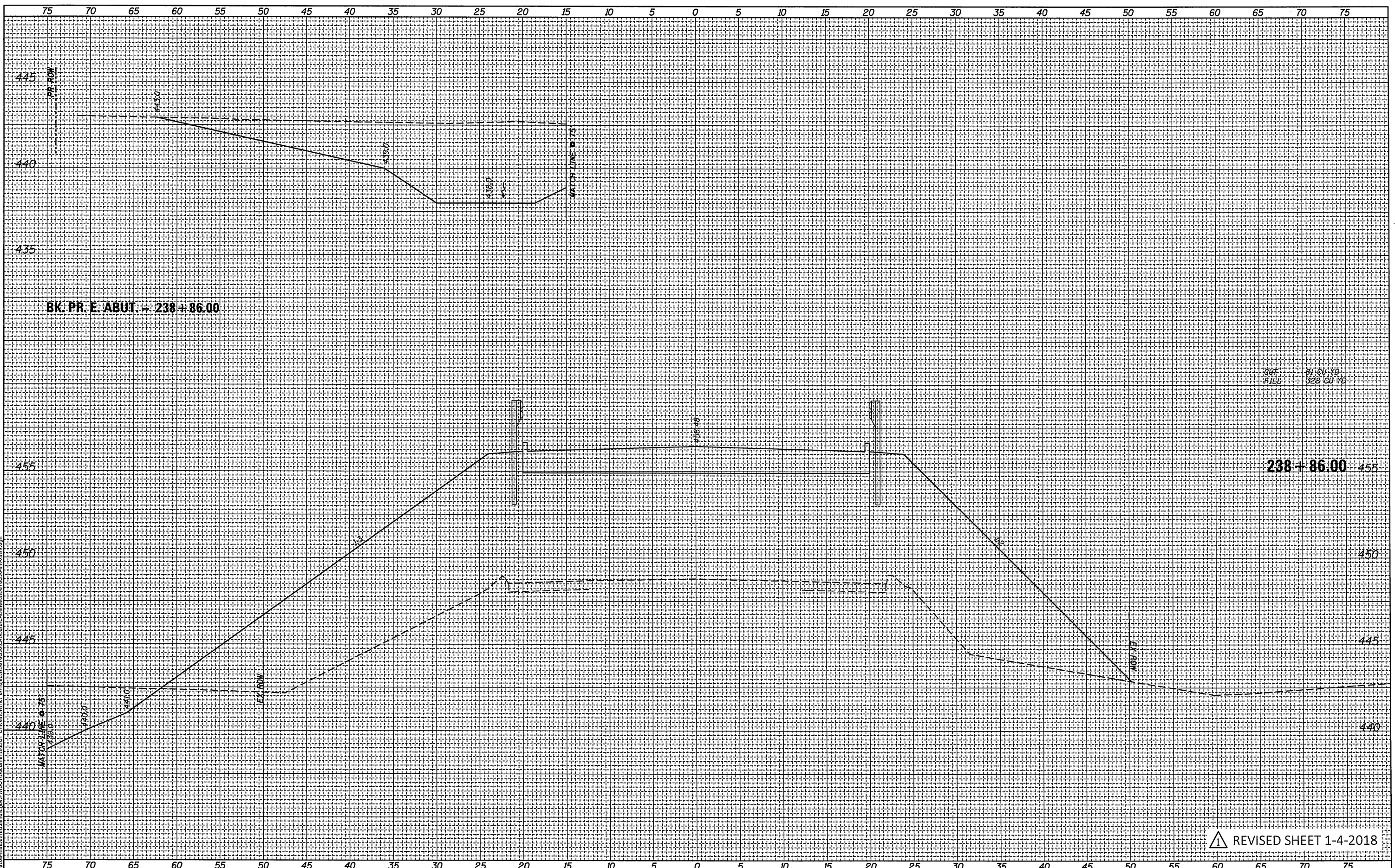
SCALE: SHEET OF SHEETS STA. 236+36.00 TO STA. 236+36.00

F.A.P. RTE.	SECTION	COUNTY	TOTAL SHEETS	SHEET NO.
789	125B-2	MADISON	101	84
CONTRACT NO. 76G56			ILLINOIS FED. AID PROJECT	

DATE	
BY	
FINAL SURVEY	
SURVEYED	
PLOTTED	
NOTED	
AREAS	
AREAS CHECKED	
NO.	

DATE	
BY	
ORIGINAL SURVEY	
SURVEYED	
PLOTTED	
NOTED	
AREAS	
AREAS CHECKED	
NO.	

MODEL: D:\dwg\11111111.dwg  
FILE NAME: p:\w\10848\BID\TEC\Illinois\pwr\DOT\Documents\DOT Office\District @Project\287656\CADD\Drawings\11111111.dwg



REVISI... SHEET 1-4-2018

USER NAME = BurnsSideem	DESIGNED -	REVISED -
PLOT SCALE = 10,0000' / in.	DRAWN -	REVISED -
PLOT DATE = 1/4/2018	CHECKED -	REVISED -
	DATE -	REVISED -

STATE OF ILLINOIS  
DEPARTMENT OF TRANSPORTATION

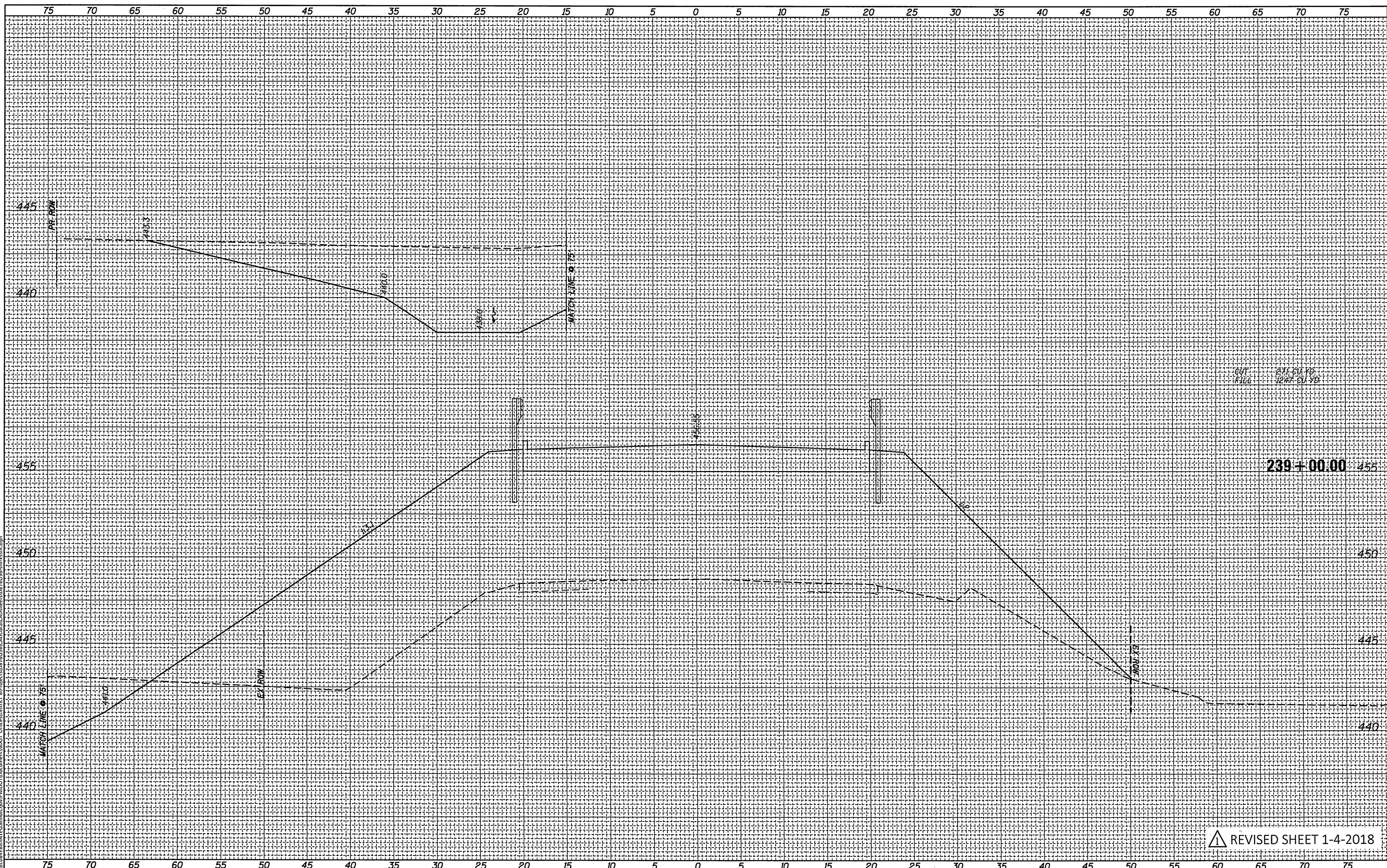
CROSS SECTIONS IL 143	
SCALE:	SHEET OF SHEETS STA. 238+86.00 TO STA. 238+86.00

F.A.P. RTE. 789	SECTION 125B-2	COUNTY MADISON	TOTAL SHEETS 101	SHEET NO. 85
CONTRACT NO. 76G56				
ILLINOIS FED. AID PROJECT				

BY	DATE
SURVEYED	
PLOTTED	
REPLACED	
NOTE BOOK	
AREAS CHECKED	
NO.	

BY	DATE
SURVEYED	
PLOTTED	
REPLACED	
NOTE BOOK	
AREAS CHECKED	
NO.	

MODEL: D:\dwf\it  
 FILE NAME: p:\w\1084EB\INTEG\_illinois\pwr\DOT\Documents\DOT Office\District 8\Projects\125B-2\CADD\DATA\CAD\Sheet10776G56-arx-ssn.dgn



REVISD SHEET 1-4-2018

USER NAME = Burnsdeem	DESIGNED -	REVISED -
PLOT SCALE = 10,0000' / in.	DRAWN -	REVISED -
PLOT DATE = 1/4/2018	CHECKED -	REVISED -
	DATE -	REVISED -

STATE OF ILLINOIS  
 DEPARTMENT OF TRANSPORTATION

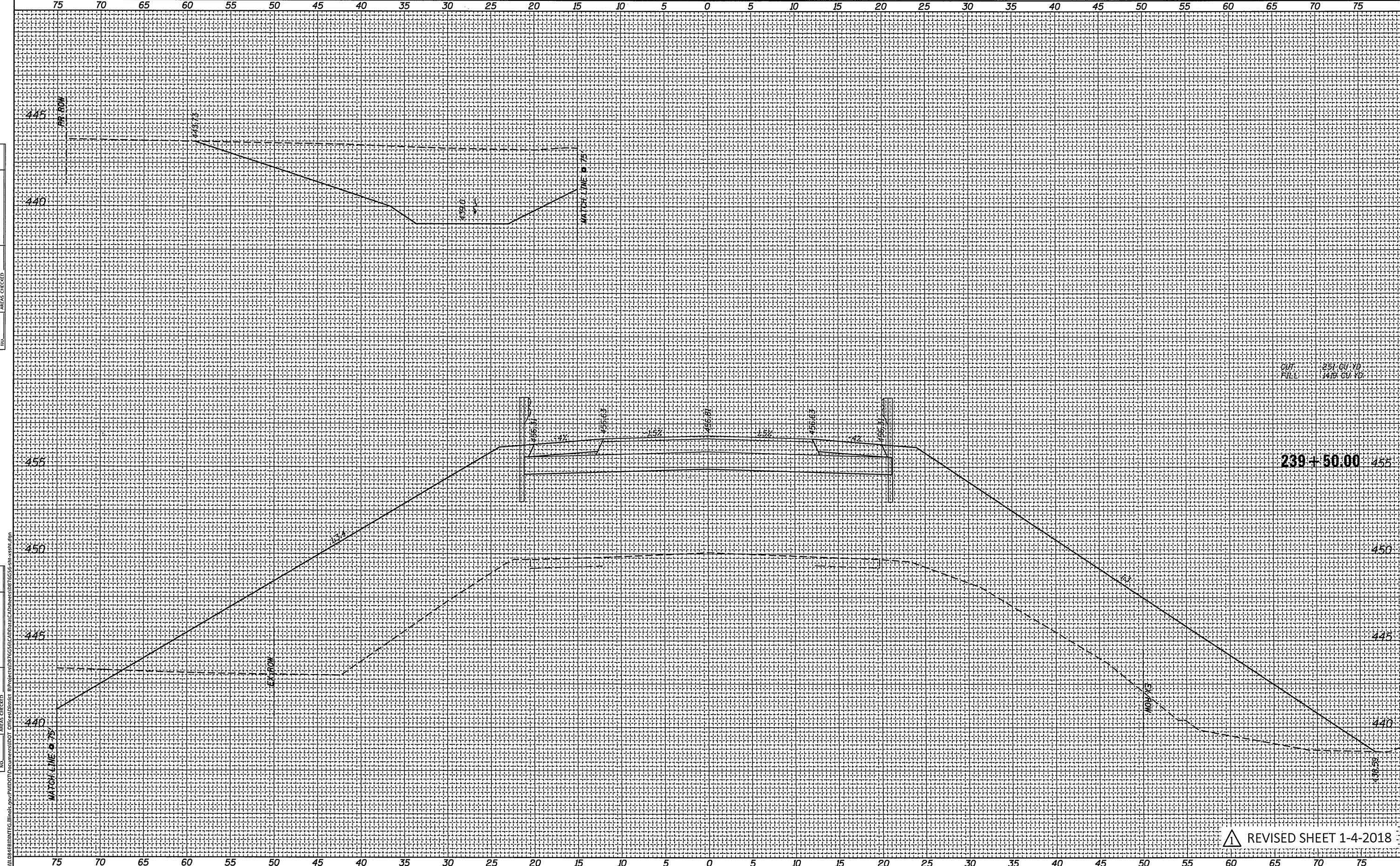
CROSS SECTIONS  
 IL 143

SCALE: SHEET OF SHEETS STA. 239+00.00 TO STA. 239+00.00

F.A.P. RTE. 789	SECTION 125B-2	COUNTY MADISON	TOTAL SHEETS 101	SHEET NO. 86
CONTRACT NO. 76G56				
ILLINOIS FED. AID PROJECT				

FINAL SURVEY	SURVEYED	BY	DATE
NOTE BOOK	PLOTTED		
NO.	TEMPLATE		
	AREAS CHECKED		

ORIGINAL SURVEY	SURVEYED	BY	DATE
NOTE BOOK	PLOTTED		
NO.	TEMPLATE		
	AREAS CHECKED		



MODEL: D:\dwg\1104\FEDINTEG.illinois.pdw\DOT\Documents\DOT\_Offices\District 09\Projects\0976G56\CADD\Drawn\CAD\Sheet\0976G56-Sub-ssht.dwg  
 FILE NAME: p:\work\FEDINTEG.illinois.pdw\DOT\Documents\DOT\_Offices\District 09\Projects\0976G56\CADD\Drawn\CAD\Sheet\0976G56-Sub-ssht.dwg

USER NAME = Burrsdeem	DESIGNED -	REVISED -
PLOT SCALE = 10.0000' / in.	DRAWN -	REVISED -
PLOT DATE = 1/4/2018	CHECKED -	REVISED -
	DATE -	REVISED -

STATE OF ILLINOIS  
DEPARTMENT OF TRANSPORTATION

CROSS SECTIONS			
IL 143			
SCALE:	SHEET	OF	SHEETS
			STA. 239+50.00 TO STA. 239+50.00

F.A.P. RTE. 789	SECTION 125B-2	COUNTY MADISON	TOTAL SHEETS 101	SHEET NO. 87
CONTRACT NO. 76G56				
ILLINOIS FED. AID PROJECT				

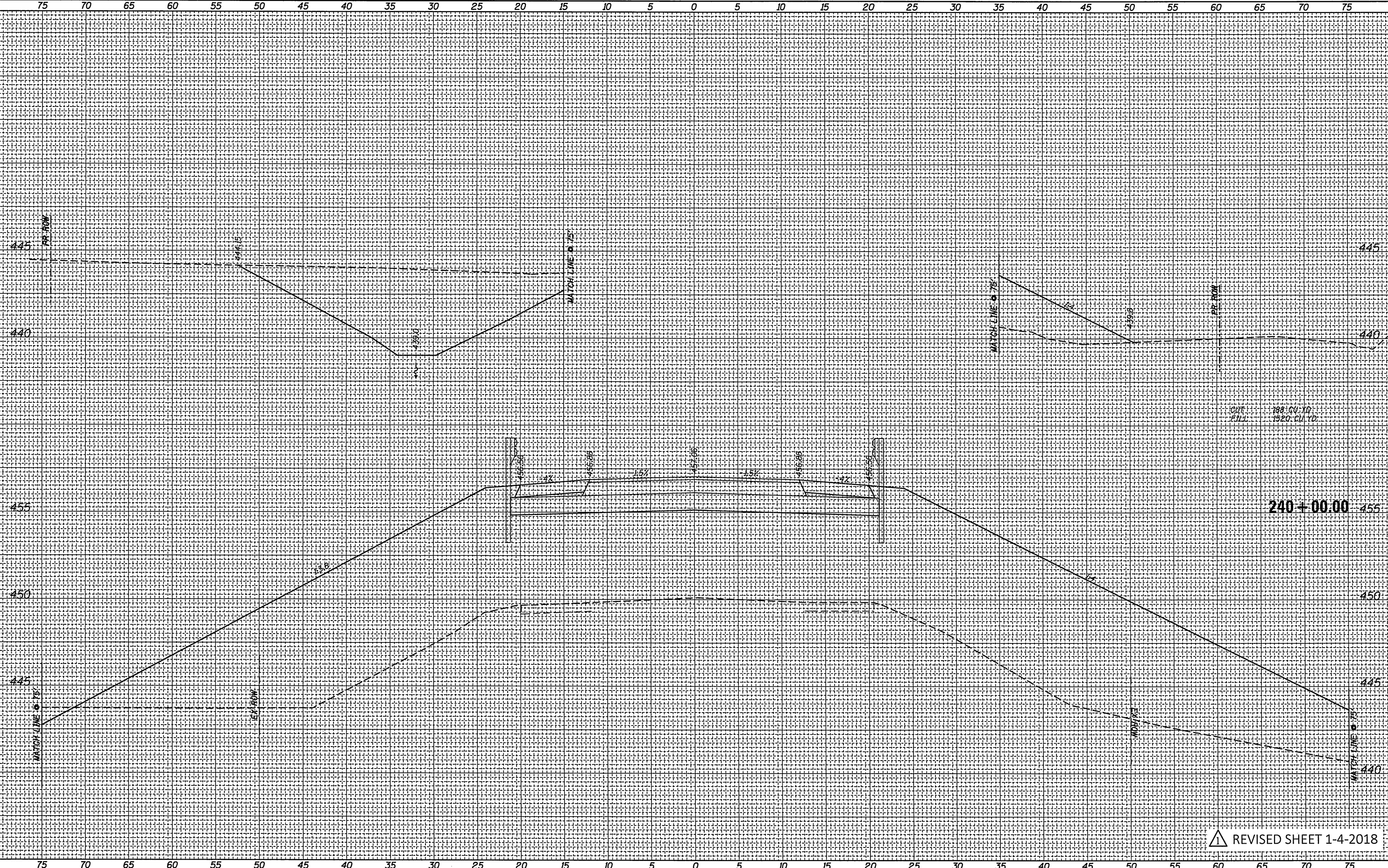
REVISION 1-4-2018



FINAL SURVEY	SURVEYED	BY	DATE
NOTE BOOK NO.	PLOTTED		
	TEMPLATE		
	AREAS CHECKED		
	ADJUSTED		

ORIGINAL SURVEY	SURVEYED	BY	DATE
NOTE BOOK NO.	PLOTTED		
	TEMPLATE		
	AREAS CHECKED		
	ADJUSTED		

MODEL: D:\Draw...  
 FILE NAME: C:\Users\...  
 PROJECT: ...



USER NAME =	Burnsideem	DESIGNED -	REVISED -
		DRAWN -	REVISED -
PLOT SCALE =	10.0000' / in.	CHECKED -	REVISED -
PLOT DATE =	1/4/2018	DATE -	REVISED -

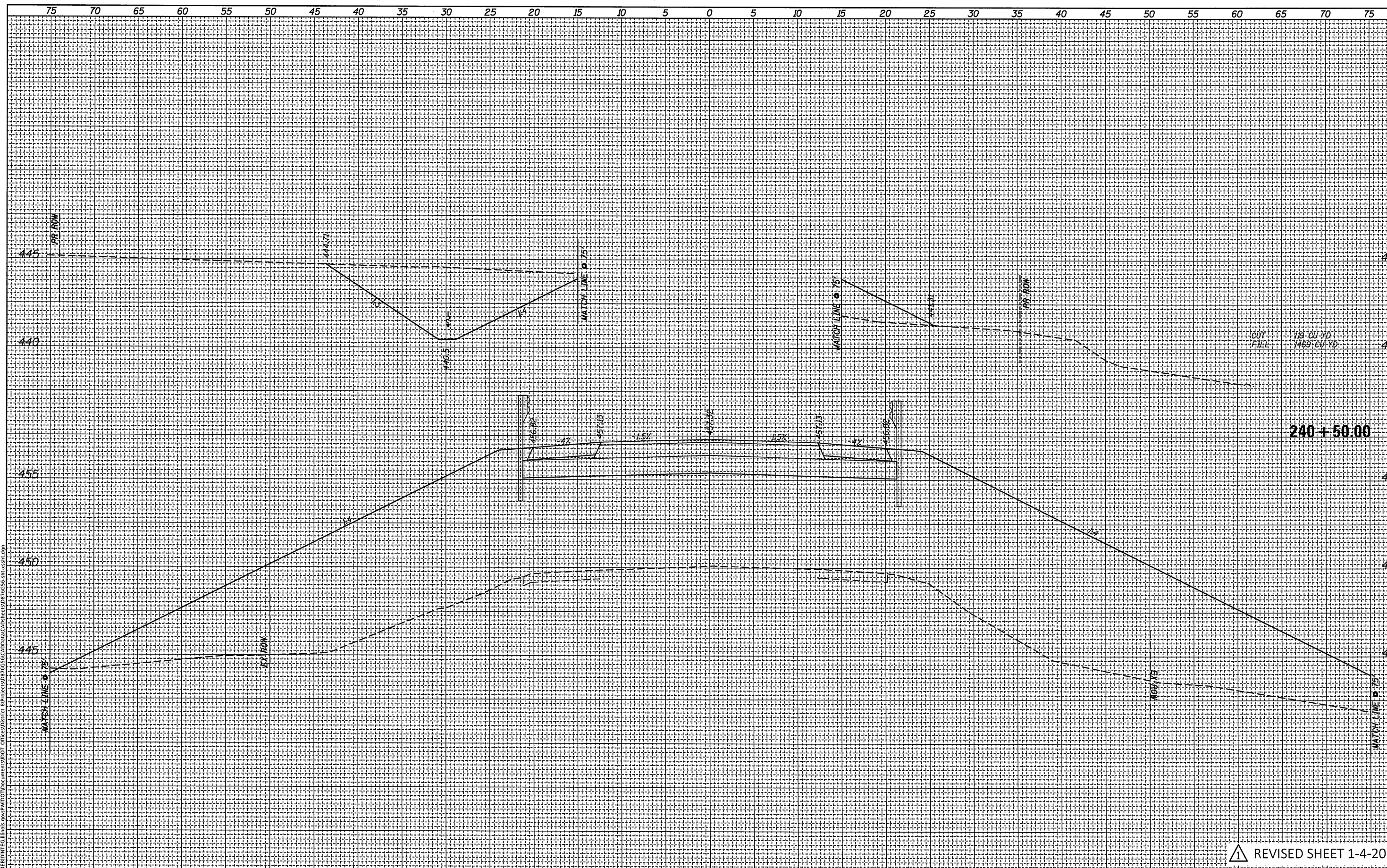
**STATE OF ILLINOIS  
DEPARTMENT OF TRANSPORTATION**

**CROSS SECTIONS  
IL 143**

SCALE: SHEET OF SHEETS STA. 240+00.00 TO STA. 240+00.00

F.A.P. RTE. 789	SECTION 125B-2	COUNTY MADISON	TOTAL SHEETS 101	SHEET NO. 88
CONTRACT NO. 76G56				
ILLINOIS FED. AID PROJECT				

REVISED SHEET 1-4-2018



FINAL SURVEY	SURVEYED	BY _____	DATE _____
NOTE BOOK	PLOTTED		
NO.	TEMPLATE		
	AREAS CHECKED		
	NO.		

ORIGINAL SURVEY	SURVEYED	BY _____	DATE _____
NOTE BOOK	PLOTTED		
NO.	TEMPLATE		
	AREAS CHECKED		
	NO.		

MODEL: d:\default  
FILE NAME: d:\projects\125B-2\125B-2\_076G56.dwg  
USER: burrisdeem  
DATE: 11/14/2018

STATE OF ILLINOIS  
DEPARTMENT OF TRANSPORTATION

CROSS SECTIONS  
IL 143

USER NAME	= burrisdeem
DESIGNED	-
DRAWN	-
CHECKED	-
DATE	-

REVISED	-
REVISED	-
REVISED	-
REVISED	-

SCALE:	SHEET	OF	SHEETS	STA. 240+50.00	TO STA. 240+50.00
--------	-------	----	--------	----------------	-------------------

F.A.P. RTE.	SECTION	COUNTY	TOTAL SHEETS	SHEET NO.
789	125B-2	MADISON	101	89
			CONTRACT NO. 76G56	
ILLINOIS FED. AID PROJECT				

REVISED SHEET 1-4-2018