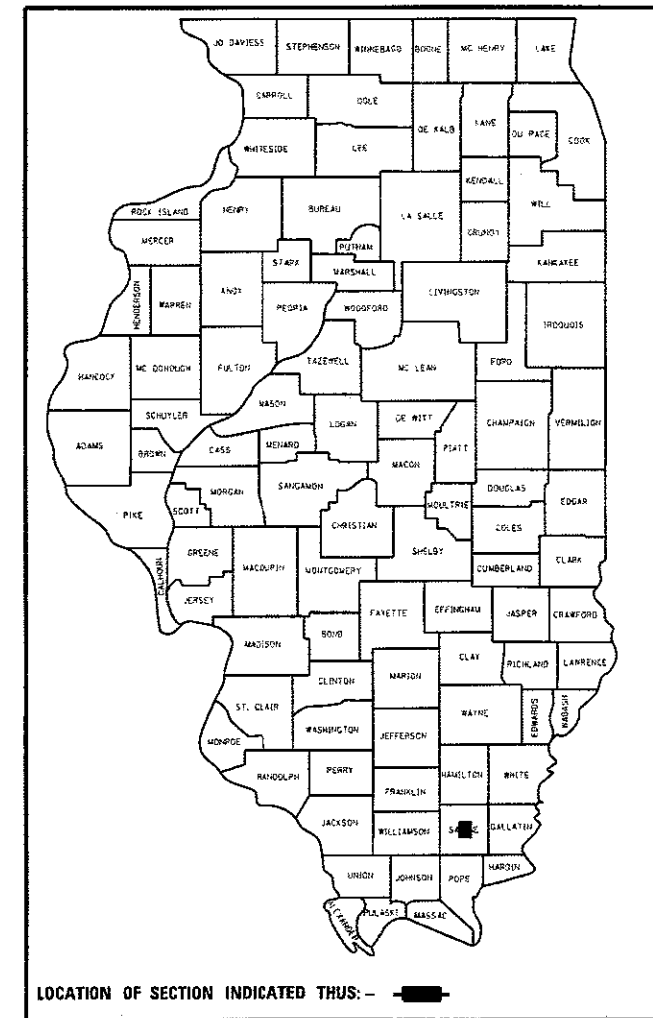


STATE OF ILLINOIS  
DEPARTMENT OF TRANSPORTATION

F.A. RTE.	SECTION	COUNTY	TOTAL SHEETS	SHEET NO.
•	(3-2,8X-1,4-2)TS-1	SALINE	21	1
		ILLINOIS	CONTRACT NO. 78597	

• FAP 331/FAS 899

D-99-051-17



# PROPOSED HIGHWAY PLANS

FAP ROUTE 331/FAS ROUTE 899 (IL 13/OLD IL 13)  
SECTION (3-2,8X-1,4-2)TS-1  
PROJECT HSIP-19UP(194)  
TRAFFIC SIGNALS  
SALINE COUNTY

C-99-051-17

FOR INDEX OF SHEETS, SEE SHEET NO. 3  
FOR SUMMARY OF QUANTITIES, SEE SHEET NO. 5-8

### TRAFFIC DATA

IL13 WEST: 2015 ADT = 8,000 WITH 10.9% TRUCKS  
IL13 EAST: 2015 ADT = 6,650 WITH 19.5% TRUCKS  
OLD IL13 SOUTH: 2015 ADT = 2,700  
OLD IL13 NORTH: 2015 ADT = 1,650

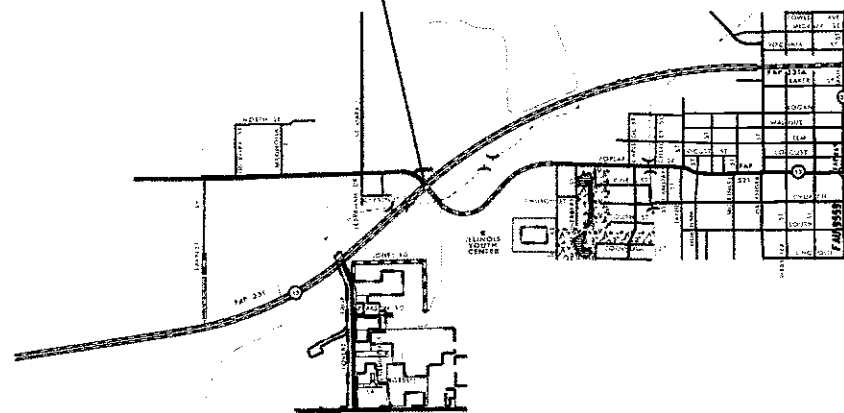
### TOWNSHIPS

HARRISBURG

IMPROVEMENT INTERSECTION  
IL 13 & OLD IL 13 (POPLAR ST)

R6E

T9S



COORDINATE SYSTEM : EPSG: 102671  
NAD 1983 STATE PLANE ILLINOIS EAST FIPS 1201 FEET

POSTED SPEED : 45 MPH

J.U.L.I.E.  
JOINT UTILITY LOCATION INFORMATION FOR EXCAVATION  
1-800-892-0123  
OR 811

PROJECT ENGINEER: SUSAN POE  
DESIGN ENGINEER: JAY KRANZ

CONTRACT NO. 78597

GROSS LENGTH = 168.0 FT. = 0.03 MILES  
NET LENGTH = 168.0 FT. = 0.03 MILES

STATE OF ILLINOIS  
DEPARTMENT OF TRANSPORTATION

SUBMITTED Oct 12 2017  
Jeffrey L. Keim  
 REGION FIVE ENGINEER

Nov 30 2017  
Mawson M. Adair, P.E.  
 ENGINEER OF DESIGN AND ENVIRONMENT

Nov 30 2017  
[Signature]  
 DIRECTOR OF PROGRAM DEVELOPMENT

PRINTED BY THE AUTHORITY  
OF THE STATE OF ILLINOIS

Prepared By: *[Signature]*  
 DISTRICT STUDIES & PLANS ENGINEER

Examined By: *Nancy Hei*  
 DISTRICT LAND ACQUISITION ENGINEER

Examined By: *Cam Nelson*  
 DISTRICT PROGRAM DEVELOPMENT ENGINEER

Examined By: *Kel Nelly*  
 DISTRICT OPERATIONS ENGINEER

Examined By: *[Signature]*  
 DISTRICT PROJECT IMPLEMENTATION ENGINEER

Examined By: *Daryl [Signature]*  
 DISTRICT CONSTRUCTION ENGINEER

Examined By: *[Signature]*  
 DISTRICT MATERIALS ENGINEER

• FAP 331/FAS 899

FILE NAME =	USER NAME = kranzjc	DESIGNED -	REVISED -
pw:\l084EBIDINTEG\illinois.gov\PWIDOT\Documents\DOT Offices\District 9\Projects\78597\CADData\CADsheets\D978597		DRAWN - Soq_ledex.dgn	REVISED -
Default	PLOT SCALE = 100.0000" / in.	CHECKED -	REVISED -
	PLOT DATE = 9/19/2017	DATE -	REVISED -

**STATE OF ILLINOIS  
 DEPARTMENT OF TRANSPORTATION**

SCALE:	SHEET	OF	SHEETS	STA.	TO STA.	F.A. RTE.	SECTION	COUNTY	TOTAL SHEETS	SHEET NO.
						*	(3-2.8X-1.4-2)TS-1	SALINE	21	2
										CONTRACT NO. 78597
ILLINOIS FED. AID PROJECT										

# INDEX OF SHEETS

SHEET NO.	DESCRIPTION
1	COVER SHEET
2	SIGNATURE SHEET
3	INDEX OF SHEETS, STANDARDS
4	GENERAL NOTES, COMMITMENTS
5 - 8	SUMMARY OF QUANTITIES
9	TYPICAL SECTIONS
10 - 11	SCHEDULES OF QUANTITIES
12	PROPOSED CONSTRUCTION PLAN SHEET
13	REMOVAL PLAN SHEET
14 - 15	PROPOSED PAVEMENT MARKING
16 - 17	PAVEMENT MARKING REMOVAL
18	PROPOSED TRAFFIC SIGNAL PLAN SHEET
19	PROPOSED TRAFFIC SIGNAL WIRING
20	DETAILS: PHASE DESIGNATION DIAGRAM, SEVICE INSTALLATION
21	EXISTING HIGHWAY LIGHTING: FOR INFORMATION ONLY

# HIGHWAY STANDARDS

- 000001-06\_STANDARDS, SYMBOLS, ABBREVIATIONS, PATTERNS
- 001006\_DECIMAL OF INCH AND FOOT
- 483001-05\_PCC SHOULDER
- 701001-02\_OFF-ROAD OPERATIONS, 2L, 2W, MORE THAN 15' AWAY
- 701006-05\_OFF-ROAD OPERATIONS, 2L, 2W, 15' TO 24 FROM PAVEMENT EDGE
- 701011-04\_OFF-ROAD MOVING OPERATIONS, 2L, 2W, DAY ONLY
- 701101-05\_OFF RD OP - MULTI LN - LESS THAN 15FT TO EOP
- 701106-02\_OFF RD OP - MULTI LN - MORE THAN 15 FT AWAY
- 701301-04\_LANE CLOSURE, 2L, 2W, SHORT TIME OPERATIONS
- 701311-03\_LANE CLOSURE, 2L, 2W, MOVING OPERATIONS - DAY ONLY
- 701701-10\_URBAN LN CLOSURE MULTI LN INTERSECTION
- 701901-07\_TRAFFIC CONTROL DEVICES
- 780001-05\_TYPICAL PAVEMENT MARKINGS
- 805001-01\_ELEC SRVC INSTALL DETAILS
- 814001-03\_HANDHOLES
- 857001-01\_STD PHASE DESIGNATION DIAGRAMS & PHASE SEQ
- 862001-01\_UPS
- 873001-02\_TRAF SIGNAL GROUND & BOND
- 877001-07\_STEEL MAST ARM ASSEMBLY & POLE 16' THRU 55'
- 878001-10\_CONCRETE FOUNDATION DETAILS
- 880006-01\_TRAF SIGNAL MOUNT DETAILS-POST & BRACKET MOUNT
- 886001-01\_DETECTOR LOOP INSTALLATIONS
- 886006-01\_TYPICAL LAYOUTS FOR DETECTION LOOPS

• FAP 331/FAS 899

## GENERAL NOTES

1) FACTORS USED FOR ESTIMATING PLAN QUANTITIES ARE AS FOLLOWS AND SHALL NOT BE USED FOR THE BASIS OF FINAL QUANTITIES:

ALL AGGREGATE	2.05 TONS/CU. YD.
---------------	-------------------

- 2) EARTHWORK COMPACTION SHALL BE TO THE SATISFACTION OF THE ENGINEER.
- 3) THE QUANTITY OF SHORT TERM PAVEMENT MARKING SHOWN IN THE PLANS IS BASED ON ONE APPLICATION.
- 4) AT ALL LOCATIONS WHERE THE PROPOSED HOT MIX ASPHALT OR CONCRETE PAVEMENT JOINS AN EXISTING HOT MIX ASPHALT OR CONCRETE PAVEMENT, A FULL DEPTH SAWED JOINT SHALL BE CONSTRUCTED. THE COST OF THIS JOINT WILL BE INCLUDED IN THE COST OF THE TYPE OF PAVEMENT BEING CONSTRUCTED.
- 5) PRIOR TO PLACEMENT OF THE FINAL PAVEMENT MARKINGS THE RESIDENT ENGINEER SHALL CONTACT THE BUREAU OF OPERATIONS AND ARRANGE FOR INSPECTION AND APPROVAL OF THE PAVEMENT MARKING LAYOUT.
- 6) THE FURNISHING AND INSTALLATION OF THE 1 1/2 IN. CONDUIT WITH ITS TRENCHING AND BACKFILL FROM THE LOOP SAWCUT TO THE SPLICE POINT SHALL BE INCLUDED IN THE LOOP INSTALLATION UNLESS SHOWN OTHERWISE ON THE PLANS.
- 7) ALL DETECTOR LOOP CORNERS SHALL BE CORE DRILLED 2 IN. MINIMUM DIAMETER EXCEPT THOSE PLACED UNDER RESURFACING. THE DETECTOR LOOP CORNERS PLACED UNDER RESURFACING SHALL BE DIAGONALLY SAWCUT.
- 8) SAWED SLOTS FOR TWISTED PAIR ELECTRIC CABLES SHALL BE LARGER THAN SINGLE CONDUCTOR LOOP SLOTS.
- 9) THE LOCATION OF THE DETECTOR LOOPS AND TRAFFIC SIGNAL FOUNDATIONS, AS SHOWN ON THE PLANS, MAY BE ADJUSTED TO FIT FIELD CONDITIONS AS DIRECTED BY THE ENGINEER OF TRAFFIC OPERATIONS.
- 10) THERE ARE NO AVAILABLE WASTE SITES ON THE EXISTING RIGHT OF WAY WITHIN THE PROJECT LIMITS. DISPOSAL WILL BE THE RESPONSIBILITY OF THE CONTRACTOR AND WASTE MUST BE DISPOSED OF IN ACCORDANCE WITH ARTICLE 202.03 OF THE STANDARD SPECIFICATIONS.
- 11) STATIONING SHOWN IN THE SCHEDULES IS BASED ON STAMPED STATIONS IN THE EXISTING PAVEMENT AND FROM OLD PLANS. MINOR ADJUSTMENTS MAY BE REQUIRED AS DIRECTED BY THE ENGINEER.
- 12) EXISTING SURFACE DISTURBED DURING EXCAVATION FOR FOUNDATIONS AND PUSH PITS SHALL BE RESTORED TO THE LIMITS AND CONDITION SPECIFIED BY THE ENGINEER OR AS SHOWN ON THE PLANS. UNLESS NOTED OTHERWISE ON THE PLANS THE REMOVAL AND RESTORATION SHALL BE INCLUDED IN THE CONTRACT.
- 13) CABLE QUANTITIES ARE MEASURED IN PLAN VIEW.
- 14) THE LOCATION OF THE DETECTOR LOOPS AND TRAFFIC SIGNAL FOUNDATIONS, AS SHOWN ON THE PLANS, MAY BE ADJUSTED TO FIT FIELD CONDITIONS AS DIRECTED BY THE ENGINEER OF TRAFFIC OPERATIONS.

## COMMITMENTS

NONE

• FAP 331/FAS 899				<b>STATE OF ILLINOIS DEPARTMENT OF TRANSPORTATION</b>		<b>GENERAL NOTES, COMMITMENTS</b>		COUNTY	TOTAL SHEETS	SHEET NO.
FILE NAME =	USER NAME = greenteesm	DESIGNED -	REVISED -	SCALE:      SHEET      OF      SHEETS      STA.      TO STA.		F.A. RTE.	SECTION	SALINE	21	4
pw:\IL04EB\INTEGR\Illinois.gov\PWIDOT\Documents\DOT Offices\District 9\Projects\78597\CADDData\CADsheets\0978597\DRAWN_Soc_1.dgn	PLOT SCALE = 100,0000' / in.	CHECKED -	REVISED -			(3-2,8X-1,4-2)TS-1	CONTRACT NO. 78597			
Default	PLOT DATE = 10/20/2017	DATE -	REVISED -			ILLINOIS   FED. AID PROJECT				

# SUMMARY OF QUANTITIES

COUNTY:	SALINE
ROUTE:	FAP 331 (IL13)
FUNDING:	90% FED 7.5% STATE 2.5% LOCAL
LOCATION:	RURAL
TOTAL QUANTITY	ROADWAY 0021

CODE NUMBER	ITEM DESCRIPTION	UNIT	TOTAL QUANTITY	
35101100	AGGREGATE BASE COURSE, TYPE A 12"	SQ YD	115	115
44004250	PAVED SHOULDER REMOVAL	SQ YD	68	68
44213204	TIE BARS 3/4"	EACH	76	76
48102100	AGGREGATE WEDGE SHOULDER, TYPE B	TON	5	5
48300410	PORTLAND CEMENT CONCRETE SHOULDERS 9 1/2"	SQ YD	100	100
48301000	PROTECTIVE COAT	SQ YD	100	100
67100100	MOBILIZATION	LSUM	1	1
70102635	TRAFFIC CONTROL AND PROTECTION, STANDARD 701701	LSUM	1	1
70103815	TRAFFIC CONTROL SURVEILLANCE	CAL DA	3	3
70300210	TEMPORARY PAVEMENT MARKING LETTERS AND SYMBOLS	SQ FT	73	73
70300220	TEMPORARY PAVEMENT MARKING - LINE 4"	FOOT	3,335	3,335
70300260	TEMPORARY PAVEMENT MARKING - LINE 12"	FOOT	567	567
70300280	TEMPORARY PAVEMENT MARKING - LINE 24"	FOOT	190	190
* 78008200	POLYUREA PAVEMENT MARKING TYPE I - LETTERS AND SYMBOLS	SQ FT	73	73

\* SPECIALTY ITEM

FILE NAME =	USER NAME = green/leam	DESIGNED -	REVISED -	<b>STATE OF ILLINOIS DEPARTMENT OF TRANSPORTATION</b>	<b>SUMMARY OF QUANTITIES</b>	F.A. RTE.	SECTION	COUNTY	TOTAL SHEETS	SHEET NO.
<p style="font-size: small;">p:\w\104\FBI\INTEG.illnois.gov\FWIDOT\Documents\DOT\Office\District 8\Projects\78597\CADD\Sheet\CAD\Sheet\097899\DRAWN_Seq_index.dgn</p>						(3-2,8X-1,4-2)TS-1	SALINE	21	5	CONTRACT NO. 78597
<p style="font-size: small;">PLOT SCALE = 100.0000' / in.</p>						SCALE:	SHEET	OF	SHEETS	STA.
<p style="font-size: small;">PLOT DATE = 10/20/2017</p>						ILLINOIS FED. AID PROJECT				

# SUMMARY OF QUANTITIES - CONT

COUNTY:	SALINE
ROUTE:	FAP 331 (IL13)
FUNDING:	90% FED 7.5% STATE 2.5% LOCAL
LOCATION:	RURAL
TOTAL QUANTITY	ROADWAY
	0021

CODE NUMBER	ITEM DESCRIPTION	UNIT	TOTAL QUANTITY	ROADWAY
* 78008210	POLYUREA PAVEMENT MARKING TYPE I - LINE 4"	FOOT	3,335	3,335
* 78008250	POLYUREA PAVEMENT MARKING TYPE I - LINE 12"	FOOT	567	567
* 78008270	POLYUREA PAVEMENT MARKING TYPE I - LINE 24"	FOOT	190	190
80300100	LOCATING UNDERGROUND CABLE	FOOT	808	808
81028340	UNDERGROUND CONDUIT, PVC, 1 1/2" DIA.	FOOT	293	293
81028350	UNDERGROUND CONDUIT, PVC, 2" DIA.	FOOT	44	44
81028360	UNDERGROUND CONDUIT, PVC, 2 1/2" DIA.	FOOT	361	361
81028370	UNDERGROUND CONDUIT, PVC, 3" DIA.	FOOT	91	91
81028380	UNDERGROUND CONDUIT, PVC, 3 1/2" DIA.	FOOT	115	115
81028390	UNDERGROUND CONDUIT, PVC, 4" DIA.	FOOT	103	103
81400100	HANDHOLE	EACH	5	5
81500100	GULFBOX JUNCTION	EACH	2	2
85700200	FULL-ACTUATED CONTROLLER AND TYPE IV CABINET	EACH	1	1
86200300	UNINTERRUPTABLE POWER SUPPLY, EXTENDED	EACH	1	1

\* SPECIALTY ITEM

# SUMMARY OF QUANTITIES - CONT

COUNTY:	SALINE
ROUTE:	FAP 331 (IL13)
FUNDING:	90% FED 7.5% STATE 2.5% LOCAL
LOCATION:	RURAL
	ROADWAY
	0021

CODE NUMBER	ITEM DESCRIPTION	UNIT	TOTAL QUANTITY	
87301245	ELECTRIC CABLE IN CONDUIT, SIGNAL NO. 14 5C	FOOT	1,718	1,718
87301255	ELECTRIC CABLE IN CONDUIT, SIGNAL NO. 14 7C	FOOT	2,059	2,059
87301305	ELECTRIC CABLE IN CONDUIT, LEAD-IN, NO. 14 1 PAIR	FOOT	663	663
87501200	TRAFFIC SIGNAL POST, 16 FT.	EACH	2	2
87700270	STEEL MAST ARM ASSEMBLY AND POLE, 46 FT.	EACH	2	2
87700320	STEEL MAST ARM ASSEMBLY AND POLE, 55 FT.	EACH	2	2
87800100	CONCRETE FOUNDATION, TYPE A	FOOT	6	6
87800150	CONCRETE FOUNDATION, TYPE C	FOOT	3	3
87800415	CONCRETE FOUNDATION, TYPE E 36-INCH DIAMETER	FOOT	56	56
88040070	SIGNAL HEAD, POLYCARBONATE, LED, 1-FACE, 3-SECTION, BRACKET MOUNTED	EACH	4	4
88040090	SIGNAL HEAD, POLYCARBONATE, LED, 1-FACE, 3-SECTION, MAST ARM MOUNTED	EACH	10	10
88040150	SIGNAL HEAD, POLYCARBONATE, LED, 1-FACE, 5-SECTION, BRACKET MOUNTED	EACH	6	6
88040160	SIGNAL HEAD, POLYCARBONATE, LED, 1-FACE, 5-SECTION, MAST ARM MOUNTED	EACH	2	2
88200510	TRAFFIC SIGNAL BACKPLATE, RETROREFLECTIVE	EACH	12	12

14

# SUMMARY OF QUANTITIES - CONT

COUNTY:	SALINE
ROUTE:	FAP 331 (IL13)
FUNDING:	90% FED 7.5% STATE 2.5% LOCAL
LOCATION:	RURAL
TOTAL QUANTITY	ROADWAY
	0021

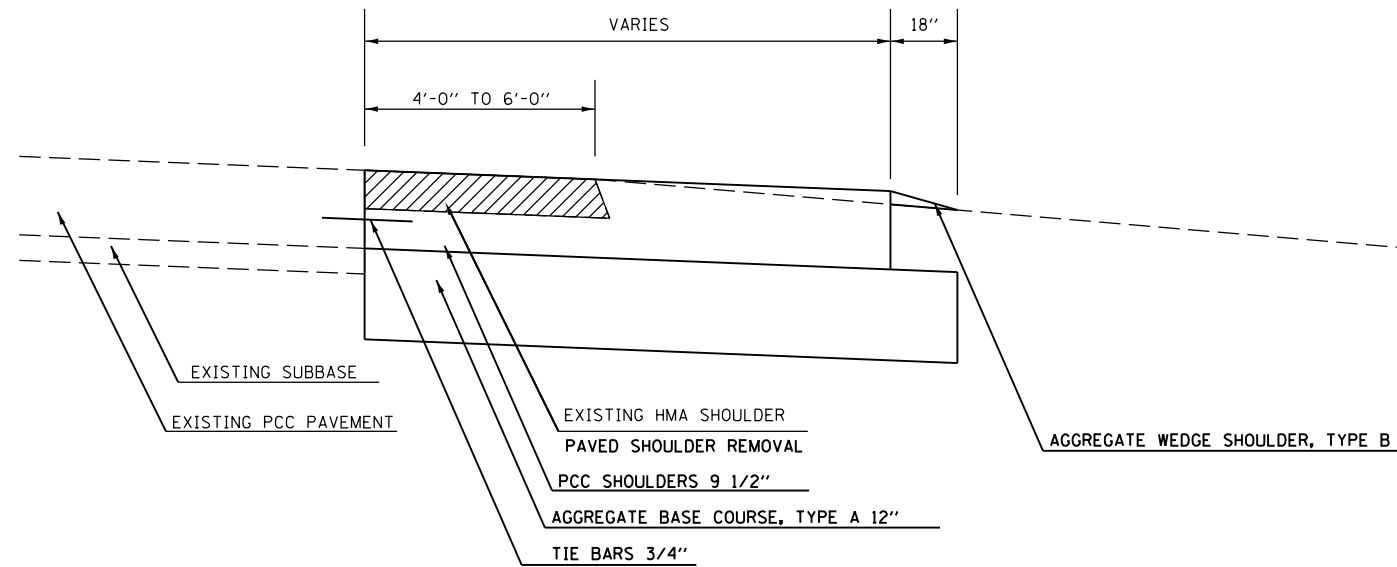
CODE NUMBER	ITEM DESCRIPTION	UNIT	TOTAL QUANTITY	ROADWAY
88600100	DETECTOR LOOP, TYPE I	FOOT	204	204
X0321973	MODIFY EXISTING SERVICE INSTALLATION	EACH	1	1
X0325476	RADAR VEHICLE DETECTION SYSTEM	EACH	1	1
X0327979	PAVEMENT MARKING REMOVAL - GRINDING	SQ FT	1,012	1,012
X7015005	CHANGEABLE MESSAGE SIGN	CAL DA	42	42
Z0010688	CAMERA MOUNTING ASSEMBLY	EACH	4	4
Z0033062	RADIO TRANSCEIVER	EACH	1	1

4

• FAP 331/FAS 899

ILLINOIS FED. AID PROJECT





**TO BE USED:**  
**STA. 963+16 TO STA. 963+30**  
**STA. 964+68 TO STA. 964+84**

FILE NAME =	USER NAME = greenlesm	DESIGNED -	REVISED -
p:\04\EBID\INTEG\Illinois.gov\PWIDOT\Documents\DOT Offices\District 9\Projects\78597\CADDData\CADsheets\0978597\Drawn_Sch_1_1es_GeopakElements.dgn		DRAWN -	REVISED -
Default	PLOT SCALE = 100,0000' / in.	CHECKED -	REVISED -
	PLOT DATE = 10/20/2017	DATE -	REVISED -

**STATE OF ILLINOIS  
DEPARTMENT OF TRANSPORTATION**

<b>TYPICAL</b>	
SCALE:	SHEET OF SHEETS STA. TO STA.

• FAP 331/FAS 899				
F.A. RTE.	SECTION	COUNTY	TOTAL SHEETS	SHEET NO.
*	(3-2.8X-1,4-2)TS-1	SALINE	21	9
			CONTRACT NO. 78597	
		ILLINOIS	FED. AID PROJECT	

## PAVEMENT SCHEDULE

LOCATION STA TO STA	PCC SHOULDERS 9 1/2"	AGGREGATE BASE COURSE, TYPE A 12"	TIE BARS 3/4"	PROTECTIVE COAT	PAVED SHOULDER REMOVAL	AGGREGATE WEDGE SHOULDERS, TYPE B
	SQ YD	SQ YD	EACH	SQ YD	SQ YD	TON
<b>FAP 331 ( IL13)</b>						
STA 963+16. TO STA 963+29.8	52.5	60.5	40.0	52.5	36.0	2.6
STA 964+68. TO STA 964+84.	47.5	54.5	36.0	47.5	32.0	2.4
SCHEDULE TOTAL	100.0	115.0	76.0	100.0	68.0	5.0
PROJECT TOTAL	100.0	115.0	76.0	100.0	68.0	5.0

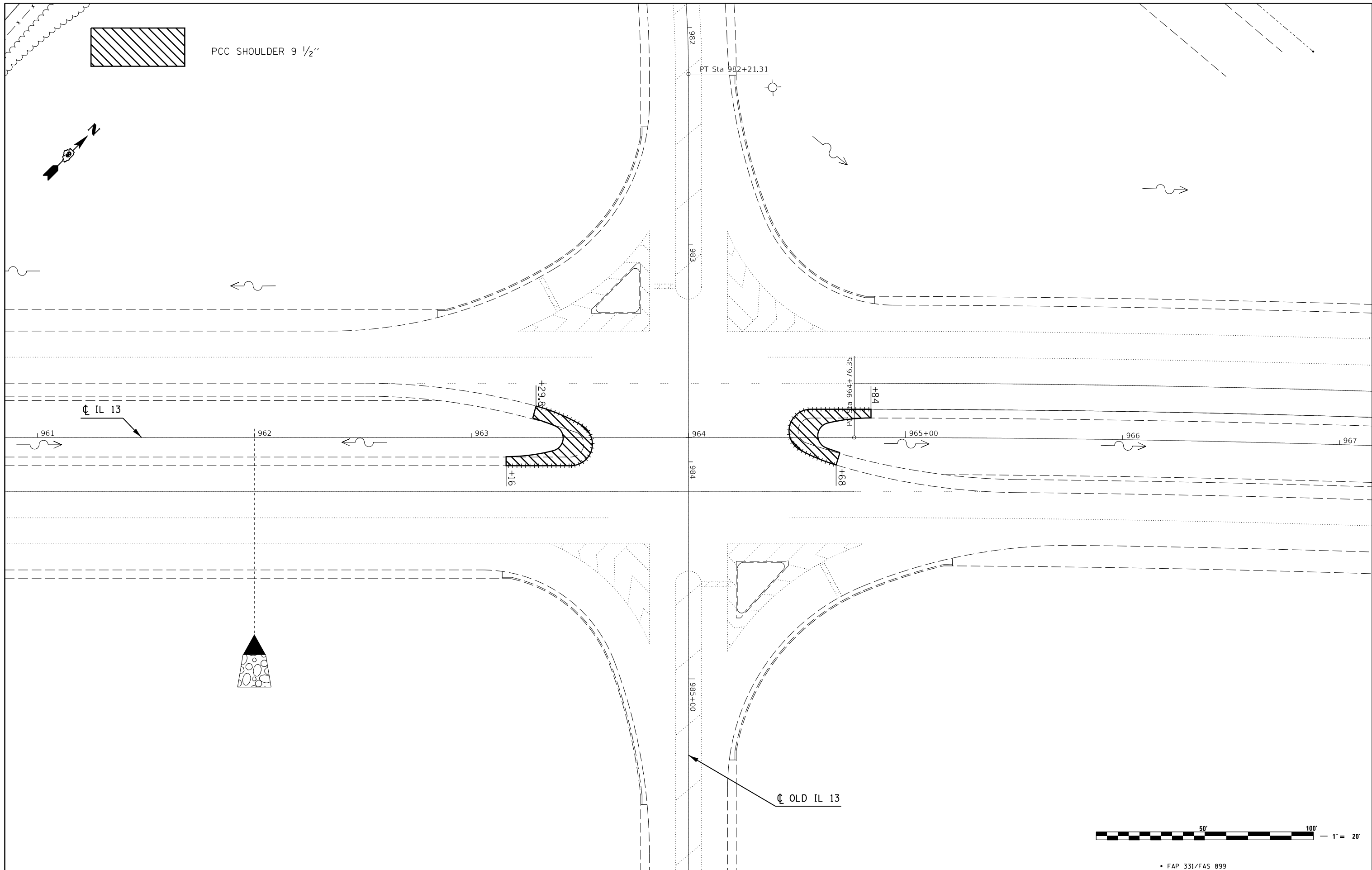
• FAP 331/FAS 899

# PAVEMENT MARKING SCHEDULE

LOCATION: STATION TO STATION	POLYUREA PAVEMENT MARKING					LETTERS & SYMBOLS SQ FT	PAVEMENT MARKING REMOVAL - GRINDING SQ FT
	- LINE 4 INCH		- LINE 12 INCH		- LINE 24 INCH		
	WHITE	YELLOW	WHITE	YELLOW	WHITE		
	SOLID	SOLID	SOLID	SOLID	SOLID		
	FOOT	FOOT	FOOT	FOOT	FOOT		SQ FT
<b>FAP 331</b>							
<b>IL 13</b>							
STA 963+16. TO STA 963+49.2		65.2					
STA 963+16. TO STA 963+61.3	102.8		22.2				
STA 963+45.6 STOP BAR					12.0		
STA 963+70.3 STOP BAR					24.0		
STA 963+91. YIELD							37.3
STA 964+09. YIELD							37.3
STA 964+30.4 STOP BAR					24.0		
STA 964+39.4 TO STA 964+84.1	101.3		23.3				
STA 964+52.4 TO STA 964+84.1		59.5					
STA 964+56.4 STOP BAR					12.0		
<b>FAS899</b>							
<b>OLD IL13</b>							
STA 980+34.4 TO STA 981+95.		637.4		48.6			
STA 980+39.4 TO STA 983+25.1							303.2
STA 981+95. TO STA 983+19.	123.8	247.6					
STA 982+05. ONLY						20.8	
STA 982+38.9 TO STA 962+34.9 (IL13)	204.2		63.5				
STA 982+63. LT ARROW						15.6	
STA 982+92.6 TO STA 963+21.6 (IL13)							104.1
STA 982+94.5 TO STA 983+40.	159.0		110.0				
STA 983+02.8 TO STA 983+39.8	125.2		45.5				
STA 983+19. STOP BAR					24.0		
STA 983+19. STOP BAR							24.2
STA 983+27.5 STOP BAR					18.0		
STA 983+29.8 STOP BAR					16.4		
STA 983+30.5 STOP BAR							36.0
STA 984+37.8 TO STA 984+83.8	158.9		105.7				
STA 984+37.8 TO STA 984+78.5	133.0		51.5				
STA 984+46.4 STOP BAR							36.0
STA 984+47.8 STOP BAR					17.6		
STA 984+50.1 STOP BAR					18.0		
STA 984+50.3 STOP BAR							32.0
STA 984+56. STOP BAR					24.0		
STA 984+56. TO STA 985+81.	125.0	250.0					
STA 984+86. TO STA 987+36.							298.0
STA 984+87.3 TO STA 964+80.7 (IL13)							103.9
STA 985+12. LT ARROW						15.6	
STA 985+42.9 TO STA 965+78.8 (IL13)	220.8		50.6				
STA 985+70. ONLY						20.8	
STA 985+81. TO STA 987+36.		621.3		46.1			
SUBTOTALS:	1,454.0	1,881.0	472.3	94.7			
<b>IMPROVEMENT TOTALS:</b>	<b>3,335.0</b>		<b>567.0</b>		<b>190.0</b>	<b>72.8</b>	<b>1,012.0</b>

• FAP 331/FAS 899

FILE NAME =	USER NAME = greenteesm	DESIGNED -	REVISED -	<b>STATE OF ILLINOIS DEPARTMENT OF TRANSPORTATION</b>	<b>SCHEDULE</b>			F.A. RTE.	SECTION	COUNTY	TOTAL SHEETS	SHEET NO.
pw:\IL04EB\INTEG\Illinois.gov\PWIDOT\Documents\DOT Offices\District 9\Projects\78597\CADData\CADsheets\I0978597\Drawn_Sch_1_01_GeopakElements.dgn		CHECKED -	REVISED -						(3-2.8X-1.4-2)TS-1		21	11
Default	PLOT SCALE = 100,0000 /in.	DATE -	REVISED -		SCALE:	SHEET	OF	SHEETS	STA.	TO STA.	CONTRACT NO. 78597	
	PLOT DATE = 10/20/2017										ILLINOIS FED. AID PROJECT	



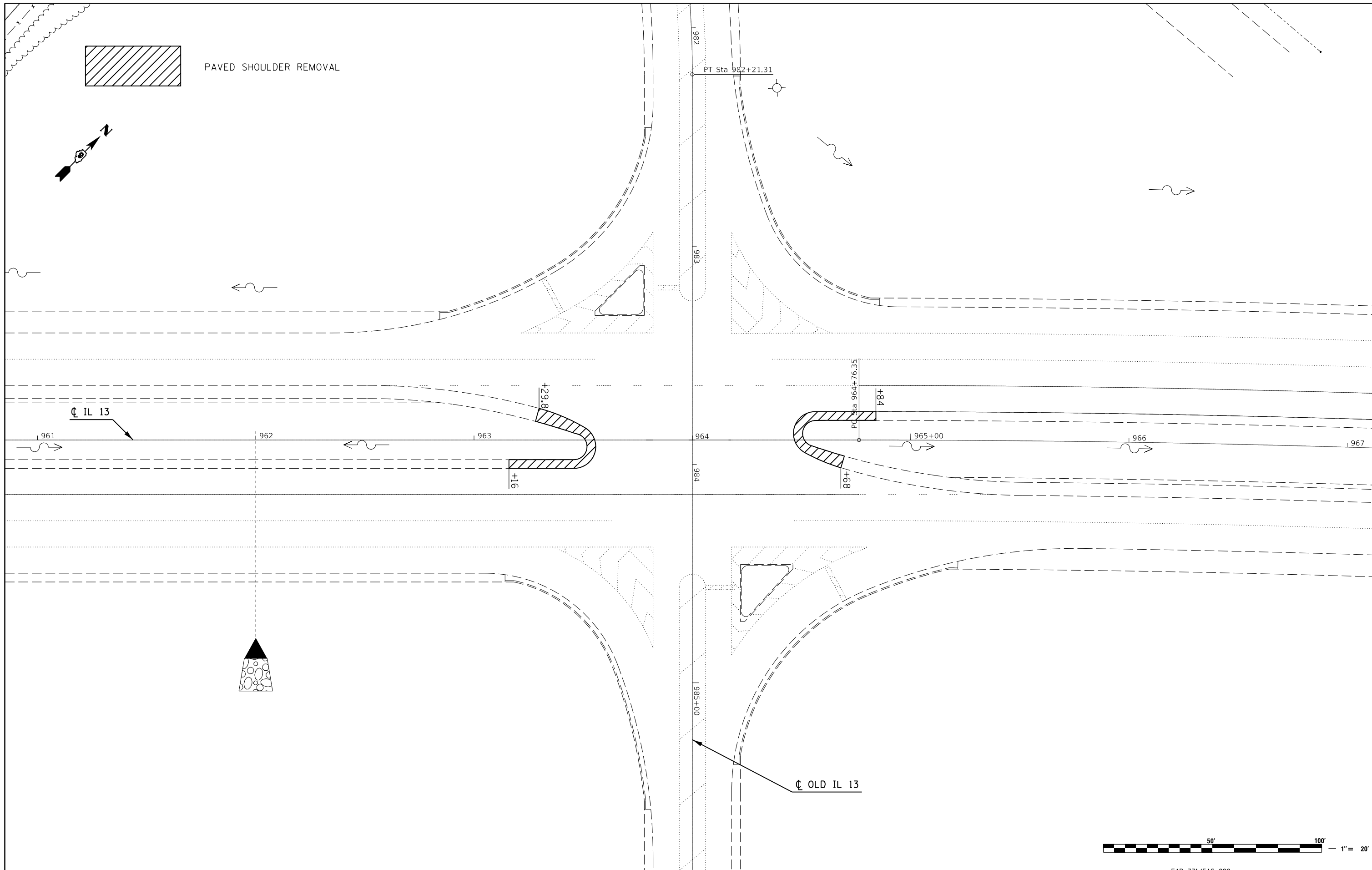
FILE NAME =	USER NAME = greenleesm	DESIGNED -	REVISED -
pwz\IL084EBID\INTEG\Illinois.gov\PWIDOT\Documents\IDOT Offices\District 9\Projects\78597\CADDData\CADs\97-514-C-Plan_Prof.dgn		DRAWN -	REVISED -
	PLOT SCALE = 40.0000 ' / in.	CHECKED -	REVISED -
Default	PLOT DATE = 10/20/2017	DATE -	REVISED -

**STATE OF ILLINOIS  
DEPARTMENT OF TRANSPORTATION**

**PROPOSED CONSTRUCTION SHEET**

SCALE:      SHEET      OF      SHEETS      STA.      TO      STA.

• FAP 331/FAS 899				
F.A. RTE.	SECTION	COUNTY	TOTAL SHEETS	SHEET NO.
*	(3-2,8X-1,4-2)TS-1	SALINE	21	12
CONTRACT NO. 78597				
ILLINOIS FED. AID PROJECT				



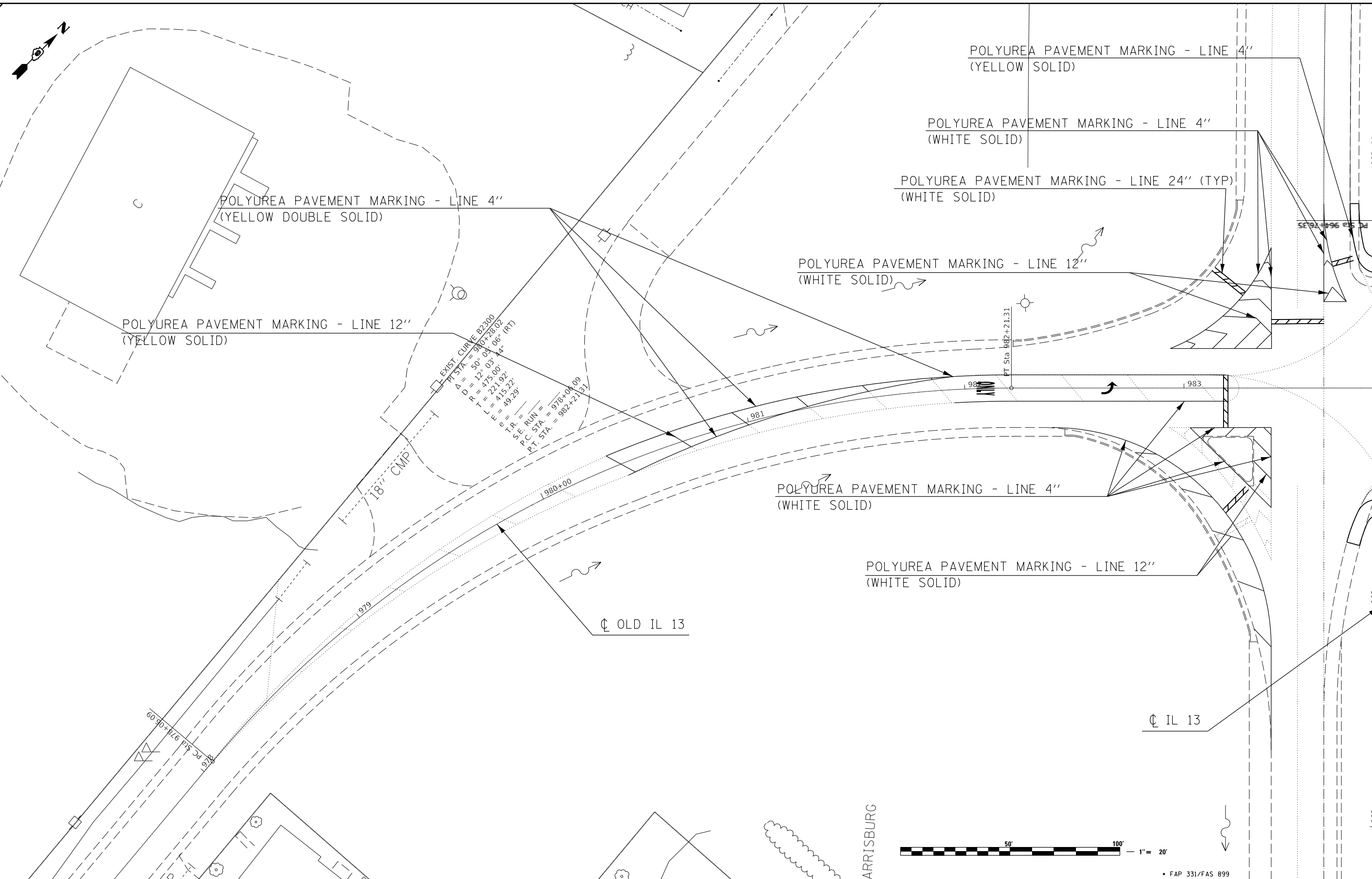
FILE NAME =	USER NAME = greenleesm	DESIGNED -	REVISED -
pwz\IL084EBID\INTEG.illinois.gov\PWIDOT\Documents\IDOT Offices\District 9\Projects\78597\CADData\CAD\97-514-C-Plan_Prof.dgn		DRAWN -	REVISED -
Default	PLOT SCALE = 40.0000 ' / in.	CHECKED -	REVISED -
	PLOT DATE = 10/20/2017	DATE -	REVISED -

**STATE OF ILLINOIS  
DEPARTMENT OF TRANSPORTATION**

**REMOVAL SHEET**

SCALE:      SHEET      OF      SHEETS      STA.      TO      STA.

• FAP 331/FAS 899				
F.A. RTE.	SECTION	COUNTY	TOTAL SHEETS	SHEET NO.
*	(3-2,8X-1,4-2)TS-1	SALINE	21	13
CONTRACT NO. 78597				
ILLINOIS FED. AID PROJECT				



EXIST. CURVE B2200  
 P.C. STA. = 980+23.02  
 A = 50' 03' 06" (RT)  
 D = 475.00'  
 L = 221.92'  
 E = 415.22'  
 T.R. = 49.29'  
 S.E. RUN = 978+06.09  
 P.C. STA. = 982+21.31  
 P.T. STA. = 982+21.31



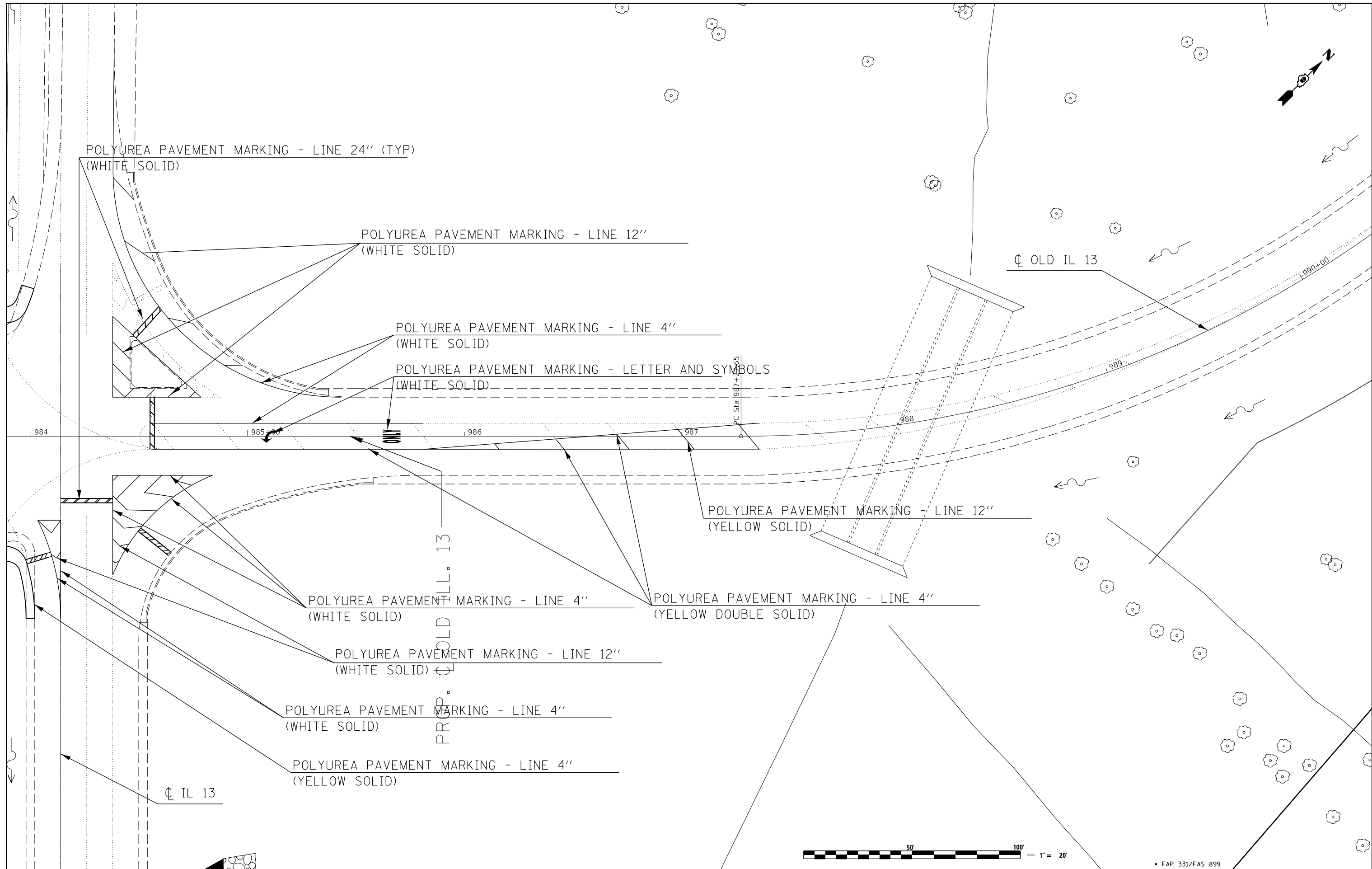
• FAP 331/FAS 899

FILE NAME =	USER NAME = greenleesm	DESIGNED -	REVISED -
pwz\l084EBID\INTEG.illinois.gov\PWIDOT\Documents\IDOT Offices\District 9\Projects\78597\CADData\CAD\Drawings\97-514G-Rdwy_Details.dgn		CHECKED -	REVISED -
Default	PLOT SCALE = 40.0000 ' / in.	DATE -	REVISED -
	PLOT DATE = 10/20/2017		

**STATE OF ILLINOIS  
 DEPARTMENT OF TRANSPORTATION**

<b>PAVEMENT MARKING</b>			
SCALE:	SHEET	OF SHEETS	STA. TO STA.

F.A. RTE.	SECTION	COUNTY	TOTAL SHEETS	SHEET NO.
+	(3-2,8X-1,4-2)TS-1	SALINE	21	14
CONTRACT NO. 78597				
ILLINOIS FED. AID PROJECT				



POLYUREA PAVEMENT MARKING - LINE 24" (TYP)  
(WHITE SOLID)

POLYUREA PAVEMENT MARKING - LINE 12"  
(WHITE SOLID)

POLYUREA PAVEMENT MARKING - LINE 4"  
(WHITE SOLID)

POLYUREA PAVEMENT MARKING - LETTER AND SYMBOLS  
(WHITE SOLID)

POLYUREA PAVEMENT MARKING - LINE 12"  
(YELLOW SOLID)

POLYUREA PAVEMENT MARKING - LINE 4"  
(WHITE SOLID)

POLYUREA PAVEMENT MARKING - LINE 4"  
(YELLOW DOUBLE SOLID)

POLYUREA PAVEMENT MARKING - LINE 12"  
(WHITE SOLID)

POLYUREA PAVEMENT MARKING - LINE 4"  
(WHITE SOLID)

POLYUREA PAVEMENT MARKING - LINE 4"  
(YELLOW SOLID)

OLD IL 13

IL 13

PRP. OLD ILL. 13

PC Sta 987+265



FAP 331/FAS 899

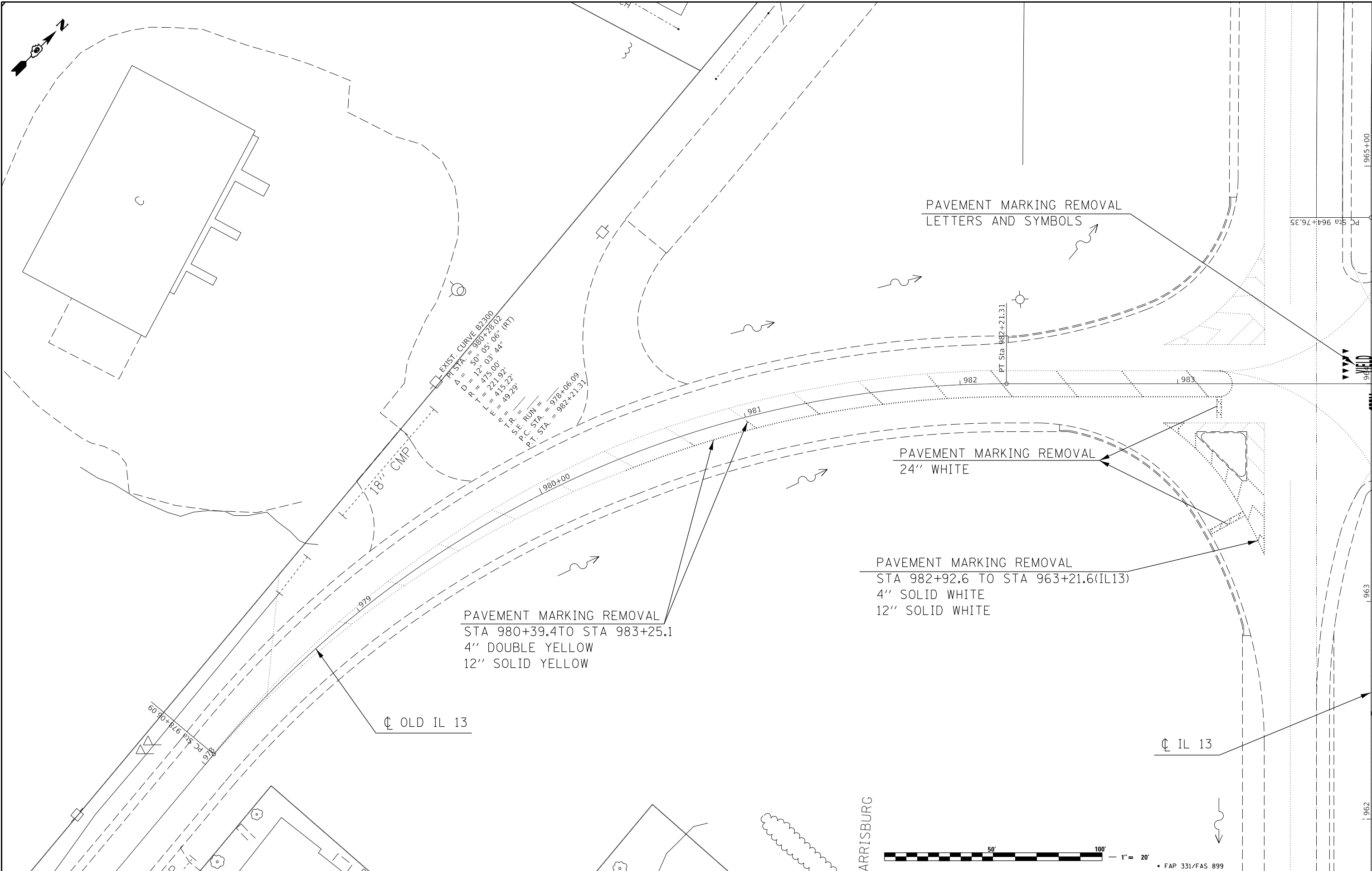
FILE NAME =	USER NAME = greenleesm	DESIGNED -	REVISED -
pwz\IL084EBID\INTEG\Illinois.gov\PWIDOT\Documents\IDOT Offices\District 9\Projects\78597\CADData\CAD\Drawings\97-514-G-Rdwy_Details.dgn		CHECKED -	REVISED -
Default	PLOT SCALE = 40.0000 ' / in.	DATE -	REVISED -
	PLOT DATE = 10/20/2017		

**STATE OF ILLINOIS  
DEPARTMENT OF TRANSPORTATION**

**PAVEMENT MARKING**

SCALE: SHEET OF SHEETS STA. TO STA.

F.A. RTE.	SECTION	COUNTY	TOTAL SHEETS	SHEET NO.
+	(3-2,8X-1,4-2)TS-1	SALINE	21	15
CONTRACT NO. 78597				
ILLINOIS FED. AID PROJECT				



EXIST. CURVE B2200  
 P.C. STA. = 980+23.02  
 A = 50° 05' 06" (RT)  
 D = 475.00'  
 R.T. = 415.22'  
 L.E. = 49.29'  
 T.R. =  
 S.E. RUN = 978+06.09  
 P.C. STA. = 982+21.31  
 P.T. STA. = 982+21.31



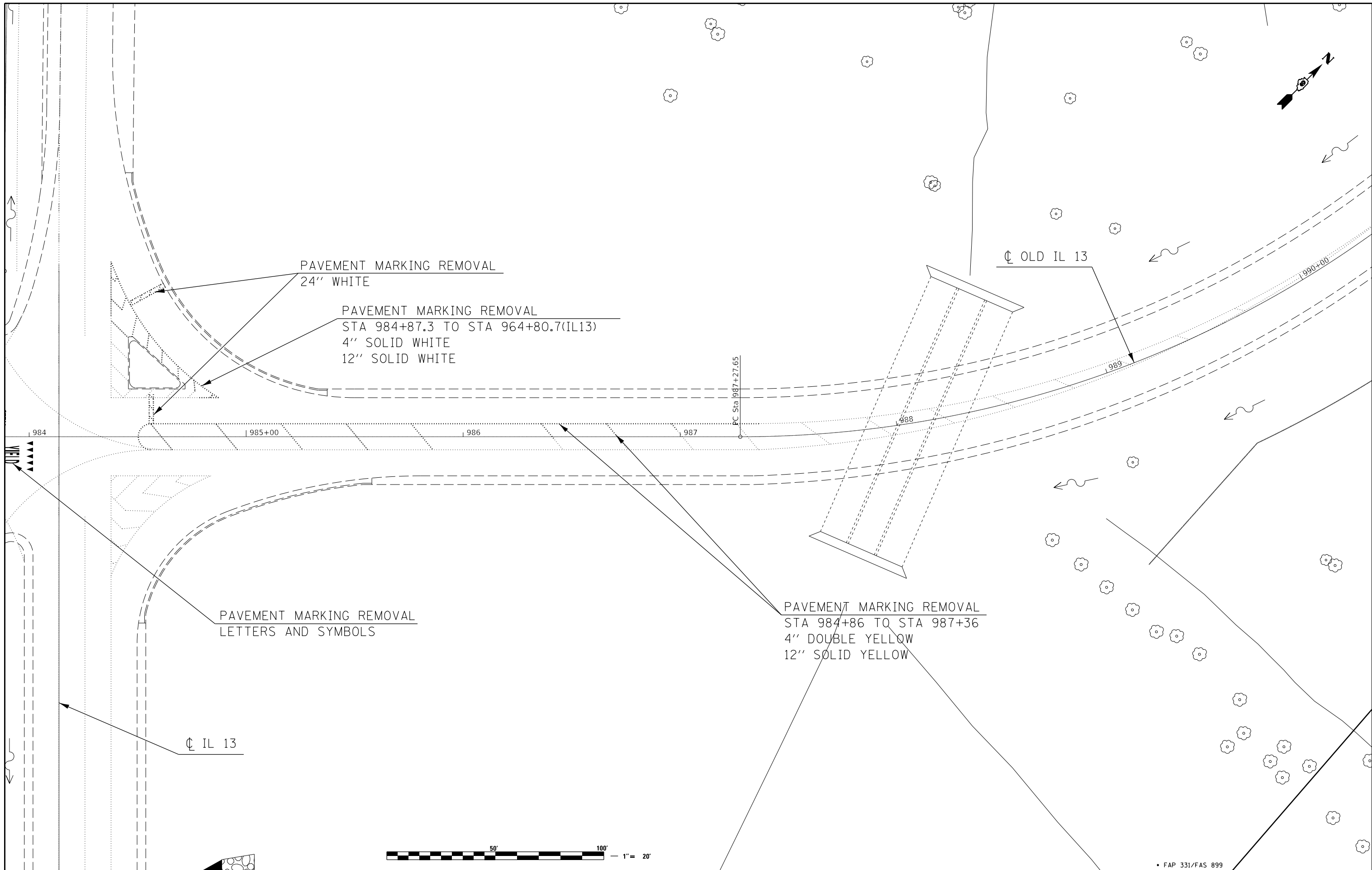
FILE NAME =	USER NAME = greenleesm	DESIGNED -	REVISED -
pwz\l084EBID\INTEG.illinois.gov\PWIDOT\Documents\IDOT Offices\District 9\Projects\78597\CADData\CAD\Drawings\97-514-G-Rdwy_Details.dgn		CHECKED -	REVISED -
Default	PLOT SCALE = 40.0000' / in.	DATE -	REVISED -
	PLOT DATE = 10/20/2017		

**STATE OF ILLINOIS  
 DEPARTMENT OF TRANSPORTATION**

<b>PAVEMENT MARKING REMOVAL</b>	
SCALE:	SHEET OF SHEETS STA. TO STA.

F.A. RTE.	SECTION	COUNTY	TOTAL SHEETS	SHEET NO.
+	(3-2,8X-1,4-2)TS-1	SALINE	21	16
CONTRACT NO. 78597				
ILLINOIS FED. AID PROJECT				





PAVEMENT MARKING REMOVAL  
24" WHITE

PAVEMENT MARKING REMOVAL  
STA 984+87.3 TO STA 964+80.7(IL13)  
4" SOLID WHITE  
12" SOLID WHITE

CL OLD IL 13

VEND

PAVEMENT MARKING REMOVAL  
LETTERS AND SYMBOLS

PAVEMENT MARKING REMOVAL  
STA 984+86 TO STA 987+36  
4" DOUBLE YELLOW  
12" SOLID YELLOW

CL IL 13



• FAP 331/FAS 899

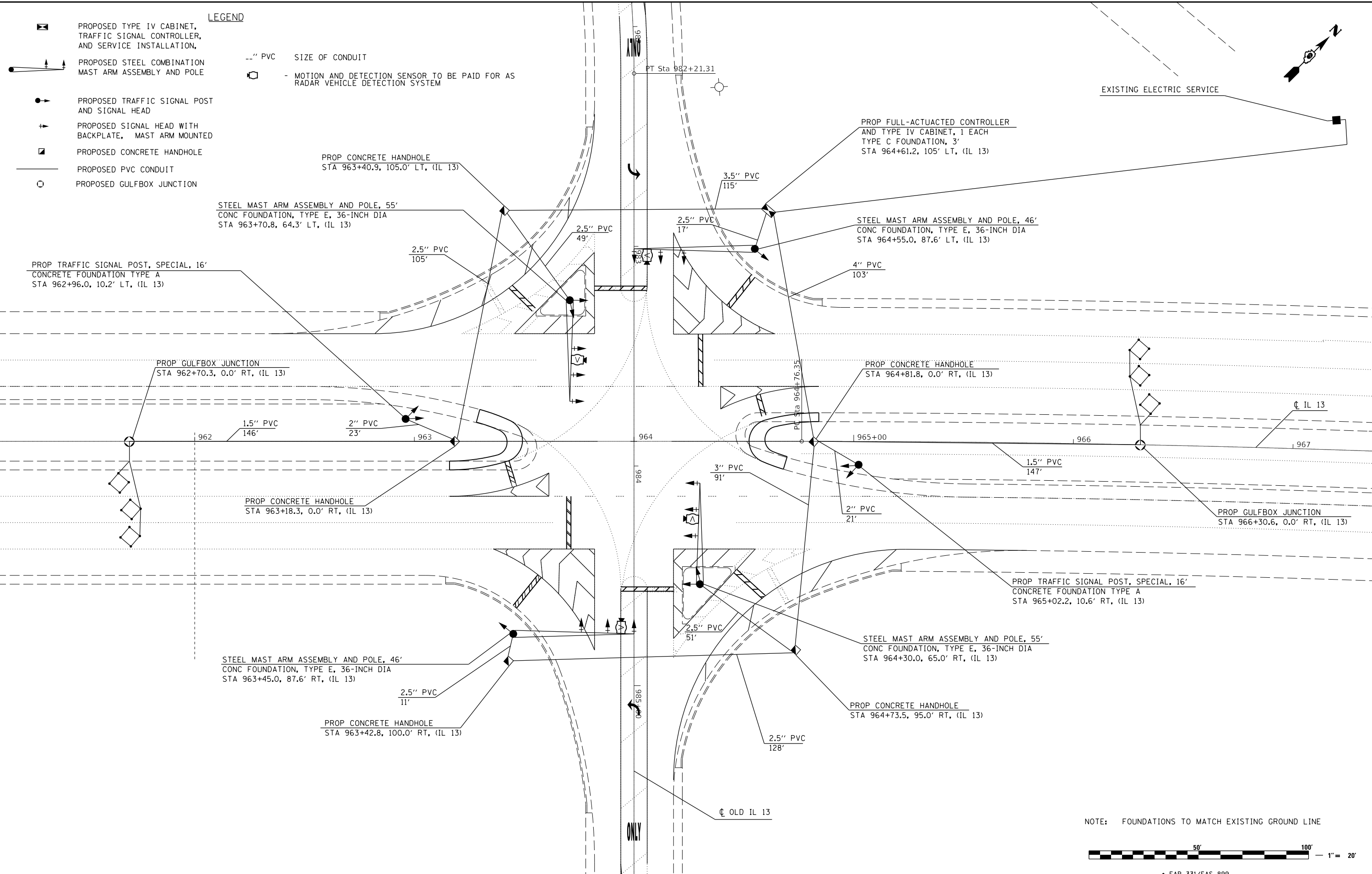
FILE NAME =	USER NAME = greenleesm	DESIGNED -	REVISED -
pw:\IL084EBID\INTEG\Illinois.gov\PWIDOT\Documents\IDOT_Offices\District 9\Projects\78597\CADDData\CAD\Drawings\97-514-G-Rdwy_Details.dgn		CHECKED -	REVISED -
Default	PLOT SCALE = 40.0000 ' / in.	DATE -	REVISED -
	PLOT DATE = 10/20/2017		

**STATE OF ILLINOIS  
DEPARTMENT OF TRANSPORTATION**

**PAVEMENT MARKING REMOVAL**

SCALE: SHEET OF SHEETS STA. TO STA.

F.A. RTE.	SECTION	COUNTY	TOTAL SHEETS	SHEET NO.
+	(3-2,8X-1,4-2)TS-1	SALINE	21	17
CONTRACT NO. 78597				
ILLINOIS FED. AID PROJECT				



**LEGEND**

- PROPOSED TYPE IV CABINET, TRAFFIC SIGNAL CONTROLLER, AND SERVICE INSTALLATION,
- PROPOSED STEEL COMBINATION MAST ARM ASSEMBLY AND POLE
- PROPOSED TRAFFIC SIGNAL POST AND SIGNAL HEAD
- PROPOSED SIGNAL HEAD WITH BACKPLATE, MAST ARM MOUNTED
- PROPOSED CONCRETE HANDHOLE
- PROPOSED PVC CONDUIT
- PROPOSED GULFBOX JUNCTION
- " PVC SIZE OF CONDUIT
- MOTION AND DETECTION SENSOR TO BE PAID FOR AS RADAR VEHICLE DETECTION SYSTEM

EXISTING ELECTRIC SERVICE

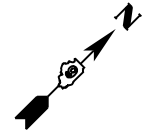
NOTE: FOUNDATIONS TO MATCH EXISTING GROUND LINE



• FAP 331/FAS 899

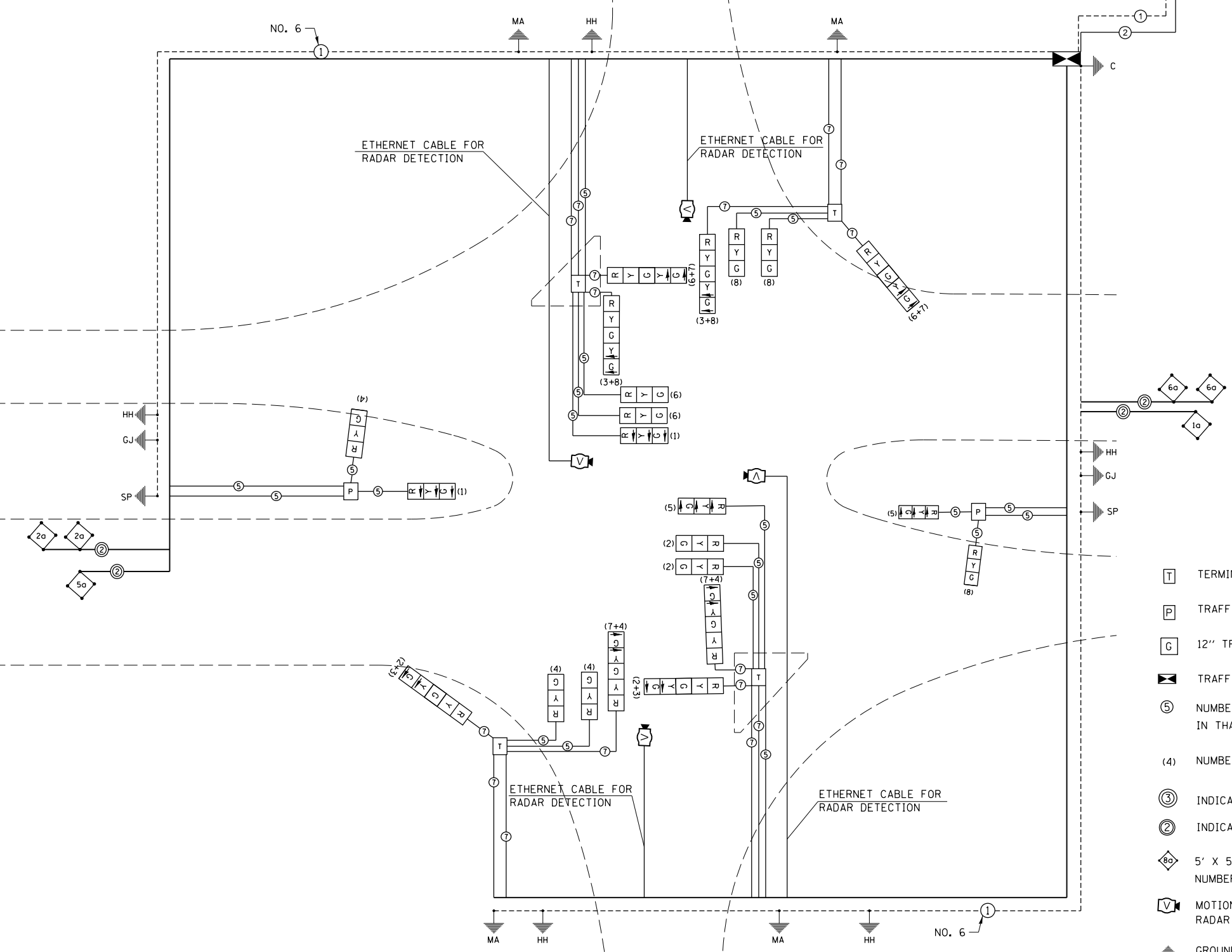
FILE NAME =	USER NAME = greenleesm	DESIGNED -	REVISED -	<b>STATE OF ILLINOIS DEPARTMENT OF TRANSPORTATION</b>	<b>PROPOSED TRAFFIC SIGNALS</b>	F.A. RTE.	SECTION	COUNTY	TOTAL SHEETS	SHEET NO.	
pwz\l084EBIDINTEG.illinois.gov:PWIDOT\Documents\IDOT Offices\District 9\Projects\78597\CADD\CAD\Drawings\97-514-G-Rdwy_Details.dgn		CHECKED -	REVISED -			+	(3-2,8X-1,4-2)TS-1	SALINE	21	18	
PLOT SCALE = 40.0000 ' / in.		DATE -	REVISED -			CONTRACT NO. 78597					
Default						ILLINOIS FED. AID PROJECT					

SCALE: SHEET OF SHEETS STA. TO STA.



**NOTES**

1. ALL CABLES SHALL BE A.W.G. #14 UNLESS OTHERWISE NOTED.
2. ELECTRIC SERVICE IS EXISTING FROM HIGHWAY LIGHTING.
3. PROPOSED COAXIAL CABLE AND ANTENNA INCLUDED IN THE COST OF FULL-ACTUATED CONTROLLER IN TYPE IV CABINET.
4. ALL SIGNAL LENSES SHALL BE 12 INCHES.



**LEGEND**

- T TERMINAL BLOCK IN MAST ARM POLE BASE (SEE SPECIAL PROVISIONS).
- P TRAFFIC SIGNAL POST
- G 12" TRAFFIC SIGNAL SECTION. LETTER INDICATES COLOR.
- ☒ TRAFFIC SIGNAL CONTROLLER CABINET
- ⑤ NUMBER IN CIRCLE INDICATES NUMBER OF CONDUCTORS IN THAT CABLE
- (4) NUMBER IN PARENTHESIS INDICATES PHASE
- ③ INDICATES #18/3 CONDUCTOR CABLE
- ② INDICATES 2/C TWISTED, SHIELDED CABLE IN CONDUIT
- ◇ 5' X 5' DETECTOR LOOP WITH 2" CORE DRILLED CORNERS. NUMBER INDICATES PHASE, LOWER CASE LETTER INDICATES AMPLIFIER.
- V MOTION AND DETECTION SENSOR TO BE PAID FOR AS RADAR VEHICLE DETECTION SYSTEM
- ↑ GROUND CONNECTION
- EXISTING ELECTRIC SERVICE

• FAP 331/FAS 899

FILE NAME =	USER NAME = greenleesm	DESIGNED -	REVISED -
pwz\IL084EBIDINTEG.illinois.gov\PWIDOT\Documents\IDOT Offices\District 9\Projects\78597\CADData\CADs\97-514G-Rdwy_Details.dgn		CHECKED -	REVISED -
Default	PLOT SCALE = 40.0000 ' / in.	DATE -	REVISED -
	PLOT DATE = 10/20/2017		

**STATE OF ILLINOIS  
DEPARTMENT OF TRANSPORTATION**

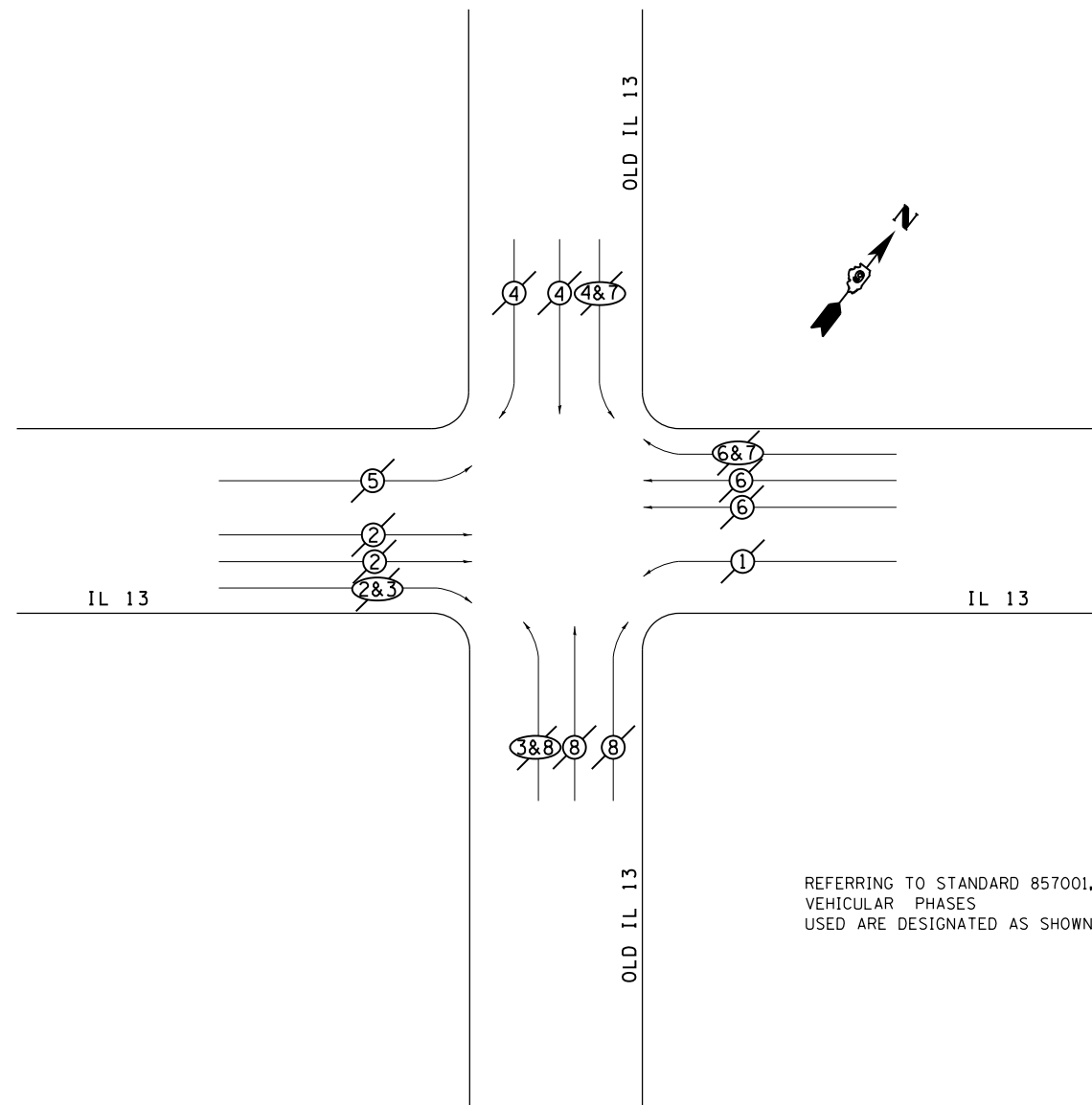
**PROPOSED TRAFFIC SIGNALS  
CABLE DIAGRAM**

SCALE: SHEET OF SHEETS STA. TO STA.

F.A. RTE.	SECTION	COUNTY	TOTAL SHEETS	SHEET NO.
+	(3-2,8X-1,4-2)TS-1	SALINE	21	19
CONTRACT NO. 78597				
ILLINOIS FED. AID PROJECT				

# PHASE DESIGNATION DIAGRAM

## IL 13 WITH OLD IL 13



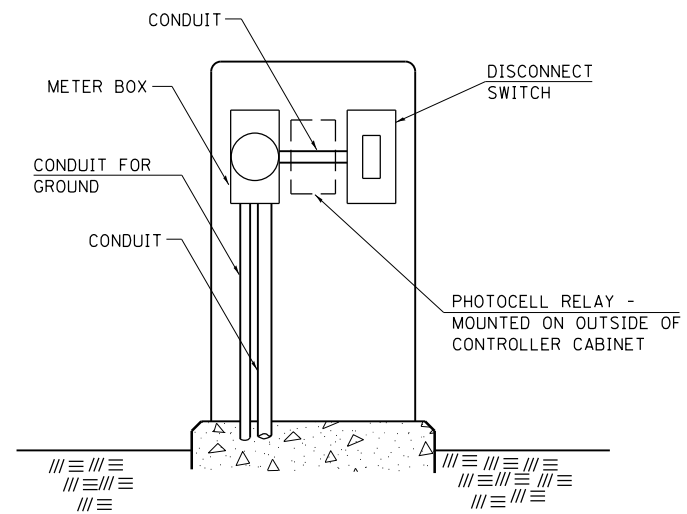
REFERRING TO STANDARD 857001, THE VEHICULAR PHASES USED ARE DESIGNATED AS SHOWN.

**LEGEND**

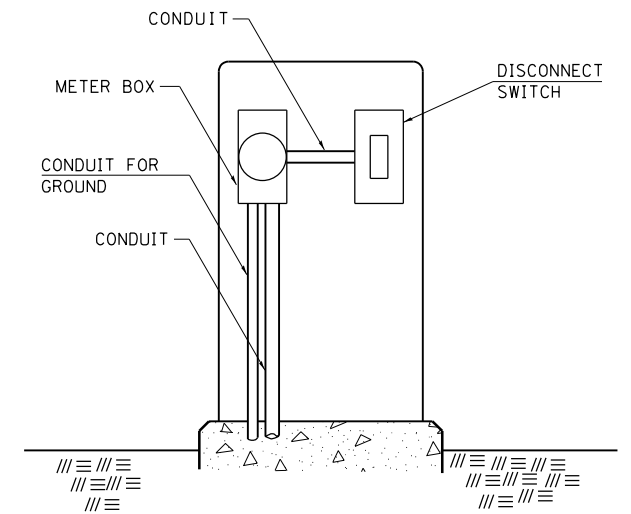
← ⊙ → VEHICULAR MOVEMENT

\* NUMBER REFERS TO ASSOCIATED PHASE

### SERVICE INSTALLATION DETAILS



SERVICE INSTALLATION (SPECIAL)  
WITH PHOTOCELL RELAY



SERVICE INSTALLATION (SPECIAL)

**NOTE:**  
MATERIAL AND SIZE OF CONDUIT AND CABLE AS REQUIRED BY UTILITY COMPANY

REVISIONS	
DRAWN	1-31-90
REVISED	2-24-92
RESIZED	5-7-08

STD. 9-68

FAP 331/FAS 899

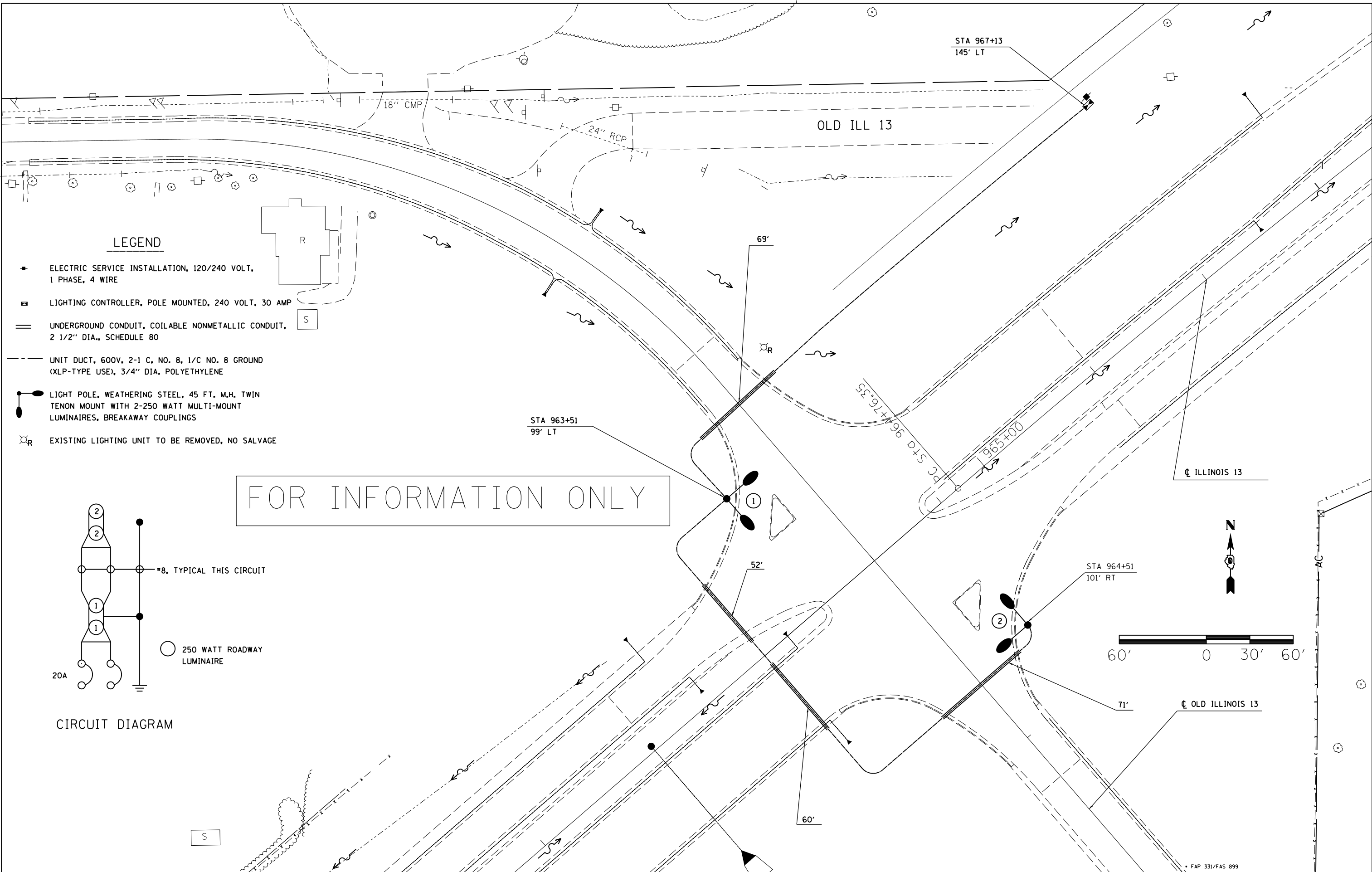
FILE NAME =	USER NAME = greenleesm	DESIGNED -	REVISED -
pwz\l084EBIDINTEG.illinois.gov\PWIDOT\Documents\IDOT_Offices\District 9\Projects\78597\CADDData\CADs\97-514-G-Rdwy_Details.dgn			
PLOT SCALE = 40.0000 ' / in.	CHECKED -	REVISED -	
Default	DATE -	REVISED -	

STATE OF ILLINOIS  
DEPARTMENT OF TRANSPORTATION

DETAILS: PHASE DESIGNATION DIAGRAM,  
SERVICE INSTALLATION

SCALE: SHEET OF SHEETS STA. TO STA.

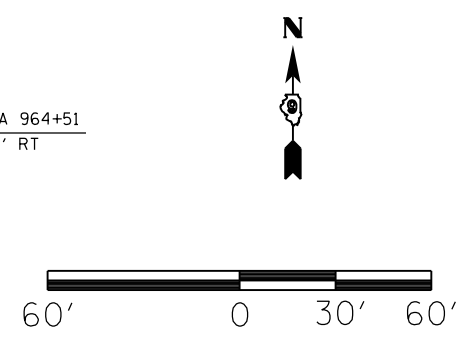
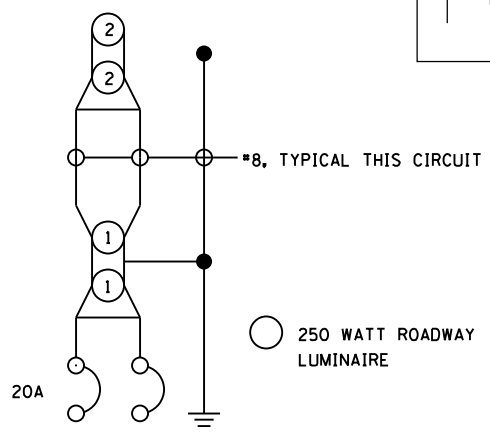
F.A. RTE.	SECTION	COUNTY	TOTAL SHEETS	SHEET NO.
+	(3-2,8X-1,4-2)TS-1	SALINE	21	20
				CONTRACT NO. 78597
		ILLINOIS	FED. AID PROJECT	



**LEGEND**

- ELECTRIC SERVICE INSTALLATION, 120/240 VOLT, 1 PHASE, 4 WIRE
- LIGHTING CONTROLLER, POLE MOUNTED, 240 VOLT, 30 AMP
- ══ UNDERGROUND CONDUIT, COILABLE NONMETALLIC CONDUIT, 2 1/2" DIA., SCHEDULE 80
- - - UNIT DUCT, 600V, 2-1 C, NO. 8, 1/C NO. 8 GROUND (XLP-TYPE USE), 3/4" DIA. POLYETHYLENE
- LIGHT POLE, WEATHERING STEEL, 45 FT. M.H. TWIN TENON MOUNT WITH 2-250 WATT MULTI-MOUNT LUMINAIRES, BREAKAWAY COUPLINGS
- ⊙ R EXISTING LIGHTING UNIT TO BE REMOVED, NO SALVAGE

FOR INFORMATION ONLY



FILE NAME =	USER NAME = greenleem	DESIGNED -	REVISED -	<b>STATE OF ILLINOIS DEPARTMENT OF TRANSPORTATION</b>	<b>EXISTING HIGHWAY LIGHTING TO BE LEFT IN PLACE</b>				F.A.P. RTE.	SECTION	COUNTY	TOTAL SHEETS	SHEET NO.		
pw:\IL\084EBIDINTEG.illinois.gov\PIWIDOT\Documents\IDOT Offices\District 9\Projects\78597\Drawings\CAD\Sheets\0978597-ShtG-Rdwy.Dwg		DRAWN -	REVISED -		SCALE:	SHEET	OF	SHEETS	STA.	TO	STA.	(3-2,8X-1,4-2)TS-1	SALINE	21	21
Default	PLOT SCALE = 60.0000' / in.	CHECKED -	REVISED -									CONTRACT NO. 78597			
	PLOT DATE = 10/20/2017	DATE -	REVISED -									ILLINOIS FED. AID PROJECT			