

STATE OF ILLINOIS  
DEPARTMENT OF TRANSPORTATION

F & I RTE	SECTION	COUNTY	TOTAL SHEETS	SHEET NO.
39	ILU 2023-1	OGLE	22*	1
ILLINOIS CONTRACT NO. 64R56				

\* 22 + 1 = 23 TOTAL SHEETS

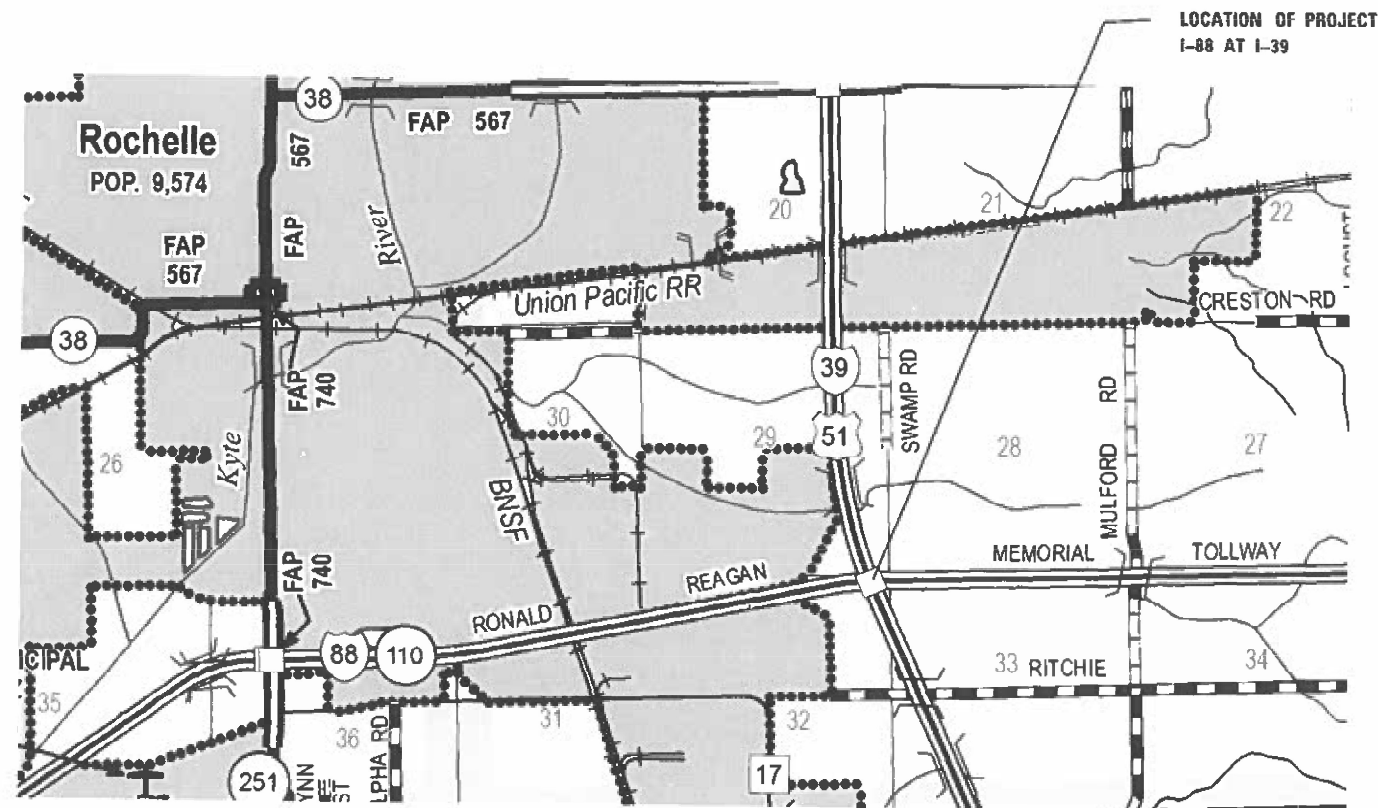
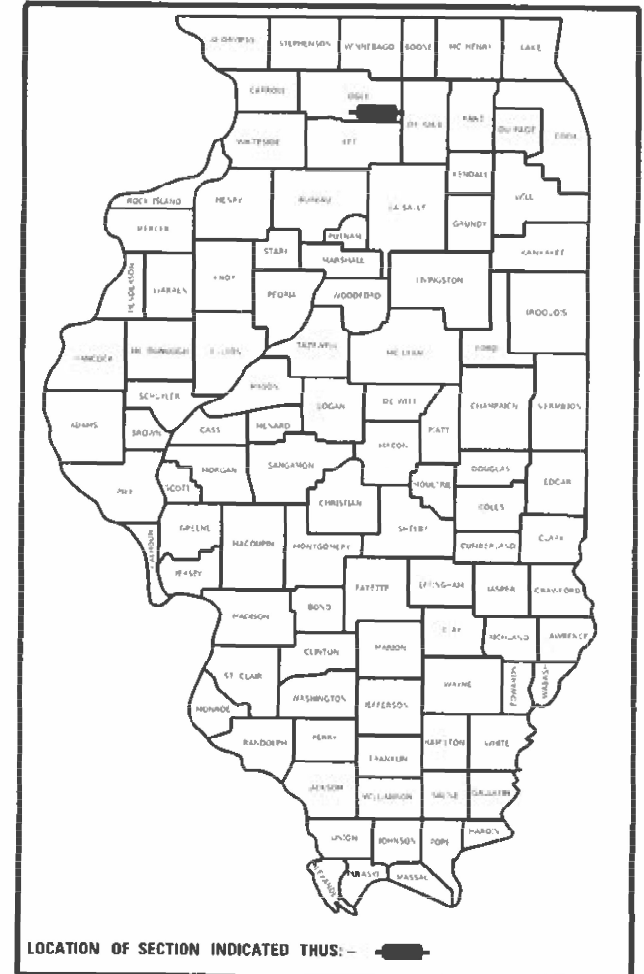
P92-001-22

FOR INDEX OF SHEETS, SEE SHEET NO. 2

# PROPOSED HIGHWAY PLANS

FAI ROUTE 39 (I-39)  
SECTION ILU 2023-1  
PROJECT NHPP-IY3T(983)  
LIGHTING UPGRADE  
OGLE COUNTY

C-92-066-22



DEMENT TWP. - SEC. 28,29,32 & 33

J.U.L.I.E.  
JOINT UTILITY LOCATION INFORMATION FOR EXCAVATORS  
1-800-892-0123  
OR 811

PROJECT ENGINEER SCOTT KULLERSTRAND  
PROJECT MANAGER KRISTINE HILL

CONTRACT NO. 64R56

STATE OF ILLINOIS  
DEPARTMENT OF TRANSPORTATION

SUBMITTED DEC 8 23  
20

*David Arnoldson*  
REGIONAL ENGINEER

December 8, 2023

*Scott Kullerstrand*  
ENGINEER OF DESIGN AND ENVIRONMENT

December 8, 2023

*Steph McQuinn*  
DIRECTOR OF HIGHWAYS PROJECT IMPLEMENTATION

PRINTED BY THE AUTHORITY  
OF THE STATE OF ILLINOIS

## INDEX OF SHEETS

1	COVER SHEET
2	INDEX OF SHEETS, LEGEND, CONDUCTOR SCHEDULE, AND HIGHWAY STANDARDS
3	SUMMARY OF QUANTITIES
4	UTILITIES
5	LUMINAIRE PERFORMANCE TABLE AND WIRING DIAGRAMS
6	LIGHTING SHEETS LAYOUT
7-14	LIGHTING REMOVAL PLANS
15-23	PROPOSED LIGHTING PLANS

OR SPEEDS  $\geq$  45 MPH

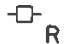




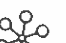





## HIGHWAY STANDARDS

821101-02	LUMINAIRE WIRING IN POLE
825021-04	LIGHTING CONTROLLER BASE MOUNT 240V
830001-03	LIGHT POLE ALUMINUM MAST ARM
836001-04	LIGHT POLE FOUNDATION
838001-01	BREAKAWAY DEVICES
701101-05	OFF-RD OPERATIONS, MULTILANE, 15' (4.5 m) TO 24" (600 mm) FROM PAVEMENT EDGE
701400-12	APPROACH TO LANE CLOSURE, FREEWAY/EXPRESSWAY
701406-13	LANE CLOSURE, FREEWAY/EXPRESSWAY, DAY OPERATIONS ONLY
701411-09	LANE CLOSURE, MULTILANE, AT ENTRANCE OR EXIT RAMP, FOR SPEEDS $\geq$ 45 MPH
701426-09	LANE CLOSURE, MULTILANE, INTERMITTENT OR MOVING OPER., FOR SPEEDS $\geq$ 45 MPH
701456-05	PARTIAL EXIT RAMP CLOSURE FREEWAY/EXPRESSWAY
701901-09	TRAFFIC CONTROL DEVICES

## CONDUCTOR SCHEDULE

- ① UNIT DUCT, 600V, 2-1C NO. 8, 1/C NO. 8 GROUND (XLP-TYPE USE) 3/4" DIA. POLYETHYLENE
- ② UNIT DUCT, 600V, 2-1C NO. 6, 1/C NO. 8 GROUND (XLP-TYPE USE) 3/4" DIA. POLYETHYLENE
- ③ EXISTING UNIT DUCT TO REMAIN

## LEGEND

-  R EXISTING SERVICE TO BE REMOVED
-  PROPOSED ELECTRIC SERVICE 240V
-  R EXISTING LIGHTING CONTROLLER TO BE REMOVED
-  PROPOSED LIGHTING CONTROLLER, BASE MOUNTED 240V
-  R EXISTING LIGHT TOWER FOUNDATION TO BE REMOVED
-  R EXISTING LIGHT TOWER AND FOUNDATION TO BE REMOVED
-  E EXISTING LIGHTING UNIT 50 FT MOUNTING HEIGHT
-  PROPOSED LIGHTING UNIT, ALUMINUM POLE, 40 FT MOUNTING HEIGHT, WITH 15' MAST ARM, ON BREAKAWAY COUPLINGS WITH STAINLESS STEEL SCREEN, AND LUMINAIRE, LED, ROADWAY, OUTPUT DESIGNATION H
-  EXISTING UNIT DUCT TO REMAIN
-  PROPOSED UNIT DUCT, SIZED AS NOTED
-  PROPOSED COILABLE NONMETALLIC CONDUIT SIZED AS NOTED

MODEL: D:\aut\... FILE NAME: ... PLOT DATE: ...

USER NAME = Kristy Hill	DESIGNED -	REVISED -
PLOT SCALE = 103 8/31 11 in	DRAWN -	REVISED -
PLOT DATE = Oct-04-2023 10:22:07 AM	CHECKED -	REVISED -
	DATE -	REVISED -

STATE OF ILLINOIS  
DEPARTMENT OF TRANSPORTATION

I-88 AT I-39  
LEGEND, SCHED, SOQ & STANDARDS

PAV. RTE.	SECTION	COUNTY	TOTAL SHEETS	SHEET NO.
39	ILU 2023-1	OGLE	22	2
CONTRACT NO. 64R56				

90% FED  
10% STATE  
0021

90% FED  
10% STATE  
0021

PAY ITEM	DESCRIPTION	UNIT	QUANTITY
* 66900200	NON-SPECIAL WASTE DISPOSAL	CU YD	20
* 66901001	REGULATED SUBSTANCES PRE CONSTRUCTION PLAN	L SUM	1
* 66901006	REGULATED SUBSTANCES MONITORING	CAL DA	20
* 66901003	REGULATED SUBSTANCES FINAL CONSTRUCTION REPORT	L SUM	1
* 66900530	SOIL DISPOSAL ANALYSIS	EACH	1
67100100	MOBILIZATION	EACH	1
70100700	TRAFFIC CONTROL AND PROTECTION, STANDARD 701406	L SUM	1
70100420	TRAFFIC CONTROL AND PROTECTION, STANDARD 701411	EACH	1
70100825	TRAFFIC CONTROL AND PROTECTION, STANDARD 701456	L SUM	1
80400100	ELECTRIC SERVICE INSTALLATION	EACH	1
81028750	UNDERGROUND CONDUIT, COILABLE NONMETALLIC, 2" DIA.	FOOT	360
81028790	UNDERGROUND CONDUIT, COILABLE NONMETALLIC, 4" DIA.	FOOT	410

\*= SPECIALTY ITEM

PAY ITEM	DESCRIPTION	UNIT	QUANTITY
81603000	UNIT DUCT, 600V, 2-1C NO. 1/C NO. 8, GROUND, (XLP-TYPE USE), 3/4" DIA. POLYETHYLENE	FOOT	10,000
81603040	UNIT DUCT, 600V, 2-1C NO.6, 1/C NO.8 GROUND, (XLP-TYPE USE), 1" DIA. POLYETHYLENE	FOOT	10,500
82110008	LUMINAIRE, LED, ROADWAY, OUTPUT DESIGNATION H	EACH	30
82500350	LIGHTING CONTROLLER, BASE MOUNTED, 240VOLT, 100AMP	EACH	1
83008600	LIGHT POLE, ALUMINUM, 40FT. M.H. 15 FT. MAST ARM	EACH	26
83600356	LIGHT POLE FOUNDATION, METAL, 15" BOLT CIRCLE 8 5/8" x 6'	EACH	26
83800650	BREAKAWAY DEVICE, COUPLING WITH STAINLESS STEEL SCREEN	EACH	104
84500110	REMOVAL OF LIGHTING CONTROLLER	EACH	1
84500120	REMOVAL OF ELECTIC SERVICE INSTALLATION	EACH	1
84500130	REMOVAL OF LIGHTING CONTROLLER FOUNDATION	EACH	1
89502300	REMOVE ELECTRIC CABLE FROM CONDUIT	FOOT	43,500
X2501000	SEEDING, CLASS 2 (SPECIAL)	ACRE	1.2
X8420502	REMOVAL OF LIGHT TOWER, NO SALVAGE	EACH	6
X8420510	REMOVAL OF TOWER FOUNDATION	EACH	7

MODEL: D:\m\l... FILE NAME: ...

USER NAME =	DESIGNED =	REVISED =
DRAWN =	CHECKED =	REVISED =
DATE =	DATE =	REVISED =

STATE OF ILLINOIS  
DEPARTMENT OF TRANSPORTATION

I-88 AT I-39	
SUMMARY OF QUANTITIES	
SCALE	SHEET OF SHEETS STA. TO STA.

F.A.I. RTE	SECTION	COUNTY	TOTAL SHEETS	SHEET NO.
39	ILU 2023-1	OGLE	21	3
CONTRACT NO. 64R56			ILLINOIS FED. AID PROJECT	



## Luminaire Performance Table

### Project

Date	Contract Number	Section Number	County
10/12/22	64R56	ILU 2023-1	OGLE
Marked Route Number		Municipality	
I-39 AT I-88		UNINCORPORATED	

### Roadway

Lane Width	*of Lanes	Median Width	I.E.S Surface Classification	O-Zero Value
12	2	N/A	R3	0.07

### Structure

Mounting Height	Arm Length	Set Back	Number of Luminaires (Highmast & Sign Lighting Only)
40 FT	15 FT	20 FT	N/A

### Luminaire

Description	I.E.S. Lateral Distribution	I.E.S. Vertical Distribution
ROADWAY, OUTPUT DESIGNATION H	TYPE III	MEDIUM
Total Light Loss Factor (LLF)	BUG Rating	Shields
0.7	U = 0	N/A
		Dimming Protocol
		0-10V

### Layout

Spacing (to Nearest 5 Ft) Configuration (Opposite, Staggered, 1 Sided, or Median)
155 FT SINGLE SIDED

### Performance

Average Illuminance, $E_{AVE}$ (fc)	Uniformity Ratio, $E_{AVE}/E_{MIN}$
GREATER THAN OR EQUAL TO 1.3	LESS THAN OR EQUAL TO 3.0:1
Average Luminance, $L_{AVE}$ (cd/m <sup>2</sup> )	Uniformity Ratio, $L_{AVE}/L_{MIN}$
GREATER THAN OR EQUAL TO 0.9	LESS THAN OR EQUAL TO 3.0:1
	Uniformity Ratio, $L_{MAX}/L_{MIN}$
	LESS THAN OR EQUAL TO 5.0:1
	Veiling Luminance Ratio, $L_v/L_{MIN}$
	LESS THAN OR EQUAL TO 0.3:1

### Light Trespass

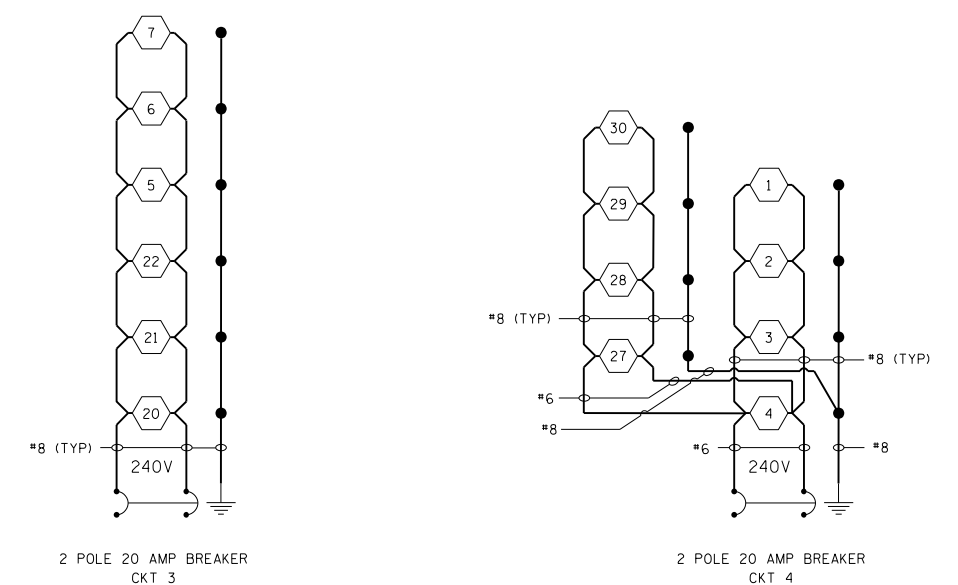
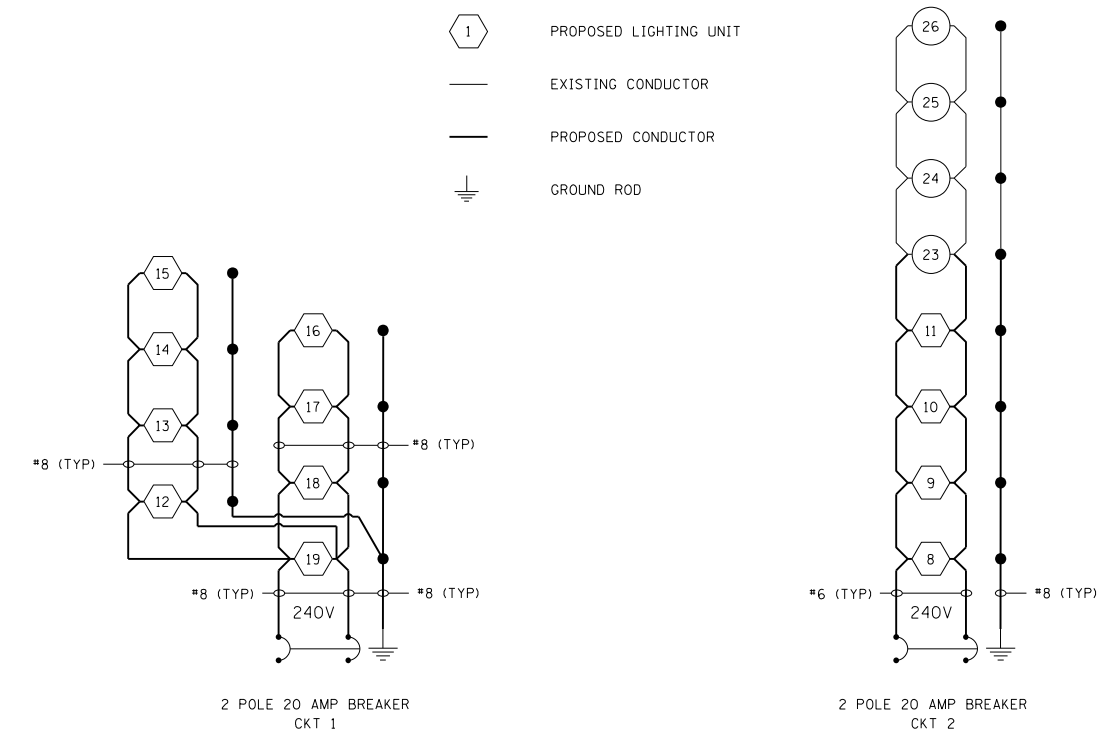
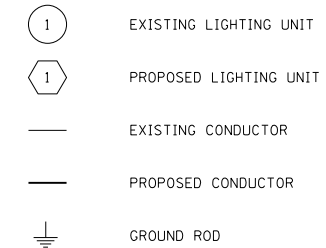
Distance to ROW (behind pole)	Max. Horizontal Illuminance at ROW, E	Max. Vertical Illuminance at ROW, E
N/A	N/A	N/A

### Notes

1. Set Back is from Edge of Pavement (white line) except for sign luminaires when it is vertical and horizontal distance from the sign to the luminaire.
2. Lighting calculations shall be performed with all luminaires oriented toward and perpendicular to roadway.
3. Total Light Loss Factor (LLF) = the product of "Lumen Maintenance" (LLD) = 0.9, "Dirt Depreciation" (LDD) = 0.8, and "Equipment Factors" (EF) = 0.95.
4. Performance requirements shall be the minimum acceptable standards of photometric performance for the luminaire, based on the given conditions above.
5. Photometric calculations shall be performed on one direction only.
6. Compliance with performance criteria shall be held to one significant digit.
7. Luminaire performance table defines the luminaire does not necessarily reflect the roadway geometry, the mounting height, or the arm length of the equipment supplied with this project.

### NOTES:

1. ALL NECESSARY REVISIONS TO THE WIRING SHOWN ON THIS SHEET SHALL BE MADE AT NO ADDITIONAL COST TO THE DEPARTMENT AND TO THE SATISFACTION OF THE ENGINEER.



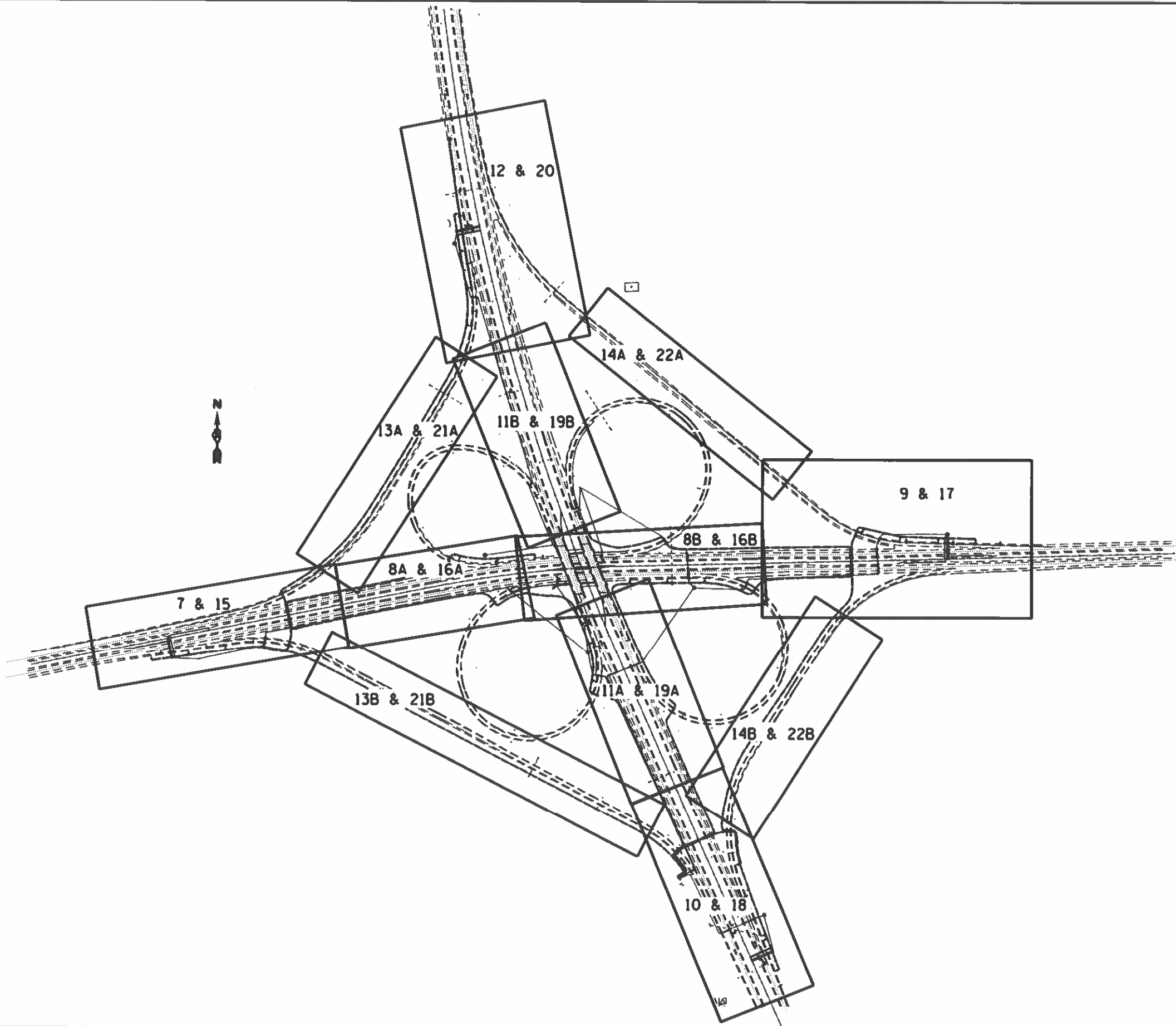
MODEL: Default  
FILE NAME: S:\GENELECTRICAL\Engineers\Boulter\Current Projects\ILU 2023-1\Bfrom MRICADD\02-64R56\_Sht\_Light\_Cover.dgn

USER NAME = Michael.Poulter	DESIGNED - _____	REVISED - _____
	DRAWN - _____	REVISED - _____
PLOT SCALE = 100,0000' / in.	CHECKED - _____	REVISED - _____
PLOT DATE = 11/17/2023	DATE - _____	REVISED - _____

**STATE OF ILLINOIS  
DEPARTMENT OF TRANSPORTATION**

<b>I-88 AT I-39</b>	
<b>PERF TAB &amp; WIRING DIAGRAM</b>	
SCALE: _____	SHEET _____ OF _____ SHEETS
STA. _____	TO STA. _____

F.A.I. RTE.	SECTION	COUNTY	TOTAL SHEETS	SHEET NO.
39	ILU 2023-1	OGLE	21	5
CONTRACT NO. 64R56				
ILLINOIS FED. AID PROJECT				



MODEL: D:\draft\...  
 FILE NAME: ...  
 PLOT DATE: ...

USER NAME	— Kristine Hill	DESIGNED	—	REVISED	—
DRAWN	—	CHECKED	—	REVISED	—
PLOT SCALE	— 570 2450' / in.	DATE	—	REVISED	—
PLOT DATE	— Oct-04-2023 11:07:20 AM				

**STATE OF ILLINOIS**  
**DEPARTMENT OF TRANSPORTATION**

**I-88 AT I 39**  
**LIGHTING SHEET LAYOUT**

SCALE: SHEET OF SHEETS STA. TO STA.

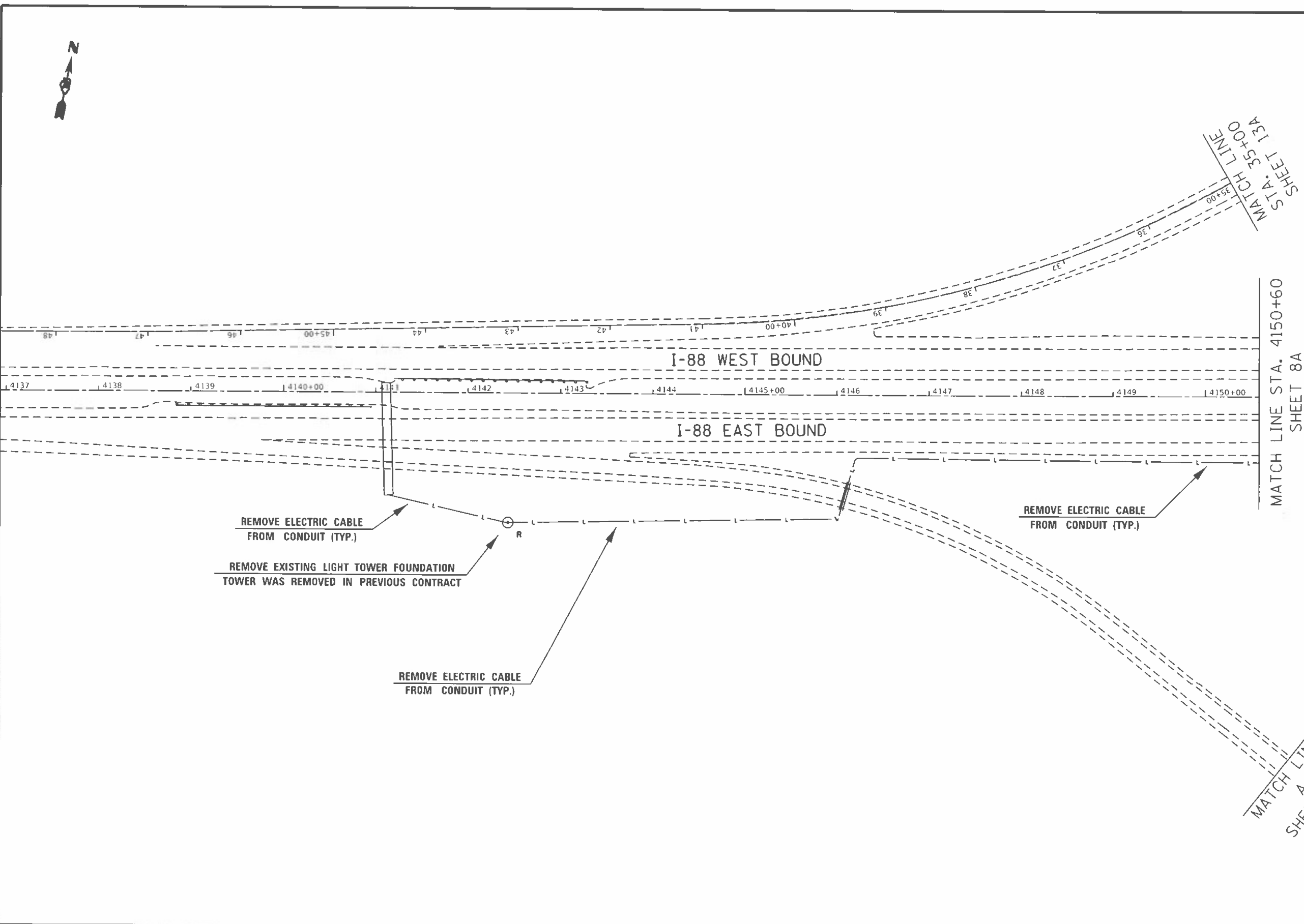
F.A.I. RTE.	SECTION	COUNTY	TOTAL SHEETS	SHEET NO.
39	ILU 2023-1	OGLE	22	6
CONTRACT NO. 64R56				
ILLINOIS FED. AID PROJECT				



MATCH LINE  
STA. 35+00  
SHEET 13A

MATCH LINE STA. 4150+60  
SHEET 8A

MATCH LINE  
SHEET 13B



MODEL: D:\p104\104001\104001.dwg  
FILE NAME: D:\p104\104001\104001.dwg  
PROJECT: I-88 AT I-39  
DRAWN: KJH/MLP  
CHECKED: JLD  
DATE: OCT 04 2023 10:55:28 AM

USER NAME = KJH/MLP	DESIGNED	REVISED
PLOT SCALE = 105.9878 1/8" = 1'	DRAWN	REVISED
PLOT DATE = OCT 04 2023 10:55:28 AM	CHECKED	REVISED
	DATE	REVISED

**STATE OF ILLINOIS  
DEPARTMENT OF TRANSPORTATION**

<b>I-88 AT I-39 LIGHTING REMOVAL</b>	
SCALE:	SHEET OF SHEETS STA. TO STA.

PAT	SECTION	COUNTY	TOTAL SHEETS	SHEET NO.
39	ILU 2023-1	OGLE	22	7
CONTRACT NO. 64R56				
ILLINOIS FED AID PROJECT				

MATCH LINE STA. 4150+60  
SHEET 7

I-88 WEST BOUND

I-88 EAST BOUND

MATCH LINE STA. 4161+50  
SHEET 8B

REMOVE ELECTRIC CABLE  
FROM CONDUIT (TYP.)

REMOVE ELECTRIC CABLE  
FROM CONDUIT (TYP.)

REMOVE ELECTRIC CABLE  
FROM CONDUIT (TYP.)

8A

MATCH LINE STA. 1410+80  
SHEET 11B

REMOVE ELECTRIC CABLE  
FROM CONDUIT (TYP.)

REMOVE ELECTRIC CABLE  
FROM CONDUIT (TYP.)

I-88 WEST BOUND

I-88 EAST BOUND

MATCH LINE STA. 4173+30  
SHEET 9

REMOVE ELECTRIC CABLE  
FROM CONDUIT (TYP.)

REMOVE ELECTRIC CABLE  
FROM CONDUIT (TYP.)

REMOVE ELECTRIC CABLE  
FROM CONDUIT (TYP.)

REMOVE ELECTRIC CABLE  
FROM CONDUIT (TYP.)

8B

USER NAME = Kristine Hill	DESIGNED -	REVISED -
PLOT SCALE = 103.3430 1/2 in.	DRAWN -	REVISED -
PLOT DATE = Oct-04-2023 02:15:49 PM	CHECKED -	REVISED -
	DATE	REVISED -

STATE OF ILLINOIS  
DEPARTMENT OF TRANSPORTATION

I-88 AT I-39  
LIGHTING REMOVAL

F/A DATE 39	SECTION ILU 2023-1	COUNTY OGLE	TOTAL SHEETS 22	SHEET NO 8
CONTRACT NO. 64R56				
ILLINOIS FED. AID PROJECT				

SCALE SHEET OF SHEETS STA TO STA

MODEL: D:\civ\p\... FILE NAME: ...

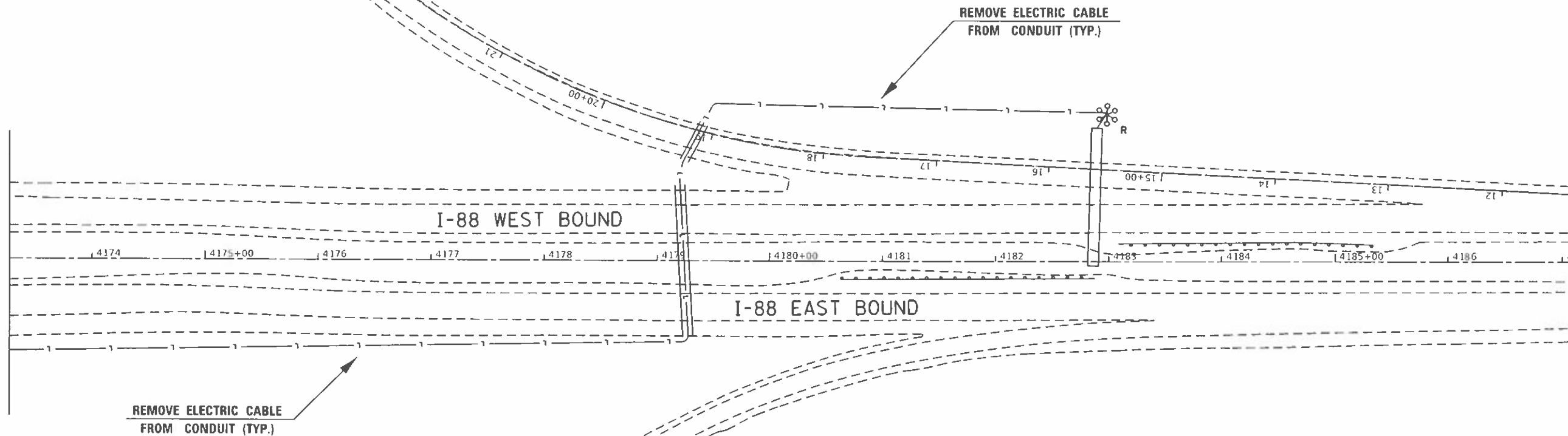




MATCH LINE  
STA. 25+00  
SHEET 14A

MATCH LINE STA. 4173+30  
SHEET 8B

MATCH LINE D  
SHEET 14B



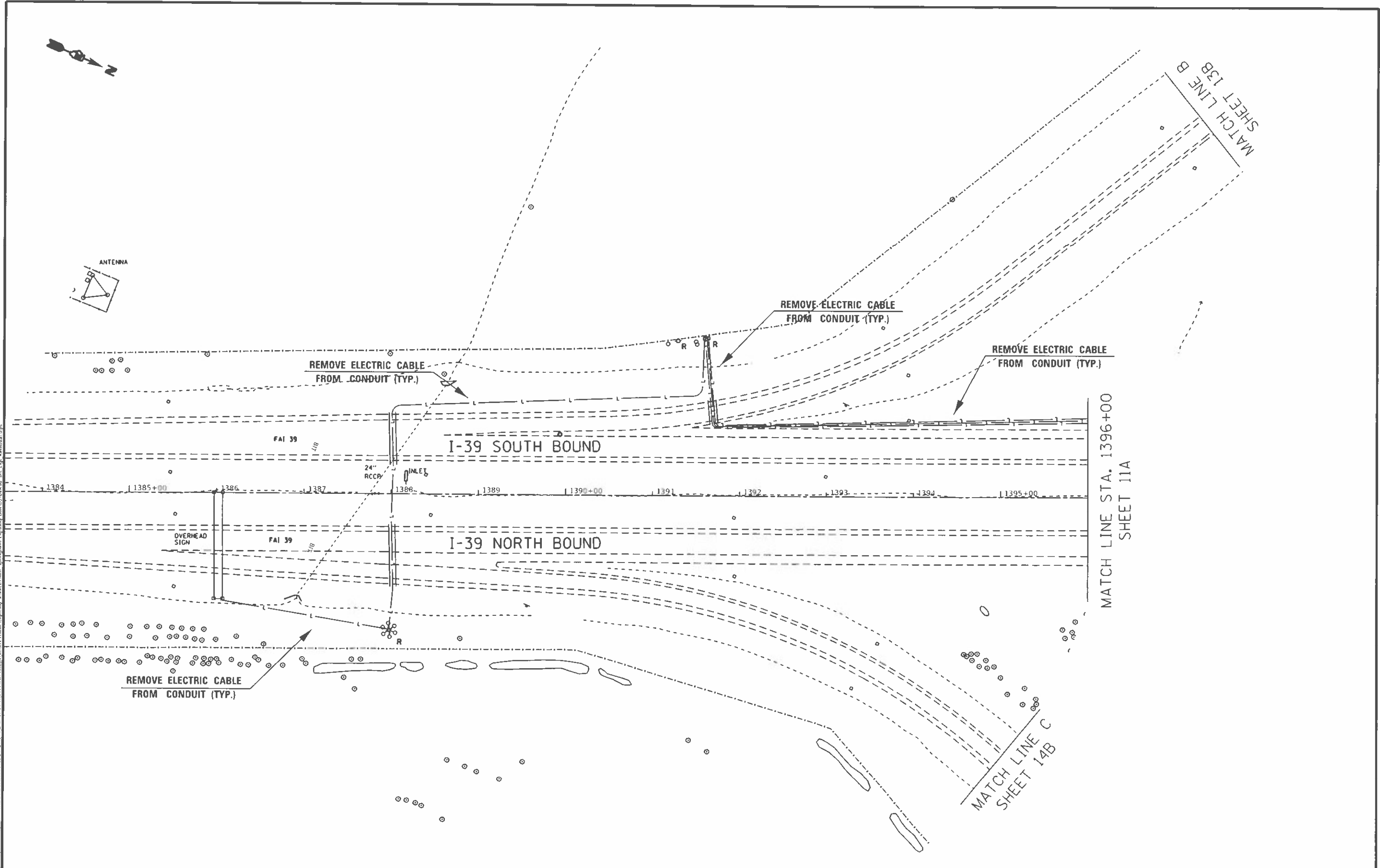
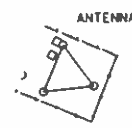
MODEL: D:\civ\p\...  
 FILE NAME: ...  
 PROJECT: ...

USER NAME	• Kirstine Hill	DESIGNED	-	REVISED	-
DRAWN	-	CHECKED	-	REVISED	-
DATE	-	DATE	-	REVISED	-

**STATE OF ILLINOIS**  
**DEPARTMENT OF TRANSPORTATION**

**I-88 AT I-39**  
**LIGHTING REMOVAL**

F.A.T. RATE	SECTION	COUNTY	TOTAL SHEETS	SHEET NO.
39	ILU 2023-01	OGLE	22	9
CONTRACT NO. 64R56				
ILLINOIS FED. AID PROJECT				



MATCH LINE STA. 1396+00  
SHEET 11A

MATCH LINE C  
SHEET 14B

MATCH LINE B  
SHEET 13B

MODEL: D:\Full...  
 USER: KRISTINA...  
 PLOT DATE: OCT 04 2023 10:55:57 AM

USER NAME = KRISTINA INE	DESIGNED =	REVISED =
PLOT SCALE = 1/8" = 100'	DRAWN =	REVISED =
PLOT DATE = OCT 04 2023 10:55:57 AM	CHECKED =	REVISED =
	DATE =	REVISED =

**STATE OF ILLINOIS**  
**DEPARTMENT OF TRANSPORTATION**

**I-88 AT I-39**  
**LIGHTING REMOVAL**

F A I	SECTION	COUNTY	TOTAL	SHEET
RTE			SHEETS	NO.
39	ILU 2023-1	OGLE	22	10
			CONTRACT NO. 64R56	
ILLINOIS FED. AID PROJECT				

SCALE: SHEET OF SHEETS STA TO STA



MATCH LINE STA. 1396+00  
SHEET 10

REMOVE ELECTRIC CABLE  
FROM CONDUIT (TYP.)

REMOVE ELECTRIC CABLE  
FROM CONDUIT (TYP.)

REMOVE ELECTRIC CABLE  
FROM CONDUIT (TYP.)

I-39 SOUTH BOUND

I-39 NORTH BOUND

MATCH LINE STA. 1407+10  
SHEET 8B

REMOVE ELECTRIC CABLE  
FROM CONDUIT (TYP.)

11A

MATCH LINE STA. 1410+80  
SHEET 8B

REMOVE ELECTRIC CABLE  
FROM CONDUIT (TYP.)

I-39 SOUTH BOUND

I-39 NORTH BOUND

MATCH LINE STA. 1421+00  
SHEET 12

REMOVE ELECTRIC CABLE  
FROM CONDUIT (TYP.)

TOWER AND FOUNDATION  
REMOVED IN PREVIOUS CONTRACT

EXISTING UNIT DUCT  
TO REMAIN



11B

USER NAME = Kingpin 001	DESIGNED	REVISED
PLOT SCALE = 104.2513' / in	DRAWN	REVISED
PLOT DATE = Oct 05 2023 07:25:54 AM	CHECKED	REVISED
	DATE	REVISED

STATE OF ILLINOIS  
DEPARTMENT OF TRANSPORTATION

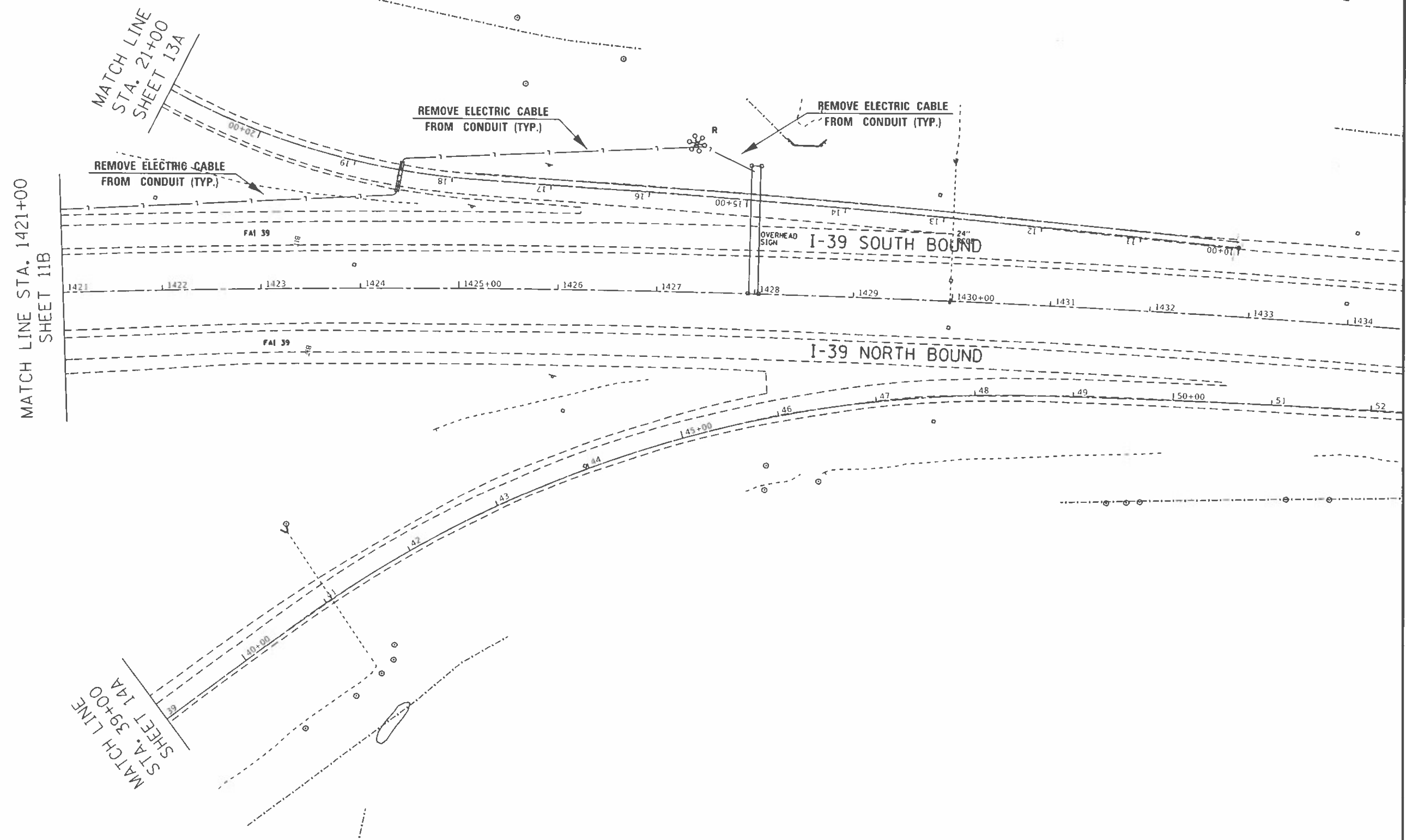
I-88 AT I-39  
LIGHTING REMOVAL

F A I R T E 39	SECTION ILU 2023-1	COUNTY OGLE	TOTAL SHEETS 22	SHEET NO. 11
CONTRACT NO. 64R56				

SCALE SHEET OF SHEETS STA. TO STA.

ILLINOIS FED. AID PROJECT

MODEL: D:\mudt\...  
PLOT DATE: 10/05/2023 07:25:54 AM



MODEL D:\p\aut\...  
 PLOT SCALE = 105.9878' / 1"

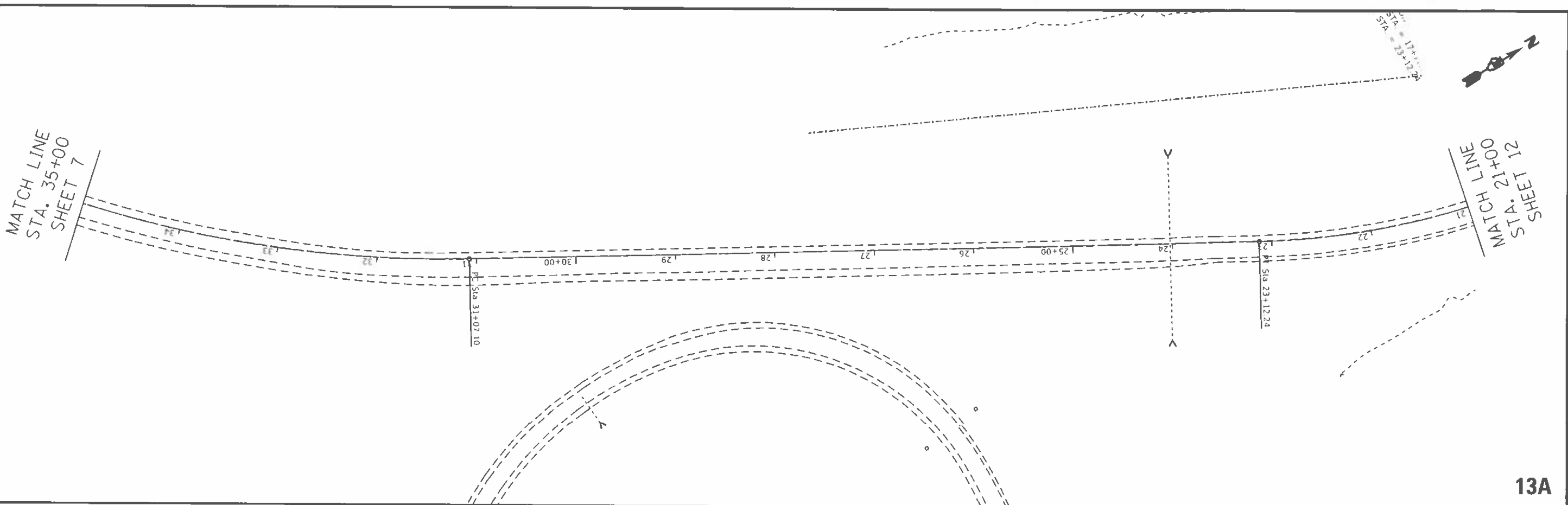
DESIGNED -	REVISIONS -
DRAWN -	REVISIONS -
CHECKED -	REVISIONS -
DATE -	REVISIONS -

**STATE OF ILLINOIS**  
**DEPARTMENT OF TRANSPORTATION**

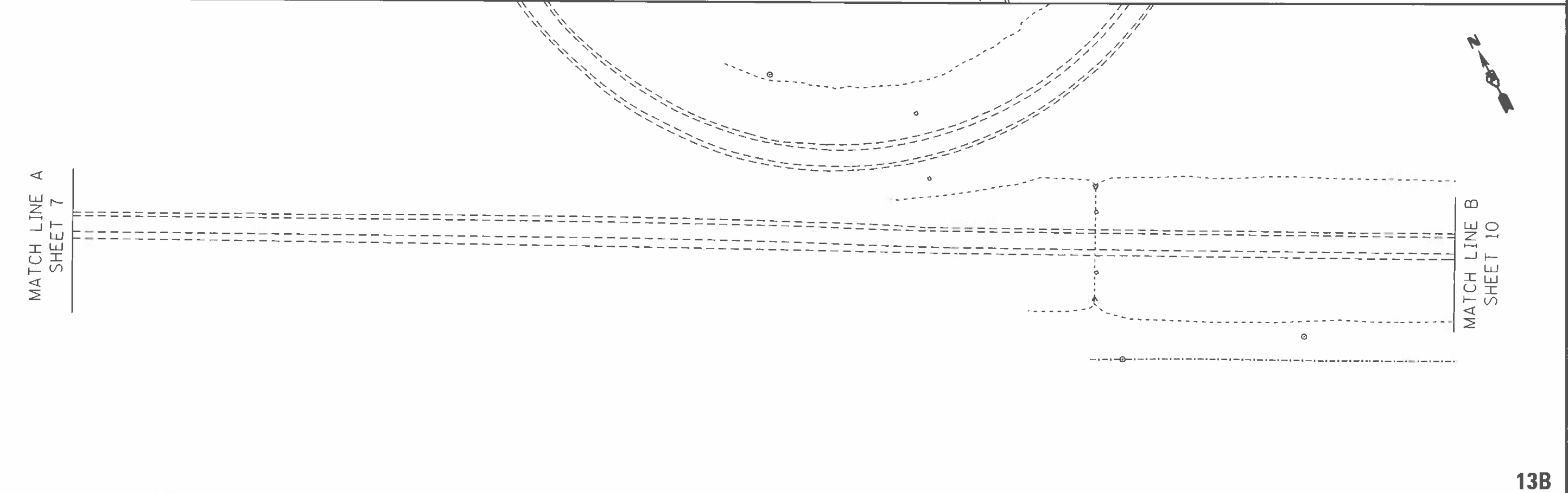
<b>I-88 AT I-39</b> <b>LIGHTING REMOVAL</b>	
SCALE	SHEET OF SHEETS
STA	TO STA

F A I	SECTION	COUNTY	TOTAL SHEETS	SHEET NO.
39	ILU 2023-1	OGLE	22	12
CONTRACT NO 64R56			ILLINOIS FED AID PROJECT	

MODEL: D:\PAUT...  
 FILE NAME: ...  
 PLOT DATE: ...



13A



13B

USER NAME = kshrine	DESIGNED	REVISED
PLOT SCALE = 1/4" = 100'	DRAWN	REVISED
PLOT DATE = Oct-05-2023 07:27:46 AM	CHECKED	REVISED
	DATE	REVISED

**STATE OF ILLINOIS  
 DEPARTMENT OF TRANSPORTATION**

**I-88 AT I-39  
 LIGHTING REMOVAL**

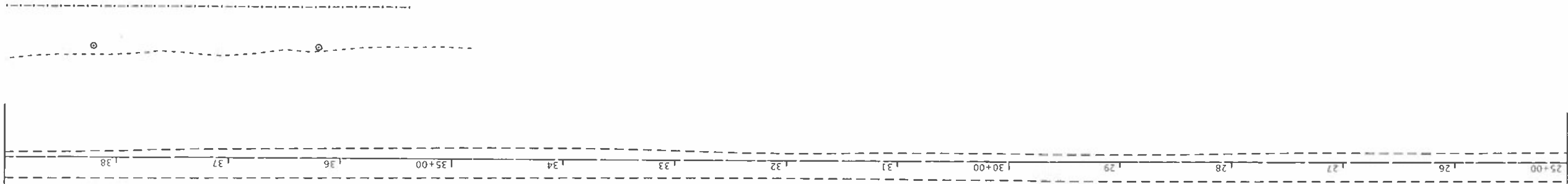
SCALE: SHEET OF SHEETS STA TO STA

F A I RATE	SECTION	COUNTY	TOTAL SHEETS	SHEET NO.
39	ILU 2023-1	OGLE	22	13
CONTRACT NO. 64R56			ILLINOIS FED AID PROJECT	



MATCH LINE  
STA. 39+00  
SHEET 12

MATCH LINE  
STA. 25+00  
SHEET 9

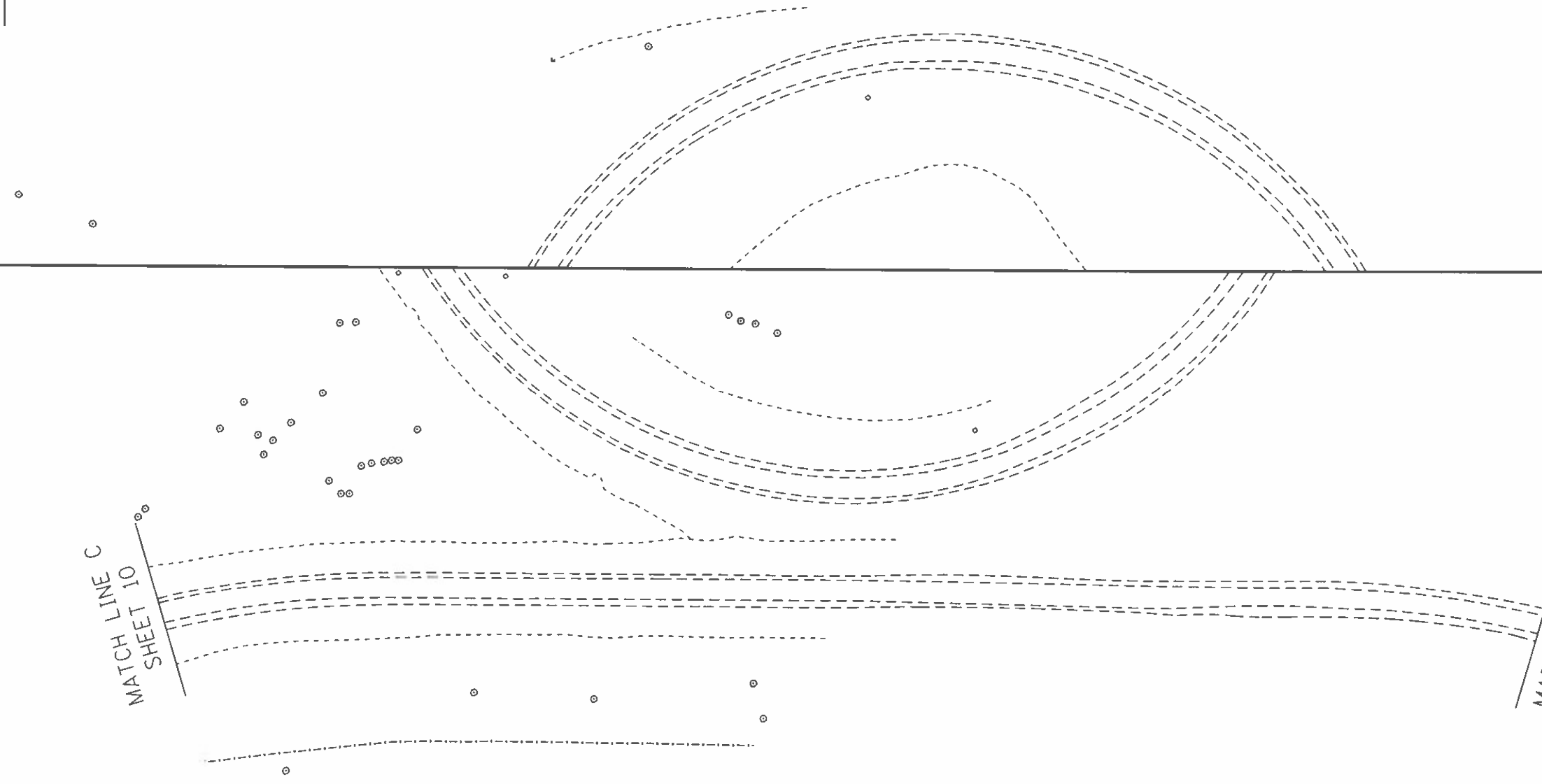


14A



MATCH LINE C  
SHEET 10

MATCH LINE D  
SHEET 9



14B

MODE: Plot  
FILE NAME: \\snp\share\hpc\p1\proj\2023\1-88 AT I-39 Lighting Removal\14B.dwg

USER NAME	DESIGNED	REVISED
PLOT SCALE = 1/8" = 1' 0"	DRAWN	REVISED
PLOT DATE = Oct-04-2023 10:56:37 AM	CHECKED	REVISED
	DATE	REVISED

STATE OF ILLINOIS  
DEPARTMENT OF TRANSPORTATION

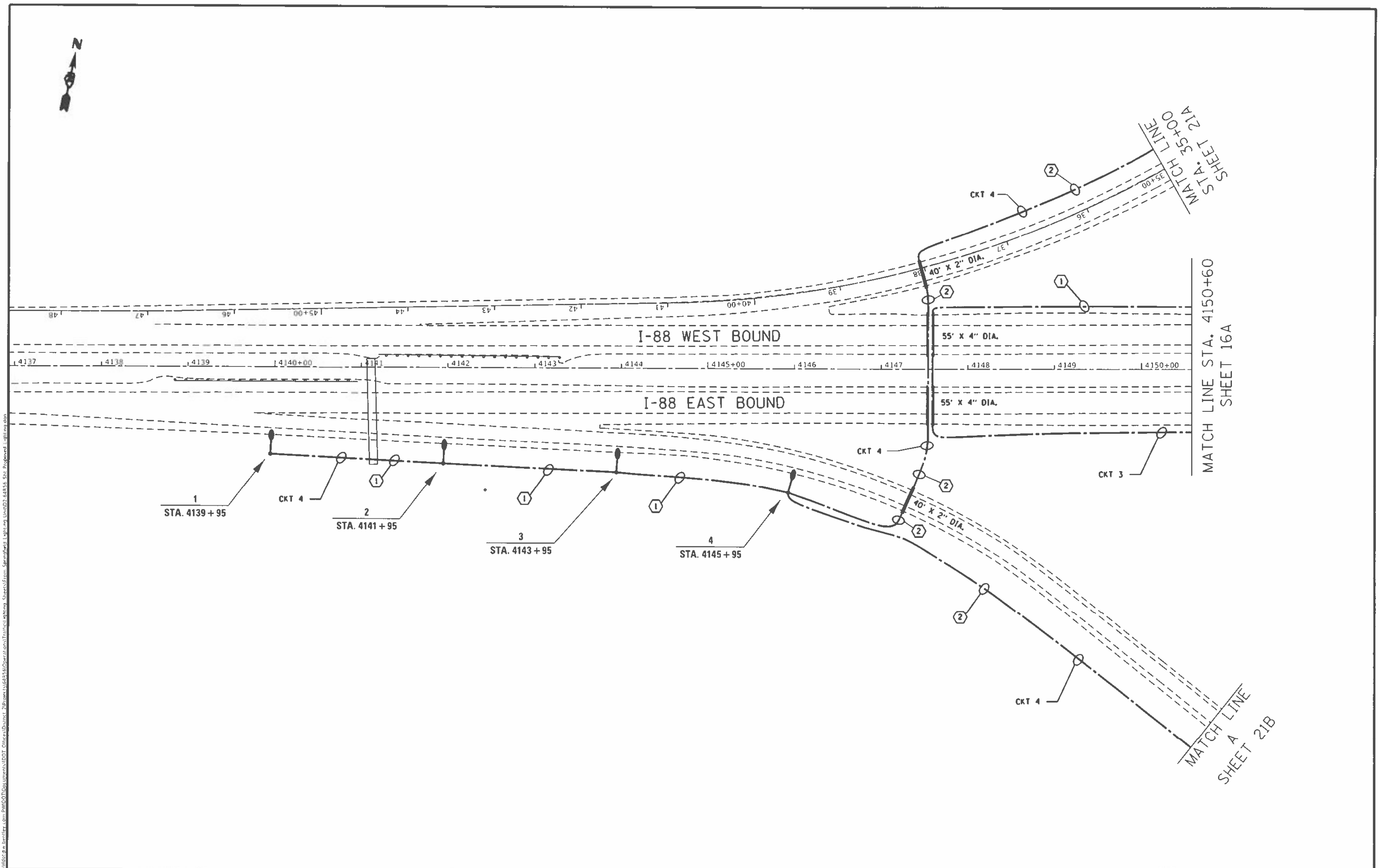
I-88 AT I-39  
LIGHTING REMOVAL

F.A.I. RTE	SECTION	COUNTY	TOTAL SHEETS	SHEET NO.
39	ILU 2023 1	OGLE	22	14
CONTRACT NO. 64R56				
ILLINOIS FED AID PROJECT				

SCALE: SHEET OF SHEETS STA TO STA.



MODEL: Default  
 FILE: I-88 AT I-39 - Lighting - 20231004.dwg  
 USER: kristina.hill  
 PROJECT: I-88 AT I-39 - Lighting - 20231004.dwg  
 SHEET: 15  
 CONTRACT: 64R56  
 DATE: 10/04/2023 02:07:37 PM

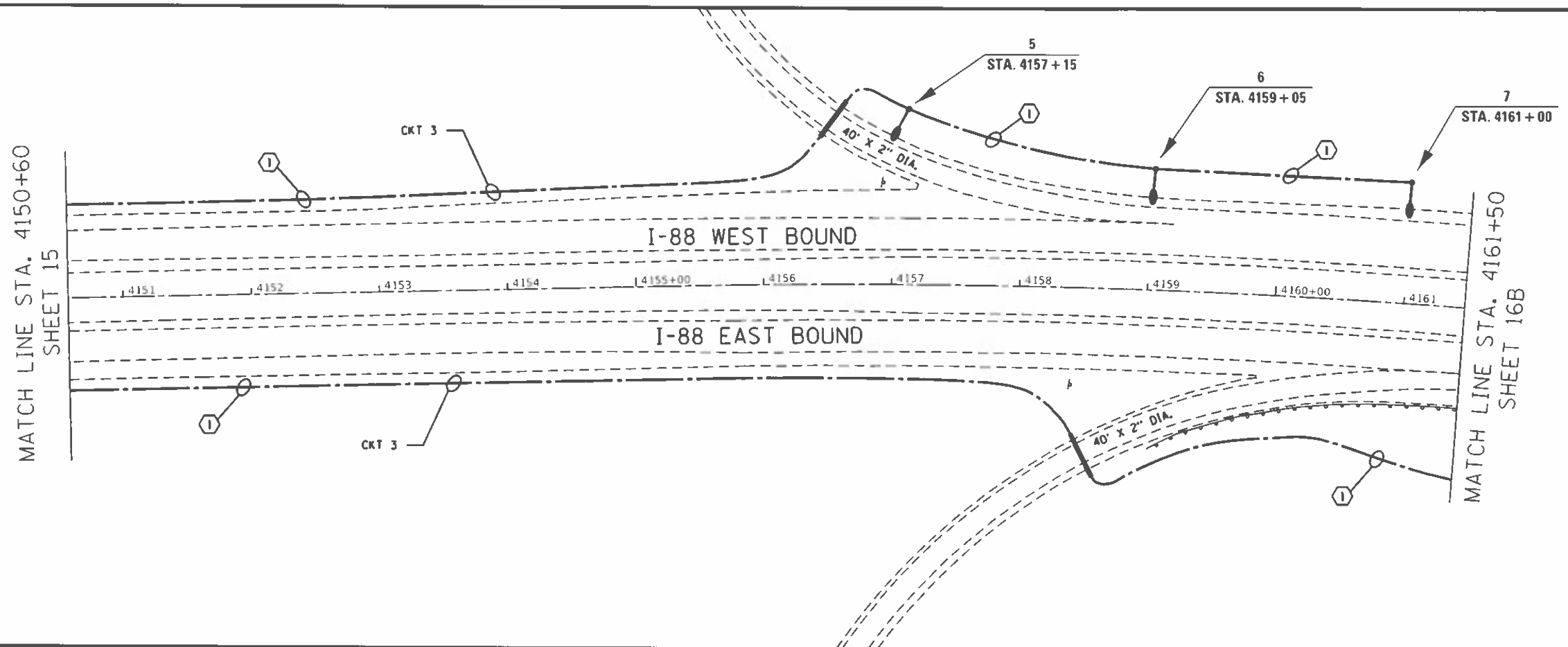


USER NAME = Kristina Hill	DESIGNED -	REVISED -
PLOT SCALE = 1/32" = 1' / in.	DRAWN -	REVISED -
PLOT DATE = Oct-04-2023 02:07:37 PM	CHECKED -	REVISED -
	DATE -	REVISED -

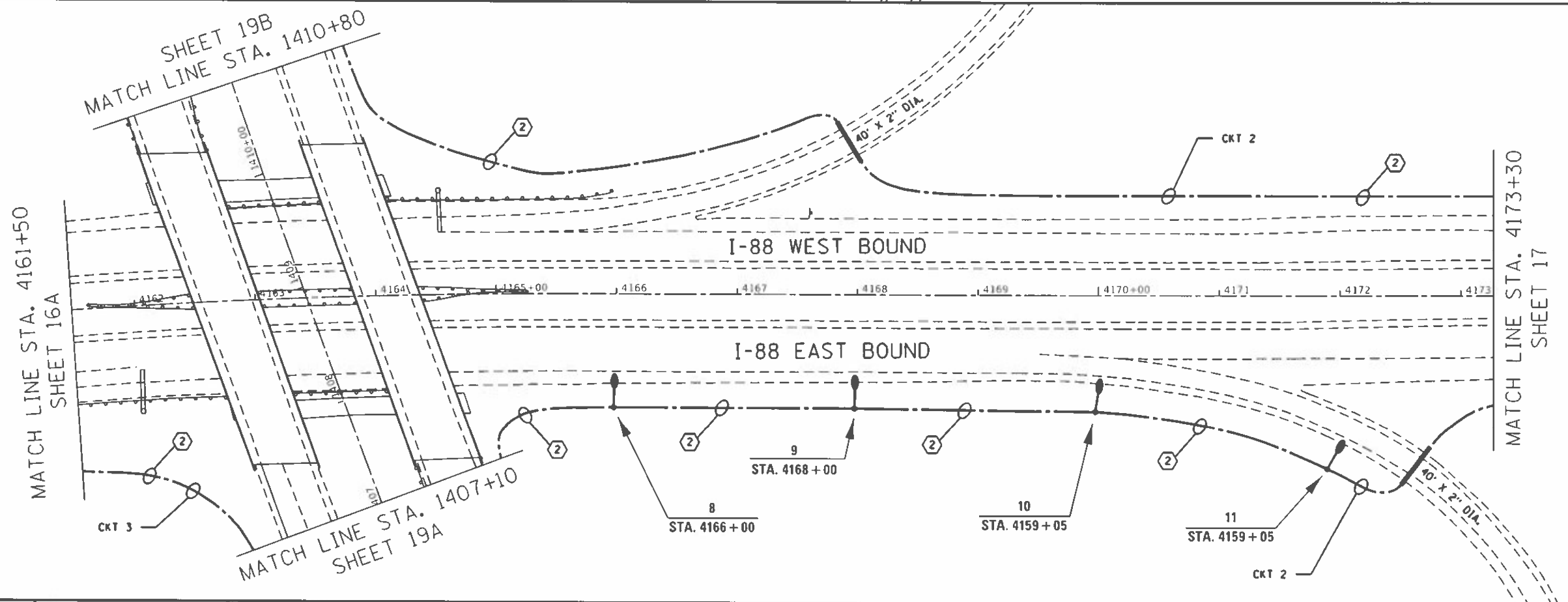
**STATE OF ILLINOIS**  
**DEPARTMENT OF TRANSPORTATION**

I-88 AT I-39 PROPOSED LIGHTING	
SCALE:	SHEET OF SHEETS STA TO STA

F.A.I. RTE	SECTION	COUNTY	TOTAL SHEETS	SHEET NO.
39	(11/2023-1)	OGLE	22	15
CONTRACT NO. 64R56				
ILLINOIS FED. AID PROJECT				



16A



16B

MODEL: Default  
 PLOT SCALE: 1/8" = 1'-0"  
 PLOT DATE: Oct 05 2023 07:30:45 AM  
 User: ksl  
 Title: I-88 AI-39 Proposed Lighting  
 Project: I-88 AI-39 Proposed Lighting  
 Sheet: I-88 AI-39 Proposed Lighting - Sheet 16A  
 Path: \\server\projects\I-88 AI-39 Proposed Lighting\I-88 AI-39 Proposed Lighting - Sheet 16A.dwg

USER NAME = ksl	DESIGNED =	REVISED =
PLOT SCALE = 1/8" = 1'-0"	DRAWN =	REVISED =
PLOT DATE = Oct 05 2023 07:30:45 AM	CHECKED =	REVISED =
	DATE =	REVISED =

**STATE OF ILLINOIS**  
**DEPARTMENT OF TRANSPORTATION**

**I-88 AI-39**  
**PROPOSED LIGHTING**

SCALE: \_\_\_\_\_ SHEET \_\_\_\_\_ OF \_\_\_\_\_ SHEETS STA. \_\_\_\_\_ TO STA. \_\_\_\_\_

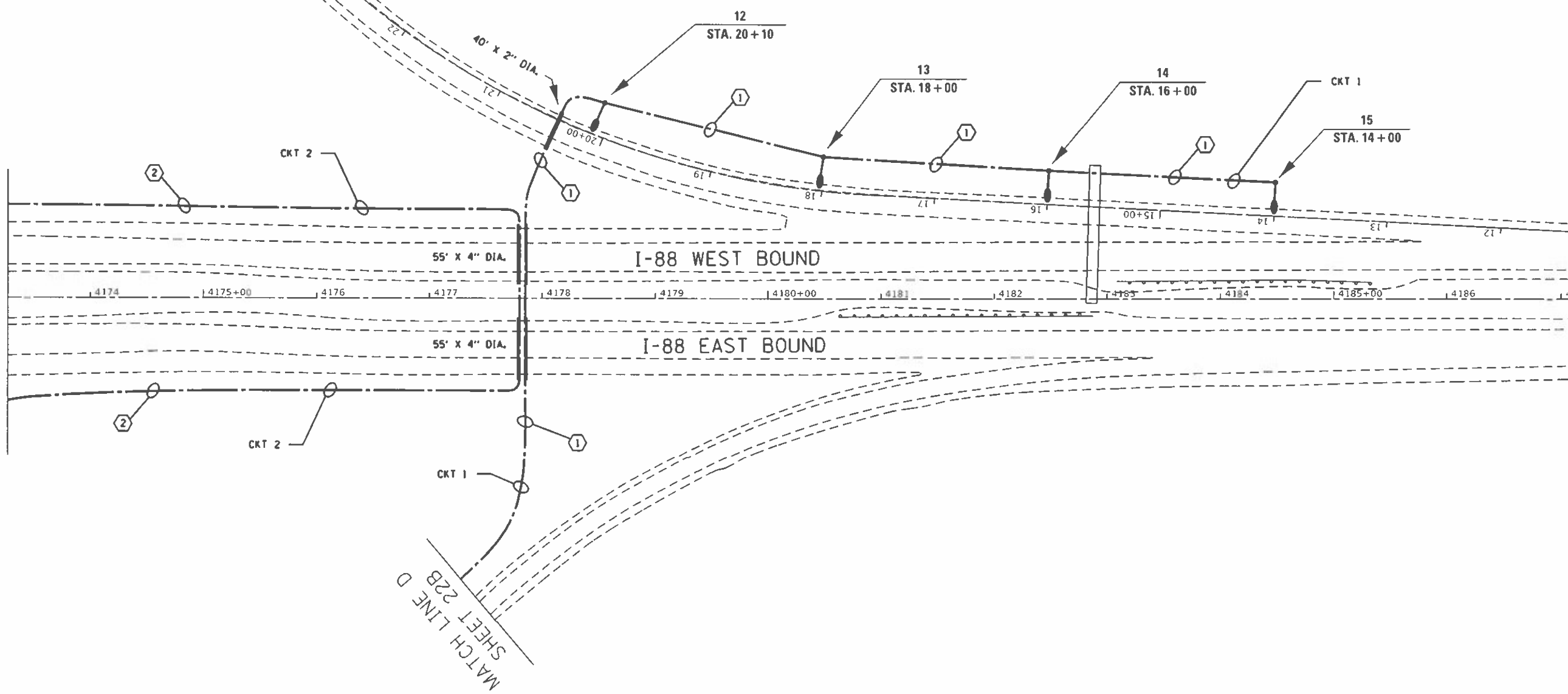
F.A.I. RTE. 39	SECTION ILU 2023-1	COUNTY OGLE	TOTAL SHEETS 22	SHEET NO. 16
ILLINOIS FED. AID PROJECT			CONTRACT NO. 64R56	





MATCH LINE  
STA. 25+00  
SHEET 22A

MATCH LINE STA. 4173+30  
SHEET 16B



MODEL: Default  
 FILE NAME: s:\p1\10\10\64856\1001\_01\I-88 AT I-39\I-88 AT I-39\Operations\Traffic Lighting\_Sheets\1001\_01\I-88 AT I-39\Operations\Traffic Lighting\_Sheets.dwg  
 PLOT DATE: 10/04/2023 02:24:04 PM

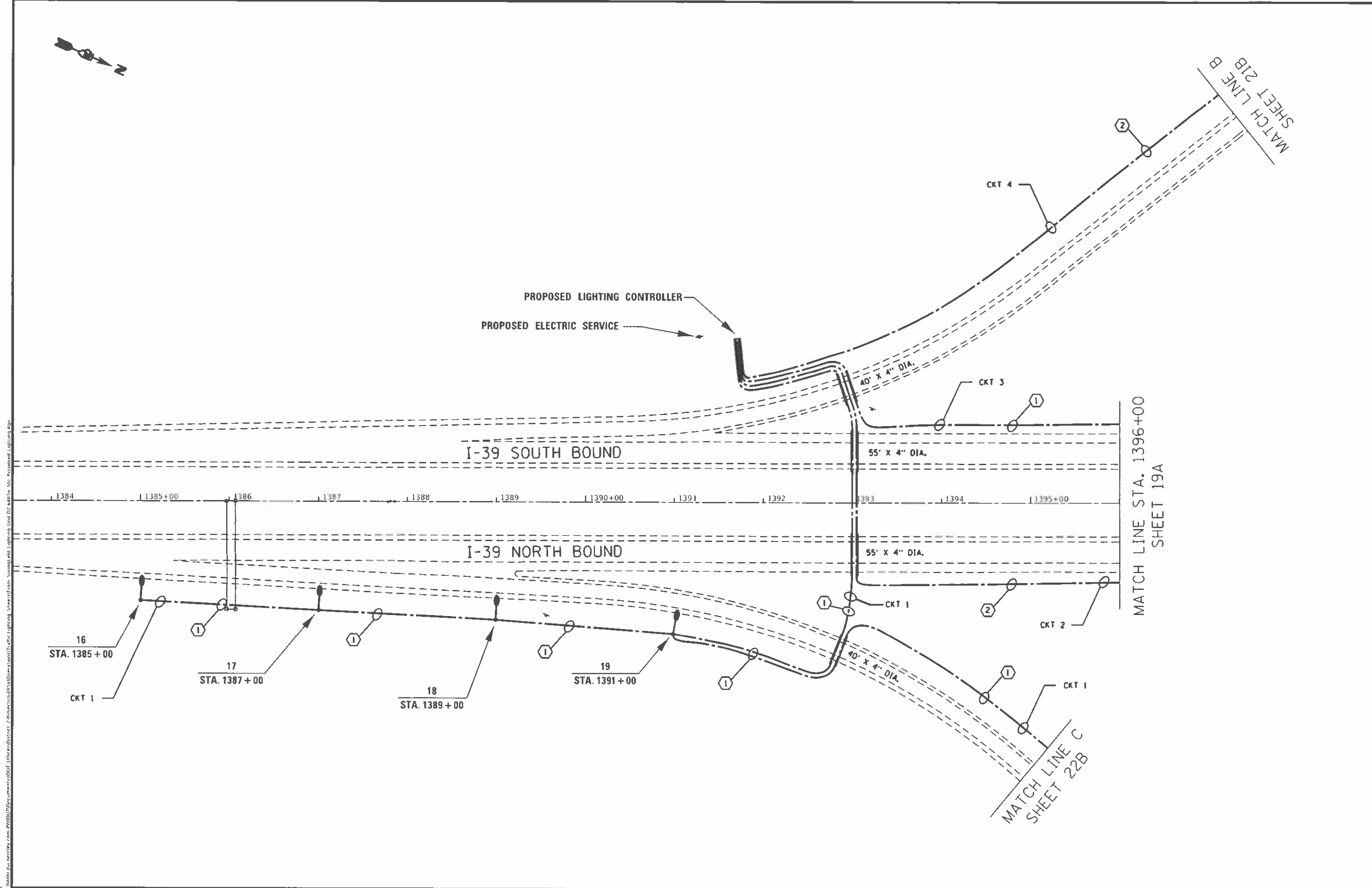
USER NAME = Kristine Hill	DESIGNED =	REVISED =
PLOT SCALE = 1/32" = 1' / 32"	DRAWN =	REVISED =
PLOT DATE = 10/04/2023 02:24:04 PM	CHECKED =	REVISED =
	DATE =	REVISED =

**STATE OF ILLINOIS**  
**DEPARTMENT OF TRANSPORTATION**

**I-88 AT I-39**  
**PROPOSED LIGHTING**

SCALE: SHEET OF SHEETS STA. TO STA.

F.A. RTE 39	SECTION I-88 AT I-39	COUNTY OGLE	TOTAL SHEETS 22	SHEET NO. 17
CONTRACT NO. 64856			ILLINOIS FED. AID PROJECT	



H:\011 - Output  
 FILE NAME: \\w:\adms\p\benefitay.com\PROJECTS\BNSF\Documents\DOT Office\District 7\Projects\BNSF\Operations\Traffic\Lighting\39m\pld Lighting Unit 07.dwg  
 PROJECT: BNSF Operations\Traffic\Lighting\39m\pld Lighting Unit 07.dwg

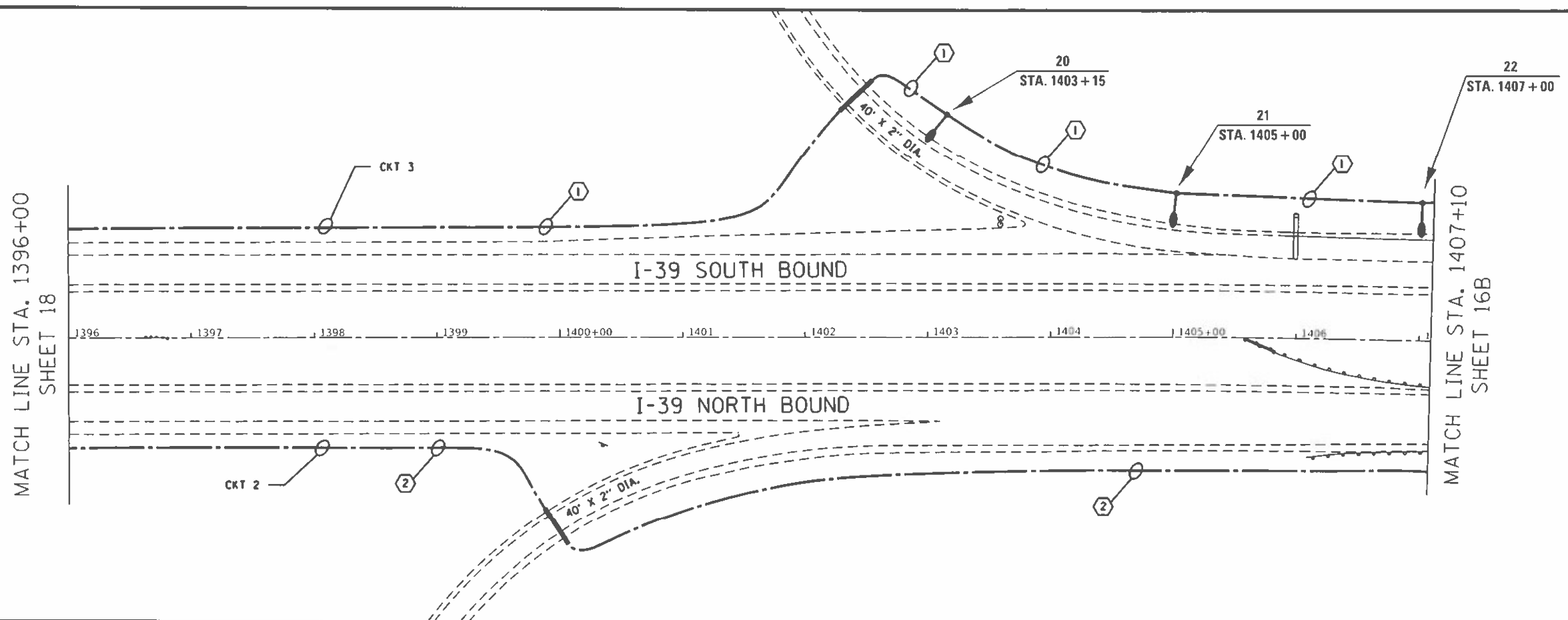
USER NAME = K10101010	DESIGNED -	REVISED -
PLOT SCALE = 104.2760' / in.	DRAWN -	REVISED -
PLOT DATE = Oct 04 2023 02:08:16 PM	CHECKED -	REVISED -
	DATE -	REVISED -

**STATE OF ILLINOIS**  
**DEPARTMENT OF TRANSPORTATION**

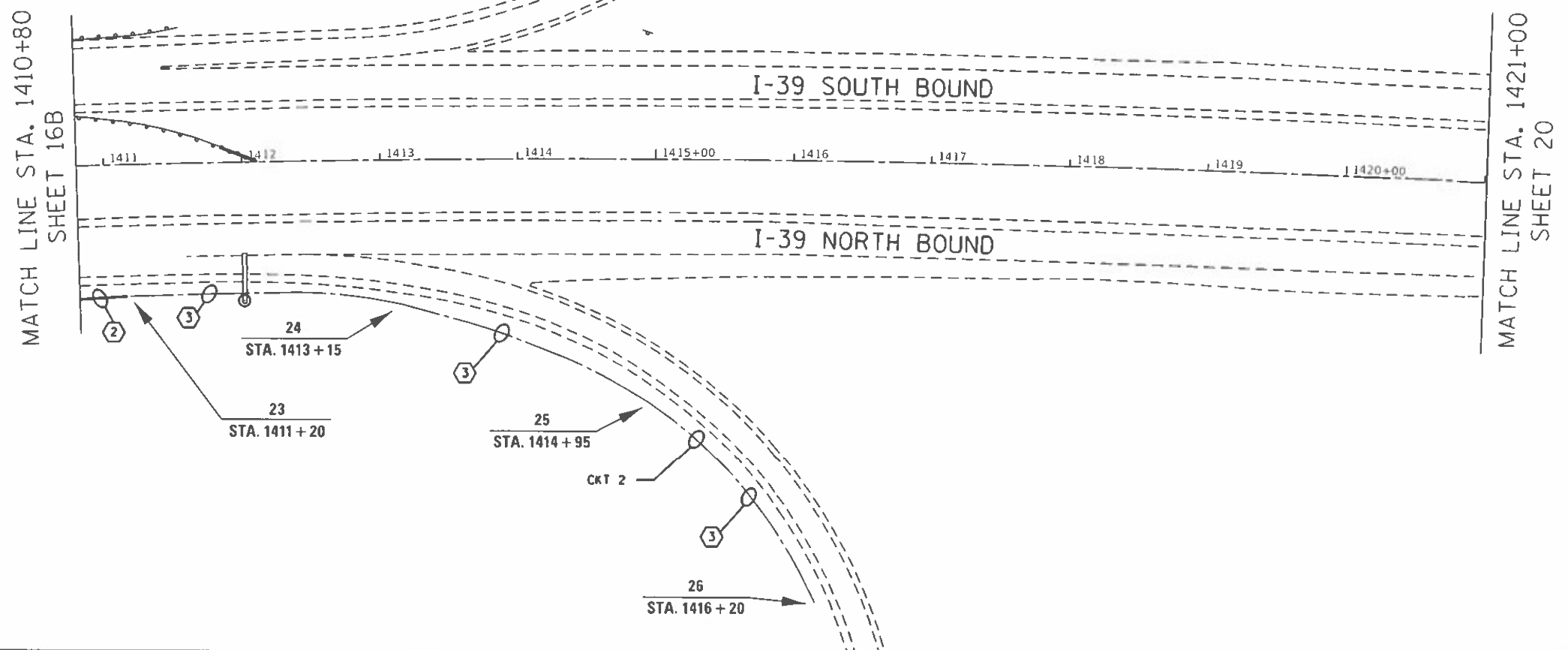
**I-88 AT I-39**  
**PROPOSED LIGHTING**

SCALE:      SHEET    OF    SHEETS    STA.      TO STA.

DATE	SECTION	COUNTY	TOTAL SHEETS	SHEET NO.
39	ILU 2023-1	OGLE	22	18
CONTRACT NO. 64R56			ILLINOIS FED. AID PROJECT	



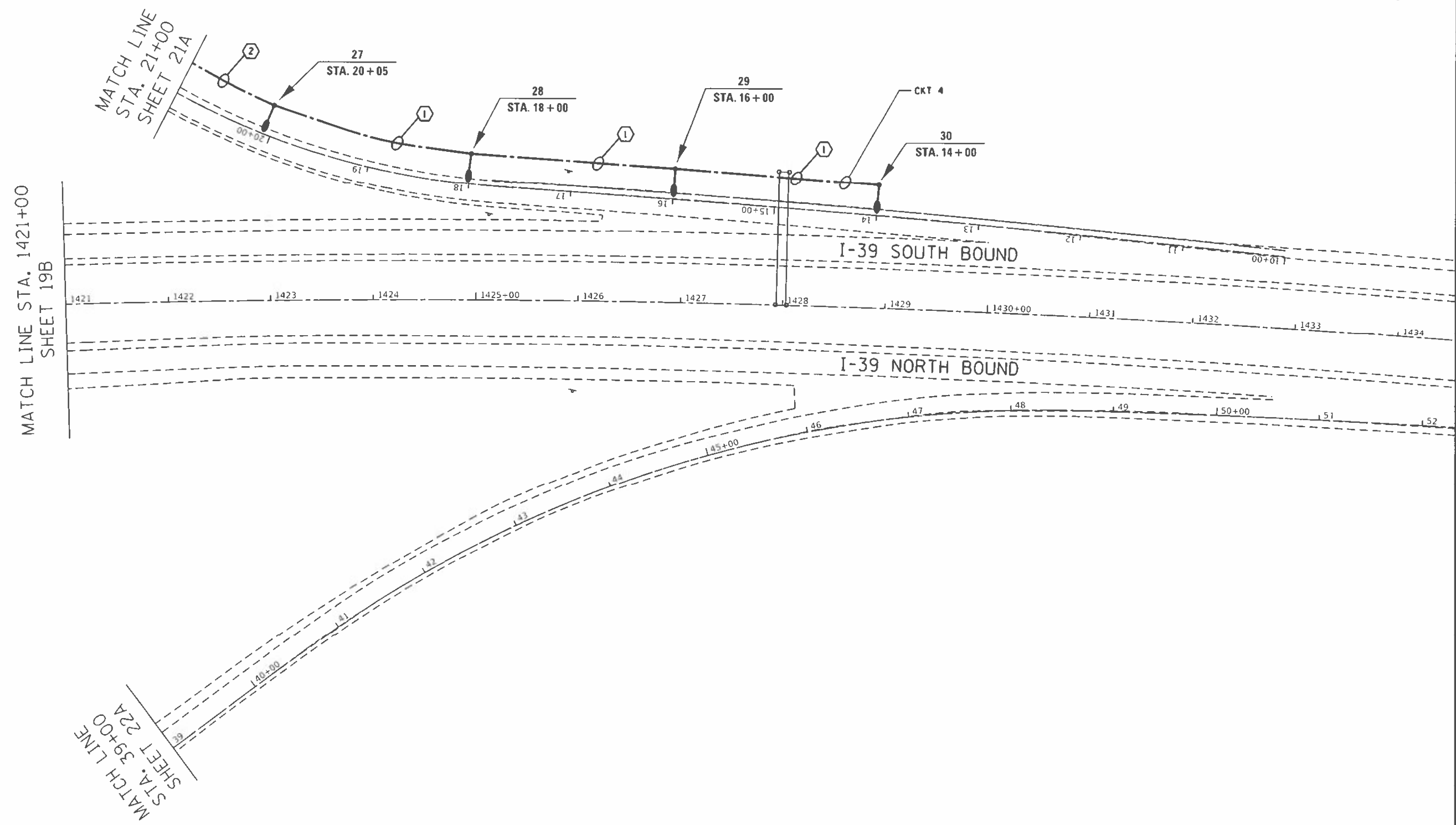
19A



19B

MODEL: D:\11111111\11111111.dwg; PLOT DATE: 01/04/2023 02:08:25 PM; USER: j...; PROJECT: I-88 AT I-39 PROPOSED LIGHTING; SHEET: 19A; CONTRACT NO. 64R56

USER NAME - KRISTINE TH... DESIGNED - DRAWN - CHECKED - DATE -		REVISED - REVISED - REVISED - REVISED -		<b>STATE OF ILLINOIS DEPARTMENT OF TRANSPORTATION</b>		<b>I-88 AT I-39 PROPOSED LIGHTING</b>		P.A. I... RITE... 39		SECTION ILU 2023-1		COUNTY OGLE		TOTAL SHEETS 22		SHEET NO. 19	
SCALE:      SHEET      OF      SHEETS      STA.      TO      STA.				CONTRACT NO. 64R56 ILLINOIS FED. AID PROJECT													



MODEL: D:\bent...  
 FILE: ...  
 USER: ...  
 DATE: ...

USER NAME	DESIGNED	REVISED
PLOT SCALE	DRAWN	REVISED
PLOT DATE	CHECKED	REVISED
	DATE	REVISED

**STATE OF ILLINOIS**  
**DEPARTMENT OF TRANSPORTATION**

**I-88 AT I-39**  
**PROPOSED LIGHTING**

F.A.I. RTE	SECTION	COUNTY	TOTAL SHEETS	SHEET NO
39	ILU 2023-1	OGLE	22	20
CONTRACT NO. 64R56				

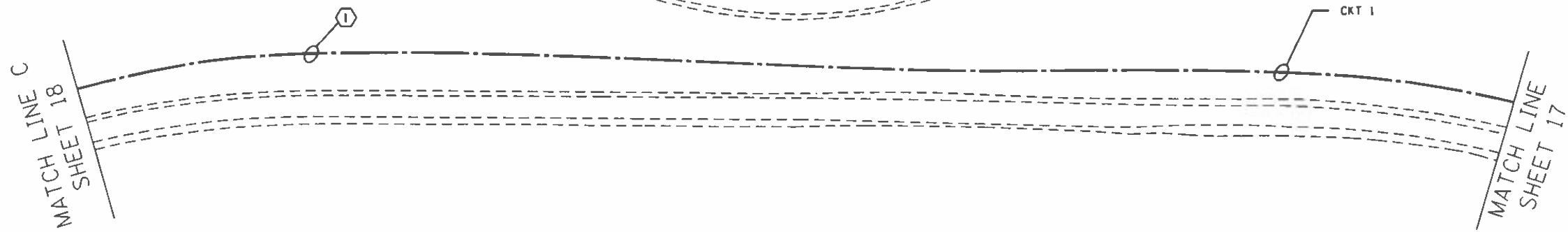
SCALE: SHEET OF SHEETS STA. TO STA. ILLINOIS FED. AID PROJECT



MATCH LINE  
STA. 39+00  
SHEET 20

MATCH LINE  
STA. 25+00  
SHEET 17

22A



22B

MODEL: DwgPlot FILE NAME: I:\Projects\64R56\Drawings\Lighting\Lighting.dwg USER: d4856 STA: Proposed Lighting.dwg

USER NAME = KripshamW	DESIGNED =	REVISED =
PLOT SCALE = 101.7272 ft/in	DRAWN =	REVISED =
PLOT DATE = Oct-05-2023 07:35:03 AM	CHECKED =	REVISED =
	DATE =	REVISED =

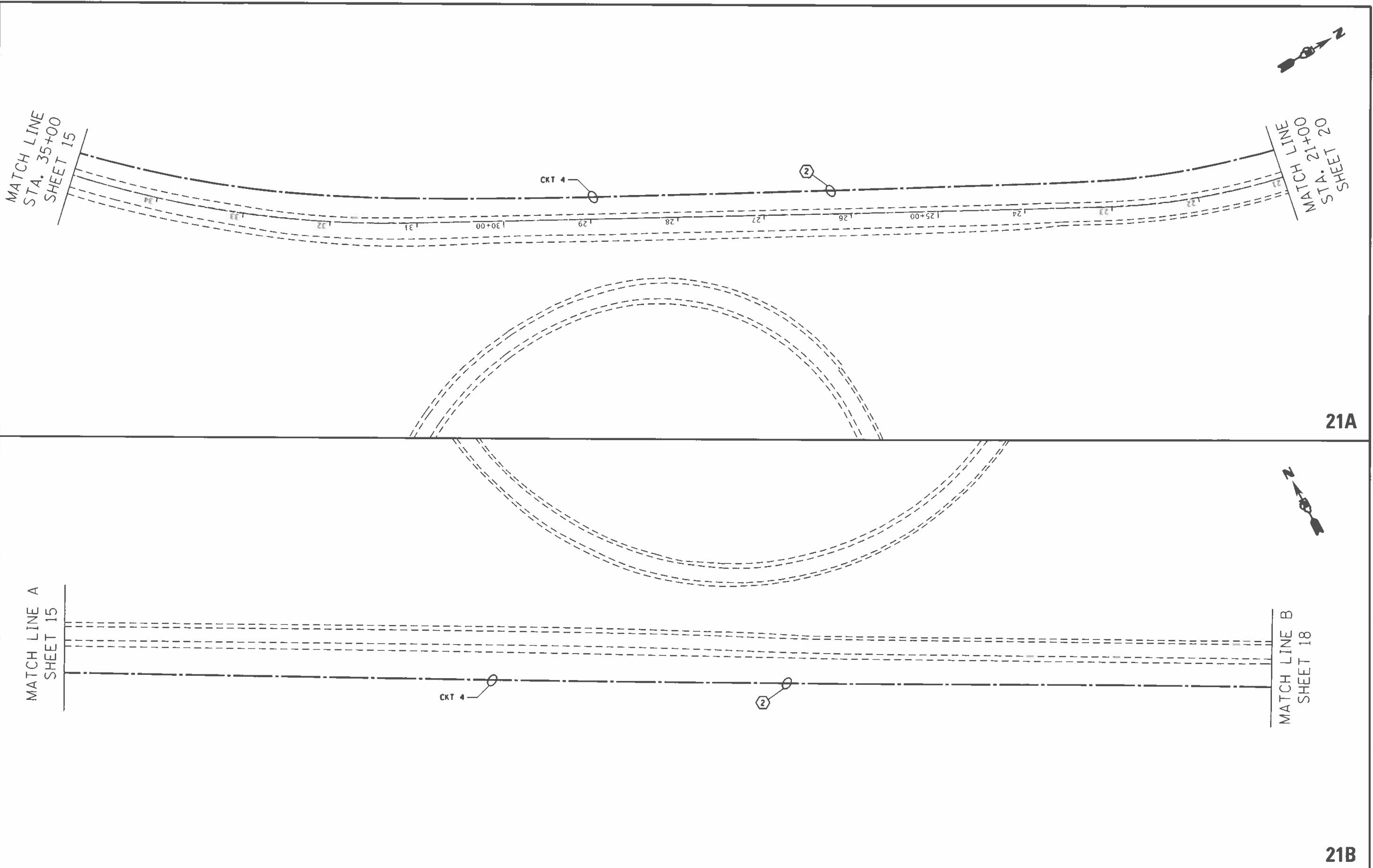
**STATE OF ILLINOIS  
DEPARTMENT OF TRANSPORTATION**

**I-88 AT I-39  
PROPOSED LIGHTING**

SCALE: SHEET OF SHEETS STA TO STA

F.A.T. RATE	SECTION	COUNTY	TOTAL SHEETS	SHEET NO.
39	ILU 2023-1	OGLE	22	22
CONTRACT NO. 64R56				
ILLINOIS FED. AID PROJECT				

MODEL: D:\mll\...  
 FILE NAME: ...



21A

21B

USER NAME = KJF-HE-PIB	DESIGNED -	REVISED -
DRAWN -	REVISED -	
PLOT SCALE = 104.2740 * 1 m	CHECKED -	REVISED -
PLOT DATE = Oct 01 2023 02:08:43 PM	DATE -	REVISED -

**STATE OF ILLINOIS  
 DEPARTMENT OF TRANSPORTATION**

**I-88 AT I-39  
 PROPOSED LIGHTING**

SCALE: SHEET OF SHEETS STA. TO STA.

P.A. I. RTE	SECTION	COUNTY	TOTAL SHEETS	SHEET NO.
39	ILU 2023-1	OGLE	22	21
CONTRACT NO. 64R56				
ILLINOIS FIELD ART PROJECT				



MATCH LINE  
STA. 39+00  
SHEET 20

MATCH LINE  
STA. 25+00  
SHEET 17

25+00 1.26 1.27 1.28 1.29 1.30+00 1.31 1.32 1.33 1.34 1.35+00 1.36 1.37 1.38

22A



MATCH LINE C  
SHEET 18

MATCH LINE  
SHEET 17

CKT 1

22B

MOSES, C:\Users\Public\Desktop\DOT - Office\Drawings - I-88\I-88\Operations\I-88\I-88-22A.dwg  
 FILE NAME: C:\Users\Public\Desktop\DOT - Office\Drawings - I-88\I-88\Operations\I-88\I-88-22A.dwg

USER NAME = Kristine Hill	DESIGNED -	REVISED -
PLOT SCALE = 1:31.2272 / 1 in	DRAWN -	REVISED -
PLOT DATE = Oct 05 2023 09:19:53 AM	CHECKED -	REVISED -
	DATE -	REVISED -

**STATE OF ILLINOIS**  
**DEPARTMENT OF TRANSPORTATION**

<b>I-88 AT I-39</b> <b>PROPOSED LIGHTING</b>	
SCALE: _____	SHEET _____ OF _____ SHEETS STA. _____ TO STA. _____

F.A.I. RTE	SECTION	COUNTY	TOTAL SHEETS	SHEET NO.
39	ILU 2023-1	OGLE	22	22
CONTRACT NO. 64R56			ILLINOIS FCO AID PROJECT	