

INDEX OF SHEETS

- 1 COVER SHEET
- 2 GENERAL NOTES
- 3-7 SUMMARY OF QUANTITIES
- 8 LINE DIAGRAM
- 9-10 TYPICAL SECTIONS
- 11 PERMANENT SURVEY TABLE
- 12-14 SCHEDULES
- 15-16 CULVERT # 1532 DETAILS
- 17-23 DETAILS

LIST OF ILLINOIS DOT HIGHWAY STANDARDS

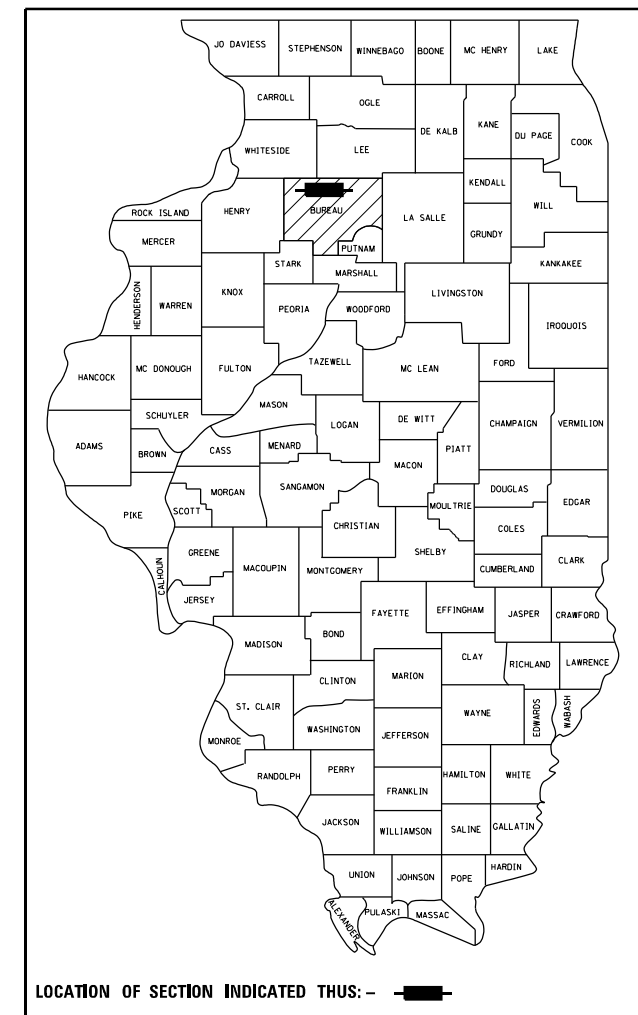
- 000001-08 STANDARD SYMBOLS, ABBREVIATIONS AND PATTERNS
- 001001-02 AREAS OF REINFORCEMENT BARS
- 001006 DECIMAL OF AN INCH AND OF A FOOT
- 406201-01 MAILBOX TURNOUT
- 601101-02 CONCRETE HEADWALL FOR PIPE UNDERDRAINS
- 630001-13 STEEL PLATE BEAM GUARDRAIL
- 630106-02 LONG-SPAN GUARDRAIL OVER CULVERT
- 635001-02 DELINEATORS
- 667101-02 PERMANENT SURVEY MARKERS
- 701201-05 LANE CLOSURE, 2L, 2W, DAY ONLY, FOR SPEEDS ≥ 45 MPH
- 701301-04 LANE CLOSURE, 2L, 2W, SHORT TIME OPERATIONS
- 701306-04 LANE CLOSURE, 2L, 2W, SLOW MOVING OPERATIONS DAY ONLY, FOR SPEEDS ≥ 45 MPH
- 701311-03 LANE CLOSURE, 2L, 2W, MOVING OPERATIONS - DAY ONLY
- 701901-09 TRAFFIC CONTROL DEVICES
- 780001-05 TYPICAL PAVEMENT MARKINGS
- 781001-04 TYPICAL APPLICATIONS RAISED REFLECTIVE PAVEMENT MARKERS

STATE OF ILLINOIS
DEPARTMENT OF TRANSPORTATION
DIVISION OF HIGHWAYS
PROPOSED
HIGHWAY PLANS

FAP ROUTE 587 (IL 92)
SECTION 135 RS-5 & 137 RS-4
PROJECT STP-G062(260)
3P MILLING AND RESURFACING
BUREAU COUNTY

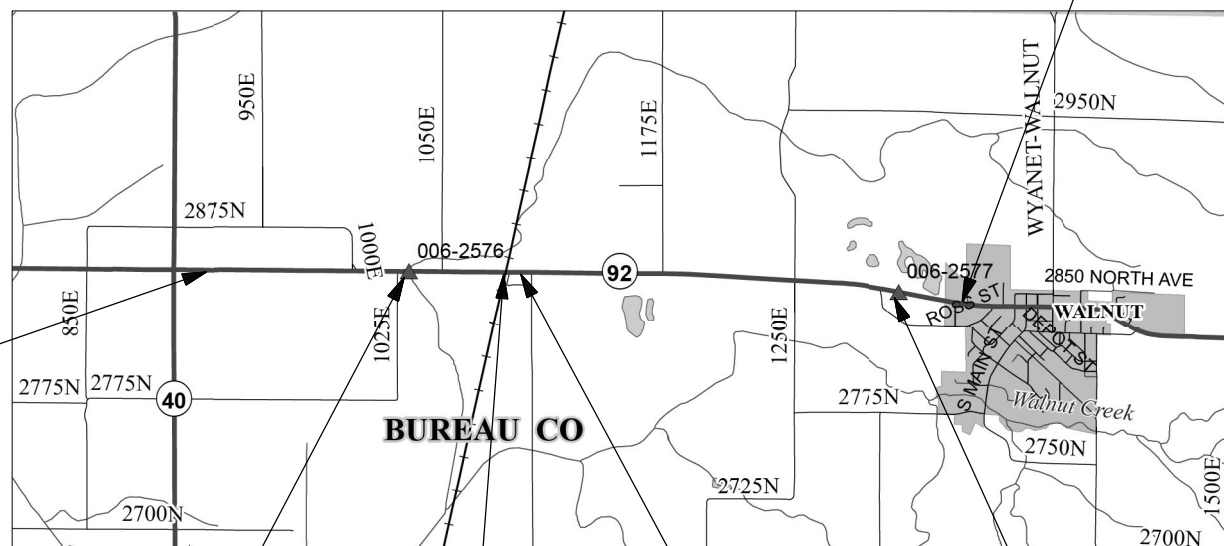
F.A.P. RTE.	SECTION	COUNTY	TOTAL SHEETS	SHEET NO.
587	135 RS-5 & 137 RS-4	BUREAU	23	1
		ILLINOIS	CONTRACT NO. 66967	

D-93-053-09

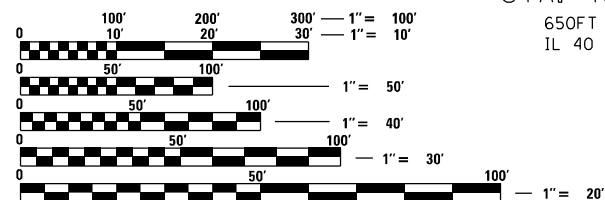


C-93-115-09

PROJECT ENDS
 STA. 697+27
 HMA JOINT WEST
 END OF WALNUT



PROJECT BEGINS
 STA. 467+62
 650FT EAST OF
 IL 40 INTERSECTION



FULL SIZE PLANS HAVE BEEN PREPARED USING STANDARD ENGINEERING SCALES, REDUCED SIZED PLANS WILL NOT CONFORM TO STANDARD SCALES. IN MAKING MEASUREMENTS ON REDUCED PLANS, THE ABOVE SCALES MAY BE USED.

J.U.L.I.E.
 JOINT UTILITY LOCATION INFORMATION FOR EXCAVATION
 1-800-892-0123
 OR 811

PROJECT ENGINEER: JOSEPH KANNEL, P.E.
UNIT CHIEF: MOHAMED YOUSIF
DISTRICT 3 NO. (815) 434-6131
CONTRACT NO. 66967

SN 006-2576
 STA. 532+32

R.R. OMISSION
 STA. 561+41 - STA. 561+50
 STA. 561+92 - STA. 562+01

PCC OMISSION
 STA. 563+67 - STA. 564+40

SN 006-2577
 STA. 681+73

GROSS LENGTH = 22,965 FT = 4.35 MI
 NET LENGTH = 22,874 FT = 4.33 MI



FUNCTIONAL CLASSIFICATION-MINOR
ARTERIAL (RURAL)
 2021 ADT = 1600
 PV = 87.50% SU = 3.75% MU = 8.75%

STATE OF ILLINOIS
 DEPARTMENT OF TRANSPORTATION
 DIVISION OF HIGHWAYS

SUBMITTED October 25, 2023
[Signature]
 DEPUTY DIRECTOR OF HIGHWAYS, REGION ENGINEER

December 8, 2023
[Signature]
 ENGINEER OF DESIGN AND ENVIRONMENT

December 8, 2023
[Signature]
 DIRECTOR OF HIGHWAYS PROJECT IMPLEMENTATION

PRINTED BY THE AUTHORITY
OF THE STATE OF ILLINOIS

GENERAL NOTES

THE HMA SURFACE OF ALL MAILBOX TURNOUTS, PRIVATE ENTRANCES, COMMERCIAL ENTRANCES, AND SIDE ROADS SHALL BE MADE NEATLY, IN A WORKMANLIKE MANNER, AND SHALL ACCURATELY CONFORM TO THE SHAPES AND DIMENSIONS SHOWN ON THE PLAN DETAILS. IF REQUIRED BY THE ENGINEER, THE CONTRACTOR SHALL SAW CUT THE HMA SURFACE TO CONFORM TO THE SHAPES AND DIMENSIONS SHOWN ON THE PLAN DETAILS. THIS WORK WILL BE INCLUDED IN THE COST OF THE HMA SURFACE.

EXCEPT AS NOTED ON THE PLANS, PAVEMENT GRADES SHOWN ARE AT THE TOP OF PAVEMENT SURFACES.

BEFORE ORDERING PIPE CULVERTS OR PIPE DRAINS, THE CONTRACTOR SHALL CONSULT THE ENGINEER FOR EXACT LENGTHS.

THE ENGINEER WILL BE THE SOLE JUDGE CONCERNING CURING TIME FOR THE VARIOUS HMA LIFTS.

THE FINISHED EARTHWORK SHALL HAVE A VEGETATION SUSTAINING SOIL COVERING THE TOP FOUR INCHES IN AREAS TO BE SEEDED OR SODDED. THE VEGETATION SUSTAINING SOIL REQUIRED WILL NOT BE PAID FOR SEPARATELY BUT WILL BE INCLUDED IN THE COST OF FURNISHED EXCAVATION.

ALL ELEVATIONS REFERRING TO U.S.G.S. MEAN SEA LEVEL DATUM.

THE FOLLOWING RATES OF APPLICATION HAVE BEEN USED IN CALCULATING PLAN QUANTITIES:

GRANULAR MATERIALS	2.05	TONS / CU YD
HMA RESURFACING	112	LBS / SQ YD / IN
SHORT TERM PAVEMENT MARKING	10	FT /100 FT OF APPLICATION
MIX FOR CRACKS, JTS & FLGWYS	6	TONS / SQ YD
LEVEL BINDER (HAND METHOD)		TONS / SQ YD
SUPPLEMENTAL WATERING		GAL / SQ YD / APPLICATION
CALCIUM CHLORIDE		LB / SQ YD / APPLICATION
AGGREGATE DITCH CHECKS		TONS AGGREGATE

ALL DAMAGE TO DEPARTMENT OWNED UNDERGROUND FACILITIES, CAUSED BY THE CONTRACTOR SHALL BE REPAIRED TO THE SATISFACTION OF THE ENGINEER AND AT NO EXPENSE TO THE DEPARTMENT. THIS SHALL INCLUDE ALL TEMPORARY REPAIRS REQUIRED TO KEEP THE FACILITY OPERATIONAL WHILE MATERIAL IS BEING OBTAINED TO MAKE PERMANENT REPAIRS. SPlicing OF ELECTRIC CABLE WILL NOT BE ALLOWED. ELECTRIC CABLE SHALL BE REPLACED FROM POLE TO POLE OR CONTROLLER.

MEMBERS OF JULIE KNOWN TO BE WITHIN THE LIMITS OF THE IMPROVEMENT ARE: AT&T, COMED, FRONTIER, MEDIACOM, MIDWEST FIBER NETWORKS, NICOR, WALNUT RIDGE WIND, VILLAGE OF WALNUT

THE CONTRACTOR SHALL CONTACT JULIE ATLEAST 48 HOURS PRIOR TO EXCAVATION TO DETERMINE WHICH UTILITIES ARE IN THE AREA

COMMITMENTS

None

HMA MIXTURE REQUIREMENT TABLE

LOCATIONS:	ENTIRE PROJECT	ENTIRE PROJECT	ENTIRE PROJECT
MIXTURE USE(S):	HMA BINDER	HMA SURFACE	HMA INCIDENTAL
BINDER GRADE (PG):	PG 64-22	PG 64-22	PG 64-22
DESIGN AIR VOIDS:	4.0% @ N50	4.0% @ N50	4.0% @ N50
MIXTURE COMPOSITION: (MIXTURE GRADATION)	IL 19.0	IL 9.5	IL 9.5
FRICTION AGGREGATE:		MIXTURE C	MIXTURE C
MIXTURE WEIGHT:	112.0 LB/SY/IN	112.0 LB/SY/IN	112.0 LB/SY/IN
QUALITY MANAGEMENT PROGRAM:	QCP	QCP	QCOA
SUBLOT SIZE:	1000 TONS	1000 TONS	N/A
DENSITY TEST METHOD:	CORES	CORES	CORES/NUCLEAR
MATERIAL TRANSFER DEVICE (REQUIRED)	YES	YES	NO

STATE OF ILLINOIS
DEPARTMENT OF TRANSPORTATION
DISTRICT THREE
AS BUILT INFORMATION

SUPERVISING CONSTRUCTION FIELD ENGINEER

RESIDENT ENGINEER / TECHNICIAN

START & END DATES
OF CONSTRUCTION:

INSPECTORS:

MODEL: Default
FILE: \\blmfe-pw-backend.com\FW\DOT\Documents\DOT_Offices\District_3\Project\13566967\CaddData\CaddSheet\13566967-sh-cove.dgn

USER NAME = Boudle,Shan	DESIGNED -	REVISED -
	DRAWN -	REVISED -
PLOT SCALE = 100,0000' / in.	CHECKED -	REVISED -
PLOT DATE = 10/25/2023	DATE -	REVISED -

**STATE OF ILLINOIS
DEPARTMENT OF TRANSPORTATION**

GENERAL NOTES

SCALE: SHEET OF SHEETS STA. TO STA.

F.A.P. RTE.	SECTION	COUNTY	TOTAL SHEETS	SHEET NO.
587	135 RS-5 & 137 RS-4	BUREAU	23	2
			CONTRACT NO. 66967	
		ILLINOIS	FED. AID PROJECT	

CODE NO.	ITEM	UNIT	TOTAL QUANTITY	CONSTR. CODE	
				80% FED 20% STATE	
				STP	
				ROADWAY	
				0005	
				RURAL	
20200100	EARTH EXCAVATION	CU YD	320		320
20300100	CHANNEL EXCAVATION	CU YD	20		20
20400800	FURNISHED EXCAVATION	CU YD	50		50
21400100	GRADING AND SHAPING DITCHES	FOOT	1230		1230
25000210	SEEDING, CLASS 2A	ACRE	0.75		0.75
25000400	NITROGEN FERTILIZER NUTRIENT	POUND	67.5		67.5
25000500	PHOSPHORUS FERTILIZER NUTRIENT	POUND	67.5		67.5
25000600	POTASSIUM FERTILIZER NUTRIENT	POUND	67.5		67.5
25100630	EROSION CONTROL BLANKET	SQ YD	3630		3630
28100107	STONE RIPRAP, CLASS A4	SQ YD	52		52
28200200	FILTER FABRIC	SQ YD	52		52
40600290	BITUMINOUS MATERIALS (TACK COAT)	POUND	46355		46355
40600370	LONGITUDINAL JOINT SEALANT	FOOT	22874		22874
40600400	MIXTURE FOR CRACKS, JOINTS, AND FLANGEWAYS	TON	20		20

MODEL: Default
 FILE NAME: p:\ultra-cw-bea\caw.com\PIV\DOT\Documents\DOT Office\Dir\dir: 3\Project\3566967\CADD\data\CAD\Sheet\3566967-sh-500.dgn

USER NAME = Boudie,Shan	DESIGNED -	REVISED -
	DRAWN -	REVISED -
PLOT SCALE = 100,0000' / in.	CHECKED -	REVISED -
PLOT DATE = 10/25/2023	DATE -	REVISED -

**STATE OF ILLINOIS
DEPARTMENT OF TRANSPORTATION**

SUMMARY OF QUANTITIES

SCALE: SHEET OF SHEETS STA. TO STA.

F.A.P. RTE.	SECTION	COUNTY	TOTAL SHEETS	SHEET NO.
587	135 RS-5 & 137 RS-4	BUREAU	23	3
CONTRACT NO. 66967				
ILLINOIS FED. AID PROJECT				

CODE NO.	ITEM	UNIT	TOTAL QUANTITY	CONSTR. CODE	
				80% FED 20% STATE	
				STP	
				ROADWAY	
				0005	
				RURAL	
40600900	HOT-MIX ASPHALT BINDER COURSE (HAND METHOD), N50	TON	33		33
40600990	TEMPORARY RAMP	SQ YD	274		274
40603080	HOT-MIX ASPHALT BINDER COURSE, IL-19.0, N50	TON	8284		8284
40604050	HOT-MIX ASPHALT SURFACE COURSE, IL-9.5, MIX "C", N50	TON	6095		6095
40800050	INCIDENTAL HOT-MIX ASPHALT SURFACING	TON	314		314
44000155	HOT-MIX ASPHALT SURFACE REMOVAL, 1 1/2"	SQ YD	757		757
44000164	HOT-MIX ASPHALT SURFACE REMOVAL, 3 3/4"	SQ YD	65752		65752
48102100	AGGREGATE WEDGE SHOULDER, TYPE B	TON	1731		1731
50102400	CONCRETE REMOVAL	CU YD	0.48		0.48
50300225	CONCRETE STRUCTURES	CU YD	0.65		0.65
50800205	REINFORCEMENT BARS, EPOXY COATED	POUND	130		130
54002080	EXPANSION BOLTS 3/4 INCH X 18 INCH	EACH	20		20
54248510	CONCRETE COLLAR	CU YD	1.2		1.2
54390160	INSERTION CULVERT LINER 21"	FOOT	84		84

MODEL: Default
 FILE NAME: p:\ultra-cw-bea\caw.com\PIV\DOT\Documents\DOT Office\Dir\dir: 3\Project\366667\CADD\data\CAD\Sheet\366667-ht-500.dgn

USER NAME = Boudle,Shan	DESIGNED -	REVISED -
	DRAWN -	REVISED -
PLOT SCALE = 100,0000 ' / in.	CHECKED -	REVISED -
PLOT DATE = 10/25/2023	DATE -	REVISED -

**STATE OF ILLINOIS
DEPARTMENT OF TRANSPORTATION**

SUMMARY OF QUANTITIES

SCALE: SHEET OF SHEETS STA. TO STA.

F.A.P RTE.	SECTION	COUNTY	TOTAL SHEETS	SHEET NO.
587	135 RS-5 & 137 RS-4	BUREAU	23	4
CONTRACT NO. 66967				
ILLINOIS FED. AID PROJECT				

MODEL: Default
 FILE NAME: p:\ultra-cw-beach\com\PI\INDOT\Documents\DOT Office\Dir\dir: 3\Project\366967\CADD\data\CAD\Sheet\366967-sh-500.dgn

CODE NO.	ITEM	UNIT	TOTAL QUANTITY	CONSTR. CODE	
				80% FED 20% STATE STP	
				ROADWAY	
				0005	RURAL
60905305	BOX CULVERTS TO BE CLEANED	FOOT	142		142
* 63000001	STEEL PLATE BEAM GUARDRAIL, TYPE A, 6 FOOT POSTS	FOOT	562.5		562.5
* 63000350	LONG-SPAN GUARDRAIL OVER CULVERT, 12 FT 6 IN SPAN	FOOT	75		75
* 63100167	TRAFFIC BARRIER TERMINAL, TYPE 1 (SPECIAL) TANGENT	EACH	4		4
63200310	GUARDRAIL REMOVAL	FOOT	796		796
63500105	DELINEATORS	EACH	12		12
* 66700205	PERMANENT SURVEY MARKERS, TYPE I	EACH	3		3
* 66900200	NON-SPECIAL WASTE DISPOSAL	CU YD	24		24
* 66900530	SOIL DISPOSAL ANALYSIS	EACH	1		1
* 66901001	REGULATED SUBSTANCES PRE-CONSTRUCTION PLAN	L SUM	1		1
* 66901003	REGULATED SUBSTANCES FINAL CONSTRUCTION REPORT	L SUM	1		1
* 66901006	REGULATED SUBSTANCES MONITORING	CAL DA	1		1
67000400	ENGINEER'S FIELD OFFICE, TYPE A	CAL MO	1		1
67100100	MOBILIZATION	L SUM	1		1

*= SPECIALTY ITEM

USER NAME = Boudle,Shan	DESIGNED -	REVISED -
	DRAWN -	REVISED -
PLOT SCALE = 100,0000' / in.	CHECKED -	REVISED -
PLOT DATE = 10/25/2023	DATE -	REVISED -

**STATE OF ILLINOIS
 DEPARTMENT OF TRANSPORTATION**

SUMMARY OF QUANTITIES			
SCALE:	SHEET	OF SHEETS	STA. TO STA.

F.A.P. RTE.	SECTION	COUNTY	TOTAL SHEETS	SHEET NO.
587	135 RS-5 & 137 RS-4	BUREAU	23	5
CONTRACT NO. 66967				
ILLINOIS FED. AID PROJECT				

MODEL: Default
 FILE NAME: p:\ultra-pw-bentley.com\p\INDOT\Documents\DOT Office\Dir\dir: 3\Project\366967\CADDData\CAD\Sheet\366967-sh-500.dgn

CODE NO.	ITEM	UNIT	TOTAL QUANTITY	CONSTR. CODE	
				80% FED 20% STATE	
				STP	
				ROADWAY	
				0005	
				RURAL	
70100450	TRAFFIC CONTROL AND PROTECTION, STANDARD 701201	L SUM	1		1
70100460	TRAFFIC CONTROL AND PROTECTION, STANDARD 701306	L SUM	1		1
70300100	SHORT TERM PAVEMENT MARKING	FOOT	2296		2296
70300150	SHORT TERM PAVEMENT MARKING REMOVAL	SQ FT	766		766
* 72501000	TERMINAL MARKER - DIRECT APPLIED	EACH	4		4
* 78000100	THERMOPLASTIC PAVEMENT MARKING - LETTERS AND SYMBOLS	SQ FT	122		122
* 78000200	THERMOPLASTIC PAVEMENT MARKING - LINE 4"	FOOT	2838		2838
* 78000500	THERMOPLASTIC PAVEMENT MARKING - LINE 8"	FOOT	280		280
* 78000600	THERMOPLASTIC PAVEMENT MARKING - LINE 12"	FOOT	303		303
* 78000650	THERMOPLASTIC PAVEMENT MARKING - LINE 24"	FOOT	126		126
* 78009004	MODIFIED URETHANE PAVEMENT MARKING - LINE 4"	FOOT	98320		98320
* 78009006	MODIFIED URETHANE PAVEMENT MARKING - LINE 6"	FOOT	11208		11208
* 78011000	GROOVING FOR RECESSED PAVEMENT MARKING, LETTERS AND SYMBOLS	SQ FT	122		122
* 78011025	GROOVING FOR RECESSED PAVEMENT MARKING 5"	FOOT	2778		2778

*= SPECIALTY ITEM

USER NAME = Boudie,Shan	DESIGNED -	REVISED -	STATE OF ILLINOIS DEPARTMENT OF TRANSPORTATION	SUMMARY OF QUANTITIES				F.A.P. RTE.	SECTION	COUNTY	TOTAL SHEETS	SHEET NO.
PLOT SCALE = 100,0000 ' / in.	DRAWN -	REVISED -						587	135 RS-5 & 137 RS-4	BUREAU	23	6
PLOT DATE = 10/25/2023	CHECKED -	REVISED -		CONTRACT NO. 66967				ILLINOIS FED. AID PROJECT				
	DATE -	REVISED -		SCALE:	SHEET	OF	SHEETS	STA.	TO STA.			

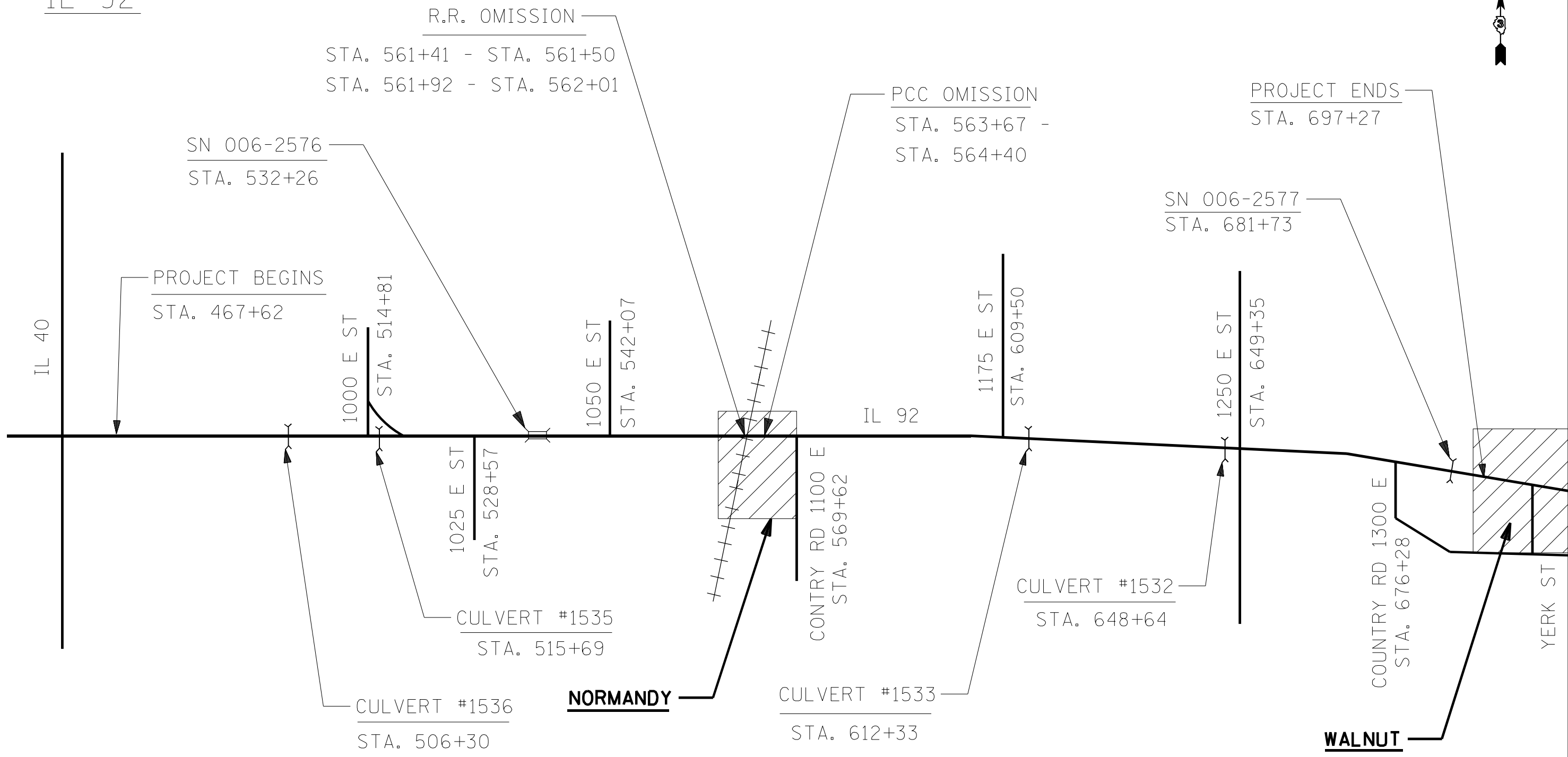
CODE NO.	ITEM	UNIT	TOTAL QUANTITY	CONSTR. CODE	
				80% FED	20% STATE
				STP	
				ROADWAY	
				0005	
				RURAL	
* 78011035	GROOVING FOR RECESSED PAVEMENT MARKING 7"	FOOT	180		180
* 78011045	GROOVING FOR RECESSED PAVEMENT MARKING 9"	FOOT	280		280
* 78011065	GROOVING FOR RECESSED PAVEMENT MARKING 13"	FOOT	303		303
* 78011125	GROOVING FOR RECESSED PAVEMENT MARKING 25"	FOOT	78		78
* 78100100	RAISED REFLECTIVE PAVEMENT MARKER	EACH	299		299
* 78200005	GUARDRAIL REFLECTORS, TYPE A	EACH	12		12
78300200	RAISED REFLECTIVE PAVEMENT MARKER REMOVAL	EACH	299		299
78300201	PAVEMENT MARKING REMOVAL - GRINDING	SQ FT	2377		2377
X4401190	HOT-MIX ASPHALT SURFACE REMOVAL, VARIABLE DEPTH	SQ YD	3225		3225
X6350204	LINEAR DELINEATOR PANELS, 4 INCH	EACH	12		12
Z0005216	HOT-MIX ASPHALT STABILIZATION 6" AT STEEL PLATE BEAM GUARD RAIL	SQ YD	584		584
Z0030850	TEMPORARY INFORMATION SIGNING	SQ FT	42		42
Z0034105	MATERIAL TRANSFER DEVICE	TON	14379		14379
Z0048665	RAILROAD PROTECTIVE LIABILITY INSURANCE	L SUM	1		1

*= SPECIALTY ITEM

MODEL: Default
 FILE NAME: p:\ultra-pw-bentley.com\PIV\DOT\Documents\DOT Office\Dir\dir: 3\Project\366967\CADD\data\CAD\Sheet\366967-sh-500.dgn

USER NAME = Boudle,Shan	DESIGNED -	REVISED -	STATE OF ILLINOIS DEPARTMENT OF TRANSPORTATION	SUMMARY OF QUANTITIES				F.A.P RTE.	SECTION	COUNTY	TOTAL SHEETS	SHEET NO.
PLOT SCALE = 100,0000' / in.	DRAWN -	REVISED -						587	135 RS-5 & 137 RS-4	BUREAU	23	7
PLOT DATE = 10/25/2023	CHECKED -	REVISED -		SCALE: SHEET OF SHEETS STA. TO STA.				CONTRACT NO. 66967				
	DATE -	REVISED -						ILLINOIS FED. AID PROJECT				

IL 92



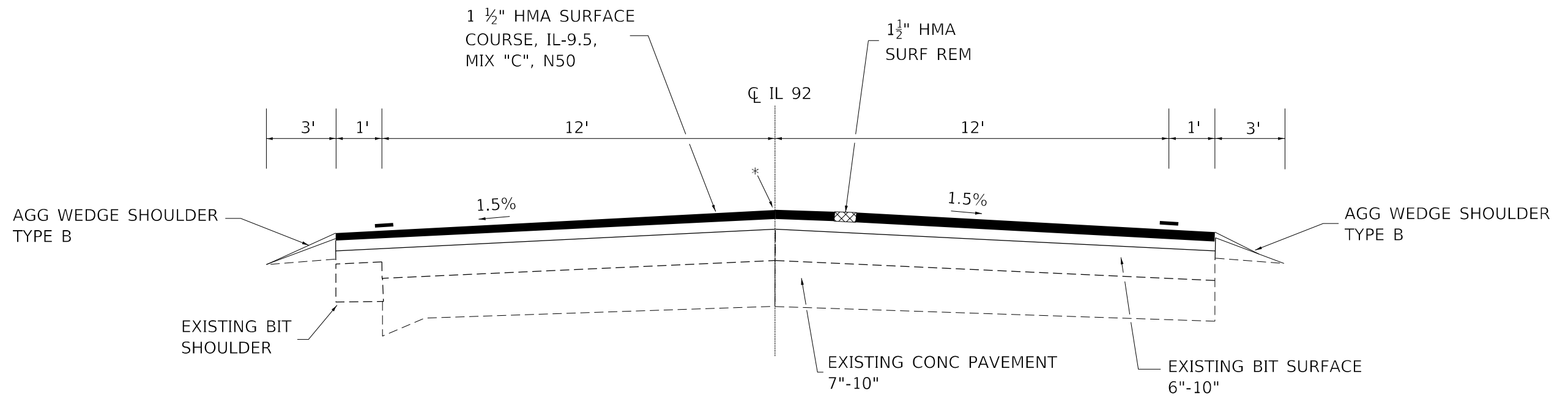
MODEL: Default
 FILE NAME: p:\ultra-cw-beadley.com\PIV\DOT\Documents\DOT Office\Dir\dir: 3\Project\ID366967\CADD\data\CADD\sheet\ID366967-sh-detailed.dgn

USER NAME = Boudle,Shan	DESIGNED -	REVISED -
	DRAWN -	REVISED -
PLOT SCALE = 100,0000' / in.	CHECKED -	REVISED -
PLOT DATE = 10/25/2023	DATE -	REVISED -

**STATE OF ILLINOIS
DEPARTMENT OF TRANSPORTATION**

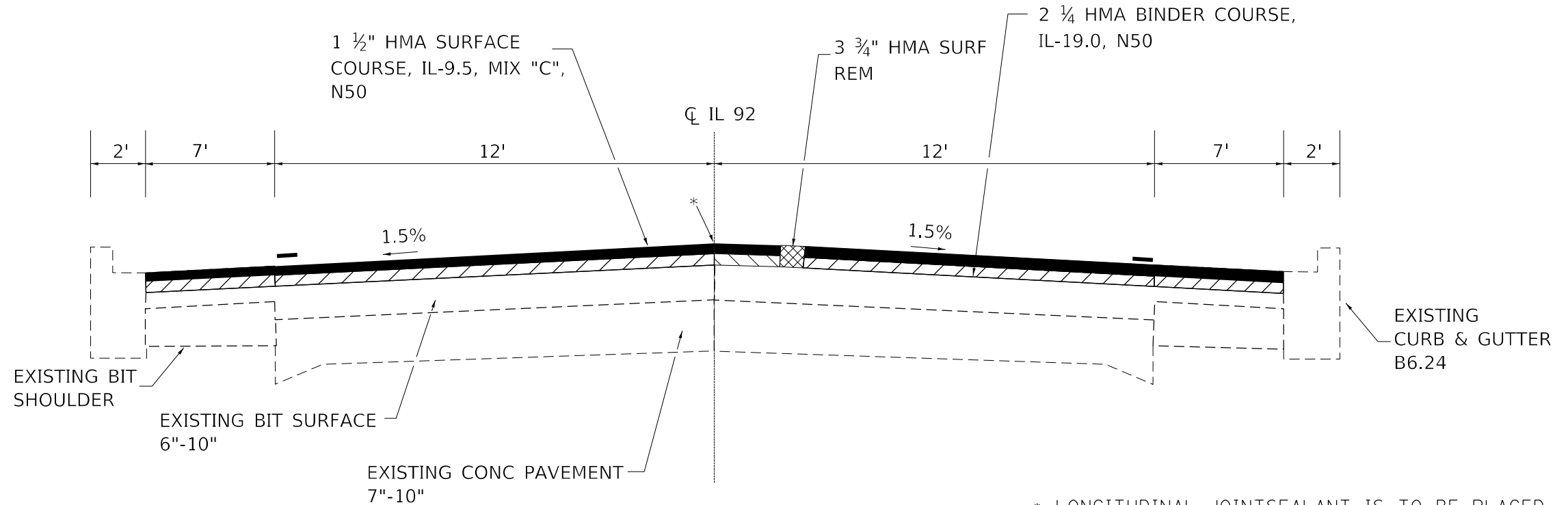
LINE DIAGRAM				
SCALE:	SHEET	OF	SHEETS	STA. TO STA.

F.A.P. RTE.	SECTION	COUNTY	TOTAL SHEETS	SHEET NO.
587	135 RS-5 & 137 RS-4	BUREAU	23	8
CONTRACT NO. 66967				
ILLINOIS FED. AID PROJECT				



PROPOSED TYPICAL SECTION 3

STA 560+31 TO STA 561+41
 RAILROAD OMISSION STA 561+41 TO STA 561+50
 STA 561+50 TO STA 561+92
 RAILROAD OMISSION STA 561+92 TO STA 562+01
 STA 562+01 TO STA 563+11



PROPOSED TYPICAL SECTION 4

STA 694+75 TO STA 697+27

* LONGITUDINAL JOINT SEALANT IS TO BE PLACED UNDER THE HMA SURFACE

MODEL: Default
 FILE: Mainfile.pwd
 SUBJECT: new benchmark.com
 PLOT DATE: 10/25/2023

USER NAME = Boudle,Shan	DESIGNED -	REVISED -
PLOT SCALE = 100,0000' / in.	DRAWN -	REVISED -
PLOT DATE = 10/25/2023	CHECKED -	REVISED -
	DATE -	REVISED -

**STATE OF ILLINOIS
 DEPARTMENT OF TRANSPORTATION**

TYPICAL SECTIONS

SCALE: SHEET OF SHEETS STA. TO STA.

F.A.R. RTE.	SECTION	COUNTY	TOTAL SHEETS	SHEET NO.
587	135 RS-5 & 137 RS-4	BUREAU	23	10
CONTRACT NO. 66967				
ILLINOIS FED. AID PROJECT				

MONUMENT NUMBER	DESCRIPTION	APPROXIMATE LOCATION	EXISTING MONUMENT TYPE	PROPOSED MONUMENT TYPE	MONUMENT RECORD TO BE RECORDED	RESPONSIBILITY
TR092081	E QTR COR SECTION 10, T18N, R7E, 4TH PM	1000 E RD	SURVEY NAIL - HOGLUND	SURVEY NAIL	YES	2
TRA092081	E QTR COR SECTION 10, T18N, R7E, 4TH PM	1000 E RD	NAIL STEM - WALLACE	SURVEY NAIL	YES WITH A092081	2
TR092082	CENTER SECTION 11, T18N, R7E, 4TH PM	1050 E RD	MISSING	TYPE 1	YES	1
TR092083	E QTR COR SECTION 11, T18N, R7E, 4TH PM	1100 E RD	NAIL STEM PER MONUMENT RECORDS	TYPE 1	YES	1
TR092084	CENTER SECTION 12, T18N, R7E, 4TH PM	1/2 MI EAST OF 1100 E RD	MISSING	TYPE 1	YES	1

UNKNOWN MONUMENTS SET BY OTHERS MAY EXIST. IF AN UNLISTED MONUMENT IS FOUND, R.E. IS REQUIRED TO PROTECT THE MONUMENT FROM DAMAGE UNTIL A PLATS AND PLANS LAND SURVEYOR CAN DOCUMENT THE MONUMENT. PLATS AND PLANS WILL RESET SUCH MONUMENTS IN KIND FOLLOWING CONSTRUCTION.

UPON PAVING COMPLETION R.E. WILL DIRECT PLATS AND PLANS TO STAKE THE TYPE 1 MONUMENT LOCATIONS FOR CORING.
NOTE: FOR BIDDING PURPOSES NO CONTRACTED LAND SURVEYING SERVICES WILL BE REQUIRED.
PLATS AND PLANS WILL FILE THE REQUIRED MONUMENT RECORDS.

RESPONSIBILITY:

- 1) RESIDENT TO RE-ESTABLISH MONUMENT (PAY ITEM REQUIRED. PERMANENT SURVEY MARKER, TYPE 1)
- 2) PLATS AND PLANS TO RE-ESTABLISH MONUMENT

MODEL: Default
FILE NAME: p:\ultra-cw-bea\paw.com\PIV\DOT\Documents\DOT Office\Dir\dir: 3\Project\366967\CADD\data\CAD\Sheet\366967-sh-1-detailed.dgn

USER NAME = Boudle,Shan	DESIGNED -	REVISED -
	DRAWN -	REVISED -
PLOT SCALE = 100,0000 ' / in.	CHECKED -	REVISED -
PLOT DATE = 10/25/2023	DATE -	REVISED -

**STATE OF ILLINOIS
DEPARTMENT OF TRANSPORTATION**

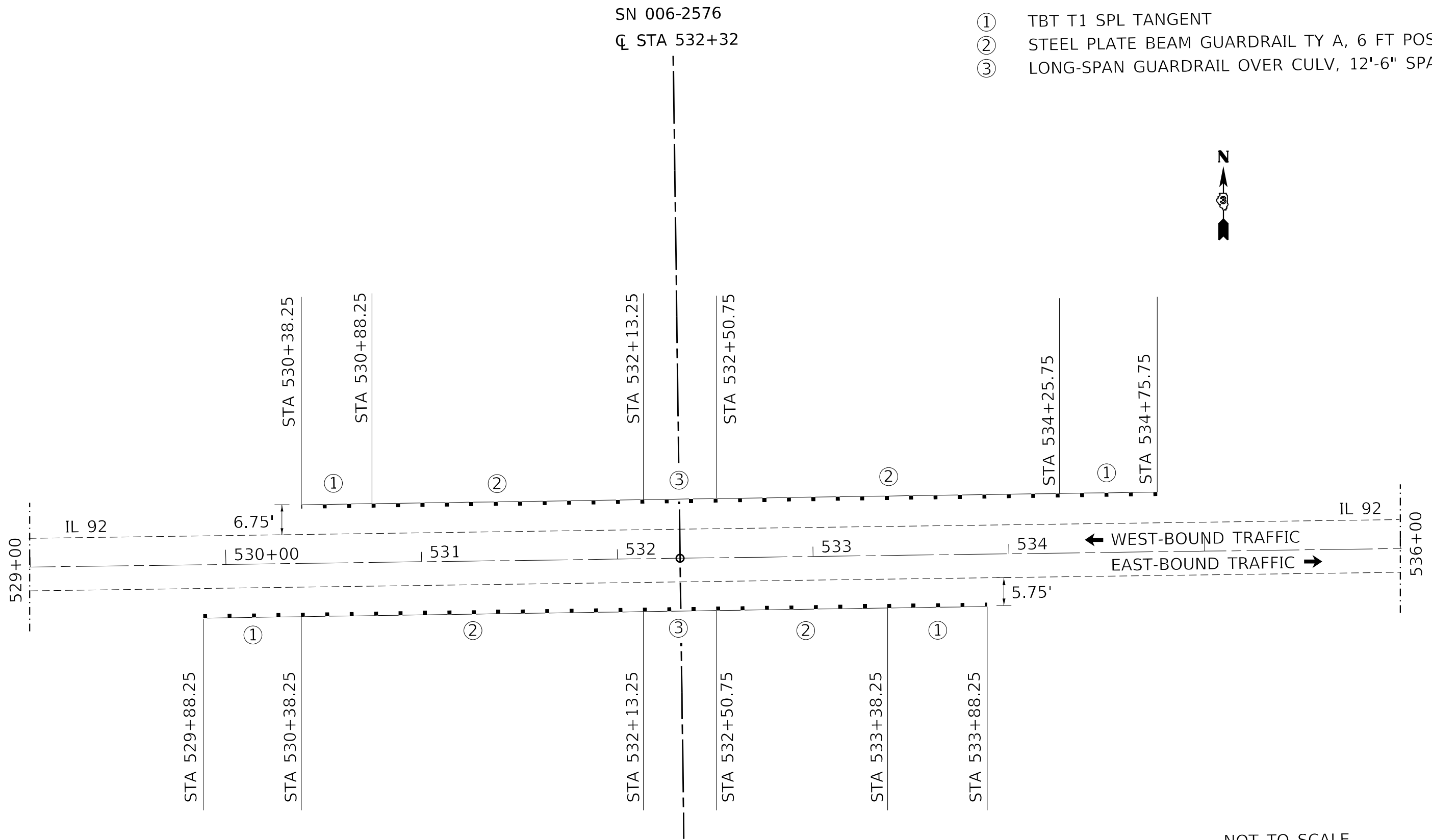
PERMANENT SURVEY MARKERS

SCALE: SHEET OF SHEETS STA. TO STA.

F.A.P. RTE.	SECTION	COUNTY	TOTAL SHEETS	SHEET NO.
587	135 RS-5 & 137 RS-4	BUREAU	23	11
CONTRACT NO. 66967				
ILLINOIS FED. AID PROJECT				

LEGEND

- ① TBT T1 SPL TANGENT
- ② STEEL PLATE BEAM GUARDRAIL TY A, 6 FT POSTS
- ③ LONG-SPAN GUARDRAIL OVER CULV, 12'-6" SPAN



NOT TO SCALE

MODEL: Default
 FILE: Mainfile.pxl
 SUBJECT: new_bentley.com:PIV\DOT\Documents\DOT_Offices\Dir\dir: 3\Project\ID366967\CADD\data\CAD\Sheet\ID366967-sh-detailed.dgn

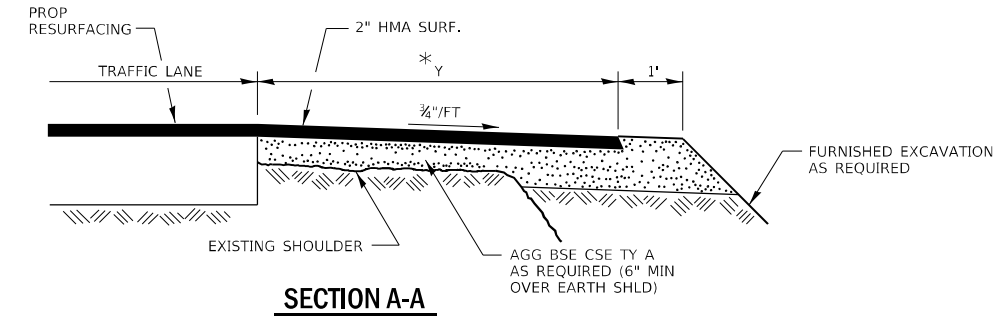
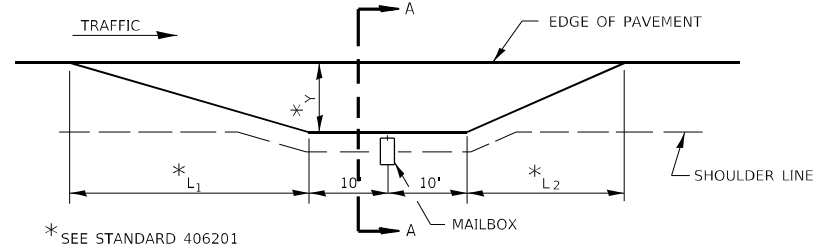
USER NAME = Boudle,Shan	DESIGNED -	REVISED -
	DRAWN -	REVISED -
PLOT SCALE = 100,0000' / in.	CHECKED -	REVISED -
PLOT DATE = 10/25/2023	DATE -	REVISED -

**STATE OF ILLINOIS
DEPARTMENT OF TRANSPORTATION**

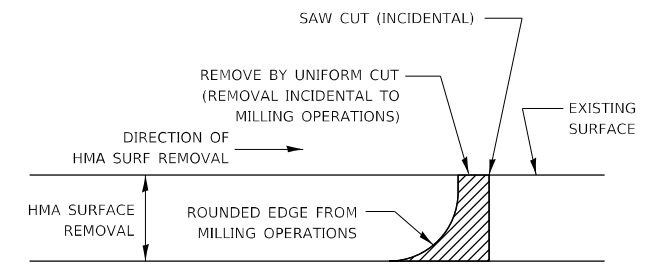
GUARDRAIL DETAILS

SCALE: SHEET OF SHEETS STA. TO STA.

F.A.P. RTE.	SECTION	COUNTY	TOTAL SHEETS	SHEET NO.
587	135 RS-5 & 137 RS-4	BUREAU	23	17
CONTRACT NO. 66967				
ILLINOIS FED. AID PROJECT				

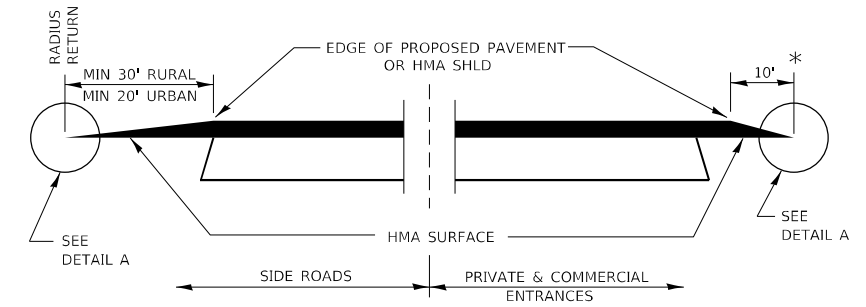


RURAL MAILBOX TURNOUT DETAILS

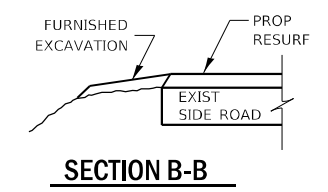


NOTE:
WHEN MILLING OPERATIONS PRODUCE A ROUNDED EDGE, THEN A SAW CUT SHALL BE USED TO MANUFACTURE A PERPENDICULAR EDGE AS SHOWN IN THE DETAIL. THE ENGINEER SHALL BE THE SOLE JUDGE CONCERNING THE USE OF THIS DETAIL.

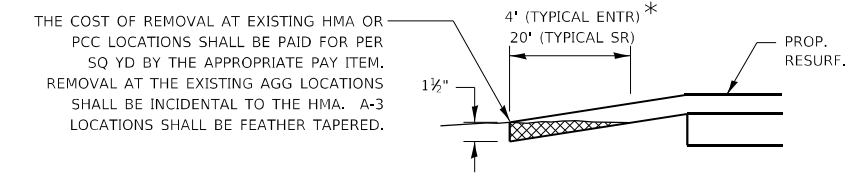
HMA DETAIL AT BUTT JOINTS



**SECTION A-A
DETAILS AT ENTRANCES & SIDE ROADS**

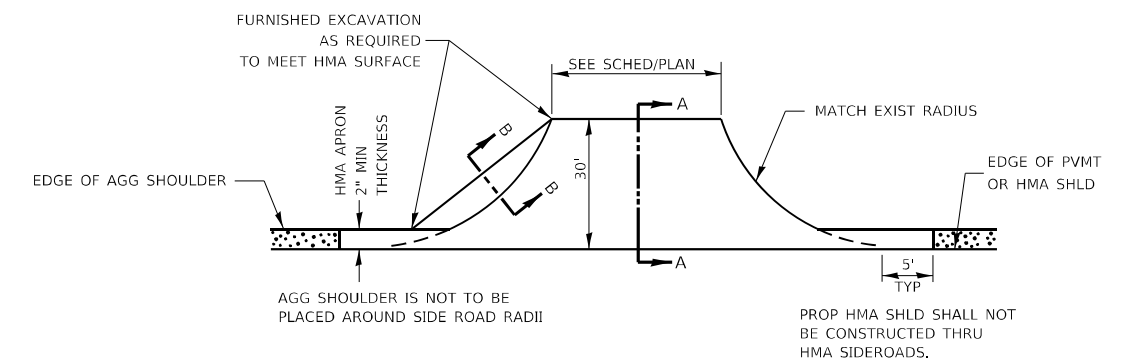


SECTION B-B

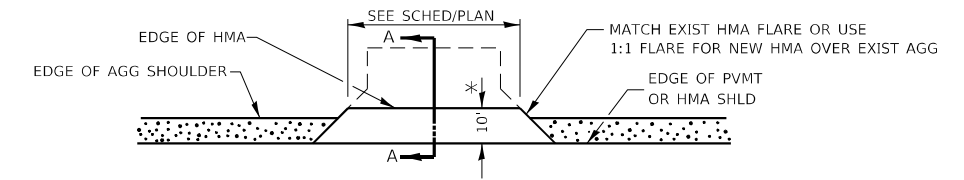


DETAIL A

THE COST OF REMOVAL AT EXISTING HMA OR PCC LOCATIONS SHALL BE PAID FOR PER SQ YD BY THE APPROPRIATE PAY ITEM. REMOVAL AT THE EXISTING AGG LOCATIONS SHALL BE INCIDENTAL TO THE HMA. A-3 LOCATIONS SHALL BE FEATHER TAPERED.



PLAN AT SIDE ROADS



PLAN AT PRIVATE & COMMERCIAL ENTRANCES

(DO NOT RESURFACE FIELD ENTRANCES)

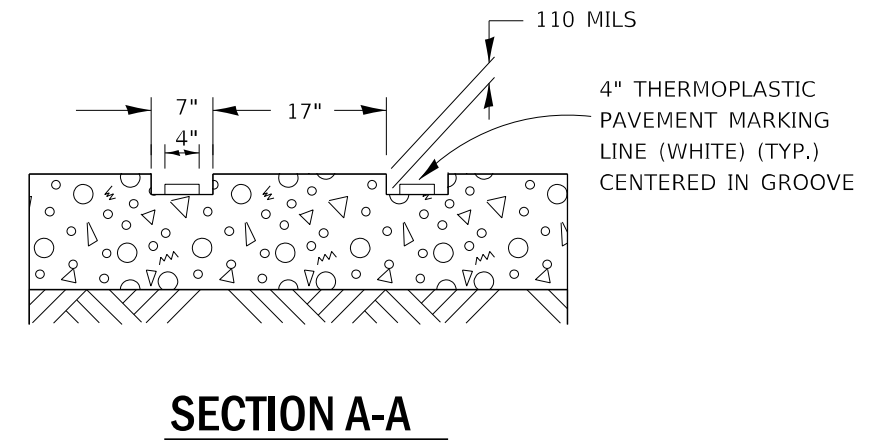
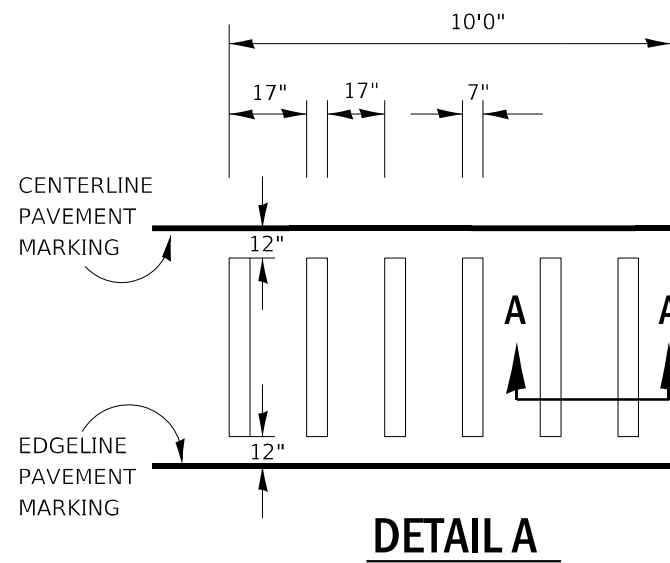
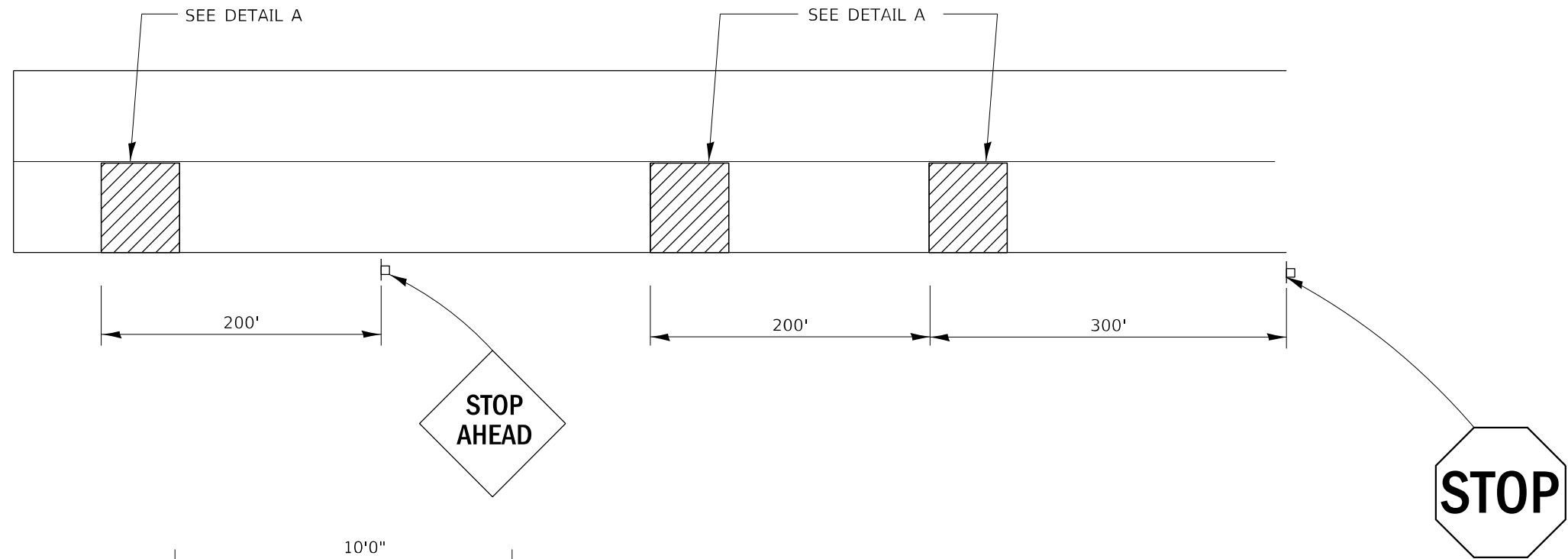
MODEL: Default FILE: hma18c_pav_solidect-pav_bentley.com/P/INDOT/Documents/IDOT_Offices/Dir/rdct_3/Project/ID366967/CADDData/CADDrawings/ID366967-sh-detailed.dgn

USER NAME = Boudle,Shan	DESIGNED -	REVISED -
PLOT SCALE = 100,0000' / in.	DRAWN -	REVISED -
PLOT DATE = 10/25/2023	CHECKED -	REVISED -
	DATE -	REVISED -

**STATE OF ILLINOIS
DEPARTMENT OF TRANSPORTATION**

DETAILS	
SCALE:	SHEET OF SHEETS STA. TO STA.

F.A.P RTE.	SECTION	COUNTY	TOTAL SHEETS	SHEET NO.
587	135 RS-5 & 137 RS-4	BUREAU	23	18
CONTRACT NO. 66967				
ILLINOIS FED. AID PROJECT				



GROOVED RUMBLE STRIP WITH THERMOPLASTIC PVMT MARKING
APPLICATION IN ADVANCE OF AN INTERSECTION

MODEL: Default
FILE: h:\m\p\p\subject-pw-beadley.com\PIV\DOT\Documents\DOT Office\Dir\rdt_3\Project\ID366967\CADD\data\CAD\Sheet\ID366967-sh-detailed.dgn

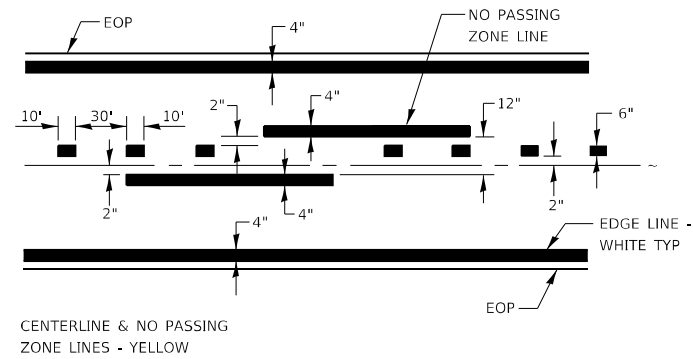
USER NAME = Boudle,Shan	DESIGNED -	REVISED -
	DRAWN -	REVISED -
PLOT SCALE = 100,0000' / in.	CHECKED -	REVISED -
PLOT DATE = 10/25/2023	DATE -	REVISED -

**STATE OF ILLINOIS
DEPARTMENT OF TRANSPORTATION**

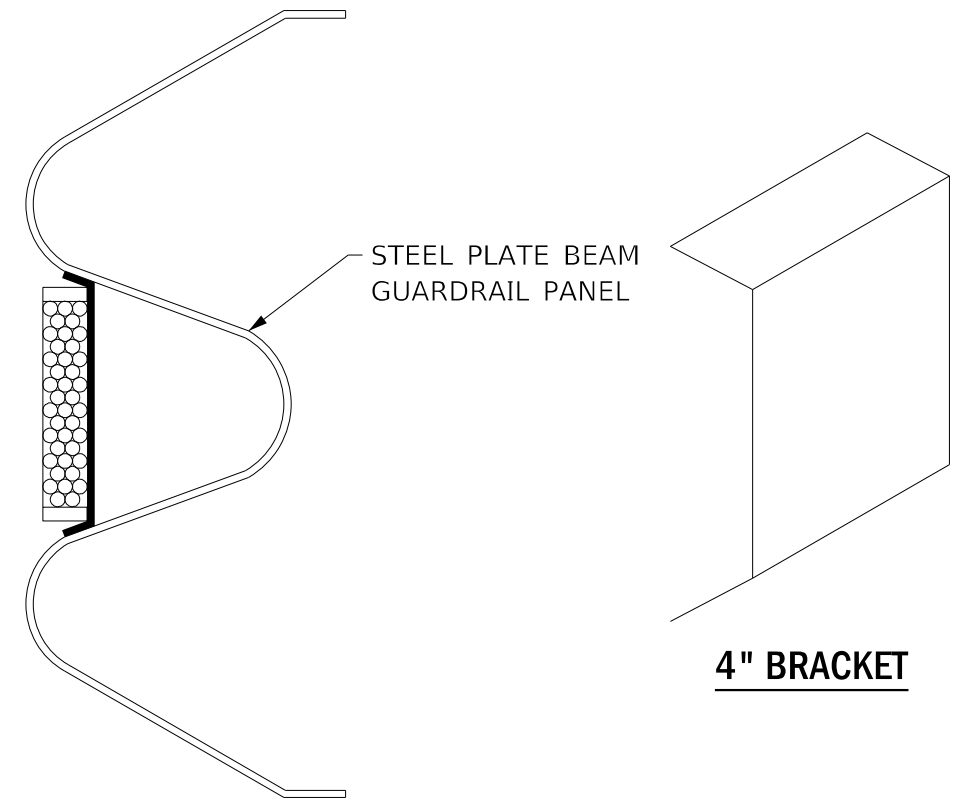
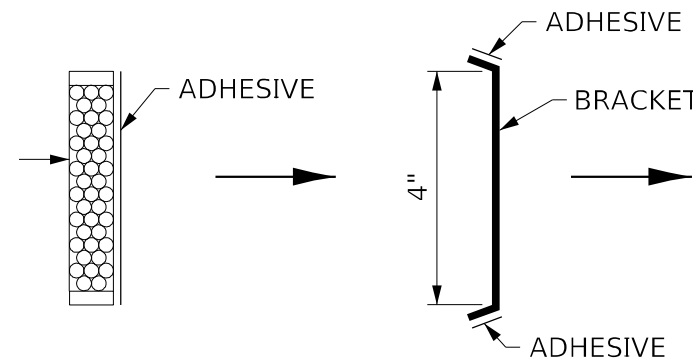
**PAINTED RUMBLE STRIPS
STA 461+08 TO STA 472+15**

SCALE: SHEET OF SHEETS STA. TO STA.

F.A.P. RTE.	SECTION	COUNTY	TOTAL SHEETS	SHEET NO.
587	135 RS-5 & 137 RS-4	BUREAU	23	20
CONTRACT NO. 66967				
ILLINOIS FED. AID PROJECT				



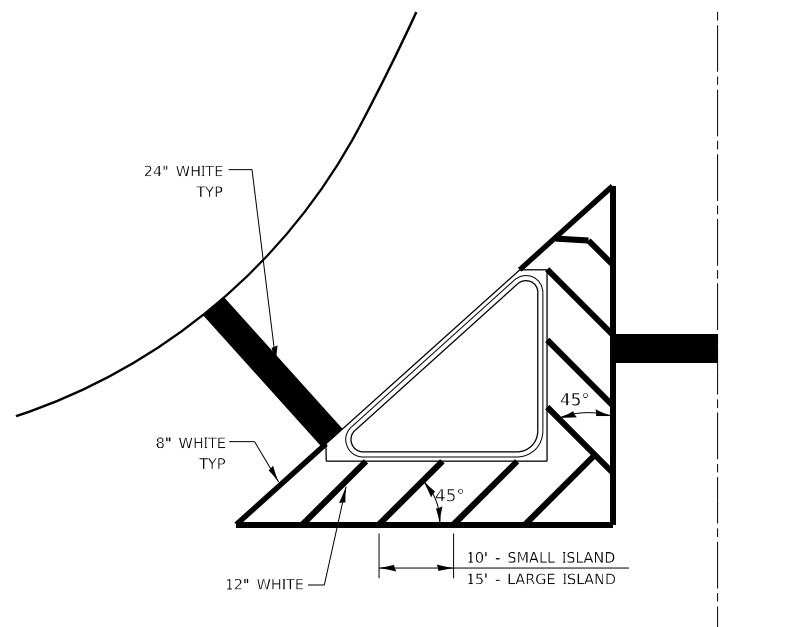
PAVEMENT MARKING



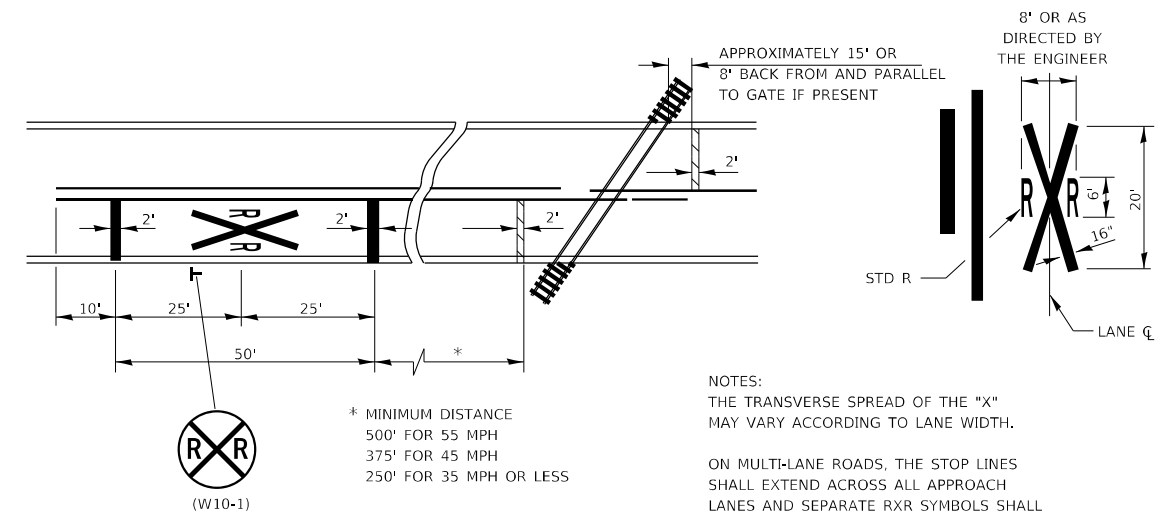
4" BRACKET

LINEATOR DELINEATOR APPLICATION TO STANDARD GALVANIZED GUARDRAIL

LINEATOR DELINEATOR SHALL BE APPLIED ACCORDING TO THE MANUFACTURER'S RECOMMENDATIONS



TYPICAL ISLAND



PAVEMENT MARKINGS AT RAILROAD-HIGHWAY GRADE CROSSING

NOTES:
 THE TRANSVERSE SPREAD OF THE "X" MAY VARY ACCORDING TO LANE WIDTH.
 ON MULTI-LANE ROADS, THE STOP LINES SHALL EXTEND ACROSS ALL APPROACH LANES AND SEPARATE RXR SYMBOLS SHALL BE PLACED ADJACENT TO EACH OTHER IN EACH LANE.
 WHEN THE PAVEMENT MARKING SYMBOL IS USED, A PORTION OF THE SYMBOL SHOULD BE LOCATED DIRECTLY ADJACENT TO THE ADVANCE WARNING SIGN (W10-1).

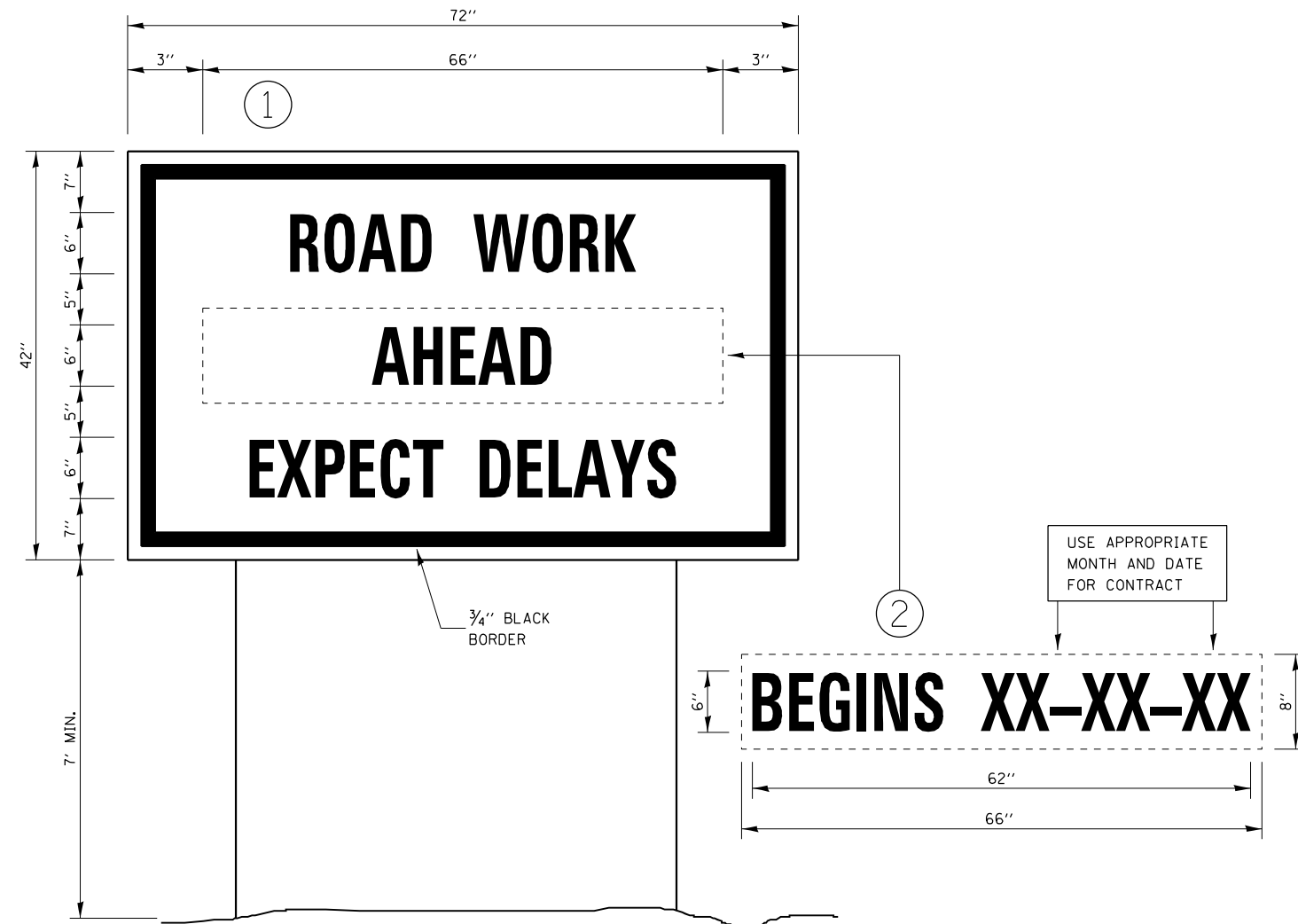
MODEL: D:\draft\...
 FILE: 10/25/2023...
 PROJECT: 10/25/2023...

USER NAME = Boudle,Shan	DESIGNED -	REVISED -
PLOT SCALE = 100,0000' / in.	DRAWN -	REVISED -
PLOT DATE = 10/25/2023	CHECKED -	REVISED -
	DATE -	REVISED -

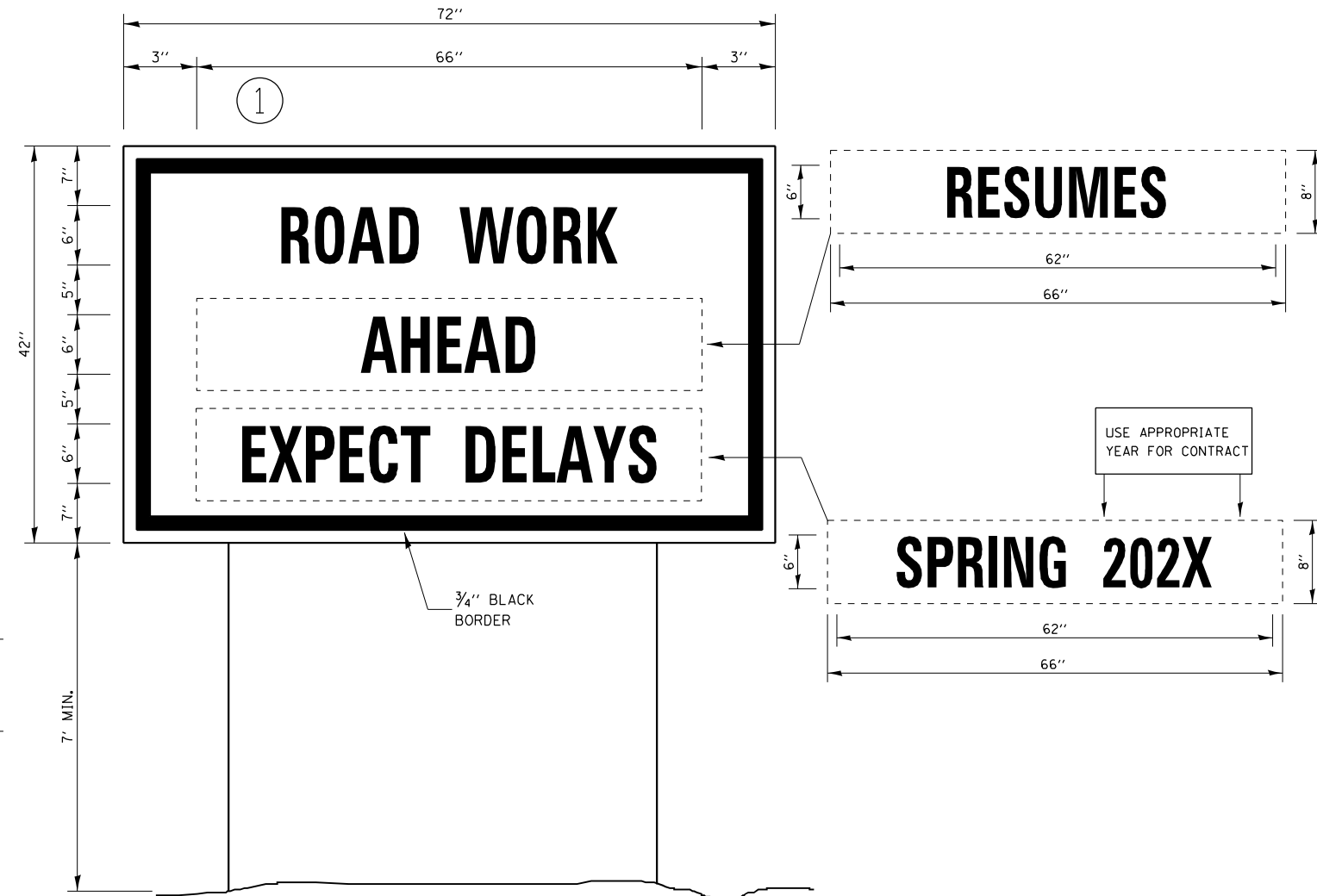
**STATE OF ILLINOIS
 DEPARTMENT OF TRANSPORTATION**

DETAILS				
SCALE:	SHEET	OF	SHEETS	STA. TO STA.

F.A.P. RTE.	SECTION	COUNTY	TOTAL SHEETS	SHEET NO.
587	135 RS-5 & 137 RS-4	BUREAU	23	22
CONTRACT NO. 66967				
ILLINOIS FED. AID PROJECT				



TEMPORARY INFORMATION SIGNING



WINTER SHUT DOWN SIGNING

NOTES:

1. USE 6" D BLACK LETTERING ON FLOURESENT ORANGE BACKGROUND.
2. ERECT SIGNS AT LOCATIONS IN ADVANCE OF THE "ROAD CONSTRUCTION AHEAD" SIGNS AS DIRECTED BY THE ENGINEER.
3. ERECT SIGN ① WITH INSTALLED PANEL ② A MINIMUM OF ONE WEEK PRIOR TO THE START OF THE LANE CLOSURE.
4. REMOVE PANEL ② ON THAT DATE.
5. SEE SPECIAL PROVISION "TEMPORARY INFORMATION SIGNING" FOR ADDITIONAL INFORMATION.
6. WILL BE PAID FOR PER SQ FT AS "TEMPORARY INFORMATION SIGNING". EACH SIGN = 21 SQ FT AND THE DATE PANEL ② WILL NOT BE MEASURED SEPARATELY FOR PAYMENT.

MODEL: Default
 FILE: Model: p:\ultra-cw-bentley.com\p\i\idot\Documents\DOT Office\District 3\Project\ID366967\CADD\data\CAD\Sheet\ID366967-sh-detailed.dgn

USER NAME = Boudle,Shan	DESIGNED -	REVISED -
PLOT SCALE = 100,0000 ' / in.	DRAWN -	REVISED -
PLOT DATE = 10/25/2023	CHECKED -	REVISED -
	DATE -	REVISED -

**STATE OF ILLINOIS
DEPARTMENT OF TRANSPORTATION**

SCALE:		SHEET 1 OF 1 SHEETS			STA. TO STA.		DETAILS	

F.A.P RTE.	SECTION	COUNTY	TOTAL SHEETS	SHEET NO.
587	135 RS-5 & 137 RS-4	BUREAU	23	23
CONTRACT NO. 66967				