

STATE OF ILLINOIS  
DEPARTMENT OF TRANSPORTATION

F.A.I. RTE.	SECTION	COUNTY	TOTAL SHEETS	SHEET NO.
55/70	60-RWS-1	MADISON	11	1
		ILLINOIS	CONTRACT NO. 76R91	

FOR INDEX OF SHEETS, SEE SHEET NO. 2

TRAFFIC DATA

2021 ADT = 22900 (ACTUAL)  
2024 ADT = 23400 (ESTIMATE)  
2044 ADT = 26900 (ESTIMATE)  
SU = 2.4% MU = 21.4%

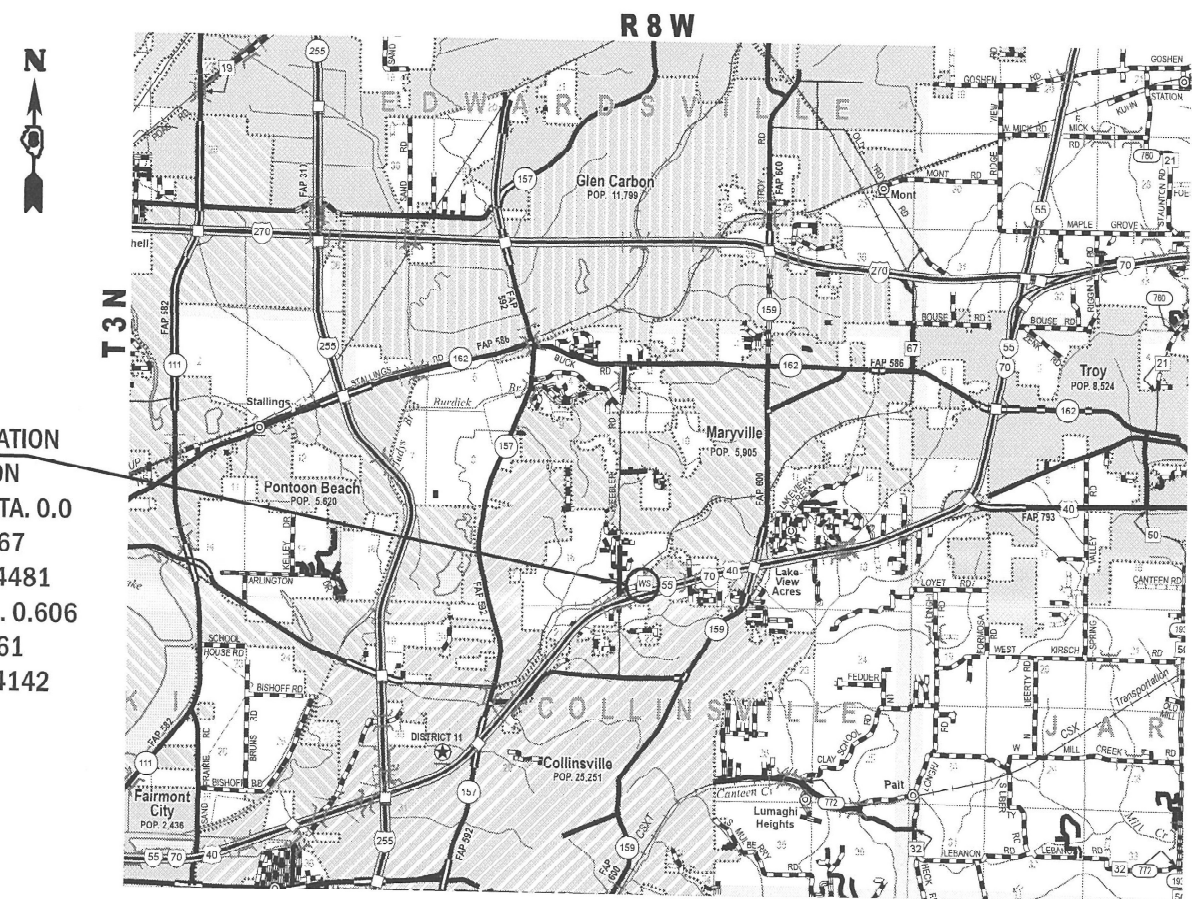
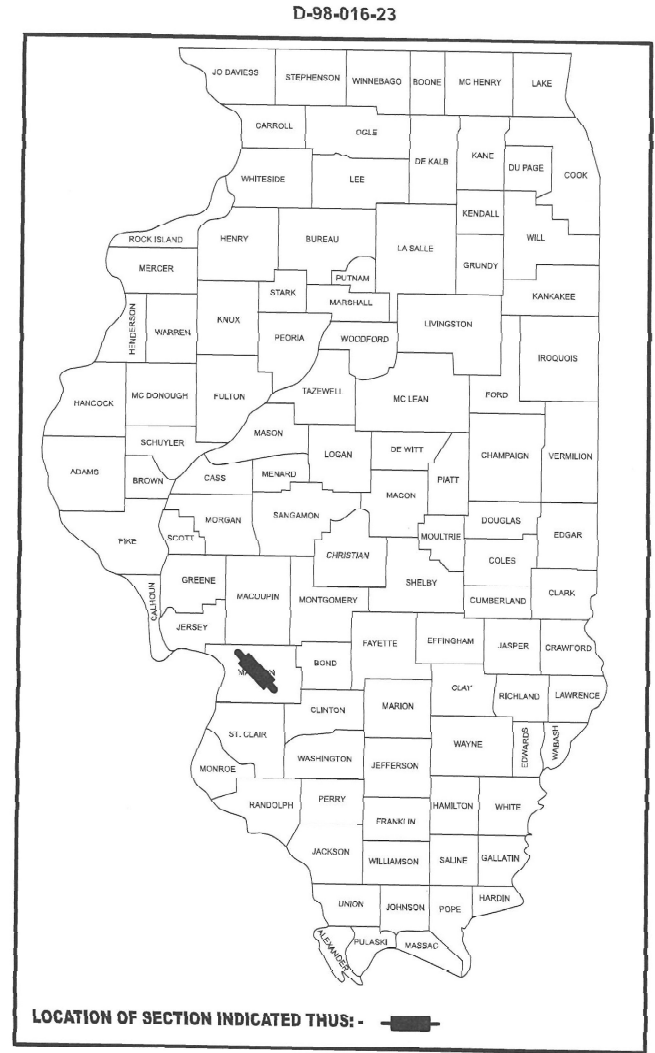
FUNCTIONAL CLASSIFICATION

INTERSTATE

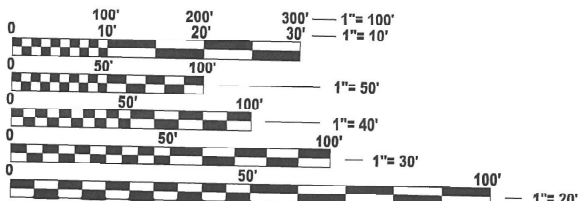
# PROPOSED HIGHWAY PLANS

FAI ROUTE 55/70 (I-055/070) WB  
SECTION 60-8WS-1  
PROJECT NHPP-NA1C(638)  
WEIGH STATION REPAIRS  
MADISON COUNTY

C-98-059-23



PROJECT LOCATION  
WEIGH STATION  
BEGIN MILE STA. 0.0  
LAT: 38.702667  
LONG:-89.984481  
END MILE STA. 0.606  
LAT: 38.705161  
LONG:-89.974142

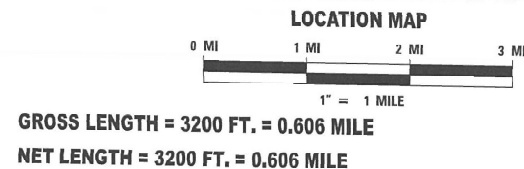


FULL SIZE PLANS HAVE BEEN PREPARED USING STANDARD ENGINEERING SCALES. REDUCED SIZED PLANS WILL NOT CONFORM TO STANDARD SCALES. IN MAKING MEASUREMENTS ON REDUCED PLANS, THE ABOVE SCALES MAY BE USED.

J.U.L.I.E.  
JOINT UTILITY LOCATION INFORMATION FOR EXCAVATION  
1-800-892-0123  
OR 811

PROJECT ENGINEER: BILLIE OWEN  
PROJECT MANAGER: MEIWU AN

CONTRACT NO. 76R91



STATE OF ILLINOIS  
DEPARTMENT OF TRANSPORTATION

SUBMITTED OCTOBER 14 2023

*David H. Brown*  
REGIONAL ENGINEER

December 8, 2023  
*John A. Etk*  
ENGINEER OF DESIGN AND ENVIRONMENT

December 8, 2023  
*Stephen M. Smith*  
DIRECTOR OF HIGHWAYS PROJECT IMPLEMENTATION

PRINTED BY THE AUTHORITY  
OF THE STATE OF ILLINOIS

## INDEX OF SHEETS

1	COVER SHEET
2	INDEX OF SHEETS, HIGHWAY STANDARDS, GENERAL NOTES, & COMMITMENTS
3-4	SUMMARY OF QUANTITIES
5	TYPICAL SECTIONS
6	SCHEDULE OF QUANTITIES
7	GENERAL PLAN AND ELEVATION
8	REMOVAL PLAN AND SECTIONS
9	REPAIR PLAN AND SECTIONS
10	CONCRETE REPAIRS
11	LOCATION MAP

## HIGHWAY STANDARDS

000001-08	STANDARD SYMBOLS, ABBREVIATIONS AND PATTERNS
001001-02	AREAS OF REINFORCEMENT BARS
001006	DECIMAL OF AN INCH AND OF A FOOT
420001-10	PAVEMENT JOINTS
420101-07	24' JOINTED PCC PAVEMENT
420701-03	PAVEMENT WELDED WIRE REINFORCEMENT
442101-09	CLASS B PATCHES
701006-05	OFF-ROAD OPERATIONS, 2L, 2W, 15' (4.5 M) TO 24" (600 MM) FROM PAVEMENT EDGE
701451-05	RAMP CLOSURE FREEWAY/EXPRESSWAY
701901-09	TRAFFIC CONTROL DEVICES
780001-05	TYPICAL PAVEMENT MARKINGS

## GENERAL NOTES

1. AGENCIES KNOWN TO HAVE FACILITIES WITHIN THE PROJECT AREA ARE AS FOLLOWS:

UTILITY	ABOVE GROUND	BELOW GROUND
AMEREN ILLINOIS (GAS & ELECTRIC)	X	X
AT&T ILLINOIS (COMMUNICATIONS)	X	
CHARTER COMMUNICATIONS, INC. (CABLE TV)	X	
DEPARTMENT OF CENTRAL MANAGMENT SERVICES (COMMUNICATIONS)	X	X
VILLAGE OF MARYVILLE (WATER & SANITARY SEWER)		X
CITY OF TROY (WATER & SANITARY SEWER)		X

2. ALL TURF AREAS DISTURBED BY THE CONTRACTOR SHALL BE SEEDED WITH THE APPROPRIATE EROSION CONTROL, AS DIRECTED BY THE ENGINEER, AT THE CONTRACTOR'S EXPENSE.
3. THE DEPARTMENT STRONGLY ENCOURAGES THE PRIME CONTRACTOR AND THEIR APPROVED SUB-CONTRACTORS TO HIRE MINORITY, WOMEN AND DISADVANTAGED INDIVIDUALS FROM ITS FEDERALLY FUNDED HIGHWAY CONSTRUCTION CAREERS TRAINING PROGRAM (HCCTP) TO HELP MEET WORKFORCE AND TRAINEE GOALS. THIS PROGRAM IS TRAINING MINORITIES, WOMEN AND DISADVANTAGED INDIVIDUALS IN HIGHWAY CONSTRUCTION-RELATED SKILLS, E.G., MATH FOR THE TRADES, JOB READINESS, TECHNICAL SKILLS COURSEWORK (CARPENTRY, CONCRETE FLATWORK, BLUEPRINT READING, SITE PLANS, SITE WORK, TOOLS USE, ETC.) AND OSHA 10 HOUR CERTIFICATION, TO PREPARE THEM FOR A CAREER IN THE HIGHWAY CONSTRUCTION TRADES. GRADUATES ARE WELL-TRAINED AND READY TO BECOME PRODUCTIVE ENTRY-LEVEL CONSTRUCTION WORKERS. CONTACT THE DISTRICT 8 EEO OFFICE AT 618-346-3360 AND/OR THE HCCTP COORDINATOR AT 618-874-6528 TO LEARN MORE ABOUT THE PROGRAM AND FOR ASSISSTANCE IN MEETING WORKFORCE AND TRAINEE GOALS.
4. PATCHING IS NOT ANTICIPATED TO BE REQUIRED ON THE WEIGH SCALE, AT LOCATIONS WITH SIGNAL LOOPS, ALONG THE LOOP RAMP, OR IN THE PARKING AREAS.
5. ONE CHANGEABLE MESSAGE SIGN SHALL BE REQUIRED FOR THIS PROJECT, IT SHALL BE PLACED TWO WEEKS PRIOR TO ANY LANE CLOSURE. THE CHANGEABLE MESSAGE SIGN SHALL BE PLACED ALONG IL 55/70 OR AT THE DIRECTION OF THE ENGINEER.

## GENERAL NOTES (CONTINUED)

6. THE ENGINEER SHALL CONTACT KEITH DONOVAN, WEIGHT ENFORCEMENT ENGINEER, AT KEITH.DONOVAN@ILLINOIS.GOV OR 217-782-8414 A MINIMUM OF TWO (2) WEEKS PRIOR TO BEGINNING CONSTRUCTION.
7. THE RESIDENT ENGINEER SHALL VERIFY THE EXISTENCE OF HIGHWAY LIGHTING, INTELLIGENT TRANSPORTATION SYSTEMS (I.T.S.) UTILITIES, AND/OR ELECTRICAL CABLES ASSOCIATED WITH TRAFFIC SIGNALS WITHIN THE PROJECT LIMITS. IF ANY OF THESE EXIST WITHIN THE PROJECT LIMITS, AND IF THESE ITEMS REQUIRE LOCATING, THE CONTRACTOR SHALL BE DIRECTED TO DO SO ACCORDING TO SECTION 803 OF THE STANDARD SPECIFICATIONS. THIS WORK SHALL BE PAID FOR ACCORDING TO ARTICLE 109.04 OF THE STANDARD SPECIFICATIONS.
8. NO SURVEY WAS PERFORMED FOR THIS PROJECT AND THE PLANS WERE CREATED USING MICROFILM AND FIELD MEASUREMENTS.

## COMMITMENTS

NONE

REV. - MS

MODEL: General Notes (Sheet)  
FILE NAME: c:\pwworking\adlanee\jhd084622\0876R91-1shr.gennote.dgn

USER NAME = Joseph.Artean	DESIGNED - _____	REVISED - _____
	DRAWN - _____	REVISED - _____
PLOT SCALE = 0.16666633' / in.	CHECKED - _____	REVISED - _____
PLOT DATE = 10/16/2023	DATE - _____	REVISED - _____

STATE OF ILLINOIS  
DEPARTMENT OF TRANSPORTATION

INDEX OF SHEETS, HIGHWAY STANDARDS, GENERAL NOTES,  
& COMMITMENTS

SCALE: 1"=50' SHEET 1 OF 1 SHEETS STA. \_\_\_\_\_ TO STA. \_\_\_\_\_

F A I RTE.	SECTION	COUNTY	TOTAL SHEETS	SHEET NO.
55/70	60-BWS-1	MADISON	11	2
CONTRACT NO. 76R91				
ILLINOIS FED. AID PROJECT				

90% FED  
10% STATE

CONSTR. CODE

CODE NO.	ITEM	UNIT	TOTAL QUANTITY	ROADWAY	
				0044	URBAN
31200100	STABILIZED SUBBASE 4"	SQ YD	38.3	38.3	
40200900	AGGREGATE SURFACE COURSE, TYPE B	CU YD	0.5	0.5	
42000300	PORTLAND CEMENT CONCRETE PAVEMENT 8"	SQ YD	10.1	10.1	
42000500	PORTLAND CEMENT CONCRETE PAVEMENT 10"	SQ YD	28.2	28.2	
42101300	PROTECTIVE COAT	SQ YD	563	563	
42400100	PORTLAND CEMENT CONCRETE SIDEWALK 4 INCH	SQ FT	191	191	
44000100	PAVEMENT REMOVAL	SQ YD	61.1	61.1	
44000600	SIDEWALK REMOVAL	SQ FT	211	211	
44200050	WELDED WIRE REINFORCEMENT	SQ YD	893	893	
44200970	CLASS B PATCHES, TYPE II, 10 INCH	SQ YD	222	222	
44200974	CLASS B PATCHES, TYPE III, 10 INCH	SQ YD	103	103	
44200976	CLASS B PATCHES, TYPE IV, 10 INCH	SQ YD	790	790	
44201299	DOWEL BARS 1 1/2"	EACH	1204	1204	
44213200	SAWCUTS	FOOT	3403	3403	

90% FED  
10% STATE

CONSTR. CODE

CODE NO.	ITEM	UNIT	TOTAL QUANTITY	ROADWAY	
				0044	URBAN
44213204	TIE BARS 3/4"	EACH	163	163	
50101500	REMOVAL OF EXISTING SUPERSTRUCTURES	EACH	1	1	
50102400	CONCRETE REMOVAL	CU YD	20.4	20.4	
50300225	CONCRETE STRUCTURES	CU YD	29.3	29.3	
50301350	CONCRETE SUPERSTRUCTURE (APPROACH SLAB)	CU YD	5.2	5.2	
50500405	FURNISHING AND ERECTING STRUCTURAL STEEL	POUND	4220	4220	
50800205	REINFORCEMENT BARS, EPOXY COATED	POUND	4240	4240	
52000000	PREFORMED JOINT SEAL 1/2"	FOOT	225	225	
58600101	GRANULAR BACKFILL FOR STRUCTURES	CU YD	33.1	33.1	
59000200	EPOXY CRACK INJECTION	FOOT	14	14	
67000400	ENGINEER'S FIELD OFFICE, TYPE A	CAL MO	4	4	
67100100	MOBILIZATION	L SUM	1	1	
70100820	TRAFFIC CONTROL AND PROTECTION, STANDARD 701451	L SUM	1	1	
70107025	CHANGEABLE MESSAGE SIGN	CAL DA	14	14	

MODEL: SQO-1 [Sheet]  
FILE NAME: c:\p\work\p\work\lanee\p\084622\0876R91-1rht-SQO.dgn

REV. - MS

USER NAME = Joseph.Arteen	DESIGNED - _____	REVISED - _____
	DRAWN - _____	REVISED - _____
PLOT SCALE = 0.16666633 / in.	CHECKED - _____	REVISED - _____
PLOT DATE = 10/10/2023	DATE - _____	REVISED - _____

STATE OF ILLINOIS  
DEPARTMENT OF TRANSPORTATION

SUMMARY OF QUANTITIES

SCALE: 1"=50' SHEET 1 OF 2 SHEETS STA. \_\_\_\_\_ TO STA. \_\_\_\_\_

F.A.I. RTE.	SECTION	COUNTY	TOTAL SHEETS	SHEET NO.
55/70	60-BWS-1	MADISON	11	3
ILLINOIS   FED. AID PROJECT			CONTRACT NO. 76R91	

90% FED  
10% STATE

CODE NO.	ITEM	UNIT	TOTAL QUANTITY	CONSTR. CODE
				ROADWAY 0044 URBAN
* 78001110	PAINT PAVEMENT MARKING - LINE 4"	FOOT	1784	1784
∅ Z0076600	TRAINEES	HOUR	500	500
Z0012754	STRUCTURAL REPAIR OF CONCRETE (DEPTH EQUAL TO OR LESS THAN 5 INCHES)	SQ FT	9	9
∅ Z0076604	TRAINEES TRAINING PROGRAM GRADUATE	HOUR	500	500
Z0025710	FURNISHING AND INSTALLING STATIC SCALE COMPONENTS	L SUM	1	1

\* SPECIALTY ITEM

∅ 0042

MODEL: SQO-2 [Sheet]  
FILE NAME: c:\p\work\p\work\lanee\p\084622\0876R91-1sh-SQO.dgn

REV. - MS

USER NAME = Joseph.Arten	DESIGNED - _____	REVISED - _____	<b>STATE OF ILLINOIS DEPARTMENT OF TRANSPORTATION</b>	<b>SUMMARY OF QUANTITIES</b>	FAI RTE.	SECTION	COUNTY	TOTAL SHEETS	SHEET NO.
PLOT SCALE = 0.16666633 / in.	DRAWN - _____	REVISED - _____			55/70	60-BWS-1	MADISON	11	4
PLOT DATE = 10/4/2023	CHECKED - _____	REVISED - _____			CONTRACT NO. 76R91				
	DATE - _____	REVISED - _____			ILLINOIS   FED. AID PROJECT				
				SCALE: 1"=50'	SHEET 2 OF 2 SHEETS		STA. _____ TO STA. _____		







**GENERAL NOTES**

1. Calculated weight of Structural Steel = 4220 pounds
2. All structural steel shall be AASHTO M270 Grade 50 and shall be galvanized. See Special Provision for "Hot Dip Galvanizing for Structural Steel".
3. No field welding is permitted except as specified in the contract documents.
4. Reinforcement bars designated (E) shall be epoxy coated.
5. Plan dimensions and details relative to the existing structure have been taken from existing plans are subject to nominal construction variations. The Contactor shall field verify existing dimensions and details affecting new construction and make necessary approved adjustments prior to construction or ordering of materials. Such variations shall not be cause for additional compensation for a change in scope of the work, however, the Contractor will be paid for the quantity actually furnished at the unit price bid for the work.
6. Existing reinforcement shall be cleaned, straightened and incorporated into the new construction. Cost included with Concrete Removal.

**TOTAL BILL OF MATERIAL**

ITEM	UNIT	SUPER	SUB	TOTAL
Stabilized Subbase 4"	Sq. Yd.		38.3	38.3
Aggregate Surface Course, Type B	Cu. Yd.		0.5	0.5
Portland Cement Concrete Pavement, 8"	Sq. Yd.	10.1		10.1
Portland Cement Concrete Pavement, 10"	Sq. Yd.	28.2		28.2
Protective Coat	Sq. Yd.	124	439	563
Portland Cement Concrete Sidewalk, 4 Inch	Sq. Ft.	191		191
Pavement Removal	Sq. Yd.	61.1		61.1
Sidewalk Removal	Sq. Ft.	211		211
Removal of Existing Superstructures	Each	1		1
Concrete Removal	Cu. Yd.		20.4	20.4
Concrete Structures	Cu. Yd.		29.3	29.3
Concrete Superstructure (Approach Slab)	Cu. Yd.	5.2		5.2
Furnishing & Erecting Structural Steel	Pound		4220	4220
Reinforcement Bars, Epoxy Coated	Pound		4240	4240
Preformed Joint Seal, 1/2"	Foot	225		225
Granular Backfill for Structures	Cu. Yd.		33.1	33.1
Epoxy Crack Injection	Foot		14	14
Structural Repair of Concrete (Depth Equal to or Less Than 5 Inches)	Sq. Ft.		9	9
Furnishing and Installing Static Scale Components	L. Sum		1	1

**SCOPE OF WORK**

1. Remove existing concrete deck platform, the steel beam support structure, and weight scales.
2. Remove and replace 2'-6" depth of the East and West approach pit backwalls (remove and replace pavement and sidewalk as required by excavation).
3. Remove and replace the top 2'-0" of the North and South pit walls (remove and replace pavement and sidewalk as required by excavation).
4. Remove and replace a portion of the East and West approach pavement.
5. Install new concrete deck platform, steel beam support structure, and the new scale components.

**DESIGN SPECIFICATIONS**

2002 AASHTO Standard Specifications for Highway Bridges

**LOADING HS-20 (New Const.)**

No future wearing surface allowed

**DESIGN STRESSES**

FIELD UNITS (New Const.)

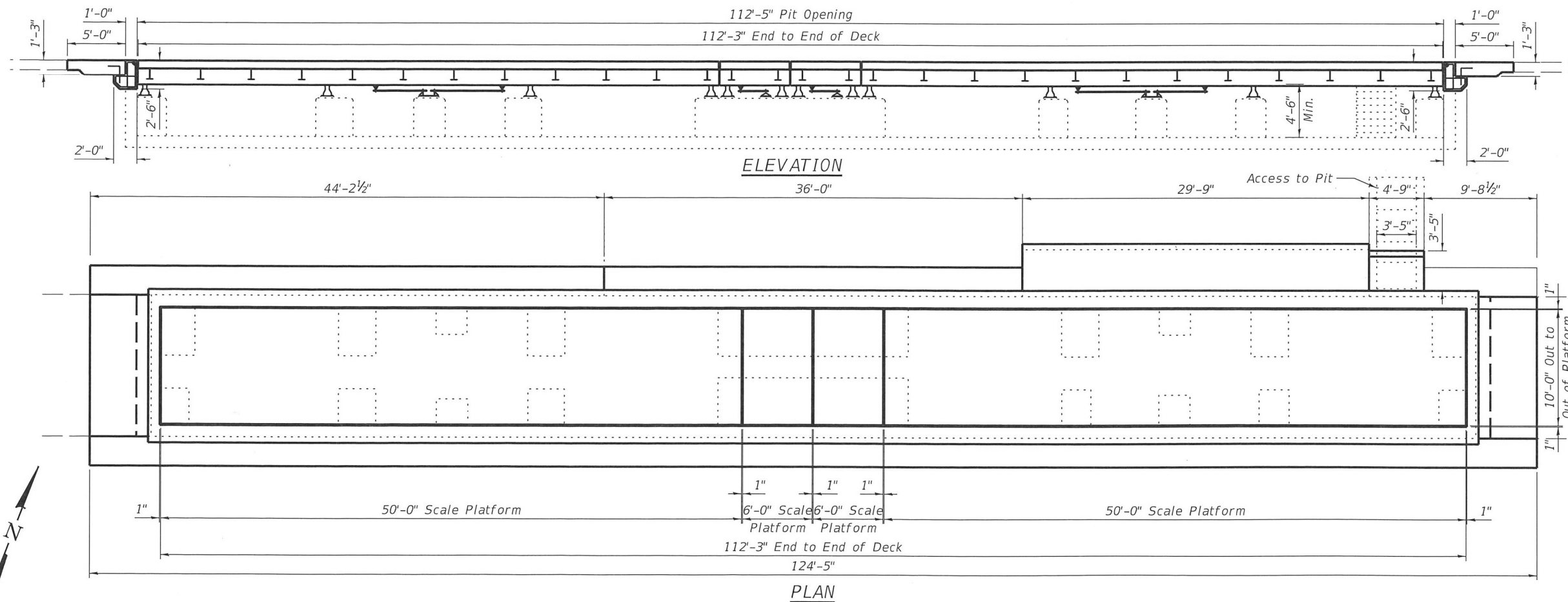
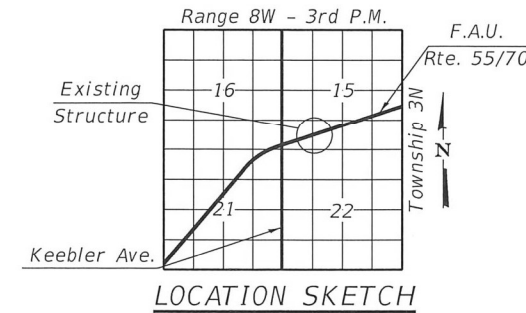
f'c = 4,000 psi  
 fy = 60,000 psi (reinforcement)  
 fy = 50,000 psi (structural steel)

FIELD UNITS (Exist. Const. 2004)

f'c = 3,500 psi (substructure)  
 fy = 60,000 psi (reinforcement)  
 fy = 50,000 psi (structural steel)

**INDEX OF SHEETS**

1. General Plan & Elevation
2. Removal Plan & Sections
3. Repair Plan & Sections
4. Repair Plan & Details



**GENERAL PLAN AND ELEVATION  
 I-55/I-70 WEIGH STATION  
 FAI 55/70  
 MADISON COUNTY**

MODEL: P:\19E3340-7\Design\Design\01 - General Plan and Elevation.dgn

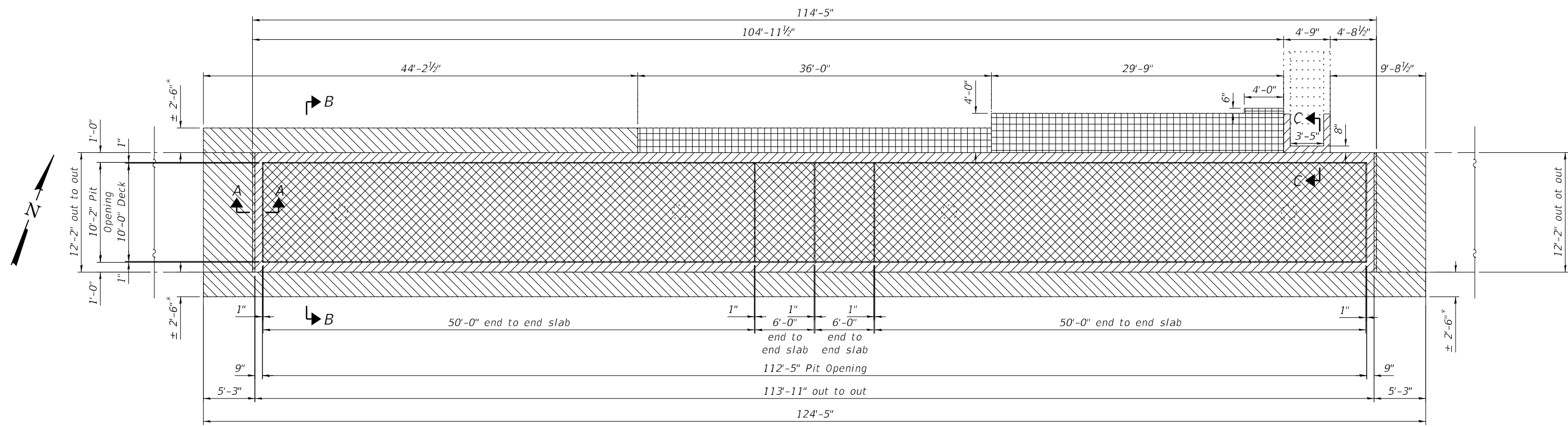


USER NAME = mhardy	DESIGNED - CML	REVISED -
PLOT SCALE = 0:2.0000" = 1" / in.	CHECKED - MBH	REVISED -
PLOT DATE = 11/16/2023	DRAWN - CML	REVISED -
	CHECKED - MBH	REVISED -

**STATE OF ILLINOIS  
 DEPARTMENT OF TRANSPORTATION**

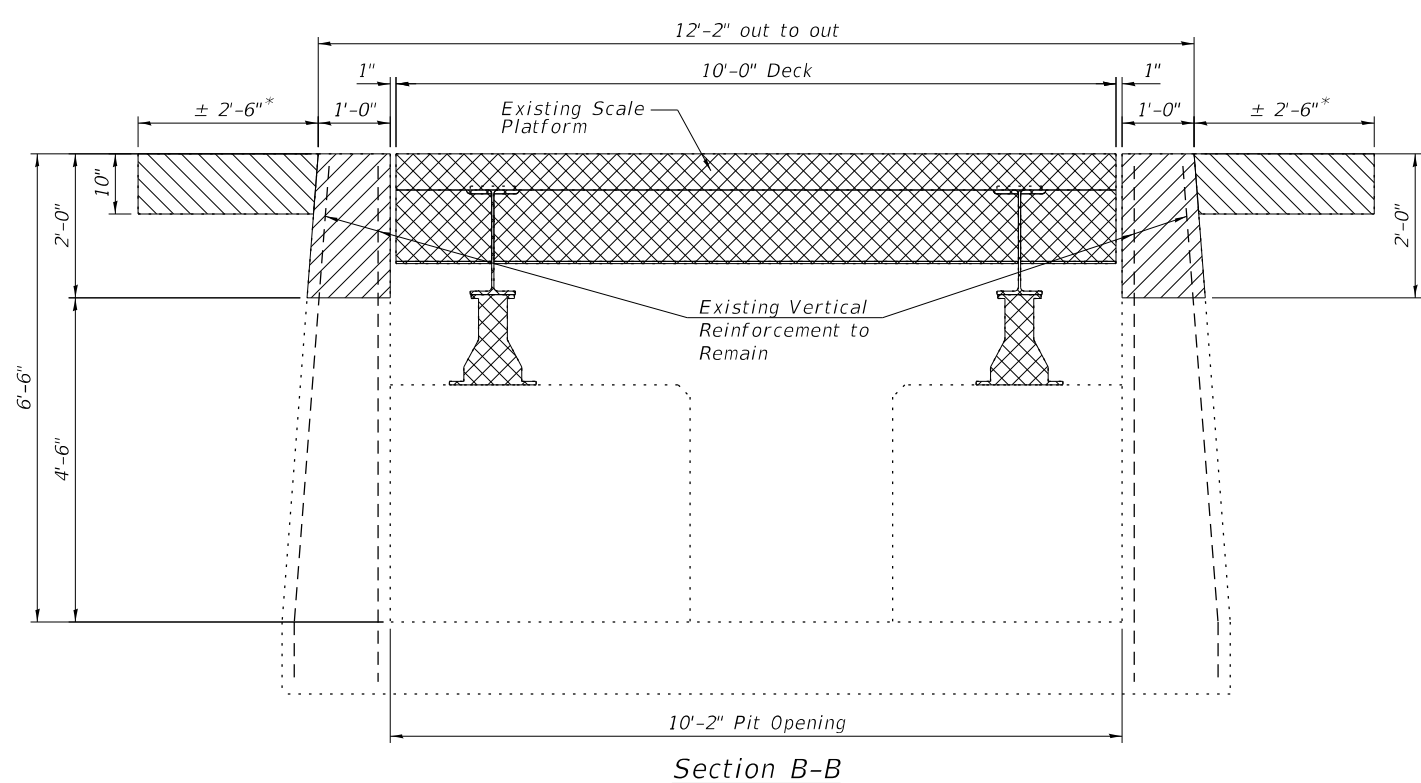
**GENERAL PLAN AND ELEVATION  
 I-55/I-70 MARYVILLE WEIGH STATION**

F.A.I. RTE. 55/70	SECTION 60-8WS-1	COUNTY MADISON	TOTAL SHEETS 11	SHEET NO. 7
ILLINOIS FED. AID PROJECT			CONTRACT NO. 76R91	

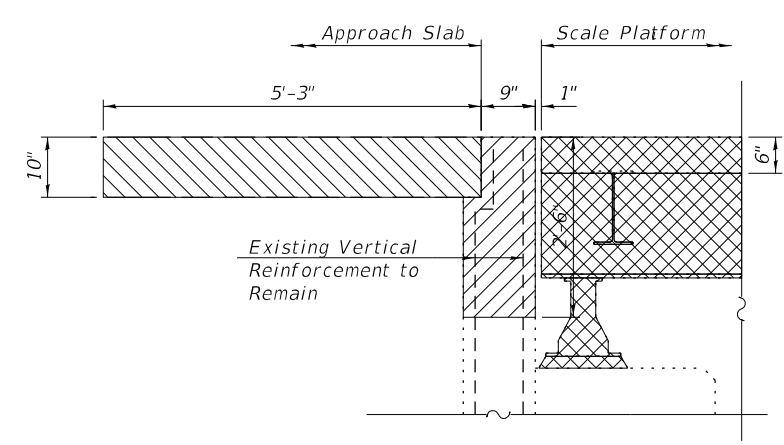


\* As Required by Excavation

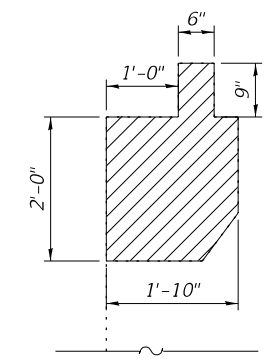
PLAN



Section B-B



Section A-A



Section C-C

LEGEND

- = Superstructure Removal
- = Concrete Removal
- = Pavement Removal
- = Sidewalk Removal

BILL OF MATERIALS

Item	Unit	Quantity
Removal of Existing Superstructures	Each	1
Concrete Removal	Cu. Yds.	20.4
Sidewalk Removal	Sq. Ft.	211
Pavement Removal	Sq. Yds.	61.1

Notes:  
The cost of any structure excavation shall be included with Concrete Removal.

STATE OF ILLINOIS  
DEPARTMENT OF TRANSPORTATION

REMOVAL PLAN AND SECTIONS  
I-55/I-70 MARYVILLE WEIGH STATION

SHEET 02 OF 04 SHEETS

F.A.I. RTE.	SECTION	COUNTY	TOTAL SHEETS	SHEET NO.
55/70	60-8WS-1	MADISON	11	8
CONTRACT NO. 76R91				
ILLINOIS FED. AID PROJECT				

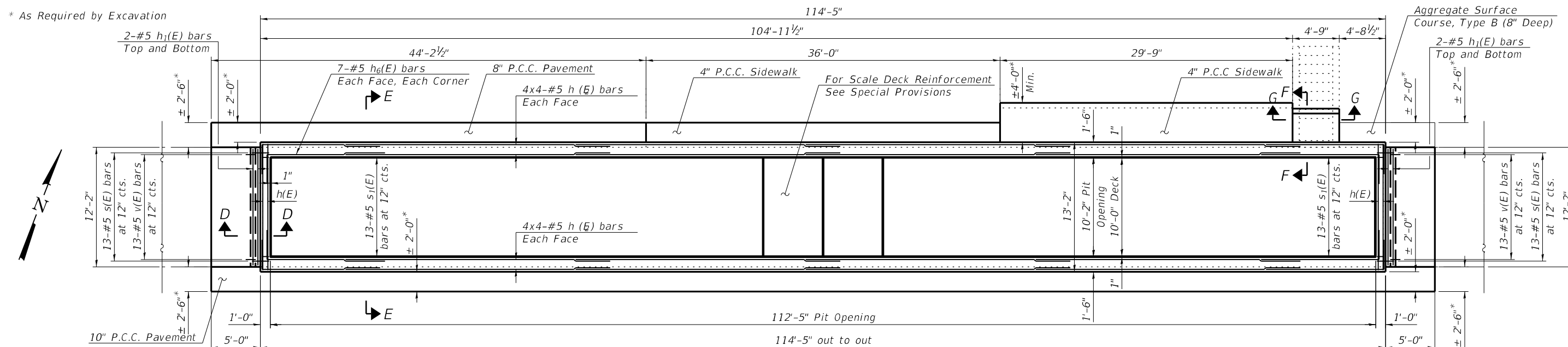
MODEL: P:\19E3340-7\Design\Design\02 - Removal Plan and Sections.dgn  
FILE NAME: P:\19E3340-7\Design\Design\02 - Removal Plan and Sections.dgn



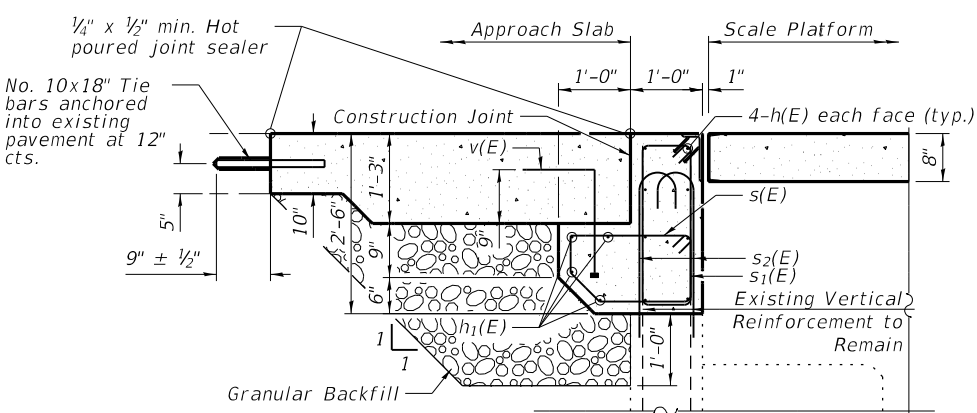
USER NAME = mhardy	DESIGNED - CML	REVISED - _____
PLOT SCALE = 0:2,0000 "/in.	CHECKED - MBH	REVISED - _____
PLOT DATE = 11/16/2023	DRAWN - CML	REVISED - _____
	CHECKED - MBH	REVISED - _____

11/16/2023 11:22:28 PM

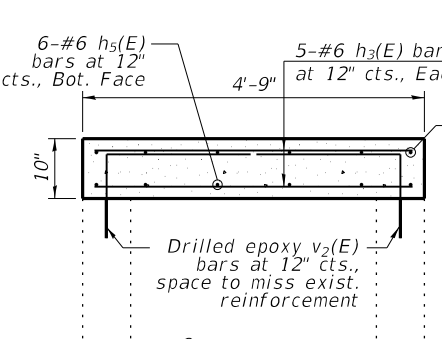
\* As Required by Excavation



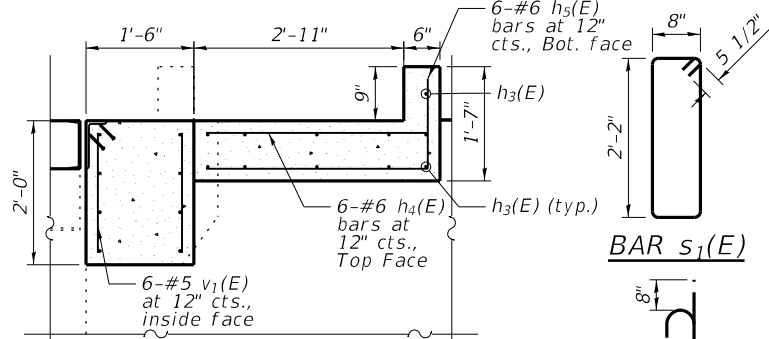
PLAN



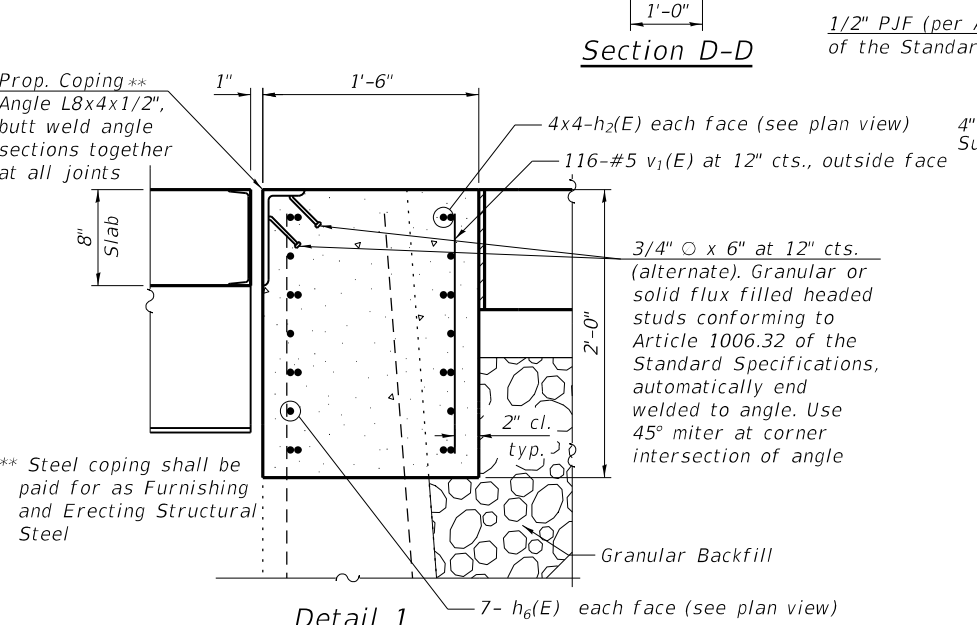
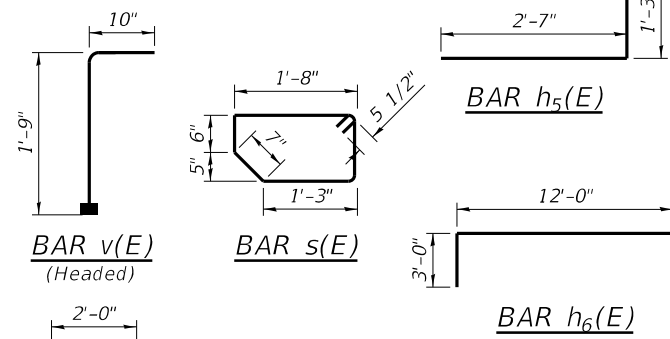
Section D-D



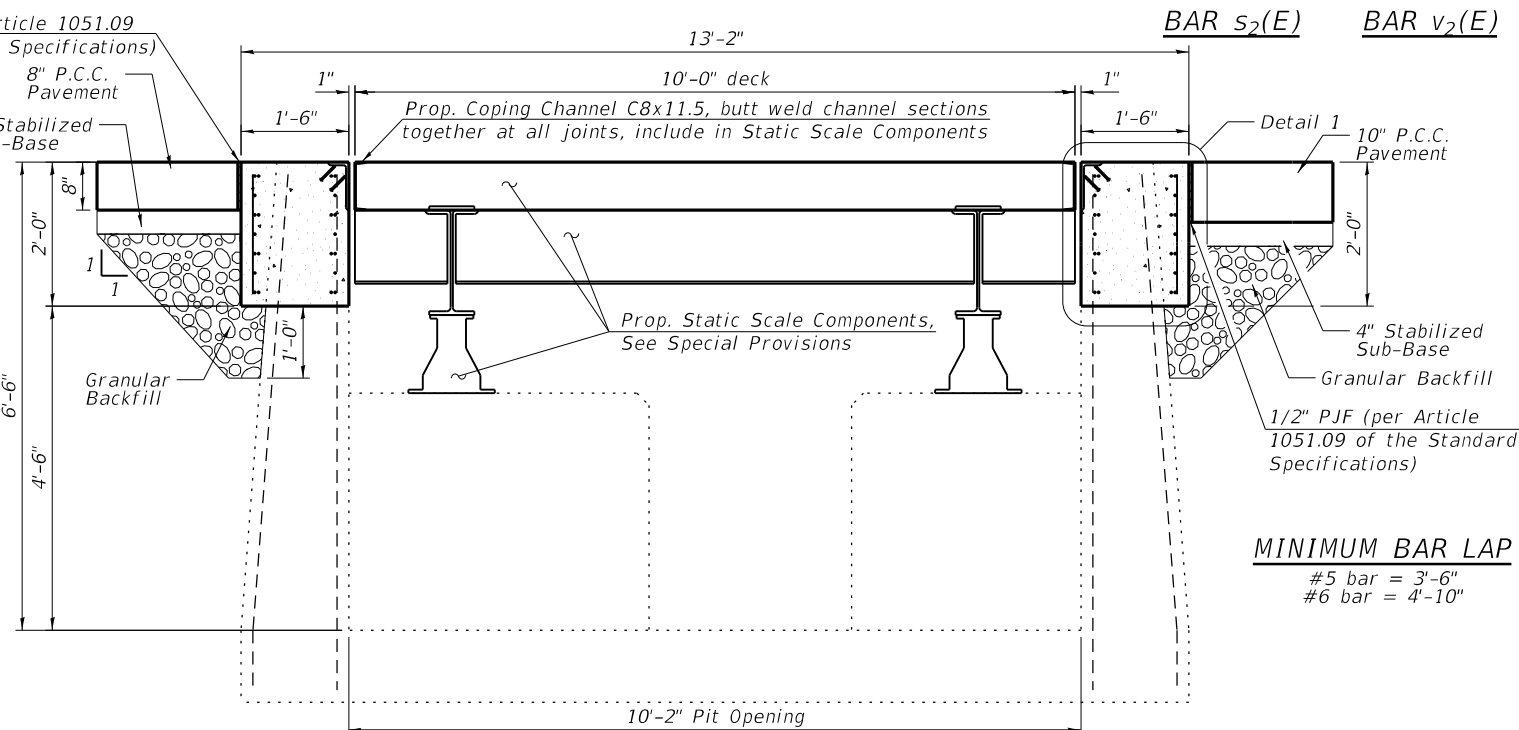
Section G-G



Section F-F



Detail 1



Section E-E

BILL OF MATERIALS

Bar	No.	Size	Length	Shape
h(E)	16	#5	13'-10"	—
h1(E)	8	#5	11'-10"	—
h2(E)	64	#5	26'-11"	—
h3(E)	11	#6	3'-1"	—
h4(E)	6	#6	2'-7"	—
h5(E)	6	#6	3'-10"	—
h6(E)	56	#5	15'-0"	—
s(E)	26	#5	4'-11"	—
s1(E)	26	#5	6'-7"	—
s2(E)	52	#6	3'-6"	—
v(E)	26	#5	2'-7"	—
v1(E)	238	#5	1'-8"	—
v2(E)	10	#6	3'-2"	—
Stabilized Subbase		Sq. Yd.	38.3	
Aggregate Surface Course, Type B		Cu. Yd.	0.5	
Portland Cement Concrete Sidewalk, 4 Inch		Sq. Ft.	191	
Concrete Structures		Cu. Yd.	29.3	
Concrete Superstructure (Approach Slab)		Cu. Yd.	5.2	
Furnishing and Erecting Structural Steel		Pound	4220	
Reinforcement Bars, Epoxy Coated		Lbs.	4240	
Granular Backfill for Structures		Cu. Yd.	33.1	

MINIMUM BAR LAP  
#5 bar = 3'-6"  
#6 bar = 4'-10"

Notes:  
Headed bars shall conform to ASTM A970 with threaded attachment; Class HA; and reinforcement bars conforming to ASTM A706. Cost included with Reinforcement Bars, Epoxy Coated  
Prior to Installation of new Scale Platforms a Protective Coat shall be applied to all interior concrete surfaces of the pit.  
The cost of Joint Sealer shall be included with Concrete Superstructure (Approach Slab).  
Bars indicated thus 20 x 3-#5 etc. indicates 20 lines of bars with 3 lengths per line.

STATE OF ILLINOIS  
DEPARTMENT OF TRANSPORTATION

REPAIR PLAN AND SECTIONS  
I-55/I-70 WEIGH STATION

SHEET 03 OF 04 SHEETS

F.A.I. RTE.	SECTION	COUNTY	TOTAL SHEETS	SHEET NO.
5570	60-8WS-1	MADISON	11	9

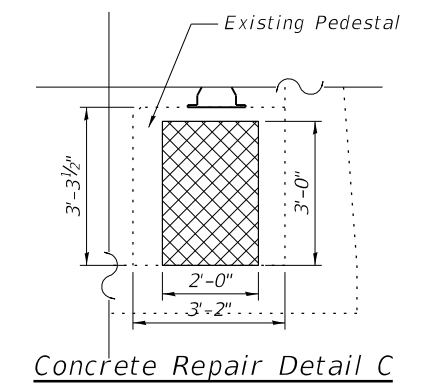
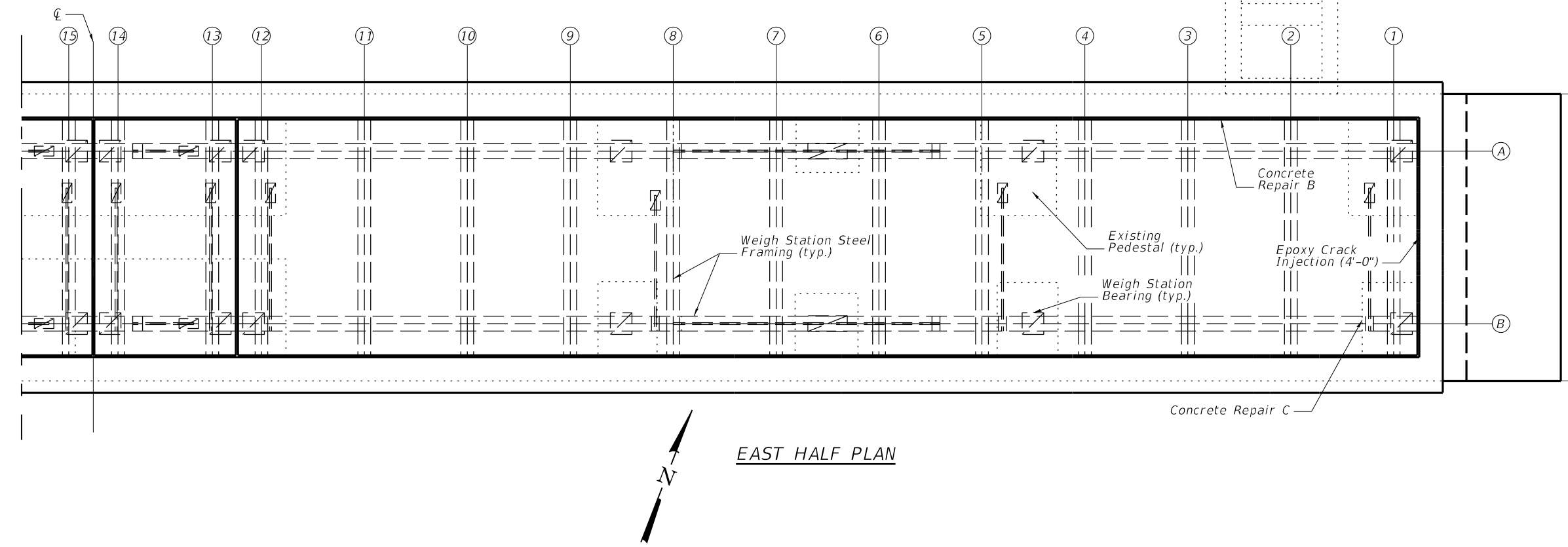
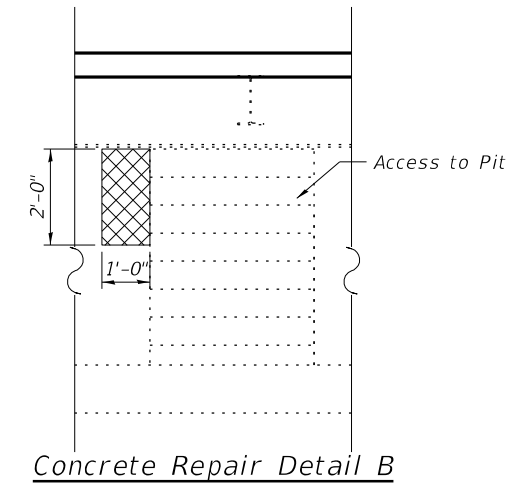
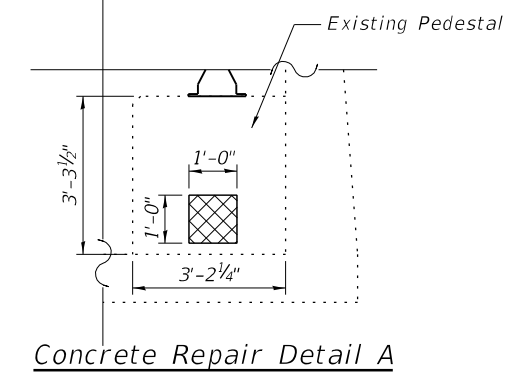
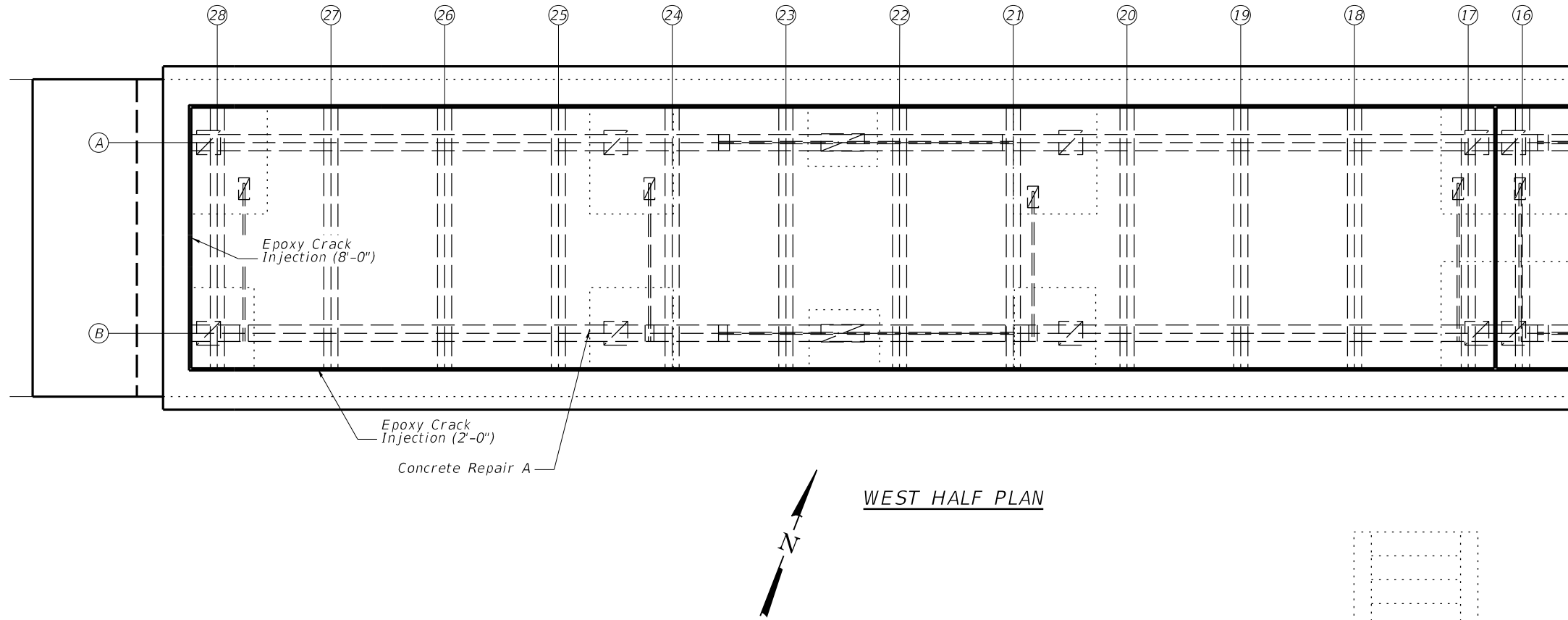
CONTRACT NO. 76R91  
ILLINOIS FED. AID PROJECT

MODEL: P:\19E3340-7\Design\Design03 - Repair Plan and Sections.dgn  
FILE NAME: P:\19E3340-7\Design\Design03 - Repair Plan and Sections.dgn

BENTON & ASSOCIATES, INC.  
310 W. Lafayette Ave., Joliet, IL 61780  
708.714.4444  
www.bentonassoc.com

USER NAME	DESIGNED	CHECKED	DRAWN	PLOT DATE	DESIGNED	CHECKED	DRAWN	PLOT DATE
mhardy	CML	MBH	CML	11/16/2023	CML	MBH	CML	11/16/2023

11/16/2023 10:53:26 PM



**LEGEND**  
 = Concrete Removal Limits

**BILL OF MATERIALS**

Item	Unit	Quantity
Epoxy Crack Injection	Foot	14
Structural Repair of Concrete (Depth Equal to or Less Than 5 Inches)	Sq. Ft.	9

MODEL: P:\19E3340-7\Design\Design\04 - Repair Plan.dgn



USER NAME = mhardy	DESIGNED - CML	REVISED -
	CHECKED - MBH	REVISED -
PLOT SCALE = 0:2.0000" = 1"	DRAWN - CML	REVISED -
PLOT DATE = 10/6/2023	CHECKED - MBH	REVISED -

**STATE OF ILLINOIS  
DEPARTMENT OF TRANSPORTATION**

**CONCRETE REPAIRS  
I-55/I-70 MARYVILLE WEIGH STATION**

SHEET 04 OF 04 SHEETS

F.A.I. RTE. 55/70	SECTION 60-8WS-1	COUNTY MADISON	TOTAL SHEETS 11	SHEET NO. 10
CONTRACT NO. 76R91				
ILLINOIS FED. AID PROJECT				

