

STATE OF ILLINOIS
DEPARTMENT OF TRANSPORTATION

F.A.S. RTE.	SECTION	COUNTY	TOTAL SHEETS	SHEET NO.
743	(53,54,55)PP	GREENE	7	1
		ILLINOIS	CONTRACT NO. 76T30	

FOR INDEX OF SHEETS, SEE SHEET NO. 2

**PROPOSED
HIGHWAY PLANS**

FAS ROUTE 743 (US 67)
SECTION (53,54,55)PP
PATCHING
GREENE COUNTY

C-98-102-23

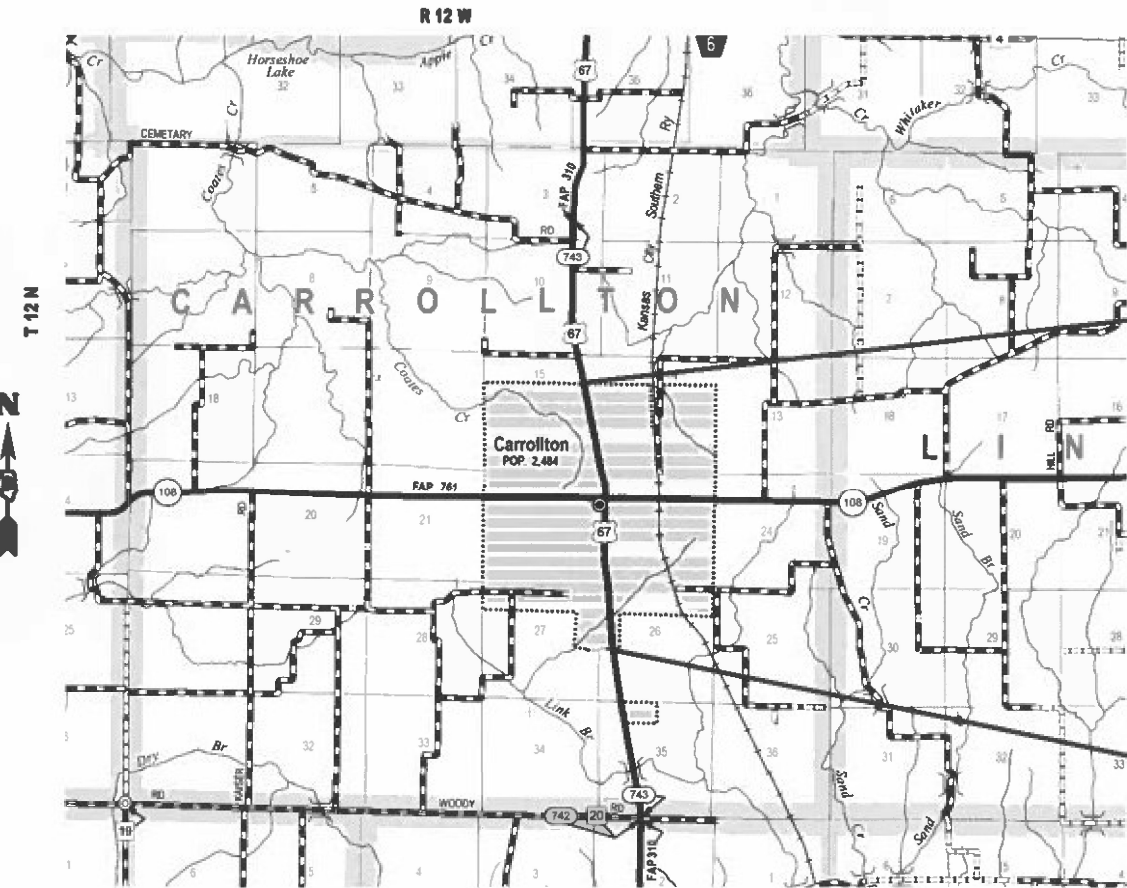
TRAFFIC DATA

2021: 5750(ACTUAL)
2024: 5850 (ESTIMATED)
2024: 6450(ESTIMATED)
SU = 6.1% MU = 5.2%



FULL SIZE PLANS HAVE BEEN PREPARED USING STANDARD ENGINEERING SCALES. REDUCED SIZED PLANS WILL NOT CONFORM TO STANDARD SCALES. IN MAKING MEASUREMENTS ON REDUCED PLANS, THE ABOVE SCALES MAY BE USED.

J.U.L.I.E.
JOINT UTILITY LOCATION INFORMATION FOR EXCAVATION
1-800-892-0123
OR 811



END PROJECT
STA. 716+64.00
LAT: 39.30823
LONG: -90.40887

BEGIN PROJECT
STA. 639+03.00
LAT: 39.28367
LONG: -90.40641

PROJECT ENGINEER: BILLIE OWEN
PROJECT MANAGER: MIKE BERG

CONTRACT NO. 76T30

GROSS LENGTH = 8,960 FT. = 1.70 MILE
NET LENGTH = 8,960 FT. = 1.70 MILE

STATE OF ILLINOIS
DEPARTMENT OF TRANSPORTATION

SUBMITTED OCTOBER 19 20 23
David H. Brown
REGIONAL ENGINEER

December 8, 2023
Steph A. Etk
ENGINEER OF DESIGN AND ENVIRONMENT

December 8, 2023
Stephen M. Smith
DIRECTOR OF HIGHWAYS PROJECT IMPLEMENTATION

**PRINTED BY THE AUTHORITY
OF THE STATE OF ILLINOIS**

CODE NO.	ITEM	UNIT	TOTAL QUANTITY	CONSTR. CODE	
				100% STATE	
				ROADWAY	
				0006	
				RURAL	
44213204	TIE BARS 3/4"	EACH	746		746
67100100	MOBILIZATION	L SUM	1		1
70102620	TRAFFIC CONTROL AND PROTECTION, STANDARD 701501	L SUM	1		1
70107025	CHANGEABLE MESSAGE SIGN	CAL DA	112		112
* 78001110	PAINT PAVEMENT MARKING - LINE 4"	FOOT	691		691
* 78100100	RAISED REFLECTIVE PAVEMENT MARKER	EACH	5		5
X4421398	CLASS C PATCHES, TYPE I, 14 INCH (SPECIAL)	SQ YD	22		22
X4421400	CLASS C PATCHES, TYPE II, 14 INCH (SPECIAL)	SQ YD	76		76
X4421407	CLASS C PATCHES, TYPE III, 14 INCH (SPECIAL)	SQ YD	18		18
Ø Z0076604	TRAINEES TRAINING PROGRAM GRADUATE	HOUR	500		500
X4421409	CLASS C PATCHES, TYPE IV, 14 INCH (SPECIAL)	SQ YD	345		345

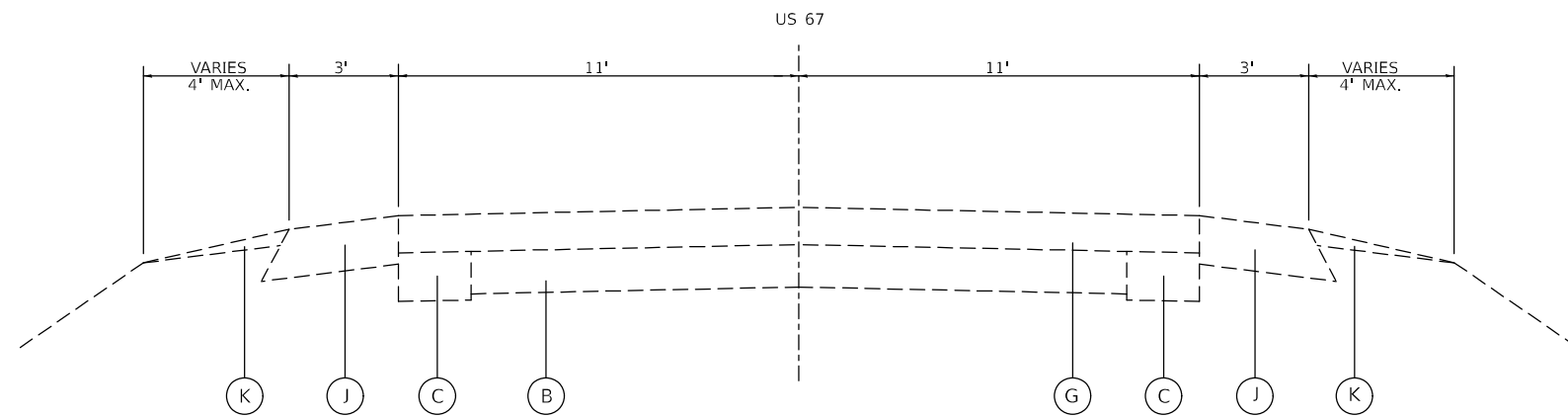
* SPECIALTY ITEM

Ø 0042

MODEL: User: s [Sheet] FILE NAME: p:\2023\p1\border.com\FW\DOT\Documents\DOT Office\District 8\ORD Project\2023\CA\DATA\CAD\Sheet\276130-141.dgn

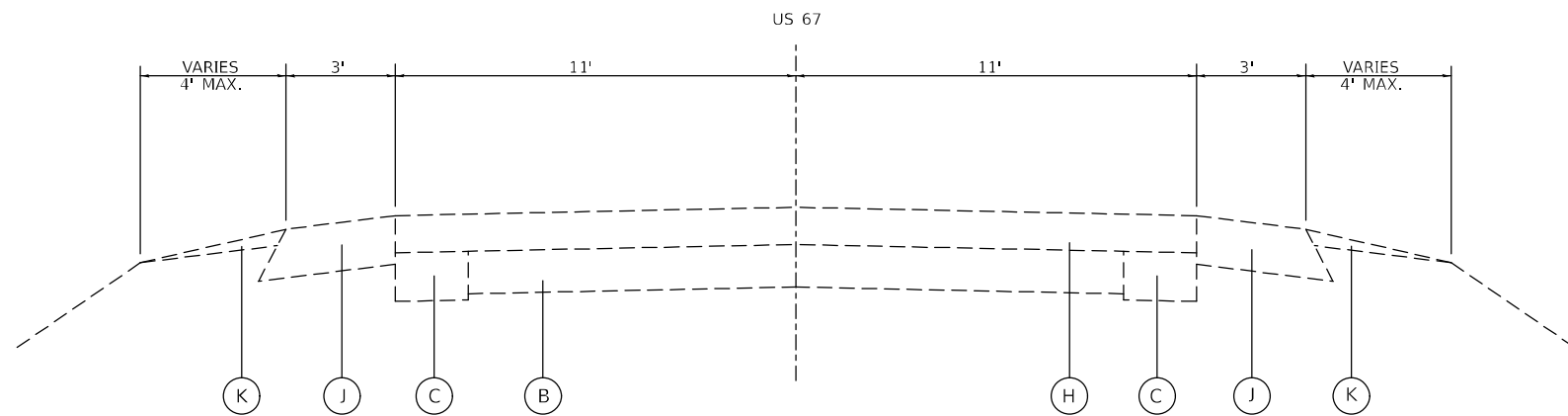
REV. - MS

USER NAME = Jon.Dintelman	DESIGNED -	REVISED -	STATE OF ILLINOIS DEPARTMENT OF TRANSPORTATION	SUMMARY OF QUANTITIES			F.A.S. RTE.	SECTION	COUNTY	TOTAL SHEETS	SHEET NO.
PLOT SCALE = 0.16666633 / in.	DRAWN -	REVISED -					743	(53,54,55)PP	GREENE	7	3
PLOT DATE = 10/24/2023	CHECKED -	REVISED -		SCALE: SHEET OF SHEETS STA. TO STA.			CONTRACT NO. 76T30				
	DATE -	REVISED -					ILLINOIS FED. AID PROJECT				



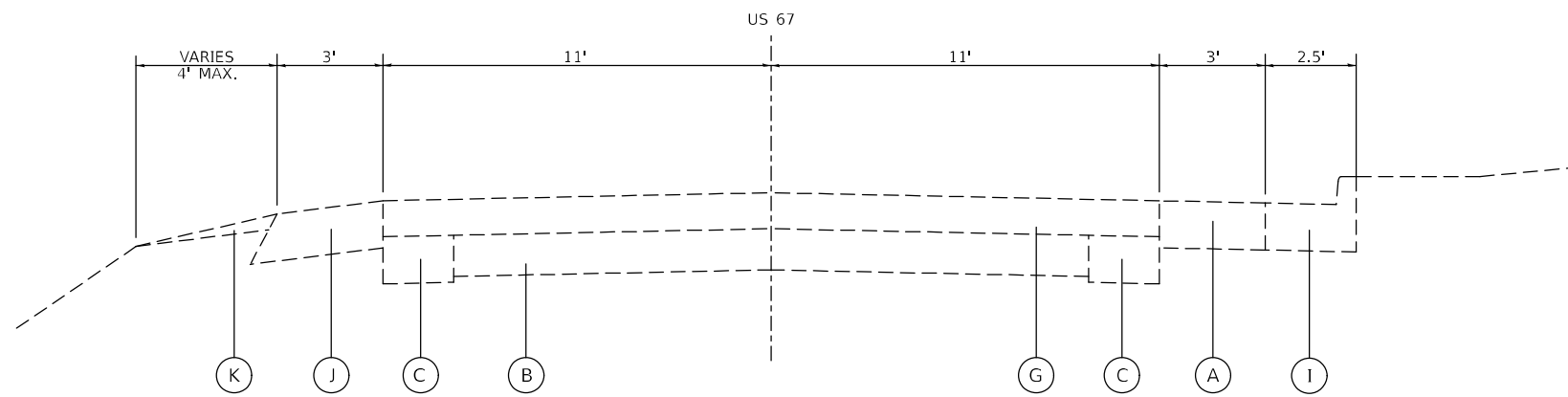
EXISTING TYPICAL SECTION

STA. 639+03.00 TO STA. 654+29.79
 STA. 656+56.17 TO STA. 659+48.16
 STA. 714+89.50 TO STA. 731+43.00



EXISTING TYPICAL SECTION

STA. 654+29.79 TO STA. 656+56.17



EXISTING TYPICAL SECTION

STA. 659+48.16 TO STA. 683+72.70

LEGEND

- (A) EXISTING P.C.C. PAVEMENT - 9"
- (B) EXISTING P.C.C. PAVEMENT - 7"
- (C) EXISTING P.C.C. WIDENING - 8"
- (D) EXISTING BRICK PAVEMENT
- (E) EXISTING HOT-MIX ASPHALT - 3 1/2"
- (F) EXISTING HOT-MIX ASPHALT - 5 1/2"
- (G) EXISTING HOT-MIX ASPHALT - 6"
- (H) EXISTING HOT-MIX ASPHALT - 7 1/2"
- (I) EXISTING CONCRETE CURB & GUTTER
- (J) EXISTING HOT-MIX ASPHALT SHOULDER - 8"
- (K) EXISTING AGGREGATE SHOULDER TYPE B

MODEL: Typical-1 (Sheet)
 FILE NAME: c:\p\work\wis\old\main\in\0894234\0894234.dwg\7130-shr-gennote.dgn

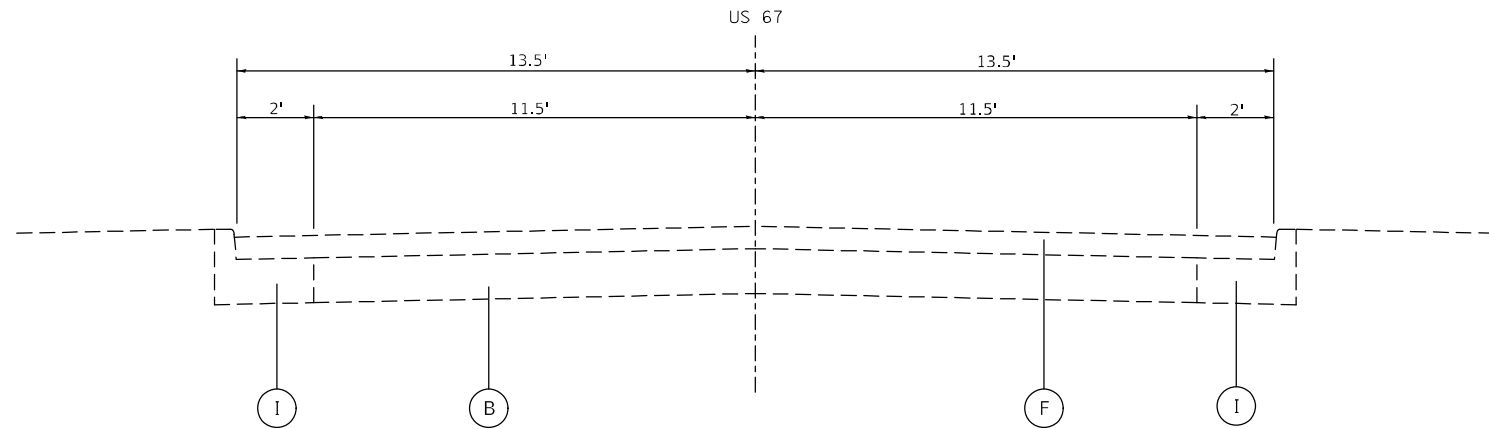
USER NAME = Jon.Dintelman	DESIGNED - _____	REVISED - _____
PLOT SCALE = 0.16666633' / in.	DRAWN - _____	REVISED - _____
PLOT DATE = 10/17/2023	CHECKED - _____	REVISED - _____
	DATE - _____	REVISED - _____

**STATE OF ILLINOIS
 DEPARTMENT OF TRANSPORTATION**

**EXISTING TYPICAL
 SECTIONS**

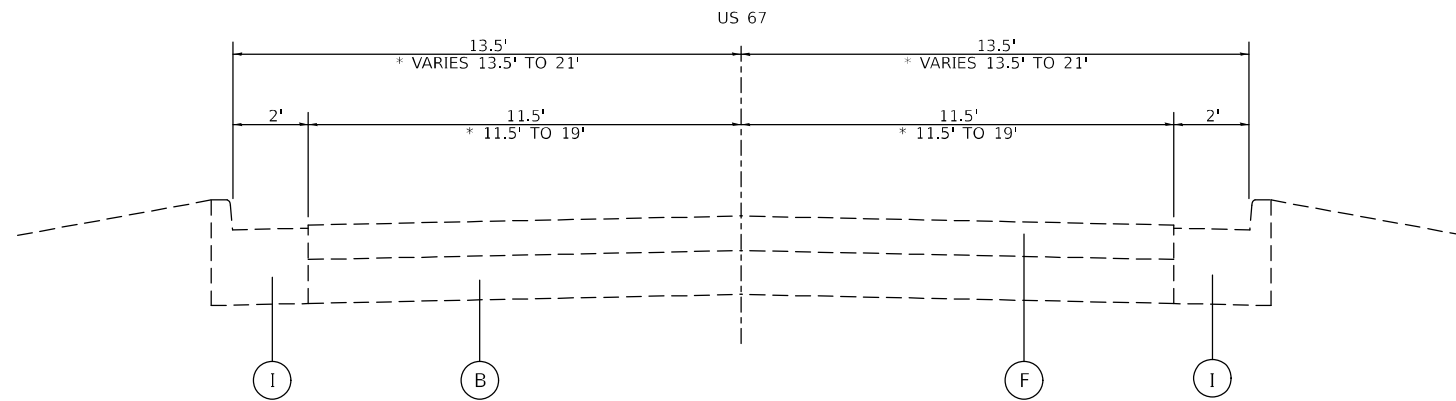
SCALE: _____ SHEET 1 OF 3 SHEETS STA. _____ TO STA. _____

F.A.S. RTE.	SECTION	COUNTY	TOTAL SHEETS	SHEET NO.
743	(63.54.55)PP	GREENE	7	4
CONTRACT NO. 76T30				
ILLINOIS FED. AID PROJECT				



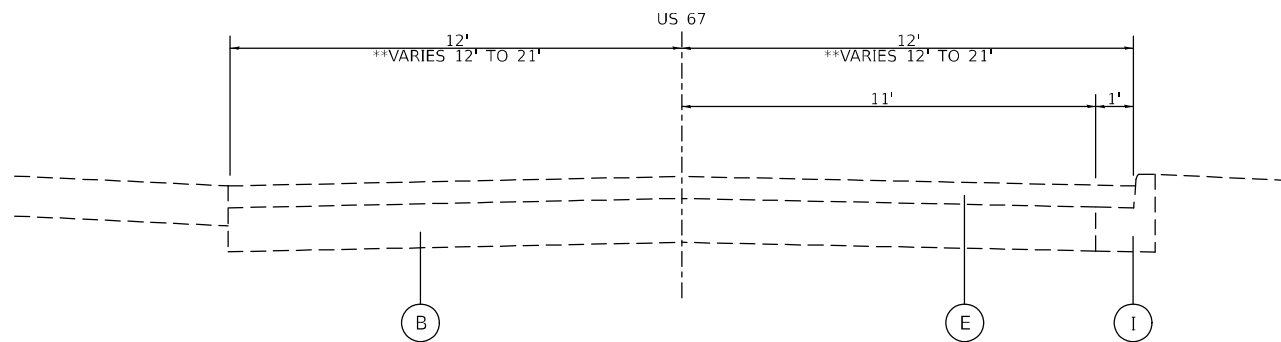
EXISTING TYPICAL SECTION

STA. 683+72.70 TO STA. 693+20.87



EXISTING TYPICAL SECTION

STA. 693+20.87 TO STA. 700+52.49
*STA. 700+52.49 TO STA. 701+64.04



EXISTING TYPICAL SECTION

**STA. 706+46.33 TO STA. 707+57.87
STA. 707+57.87 TO STA. 708+37.00

LEGEND

- (A) EXISTING P.C.C. PAVEMENT - 9"
- (B) EXISTING P.C.C. PAVEMENT - 7"
- (C) EXISTING P.C.C. WIDENING - 8"
- (D) EXISTING BRICK PAVEMENT
- (E) EXISTING HOT-MIX ASPHALT - 3 1/2"
- (F) EXISTING HOT-MIX ASPHALT - 5 1/2"
- (G) EXISTING HOT-MIX ASPHALT - 6"
- (H) EXISTING HOT-MIX ASPHALT - 7 1/2"
- (I) EXISTING CONCRETE CURB & GUTTER
- (J) EXISTING HOT-MIX ASPHALT SHOULDER - 8"
- (K) EXISTING AGGREGATE SHOULDER TYPE B

MODEL: Typical-2 (Sheet)
FILE NAME: c:\p\work\wis\oldintel\main\j\0894234\08761730-shl-gemnote.dgn

USER NAME = Jon.Dintelman	DESIGNED - _____	REVISED - _____
	DRAWN - _____	REVISED - _____
PLOT SCALE = 0.16666633' / in.	CHECKED - _____	REVISED - _____
PLOT DATE = 10/18/2023	DATE - _____	REVISED - _____

**STATE OF ILLINOIS
DEPARTMENT OF TRANSPORTATION**

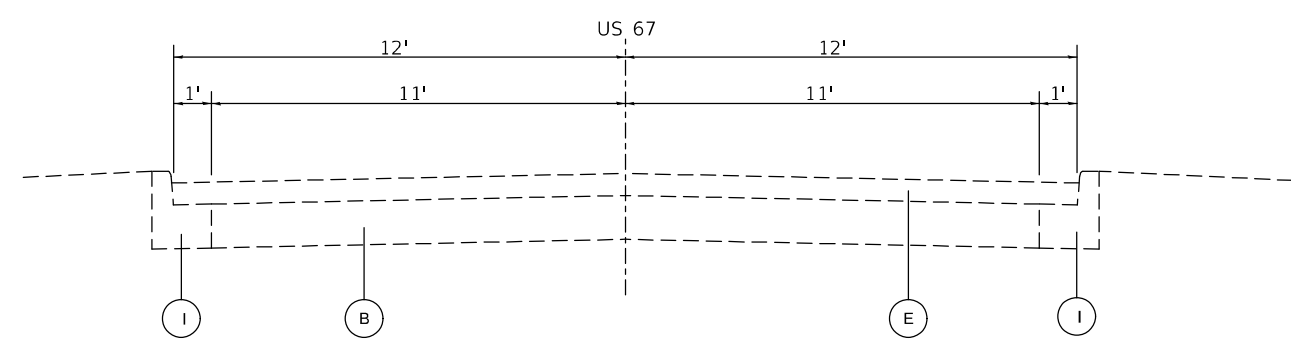
**EXISTING TYPICAL
SECTIONS**

SCALE: _____ SHEET 2 OF 3 SHEETS STA. _____ TO STA. _____

F.A.S. RTE.	SECTION	COUNTY	TOTAL SHEETS	SHEET NO.
743	(63.54.55)PP	GREENE	7	5
CONTRACT NO. 76T30				
ILLINOIS FED. AID PROJECT				

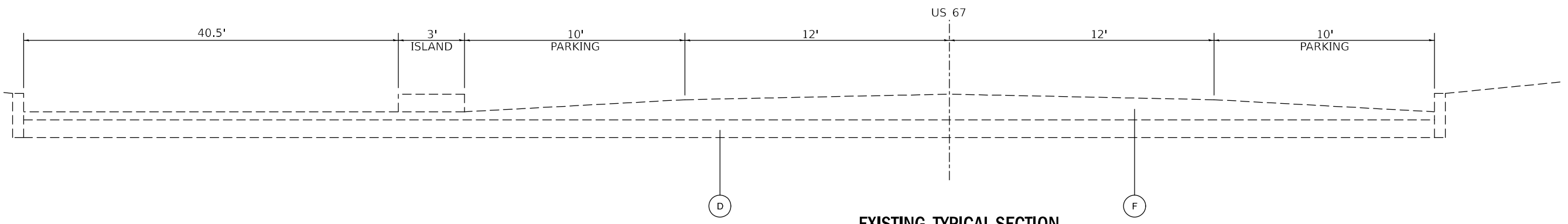
LEGEND

- (A) EXISTING P.C.C. PAVEMENT - 9"
- (B) EXISTING P.C.C. PAVEMENT - 7"
- (C) EXISTING P.C.C. WIDENING - 8"
- (D) EXISTING BRICK PAVEMENT
- (E) EXISTING HOT-MIX ASPHALT - 3 1/2"
- (F) EXISTING HOT-MIX ASPHALT - 5 1/2"
- (G) EXISTING HOT-MIX ASPHALT - 6"
- (H) EXISTING HOT-MIX ASPHALT - 7 1/2"
- (I) EXISTING CONCRETE CURB & GUTTER
- (J) EXISTING HOT-MIX ASPHALT SHOULDER - 8"
- (K) EXISTING AGGREGATE SHOULDER TYPE B



EXISTING TYPICAL SECTION

STA. 708+37.00 TO STA. 714+89.50
 STA. 708+37.00 TO STA. 714+89.50



EXISTING TYPICAL SECTION

STA. 701+64.04 TO STA. 706+46.33

MODEL: Typical-5 (Sheet)
 FILE NAME: c:\p\work\wis\civil\intel\main\in\0894234\ID876730-shl-gemnote.dgn

USER NAME = Jon.Dintelman	DESIGNED - _____	REVISED - _____
	DRAWN - _____	REVISED - _____
PLOT SCALE = 0.16666633' / in.	CHECKED - _____	REVISED - _____
PLOT DATE = 10/17/2023	DATE - _____	REVISED - _____

**STATE OF ILLINOIS
 DEPARTMENT OF TRANSPORTATION**

**EXISTING TYPICAL
 SECTIONS**

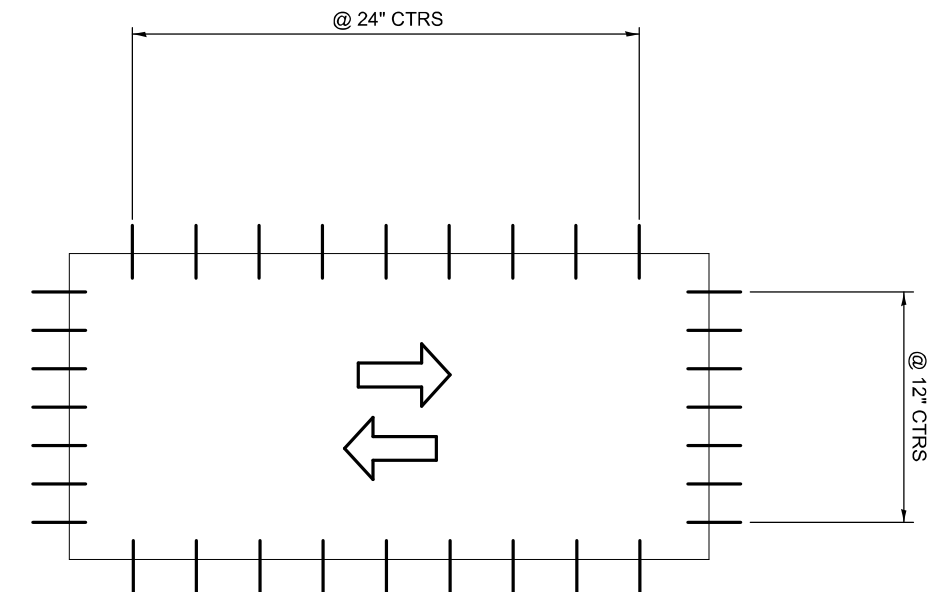
SCALE: _____ SHEET 3 OF 3 SHEETS STA. _____ TO STA. _____

F.A.S. RTE.	SECTION	COUNTY	TOTAL SHEETS	SHEET NO.
743	(53.54.55)PP	GREENE	7	6
ILLINOIS FED. AID PROJECT			CONTRACT NO. 76T30	

PATCHING SCHEDULE

CLASS C PATCHES 14" (SPECIAL)											TIE BARS 3/4" (EACH)	PAINT PVT MARKING LINE 4" (FOOT)	
STATION	MILE PT.	STREET	NB/SB	LENGTH	WIDTH	AREA (SQ YD)	TYPE I (SQ YD)	TYPE II (SQ YD)	TYPE III (SQ YD)	TYPE IV (SQ YD)			
639+03	0.00	Ponderosa											
654+87	0.30	Teresa											
665+43	0.50	Cemetary											
665+43	0.50		SB	6.0	6.0	4.0	4.0				12	6	
670+71	0.60		SB	6.0	6.0	4.0	4.0				12	6	
673+35	0.65	Virginia											
675+99	0.70		SB	6.0	12.0	8.0		8.0			18	12	
681+27	0.80	Pine											
683+91	0.85	School	NB	6.0	12.0	8.0		8.0			18	12	
683+91	0.85	School	SB	6.0	6.0	4.0	4.0				12	6	
684+96	0.87		NB	50.0	6.0	33.3				33.3	56	50	
684+96	0.87		SB	40.0	6.0	26.7				26.7	46	40	
685+49	0.88		SB	8.0	6.0	5.3		5.3			14	8	
686+55	0.90		NB	8.0	6.0	5.3		5.3			14	8	
687+08	0.91		NB	8.0	6.0	5.3		5.3			14	8	
689+19	0.95		SB	6.0	6.0	4.0	4.0				12	6	
689+72	0.96	Sycamore											
690+24	0.97		SB	6.0	12.0	8.0		8.0			18	12	
691+83	1.00		SB	50.0	6.0	33.3				33.3	56	50	
692+88	1.02	Maple											
694+47	1.05		SB	6.0	12.0	8.0		8.0			18	12	
694+47	1.05		NB	6.0	12.0	8.0		8.0			18	12	
697+11	1.10	Locust											
698+16	1.12		SB	40.0	6.0	26.7				26.7	46	40	
702+39	1.20	S. Main											
703+97	1.23	IL 108											
704+50	1.24		NB	12.0	6.0	8.0		8.0			18	12	
707+67	1.30		NB	70.0	12.0	93.3				93.3	82	140	
707+67	1.30		SB	6.0	6.0	4.0	4.0				12	6	
710+84	1.36		SB	12.0	12.0	16.0			16.0		24	24	
710+84	1.36	Church											
711+36	1.37		SB	30.0	12.0	40.0				40.0	42	60	
712+42	1.39		SB	8.0	6.0	5.3		5.3			14	8	
712+95	1.40		SB	40.0	6.0	26.7				26.7	46	40	
712+95	1.40		NB	50.0	6.0	33.3				33.3	56	50	
716+64	1.47	Walnut											
731+43	1.75	Sixth St											
SUB-TOTAL								20	69	16	313	678	628
10% FOR ANTICIPATED FAILURES								2	7	2	31	68	63
GRAND TOTAL								22	76	18	345	746	691

NOTE: A QUANTITY OF 5 RAISED REFLECTIVE PAVEMENT MARKERS HAS BEEN INCLUDED IN THE PLANS TO REPLACE ANY MISSING MARKERS OR THOSE THAT ARE DISTURBED IN PATCHING OPERATIONS



TIE BAR PLAN
(TIE BARS WILL NOT BE USED AGAINST PAVED SHOULDER)

MODEL: Schedules (Sheet)
FILE NAME: c:\p\work\ford\intelman\j\0894234\0876130-shl-gemnote.dgn

USER NAME = Jon.Dintelman	DESIGNED - _____	REVISED - _____
	DRAWN - _____	REVISED - _____
PLOT SCALE = 0.16666633' / in.	CHECKED - _____	REVISED - _____
PLOT DATE = 10/17/2023	DATE - _____	REVISED - _____

**STATE OF ILLINOIS
DEPARTMENT OF TRANSPORTATION**

**CLASS C PATCHES (SPECIAL)
SCHEDULE & DETAIL SHEET**

SCALE: _____ SHEET 1 OF 1 SHEETS STA. _____ TO STA. _____

F.A.S. RTE.	SECTION	COUNTY	TOTAL SHEETS	SHEET NO.
743	(53,54,55)PP	GREENE	7	7
CONTRACT NO. 76T30				
ILLINOIS FED. AID PROJECT				