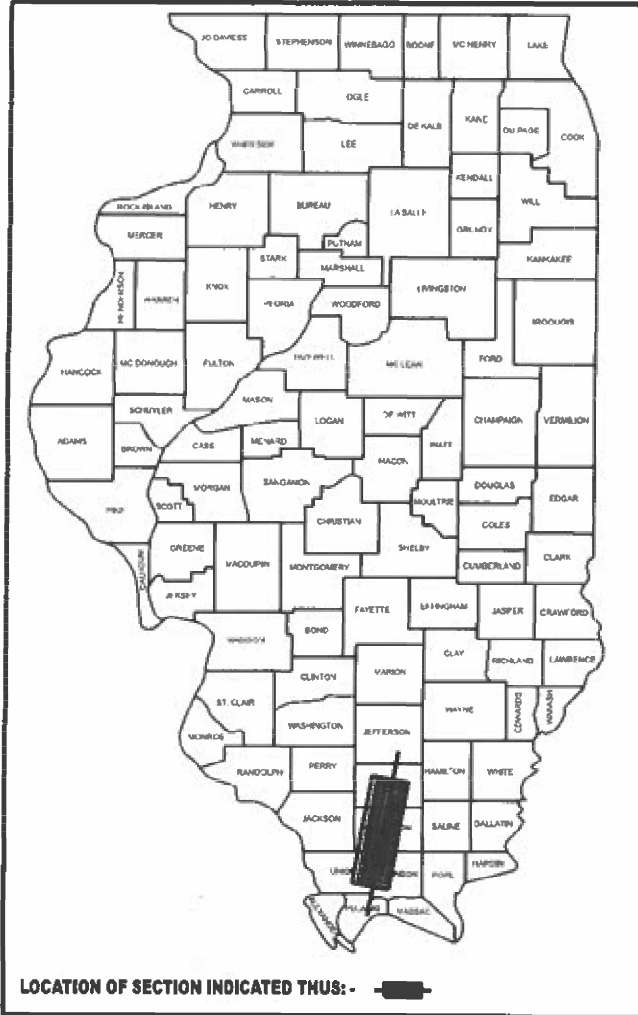


STATE OF ILLINOIS
DEPARTMENT OF TRANSPORTATION

F.A.I. RTE.	SECTION	COUNTY	TOTAL SHEETS	SHEET NO.
24/57	D9 WEED SPRAY 2024-1	VARIOUS	11	1
		ILLINOIS	CONTRACT NO. 78A48	

FAI 24/FAI 57

D-99-027-24



**PROPOSED
HIGHWAY PLANS**

**FAI 24 (I-24) & FAI 57 (I-57)
SECTION D9 WEED SPRAY 2024-1
PROJECT 78A48
WEED SPRAYING
VARIOUS COUNTY**

**FOR INDEX OF SHEETS, SEE SHEET NO. 3
FOR SUMMARY OF QUANTITIES, SEE SHEET NO. 4**

LOCATION #6 I-57

**MP 62.1 TO EXIT 65 WITH INFIELDS
(FRANKLIN/WILLIAMSON COUNTY LINE
TO I-57)**

C-99-056-24

LOCATION #7 I-57

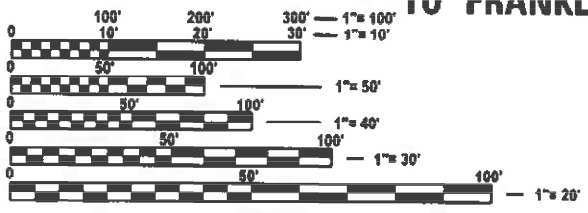
**STR 028-0053 TO
FRANKLIN/JEFFERSON COUNTY LINE**

LOCATION #4 I-57

**EXIT 44 WITH INFIELDS TO MP 62.1
(WILLIAMSON/JOHNSON COUNTY LINE
TO FRANKLIN/WILLIAMSON COUNTY LINE)**

LOCATION #5 I-24

**MP 0 TO MP 1.6
(I-57 TO WILLIAMSON/JOHNSON COUNTY LINE)**



FULL SIZE PLANS HAVE BEEN PREPARED USING STANDARD ENGINEERING SCALES. REDUCED SIZED PLANS WILL NOT CONFORM TO STANDARD SCALES. IN MAKING MEASUREMENTS ON REDUCED PLANS, THE ABOVE SCALES MAY BE USED.

**J.U.L.I.E.
JOINT UTILITY LOCATION INFORMATION FOR EXCAVATION
1-800-892-0123
OR 811**

LOCATION #3 I-57

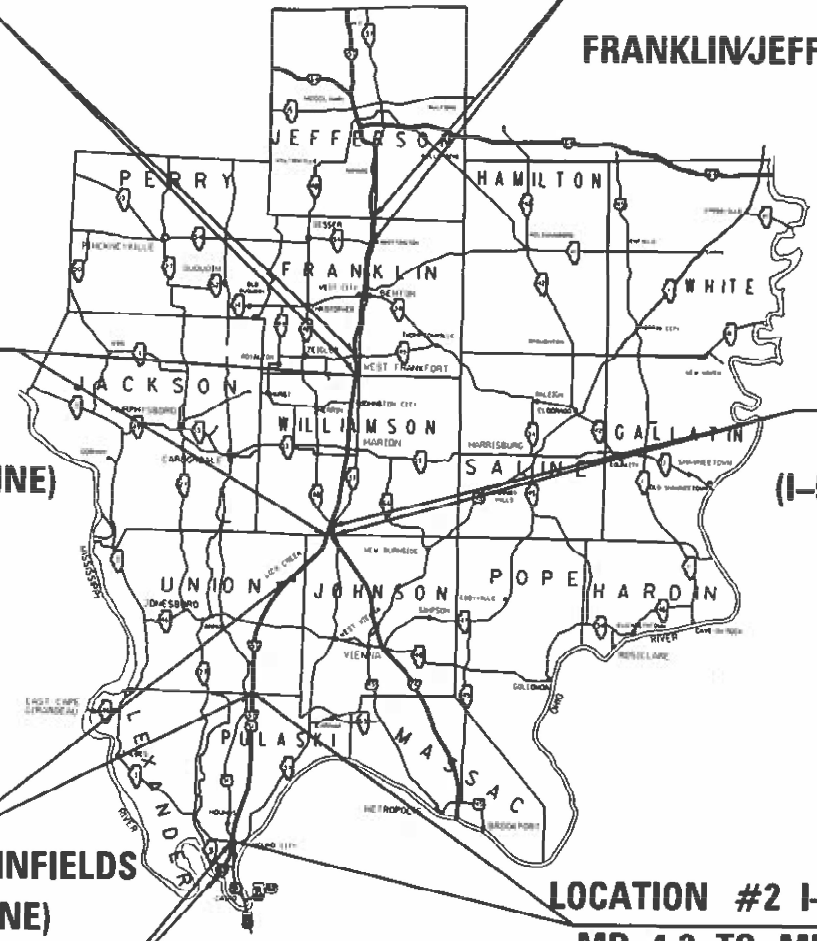
**MP 22 TO EXIT 30 WITH INFIELDS
(UNION/PULASKI COUNTY LINE)**

LOCATION #2 I-57

**MP 4.3 TO MP 22
PULASKI/ALEXANDER COUNTY LINE)**

LOCATION #1 I-57

MP 1 TO MP 4.3



**PROJECT ENGINEER: SEAN GREENLEE
PROJECT MANAGER: DACODA BLOCKLEY**

CONTRACT NO. 78A48

STATE OF ILLINOIS
DEPARTMENT OF TRANSPORTATION

SUBMITTED Oct 23 20 23
Kirk H. Braun
REGIONAL ENGINEER

December 8, 2023
[Signature]
ENGINEER OF DESIGN AND ENVIRONMENT

December 8, 2023
[Signature]
DIRECTOR OF HIGHWAYS PROJECT IMPLEMENTATION

**PRINTED BY THE AUTHORITY
OF THE STATE OF ILLINOIS**

INDEX OF SHEETS

SHEET NO	DESCRIPTION
1	COVER SHEET
2	SIGNATURE SHEET
3	INDEX OF SHEETS, HIGHWAY STANDARDS
4	SUMMARY OF QUANTITIES
5	SCHEDULE OF QUANTITIES
6	SCHEDULE OF ROUTES AND SPRAY MIXTURES
7	ALEXANDER COUNTY LOCATION MAP
8	PULASKI COUNTY LOCATION MAP
9	UNION COUNTY LOCATION MAP
10	WILLIAMSON COUNTY LOCATION MAP
11	FRANKLIN COUNTY LOCATION MAP

HIGHWAY STANDARDS

- 000001-08 STANDARD SYMBOLS, ABBREVIATIONS AND PATTERNS
- 001006 DECIMAL OF AN INCH AND OF A FOOT
- 701101-05 OFFRDOP-MULTILN-LESSTHAN15FTTOEOP
- 701106-02 OFFRDOP-MULTILN-MORETHAN15FTAWAY
- 701426-09 LNCLOSUREMULTILN-INTERMITTANTORMOVINGOP45MPHORMORE
- 701901-09 TRAFCNTRLDEVICES

REV. - MS

MODEL: INDEXENOTES (Sheet)
 FILE NAME: c:\pwworking\illinois.gov\dacoda.blockley\022509\0978A48-SHB-Index_GenNotes.dgn

USER NAME =	Dacoda.Blockley	DESIGNED -	REVISOR -
		DRAWN -	REVISION -
PLOT SCALE =	0.16666633 / in.	CHECKED -	REVISION -
PLOT DATE =	10/5/2023	DATE -	REVISION -

STATE OF ILLINOIS
DEPARTMENT OF TRANSPORTATION

INDEX AND HIGHWAY STANDARDS

SCALE: 1"=60' SHEET 3 OF 11 SHEETS STA. TO STA.

F.A.I. RTE.	SECTION	COUNTY	TOTAL SHEETS	SHEET NO.
24/57	D9 WEED SPRAY 2024-1	VARIOUS	11	3
			CONTRACT NO. 78A48	

ILLINOIS FED. AID PROJECT

SUMMARY OF QUANTITIES

CODE NUMBER	ITEM DESCRIPTION	UNIT	VARIOUS
			FAI 24/FAI57
			100% STATE
			RURAL
			ROADWAY
			0031
67100100	MOBILIZATION	L SUM	1
X0325681	NON-IONIC SURFACTANT	GALLON	137
X0325947	MILESTONE	GALLON	82
X2000002	VASTLAN	GALLON	328

MODEL: SOQ (Sheet)
 FILE NAME: c:\p\work\project\illinois.gov_dacoda.blockley@d978A48-SHC-SoQ-Schedule.dgn

USER NAME = Dacoda.Blockley PLOT SCALE = 0.16666633' / in. PLOT DATE = 10/17/2023	DESIGNED - DRAWN - CHECKED - DATE -	REVISED - REVISED - REVISED - REVISED -	STATE OF ILLINOIS DEPARTMENT OF TRANSPORTATION	SUMMARY OF QUANTITIES	SCALE: 1"=50' SHEET 4 OF 11 SHEETS STA. TO STA.	<table border="1" style="width: 100%; border-collapse: collapse;"> <tr> <th>F.A.I RTE.</th> <th>SECTION</th> <th>COUNTY</th> <th>TOTAL SHEETS</th> <th>SHEET NO.</th> </tr> <tr> <td>24/57</td> <td>D9 WEED SPRAY 2024-1</td> <td>VARIOUS</td> <td style="text-align: center;">11</td> <td style="text-align: center;">4</td> </tr> </table>	F.A.I RTE.	SECTION	COUNTY	TOTAL SHEETS	SHEET NO.	24/57	D9 WEED SPRAY 2024-1	VARIOUS	11	4
F.A.I RTE.	SECTION	COUNTY	TOTAL SHEETS	SHEET NO.												
24/57	D9 WEED SPRAY 2024-1	VARIOUS	11	4												
ILLINOIS FED. AID PROJECT					CONTRACT NO. 78A48											

SCHEDULE OF QUANTITIES

LOCATION	MARKED ROUTE	COUNTY	ESTIMATED ACRES	MILESTONE VM	VASTLAN	NON-IONIC SURFACTANT
				GALLONS	GALLONS	GALLONS
1	FAI 57 NB	ALEXANDER	48.5	2.28	9.06	3.79
	FAI 57 SB	ALEXANDER	48.5	2.28	9.06	3.79
2	FAI 57 NB	PULASKI	267.5	12.54	50.16	20.9
	FAI 57 SB	PULASKI	267.5	12.54	50.16	20.9
3	FAI 57 NB	UNION	150	7.03	28.125	11.72
	FAI 57 SB	UNION	150	7.03	28.125	11.72
4	FAI 57 NB	WILLIAMSON	320	15	60	25
	FAI 57 SB	WILLIAMSON	320	15	60	25
5	FAI 24 EB	WILLIAMSON	17.5	0.82	3.28	1.37
	FAI 24 WB	WILLIAMSON	17.5	0.82	3.28	1.37
6	FAI 57 NB	FRANKLIN	23	1.08	4.315	1.795
	FAI 57 SB	FRANKLIN	23	1.08	4.315	1.795
7	FAI 57 NB	FRANKLIN	46	2.155	8.625	3.595
	FAI 57 SB	FRANKLIN	46	2.155	8.625	3.595
TOTAL				82	328	137

MODEL: SCHEDULEQUANT (Sheet)
FILE NAME: c:\p\work\wv\illinois.gov_dacoda.blockley@d978A48-SHC-SoQ-Schedules.dgn

USER NAME = Dacoda.Blockley PLOT SCALE = 0.16666633" / in. PLOT DATE = 10/17/2023	DESIGNED - DRAWN - CHECKED - DATE -	REVISED - REVISED - REVISED - REVISED -	STATE OF ILLINOIS DEPARTMENT OF TRANSPORTATION	SCHEDULE OF QUANTITIES	<table border="1" style="width: 100%; border-collapse: collapse;"> <tr> <td style="font-size: 8px;">F.A.I RTE.</td> <td style="font-size: 8px;">SECTION</td> <td style="font-size: 8px;">COUNTY</td> <td style="font-size: 8px;">TOTAL SHEETS</td> <td style="font-size: 8px;">SHEET NO.</td> </tr> <tr> <td style="font-size: 8px;">24/57</td> <td style="font-size: 8px;">D9 WEED SPRAY 2024-1</td> <td style="font-size: 8px;">VARIOUS</td> <td style="font-size: 8px;">11</td> <td style="font-size: 8px;">5</td> </tr> <tr> <td colspan="5" style="font-size: 8px; text-align: center;">CONTRACT NO. 78A48</td> </tr> </table>	F.A.I RTE.	SECTION	COUNTY	TOTAL SHEETS	SHEET NO.	24/57	D9 WEED SPRAY 2024-1	VARIOUS	11	5	CONTRACT NO. 78A48				
F.A.I RTE.	SECTION	COUNTY	TOTAL SHEETS	SHEET NO.																
24/57	D9 WEED SPRAY 2024-1	VARIOUS	11	5																
CONTRACT NO. 78A48																				
			SCALE: 1"=50'	SHEET 5 OF 11 SHEETS	STA. TO STA.	ILLINOIS FED. AID PROJECT														

SCHEDULE OF ROUTES

LOCATION	COUNTY	MARKED ROUTE
1	ALEXANDER	I-57 FROM MP 1 TO MP 4.3 (@ THE ALEXANDER/PULASKI COUNTY LINE)
2	PULASKI	I-57 FROM MP 4.3 (@ THE ALEXANDER/PULASKI COUNTY LINE) TO MP 22 (@ THE PULASKI/UNION COUNTY LINE)
3	UNION	I-57 FROM MP 22 (@ THE PULASKI/UNION COUNTY LINE) TO EXIT 30 WITH INFIELDS
4	WILLIAMSON	I-57 FROM EXIT 44 WITH INFIELDS TO MP 62.1 (@ THE FRANKLIN/WILLIAMSON COUNTY LINE)
5	WILLIAMSON	I-24 FROM MP 1.6 (@ THE WILLIAMSON/JOHNSON COUNTY LINE) TO MP 0 (@ THE I-24/I-57 SPLIT)
6	FRANKLIN	I-57 FROM MP 62.1 (@ FRANKLIN/WILLIAMSON COUNTY LINE) TO EXIT 65 WITH INFIELDS
7	FRANKLIN	I-57 FROM STR 028-0053 TO FRANKLIN/JEFFERSON COUNTY LINE

ESTIMATE OF TOTAL MATERIALS FOR SPRAY

MATERIAL	GALLONS
MILESTONE	82.0
VASTLAN	328.0
SURFACTANT	137.0
CLEAN WATER	52,350

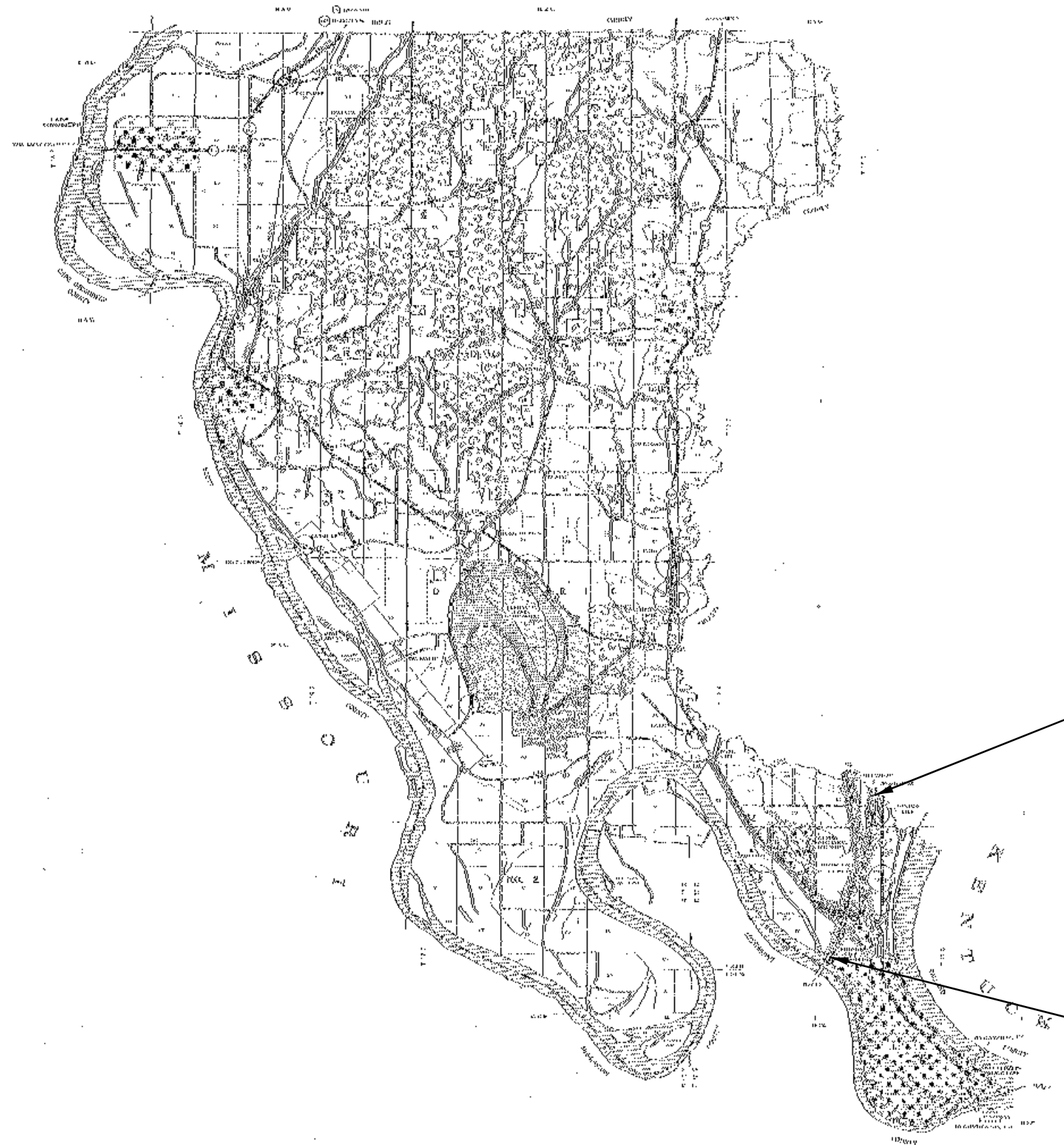
SPRAY MIXTURE

MILESTONE MIXTURE	
MILESTONE	6.0 OZ. OF PRODUCT/ACRE
VASTALAN	24 OZ. OF PRODUCT/ACRE
SURFACTANT	10 OZ. OF PRODUCT/ACRE
CLEAN WATER	30 GALLONS/ACRE

MODEL: SCHEDULEOFROUTES (Sheet)
FILE NAME: c:\p\work\wv\illinois.gov_dacoda.blockley@dacoda.blockley@illinois.gov_09255081D978A48-SHC-SoO-Schedule.dgn

USER NAME = Dacoda.Blockley	DESIGNED -	REVISED -	STATE OF ILLINOIS DEPARTMENT OF TRANSPORTATION	SCHEDULE OF ROUTES SPRAY MIXTURES	F.A.I RTE.	SECTION	COUNTY	TOTAL SHEETS	SHEET NO.
PLOT SCALE = 0.16666833" / in.	DRAWN -	REVISED -			24/57	D9 WEED SPRAY 2024-1	VARIOUS	11	6
PLOT DATE = 10/17/2023	CHECKED -	REVISED -			CONTRACT NO. 78A48				
	DATE -	REVISED -			ILLINOIS FED. AID PROJECT				
				SCALE: 1"=50'	SHEET 6	OF 11	SHEETS	STA.	TO STA.

ALEXANDER COUNTY LOCATION MAP



**END LOCATION 1: I-57 AT MP 4.3
ALEXANDER/PULASKI COUNTY LINE**

BEGIN LOCATION 1: I-57 AT MP 1

MODEL: LocationAlex [Sheet]
FILE NAME: c:\p\work\alex\illinois.gov_dacoda.blockley@d978a48-SHD-Location Maps.dgn

USER NAME =	Dacoda.Blockley	DESIGNED -	REVISED -
DRAWN -		DRAWN -	REVISED -
CHECKED -		CHECKED -	REVISED -
DATE -		DATE -	REVISED -
PLOT SCALE =	0.16666633 1/In.		
PLOT DATE =	10/17/2023		

**STATE OF ILLINOIS
DEPARTMENT OF TRANSPORTATION**

**ALEXANDER COUNTY
LOCATION MAP**

SCALE: 1"=50' SHEET 7 OF 11 SHEETS STA. TO STA.

F.A.I. RTE.	SECTION	COUNTY	TOTAL SHEETS	SHEET NO.
24/57	D9 WEED SPRAY 2024-1	VARIOUS	11	7
CONTRACT NO. 78A48				

ILLINOIS FED. AID PROJECT
FAI 24/FAI 57

PULASKI COUNTY LOCATION MAP

**END LOCATION 2: I-57 AT MP 22
PULASKI/UNION COUNTY LINE**



**BEGIN LOCATION 2: I-57 AT MP 4.3
ALEXANDER/PULASKI COUNTY LINE**

MODEL: LocationPul[Sheet]
FILE NAME: c:\p\work\w\illinois.gov\dacoda.blockley@d978A48-SHD-Location Maps.dgn

USER NAME =	Dacoda.Blockley	DESIGNED -	REVISED -
		DRAWN -	REVISED -
PLOT SCALE =	0.16666633" / in.	CHECKED -	REVISED -
PLOT DATE =	10/17/2023	DATE -	REVISED -

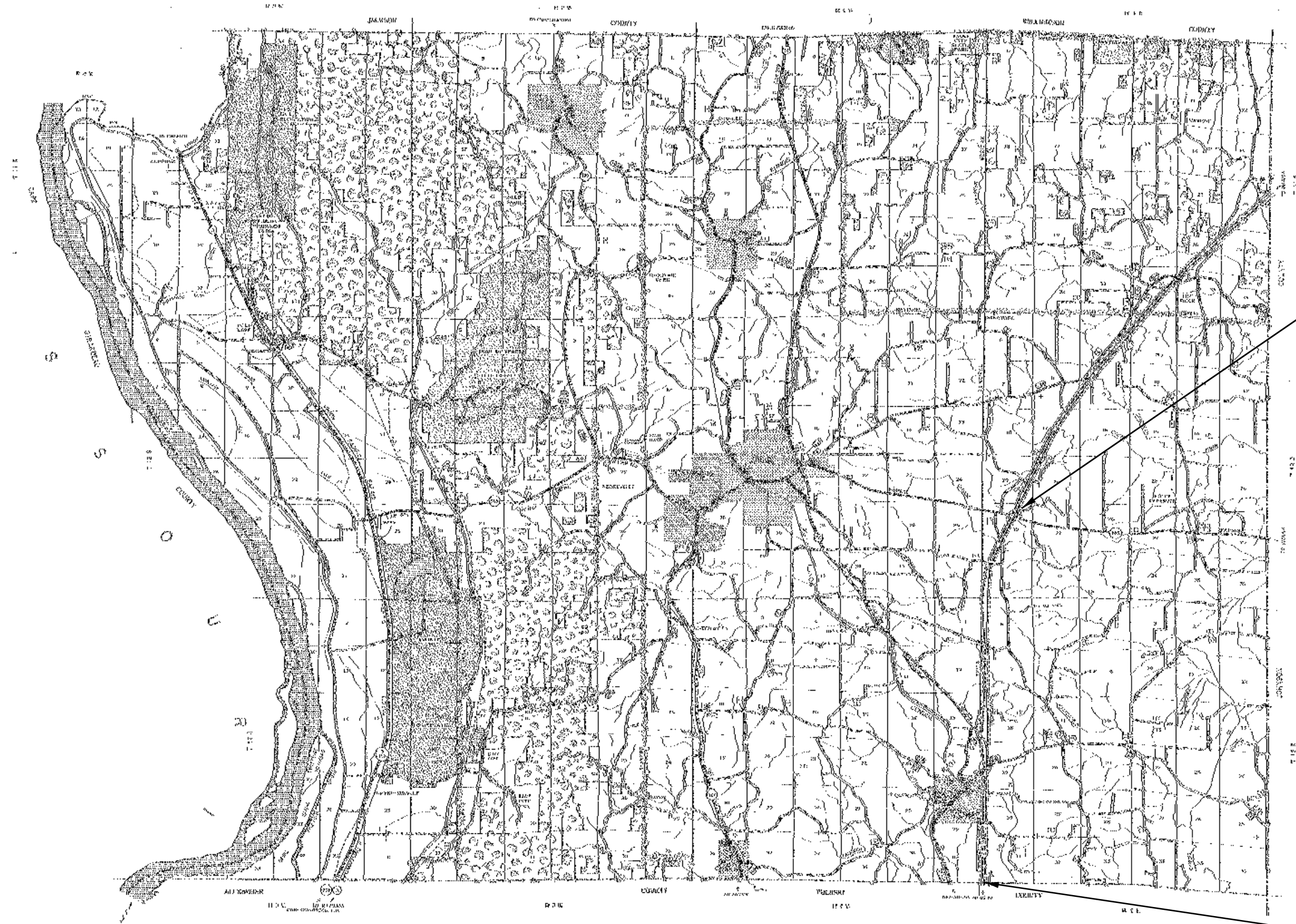
**STATE OF ILLINOIS
DEPARTMENT OF TRANSPORTATION**

**PULASKI COUNTY
LOCATION MAP**

SCALE: 1"=50' SHEET 8 OF 11 SHEETS STA. TO STA.

F.A.I. RTE.	SECTION	COUNTY	TOTAL SHEETS	SHEET NO.
24/57	D9 WEED SPRAY 2024-1	VARIOUS	11	8
CONTRACT NO. 78A48				

UNION COUNTY LOCATION MAP



**END LOCATION 3: I-57 AT EXIT 30
WITH INFIELDS**

**BEGIN LOCATION 3: I-57 AT MP 22
PULASKI/UNION COUNTY LINE**

MODEL: LocationUnion (Sheet)
FILE NAME: c:\p\work\illinois.gov_dacoda_blockley\092508\0978A48-SHD-Location Maps.dgn

USER NAME = Dacoda.Blockley	DESIGNED -	REVISED -
	DRAWN -	REVISED -
PLOT SCALE = 0.16666633' / in.	CHECKED -	REVISED -
PLOT DATE = 10/17/2023	DATE -	REVISED -

**STATE OF ILLINOIS
DEPARTMENT OF TRANSPORTATION**

**UNION COUNTY
LOCATION MAP**

SCALE: 1"=50' SHEET 9 OF 11 SHEETS STA. TO STA.

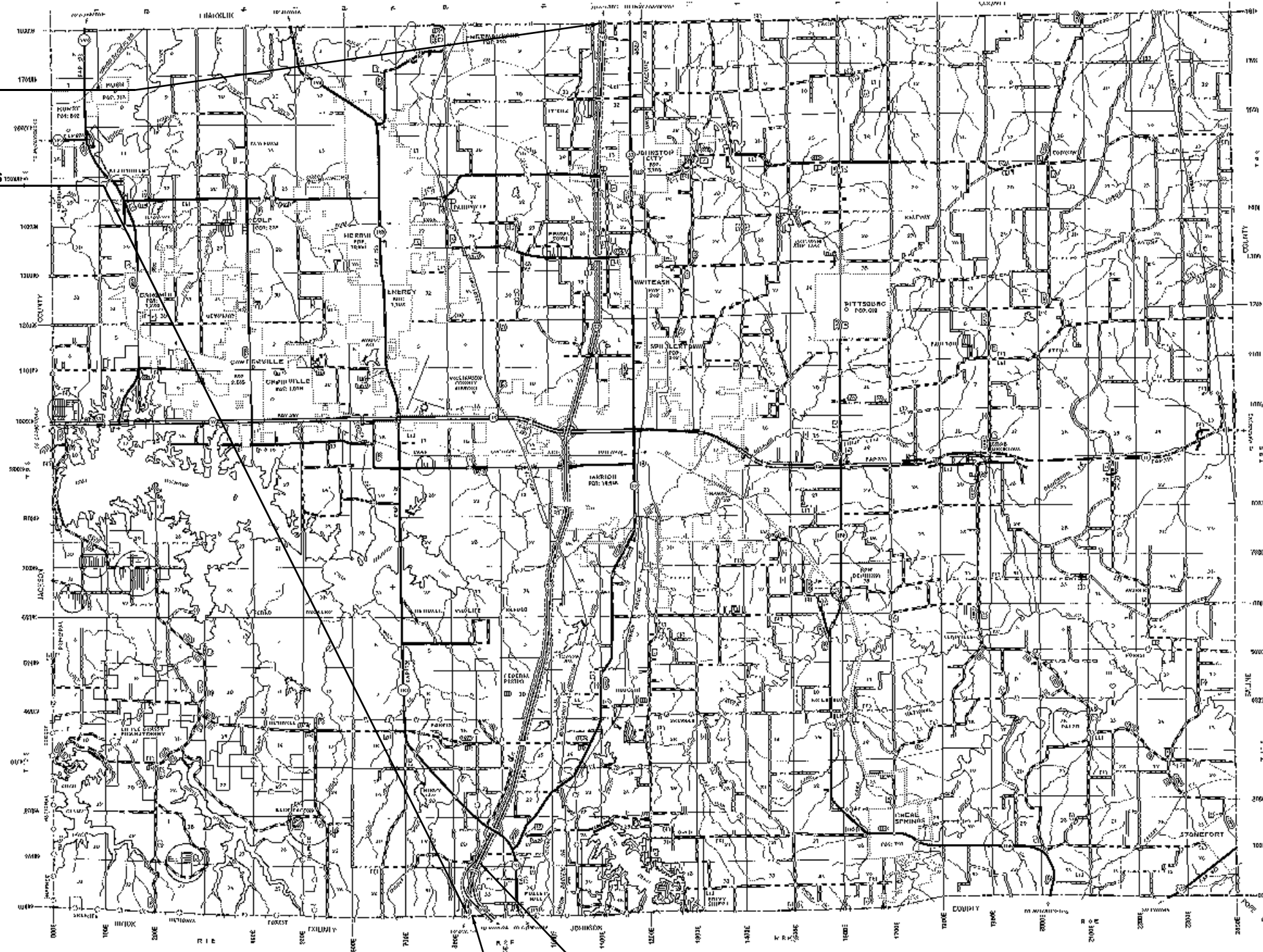
F.A.I. RTE.	SECTION	COUNTY	TOTAL SHEETS	SHEET NO.
24/57	D9 WEED SPRAY 2024-1	VARIOUS	11	9
CONTRACT NO. 78A48				

ILLINOIS FED. AID PROJECT
FAI 24/FAI 57

WILLIAMSON COUNTY LOCATION MAP

END LOCATION 4: I-57 AT MP 62.1
FRANKLIN/WILLIAMSON COUNTY LINE

BEGIN LOCATION 4: I-57 AT EXIT 44 WITH INFIELDS
WILLIAMSON/JOHNSON COUNTY LINE



END LOCATION 5: I-24 AT MP 1.6
I-57-I-24 SPLIT

BEGIN LOCATION 5: I-24 AT MP 0
JOHNSON/WILLIAMSON COUNTY LINE

MODEL: Location\Williamson-1 [Sheet]
 FILE NAME: c:\pwworking\williamson.gov_dacoda.blockley@illinois.gov\0925508\0978448-SHD-Location Maps.dgn

USER NAME = Dacoda.Blockley	DESIGNED -	REVISED -
	DRAWN -	REVISED -
PLOT SCALE = 0.16666833 / in.	CHECKED -	REVISED -
PLOT DATE = 10/17/2023	DATE -	REVISED -

STATE OF ILLINOIS
DEPARTMENT OF TRANSPORTATION

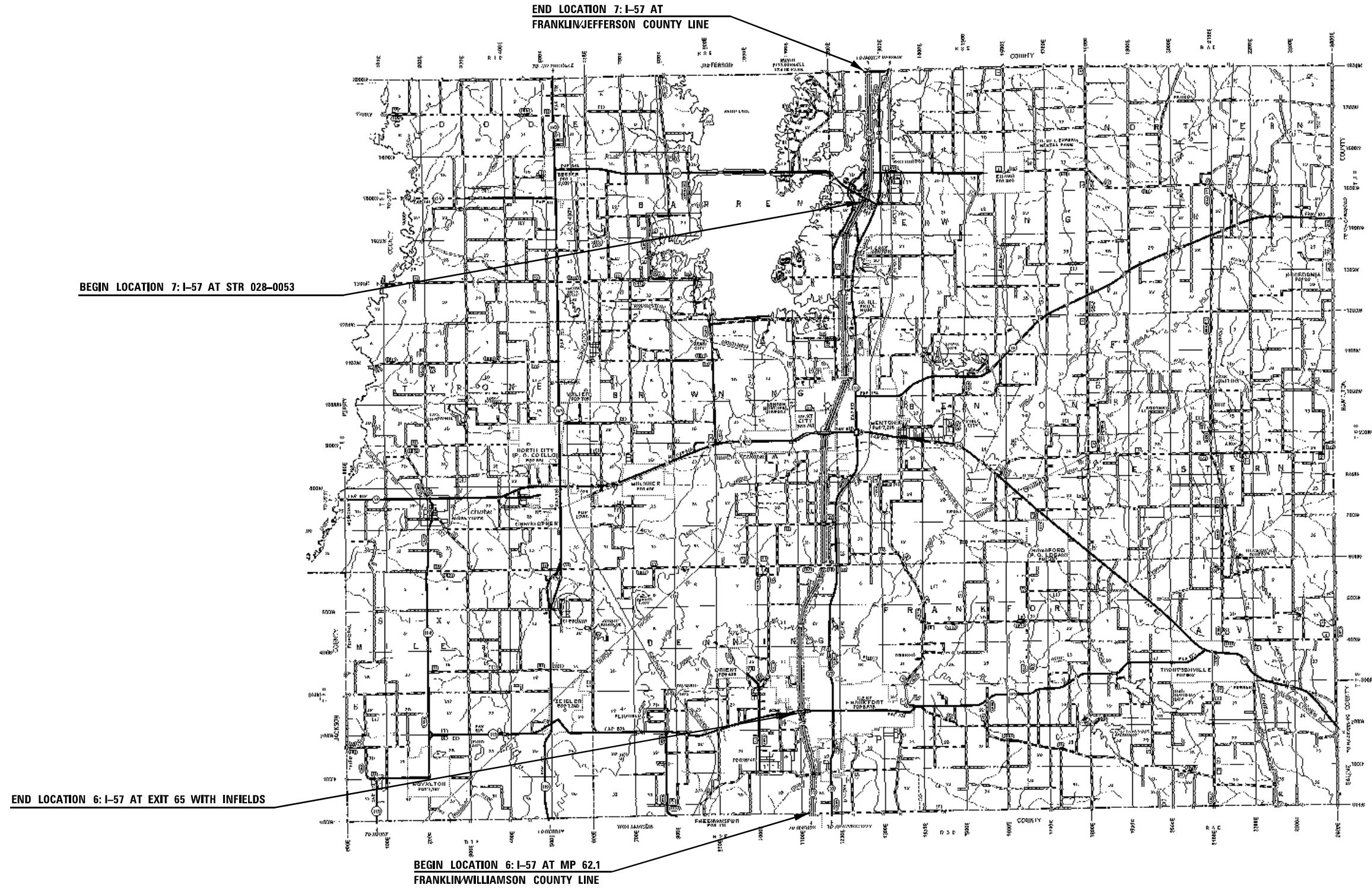
WILLIAMSON COUNTY
LOCATION MAP

SCALE: 1"=50' SHEET 10 OF 11 SHEETS STA. TO STA.

F.A.I. RTE.	SECTION	COUNTY	TOTAL SHEETS	SHEET NO.
24/57	D9 WEED SPRAY 2024-1	VARIOUS	11	10
CONTRACT NO. 78A48				

ILLINOIS FED. AID PROJECT
 FAI 24/FAI 57

FRANKLIN COUNTY LOCATION MAP



MODEL: LocationFRAN (Sheet)
 FILE NAME: c:\p\work\locat\illinois.gov_dacoda.blockley@illinois.gov\022508\0978A48-SHD-Location Maps.dgn

USER NAME = Dacoda.Blockley	DESIGNED -	REVISED -
	DRAWN -	REVISED -
PLOT SCALE = 0.16666833 / in.	CHECKED -	REVISED -
PLOT DATE = 10/17/2023	DATE -	REVISED -

STATE OF ILLINOIS
DEPARTMENT OF TRANSPORTATION

FRANKLIN COUNTY	
LOCATION MAP	
SCALE: 1"=50'	SHEET 11 OF 11 SHEETS
STA.	TO STA.

F.A.I. RTE.	SECTION	COUNTY	TOTAL SHEETS	SHEET NO.
24/57	D9 WEED SPRAY 2024-1	VARIOUS	11	11
CONTRACT NO. 78A48				
ILLINOIS FED. AID PROJECT				