

**INDEX OF SHEETS**

01-19-2024 LETTING ITEM 068

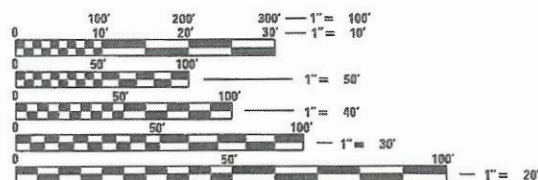
SHEET NO.	ITEM
1	COVER SHEET
2	GENERAL NOTES, UTILITIES & COMMITMENTS
3-4	SUMMARY OF QUANTITIES
5-6	TYPICAL SECTIONS
7-8	SCHEDULES OF QUANTITIES
9-10	PLAN & PROFILE SHEETS
11	EROSION CONTROL, PAVEMENT MARKING AND SIGNING SHEET
12	RIGHT OF WAY PLAN SHEET
13	REMOVAL PLAN SHEET
14-15	INTERSECTION DETAILS
16-17	CONSTRUCTION DETAILS
18-22	CROSS SECTION SHEETS

**HIGHWAY STANDARDS**

000001-08	STANDARD SYMBOLS, ABBREVIATIONS AND PATTERNS
001001-02	AREAS OF REINFORCEMENT BARS
001006	DECIMAL OF AN INCH AND OF A FOOT
280001-07	TEMPORARY EROSION CONTROL SYSTEMS
420001-10	PAVEMENT JOINTS
424001-11	PERPENDICULAR CURB RAMPS FOR SIDEWALKS
424016-05	MID BLOCK CURB RAMPS FOR SIDEWALKS
424026-03	ENTRANCE /ALLEY PEDESTRIAN CROSSING
424031-02	MEDIAN PEDESTRIAN CROSSINGS
442101-09	CLASS B PATCHES
542401-04	METAL END SECTION FOR PIPE CULVERTS
602401-07	PRECAST MANHOLE TYPE A 4' (1.22 m) DIAMETER
602402-03	PRECAST MANHOLE TYPE A 5' (1.52 m) DIAMETER
602601-06	PRECAST REINFORCED CONCRETE FLAT SLAB TOP
602701-02	MANHOLE STEPS
604001-05	FRAME AND LIDS TYPE 1
604005-05	FRAME AND GRATE TYPE 3
606001-08	CONCRETE CURB TYPE B AND COMBINATION CONCRETE CURB AND GUTTER
701011-04	OFF-RD MOVING OPERATIONS, 2L, 2W, DAY ONLY
701301-04	LANE CLOSURE, 2L, 2W, SHORT TIME OPERATIONS
701311-03	LANE CLOSURE, 2L, 2W, MOVING OPERATIONS-DAY ONLY
701501-06	URBAN LANE CLOSURE, 2L, 2W, UNDIVIDED
701502-09	URBAN LANE CLOSURE, 2L, 2W, WITH BIDIRECTIONAL LEFT TURN LANE
701901-08	TRAFFIC CONTROL DEVICES
720001-01	SIGN PANEL MOUNTING DETAILS
720006-04	SIGN PANEL ERECTION DETAILS
728001-01	TELESCOPING STEEL SIGN SUPPORT
780001-05	TYPICAL PAVEMENT MARKINGS
782001-01	CURB REFLECTORS

**SCALE IN FEET**

PLAN	1" = 20'
PROFILE HORIZ	1" = 20'
PROFILE VERT	1" = 5'
CROSS SECTION HORIZ	1" = 10'
CROSS SECTION VERT	1" = 5'



FULL SIZE PLANS HAVE BEEN PREPARED USING STANDARD ENGINEERING SCALES. REDUCED SIZED PLANS WILL NOT CONFORM TO STANDARD SCALES. IN MAKING MEASUREMENTS ON REDUCED PLANS, THE ABOVE SCALES MAY BE USED.

J.U.L.I.E.  
JOINT UTILITY LOCATION INFORMATION FOR EXCAVATION  
1-800-892-0123  
OR 811

**DESIGN DESIGNATION**  
ROADWAY CLASSIFICATION = MAJOR COLLECTOR  
DESIGN SPEED = 25 MPH  
CURRENT ADT (2018) = 4,050  
DESIGN YEAR ADT (2042) = 5,140

**STATE OF ILLINOIS  
DEPARTMENT OF TRANSPORTATION**

**PLANS FOR PROPOSED**

**STP FUNDS  
CITY OF FAIRVIEW HEIGHTS  
MARKET PLACE PHASE 3 IMPROVEMENTS  
FAU ROUTE 9326  
ST CLAIR COUNTY  
SECTION: 17-00042-02-RS  
PROJECT: QRKF(608)  
JOB NO.: C-98-009-21**



**LOCATION MAP**

SCALE: 1" = 3,000'

GROSS LENGTH = 846' = (0.160 MILES)  
NET LENGTH = 846' = (0.160 MILES)



*Brian Heil* 1/22/23  
BRIAN HEIL  
IL P.E. NO. 062-054934  
EXPIRES: 11/30/2023

F.A.U. RTE.	SECTION	COUNTY	TOTAL SHEETS	SHEET NO.
9326	17-00042-02-RS	ST CLAIR	22	1
FEDERAL AID PROJECT		ILLINOIS	CONTRACT NO. 97803	



STATE OF ILLINOIS  
DEPARTMENT OF TRANSPORTATION

APPROVED: *[Signature]* 1/22/23 DATE  
MARK T. KUPSKY MAYOR OF FAIRVIEW HEIGHTS

PASSED: *[Signature]* 11/1/24 DATE  
DISTRICT LOCAL ROADS ENGINEER

RELEASING FOR BID BASED ON LIMITED REVIEW: *[Signature]* 11/1/24 DATE  
REGION 5 ENGINEER



Collinsville 100 Lanier Court, Suite 11  
Collinsville, IL 62234  
618.345.2200

St. Louis 720 Olive, Suite 700  
St. Louis, MO 63101  
314.588.8381

Belleville 1 South Church, Suite 200  
Belleville, IL 62220  
618.415.8508  
www.oatesassociates.com

St. Charles 820 South Main, Suite 309  
St. Charles, MO 63301  
636.493.6277

ILLINOIS DESIGN FIRM LICENSE NO. 184.001115

**PRINTED BY THE AUTHORITY  
OF THE STATE OF ILLINOIS**

**GENERAL NOTES**

**UTILITIES**

- ABOVE-GROUND UTILITY FACILITIES OR APPURTENANCES SHALL BE RELOCATED OR ADJUSTED BY THEIR RESPECTIVE OWNERS TO PROVIDE A MINIMUM HORIZONTAL CLEARANCE OF 1.5 FEET, MEASURED FROM THE FACE OF CURB TO THE NEAR EDGE OF THE OBJECT.
- THE FOLLOWING UTILITY COMPANIES MAY HAVE FACILITIES LOCATED WITHIN THE LIMITS OF CONSTRUCTION WHICH MAY REQUIRE ADJUSTMENT, RELOCATION OR REMOVAL. REFER TO THE "STATUS OF UTILITIES TO BE ADJUSTED" SPECIAL PROVISION FOR ADDITIONAL INFORMATION.

AMEREN ILLINOIS* (ELECTRIC) 500 EAST BROADWAY EAST ST. LOUIS, IL 62202 (618) 482-2238	CHARTER COMMUNICATIONS* (COMMUNICATIONS) 815 CHARTER COMMONS TOWN & COUNTRY, MO 63017 (636) 387-6650
--	---

AMEREN ILLINOIS* (GAS) 1050 WEST BOULEVARD BELLEVILLE, IL 62221 (618) 530-0125	CLEARWAVE FIBER* (COMMUNICATIONS) 2 N VINE STREET HARRISBURG, IL 62946 (618) 294-4004
---	--

AT&T* (TELEPHONE) 1640 E HAZEL DELL RD SPRINGFIELD, IL 62703 (217) 331-8475	CITY OF FAIRVIEW HEIGHTS* (SEWER) 10025 BUNKUM ROAD FAIRVIEW HEIGHTS, IL 62208 (618) 489-2020
--	--

CASEYVILLE TOWNSHIP* (SANITARY SEWER) 1 ECOLOGY DRIVE FAIRVIEW HEIGHTS, IL 62208 (618) 632-2414	CITY OF O'FALLON* (WATER) 255 SOUTH LINCOLN AVENUE O'FALLON, IL 62269 (618) 624-4500
--	---

MEMBERS OF J.U.L.I.E. CALL TOLL FREE (800) 892-0123 OR 811 AND ARE INDICATED BY A \*. NON J.U.L.I.E. MEMBERS MUST BE NOTIFIED INDIVIDUALLY.

**GENERAL**

- IN CASE OF CONFLICT BETWEEN THE CONSTRUCTION PLANS AND THE RIGHT OF WAY PLANS, THE RIGHT OF WAY PLANS SHALL TAKE PRECEDENCE IN MATTERS CONCERNING RIGHT OF WAY AND EASEMENTS. THE CONSTRUCTION PLANS SHALL TAKE PRECEDENCE IN MATTERS CONCERNING CONSTRUCTION ITEMS.
- THE CONTRACTOR SHALL VERIFY ALL DIMENSIONS AND CONDITIONS IN THE FIELD PRIOR TO ORDERING MATERIALS AND COMMENCING CONSTRUCTION.
- THE CONTRACTOR SHALL STAGE ALL WORK IN SUCH A WAY AS TO MAINTAIN INGRESS AND EGRESS TO ALL ABUTTING PROPERTIES AT ALL TIMES DURING CONSTRUCTION. AGGREGATE FOR TEMPORARY ACCESS WILL BE MEASURED FOR PAYMENT AS SPECIFIED IN THE CONTRACT. THE COST OF ALL OTHER MATERIALS REQUIRED AND ALL OTHER LABOR NECESSARY TO COMPLY WITH THIS PROVISION WILL NOT BE PAID FOR SEPARATELY, BUT SHALL BE CONSIDERED AS INCLUDED IN THE UNIT BID PRICES OF THE CONTRACT.
- THE CONTRACTOR SHALL CONFINE ALL OPERATIONS TO THE CONSTRUCTION LIMITS LINE SHOWN ON THE PLANS. ANY AREA DISTURBED BEYOND THESE LIMITS SHALL BE RESTORED TO ITS ORIGINAL CONDITION AT THE CONTRACTOR'S EXPENSE.
- PERMANENT SEEDING/SODDING SHALL BE INCLUDED IN A SEPARATE LANDSCAPE CONTRACT. TEMPORARY SEEDING INSIDE THE CONSTRUCTION LIMITS SHALL BE USED AS DIRECTED BY THE ENGINEER TO SUPPLEMENT UNTIL THE LANDSCAPE CONTRACT BEGINS. ANY SEEDING OUTSIDE THE CONSTRUCTION LIMITS WILL NOT BE PAID FOR. SEE THE SEEDING SCHEDULE FOR ESTIMATED PLAN QUANTITIES.

**PAVING**

- HIGH EARLY STRENGTH CONCRETE MIX SHALL BE USED FOR THE CONSTRUCTION OF PCC ENTRANCES AND SIDE ROADS. THE COST OF THIS WORK WILL NOT BE PAID FOR SEPARATELY, BUT SHALL BE CONSIDERED AS INCLUDED IN THE CONTRACT UNIT PRICE FOR THE VARIOUS PCC DRIVEWAY PAVEMENT ITEMS INCLUDED IN THE CONTRACT.
- HIGH EARLY STRENGTH CONCRETE MIX SHALL BE USED FOR ALL PCC PATCHING. THE COST OF THIS WORK WILL NOT BE PAID FOR SEPARATELY, BUT SHALL BE CONSIDERED AS INCLUDED IN THE CONTRACT UNIT PRICE FOR THE VARIOUS PATCHING ITEMS INCLUDED IN THE CONTRACT
- AT VARIOUS LOCATIONS, IT MAY BE NECESSARY TO TRANSITION PROPOSED COMBINATION CONCRETE CURB AND GUTTER TO MEET EXISTING CURBS OR GUTTERS. THE MINIMUM LENGTH OF TRANSITIONAL COMBINATION CURB AND GUTTER SHALL BE 10 FEET, UNLESS DIRECTED OTHERWISE BY THE ENGINEER.

**DRAINAGE**

- STORM SEWER INVERTS SHOWN ON THE PLANS HAVE BEEN CALCULATED TO THE CENTER OF THE STRUCTURE. THE STORM SEWER SLOPES SHOWN ON THE PLANS ARE THE PERCENT GRADE FROM CENTER TO CENTER OF STRUCTURE. THE LENGTH OF STORM SEWERS SHOWN ON THE PLANS IS THE DISTANCE FROM CENTER TO CENTER OF STRUCTURE. STORM SEWER WILL BE MEASURED AND PAID FOR AS SPECIFIED IN ARTICLES 550.09 AND 550.10 OF THE "STANDARD SPECIFICATIONS FOR ROAD AND BRIDGE CONSTRUCTION." FLARED END SECTIONS ARE LOCATED BY STATION, OFFSET AND FLOWLINE ELEVATION AT THE FLARED END OF THE FLARED END SECTION.

- THE OFFSETS TO ALL INLETS AND MANHOLES ARE GIVEN TO THE CENTER OF THE OPENING AT THE BASE OF THE FRAME AND GRATE OR LID. CONCENTRIC DRAINAGE STRUCTURES WERE ASSUMED WHEN CALCULATING THESE DIMENSIONS.
- THE CONTRACTOR SHALL INCLUDE THE COST OF MAKING CONNECTIONS TO EXISTING DRAINAGE STRUCTURES IN THE CONTRACT UNIT PRICE FOR THE STORM SEWER ITEMS INVOLVED.

**PAVEMENT MARKING**

- THE PAVEMENT MARKING LOCATIONS SHOWN IN THE PLANS ARE APPROXIMATE. PROPOSED CROSSWALKS AND STOP BARS SHALL BE ADJUSTED AS DIRECTED BY THE ENGINEER, IF NECESSARY, TO MATCH FIELD CONDITIONS.
- TEMPORARY PAVEMENT MARKING HAS BEEN INCLUDED IN THE SUMMARY OF QUANTITIES IN THE EVENT THE EPOXY PAVEMENT MARKINGS ARE UNABLE TO BE INSTALLED PRIOR TO A CONSTRUCTION SHUTDOWN, IE WEATHER CONDITIONS. THE ENGINEER SHALL DETERMINE IF THE TEMPORARY PAVEMENT MARKING WILL NEED TO BE INSTALLED.

**APPROXIMATE QUANTITIES, SYMBOLS & ABBREVIATIONS**

- THE FOLLOWING ITEMS AND APPROXIMATE QUANTITIES ARE INCLUDED IN THE "SUMMARY OF QUANTITIES" IN ORDER TO ESTABLISH A UNIT COST FOR WORK WHICH MAY BE REQUIRED TO CONSTRUCT THIS SECTION. THE ACTUAL QUANTITY OF EACH ITEM SHALL BE DETERMINED BY THE ENGINEER IN THE FIELD.

REMOVAL AND DISPOSAL OF UNSUITABLE MATERIAL	100 CU YD
AGGREGATE FOR TEMPORARY ACCESS	200 TON

- THE FOLLOWING SYMBOLS AND ABBREVIATIONS SUPPLEMENT OR SUPERCEDE HIGHWAY STANDARD 000001:

AD	ALGEBRAIC DIFFERENCE IN GRADE
BVCE	BEGINNING OF VERTICAL CURVE ELEVATION
BVCS	BEGINNING OF VERTICAL CURVE STATION
BO	BY OTHERS (USED IN CONJUNCTION WITH TBA & TBR)
CONSTR	CONSTRUCTION
CP	CONTROL POINT
ESMT	EASEMENT
ELEV	ELEVATION
EVCE	END OF VERTICAL CURVE ELEVATION
EVCS	END OF VERTICAL CURVE STATION
K	LENGTH OF VERTICAL CURVE PER PERCENT GRADE DIFFERENCE
N/F	NOW OR FORMERLY
O/C	OIL AND CHIP
PERM	PERMANENT
PVI	POINT OF VERTICAL INTERSECTION
PVC	POLYVINYL CHLORIDE PIPE
TCE	TEMPORARY CONSTRUCTION EASEMENT
TUP	TEMPORARY USE PERMIT
TBA	TO BE ADJUSTED
TBRL	TO BE RELOCATED
TYP	TYPICAL
W	WIDTH
TBA	TO BE ADJUSTED
TBRL	TO BE RELOCATED
TYP	TYPICAL
W	WIDTH

**COMMITMENTS**

- THE ENTRANCE AT STA. 26+77.5 RT SHALL BE ONE OF THE FIRST CONSTRUCTION ITEMS STARTED ONCE THE CONTRACT HAS BEEN EXECUTED. STAGED RECONSTRUCTION SHALL BE UTILIZED ON THIS ENTRANCE SO THAT IT IS NEVER CLOSED MORE THAN ITS HALF WIDTH TO TRAFFIC. IN ADDITION, THIS ENTRANCE SHALL BE RECONSTRUCTED AND OPENED TO ITS FULL WIDTH WITHIN 90 CALENDAR DAYS.

MODEL: Default; FILE NAME: I:\0221131 - MarkedPlace Ph 3 - F:\reflow - ITC\CADD\Microstation\GADD Sheets\08221131-1-1-1-1-1.dgn



USER NAME = brian.heil	DESIGNED -	REVISED -
	DRAWN -	REVISED -
PLOT SCALE = 40.0000 ' / in.	CHECKED -	REVISED -
PLOT DATE = 4/25/2023	DATE -	REVISED -

**STATE OF ILLINOIS  
DEPARTMENT OF TRANSPORTATION**

GENERAL NOTES, UTILITIES & COMMITMENTS			
SCALE:	SHEET 1	OF 1	SHEETS
	STA.		TO STA.

F.A.U RTE.	SECTION	COUNTY	TOTAL SHEETS	SHEET NO.
9326	17-00042-02-R5	ST CLAIR	22	2
			CONTRACT NO. 97803	
		ILLINOIS	FED. AID PROJECT	

SI	SP	CODE NO.	ITEM	UNIT	TOTAL QUANTITY
		20200100	EARTH EXCAVATION	CU YD	320
		20201200	REMOVAL AND DISPOSAL OF UNSUITABLE MATERIAL	CU YD	100
		28000250	TEMPORARY EROSION CONTROL SEEDING	POUND	76
		28000500	INLET AND PIPE PROTECTION	EACH	10
		35101600	AGGREGATE BASE COURSE, TYPE B 4"	SQ YD	409
		35102400	AGGREGATE BASE COURSE, TYPE B 12"	SQ YD	443
		40201000	AGGREGATE FOR TEMPORARY ACCESS	TON	200
		42000301	PORTLAND CEMENT CONCRETE PAVEMENT 8" (JOINTED)	SQ YD	213
		42300400	PORTLAND CEMENT CONCRETE DRIVEWAY PAVEMENT, 8 INCH	SQ YD	372
		42400100	PORTLAND CEMENT CONCRETE SIDEWALK 4 INCH	SQ FT	3,534
	*	42400800	DETECTABLE WARNINGS	SQ FT	60
		44000100	PAVEMENT REMOVAL	SQ YD	52
		44000200	DRIVEWAY PAVEMENT REMOVAL	SQ YD	445
		44000500	COMBINATION CURB AND GUTTER REMOVAL	FOOT	979

SI	SP	CODE NO.	ITEM	UNIT	TOTAL QUANTITY
	*	44200929	CLASS B PATCHES, TYPE I, 8 INCH	SQ YD	8
	*	44200934	CLASS B PATCHES, TYPE II, 8 INCH	SQ YD	60
	*	44200942	CLASS B PATCHES, TYPE III, 8 INCH	SQ YD	116
	*	44200944	CLASS B PATCHES, TYPE IV, 8 INCH	SQ YD	280
		44201298	DOWEL BARS 1 1/4"	EACH	525
		44213200	SAW CUTS	FOOT	2,367
	*	44213204	TIE BARS 3/4"	EACH	572
		54262708	METAL FLARED END SECTIONS 8"	EACH	4
		542C0213	PIPE CULVERTS, CLASS C, TYPE 1 8"	FOOT	24
	*	56109210	WATER VALVES TO BE ADJUSTED	EACH	4
	*	56500300	DOMESTIC METER VAULTS TO BE ADJUSTED	EACH	2
		60218500	MANHOLES, TYPE A, 4'-DIAMETER, TYPE 3 FRAME AND GRATE	EACH	1
		60255500	MANHOLES TO BE ADJUSTED	EACH	1
		60260400	INLETS TO BE ADJUSTED WITH NEW TYPE 1 FRAME, CLOSED LID	EACH	1

NOTES: SI = SPECIALTY ITEM  
SP = SEE PROJECT SPECIFIC SPECIAL PROVISIONS

MODEL: Default  
FILE NAME: I:\HW221131 - Hprk\0808 - Hprk\0808.dwg  
3 - Fall\rev I:\HW221131 - Hprk\0808\0808\CADD Sheets\08221131-HW-500.dwg



USER NAME = brian.hed	DESIGNED -	REVISED -
PLOT SCALE = 40.0000' / in.	DRAWN -	REVISED -
PLOT DATE = 1/25/2023	CHECKED -	REVISED -
	DATE -	REVISED -

**STATE OF ILLINOIS  
DEPARTMENT OF TRANSPORTATION**

SCALE:		SHEET 1	OF 2	SHEETS	STA.	TO STA.
--------	--	---------	------	--------	------	---------

SUMMARY OF QUANTITIES		F.A.U. RTE. 9326	SECTION 17-00042-02-RS	COUNTY ST CLAIR	TOTAL SHEETS 22	SHEET NO. 3
				CONTRACT NO. 97803		
ILLINOIS FED. AID PROJECT						



SI	SP	CODE NO.	ITEM	UNIT	TOTAL QUANTITY
		60500060	REMOVING INLETS	EACH	1
		60604400	COMBINATION CONCRETE CURB AND GUTTER, TYPE B-6.18	FOOT	880
		67100100	MOBILIZATION	L SUM	1
		70102620	TRAFFIC CONTROL AND PROTECTION, STANDARD 701501	L SUM	1
		70102622	TRAFFIC CONTROL AND PROTECTION, STANDARD 701502	L SUM	1
		70300211	TEMPORARY PAVEMENT MARKING LETTERS AND SYMBOLS - PAINT	SQ FT	54.4
		70300221	TEMPORARY PAVEMENT MARKING - LINE 4"- PAINT	FOOT	1,753
		70300261	TEMPORARY PAVEMENT MARKING - LINE 12"- PAINT	FOOT	99
		70300281	TEMPORARY PAVEMENT MARKING - LINE 24"- PAINT	FOOT	63
*	*	72000100	SIGN PANEL - TYPE 1	SQ FT	21.6
*	*	72800100	TELESCOPING STEEL SIGN SUPPORT	FOOT	50.0
*		78009000	MODIFIED URETHANE PAVEMENT MARKING - LETTERS AND SYMBOLS	SQ FT	54.4
*		78009004	MODIFIED URETHANE PAVEMENT MARKING - LINE 4"	FOOT	1,753
*		78009012	MODIFIED URETHANE PAVEMENT MARKING - LINE 12"	FOOT	99

SI	SP	CODE NO.	ITEM	UNIT	TOTAL QUANTITY
*		78009024	MODIFIED URETHANE PAVEMENT MARKING - LINE 24"	FOOT	63
*		78200020	CURB REFLECTORS	EACH	15
		78300202	PAVEMENT MARKING REMOVAL - WATER BLASTING	SQ FT	1,226
*		X0350810	BOLLARD REMOVAL	EACH	2
*		X6060505	CONCRETE CURB (SPECIAL)	FOOT	234
		Z0013798	CONSTRUCTION LAYOUT	L SUM	1
*	*	Z0036200	PAINT CURB	FOOT	82
#		Z0076600	TRAINEES	HOOR	500
#		Z0076604	TRAINEES TRAINING PROGRAM GRADUATE	HOOR	500

NOTES: SI = SPECIALTY ITEM  
 SP = SEE PROJECT SPECIFIC SPECIAL PROVISIONS  
 # = 0042

MODEL: Default  
 FILE NAME: I:\RPV21131 - Managespace Ph 3 - Fileview I15\CAD\Microstation\CADD Sheets\08221131.dwg-500.dgn



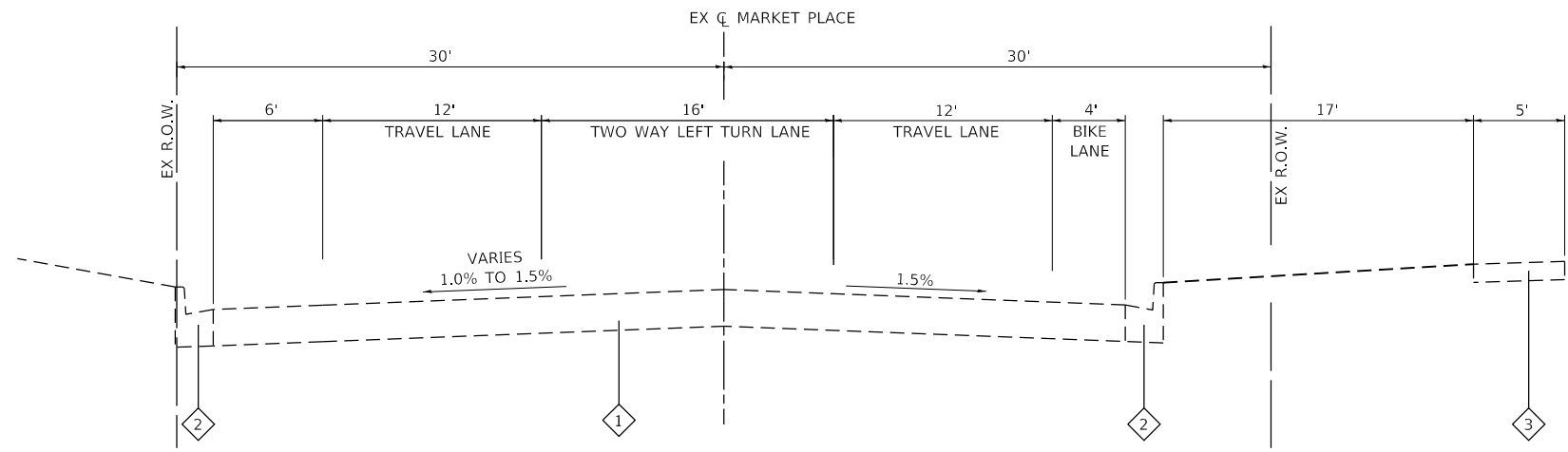
USER NAME = brian.heil	DESIGNED -	REVISED -
PLOT SCALE = 40.0000' / in.	DRAWN -	REVISED -
PLOT DATE = 1/26/2023	CHECKED -	REVISED -
	DATE -	REVISED -

**STATE OF ILLINOIS  
 DEPARTMENT OF TRANSPORTATION**

**SUMMARY OF QUANTITIES**

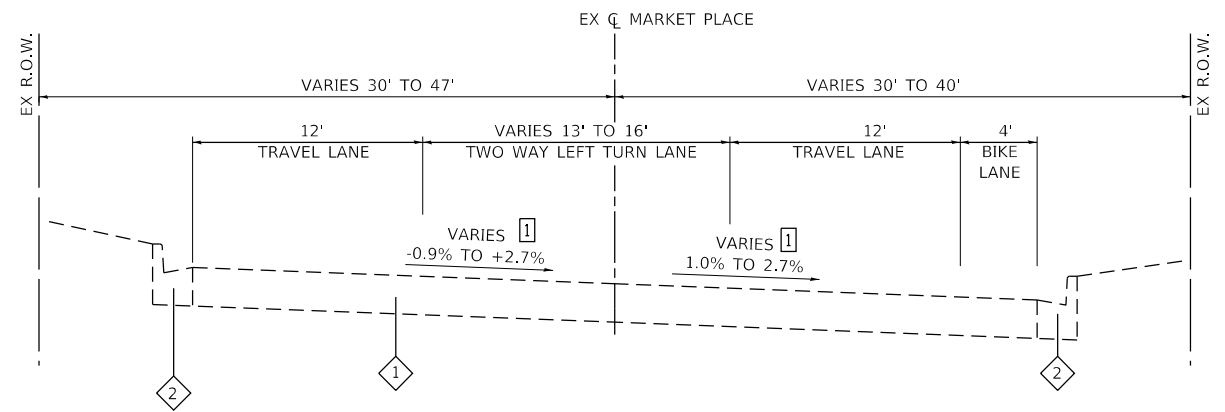
SCALE: SHEET 2 OF 2 SHEETS STA. TO STA.

F.A.U. RTE.	SECTION	COUNTY	TOTAL SHEETS	SHEET NO.
9326	17-00042-02-R5	ST CLAIR	22	4
ILLINOIS FED. AID PROJECT			CONTRACT NO. 97803	



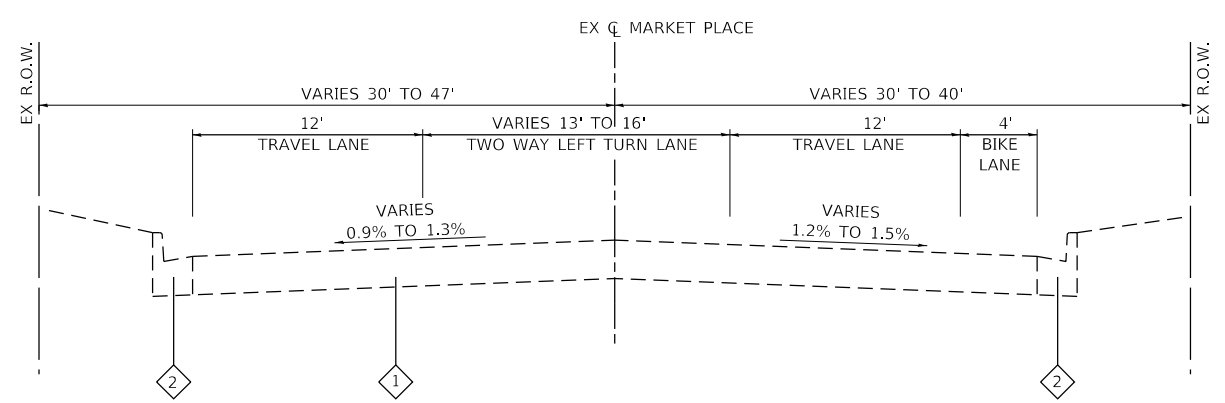
**EXISTING MARKET PLACE**

STA. 26+76 TO STA. 28+28



**EXISTING MARKET PLACE**

STA. 22+25 TO STA. 25+60



**EXISTING MARKET PLACE**

STA. 22+11 TO STA. 22+25  
STA. 25+60 TO STA. 26+76

**TYPICAL SECTION LEGEND**

- 1 EXISTING UNREINFORCED PCC PAVEMENT, 8"
- 2 EXISTING COMBINATION CONCRETE CURB AND GUTTER, TYPE B-6.18
- 3 EXISTING SIDEWALK
- 4 PROPOSED AGGREGATE BASE COURSE, 12"
- 5 PROPOSED PORTLAND CEMENT CONCRETE PAVEMENT, 8" JOINTED
- 6 PROPOSED CONCRETE CURB AND GUTTER TYPE B-6.18
- 7 PROPOSED CONCRETE SIDEWALK, 4"
- 8 PROPOSED CONCRETE CURB SPECIAL (SEE CONSTRUCTION DETAIL)

**EXISTING TYPICAL SECTION NOTES**

- 1 SLOPE VARIES. SEE CROSS SECTIONS FOR SUPERELEVATION.

MODEL: Default  
 FILE NAME: I:\2022\1131 - MarketPlace Ph 3 - EIR\Draw HRC\CADD\Microstation\CADD Sheets\08221131-1-1-1-1-1-1.dgn  
 ILLINOIS DESIGN FIRM LICENSE NO.: 184.001115

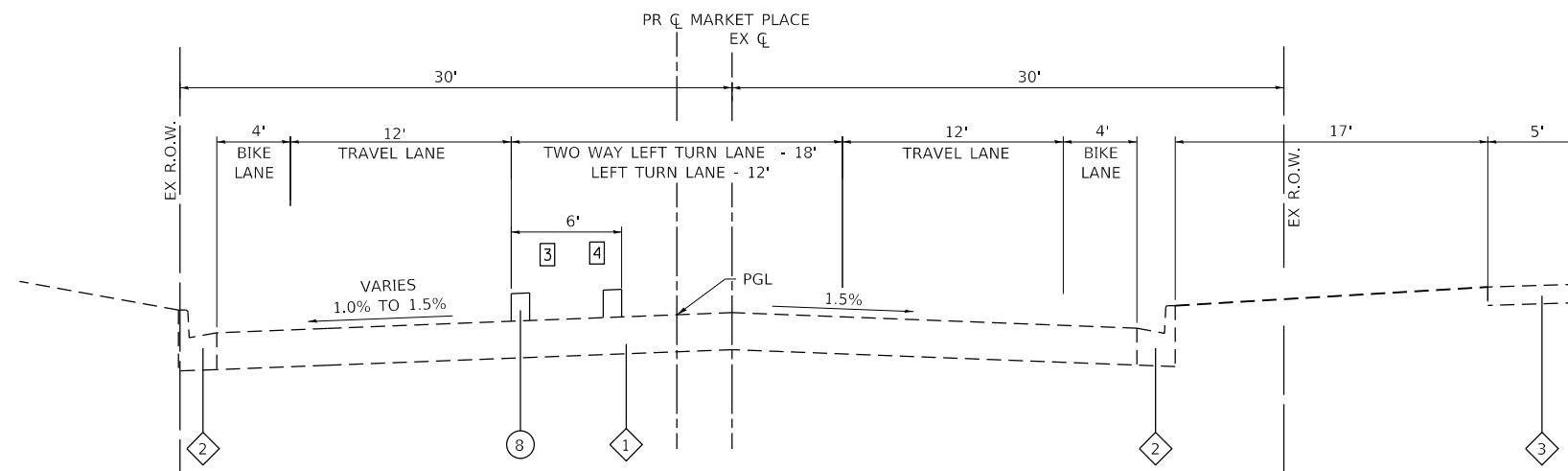


USER NAME = brian.heil	DESIGNED -	REVISED -
	DRAWN -	REVISED -
PLOT SCALE = 40.0000' / in.	CHECKED -	REVISED -
PLOT DATE = 1/26/2023	DATE -	REVISED -

**STATE OF ILLINOIS  
DEPARTMENT OF TRANSPORTATION**

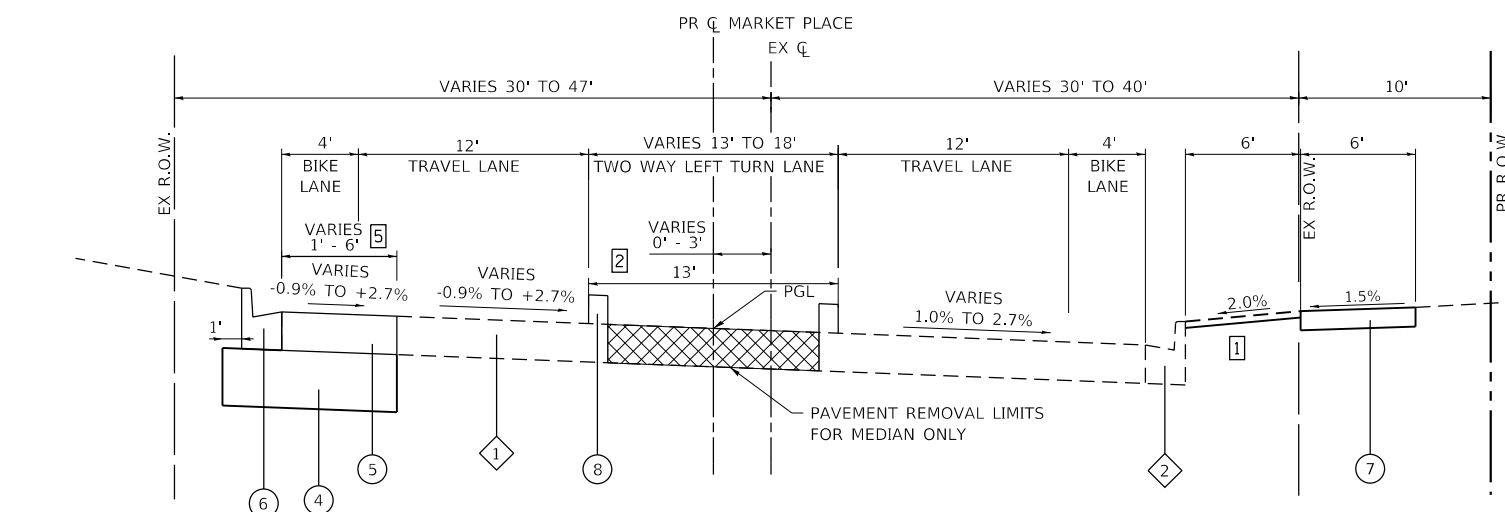
SCALE: NTS		SHEET 1 OF 2 SHEETS		TYPICAL SECTIONS	
				STA.	TO STA.

F.A.U. RTE.	SECTION	COUNTY	TOTAL SHEETS	SHEET NO.
9326	17-00042-02-RS	ST CLAIR	22	5
CONTRACT NO. 97803			ILLINOIS FED. AID PROJECT	



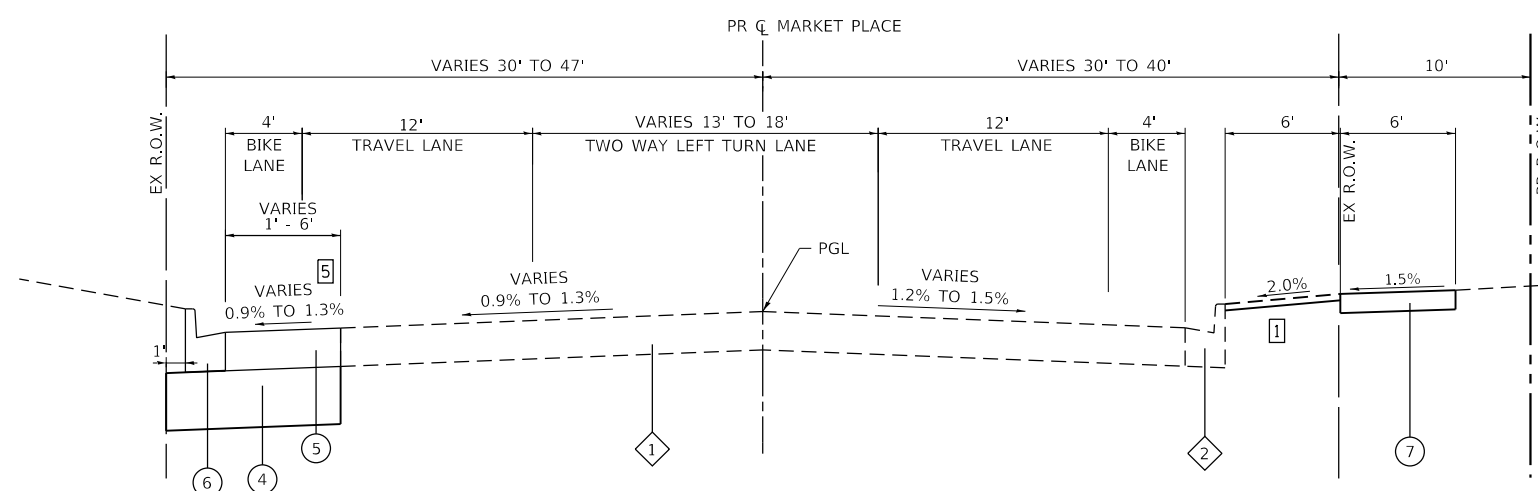
### PROPOSED MARKET PLACE

STA. 26+91 TO STA. 28+28



### PROPOSED MARKET PLACE

STA. 22+25 TO STA. 25+60



### PROPOSED MARKET PLACE

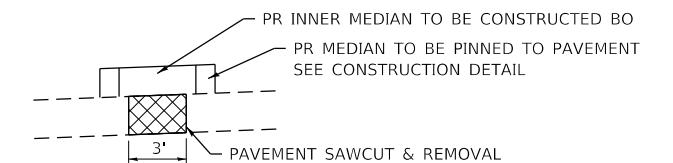
STA. 22+11 TO STA. 22+25  
STA. 25+60 TO STA. 26+91

### TYPICAL SECTION LEGEND

- ① EXISTING UNREINFORCED PCC PAVEMENT, 8"
- ② EXISTING COMBINATION CONCRETE CURB AND GUTTER, TYPE B-6.18
- ③ EXISTING SIDEWALK
- ④ PROPOSED AGGREGATE BASE COURSE, 12"
- ⑤ PROPOSED PORTLAND CEMENT CONCRETE PAVEMENT, 8" JOINTED
- ⑥ PROPOSED CONCRETE CURB AND GUTTER TYPE B-6.18
- ⑦ PROPOSED CONCRETE SIDEWALK, 4"
- ⑧ PROPOSED CONCRETE CURB SPECIAL (SEE CONSTRUCTION DETAIL)

### PROPOSED TYPICAL SECTION NOTES

- ① SOD TO BE INSTALLED BY OTHERS, LEAVE FINISHED SURFACE 1" LOW
- ② MEDIAN BEGINS AT STA. 23+31 AND ENDS AT STA. 23+68  
MEDIAN WIDTH (FOC TO FOC) - 13'
- ③ MEDIAN BEGINS AT STA. 27+57 AND ENDS AT STA. 28+28  
MEDIAN WIDTH (FOC TO FOC) - 6'
- ④ SAW CUT DETAIL FOR LIGHT POLE FOUNDATIONS AT THE FOLLOWING  
LOCATIONS. THE EXISTING PAVEMENT SHALL BE SAW CUT AND REMOVED  
FOR A LENGTH OF 4' AND A WIDTH OF 3'.  
-STA 27+65



- ⑤ SLOPE VARIES. SEE CROSS SECTIONS.

MODEL: Default; FILE NAME: I:\R221131 - MarketPlace Ph 3 - E:\reflow - ITC\CADD\Microstation\CAOD - Sheets\08221131-1-1-1-1-1-1-1.dgn



USER NAME = brian.heil	DESIGNED -	REVISED -
PLOT SCALE = 40.0000' / in.	DRAWN -	REVISED -
PLOT DATE = 1/26/2023	CHECKED -	REVISED -
	DATE -	REVISED -

DESIGNED -	REVISED -
DRAWN -	REVISED -
CHECKED -	REVISED -
DATE -	REVISED -

DESIGNED -	REVISED -
DRAWN -	REVISED -
CHECKED -	REVISED -
DATE -	REVISED -

STATE OF ILLINOIS  
DEPARTMENT OF TRANSPORTATION

TYPICAL SECTIONS

SCALE: NTS SHEET 2 OF 2 SHEETS STA. TO STA.

F.A.U. RTE.	SECTION	COUNTY	TOTAL SHEETS	SHEET NO.
9326	17-00042-02-R5	ST CLAIR	22	6
			CONTRACT NO. 97803	
ILLINOIS FED. AID PROJECT				

**CURB & GUTTER**

STATION	STATION	OFFSET	AGG BSE CSE B 12  (NOTES 1 & 2) (SQ YD)	COMB CURB GUTTER REM (FOOT)	COMB CC&G TB6.18 (FOOT)	CONC CURB SPL (FOOT)
22+11	26+91	LT		643	560	
23+31	23+68	LT/RT				89
23+38	23+55	RT	5	16	16	
23+84	24+90	RT	34	182	182	
26+30	27+04	RT	25	129	122	
27+57	28+28	LT/RT				145
28+26		LT		9		
<b>TOTAL</b>			<b>64</b>	<b>979</b>	<b>880</b>	<b>234</b>

**CURB & GUTTER NOTES:**

- THE QUANTITY SHOWN FOR AGGREGATE BASE COURSE, TYPE B 12" IS NOT THE TOTAL QUANTITY. SEE THE PAVEMENT SCHEDULE FOR THE REMAINING QUANTITY.
- THE AGGREGATE BASE COURSE, TYPE B 12" QUANTITY FOR STA. 22+11 TO STA 26+91 LT IS INCLUDED WITHIN THE AGGREGATE BASE COURSE, TYPE B 12" QUANTITY FOR PORTLAND CEMENT CONCRETE PAVEMENT 8" (JOINTED).

**EARTHWORK**

STATION	STATION	OFFSET	EARTH EXCAVATION  (CU YD)	EARTH EXCAVATION ADJUSTED FOR SHRINKAGE (NOTE 1) (CU YD)	EMBANKMENT  (NOTE 2) (CU YD)	EARTHWORK BALANCE WASTE (+) OR SHORTAGE (-)  (NOTE 3) (CU YD)
21+58	29+54	LT/RT	320	240	45	195
<b>TOTAL</b>			<b>320</b>	<b>240</b>	<b>45</b>	<b>195</b>

**EARTHWORK NOTES:**

- ESTIMATED SHRINKAGE FACTOR = 25%.
- APPROXIMATE EMBANKMENT QUANTITY IS SHOWN FOR INFORMATION ONLY.
- APPROXIMATE EARTHWORK BALANCE IS SHOWN FOR INFORMATION ONLY.

**ENTRANCE**

STATION  (NOTE 1)	OFFSET	ENTRANCE TYPE	ENTRANCE WIDTH "W" (NOTE 1)  (FOOT)	EXISTING SURFACE TYPE	AGG BSE CSE B 4  (SQ YD)	PCC DRIVEWAY PAVT 8 (NOTE 2)  (SQ YD)	DRIVEWAY PAVEMENT REM  (SQ YD)
22+71.9	LT	CE	25	HMA	63	53	66
24+50.8	RT	CE	26	HMA	161	143	143
25+65.3	LT	CE	21	HMA	58	49	85
26+52.5	LT	CE	36	HMA		9	28
26+77.5	RT	CE	38	HMA	127	118	123
<b>TOTAL</b>					<b>409</b>	<b>372</b>	<b>445</b>

**ENTRANCE NOTES:**

- PRIOR TO CONSTRUCTION, THE ENGINEER WILL CONTACT EACH PROPERTY OWNER AND VERIFY THE LOCATION AND WIDTH OF ALL ENTRANCES. THE CONTRACTOR SHALL CONFIRM THE FINAL LOCATIONS AND WIDTHS WITH THE ENGINEER PRIOR TO CONSTRUCTION. SEE CONSTRUCTION DETAILS SHEET FOR ENTRANCE DETAILS.
- DEPRESSED CURB AND GUTTER THROUGH ENTRANCES SHALL BE MEASURED FOR PAYMENT AS COMBINATION CONCRETE CURB AND GUTTER, TYPE B-6.18.

**PAVEMENT**

STATION	STATION	OFFSET	AGG BSE CSE B 12  (SQ YD)	PCC PVT 8 JOINTED  (SQ YD)	TIE BARS 3/4  (EACH)	DOWEL BARS 1 1/4  (EACH)	SAW CUTS  (FOOT)	CLASS B PATCH T1 8  (SQ YD)	CLASS B PATCH T2 8  (SQ YD)	CLASS B PATCH T3 8  (SQ YD)	CLASS B PATCH T4 8  (SQ YD)	PAVEMENT REM  (SQ YD)	BOLLARD REM  (EACH)
21+89	22+29	LT/RT			27	44	126				34		
21+96	22+32	LT			26	9	81			16			
22+11	26+91	LT	379	213									
22+91	22+97	LT/RT				6	20	3					
23+13	23+19	LT				54	79			22			
23+24		RT											1
23+27		RT											1
23+31	23+68	LT/RT										40	
23+34	23+72	RT			26	9	82			16			
23+36	23+60	LT			18	9	58		11				
23+71	24+98	LT/RT			85	32	280				60		
23+82	24+26	RT			28	9	92			19			
24+08	24+14	RT				2	16	1					
24+25	24+33	RT				2	20	2					
25+33	25+55	LT			16	6	52		10				
25+35	25+39	LT				4	14	1					
25+55	25+89	LT/RT			32	35	133				23		
25+93	25+97	LT/RT				36	53		10				
26+16	26+46	LT			22	3	66		7				
26+32	26+77	RT			32	9	98				20		
26+59	26+73	RT				6	38		7				
26+73	26+91	LT										10	
26+99	29+52	LT/RT			192	136	688				151		
27+13	28+19	LT			68	56	267				35		
27+64	27+69	LT/RT										2	
27+90	27+94	RT				18	30		5				
28+10	28+14	RT				18	30		5				
28+50	28+54	RT				18	30		5				
29+15	29+19	LT				4	14	1					
<b>TOTAL</b>			<b>379</b>	<b>213</b>	<b>572</b>	<b>525</b>	<b>2,367</b>	<b>8</b>	<b>60</b>	<b>116</b>	<b>280</b>	<b>52</b>	<b>2</b>

**PAVEMENT NOTES:**

- THE QUANTITY SHOWN FOR AGGREGATE BASE COURSE, TYPE B 12" IS NOT THE TOTAL QUANTITY. SEE THE CURB & GUTTER SCHEDULE FOR THE REMAINING QUANTITY.

**SIGN**

STATION	OFFSET	TYPE	DESCRIPTION	SIZE  (IN X IN)	SIGN PANEL T1  (SQ FT)	TELES STL SIN SUPPORT  (FOOT)
23+07	RT	R2-1	SPEED LIMIT SIGN	24 X 30	5.0	16.0
23+41	RT	W11-2	PEDESTRIAN	30 X 30	6.3	17.0
		W16-7P	DOWNWARD DIAGONAL ARROW	24 X 12	2.0	
23+56	LT	W11-2	PEDESTRIAN	30 X 30	6.3	17.0
		W16-7P	DOWNWARD DIAGONAL ARROW	24 X 12	2.0	
<b>TOTAL</b>					<b>21.6</b>	<b>50.0</b>

**ADJUSTMENTS**

STATION	OFFSET	WATER VALVES ADJUST  (EACH)	DOM MET VLTS ADJ  (EACH)	MAN ADJUST  (EACH)
23+21	RT	1		
23+36	RT	1		
23+71	RT	1		
24+08	RT		1	
24+11	RT		1	
26+10	RT	1		
26+18	RT			1
<b>TOTAL</b>		<b>4</b>	<b>2</b>	<b>1</b>

MODEL: Default; FILE NAME: I:\R221131 - Marked\Place Ph 3 - Entree\HW\CADD\Microstation\CADD\_Sheets\08221131-1-htc-schedule.dgn



USER NAME = brian.heil	DESIGNED -	REVISED -
	DRAWN -	REVISED -
PLOT SCALE = 40.0000' / in.	CHECKED -	REVISED -
PLOT DATE = 1/26/2023	DATE -	REVISED -

STATE OF ILLINOIS  
DEPARTMENT OF TRANSPORTATION

SCHEDULES OF QUANTITIES

SCALE: SHEET 1 OF 2 SHEETS STA. TO STA.

F.A.U RTE.	SECTION	COUNTY	TOTAL SHEETS	SHEET NO.
932E	17-00042-02-R5	ST CLAIR	22	7
CONTRACT NO. 97803				
ILLINOIS		FED. AID PROJECT		

**PAVEMENT MARKING**

STATION	STATION	OFFSET	COMMENT	COLOR	TEMP PVT MK L&S PNT (NOTE 1) (SQ FT)	TEMP PVT MK LINE 4 (NOTE 1) (FOOT)	TEMP PVT MK LINE 12 (NOTE 1) (FOOT)	TEMP PVT MK LINE 24 (NOTE 1) (FOOT)	MOD URETH PM LTR-SYM (NOTE 1) (SQ FT)	MOD URETH PM LINE 4 (NOTE 1) (FOOT)	MOD URETH PM LINE 12 (NOTE 1) (FOOT)	MOD URETH PM LINE 24 (NOTE 1) (FOOT)	CURB REFLECTORS (EACH)	PAINT CURB (FOOT)	PAVMT MRKG REM WTR BL (SQ FT)
21+08	27+60	LT	TWO WAY LEFT TURN LANE LINE	YELLOW		816				816					272
21+08	27+57	LT	EX TWO WAY LEFT TURN LANE LINE												247
21+83	22+36	LT	2' - 6' SKIP DASH	WHITE		13				13					5
21+83	22+11	RT	2' - 6' SKIP DASH	WHITE		7				7					3
21+83	22+11	RT	EX BIKE LANE LINE												10
22+12		RT	BIKE LANE	WHITE	9.2				9.2						9
22+36	29+47	LT	SOLID	WHITE		719				719					240
23+31	23+68	LT/RT	MEDIAN										12	73	
23+43	23+55	LT/RT	CROSSWALK	WHITE				36				36			72
24+36		LT	BIKE LANE	WHITE	9.2				9.2						9
26+86	28+21	LT	EX SOLID LANE LINE												46
27+17		RT	BIKE LANE	WHITE	9.2				9.2						9
27+57	28+28	LT/RT	MEDIAN										3	9	
27+90	29+40	RT	SOLID	WHITE		48				48					16
28+11	28+28	LT	EX DOUBLE CENTERLINE												12
28+28	29+44	LT	EX SOLID LANE LINE												46
28+36		RT	LEFT TURN ARROW	WHITE	8.8				8.8						9
28+92	29+40	RT	SOLID	WHITE		150				150					50
29+18		RT	LEFT TURN ARROW	WHITE	8.8				8.8						9
29+40		RT	STOP LINE	WHITE				27				27			54
29+42		LT	BIKE LANE	WHITE	9.2				9.2						9
29+47	29+54	LT/RT	CROSSWALK	WHITE				99			99				99
TOTAL					54.4	1,753	99	63	54.4	1,753	99	63	15	82	1,226

PAVEMENT MARKING NOTES:

1. SEE HIGHWAY STANDARD 780001 FOR PAVEMENT MARKING DETAILS.

**SIDEWALK**

STATION	STATION	OFFSET	PC CONC SIDEWALK 4 (SQ FT)	DETECTABLE WARNINGS (SQ FT)
21+58	26+53	RT	2,730	12
22+98	23+55	LT	688	24
23+31	23+68	LT/RT	116	24
TOTAL			3,534	60

SIDEWALK NOTES:

1. SIDEWALK RAMPS ACCESSIBLE TO THE DISABLED ARE REQUIRED. SEE PLAN SHEETS FOR LOCATIONS AND TYPES. SEE CONSTRUCTION DETAILS SHEET AND HIGHWAY STANDARD 424001, 424016, 424026, AND 424031 FOR CURB RAMP DETAILS.

**DRAINAGE**

STATION	STATION	OFFSET	METAL FL END SEC 8 (EACH)	P CUL CL C 1 8 (FOOT)	MAN TA 4 DIA T3 F&G (EACH)	INLETS ADJ NEW T1F CL (EACH)	REMOV INLETS (EACH)
23+00		LT	1				
23+00	23+04	LT		12			
23+04		LT	1				
22+30		LT			1		1
23+44		LT	1				
23+44	23+58	LT		12			
23+58		LT	1				
25+96		RT				1	
TOTAL			4	24	1	1	1

**EROSION CONTROL**

STATION	STATION	OFFSET	TEMP EROS CONTR SEED (NOTE 1) (POUND)	INLET & PIPE PROTECTION (EACH)
21+57	27+05	RT	38	
21+72	26+08	LT	38	
22+30		LT		1
22+30		RT		1
22+94		LT		1
23+04		LT		1
23+58		LT		1
23+94		RT		1
24+55		RT		1
25+97		LT		1
26+96		LT		1
26+96		RT		1
TOTAL			76	10

EROSION CONTROL NOTES:

1. THE QUANTITY FOR TEMPORARY EROSION CONTROL SEEDING ASSUMES TWO SEPARATE APPLICATIONS AT A RATE OF 100 POUNDS/ACRE PER APPLICATION. THE CONTRACTOR SHALL APPLY AS NECESSARY AND AS DIRECTED BY THE ENGINEER IN THE FIELD.

MODEL: Default  
FILE NAME: I:\p\221131 - MarkedPlace Ph 3 - Erdrefew Hrc\CAADD\Microstation\CAADD Sheets\08221131-14hrc-schedule.dgn  
ILLINOIS DESIGN FIRM LICENSE NO.: 184.001115



USER NAME = brian.heil
PLOT SCALE = 40.0000 ' / in.
PLOT DATE = 1/26/2023

DESIGNED -	REVISED -
DRAWN -	REVISED -
CHECKED -	REVISED -
DATE -	REVISED -

REVISIONS

**STATE OF ILLINOIS  
DEPARTMENT OF TRANSPORTATION**

**SCHEDULES OF QUANTITIES**

SCALE:	SHEET 2 OF 2 SHEETS	STA.	TO STA.
--------	---------------------	------	---------

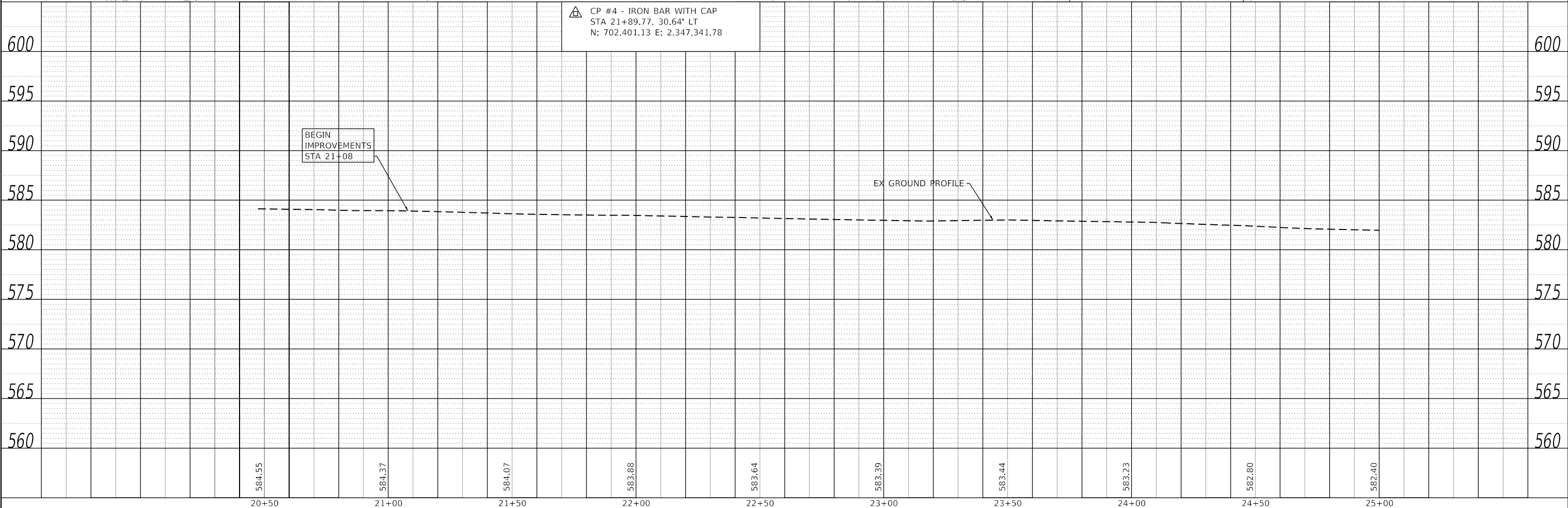
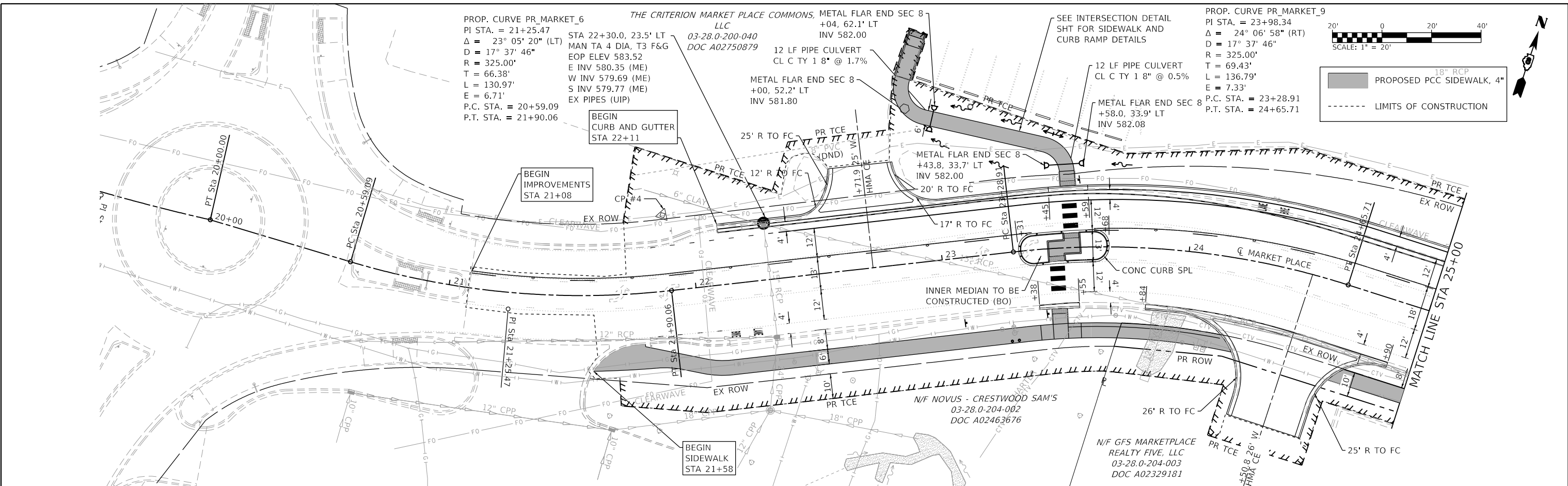
F.A.U. RTE.	SECTION	COUNTY	TOTAL SHEETS	SHEET NO.
9326	17-00042-02-R5	ST CLAIR	22	8
ILLINOIS				FED. AID PROJECT
CONTRACT NO. 97803				



PLAN	SURVEYED	DATE
	PLOTTED	
	ALIGNED	
	CHECKED	
	FILED	
	CADD FILE NAME	
	NO.	

PROFILE	SURVEYED	DATE
	PLOTTED	
	GRADES	
	CHECKED	
	STRUCTURE	
	NOTATIONS	
	NO.	

MODEL: SHT 1  
 FILE NAME: H:\221131 - Marketplace - Marketplace\_03 - Fairview\_HTS\CADD\IMC\creation\CADD\_Sheets\0221131-1sht-prflrfgn



**OATES ASSOCIATES**  
 ILLINOIS DESIGN FIRM LICENSE NO.: 184.001115

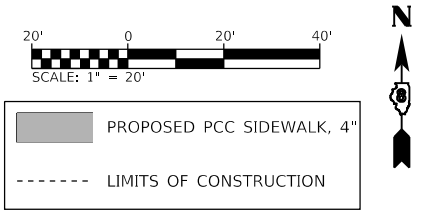
USER NAME = briar,heil	DESIGNED -	REVISED -
PLOT SCALE = 40.0000' / in.	DRAWN -	REVISED -
PLOT DATE = 1/26/2023	CHECKED -	REVISED -
	DATE -	REVISED -

**STATE OF ILLINOIS  
 DEPARTMENT OF TRANSPORTATION**

**PLAN & PROFILE SHEETS**

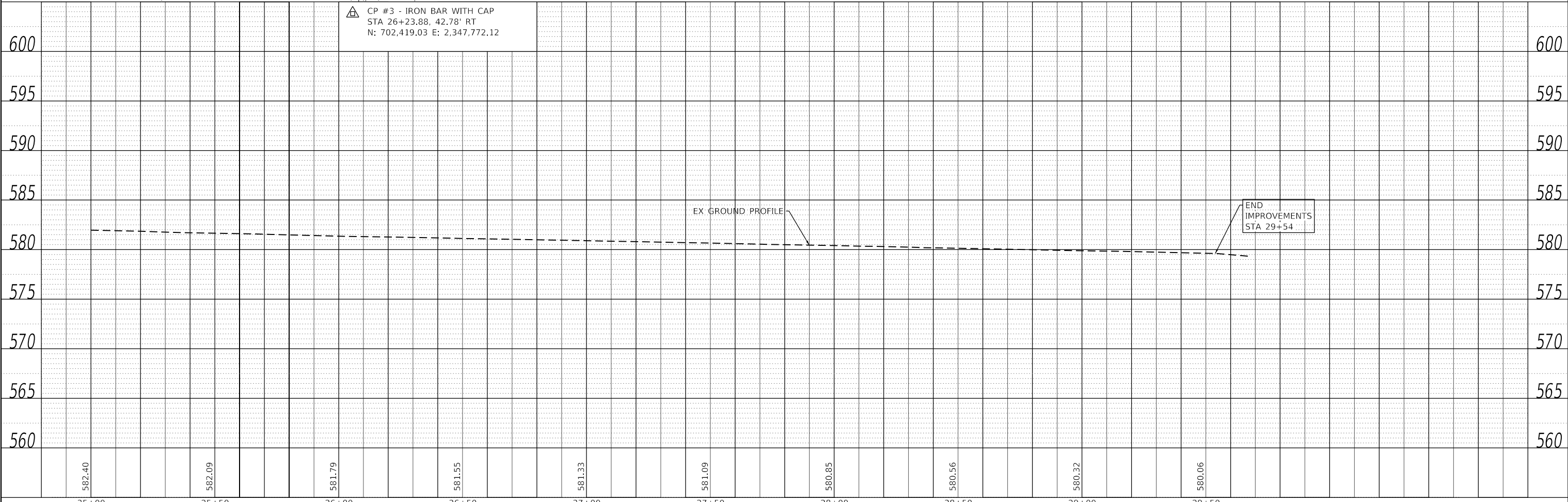
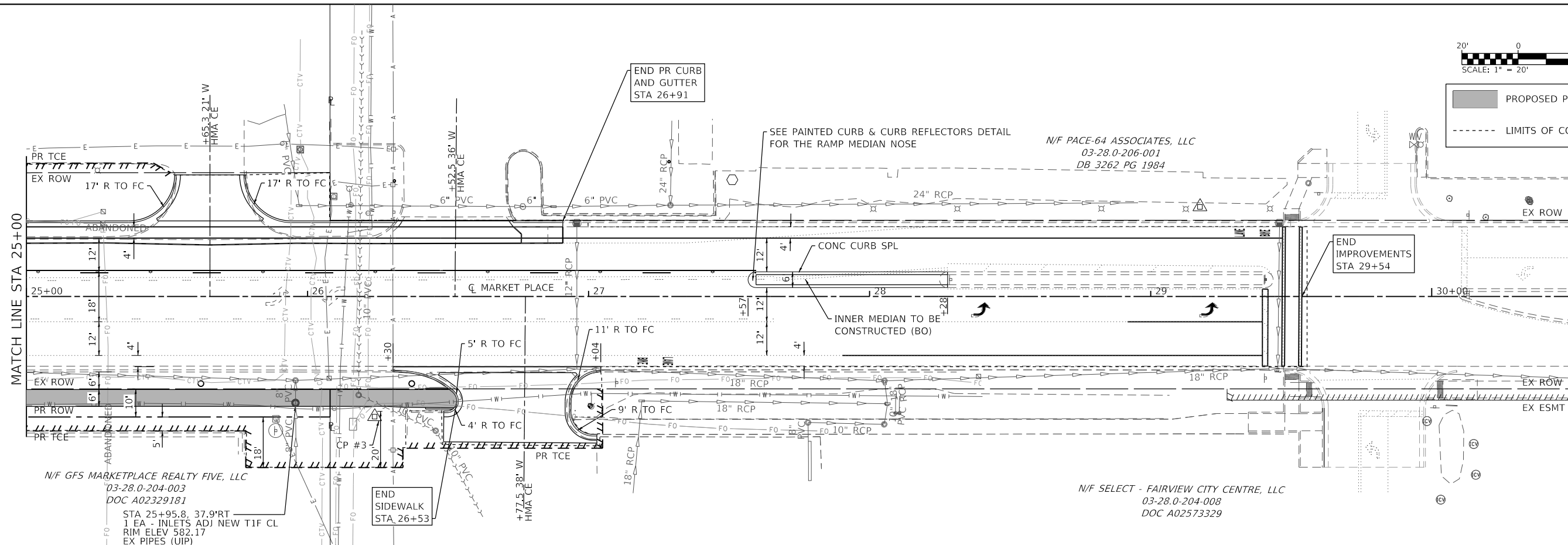
SCALE: 1" = 20'    SHEET 1 OF 2 SHEETS    STA. 19+50 TO STA. 25+00

F.A.U. RTE.	SECTION	COUNTY	TOTAL SHEETS	SHEET NO.
9326	17-00042-02-RS	ST CLAIR	22	9
CONTRACT NO. 97803				
ILLINOIS		FED. AID PROJECT		



PLAN	SURVEYED	DATE
	PLOTTED	
	ALIGNED	
	CHECKED	
	FILE NAME	
	NO.	

PROFILE	SURVEYED	DATE
	PLOTTED	
	GRADES	
	CHECKED	
	STRUCTURE	
	NOTATION	
	NO.	



MODEL SHIT 2  
FILE NAME: H:\221131 - MarketPlace Ph 3 - Fairview\_HTS\CADD\Microstation\CADD\_Sheets\221131-1-hts-ph3-prf.dgn

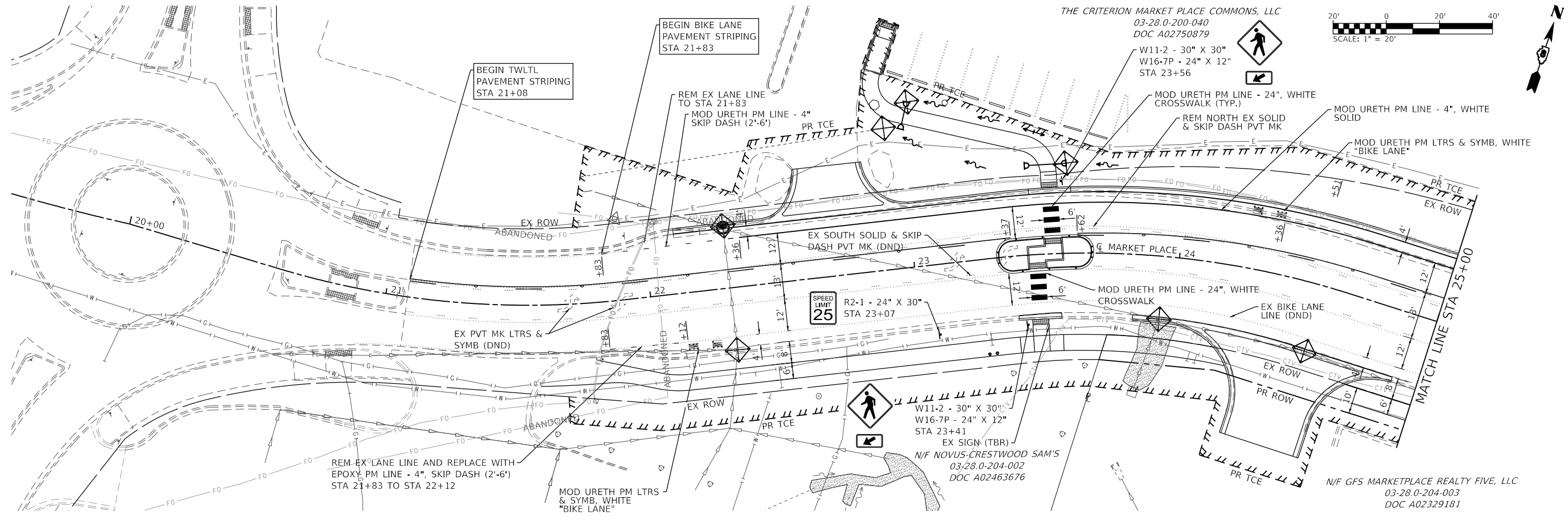


USER NAME = brian.heil	DESIGNED -	REVISED -
	DRAWN -	REVISED -
PLOT SCALE = 40,0000' / in.	CHECKED -	REVISED -
PLOT DATE = 3/29/2023	DATE -	REVISED -

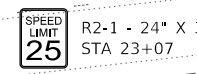
**STATE OF ILLINOIS  
DEPARTMENT OF TRANSPORTATION**

<b>PLAN &amp; PROFILE SHEETS</b>			
SCALE: 1" = 20'	SHEET 2	OF 2	SHEETS
STA. 25+00			TO STA. 30+50

F.A.U. RTE.	SECTION	COUNTY	TOTAL SHEETS	SHEET NO.
9326	17-00042-02-RS	ST CLAIR	22	10
				CONTRACT NO. 97803
				ILLINOIS FED. AID PROJECT



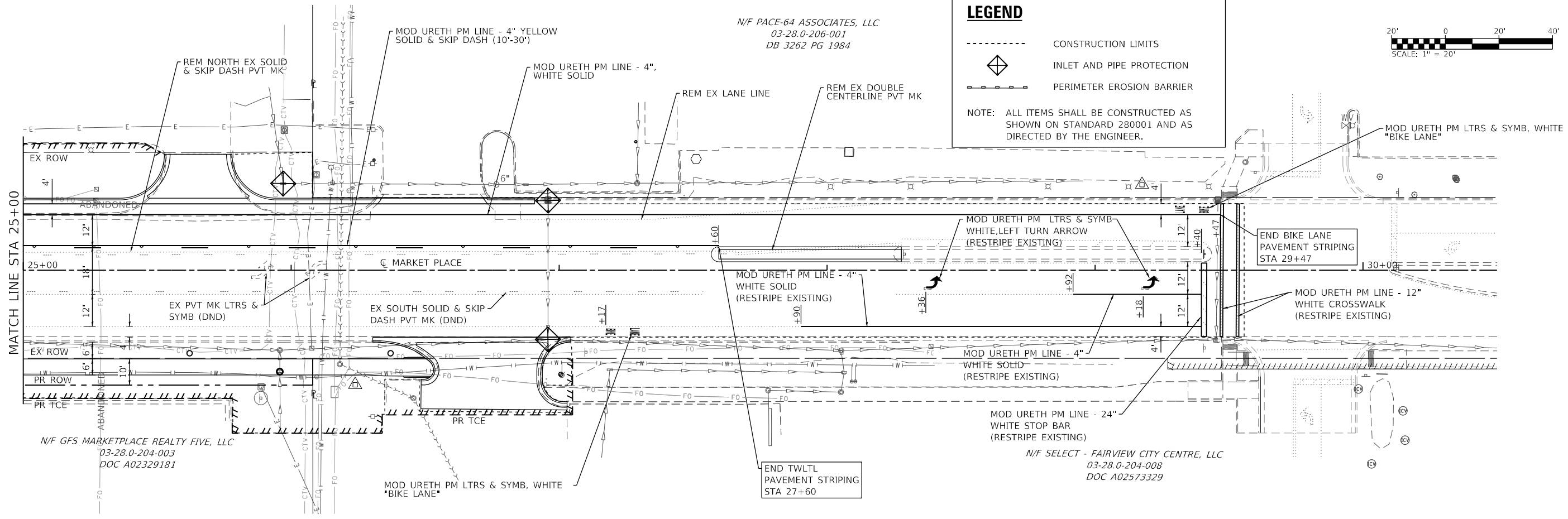
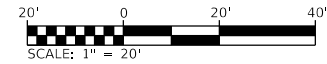
THE CRITERION MARKET PLACE COMMONS, LLC  
03-28.0-200-040  
DOC A02750879



**LEGEND**

- CONSTRUCTION LIMITS
- ◊ INLET AND PIPE PROTECTION
- - - PERIMETER EROSION BARRIER

NOTE: ALL ITEMS SHALL BE CONSTRUCTED AS SHOWN ON STANDARD 280001 AND AS DIRECTED BY THE ENGINEER.



N/F PACE-64 ASSOCIATES, LLC  
03-28.0-206-001  
DB 3262 PG 1984

N/F GFS MARKETPLACE REALTY FIVE, LLC  
03-28.0-204-003  
DOC A02329181

N/F SELECT - FAIRVIEW CITY CENTRE, LLC  
03-28.0-204-008  
DOC A02573329

MODEL: SUT 1  
FILE NAME: I:\R221131 - MarketPlace Ph 3 - Fairview ITC\CADD\Microstation\CADD Sheets\08221131-I-ctb-crop-pmk.dgn



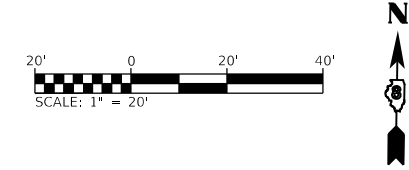
USER NAME = brian.heil	DESIGNED -	REVISED -
PLOT SCALE = 40.0000' / in.	DRAWN -	REVISED -
PLOT DATE = 3/29/2023	CHECKED -	REVISED -
	DATE -	REVISED -

STATE OF ILLINOIS  
DEPARTMENT OF TRANSPORTATION

EROSION CONTROL, PAVEMENT MARKING, AND SIGNING SHEET

SCALE: 1" = 20' SHEET 1 OF 1 SHEETS STA. 19+50 TO STA. 30+50

F.A.U. RTE.	SECTION	COUNTY	TOTAL SHEETS	SHEET NO.
9326	17-00042-02-RS	ST CLAIR	22	11
CONTRACT NO. 97803				
ILLINOIS FED. AID PROJECT				

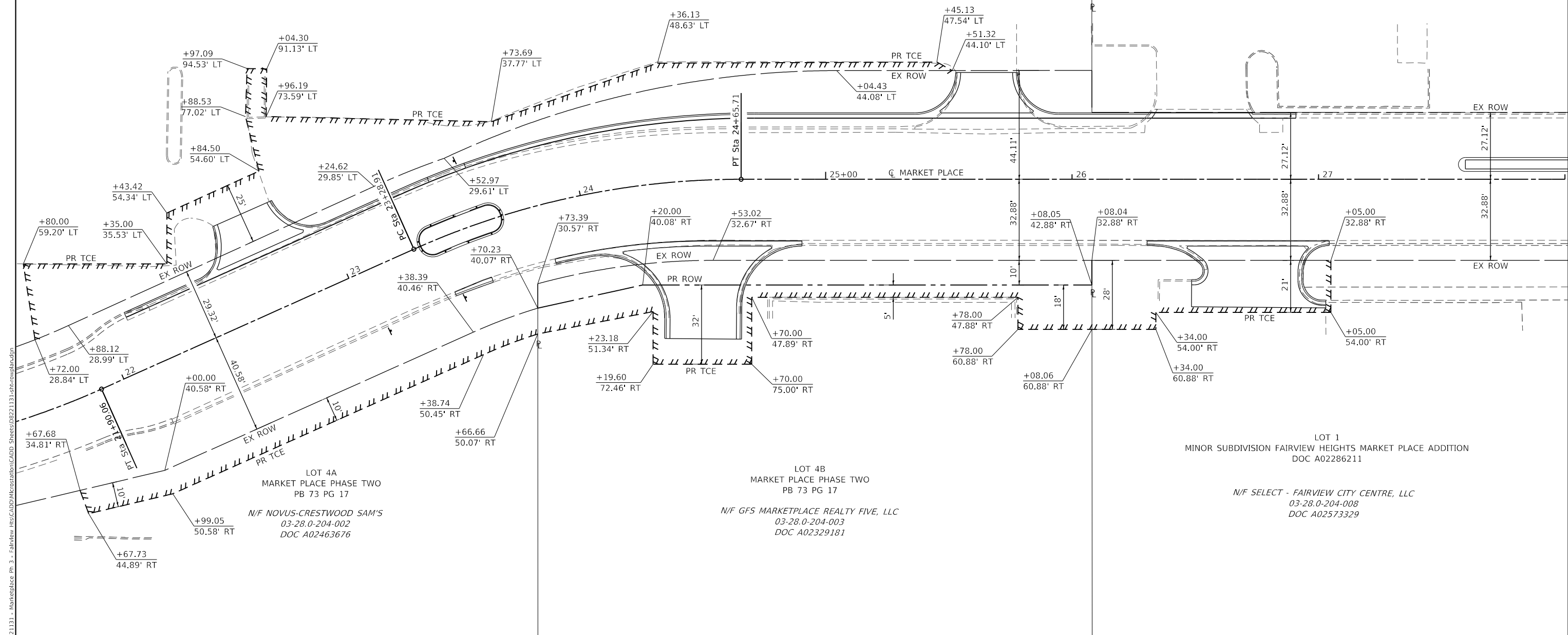


RIGHT OF WAY LEGEND	
	EXISTING RIGHT OF WAY LINE
	PROPOSED RIGHT OF WAY LINE
	PROPOSED PERM EASEMENT LINE
	PROPOSED TEMPORARY CONSTRUCTION EASEMENT LINE
	PROPERTY LINE
	CONSTRUCTION LIMITS

PROP. CURVE PR\_MARKET\_9  
 PI STA. = 23+98.34  
 $\Delta = 24^\circ 06' 58''$  (RT)  
 $D = 17^\circ 37' 46''$   
 $R = 325.00'$   
 $T = 69.43'$   
 $L = 136.79'$   
 $E = 7.33'$   
 P.C. STA. = 23+28.91  
 P.T. STA. = 24+65.71

THE CRITERION MARKET PLACE COMMONS, LLC  
 03-28.0-200-040  
 DOC A02750879

N/F PACE-64 ASSOCIATES, LLC  
 03-28.0-206-001  
 DB 3262 PG 1984



LOT 4A  
 MARKET PLACE PHASE TWO  
 PB 73 PG 17  
 N/F NOVUS-CRESTWOOD SAM'S  
 03-28.0-204-002  
 DOC A02463676

LOT 4B  
 MARKET PLACE PHASE TWO  
 PB 73 PG 17  
 N/F GFS MARKETPLACE REALTY FIVE, LLC  
 03-28.0-204-003  
 DOC A02329181

LOT 1  
 MINOR SUBDIVISION FAIRVIEW HEIGHTS MARKET PLACE ADDITION  
 DOC A02286211  
 N/F SELECT - FAIRVIEW CITY CENTRE, LLC  
 03-28.0-204-008  
 DOC A02573329

MODEL: SUT\_1  
 FILE NAME: H:\R221131 - MarketPlace Ph 3 - Fairview HTR\CAD\Microstation\CAAD\_Sheets\08221131-Ltr-construction.dgn



USER NAME = brian.heil	DESIGNED -	REVISED -
PLOT SCALE = 40.0000' / in.	DRAWN -	REVISED -
PLOT DATE = 3/29/2023	CHECKED -	REVISED -
	DATE -	REVISED -

STATE OF ILLINOIS  
 DEPARTMENT OF TRANSPORTATION

RIGHT OF WAY PLAN SHEET

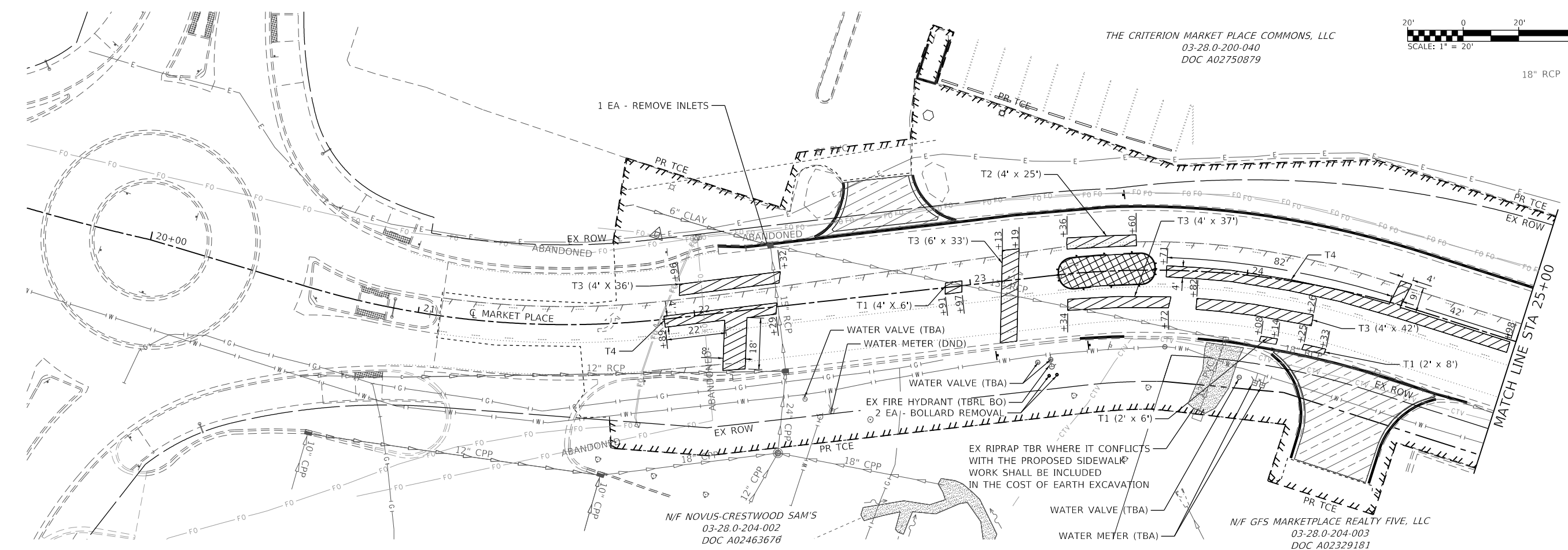
SCALE: 1" = 20' SHEET 1 OF 1 SHEETS STA. TO STA.

F.A.U. RTE.	SECTION	COUNTY	TOTAL SHEETS	SHEET NO.
9326	17-00042-02-R5	ST CLAIR	22	12
			CONTRACT NO. 97803	
		ILLINOIS	FED. AID PROJECT	

THE CRITERION MARKET PLACE COMMONS, LLC  
03-28.0-200-040  
DOC A02750879



18" RCP

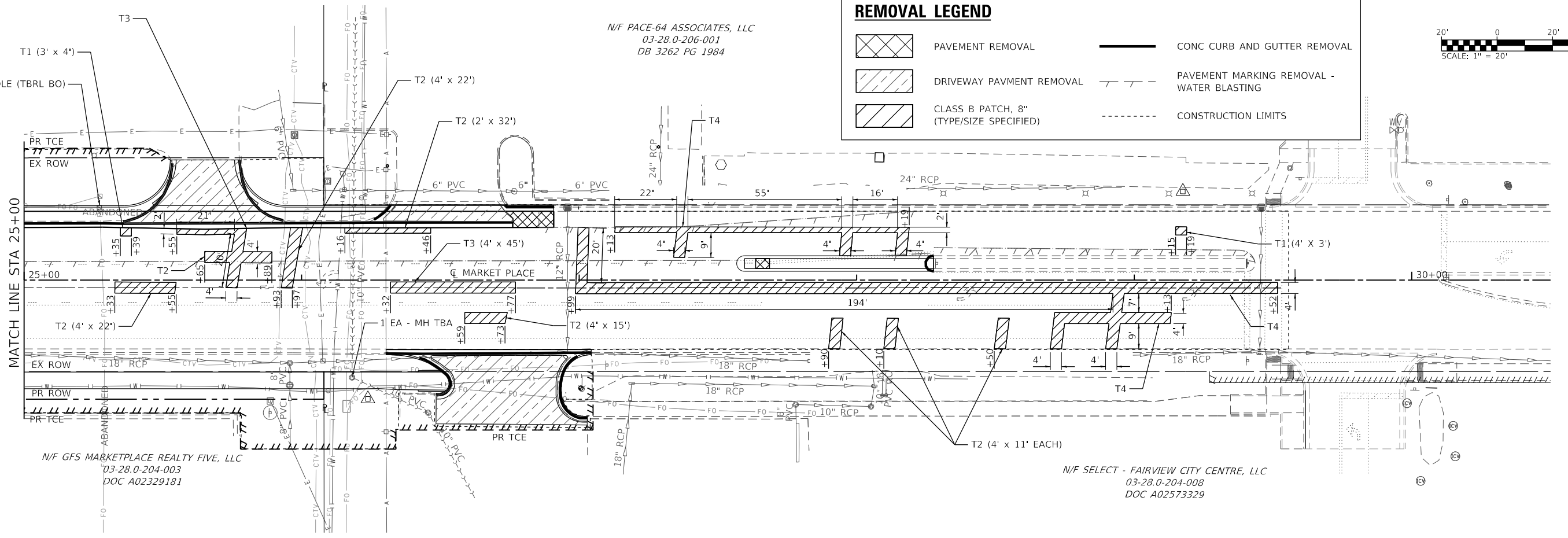
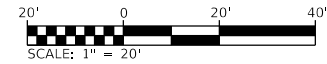


N/F NOVUS-CRESTWOOD SAM'S  
03-28.0-204-002  
DOC A02463678

N/F GFS MARKETPLACE REALTY FIVE, LLC  
03-28.0-204-003  
DOC A02329181

**REMOVAL LEGEND**

- PAVEMENT REMOVAL
- DRIVEWAY PAVMENT REMOVAL
- CLASS B PATCH, 8" (TYPE/SIZE SPECIFIED)
- CONC CURB AND GUTTER REMOVAL
- PAVEMENT MARKING REMOVAL - WATER BLASTING
- CONSTRUCTION LIMITS



N/F PACE-64 ASSOCIATES, LLC  
03-28.0-206-001  
DB 3262 PG 1984

N/F GFS MARKETPLACE REALTY FIVE, LLC  
03-28.0-204-003  
DOC A02329181

N/F SELECT - FAIRVIEW CITY CENTRE, LLC  
03-28.0-204-008  
DOC A02573329

MODEL: SUT 1  
FILE NAME: I:\R221131 - Marketplace Ph 3 - EIR\Draw HRC\ADD\Microstation\CADD Sheets\08221131-Sub-removal.dgn



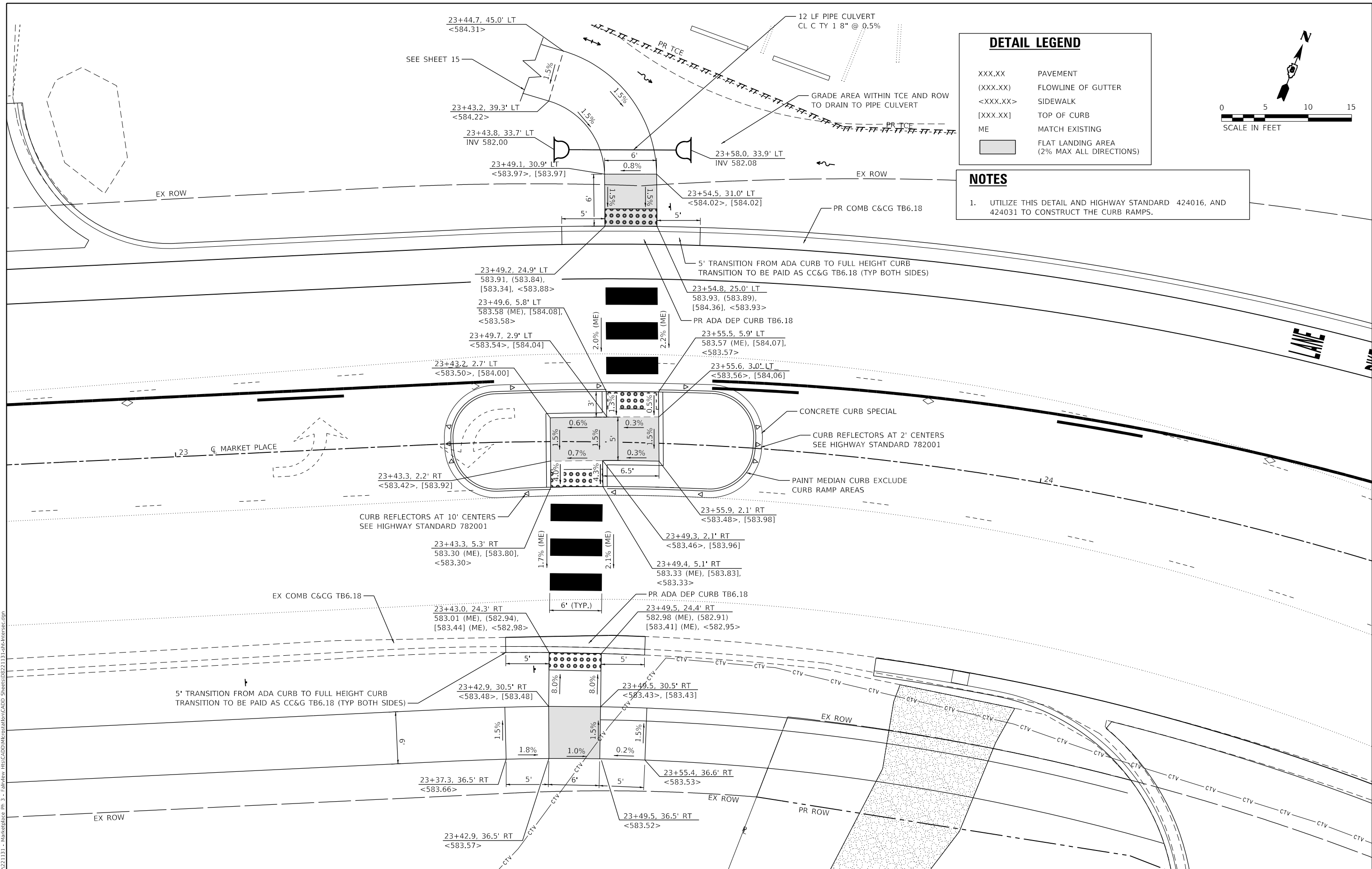
USER NAME = brian.heil	DESIGNED -	REVISED -
PLOT SCALE = 40.0000' / in.	DRAWN -	REVISED -
PLOT DATE = 3/29/2023	CHECKED -	REVISED -
	DATE -	REVISED -

**STATE OF ILLINOIS  
DEPARTMENT OF TRANSPORTATION**

**REMOVAL PLAN SHEET**

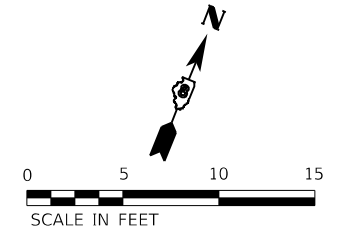
SCALE: 1" = 20' SHEET 1 OF 1 SHEETS STA. 19+50 TO STA. 30+50

F.A.U. RTE.	SECTION	COUNTY	TOTAL SHEETS	SHEET NO.
9326	17-00042-02-R5	ST CLAIR	22	13
CONTRACT NO. 97803				
ILLINOIS FED. AID PROJECT				



**DETAIL LEGEND**

- XXX.XX PAVEMENT
- (XXX.XX) FLOWLINE OF GUTTER
- <XXX.XX> SIDEWALK
- [XXX.XX] TOP OF CURB
- ME MATCH EXISTING
- FLAT LANDING AREA (2% MAX ALL DIRECTIONS)



**NOTES**

- UTILIZE THIS DETAIL AND HIGHWAY STANDARD 424016, AND 424031 TO CONSTRUCT THE CURB RAMPS.

MODEL: SUT 1  
 FILE NAME: I:\R221131 - MarketPlace Ph 3 - EIR\Draw HRC\CADD\Microstation\CADD Sheets\DR221131-Sub-Intersec.dgn



USER NAME = brian.heil	DESIGNED -	REVISED -
PLOT SCALE = 10.0000' / in.	DRAWN -	REVISED -
DATE = 1/26/2023	CHECKED -	REVISED -
	DATE -	REVISED -

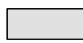
**STATE OF ILLINOIS**  
**DEPARTMENT OF TRANSPORTATION**

**INTERSECTION DETAILS**  
 SCALE: 1" = 5'  
 SHEET 1 OF 2 SHEETS  
 STA. TO STA.

F.A.U. RTE. 9326	SECTION 17-00042-02-RS	COUNTY ST CLAIR	TOTAL SHEETS 22	SHEET NO. 14
CONTRACT NO. 97803			ILLINOIS FED. AID PROJECT	

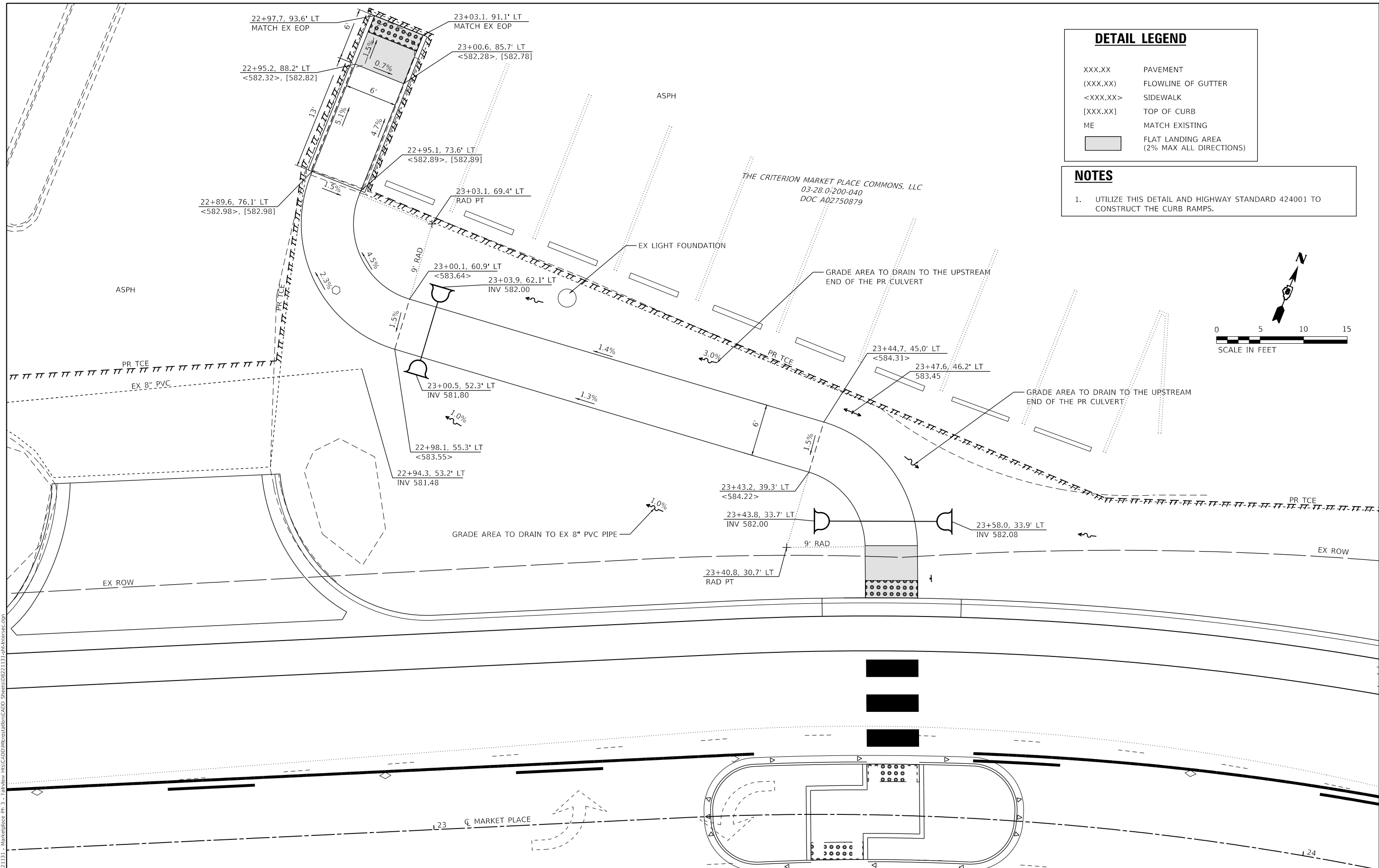
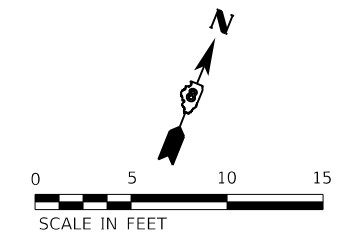


**DETAIL LEGEND**

XXX.XX	PAVEMENT
(XXX.XX)	FLOWLINE OF GUTTER
<XXX.XX>	SIDEWALK
[XXX.XX]	TOP OF CURB
ME	MATCH EXISTING
	FLAT LANDING AREA (2% MAX ALL DIRECTIONS)

**NOTES**

- UTILIZE THIS DETAIL AND HIGHWAY STANDARD 424001 TO CONSTRUCT THE CURB RAMPS.



MODEL: SUT 2  
 FILE NAME: I:\R221131 - Marketplace Ph 3 - EIR.dwg  
 I:\CADD\Microstation\CADD Sheets\08221131-1-1.dwg  
 I:\CADD\Microstation\CADD Sheets\08221131-1-1.dwg



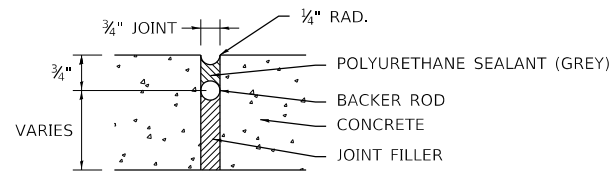
USER NAME = brian.heil	DESIGNED -	REVISED -
PLOT SCALE = 10.0000 ' / in.	DRAWN -	REVISED -
DATE = 1/26/2023	CHECKED -	REVISED -
	DATE -	REVISED -

**STATE OF ILLINOIS  
DEPARTMENT OF TRANSPORTATION**

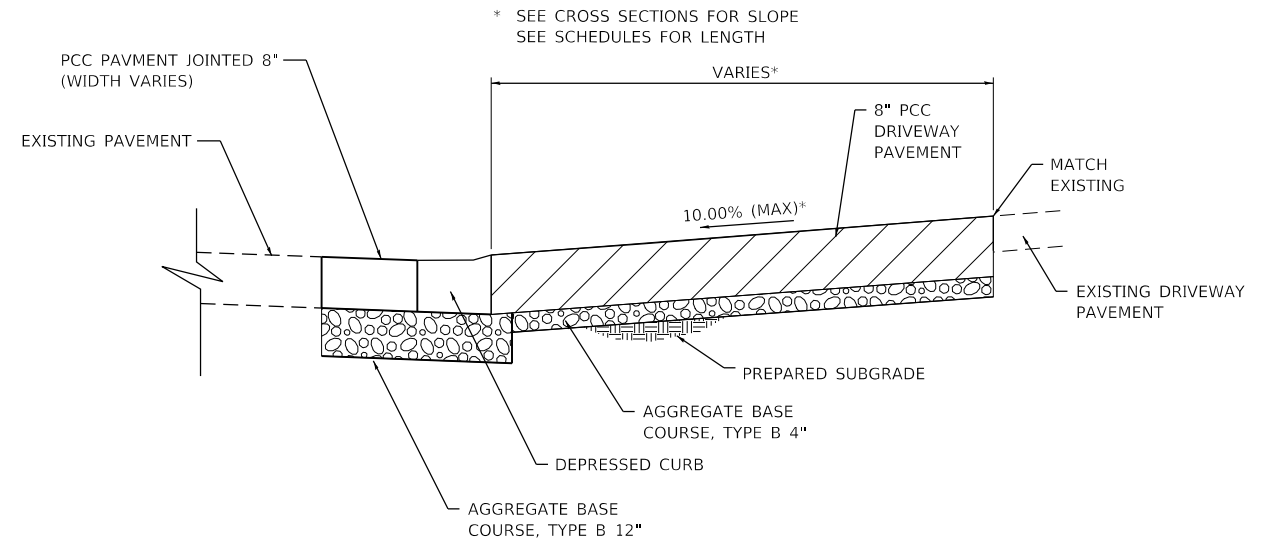
**INTERSECTION DETAILS**

SCALE: 1" = 5'    SHEET 2 OF 2 SHEETS    STA.    TO STA.

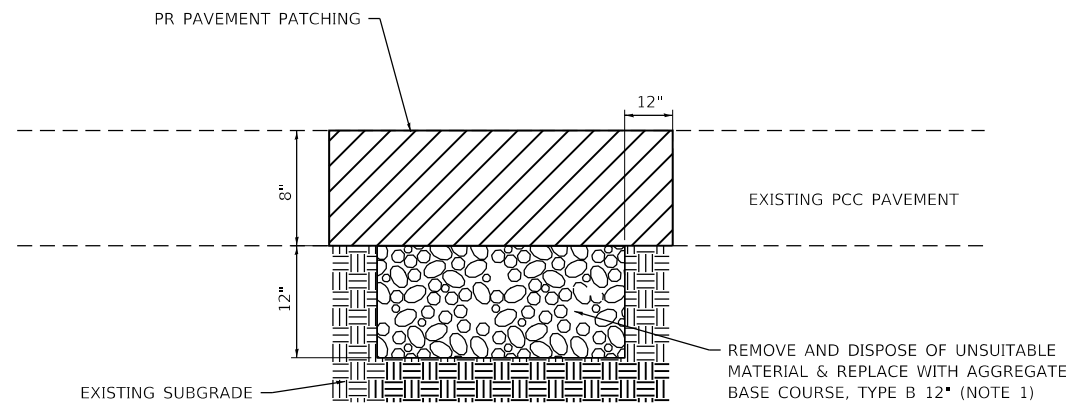
F.A.U. RTE.	SECTION	COUNTY	TOTAL SHEETS	SHEET NO.
9326	17-00042-02-RS	ST CLAIR	22	15
			CONTRACT NO. 97803	
ILLINOIS FED. AID PROJECT				



**EXPANSION JOINT DETAIL**  
(NOT TO SCALE)



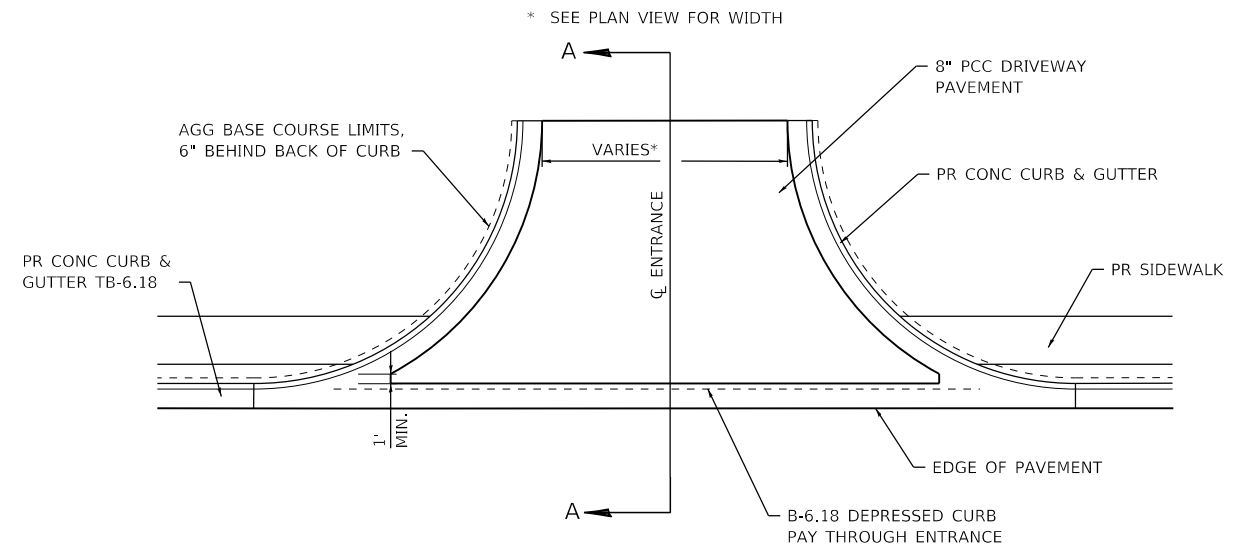
**SECTION A-A**  
(NOT TO SCALE)



**PAVEMENT PATCHING**  
(NOT TO SCALE)

**PATCHING NOTES:**

1. THE ENGINEER IN THE FIELD WILL DETERMINE WHICH PATCHES (IF ANY) REQUIRE THIS WORK. AN ESTIMATED QUANTITY FOR THIS SUBGRADE REMEDIATION WORK IS INCLUDED IN THE CONTRACT.



**COMMERCIAL ENTRANCE**  
(NOT TO SCALE)

STA. 22+77.9 LT  
STA. 24+50.8 RT  
STA. 25+65.3 LT  
STA. 26+77.5 RT

MODEL: Default; FILE NAME: I:\0221131 - MarkedPlace Ph 3 - E:\reflow - ITC\CADD\Microstation\CADD Sheets\08221131-1-1-1-1-1.dgn



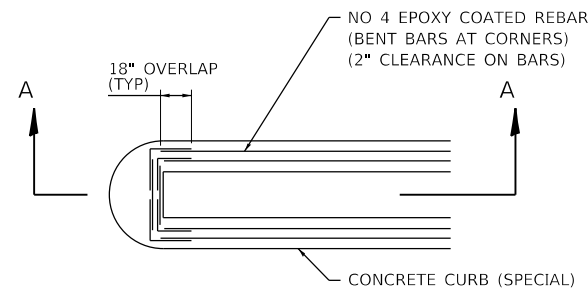
USER NAME = brian.heil	DESIGNED -	REVISED -
PLOT SCALE = 40.0000 ' / in.	DRAWN -	REVISED -
PLOT DATE = 1/26/2023	CHECKED -	REVISED -
	DATE -	REVISED -

**STATE OF ILLINOIS  
DEPARTMENT OF TRANSPORTATION**

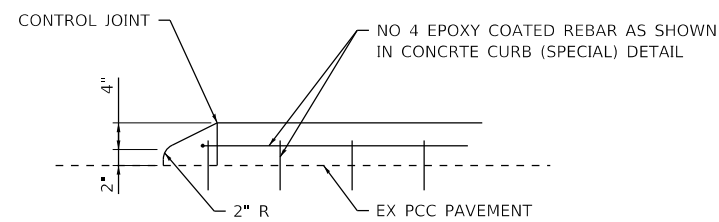
**CONSTRUCTION DETAILS**

SCALE: NTS SHEET 1 OF 2 SHEETS STA. TO STA.

F.A.U. RTE.	SECTION	COUNTY	TOTAL SHEETS	SHEET NO.
9326	17-00042-02-RS	ST CLAIR	22	16
ILLINOIS FED. AID PROJECT			CONTRACT NO. 97803	

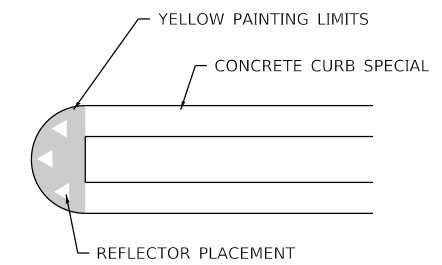


**PLAN VIEW**  
(NOT TO SCALE)



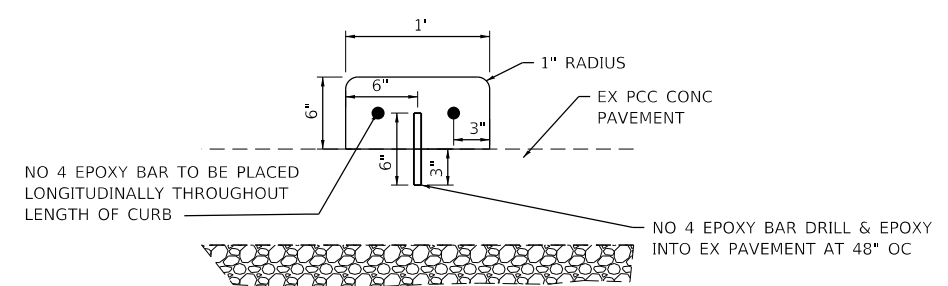
**SECTION A-A**  
(NOT TO SCALE)

**RAMPED MEDIAN NOSE DETAIL**  
(FOR CONCRETE CURB SPECIAL)

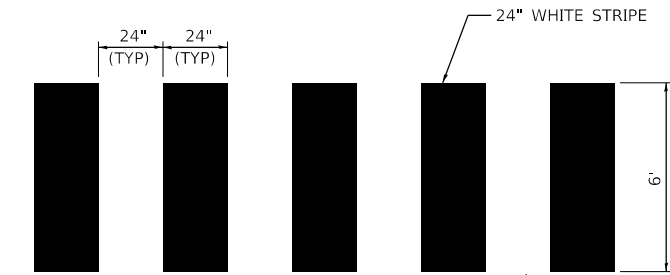


**PAINTED CURB & CURB REFLECTORS DETAIL**

(FOR CONCRETE CURB SPECIAL)  
(NOT TO SCALE)  
STA. 27+57 TO STA. 27+60



**CONCRETE CURB SPECIAL DETAIL**  
(NOT TO SCALE)



**CROSSWALK DETAIL**  
(NOT TO SCALE)

2' WIDE-STAGGER STRIPES AROUND WHEEL PATHS TO THE SATISFACTION OF THE ENGINEER

MODEL: Default  
FILE NAME: I:\0221131 - MarkedPlace Ph 3 - E:\reflow - ITC\CADD\Microstation\CADD Sheets\08221131-1-1-1-1-1-1.dgn  
ILLINOIS DESIGN FIRM LICENSE NO.: 184.001115



USER NAME = brian.heil	DESIGNED -	REVISED -
PLOT SCALE = 40.0000 ' / in.	DRAWN -	REVISED -
PLOT DATE = 1/26/2023	CHECKED -	REVISED -
	DATE -	REVISED -

**STATE OF ILLINOIS  
DEPARTMENT OF TRANSPORTATION**

**CONSTRUCTION DETAILS**

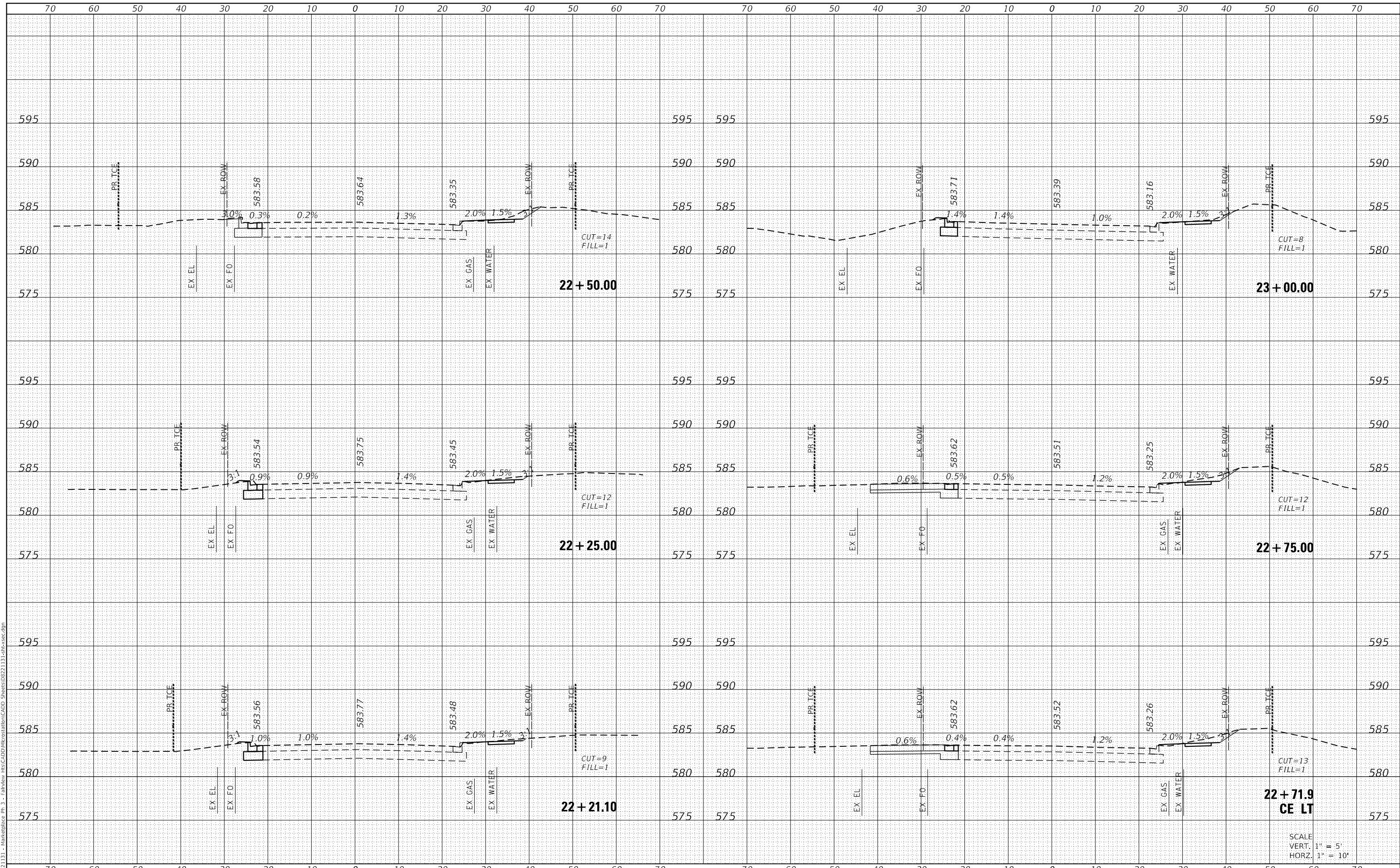
SCALE: NTS SHEET 2 OF 2 SHEETS STA. TO STA.

F.A.U. RTE.	SECTION	COUNTY	TOTAL SHEETS	SHEET NO.
9326	17-00042-02-R5	ST CLAIR	22	17
			CONTRACT NO. 97803	
			ILLINOIS FED. AID PROJECT	

DATE	
BY	
SURVEYED	
PLOTTED	
TEMPLATE	
NOTE BOOK	
AREAS CHECKED	

DATE	
BY	
SURVEYED	
PLOTTED	
TEMPLATE	
NOTE BOOK	
AREAS CHECKED	

MODEL: Defaul  
 FILE NAME: H:\221131 - Marketplace Ph 3 - Fallview\_HTS\CADD\HRS\BID\CADD\_Sheets\B221131-1-shc-vc-e.dgn



**OATES ASSOCIATES**  
 ILLINOIS DESIGN FIRM LICENSE NO.: 184,001115

USER NAME = brian.heil	DESIGNED -	REVISED -
PLOT SCALE = 20.0000' / in.	DRAWN -	REVISED -
PLOT DATE = 1/26/2023	CHECKED -	REVISED -
	DATE -	REVISED -

**STATE OF ILLINOIS  
 DEPARTMENT OF TRANSPORTATION**

**CROSS SECTION SHEETS**

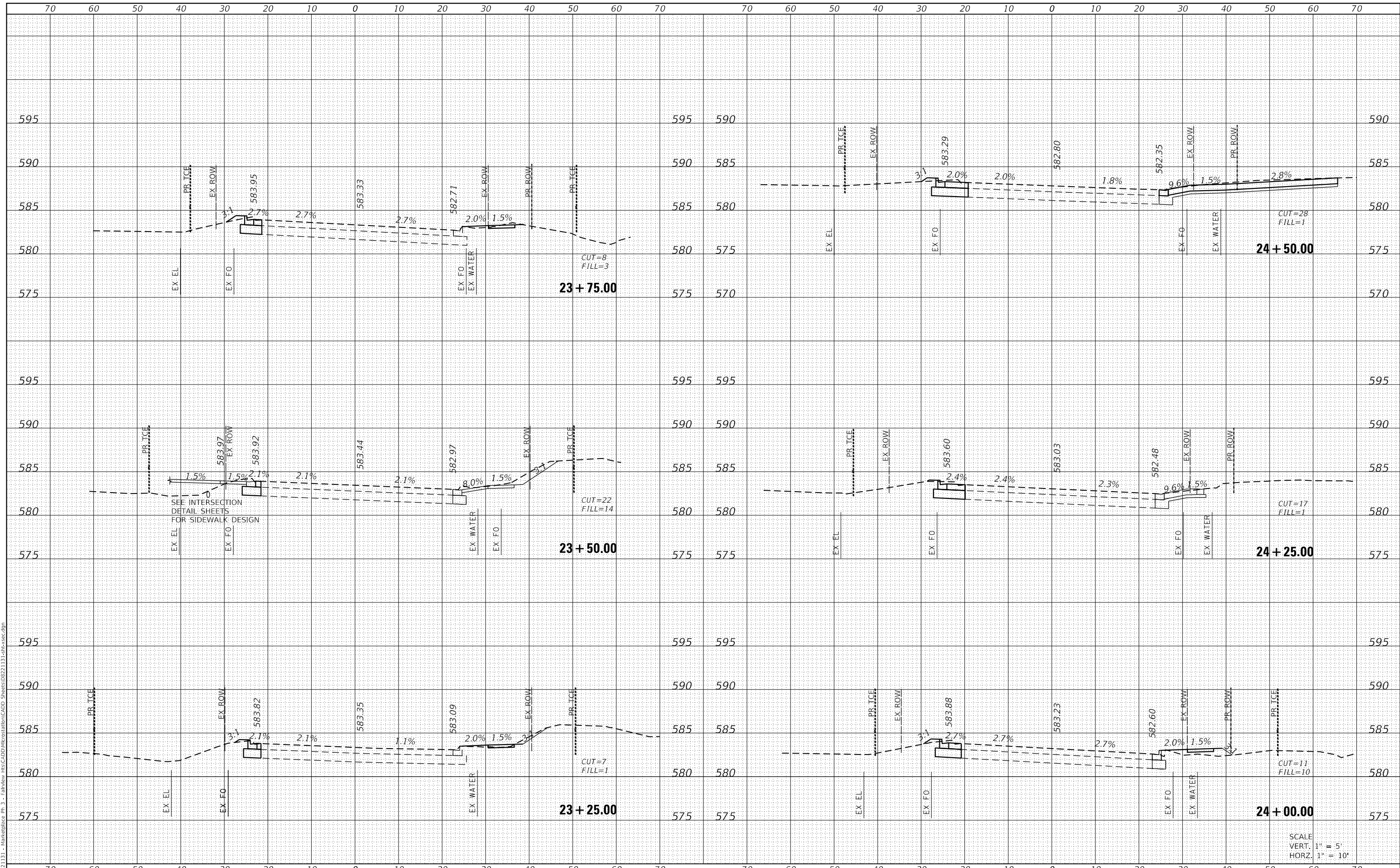
SCALE: SHEET 1 OF 5 SHEETS STA. 22+21.10 TO STA. 23+00.00

F.A.U. RTE. 9326	SECTION 17-00042-02-R5	COUNTY ST CLAIR	TOTAL SHEETS 22	SHEET NO. 18
ILLINOIS FED. AID PROJECT			CONTRACT NO. 97803	

DATE	
BY	
FINAL SURVEY	SURVEYED
NOTE BOOK	PLOTTED
NO.	TEMPLATE
	AREAS CHECKED

DATE	
BY	
ORIGINAL SURVEY	SURVEYED
NOTE BOOK	PLOTTED
NO.	TEMPLATE
	AREAS CHECKED

MODEL: Defaul  
 FILE NAME: H:\221131 - MarketPlace Ph 3 - Fallview\_HR\CADD\Interchange\CADD Sheets\0221131-shc-vc-e.dgn



**OATES ASSOCIATES**  
 ILLINOIS DESIGN FIRM LICENSE NO.: 184,001115

USER NAME =	brian.heil	DESIGNED -	REVISD -
		DRAWN -	REVISD -
PLOT SCALE =	20.0000' / in.	CHECKED -	REVISD -
PLOT DATE =	1/26/2023	DATE -	REVISD -

**STATE OF ILLINOIS  
 DEPARTMENT OF TRANSPORTATION**

**CROSS SECTION SHEETS**

SCALE:	SHEET 2	OF 5	SHEETS	STA. 23+25.00	TO STA. 24+50.00
--------	---------	------	--------	---------------	------------------

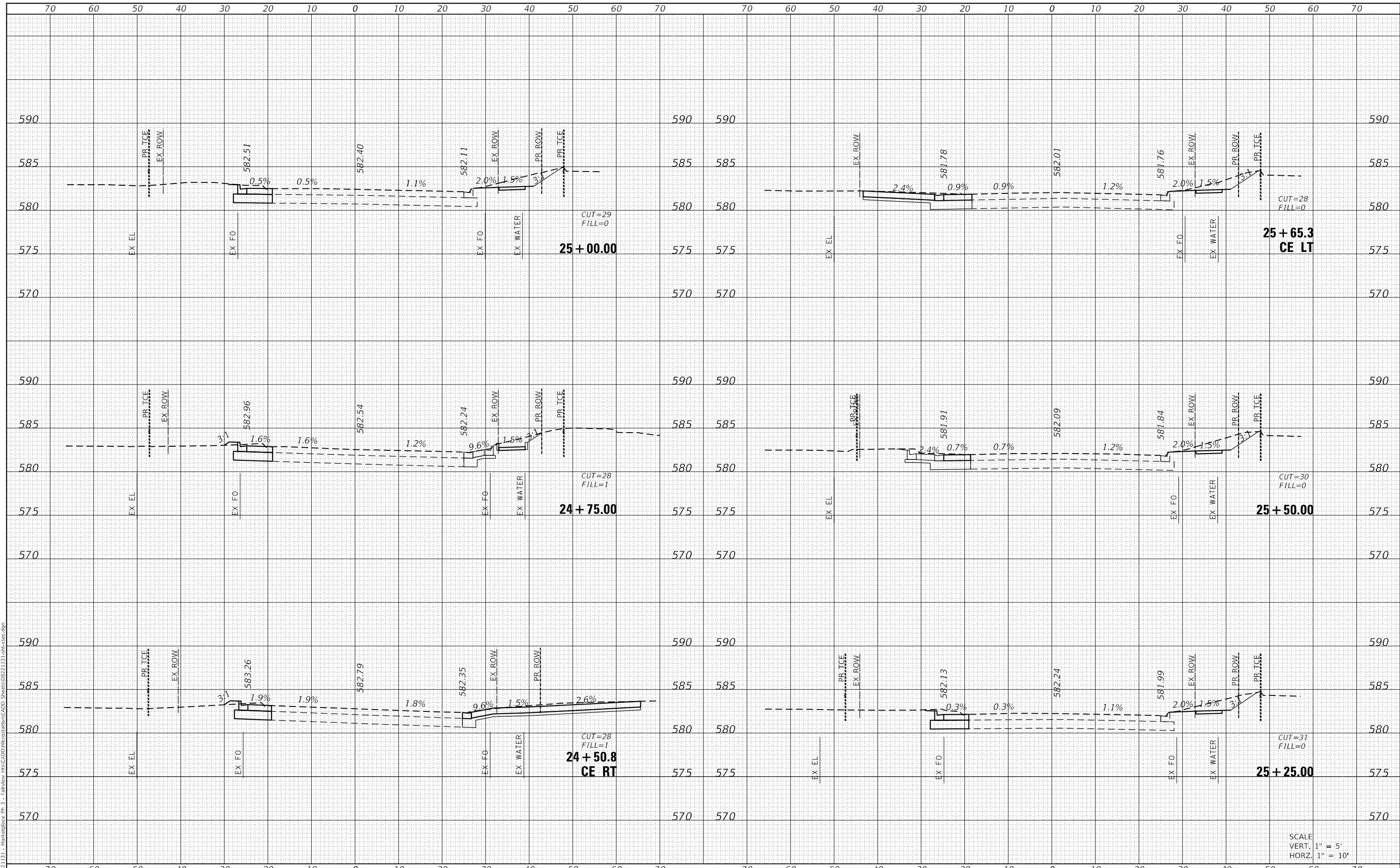
F.A.U. RTE.	SECTION	COUNTY	TOTAL SHEETS	SHEET NO.
9326	17-00042-02-R5	ST CLAIR	22	19
			CONTRACT NO. 97803	
ILLINOIS FED. AID PROJECT				

SCALE  
 VERT. 1" = 5'  
 HORZ. 1" = 10'

DATE	
BY	
FINAL SURVEY	SURVEYED
NOTE BOOK	PLOTTED
NO.	TEMPLATE
	AREAS CHECKED

DATE	
BY	
ORIGINAL SURVEY	SURVEYED
NOTE BOOK	PLOTTED
NO.	TEMPLATE
	AREAS CHECKED

MODEL: Defaul  
 FILE NAME: H:\222131 - Marketplace Ph 3 - Fallview\_HIS\CADD\MicroStation\CADD Sheets\022131-13h-vet.dgn



SCALE  
 VERT. 1" = 5'  
 HORIZ. 1" = 10'



USER NAME = brihan.heil	DESIGNED -	REVISED -
PLOT SCALE = 20.0000' / in.	DRAWN -	REVISED -
PLOT DATE = 1/26/2023	CHECKED -	REVISED -
	DATE -	REVISED -

**STATE OF ILLINOIS  
 DEPARTMENT OF TRANSPORTATION**

**CROSS SECTION SHEETS**

SCALE: SHEET 3 OF 5 SHEETS STA. 24+50.79 TO STA. 25+65.32

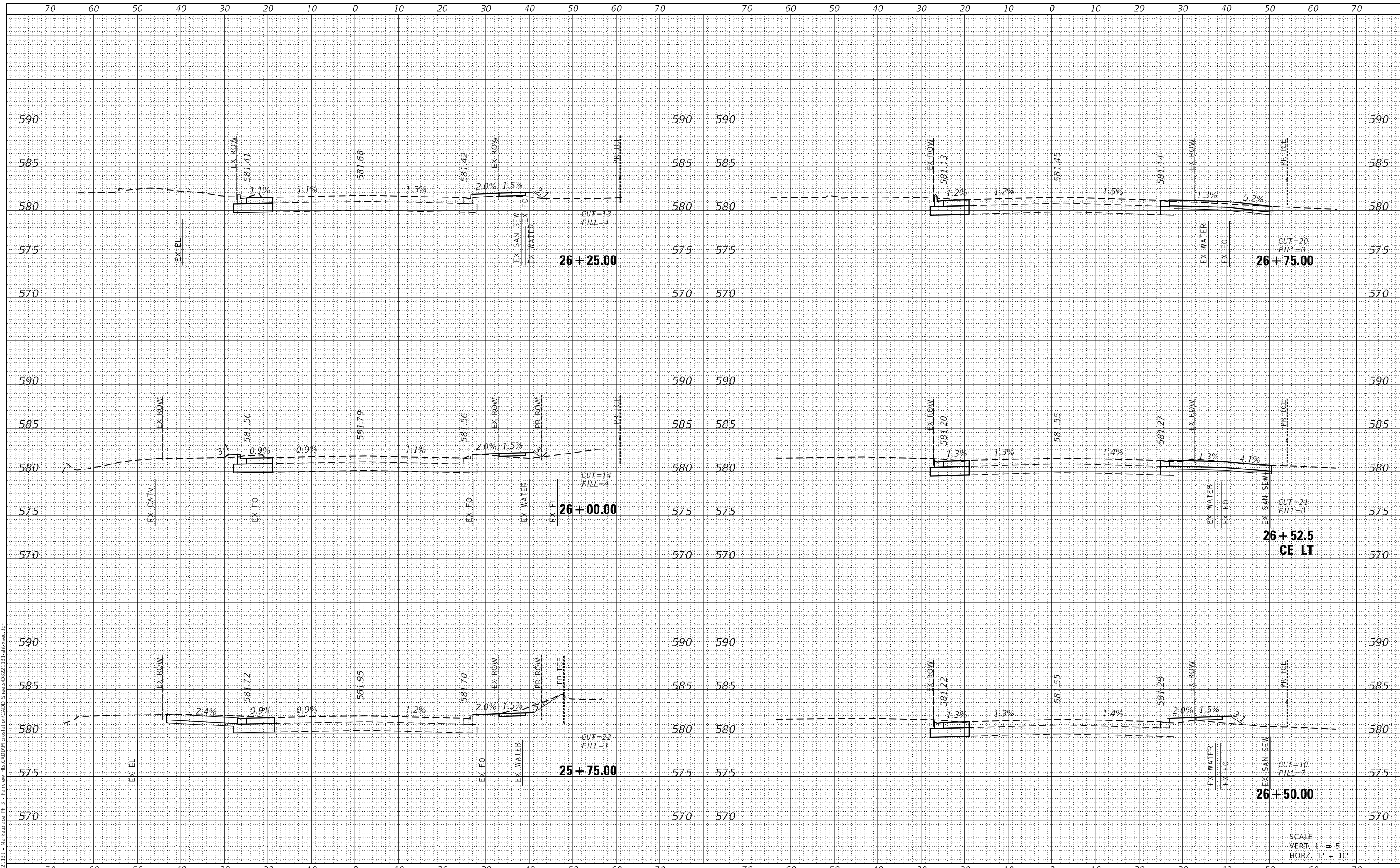
F.A.U. RTE.	SECTION	COUNTY	TOTAL SHEETS	SHEET NO.
9326	17-00042-02-RS	ST CLAIR	22	20
			CONTRACT NO. 97803	
		ILLINOIS FED. AID PROJECT		



DATE	
BY	
SURVEYED	
PLOTTED	
TEMPLATE	
NOTE BOOK	
AREAS CHECKED	
NO.	

DATE	
BY	
SURVEYED	
PLOTTED	
TEMPLATE	
NOTE BOOK	
AREAS CHECKED	
NO.	

MODEL: Defaul  
 FILE NAME: H:\221131 - MarketPlace Ph 3 - Fallview\_HR\CADD\MicroStation\CADD Sheets\0221131-shc-vc2.dgn



USER NAME =	brian.heil	DESIGNED -	REVISED -
		DRAWN -	REVISED -
PLOT SCALE =	20.0000' / in.	CHECKED -	REVISED -
PLOT DATE =	3/29/2023	DATE -	REVISED -

STATE OF ILLINOIS  
 DEPARTMENT OF TRANSPORTATION

CROSS SECTION SHEETS

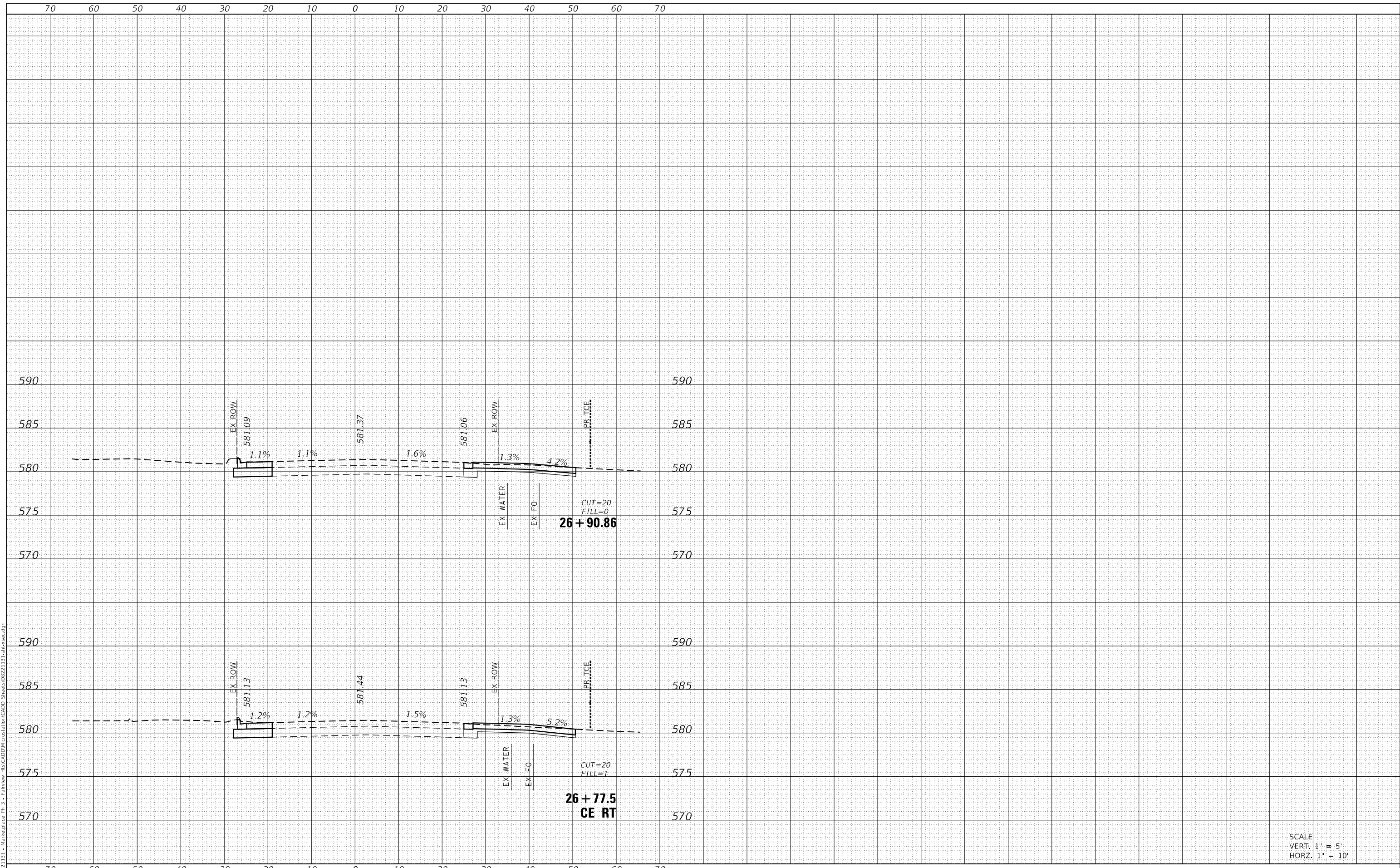
SCALE: SHEET 4 OF 5 SHEETS STA. 25+75.00 TO STA. 26+75.00

F.A.U. RTE.	SECTION	COUNTY	TOTAL SHEETS	SHEET NO.
9326	17-00042-02-R5	ST CLAIR	22	21
			CONTRACT NO. 97803	
ILLINOIS		FED. AID PROJECT		

FINAL SURVEY NO.	SURVEYED	DATE
NOTE BOOK	PLOTTED	
NO.	TEMPLATE	
	AREAS CHECKED	

ORIGINAL SURVEY NO.	SURVEYED	DATE
NOTE BOOK	PLOTTED	
NO.	TEMPLATE	
	AREAS CHECKED	

MODEL: Defaul  
FILE NAME: H:\221131 - Marketplace Ph 3 - Fallview\_HTS\CADD\MicroStation\CADD Sheets\0221131-shc-vert.dgn



SCALE  
VERT. 1" = 5'  
HORZ. 1" = 10'



USER NAME = brian.heil	DESIGNED -	REVISED -
PLOT SCALE = 20.0000 ' / in.	DRAWN -	REVISED -
PLOT DATE = 1/26/2023	CHECKED -	REVISED -
	DATE -	REVISED -

STATE OF ILLINOIS  
DEPARTMENT OF TRANSPORTATION

CROSS SECTION SHEETS			
SCALE:	SHEET 5	OF 5 SHEETS	STA. 26+77.52 TO STA. 26+90.86

F.A.U. RTE.	SECTION	COUNTY	TOTAL SHEETS	SHEET NO.
9326	17-00042-02-R5	ST CLAIR	22	22
				CONTRACT NO. 97803
				ILLINOIS FED. AID PROJECT