

STATE OF ILLINOIS
DEPARTMENT OF TRANSPORTATION

F.A. RTE.	SECTION	COUNTY	TOTAL SHEETS	SHEET NO.
VAR	2023-921-SG, GM	VAR	13	1
		ILLINOIS	CONTRACT NO. 62W43	

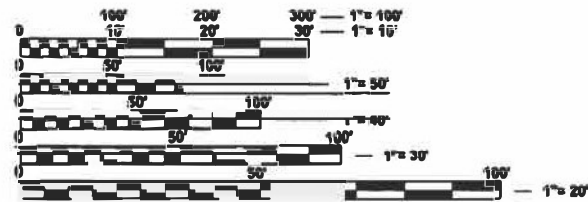
FOR INDEX OF SHEETS, SEE SHEET NO. 2

**PROPOSED
HIGHWAY PLANS**

**ROUTE: VARIOUS DISTRICT ONE
DISTRICT WIDE
SECTION 2023-921-SG, GM
VARIOUS SIGN MAINTENANCE
COUNTY: VARIOUS**

C-91-141-24

**SEE LOCATION MAPS
SHEETS 5 THRU 9**



FULL SIZE PLANS HAVE BEEN PREPARED USING STANDARD ENGINEERING SCALES. REDUCED SIZED PLANS WILL NOT CONFORM TO STANDARD SCALES. IN MAKING MEASUREMENTS ON REDUCED PLANS, THE ABOVE SCALES MAY BE USED.

J.U.L.I.E.
JOINT UTILITY LOCATION INFORMATION FOR EXCAVATION
1-800-892-0123
OR 811

PROJECT ENGINEER: RODRIGO LEDEZMA 847-705-4580
PROJECT MANAGER: J. ALAIN MIDY 847-221-3056

CONTRACT NO. 62W43

STATE OF ILLINOIS
DEPARTMENT OF TRANSPORTATION

SUBMITTED October 27, 2023
Joseph D. O'Connell
REGIONAL ENGINEER

December 8, 2023
[Signature]
ENGINEER OF DESIGN AND ENVIRONMENT

December 8, 2023
[Signature]
DIRECTOR OF HIGHWAYS PROJECT IMPLEMENTATION

**PRINTED BY THE AUTHORITY
OF THE STATE OF ILLINOIS**

INDEX OF SHEETS

SHEET NO.	DESCRIPTION
1	COVERSHEET
2	INDEX OF SHEETS, STANDARDS, AND GENERAL NOTES
3 - 4	SUMMARY OF QUANTITIES
5 - 9	LOCATION MAPS
10	ENTRANCE AND EXIT RAMP CLOSURE DETAILS (TC-8)
11	TRAFFIC CONTROL DETAILS FOR SINGLE AND MULTI-LANE WEAVES (TC-9)
12	TRAFFIC CONTROL DETAILS FOR SHOULDER CLOSURES AND PARTIAL RAMP CLOSURES (TC-17)
13	MILE POST MARKERS - GORE SIGNS MAJOR GUIDE SIGN LAYOUT - ARROWS (TC-27)

LIST OF STATE STANDARDS

STANDARD NO.	DESCRIPTION
701006 - 05	OFF-RD OPERATIONS, 2L, 2W, 15' TO 24" FROM PAVEMENT EDGE
701011 - 04	OFF-RD MOVING OPERATIONS, 2L, 2W, DAY ONLY
701106 - 02	OFF-RD OPERATIONS, MULTILANE, MORE THAN 15' AWAY
701301 - 04	LANE CLOSURE, 2L, 2W, SHORT TIME OPERATIONS
701400 - 11	APPROACH TO LANE CLOSURE, FREEWAY/EXPRESSWAY
701401 - 13	LANE CLOSURE, FREEWAY/EXPRESSWAY
701411 - 09	LANE CLOSURE, MULTILANE, AT ENTRANCE OR EXIT RAMPS, FOR SPEEDS > 45 MPH
701426 - 09	LANE CLOSURE, MULTILANE, INTERMITTENT OR MOVING OPERATIONS, FOR SPEEDS > 45 MPH
701427 - 05	LANE CLOSURE, MULTILANE, INTERMITTENT OR MOVING OPERATIONS, FOR SPEEDS < 40 MPH
701428 - 01	TRAFFIC CONTROL SETUP AND REMOVAL FREEWAY/EXPRESSWAY
701446 - 11	TWO LANE CLOSURE, FREEWAY/EXPRESSWAY
701901 - 09	TRAFFIC CONTROL DEVICES
720001 - 01	SIGN PANEL MOUNTING DETAILS
720006 - 04	SIGN PANEL ERECTION DETAILS
720011 - 01	METAL POSTS FOR SIGNS, MARKERS AND DELINEATORS
720016 - 04	MAST ARM MOUNTED STREET NAME SIGNS
720021 - 03	SIGN PANELS EXTRUDED ALUMINUM TYPE
728001 - 01	TELESCOPING STEEL SIGN SUPPORT
729001 - 01	APPLICATIONS OF TYPES A AND B METAL POSTS (FOR SIGNS AND MARKERS)
731001 - 01	BASE FOR TELESCOPING STEEL SIGN SUPPORT

GENERAL NOTES

- BEFORE STARTING ANY EXCAVATION, THE CONTRACTOR SHALL CALL "JULIE" AT 800-892-0123 OR 811 FOR FIELD LOCATIONS OF BURIED ELECTRIC, TELEPHONE AND GAS FACILITIES. (48 HOUR NOTIFICATION IS REQUIRED)
- BEFORE STARTING ANY EXCAVATION, THE CONTRACTOR SHALL CALL "C.U.A.N."(CHICAGO UTILITY ALERT NETWORK) AT (312) 744-7000 FOR FIELD LOCATIONS OF BURIED ELECTRIC, TELEPHONE AND GAS UTILITIES. (48 HOUR NOTIFICATION IS REQUIRED).
- ALL WORK SHALL BE DONE AS INDICATED IN THE WORK ORDER FORM.
- NO MATERIAL SHALL BE LEFT ON OR NEAR THE ROADWAY DURING NON-WORKING HOURS.
- ANY HARDWARE REFERENCED IN THE PLANS OR SPECIAL PROVISIONS SHALL BE SUPPLIED AND INSTALLED BY THE CONTRACTOR. THE COST OF THE HARDWARE IS INCLUDED IN THE COST OF THE ITEMS INVOLVED.
- REMOVAL OF DAMAGED MATERIALS SHALL INCLUDE DISMANTLING, LOADING, HAULING AND DISPOSAL. THE WORK SITE SHALL BE LEFT IN A SAFE AND ORDERLY CONDITION.
- THE CONTRACTOR SHALL PICK UP THE SIGNS FROM ANY ONE OF THE FOUR (4) SIGN SHOPS THAT ISSUED THEM THE WORK ORDER.
- THE CONTRACTOR SHALL REQUEST AND GAIN APPROVAL FOR THE ILLINOIS DEPARTMENT OF TRANSPORTATION'S EXPRESSWAY TRAFFIC OPERATIONS ENGINEER AT WWW.IDOTLCS.COM TWENTY-FOUR HOURS IN ADVANCE OF ALL DAILY LANE, RAMP AND SHOULDER CLOSURES. ALLOWABLE HOURS ON THE EXPRESSWAY SHALL BE DETERMINED BY THE EXPRESSWAY TRAFFIC OPERATIONS ENGINEER.
- CONTRACTOR SHALL NOT IMPLEMENT TRAFFIC CONTROL STANDARD 701426-09 ON THE INTERSTATE SYSTEM. THE SIGN SHOP LOCATIONS ARE AS FOLLOWS:

(ESS)
 IDOT ELGIN SIGN SHOP
 595 S. STATE STREET, DRIVE F, DOOR 22
 ELGIN, IL 60123
 (847) 741-5302

(SSSS)
 IDOT SOUTHSIDE SIGN SHOP
 15940 PULASKI RD.
 MARKHAM, IL 60426
 (708) 597-9800

(NSSS)
 IDOT NORTHSIDE SIGN SHOP
 7151 W. FOREST PRESERVE DRIVE
 CHICAGO, IL 60634
 (773) 685-8386

(NLSS)
 IDOT NEW LENOX SIGN SHOP
 1400 W. MAPLE STREET
 NEW LENOX, IL 60452
 (815) 485-6475

MODEL: Index-Gennotes (Sheet)
 FILE NAME: c:\pwworking\illinois\electrical\mmd\024957\Sign_Maintenance-sht-gennote.dgn

USER NAME = rodrigo.ledezma	DESIGNED -	REVISED -
	DRAWN -	REVISED -
PLOT SCALE = 0.16666633 / in.	CHECKED -	REVISED -
PLOT DATE = 10/23/2023	DATE -	REVISED -

STATE OF ILLINOIS
 DEPARTMENT OF TRANSPORTATION

INDEX OF SHEETS, STATE STANDARDS & GENERAL NOTES

SCALE: Full Size 1 = 1 SHEET OF 1 SHEETS STA. TO STA.

F.A. RTE.	SECTION	COUNTY	TOTAL SHEETS	SHEET NO.
VAR	2023-921-SG, GM	VAR	13	2
			CONTRACT NO. 62W43	
ILLINOIS FED. AID PROJECT				

SUMMARY OF QUANTITIES			0044 TOTAL QUANTITIES 100% STATE	CONSTRUCTION TYPE CODE				
CODE NO	ITEM	UNIT						
63500105	DELINEATORS	EACH	100	100				
70200100	NIGHTTIME WORK ZONE LIGHTING	L SUM	1	1				
72300100	INSTALL EXISTING SIGN PANEL	SQ FT	1250	1250				
72400100	REMOVE SIGN PANEL ASSEMBLY - TYPE A	EACH	300	300				
72400200	REMOVE SIGN PANEL ASSEMBLY - TYPE B	EACH	200	200				
72400330	REMOVE SIGN PANEL - TYPE 3	SQ FT	1200	1200				
72400500	RELOCATE SIGN PANEL ASSEMBLY - TYPE A	EACH	100	100				
72400600	RELOCATE SIGN PANEL ASSEMBLY - TYPE B	EACH	50	50				
72400730	RELOCATE SIGN PANEL - TYPE 3	SQ FT	250	250				
72800100	TELESCOPING STEEL SIGN SUPPORT	FOOT	2000	2000				
73000100	WOOD SIGN SUPPORT	FOOT	700	700				
X0325130	TUBULAR TRAFFIC SIGN POST	EACH	50	50				
X0326174	REPAIR EXISTING SIGN ASSEMBLY	EACH	50	50				
X0326181	INSTALL STREET SIGN	SQ FT	4	4				
X0877000	STRAIGHTEN EXISTING SIGN POST - TYPE A ASSEMBLY	EACH	75	75				

SUMMARY OF QUANTITIES			0044 TOTAL QUANTITIES 100% STATE	CONSTRUCTION TYPE CODE				
CODE NO	ITEM	UNIT						
X0877100	STRAIGHTEN EXISTING SIGN POST - TYPE B ASSEMBLY	EACH	75	75				
X0877200	STRAIGHTEN EXISTING SIGN POST - TYPE 3 ASSEMBLY	EACH	25	25				
X2010100	TREE LIMB REMOVAL (4 TO 10 INCHES DIAMETER)	EACH	25	25				
X6350108	FLEXIBLE DELINEATORS	EACH	80	80				
X7200150	INSTALL SIGN PANEL - TYPE 1 (EXPRESSWAY)	SQ FT	500	500				
X7200250	INSTALL SIGN PANEL - TYPE 2 (EXPRESSWAY)	SQ FT	800	800				
X7200350	INSTALL SIGN PANEL - TYPE 3 (EXPRESSWAY)	SQ FT	200	200				
X7230100	INSTALL SIGN PANEL - TYPE 1	SQ FT	3000	3000				
X7230200	INSTALL SIGN PANEL - TYPE 2	SQ FT	1000	1000				
X7230203	INSTALL SIGN PANEL - TYPE 3	SQ FT	200	200				
X7240195	REMOVE EXISTING SIGN PANEL	EACH	80	80				
X7270025	REMOVE EXISTING SIGN SUPPORT	EACH	100	100				
X7270030	RELOCATE EXISTING SIGN SUPPORT	EACH	25	25				

MODEL: Sheet-1 (Sheet)
FILE NAME: c:\p\work\wvd\ledezma\m0924957\Sign_Maintenance\cash-SQG.dgn

USER NAME = rodrigo.ledezma	DESIGNED -	REVISED -
	DRAWN -	REVISED -
PLOT SCALE = 0.16666633 / in.	CHECKED -	REVISED -
PLOT DATE = 10/18/2023	DATE -	REVISED -

**STATE OF ILLINOIS
DEPARTMENT OF TRANSPORTATION**

SUMMARY OF QUANTITIES

SCALE: 1"=50' SHEET OF 2 SHEETS STA. TO STA.

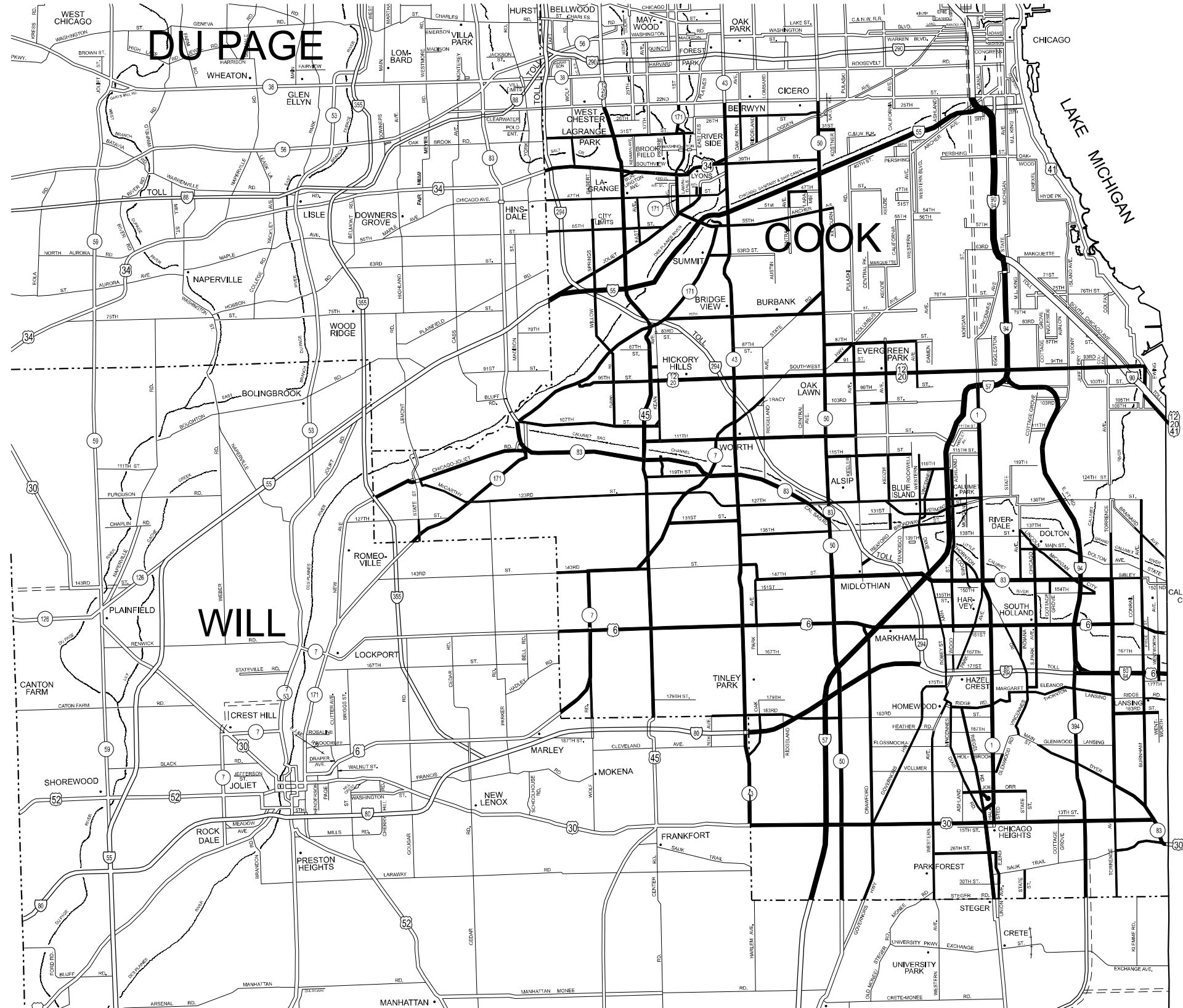
F.A. RTE.	SECTION	COUNTY	TOTAL SHEETS	SHEET NO.
VAR	2023-021-SG, GM	VAR	13	3
			CONTRACT NO. 62W43	
ILLINOIS FED. AID PROJECT				

SUMMARY OF QUANTITIES			0044	CONSTRUCTION TYPE CODE				
CODE NO	ITEM	UNIT	TOTAL QUANTITIES 100% STATE					
X7290002	INSTALL ROUND STEEL SIGN SUPPORT	FOOT	500	500				
Z0019307	HOLES DRILLED	EACH	20	20				

SUMMARY OF QUANTITIES			0044	CONSTRUCTION TYPE CODE				
CODE NO	ITEM	UNIT	TOTAL QUANTITIES 100% STATE					

MODEL: Sheet-2 (Sheet)
FILE NAME: c:\p\work\work\ledezma\m\092457\Sgnp_Maintenance\cch-SQC.dgn

USER NAME = rodrigo.ledezma	DESIGNED -	REVISED -	STATE OF ILLINOIS DEPARTMENT OF TRANSPORTATION	SUMMARY OF QUANTITIES		F.A. RTE.	SECTION	COUNTY	TOTAL SHEETS	SHEET NO.
PLOT SCALE = 0.16666833 1/ in.	DRAWN -	REVISED -		SCALE: 1"=50'	SHEET OF 2 SHEETS	STA. TO STA.	VAR	2023-021-SG, GM	VAR	13 4
PLOT DATE = 10/23/2023	CHECKED -	REVISED -						CONTRACT NO. 62W43		
	DATE -	REVISED -						ILLINOIS FED. AID PROJECT		



— SOUTH SIDE SIGN SHOP JURISDICTION

DISTRICT NO. 1

- STATE HIGHWAYS & EXPRESSWAYS
WITHIN STATE JURISDICTION
(EXCEPT TOLLWAYS)
- FUTURE HIGHWAYS
- VARIOUS AGENCIES HIGHWAYS

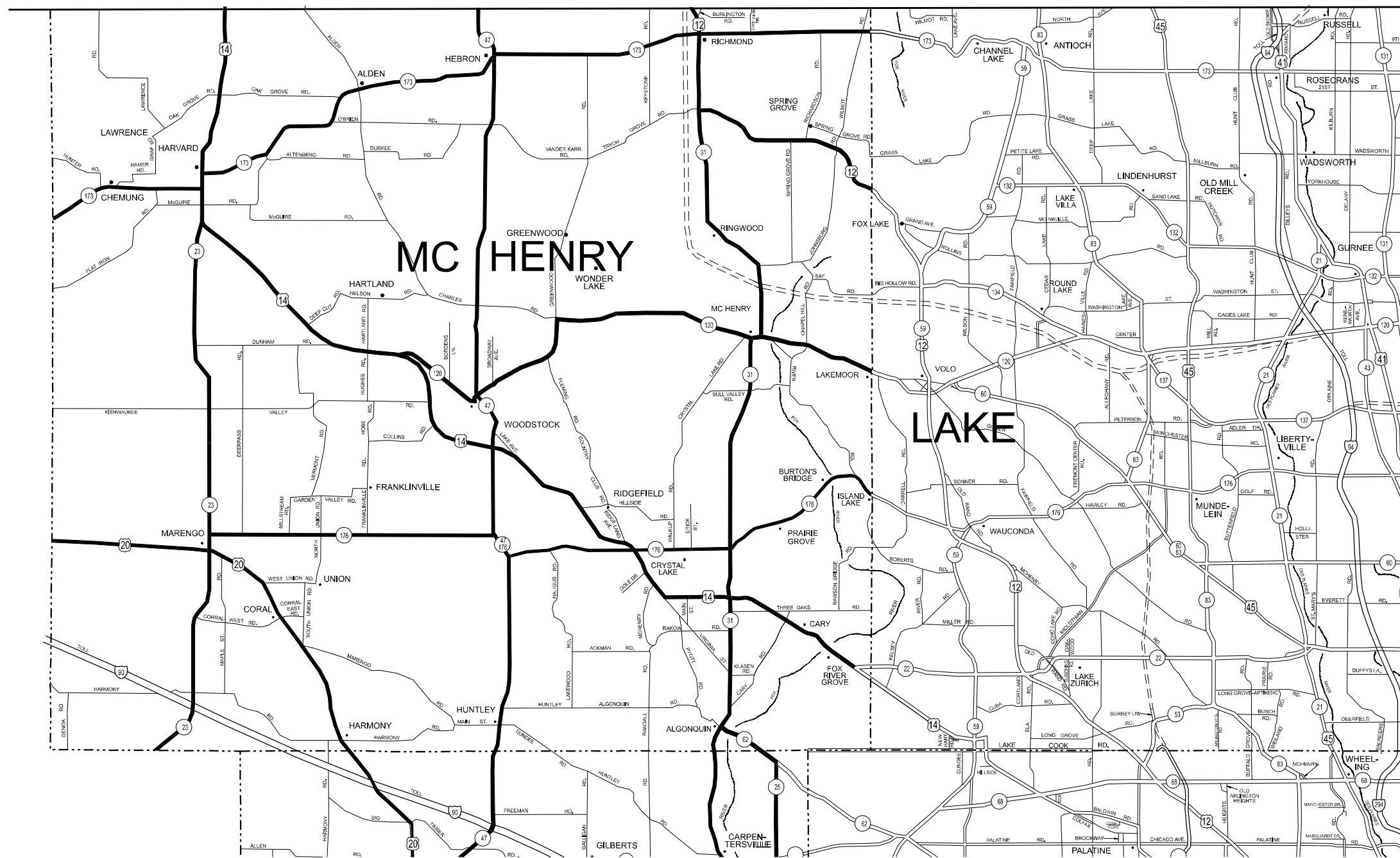
MODEL: South Side Sign Jurisdiction (Sheet)
FILE NAME: c:\pwworking\roads\design\m2102924957\Sigs_Maintenance-shh-details.dgn

USER NAME = rodrigo.ledezma	DESIGNED -	REVISED -
	DRAWN -	REVISED -
PLOT SCALE = 0.16666833' / in.	CHECKED -	REVISED -
PLOT DATE = 10/23/2023	DATE -	REVISED -

**STATE OF ILLINOIS
DEPARTMENT OF TRANSPORTATION**

SOUTHSIDE SIGN SHOP JURISDICTION SIGN INSTALLATION AND REPAIR		F.A. RTE.	SECTION	COUNTY	TOTAL SHEETS	SHEET NO.
		VAR	2023-021-SG, GM	VAR	13	5
SCALE: 1"=50'		SHEET OF 5 SHEETS		STA. TO STA.		CONTRACT NO. 62W43
						ILLINOIS FED. AID PROJECT

WISCONSIN



ELGIN SIGN SHOP JURISDICTION

- DISTRICT NO. 1
- STATE HIGHWAYS & EXPRESSWAYS WITHIN STATE JURISDICTION (EXCEPT TOLLWAYS)
 - FUTURE HIGHWAYS
 - VARIOUS AGENCIES HIGHWAYS

SEE NEXT SHEET FOR ELGIN SIGN SHOP CONTINUATION

MODEL: Elgin-1 [Sheet]
 FILE NAME: c:\p\work\wisconsin\elgin\mmd024957\Sign_Maintenance-shp-details.dgn

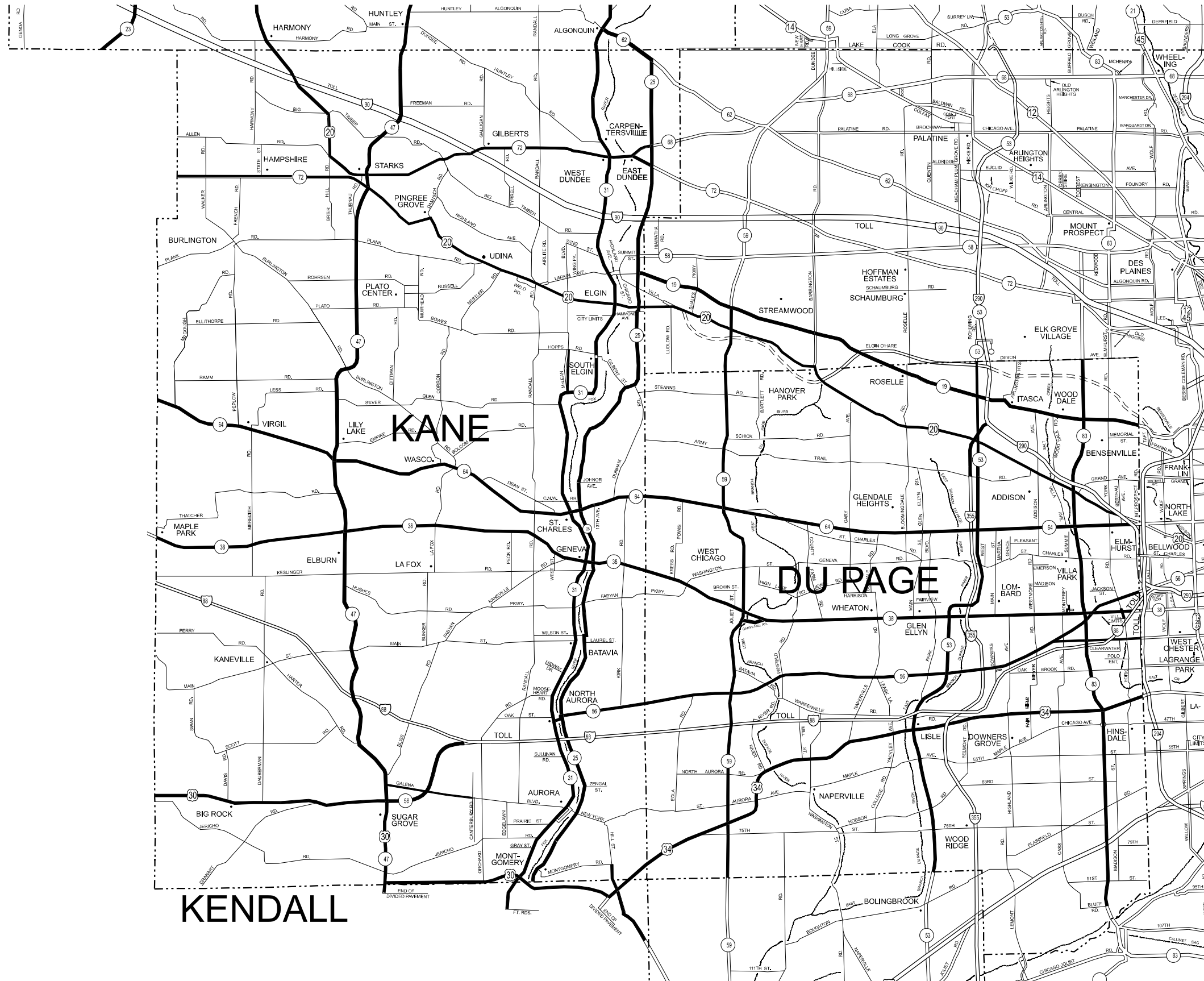
USER NAME = rodrigo.ledezma	DESIGNED -	REVISED -
	DRAWN -	REVISED -
PLOT SCALE = 0.16666633' / in.	CHECKED -	REVISED -
PLOT DATE = 10/18/2023	DATE -	REVISED -

**STATE OF ILLINOIS
DEPARTMENT OF TRANSPORTATION**

ELGIN SIGNS SHOP JURISDICTION 1 OF 2 SIGN INSTALLATION AND REPAIR	
SCALE: 1"=50'	SHEET OF 5 SHEETS STA. TO STA.

F.A. RTE.	SECTION	COUNTY	TOTAL SHEETS	SHEET NO.
VAR	2023-021-SG, GM	VAR	13	6
CONTRACT NO. 62W43				
ILLINOIS FED. AID PROJECT				

SEE PREVIOUS SHEET FOR ELGIN SIGN SHOP CONTINUATION



ELGIN SIGN SHOP JURISDICTION

- DISTRICT NO. 1
- STATE HIGHWAYS & EXPRESSWAYS WITHIN STATE JURISDICTION (EXCEPT TOLLWAYS)
 - FUTURE HIGHWAYS
 - VARIOUS AGENCIES HIGHWAYS

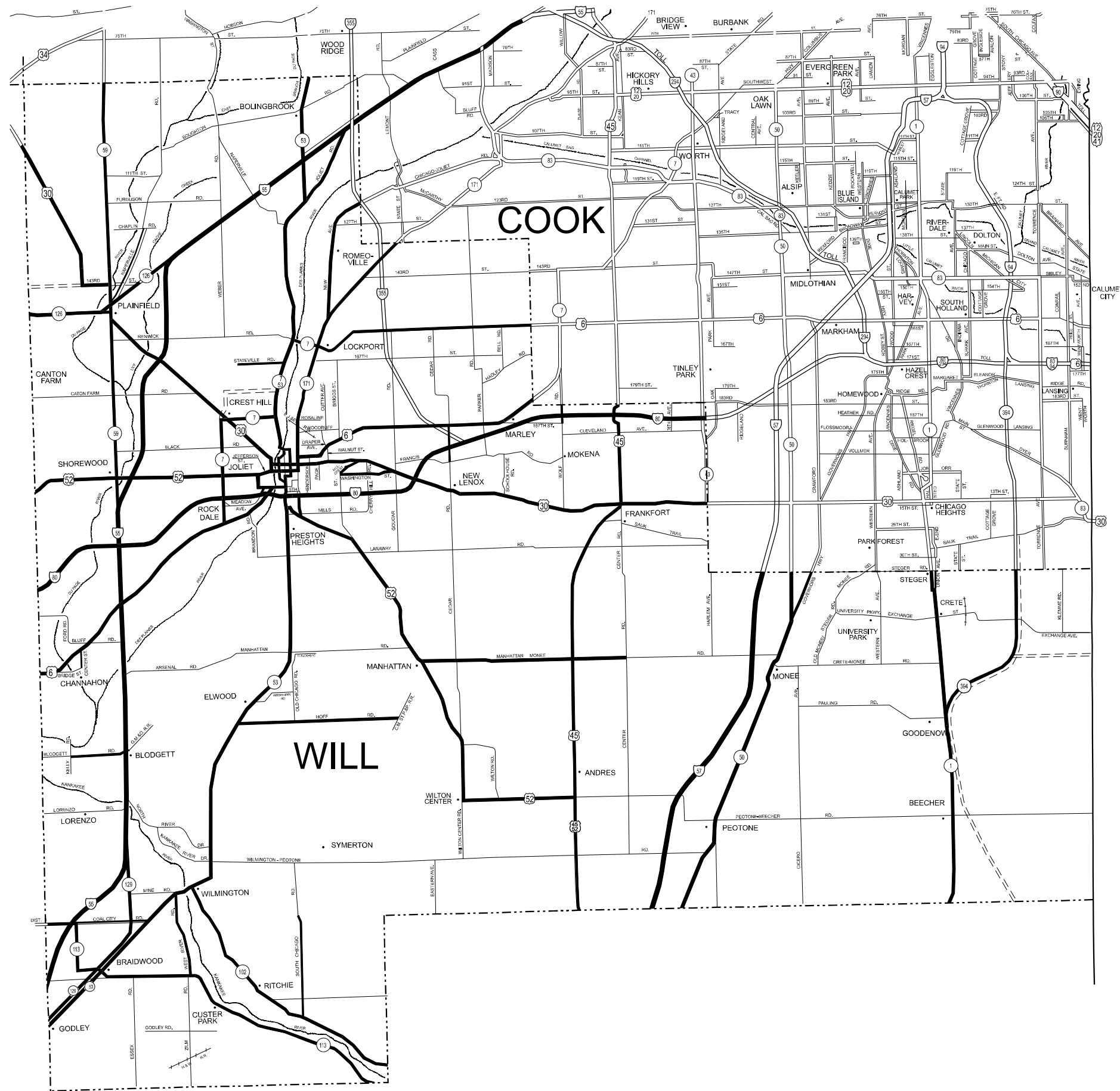
MODEL: Elgin-2 (Sheet)
 FILE NAME: c:\p\work\elgin\elgin\mxd\024957\Sign_Maintenance-shp-details.dgn

USER NAME = rodrigo.ledezma	DESIGNED -	REVISED -
	DRAWN -	REVISED -
PLOT SCALE = 0.16666833 / in.	CHECKED -	REVISED -
PLOT DATE = 10/23/2023	DATE -	REVISED -




**STATE OF ILLINOIS
 DEPARTMENT OF TRANSPORTATION**

ELGIN SIGN SHOP JURISDICTION 2 OF 2 SIGN INSTALLATION AND REPAIR			
SCALE: 1"=50'	SHEET	OF 5 SHEETS	STA. TO STA.

F.A. RTE.	SECTION	COUNTY	TOTAL SHEETS	SHEET NO.
VAR	2023-021-SG, GM	VAR	13	7
CONTRACT NO. 62W43				
ILLINOIS FED. AID PROJECT				



NEW LENOX SIGN SHOP JURISDICTION

- DISTRICT NO. 1
-  STATE HIGHWAYS & EXPRESSWAYS WITHIN STATE JURISDICTION (EXCEPT TOLLWAYS)
 -  FUTURE HIGHWAYS
 -  VARIOUS AGENCIES HIGHWAYS

MODEL - New Lenox (Sheet)
FILE NAME - c:\pwworking\ledezma\mdd024957\Sign_Maintenance-sht-details.dgn

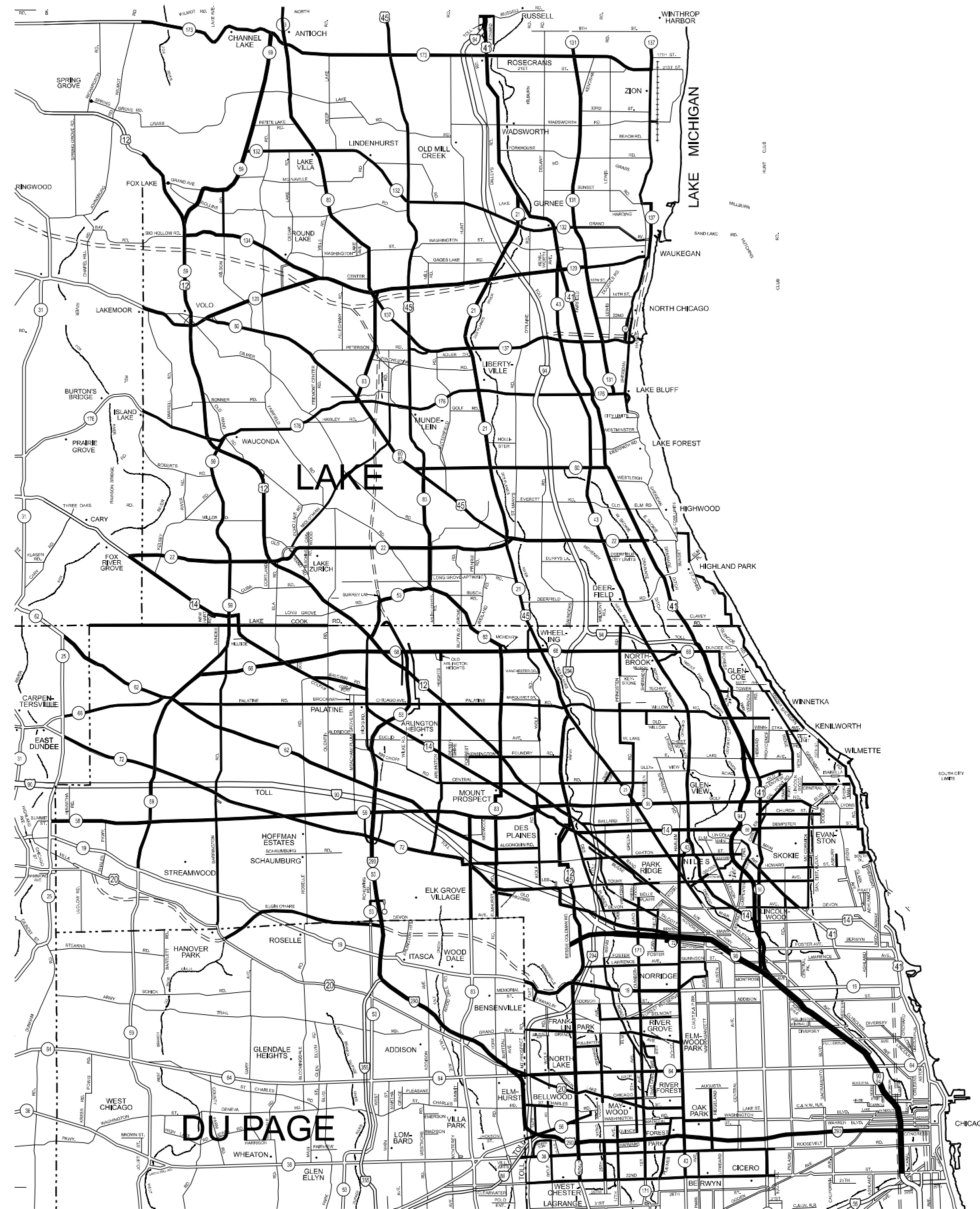
USER NAME = rodrigo.ledezma	DESIGNED -	REVISED -
	DRAWN -	REVISED -
PLOT SCALE = 0.16666833 / in.	CHECKED -	REVISED -
PLOT DATE = 10/23/2023	DATE -	REVISED -

**STATE OF ILLINOIS
DEPARTMENT OF TRANSPORTATION**

**NEW LENOX SIGN SHOP JURISDICTION 1 OF 1
SIGN INSTALLATION AND REPAIR**

SCALE: 1"=50' SHEET OF 5 SHEETS STA. TO STA.

F.A. RTE.	SECTION	COUNTY	TOTAL SHEETS	SHEET NO.
VAR	2023-021-SG, GM	VAR	13	8
			CONTRACT NO. 62W43	
ILLINOIS FED. AID PROJECT				



█ NORTHSIDE SIGN SHOP JURISDICTION

- DISTRICT NO. 1**
- STATE HIGHWAYS & EXPRESSWAYS WITHIN STATE JURISDICTION (EXCEPT TOLLWAYS)
 - - - FUTURE HIGHWAYS
 - VARIOUS AGENCIES HIGHWAYS

MODEL: Northside (Sheet)
 FILE NAME: c:\p\work\wv\ltd\ltd\m\m\0924957\Sign_Maintenance-shp-details.dgn

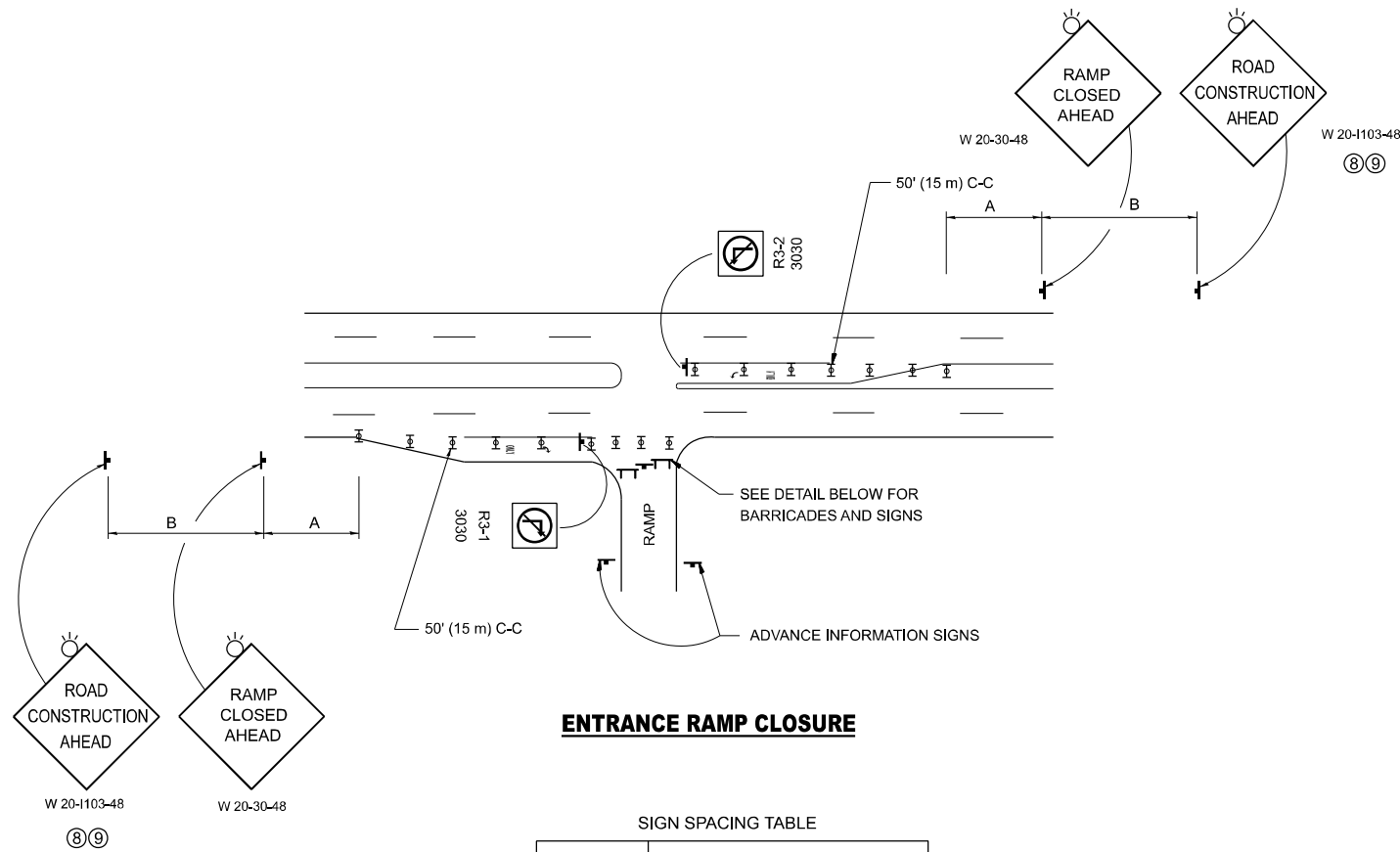
USER NAME = rodrigo.ledezma	DESIGNED -	REVISED -
	DRAWN -	REVISED -
PLOT SCALE = 0.16666833 / in.	CHECKED -	REVISED -
PLOT DATE = 10/23/2023	DATE -	REVISED -

**STATE OF ILLINOIS
DEPARTMENT OF TRANSPORTATION**

**NORTHSIDE SIGN SHOP JURISDICTION
SIGN INSTALLATION AND REPAIR**

SCALE: 1"=50' SHEET OF 5 SHEETS STA. TO STA.

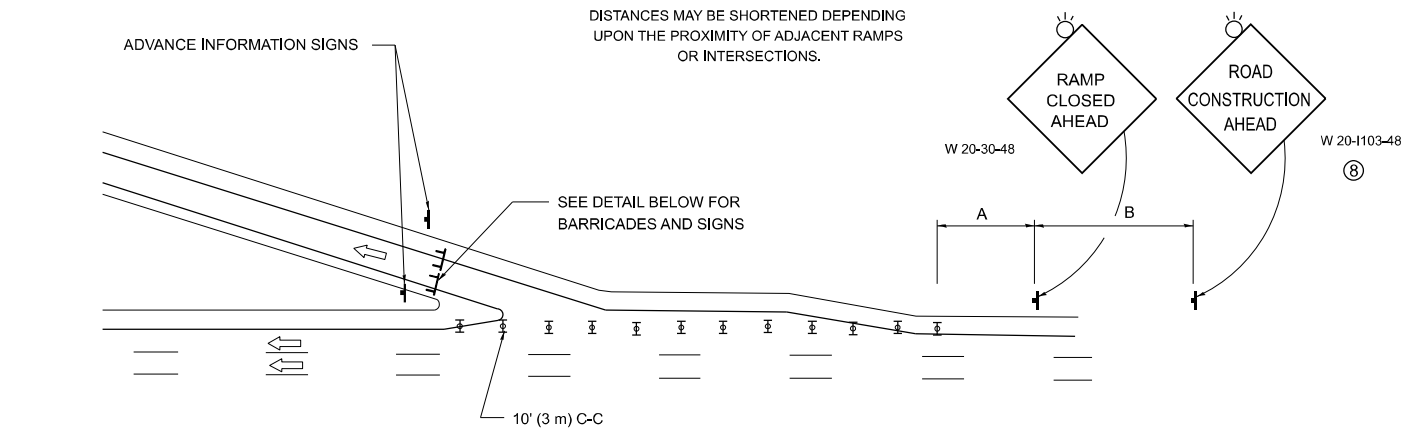
F.A. RTE.	SECTION	COUNTY	TOTAL SHEETS	SHEET NO.
VAR	2023-021-SG, GM	VAR	13	9
CONTRACT NO. 62W43				
ILLINOIS FED. AID PROJECT				



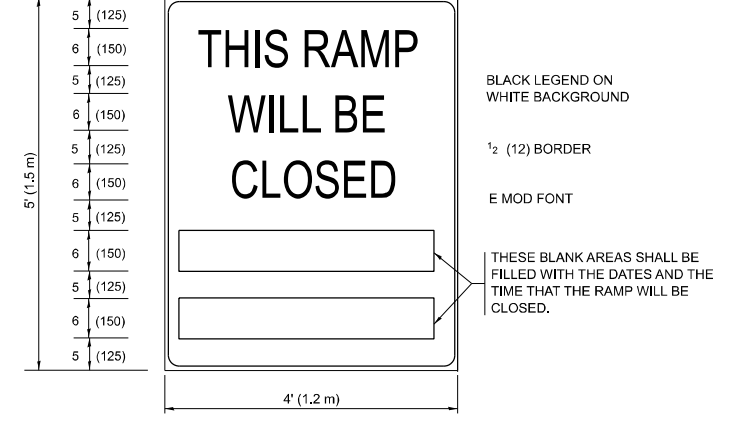
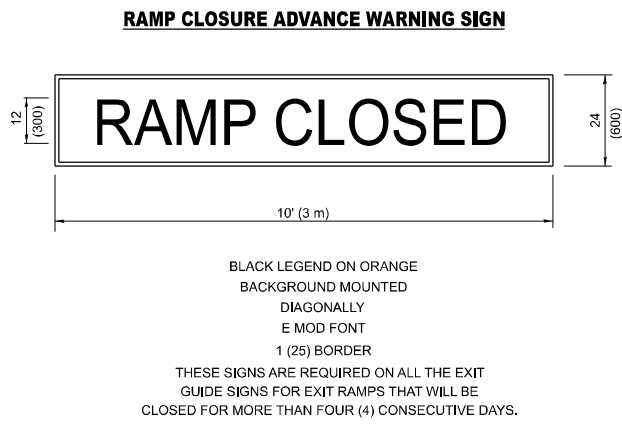
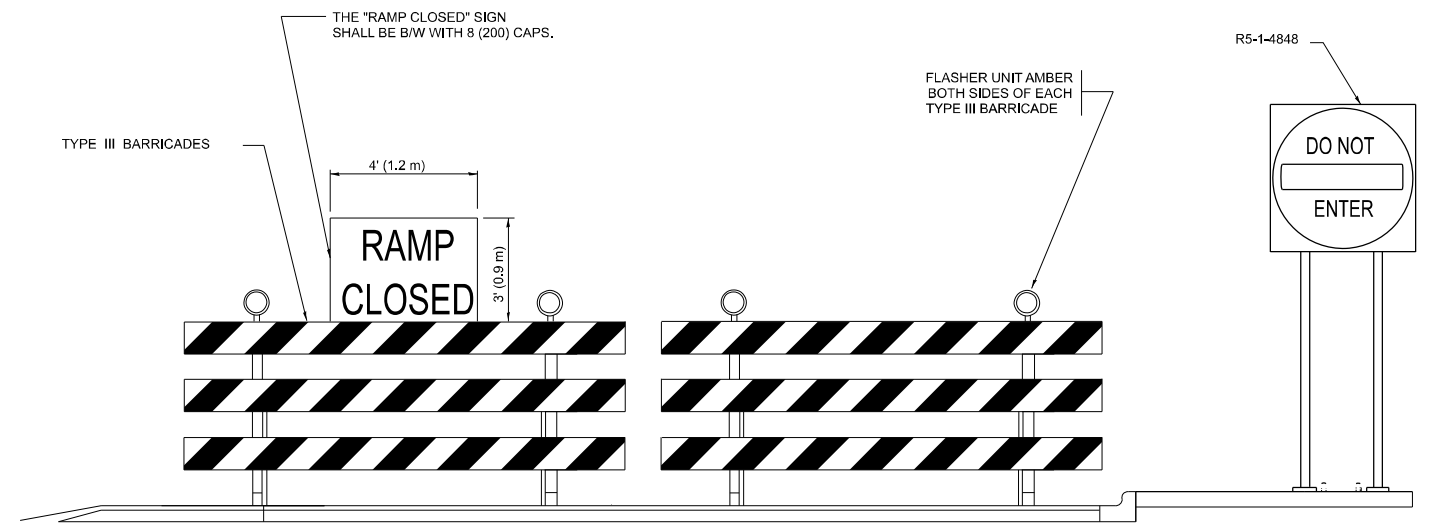
SIGN SPACING TABLE

FACILITY	DISTANCE BETWEEN SIGNS	
	A	B
EXPRESSWAY >24 HOURS	1000' (300 m)	1500' (450 m)
EXPRESSWAY ≤24 HOURS	500' (150 m)	500' (150 m)
ARTERIAL 55 MPH	500' (150 m)	500' (150 m)
ARTERIAL 50-45 MPH	350' (100 m)	350' (100 m)
ARTERIAL <45 MPH	200' (60 m)	200' (60 m)

DISTANCES MAY BE SHORTENED DEPENDING UPON THE PROXIMITY OF ADJACENT RAMPS OR INTERSECTIONS.



- SYMBOLS**
- TYPE II BARRICADE OR DRUM
 - TYPE III BARRICADE WITH 2 FLASHING LIGHTS



THESE SIGNS ARE REQUIRED ON BOTH SIDES OF THE RAMP, MINIMUM OF 1 WEEK IN ADVANCE OF THE CLOSURE.
 THESE SIGNS SHALL BE FABRICATED AND PAID FOR ACCORDING TO THE TEMPORARY INFORMATION SIGNING SPECIAL PROVISION

GENERAL NOTES:

- CONES MAY BE SUBSTITUTED FOR DRUMS OR TYPE II BARRICADES DURING DAY OPERATIONS. CONES SHALL BE A MINIMUM OF 28 (700) HIGH.
- VERTICAL BARRICADES SHALL NOT BE USED FOR RAMP CLOSURES.
- A FLAGGER SHALL BE POSITIONED AT EACH CLOSED RAMP THAT IS OPEN TO CONSTRUCTION VEHICLES, PRECEDED BY A W20-7 FLAGGER WARNING SIGN.
- ALL ROUTE MARKERS AND TRAILBLAZER ASSEMBLIES WHICH DIRECT MOTORISTS TO A CLOSED ENTRANCE RAMP SHALL BE COVERED WHEN THE RAMP IS CLOSED FOR MORE THAN FOUR (4) DAYS.
- THE SIGNING AND BARRICADING WHICH IS REQUIRED BY THIS DETAIL SHALL BE INCLUDED IN THE COST OF TRAFFIC CONTROL AND PROTECTION (EXPRESSWAYS).
- AUTHORIZATION FROM THE DISTRICT'S BUREAU OF TRAFFIC IS REQUIRED FOR ALL RAMP CLOSURES.
- THE RAMP CLOSURE ADVANCE INFORMATION SIGNS SHALL BE ERECTED IF THE CLOSURE TIME EXCEEDS TWENTY-FOUR (24) HOURS. ADDITIONAL ADVANCE WARNING SIGNS ON EXIT GUIDE SIGNING WILL BE REQUIRED FOR EXIT RAMP CLOSURES THAT EXCEED FOUR (4) DAYS IN LENGTH
- ROAD CONSTRUCTION AHEAD SIGNS MAY BE OMITTED WHEN THIS DETAIL IS USED IN CONJUNCTION WITH OTHER TRAFFIC CONTROL THAT ALREADY INCLUDES A ROAD CONSTRUCTION AHEAD SIGN.
- ARTERIAL ROAD CONSTRUCTION AHEAD SIGNS SHALL BE INSTALLED ON THE LEFT SIDE OF TRAFFIC IF THE MEDIAN IS MORE THAN 10 FT WIDE.

ALL DIMENSIONS ARE IN INCHES (MILLIMETERS) UNLESS OTHERWISE SHOWN.

MODEL: TC-8 (Sheet)
 FILE NAME: c:\p\work\wv\coll\ledezma\m\024957\Sign_Maintenance-shr-DistSigs.dgn

USER NAME = rodrigo.ledezma	DESIGNED - D.W.S.	REVISED - S.P.B._01-07
PLOT SCALE = 0.16666633' / in.	DRAWN -	REVISED - S.P.B._12-09
PLOT DATE = 10/23/2023	CHECKED -	REVISED - M.D._06-13
	DATE - 02-83	REVISED - M.D._01-18

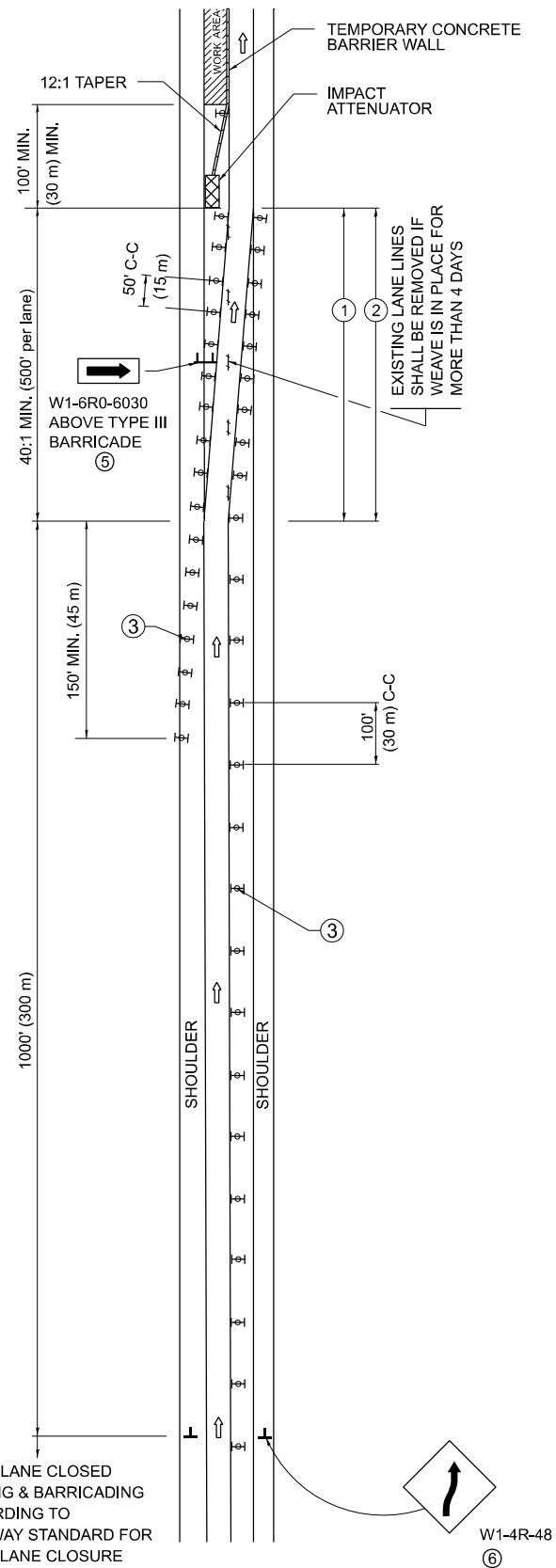
**STATE OF ILLINOIS
 DEPARTMENT OF TRANSPORTATION**

**ENTRANCE AND EXIT RAMP
 CLOSURE DETAILS**

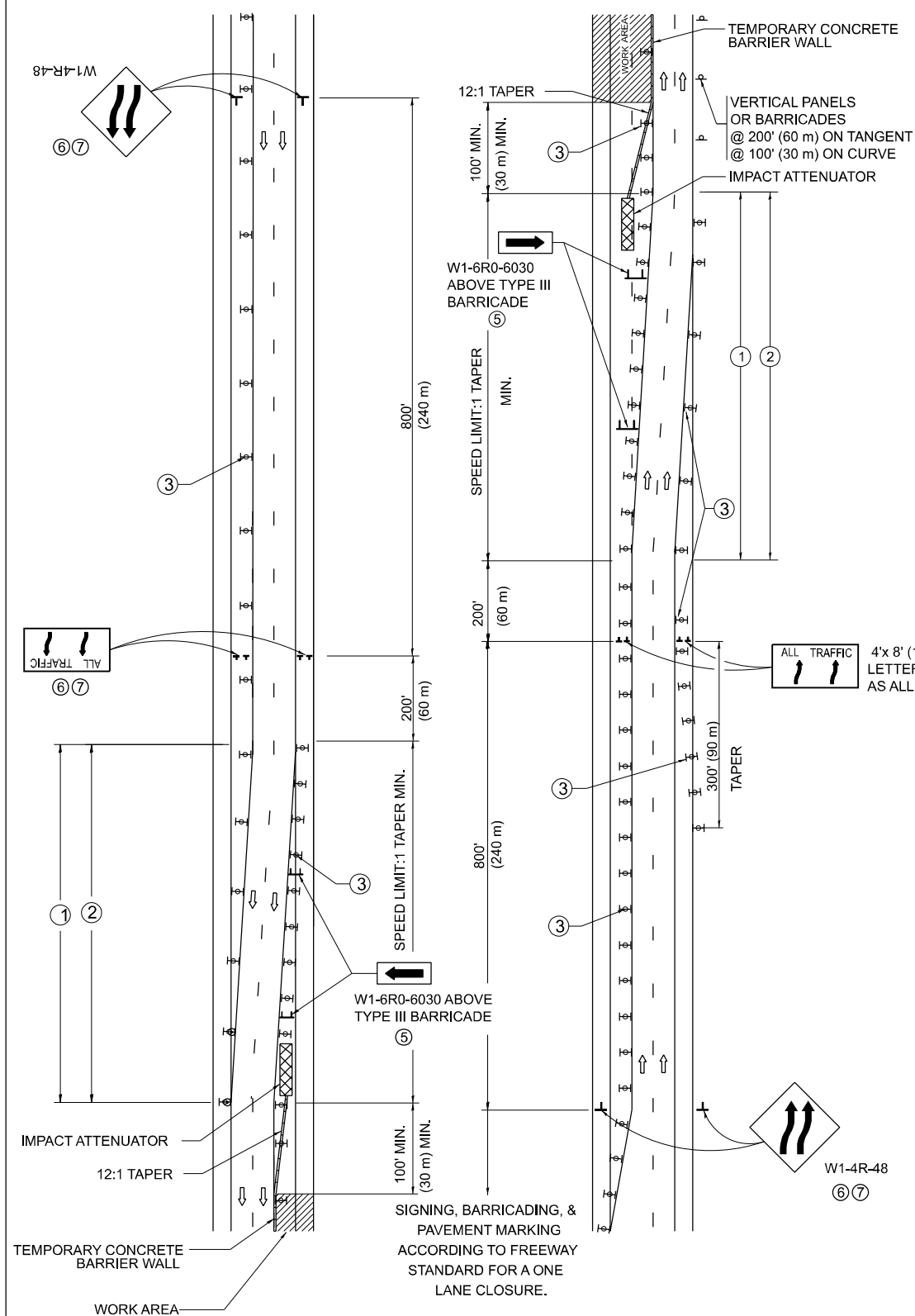
SCALE: NONE SHEET 1 OF 1 SHEETS STA. TO STA.

F.A. RTE.	SECTION	COUNTY	TOTAL SHEETS	SHEET NO.
VAR	2023-021-SG, GM	VAR	13	10
TC-08		CONTRACT NO. 62W43		
ILLINOIS		FED. AID PROJECT		

SINGLE LANE WEAVE



MULTI-LANE WEAVE



GENERAL NOTES:

- ① EXISTING CONFLICTING PAVEMENT MARKING LINES SHALL BE REMOVED. PAVEMENT MARKING REMOVAL SHALL NOT BE REQUIRED FOR SINGLE LANE WEAVES UNDER 4 DAYS IN DURATION.
- ② CONTINUOUS REFLECTIVE TEMPORARY PAVEMENT MARKING TAPE SHALL BE PLACED THROUGHOUT THE TAPER AND FOR 300' (90 m) ALONG SIDE THE WORK AREA WHERE THE CLOSURE TIME IS GREATER THAN FOURTEEN DAYS, THE LEFT EDGE LINE SHALL BE YELLOW AND THE RIGHT EDGE LINE SHALL BE WHITE, FOR MULTI-LANE WEAVES LANE LINES SHALL BE 5 INCH, 10'-30' (3 m-9 m) SKIP DASH, WHITE.
- ③ PLASTIC DRUMS WITH STEADY BURN LIGHTS AT 50' (15 m) C-C SPACING IN TAPERS AND 100' (30 m) C-C SPACING IN TANGENTS.
- ④ ALL SIGNS SHALL BE POST MOUNTED IF THE CLOSURE TIME EXCEEDS FOUR DAYS.
- ⑤ TYPE III BARRICADES MAY BE OMITTED FOR SINGLE-LANE WEAVES UNDER 24-HOURS IN DURATION. W1-6 SIGNS WILL STILL BE REQUIRED. IF THE WIDTH OF OFFSET IS LESS THAN 6' THEN THE TYPE III BARRICADE WITH ATTACHED ARROW SIGN PANEL CAN BE ELIMINATED IN THE TAPER AREAS.
- ⑥ WHEN THE LENGTH OF THE SHIFTED SEGMENT (DISTANCE BETWEEN WEAVE POINTS) IS LESS THAN 1500', DOUBLE REVERSE CURVE SIGNS (W24-1) SHOULD BE USED INSTEAD OF THE REVERSE CURVE (W1-4) SIGNS. ARROWS ON THE 4'X8' "ALL TRAFFIC" SIGNS SHALL BE THE SAME SHAPE.
- ⑦ THE NUMBER OF ARROWS ON THESE SIGNS SHALL MATCH THE NUMBER OF LANES OPEN TO TRAFFIC.

SYMBOLS

- DIRECTION OF TRAFFIC
- WORK AREA
- SIGN ON PORTABLE OR PERMANENT SUPPORT
- TYPE II BARRICADE OR DRUM WITH MONO-DIRECTIONAL STEADY BURNING LIGHT
- TEMPORARY CONCRETE BARRIER WALL
- IMPACT ATTENUATOR
- W1-4R-48
- W24-1-48

ALL DIMENSIONS ARE IN INCHES (MILLIMETERS) UNLESS OTHERWISE SHOWN

MODEL: TC-9 (Sheet) FILE NAME: c:\p\work\pwr\ledezma\m0924957\Sign_Maintenance-shr-Dist\Sigs.dgn

USER NAME = rodrigo.ledezma	DESIGNED - D.W.S.	REVISED - J.A.F. 02-06
PLOT SCALE = 0.16666633' / in.	CHECKED -	REVISED - S.P.B. 01-07
PLOT DATE = 10/18/2023	DATE - 02-87	REVISED - S.P.B. 12-09
		REVISED - M.D. 06-13

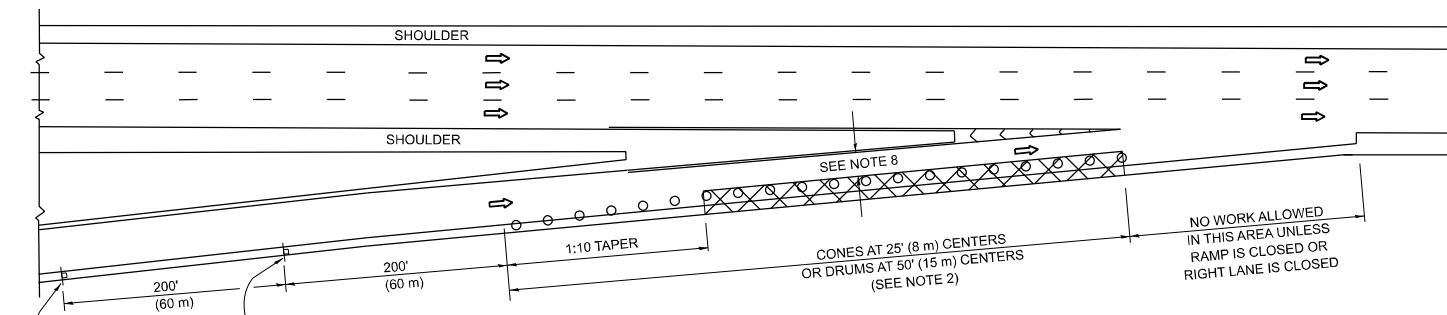
STATE OF ILLINOIS
DEPARTMENT OF TRANSPORTATION

TRAFFIC CONTROL DETAILS FOR
FREEWAY SINGLE & MULTI-LANE WEAVE

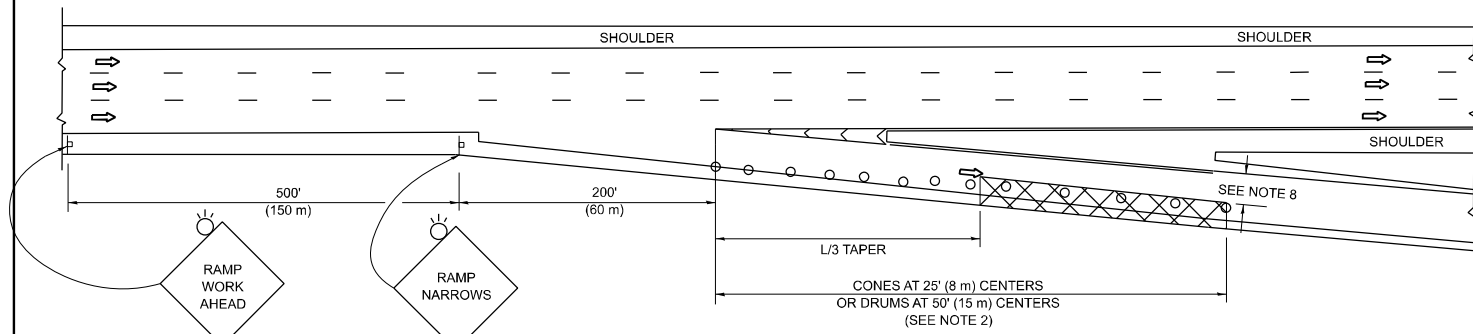
SCALE: NONE SHEET 1 OF 1 SHEETS STA. TO STA.

F.A. RTE.	SECTION	COUNTY	TOTAL SHEETS	SHEET NO.
VAR	2023-021-SG, GM	VAR	13	11
TC-09		CONTRACT NO. 62W43		
ILLINOIS FED. AID PROJECT				

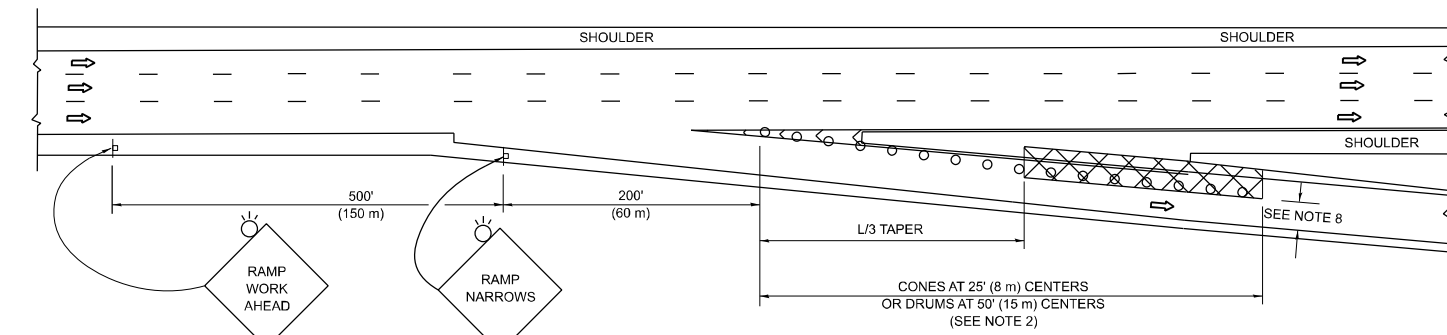
PARTIAL RAMP CLOSURE DETAILS



TYPICAL ENTRANCE RAMP



TYPICAL EXIT RAMP



TYPICAL EXIT RAMP

SYMBOLS

- ACTIVE WORK AREA
- SIGN ON PORTABLE OR PERMANENT SUPPORT
- FLAGGER WITH CONTROL SIGN
- TYPE II BARRICADE OR DRUM
- CONE, DRUM OR BARRICADE
- IMPACT ATTENUATOR OF TYPE AND TEST LEVEL SPECIFIED

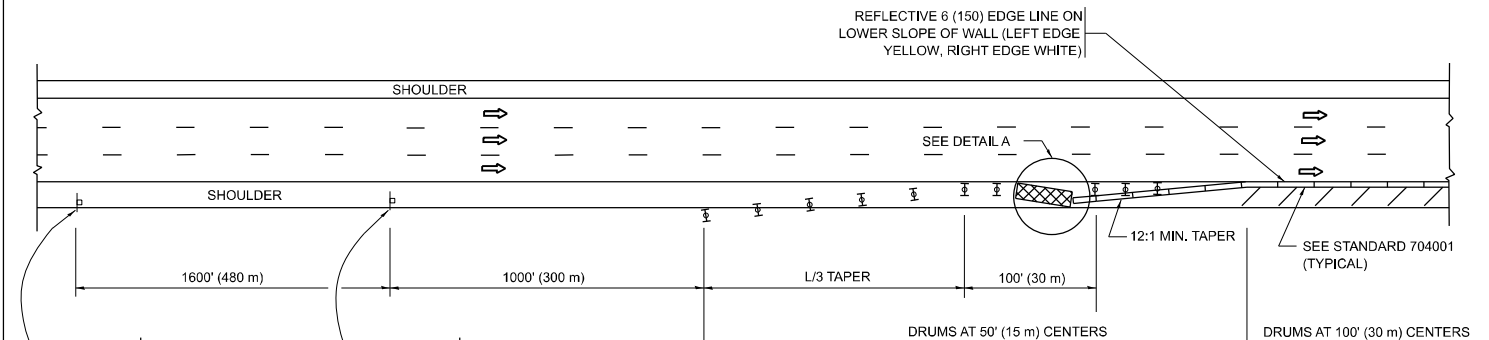
GENERAL NOTES:

- THE "L" DISTANCE EQUALS:

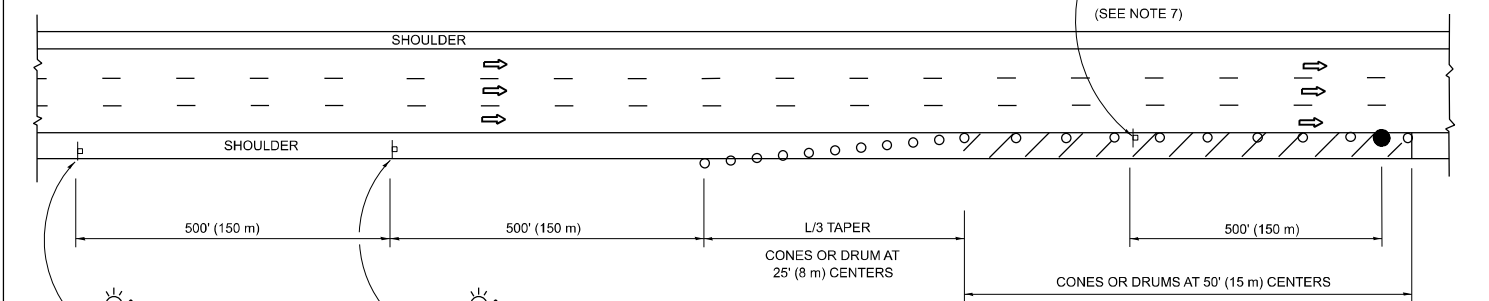
SPEED LIMIT	FORMULAS
45 mph (80 km/h)	METRIC ENGLISH
OR GREATER:	$L=0.65(W)(S)$ $L=(W)(S)$

W = WIDTH OF OFFSET IN FEET (METERS)
 S = NORMAL POSTED SPEED MPH (KM/H)
- TYPE II BARRICADES OR DRUMS ARE REQUIRED FOR ALL NIGHTTIME CLOSURES. TYPE II BARRICADES OR DRUMS WITH MONODIRECTIONAL STEADY BURN LIGHTS ARE REQUIRED FOR DELINEATING OBSTACLES, EXCAVATIONS, OR HAZARDS EXCEEDING 100 FT (30m) IN LENGTH AT NIGHT.
- ALL SIGNS SHALL BE POST MOUNTED IF THE CLOSURE TIME EXCEEDS FOUR DAYS.
- FLASHING LIGHTS SHALL BE USED DURING THE HOURS OF DARKNESS AND SHALL BE INSTALLED ABOVE THE FIRST TWO SETS OF SIGNS.

SHOULDER CLOSURE DETAILS

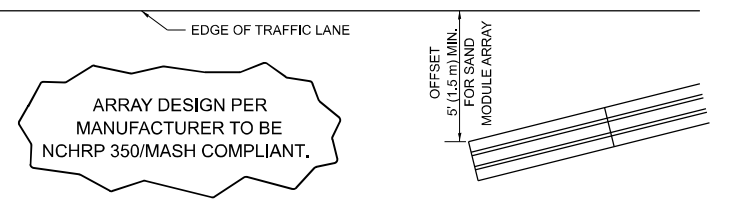


PERMANENT SHOULDER CLOSURE



TEMPORARY SHOULDER CLOSURE

- THIS DETAIL IS USED WHERE:
- VEHICLES, EQUIPMENT, WORKERS OR THEIR ACTIVITIES ENCR OACH IN AN AREA CLOSER THAN 15' (4.5 m) TO THE EDGE OF PAVEMENT FOR A PERIOD IN EXCESS OF 15 MINUTES.



**DETAIL "A"
IMPACT ATTENUATOR, TEMPORARY
(SEE NOTE 5)**

- THE IMPACT ATTENUATOR, TEMPORARY IS NOT REQUIRED WHEN THE TEMPORARY CONCRETE BARRIER WALL IS PROTECTED BY OR IS TIED INTO THE EXISTING GUARDRAIL. IF OFFSET IS LESS THAN 5 FEET USE NARROW USE TYPE DEVICE TO MEET NCHRP350/MASH.
- AUTHORIZATION FROM THE DISTRICT'S BUREAU OF TRAFFIC IS REQUIRED FOR ALL FREEWAY CLOSURES.
- THE FLAGGER AND FLAGGER SIGN ARE REQUIRED AT THE ABOVE WORK SITES WHEN:
 - FOUR OR MORE WORK VEHICLES ENTER THE TRAFFIC LANES IN A ONE HOUR PERIOD.
 - THE WORK ACTIVITY REQUIRES FREQUENT ENCR OACHMENT INTO THE LANE OPEN TO TRAFFIC.
 THE FLAGGER SHALL BE STATIONED APPROXIMATELY 100' (30 m) TO 200' (60 m) IN ADVANCE OF THE WORKERS.

- 12' MIN. WIDTH TANGENT SECTION
16' MIN. WIDTH CURVE SECTION.
- TEMPORARY SHOULDER AND NON-SYSTEM INTERCHANGE PARTIAL RAMP CLOSURES ARE ALLOWED WEEKDAYS BETWEEN 9:00 A.M. AND 3:00 P.M. AND BETWEEN 7:00 P.M. AND 5:00 A.M. OR AS APPROVED BY THE EXPRESSWAY TRAFFIC OPERATIONS ENGINEER. PERMANENT SHOULDER AND PARTIAL RAMP CLOSURES WILL ONLY BE PERMITTED IF CALLED FOR IN THE PLANS OR AS APPROVED BY THE EXPRESSWAY OPERATIONS ENGINEER.

ALL DIMENSIONS ARE IN INCHES (MILLIMETERS) UNLESS OTHERWISE SHOWN.

MODEL: TC-17 (Sheet)
 FILE NAME: c:\p\work\wv\coll\dezmarm\024957\Sign_Maintenance-shr-DistSigs.dgn

USER NAME = rodrigo.ledezma	DESIGNED -	REVISED - S.P.B. 12-09
	DRAWN - D.W.S.	REVISED - M.D. 06-13
PLOT SCALE = 0.16666833 / in.	CHECKED -	REVISED - M.D. 01-18
PLOT DATE = 10/23/2023	DATE - 11-96	REVISED - M.D. 10-20

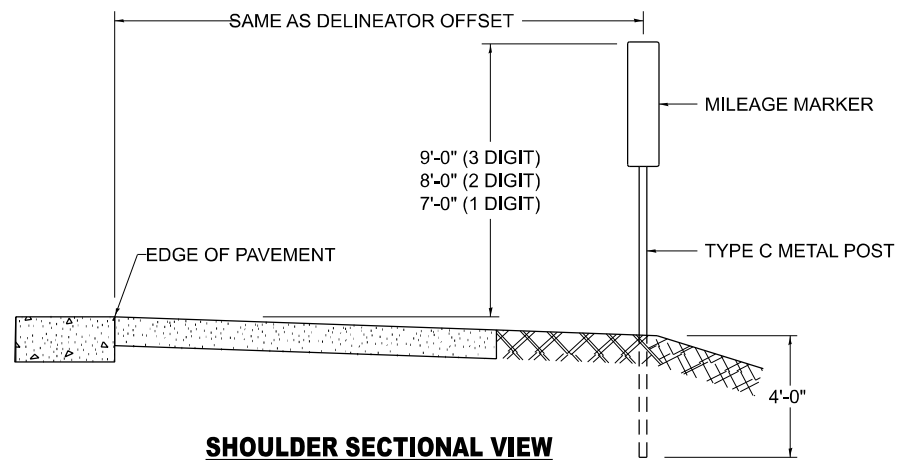
**STATE OF ILLINOIS
DEPARTMENT OF TRANSPORTATION**

**TRAFFIC CONTROL DETAILS FOR FREEWAY
SHOULDER CLOSURES AND PARTIAL RAMP CLOSURES**

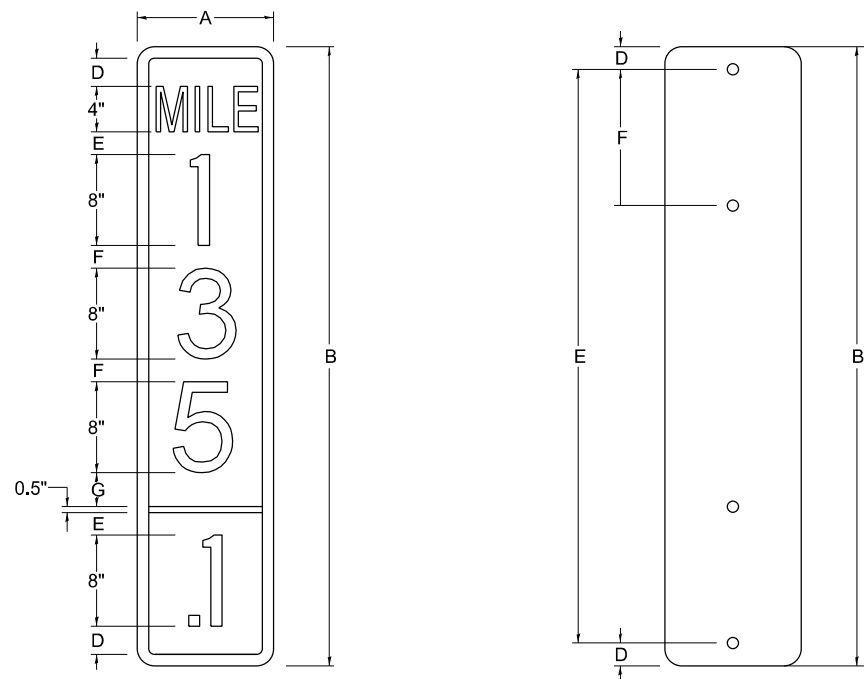
SCALE: NONE SHEET 1 OF 1 SHEETS STA. TO STA.

F.A. RTE.	SECTION	COUNTY	TOTAL SHEETS	SHEET NO.
VAR	2023-921-SG, GM	VAR	13	12
TC-17		CONTRACT NO. 62W43		
ILLINOIS		FED. AID PROJECT		

STANDARD DESIGN FOR MILE POST



SHOULDER SECTIONAL VIEW

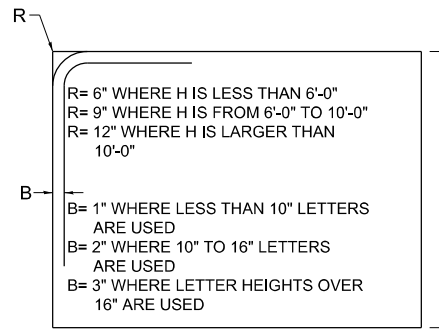


SIGN SIZE	DIMENSIONS							
	A	B	C	D	E	F	G	DIGIT
12 x 24	12.0	24.0	1.5	1.5	1.5	N/A	1.5	1
12 x 36	12.0	36.0	1.5	2.0	2.0	2.0	1.5	2
12 x 48	12.0	48.0	1.5	2.5	2.0	2.0	2.5	3

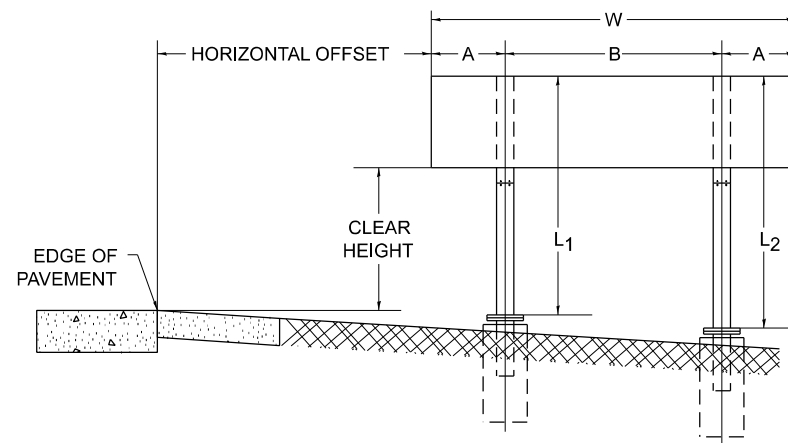
BLANK	A	B	C	D	E	F
B9-1224	12.0	24.0	1.5	2.0	20.0	N/A
B9-1236	12.0	36.0	1.5	2.0	32.0	12.0
B9-1248	12.0	48.0	1.5	2.0	44.0	12.0

SIGN SIZE	SERIES					BORDER	BLANK STD.
	LINES						
	1	2	3	4	5		
12 x 24	4C	8D	4C	N/A	N/A	0.5	B9-1224
12 x 36	4C	8D	8D	4C	N/A	0.5	B9-1236
12 x 48	4C	8D	8D	8D	4C	0.5	B9-1248

BORDER AND RADIUS LAYOUT



MAJOR GUIDE SIGN LAYOUT

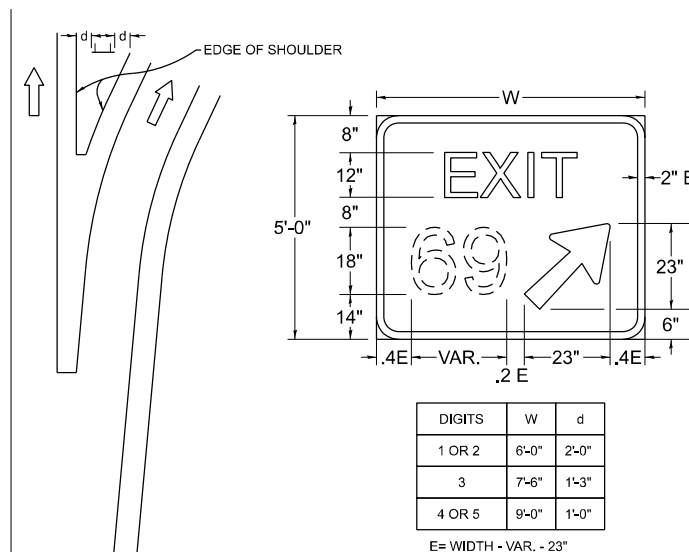


NUMBER OF STEEL SUPPORTS	A	B
2	.2 W	.6 W
3	.15 W	.35 W
4	.125 W	.25 W
5	.1 W	.2 W

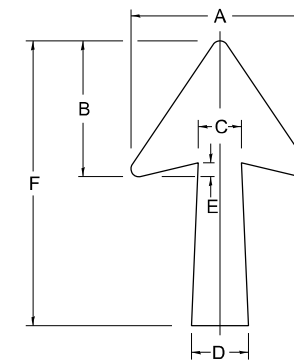
"L1" IS THE LENGTH OF SUPPORT, NOT INCLUDING THE STUB PROJECTION, CLOSEST TO THE EDGE OF THE PAVEMENT.

"A" IS THE DISTANCE FROM THE SIGN EDGE TO THE CENTERLINE OF THE NEAREST SUPPORT. "B" IS THE DISTANCE BETWEEN CENTERLINES OF SUPPORTS.

GORE SIGNS

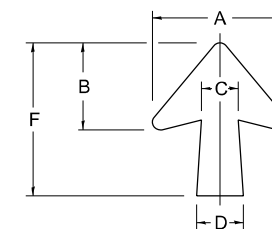


STANDARD ARROWS FOR INTERSTATE GUIDE SIGNS



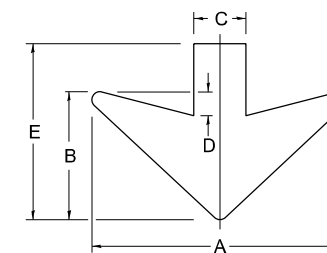
ARROW SYMBOL	A	B	C	D	E	F	R
24 1/4 x 15 1/8	15 1/8	11 1/16	3 3/4	5	1 5/16	24 1/4	1 3/16
29 1/4 x 18 1/4	18 1/4	14	4 1/2	6	1 1/2	29 1/4	3/4
35 3/8 x 22 1/4	22 1/4	17	5 3/8	7 1/8	1 3/4	35 3/8	1
18 1/4 x 11 1/4	11 1/4	8 3/4	3 1/8	3 7/8		18 1/4	

NOTE: D & F ARE RECOMMENDED DIMENSIONS. TAPER SHOULD BE HELD CONSTANT FOR LONGER OR SHORTER SHAFT LENGTHS



ARROW SYMBOL	A	B	C	D	E	F	R
17, x 14,	14,	9Z	3...	4		17,	f
20, x 17,	17,	11f	4...	5†	1	20,	
25 x 21‡	21‡	14,	5	6f	1f	25	1
9CE x 8c	8c	5c	2S	2		9CE	

DOWN ARROWS



ARROW SYMBOL	A	B	C	D	E	R
16 1/2 x 24	24	12	5	1 1/2	16 1/2	3/4
22 x 32	32	16	6 1/2	3	22	1

MODEL: TC-27 (Sheet)
FILE NAME: c:\p\work\wv\coll\ledezma\m\024957\Sign_Maintenance-shr-Dist\Std.sgm

USER NAME = rodrigo.ledezma	DESIGNED -	REVISED - 02-04-2009
DRAWN -	REVISOR -	
PLOT SCALE = 0.16666833 / in.	CHECKED -	REVISOR -
PLOT DATE = 10/23/2023	DATE - 03-08-1984	REVISOR -

**STATE OF ILLINOIS
DEPARTMENT OF TRANSPORTATION**

**MILE POST MARKERS - GORE SIGNS
MAJOR GUIDE SIGN LAYOUT - ARROWS**

SCALE: NONE SHEET 1 OF 1 SHEETS STA. TO STA.

F.A. RTE.	SECTION	COUNTY	TOTAL SHEETS	SHEET NO.
VAR	2023-021-SG, GM	VAR	13	13
TC-27 (TS-2341-1)		CONTRACT NO. 62W43		
ILLINOIS FED. AID PROJECT				