

STATE OF ILLINOIS
DEPARTMENT OF TRANSPORTATION

F.A.S. RTE.	SECTION	COUNTY	TOTAL SHEETS	SHEET NO.
1720	D7 RUMBLE STRIP 2024-1	RICHLAND	15	1
		ILLINOIS	CONTRACT NO. 74B65	

FOR INDEX OF SHEETS, SEE SHEET NO. 2

AADT = 2850 (2021)

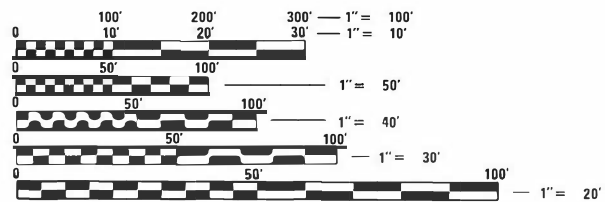
STATION EQUATIONS:

- 20 + 75.79 BK = 28 + 20.00 AH
- 43 + 67.32 BK = 43 + 71.63 AH
- 86 + 50.00 BK = 87 + 11.06 AH
- 109 + 73.68 BK = 109 + 98.79 AH
- 144 + 28.00 BK = 144 + 24.09 AH
- 164 + 22.49 BK = 164 + 29.64 AH
- 204 + 25.96 BK = 204 + 29.47 AH
- 229 + 42.95 BK = 229 + 29.23 AH
- 275 + 84.84 BK = 275 + 94.99 AH
- 297 + 84.13 BK = 298 + 14.36 AH
- 403 + 90.63 BK = 404 + 22.51 AH
- 409 + 43.60 BK = 409 + 78.67 AH
- 431 + 63.14 BK = 431 + 61.70 AH

STRUCTURE OMISSIONS

STATION 67+49 TO STA. 69+21
STRUCTURE # 080-0023
FOX RIVER

STATION 208+72 TO STATION 210+01.00
STRUCTURE # 080-0023
SUGAR CREEK



FULL SIZE PLANS HAVE BEEN PREPARED USING STANDARD ENGINEERING SCALES. REDUCED SIZED PLANS WILL NOT CONFORM TO STANDARD SCALES. IN MAKING MEASUREMENTS ON REDUCED PLANS, THE ABOVE SCALES MAY BE USED.

J.U.L.I.E.
JOINT UTILITY LOCATION INFORMATION FOR EXCAVATION
1-800-892-0123
OR 811

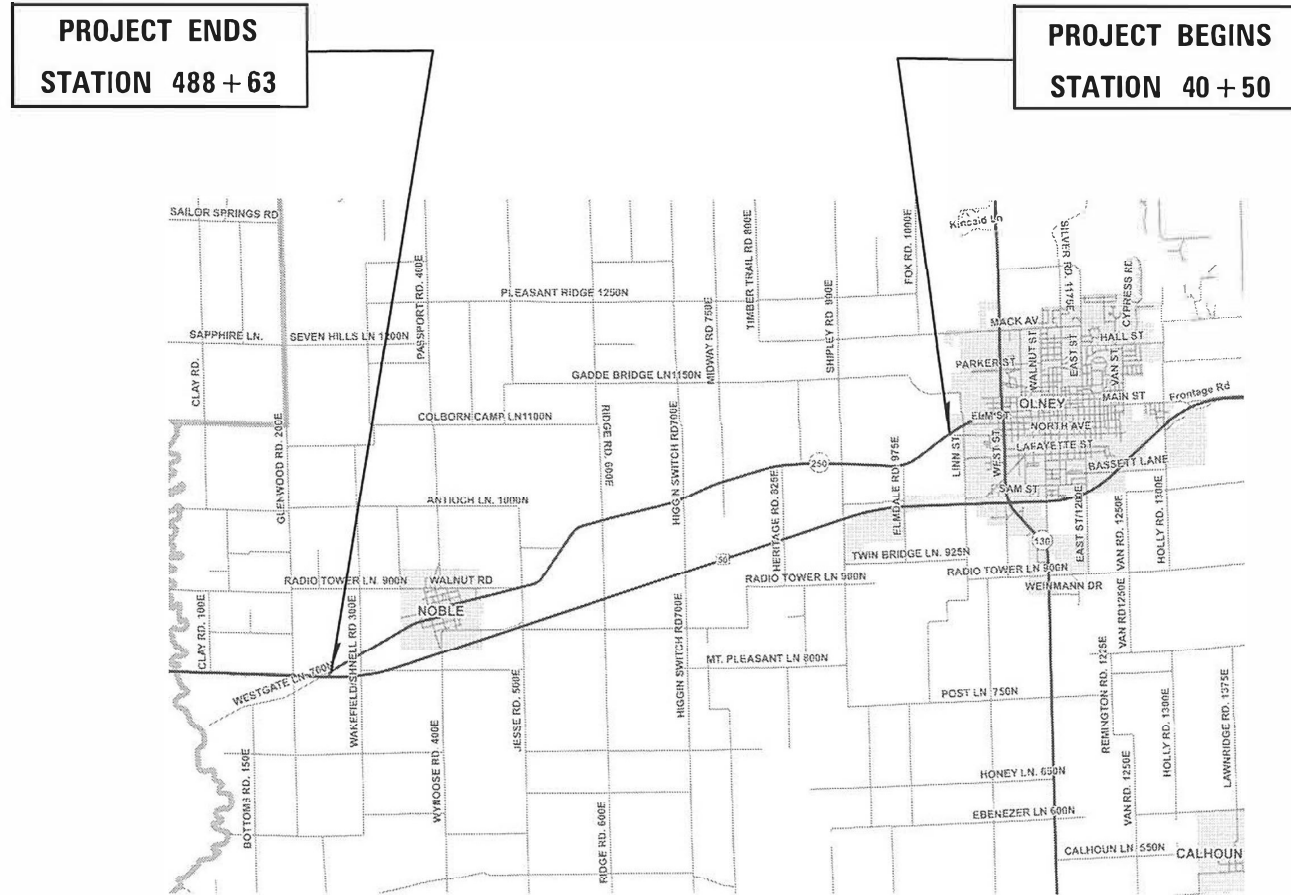
PROJECT ENGINEER BRIAN LEWIS
PROJECT MANAGER MYRA OLTMAN

CONTRACT NO. 74B65

PROPOSED HIGHWAY PLANS

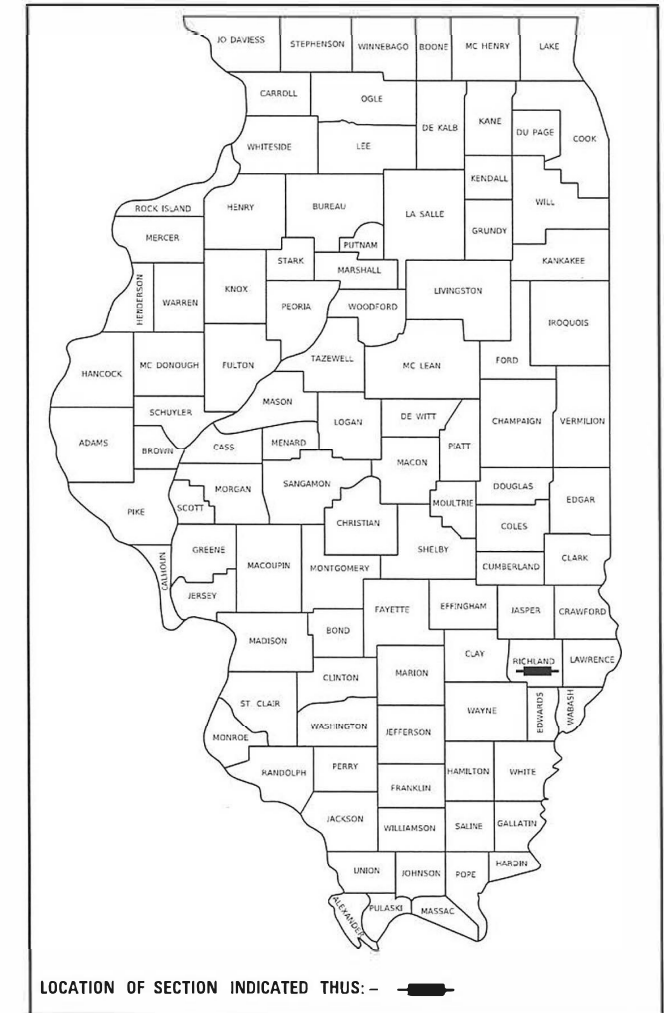
F.A.S. ROUTE 1720 (IL 250)
SECTION D7 RUMBLE STRIPS 2024-1
PROJECT HSIP-WD7A(769)
SAFETY IMPROVEMENTS
RICHLAND COUNTY

C-97-008-23



GROSS LENGTH = 45,408 FT. = 8.60 MILE
NET LENGTH = 45,408 FT. = 8.60 MILE

D-97-008-23



STATE OF ILLINOIS
DEPARTMENT OF TRANSPORTATION

SUBMITTED OCTOBER 23 2023
Jeffery P. Myrsky REGIONAL ENGINEER
December 8, 2023
Scott A. Etk
ENGINEER OF DESIGN AND ENVIRONMENT
December 8, 2023
Stephen M. Lewis
DIRECTOR OF HIGHWAYS PROJECT IMPLEMENTATION

PRINTED BY THE AUTHORITY
OF THE STATE OF ILLINOIS

GENERAL NOTES

THE WORK INCLUDED IN SECTION D7 RUMBLE STRIPS 2024-1 CONSISTS OF CENTERLINE RUMBLE STRIP 8", CENTERLINE PAVEMENT MARKING AND ANY OTHER WORK NECESSARY TO COMPLETE THIS SECTION.

PAINT PAVEMENT MARKING 4" CONSISTS OF 35,107 OF YELLOW. THE PROPOSED PAVEMENT MARKINGS SHALL BE PLACED ON TOP OF THE EXISTING PAVEMENT MARKINGS.

INDEX OF SHEETS

1	COVER SHEET
2	GENERAL NOTES, INDEX OF SHEETS, HIGHWAY STANDARDS AND SCHEDULE OF QUANTITIES
3	SUMMARY OF QUANTITIES
4	PROTECTING OR RESETTING SURVEY MARKERS
5	TYPICAL SECTIONS
6-10	PLAN SHEETS
11	DISTRICT 7 RUMBLE CENTERLINE STRIP DETAIL
12-15	DISTRICT 7 PAVEMENT MARKING DETAILS

THE FOLLOWING STANDARDS ARE A PART OF THESE PLANS AND ARE INCLUDED FOLLOWING THE LAST NUMBERED SHEET OF THE PLANS.

000001-08	STANDARD SYMBOLS, ABBREVIATIONS AND SYMBOLS
001006	DECIMAL OF AN INCH AND OF A FOOT
667101-02	PERMANENT SURVEY MARKERS
701001-02	OFF-ROAD OPERATIONS, 2L, 2W, MORE THAN 15' AWAY
701006-05	OFF-ROAD OPERATIONS, 2L, 2W, 15' TO 24" FROM PAVEMENT EDGE
701301-04	LANE CLOSURE, 2L, 2W, SHORT TIME OPERATIONS
701306-04	LANE CLOSURE, 2L, 2W, SLOW MOVING OPERATIONS DAY ONLY, FOR SPEEDS >= 45 MPH
701311-03	LANE CLOSURE, 2L, 2W, MOVING OPERATIONS - DAY ONLY
701901-09	TRAFFIC CONTROL DEVICES
780001-05	TYPICAL PAVEMENT MARKINGS
781001-04	TYPICAL APPLICATIONS RAISED REFLECTIVE PAVEMENT MARKERS

SCHEDULE

	PAVEMENT MARKING - LINE 4"	CL RUMBLE STRIP 8"
	FEET	FEET
SINGLE YELLOW	15205	8400
DOUBLE YELLOW	7603	3802
CENTERLINE	12298	28179
TOTAL	35107	40381

REV. - MS

MODEL: Default
FILE NAME: P:\Illinois\Bentley.com\PMIDOT\Documents\DOT_Offices\District_7\Project\74865\CADD\data\CAD\sheet\074865-sh-genote.dgn

USER NAME = jessica.hille	DESIGNED -	REVISED -	STATE OF ILLINOIS DEPARTMENT OF TRANSPORTATION	GENERAL NOTES, INDEX OF SHEETS HIGHWAY STANDARDS & SCHEDULE OF QUANTITIES	F.A.S. RTE.	SECTION	COUNTY	TOTAL SHEETS	SHEET NO.	
PLOT SCALE = 100.0000' / in.	DRAWN -	REVISED -			1720	D7 RUMBLE STRIP 2024-1	RICHLAND	15	2	
PLOT DATE = 10/23/2023	CHECKED -	REVISED -			CONTRACT NO. 74865					
	DATE -	REVISED -			SCALE:	SHEET	OF	SHEETS	STA.	TO STA.

PSM to Protect or Reset						
Point No.	Northing	Easting	Station	Offset	Description	Reset Type
100	751550.67	1051707.35	42+35.72 BK = 42+35.92 AH (PT/STA EQ)	0	ALUM DISK WITH DIMPLE	Type I - flush
101	751318.24	1050810.21	33+04.95 (PC)	0	MAG NAIL NEXT TO ALUM DISK	Type I - flush
102	751297.63	1050762.84	32+54.72 BK = 32+53.30 AH (PT/STA EQ)	0	ALUM DISK WITH DIMPLE	Type I - flush
104	751073.79	1050303.76	27+43.89 (PC)	0	RR SPIKE WITH DIMPLE	Type I - flush
105	750822.46	1049838.79	22+15.31 (PT)	0	ALUM DISK WITH DIMPLE	Type I - flush
106	750789.31	1049777.35	21+45.55 (PI)	0	MAG NAIL SET	Type I - flush
107	750755.60	1049716.36	28+20.00 (POC going W) = 20+75.79 (POC going E)	0	MAGNAIL SET 0.5 FT FFOM ALUM DISK - Note: Stationing runs in opposite directions at this point	Type I - flush
109	750273.96	1048908.45	37+60.67 (PCC)	0	ALUM DISK WITH DIMPLE	Type I - flush
111	749930.74	1048408.46	43+67.32 BK = 43+71.63 AH (PT/STA EQ)	0	RR SPIKE WITH DIMPLE	Type I - flush
112	748850.57	1046935.39	61+98.23 (PC)	0	ALUM DISK WITH DIMPLE	Type I - flush
113	748299.12	1045015.54	82+37.90 (PT)	0	ALUM DISK WITH DIMPLE	Type I - flush
114	748329.21	1044604.56	86+50.00 BK = 87+11.06 AH (POT/STA EQ)	0	MAG NAIL SET	Type I - flush
115	748422.74	1043332.85	99+86.18 (PC)	0	ALUM DISK WITH DIMPLE	Type I - flush
117	748472.68	1042346.72	109+73.68 BK = 109+98.79 AH (PT/STA EQ)	0	MAG NAIL SET	Type I - flush
118	748538.95	1039975.09	133+71.30 (PC)	0	RR SPIKE WITH DIMPLE	Type I - flush
120	748519.57	1038919.00	144+28.00 BK = 144+24.09 AH (PT/STA EQ)	0	MAG NAIL SET	Type I - flush
121	748469.08	1038137.20	152+07.49 (PC)	0	ALUM DISK WITH DIMPLE	Type I - flush
122	748263.31	1036942.05	164+22.49 BK = 164+29.64 AH (PT/STA EQ)	0	ALUM DISK WITH DIMPLE	Type I - flush
123	747405.16	1033918.71	195+72.46 (PC)	0	ALUM DISK WITH DIMPLE	Type I - flush
124	747112.33	1033117.88	204+25.96 BK = 204+29.47 AH (PT/STA EQ)	0	ALUM DISK WITH DIMPLE	Type I - flush
125	746299.28	1031319.55	224+02.95 (PC)	0	MAG NAIL SET AT EDGE OF ALUM DISK	Type I - flush
127	746124.56	1030809.68	229+42.95 BK = 229+29.23 AH (PT/STA EQ)	0	ALUM DISK WITH DIMPLE	Type I - flush
128	745815.39	1029525.38	242+49.99 (PC)	0	MAG NAIL SET	Type I - flush
129	745756.91	1029282.33	244+49.99 (PI)	1.06' LT	MAG NAIL SET 0.3 FT AHEAD OF ALUM DISK	Type I - flush
130	745702.49	1029038.34	247+49.99 (PT)	0	MAG NAIL SET	Type I - flush
131	745308.72	1027271.84	265+59.83 (PC)	0	MAG NAIL SET	Type I - flush
133	745067.87	1026275.81	275+84.83 BK = 275+94.99 AH (PT/STA EQ)	0	ALUM DISK WITH DIMPLE	Type I - flush
134	744717.77	1024934.10	289+81.43 (PC)	0	MAG NAIL SET	Type I - flush
135	744270.40	1024287.37	297+84.13 BK = 298+14.36 AH (PT/STA EQ)	0	ALUM DISK WITH DIMPLE	Type I - flush
136	741413.69	1022267.12	333+13.23 (PC)	0	MAG NAIL SET 0.2 FT RT OF BROKEN DISK STEM	Type I - flush

PSM to Protect or Reset						
Point No.	Northing	Easting	Station	Offset	Description	Reset Type
137	740959.96	1021593.15	341+43.93 = BK 341+80.50 AH (PT/STA EQ)	0	ALUM DISK WITH DIMPLE	Type I - flush
138	739571.91	1015660.20	402+73.60 (PC)	0	MAG NAIL SET NEXT TO BROKEN DISK STEM	Type I - flush
140	739482.41	1015604.42	403+90.63 BK = 404+22.51 AH (PT/STA EQ)	0	MAG NAIL SET NEXT TO BROKE DISK STEM	Type I - flush
141	739091.28	1015694.45	408+23.80 (PC)	0	MAG NAIL SET 2" DEEP	Type I - flush
143	738999.76	1015637.43	409+43.60 BK = 409+78.67 AH (PT/STA EQ)	0	RR SPIKE WITH DIMPLE	Type I - flush
144	738686.42	1014288.74	423+63.14 (PC)	0	ALUM DISK WITH DIMPLE	Type I - flush
145	738398.54	1013545.18	431+63.14 BK = 431+61.70 AH (PT/STA EQ)	0	ALUM DISK WITH DIMPLE	Type I - flush
146	735563.35	1008477.55	489+68.45 (PC)	0	MAG NAIL SET 0.3 FT LT OF ORIG DISK HOLE	Type I - flush
148	735465.99	1008373.45	491+12.48 (PT)	0	MAG NAIL SET	Type I - flush
149	735188.50	1008193.03	494+43.47 (END POT)	0	MAG NAIL SET	Type I - flush

MODEL: Default
 FILE: \\blmfc-pub\blmfc-pub\blmfc.com\PIV\DOT\Documents\DOT\Office\Dir\dir_7\Project\74865\CADD\DATA\CAD\Sheet\DOT\74865-Plg-note.dgn

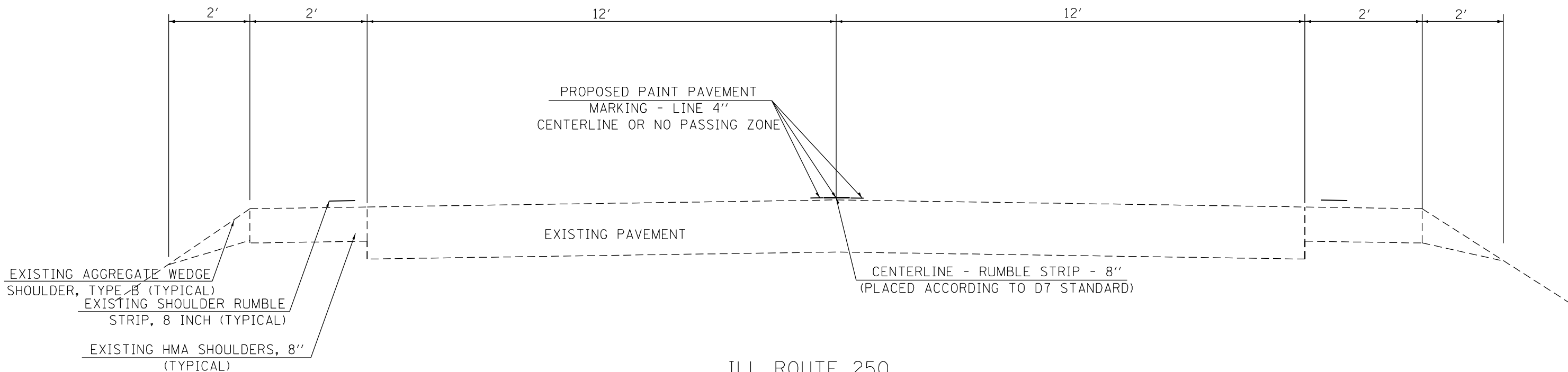
USER NAME = jessica.wille	DESIGNED -	REVISED -
PLOT SCALE = 100,0000' / in.	DRAWN -	REVISED -
PLOT DATE = 10/23/2023	CHECKED -	REVISED -
	DATE -	REVISED -

**STATE OF ILLINOIS
DEPARTMENT OF TRANSPORTATION**

**PROTECTING OR RESETTING
SURVEY MARKERS**

SCALE: SHEET OF SHEETS STA. TO STA.

F.A.S RTE.	SECTION	COUNTY	TOTAL SHEETS	SHEET NO.
1720	D7 RUMBLE STRIP 2024-1	RICHLAND	15	4
CONTRACT NO. 74865			ILLINOIS FED. AID PROJECT	



ILL ROUTE 250
 TYPICAL SECTION
 STATION 494+43.47 TO STATION 40+50
 (SEE COVER SHEET FOR STATION EQUATIONS)

MODEL: Default
 FILE NAME: p:\illinois\pavement\pavement\pavement\CAD\Drawings\DOT\Office\District 7\Projects\74B65\pavement\pavement.dwg

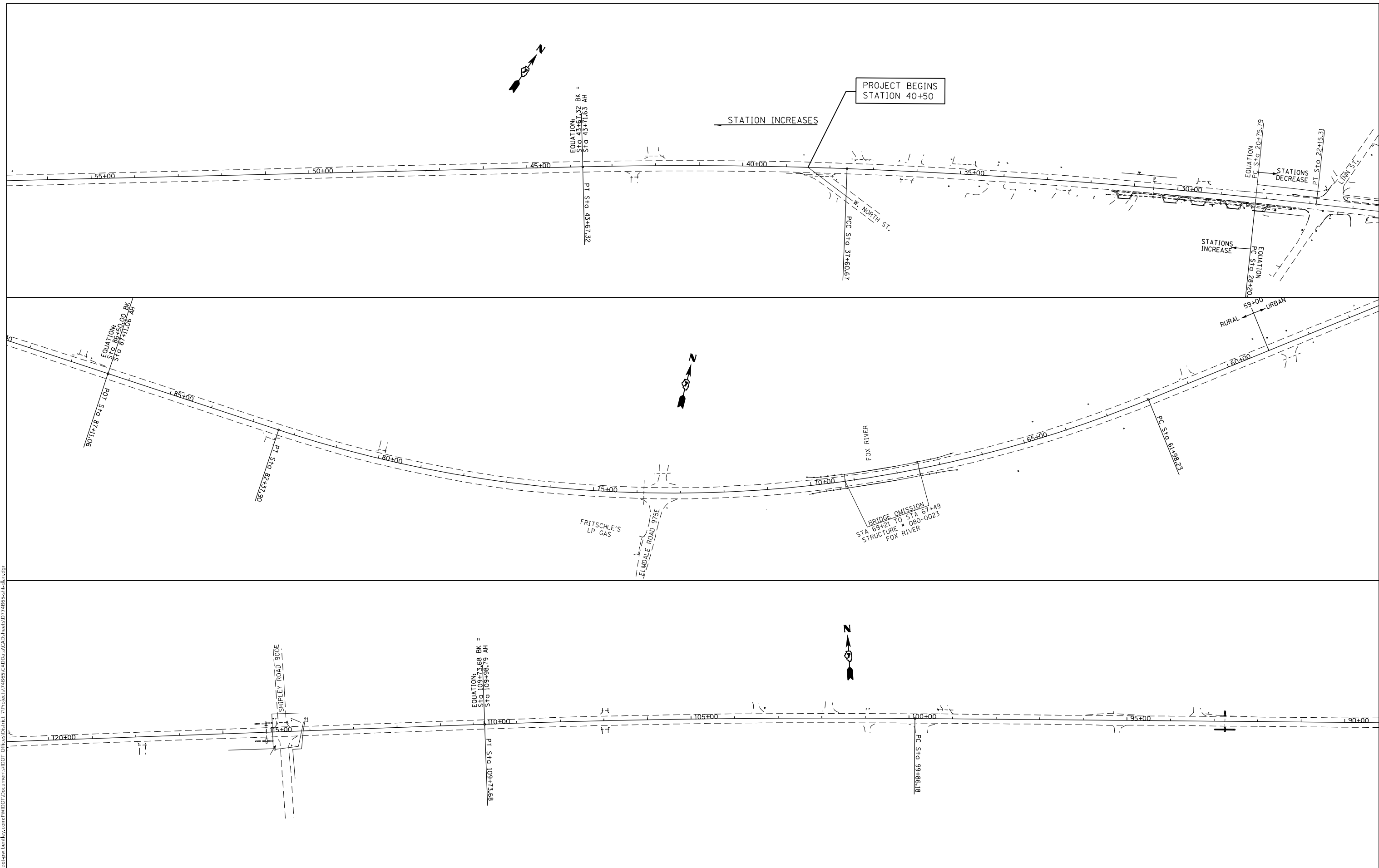
USER NAME = jessica.hille	DESIGNED - M OLTMAN	REVISED -
	DRAWN - M OLTMAN	REVISED -
PLOT SCALE = 100,0000' / in.	CHECKED -	REVISED -
PLOT DATE = 10/23/2023	DATE -	REVISED -

STATE OF ILLINOIS
 DEPARTMENT OF TRANSPORTATION

PROPOSED TYPICAL SECTION			
SCALE:	SHEET	OF SHEETS	STA. TO STA.

F.A.S. RTE.	SECTION	COUNTY	TOTAL SHEETS	SHEET NO.
1720	D7 RUMBLE STRIP 2024-1	RICHLAND	14	5
ILLINOIS FED. AID PROJECT			CONTRACT NO. 74B65	

MODEL: Default
 FILE NAME: p:\project-aw-beadley.com\p\1\DOT\Documents\1\DOT\Office\Director_7\Project\74865\CADD\DATA\CAD\Sheet\ID74865-Plan.dwg



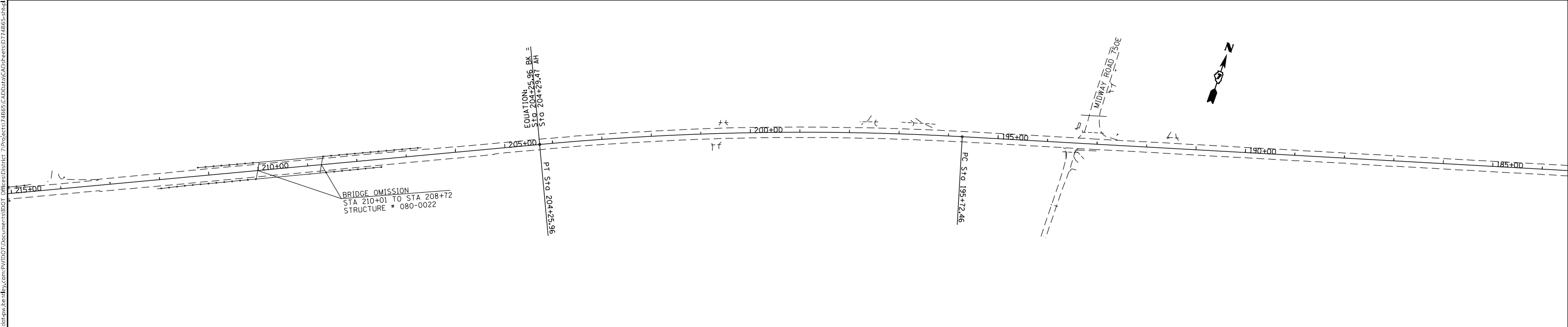
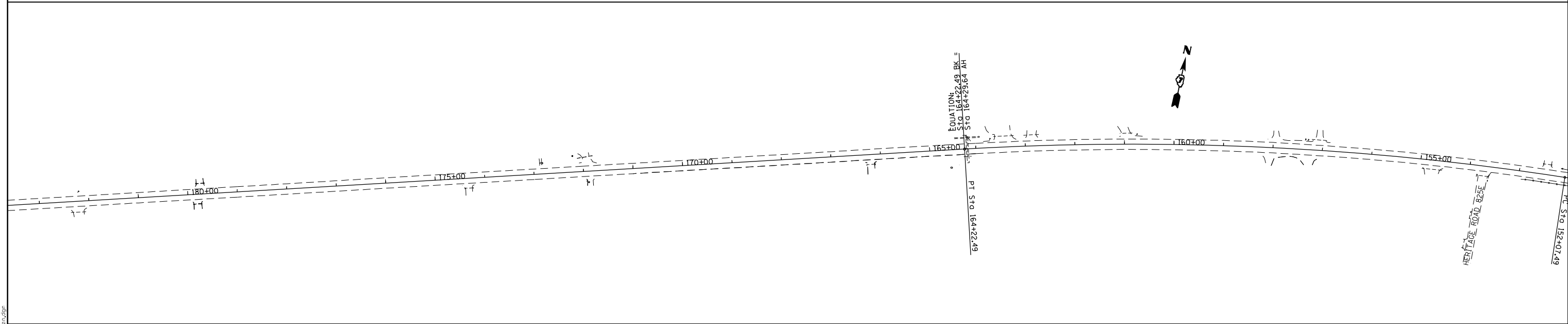
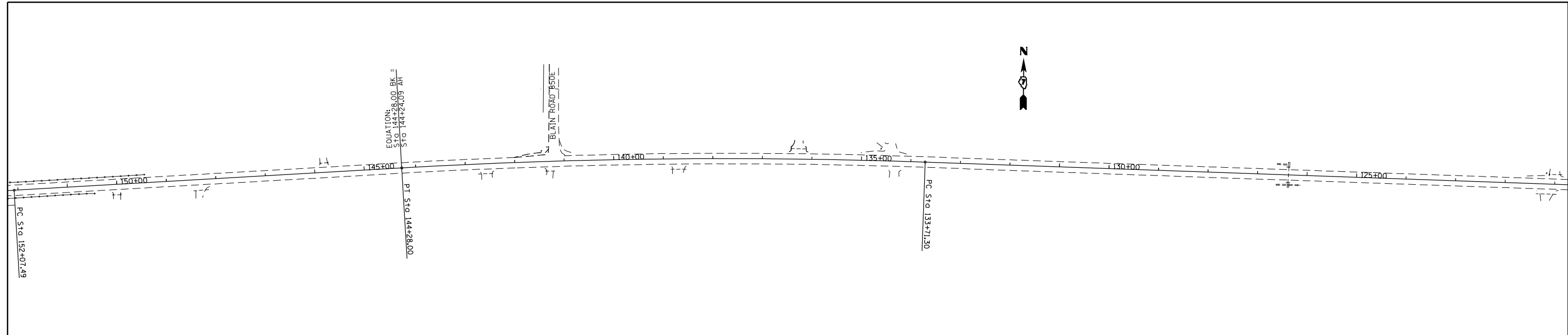
USER NAME = jessica.hille	DESIGNED - M OLTMAN	REVISED -
	DRAWN - M OLTMAN	REVISED -
PLOT SCALE = 200,0000' / in.	CHECKED -	REVISED -
PLOT DATE = 10/23/2023	DATE -	REVISED -

**STATE OF ILLINOIS
 DEPARTMENT OF TRANSPORTATION**

**PLAN VIEW
 STA. 22+15 TO STA 120+00**

SCALE: SHEET OF SHEETS STA. TO STA.

F.A.S RTE.	SECTION	COUNTY	TOTAL SHEETS	SHEET NO.
1720	D7 RUMBLE STRIP 2024-1	RICHLAND	15	6
CONTRACT NO. 74865				
ILLINOIS FED. AID PROJECT				



MODEL: Default
 FILE: \\blmfe-pw-bufile.com\P\W\DOT\Documents\DOT_Offices\Director_7\Projects\74865\CADD\Drawings\CAD\Sheet\74865-Plan.dwg

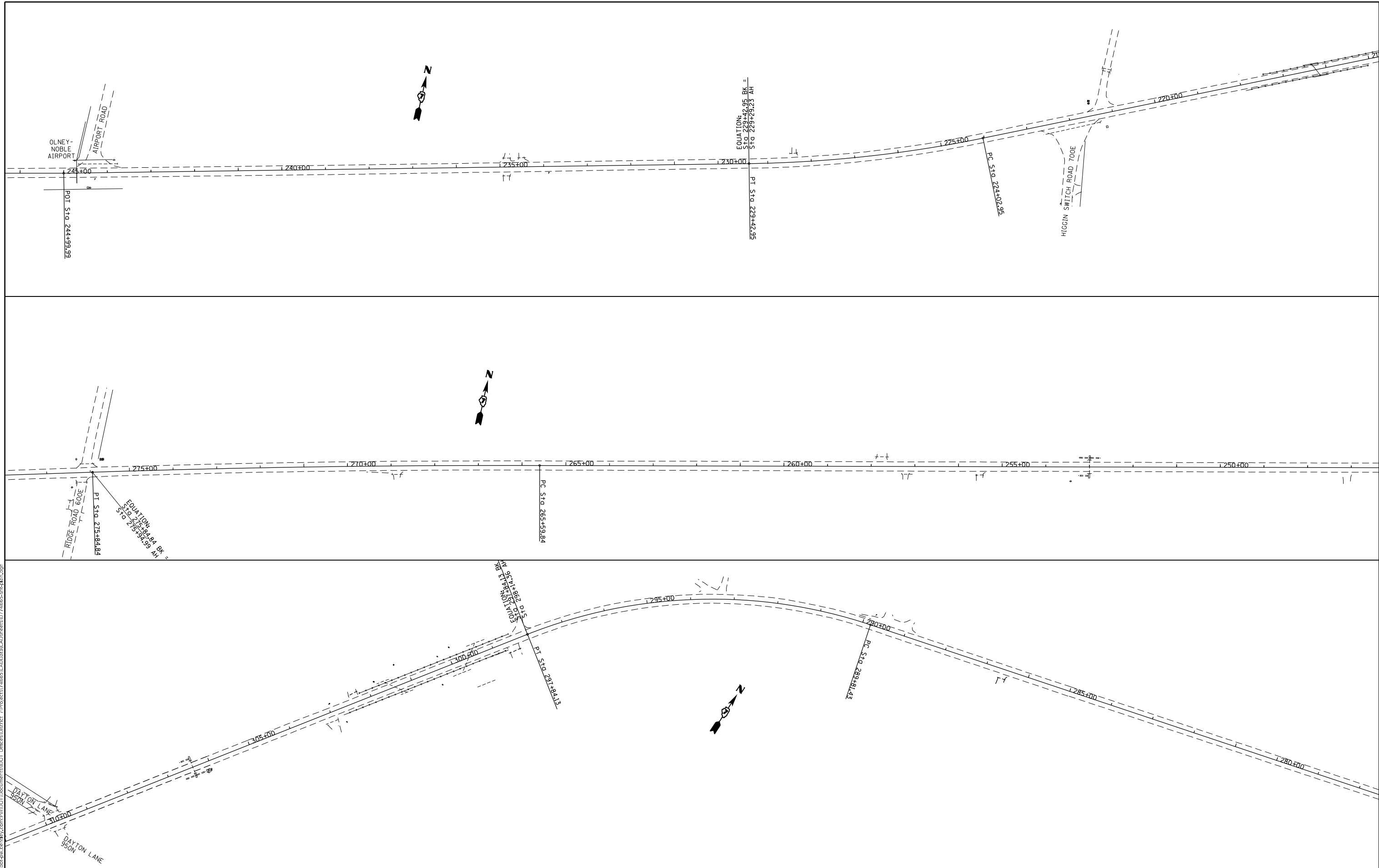
USER NAME = jessica.hille	DESIGNED - M OLTMAN	REVISED -
PLOT SCALE = 200,0000 ' / in.	DRAWN - M OLTMAN	REVISED -
PLOT DATE = 10/23/2023	CHECKED -	REVISED -
	DATE -	REVISED -

STATE OF ILLINOIS
DEPARTMENT OF TRANSPORTATION

PLAN VIEW
STA. 120+00 TO STA. 215+00

SCALE: SHEET OF SHEETS STA. TO STA.

F.A.S. RTE.	SECTION	COUNTY	TOTAL SHEETS	SHEET NO.
1720	D7 RUMBLE STRIP 2024-1	RICHLAND	15	7
CONTRACT NO. 74865				
ILLINOIS FED. AID PROJECT				



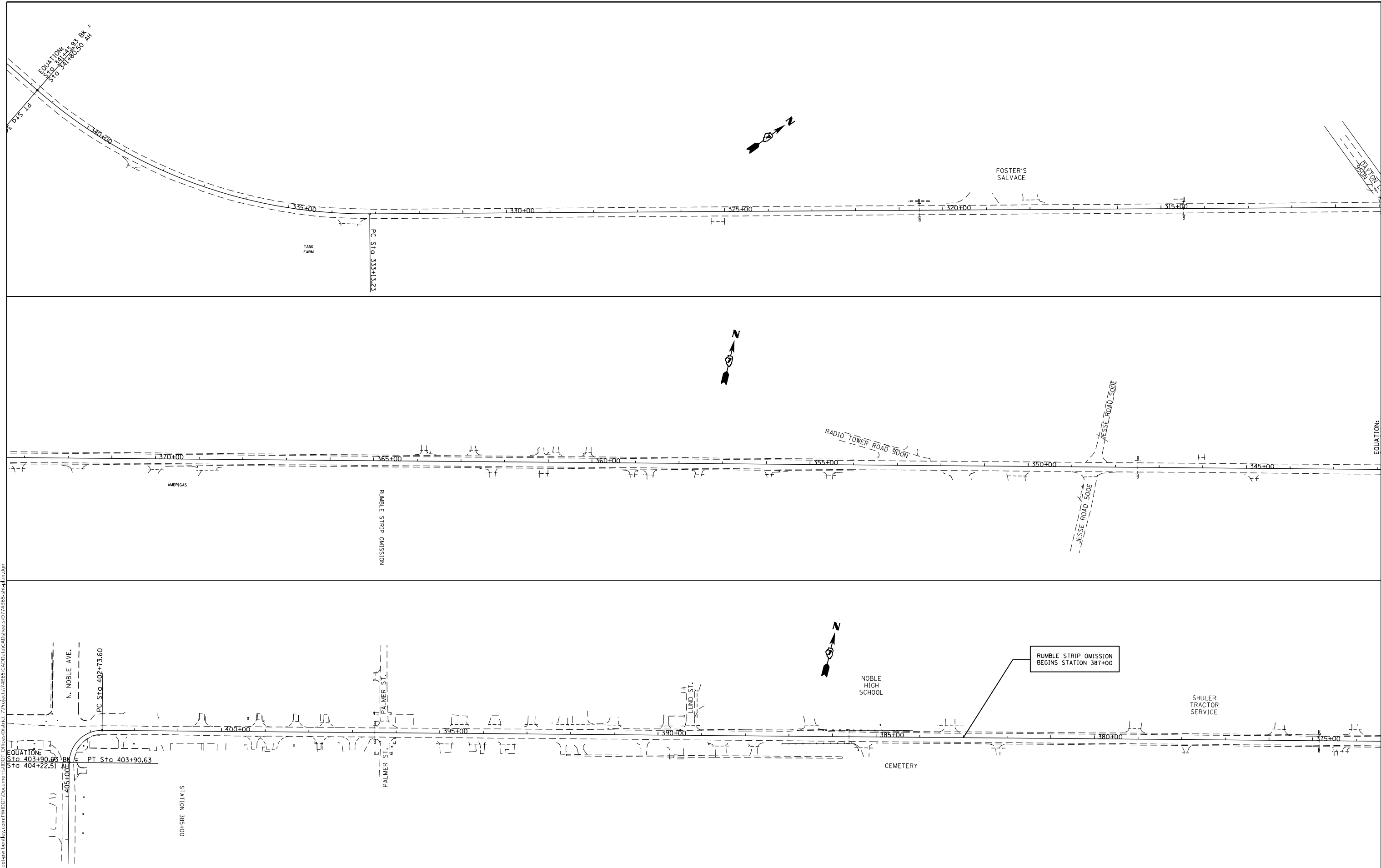
MODEL: Default
 FILE NAME: p:\project\74865\CADD\Drawings\CAD\Sheet\74865-Plan.dwg
 PROJECT: 74865\CADD\Drawings\CAD\Sheet\74865-Plan.dwg

USER NAME = jessica.hille	DESIGNED - M OLTMAN	REVISED -
	DRAWN - M OLTMAN	REVISED -
PLOT SCALE = 200,0000' / in.	CHECKED -	REVISED -
PLOT DATE = 10/23/2023	DATE -	REVISED -

STATE OF ILLINOIS
DEPARTMENT OF TRANSPORTATION

PLAN VIEW			
STA.. 215 + 00 TO STA.. 310 + 00			
SCALE:	SHEET	OF	SHEETS
	TO STA.		TO STA.

F.A.S RTE.	SECTION	COUNTY	TOTAL SHEETS	SHEET NO.
1720	D7 RUMBLE STRIP 2024-1	RICHLAND	15	8
ILLINOIS FED. AID PROJECT			CONTRACT NO. 74865	



MODEL: Default
 FILE: NAME: p:\project-aw-bead\paw.com\p\indot\documents\dot\office\dir\dir_7\project\74865\CADD\data\CAD\sheet\74865-she1.dwg
 PROJECT: 74865

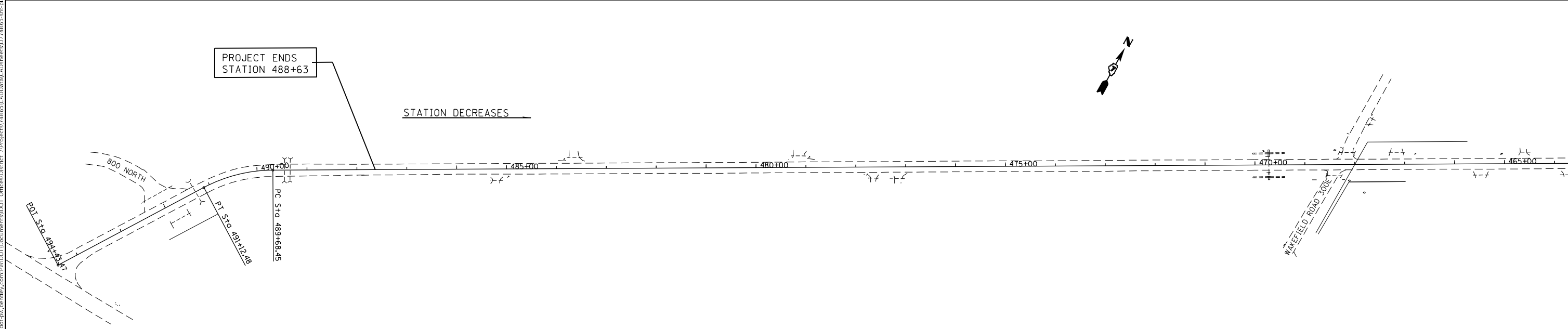
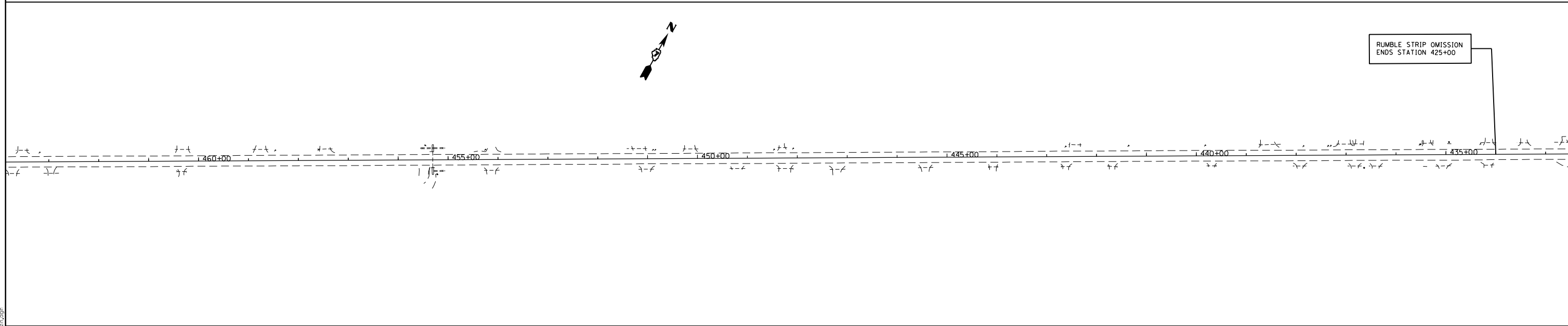
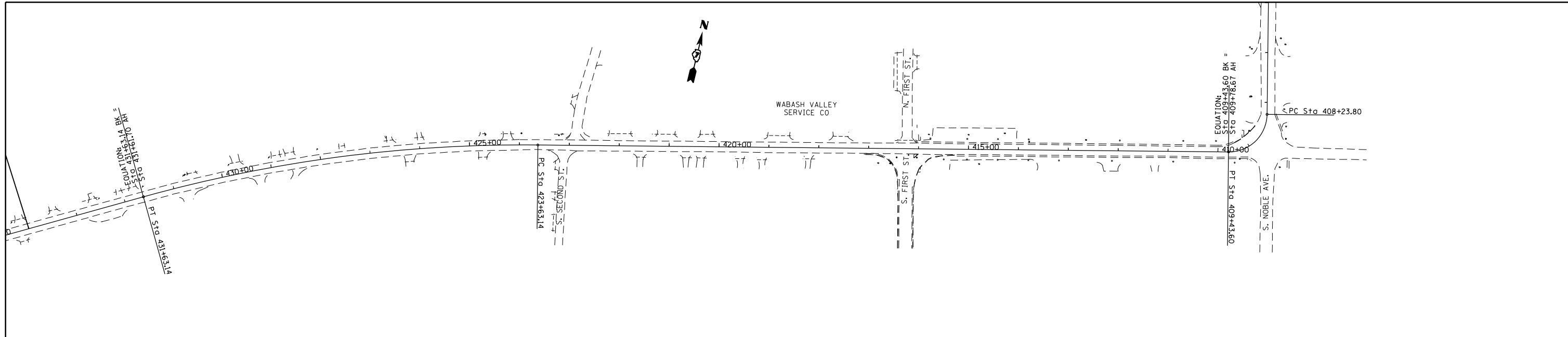
USER NAME = jessica.hille	DESIGNED - M OLTMAN	REVISED -
DRAWN - M OLTMAN	REVISED -	
PLOT SCALE = 200,0000 ' / in.	CHECKED -	REVISED -
PLOT DATE = 10/23/2023	DATE -	REVISED -

STATE OF ILLINOIS
DEPARTMENT OF TRANSPORTATION

PLAN VIEW
STA. 310 + 00 TO STA. 407 + 00

SCALE: SHEET OF SHEETS STA. TO STA.

F.A.S. RTE.	SECTION	COUNTY	TOTAL SHEETS	SHEET NO.
1720	D7 RUMBLE STRIP 2024-1	RICHLAND	15	9
ILLINOIS FED. AID PROJECT			CONTRACT NO. 74865	



MODEL: Default
 FILE: \\mdepc-pw\lisset-pw-beadefw.com\PI\DOT\Documents\DOT Office\Director_T\Project\74865\CADD\DATA\CAD\Sheet\74865-Plan.dgn

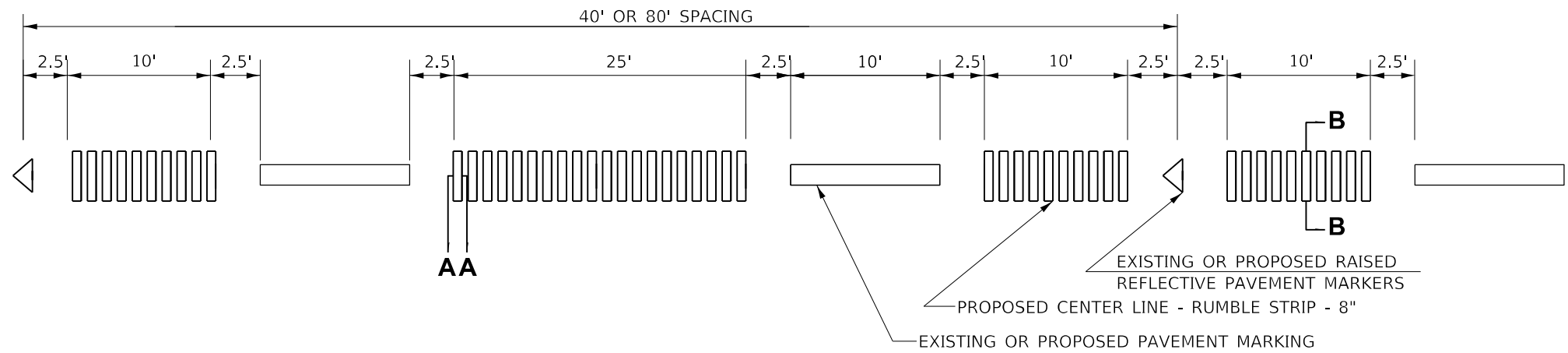
USER NAME = jessica.hille	DESIGNED - M OLTMAN	REVISED -
	DRAWN - M OLTMAN	REVISED -
PLOT SCALE = 200,0000' / in.	CHECKED -	REVISED -
PLOT DATE = 10/23/2023	DATE -	REVISED -

STATE OF ILLINOIS
DEPARTMENT OF TRANSPORTATION

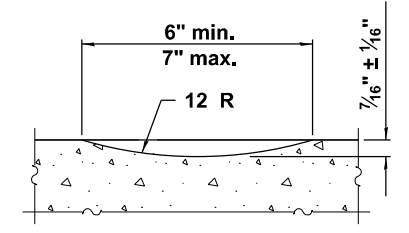
PLAN VIEW
STA. 407+00 TO STA. 494+00

SCALE: SHEET OF SHEETS STA. TO STA.

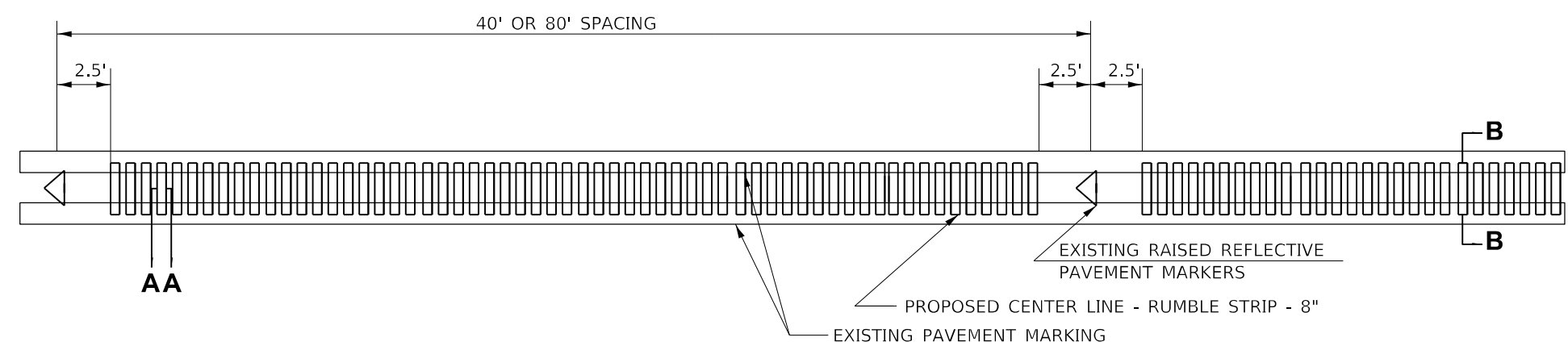
F.A.S. RTE.	SECTION	COUNTY	TOTAL SHEETS	SHEET NO.
1720	D7 RUMBLE STRIP 2024-1	RICHLAND	15	10
CONTRACT NO. 74865				
ILLINOIS FED. AID PROJECT				



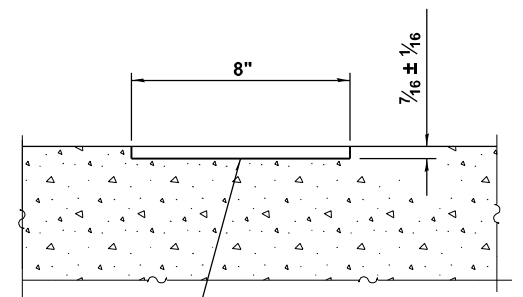
CENTERLINE RUMBLE STRIP DETAIL



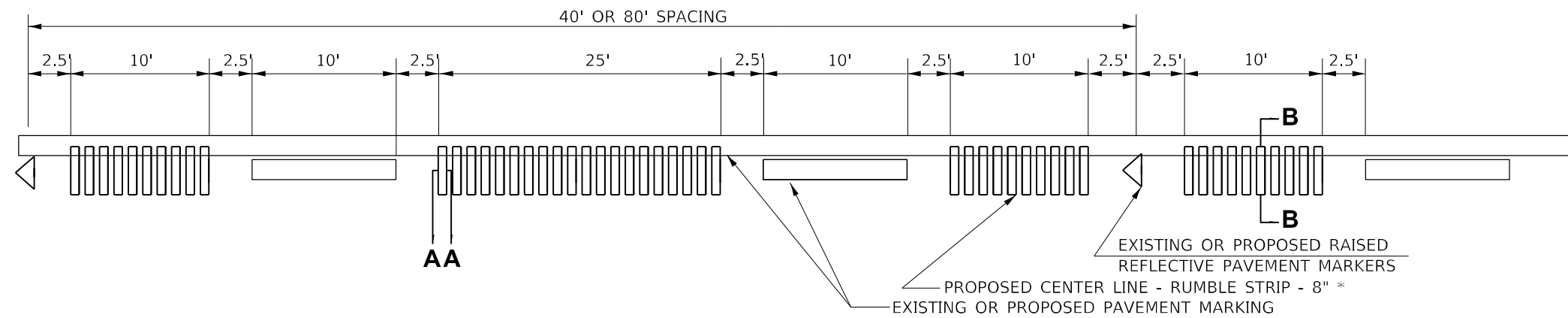
SECTION A-A



CENTERLINE RUMBLE STRIP DETAIL WITH DOUBLE NO PASSING ZONE



SECTION B-B



CENTERLINE RUMBLE STRIP DETAIL WITH SINGLE NO PASSING ZONE

1. THE PROPOSED CENTERLINE PAVEMENT MARKINGS SHALL BE PLACED AFTER THE CONSTRUCTION OF THE RUMBLE STRIP.
2. RUMBLE STRIP IS TO BE SPACED BETWEEN RRPMS AT THE PROPOSED SPACING ACCORDING TO STANDARD 781001 TYPICAL APPLICATION OF RAISED REFLECTIVE PAVEMENT MARKERS AND AS SHOWN ON THE PLANS.
3. PAVEMENT MARKINGS USED ON THE CENTERLINE RUMBLE STRIP SHALL BE PAVEMENT MARKING OF THE TYPE AND WIDTH SPECIFIED IN THE PLANS.

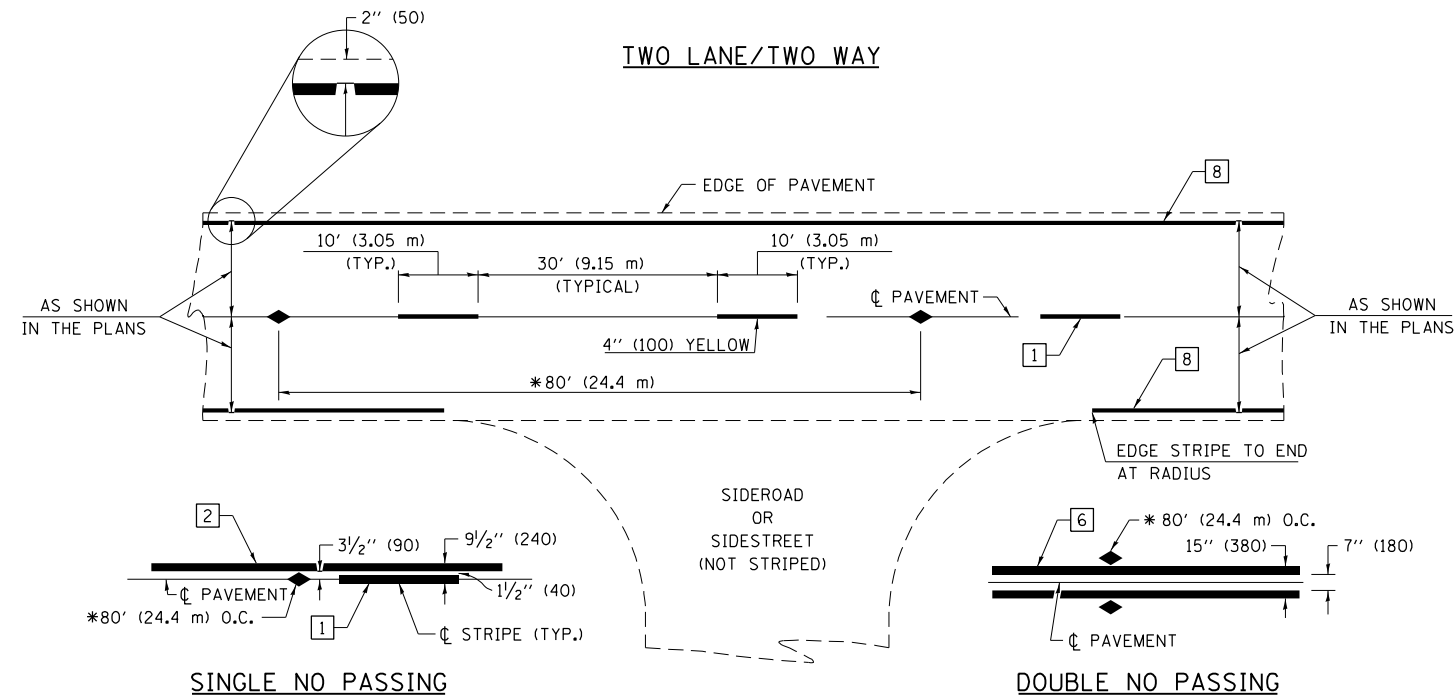
MODEL: Default
 FILE: \\blm\p\sub\paw\bea\paw.com\p\indot\documents\indot_offices\dir\dir_7\Project\74865\CADD\DATA\CAD\Sheet\74865-RR-Details.dgn

USER NAME = jessica.hille	DESIGNED -	REVISED -
	DRAWN -	REVISED -
PLOT SCALE = 100,0000' / in.	CHECKED -	REVISED -
PLOT DATE = 10/23/2023	DATE -	REVISED -

**STATE OF ILLINOIS
DEPARTMENT OF TRANSPORTATION**

CENTERLINE RUMBLE STRIP DETAIL PROPOSED PAVEMENT MARKINGS & EXISTING RRPMS				
SCALE:	SHEET	OF	SHEETS	STA. TO STA.

F.A.S. RTE.	SECTION	COUNTY	TOTAL SHEETS	SHEET NO.
1720	D7 RUMBLE STRIP 2024-1	RICHLAND	15	11
ILLINOIS FED. AID PROJECT			CONTRACT NO. 74865	



* REDUCE TO 40' (12.2 m) O.C. ON CURVES WITH POSTED OR ADVISORY SPEEDS OF 45 mph (70 km/h) OR LESS.

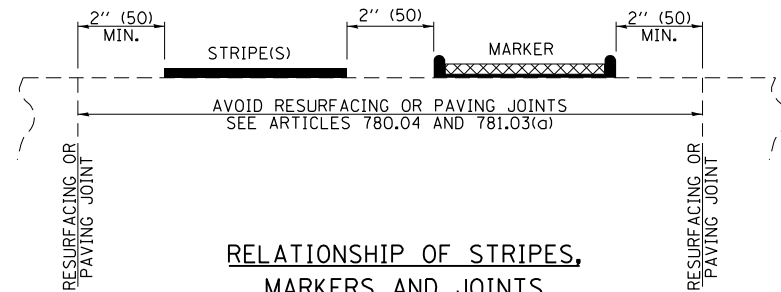
PAVEMENT MARKING LEGEND

- 1 4" (100) SKIP-DASH (YELLOW)
- 2 4" (100) SOLID (YELLOW)
- 3 12" (300) DIAGONAL (YELLOW)
- 4 4" (100) DOUBLE YELLOW (NARROW)
- 5 12" (300) SOLID WHITE
- 6 4" (100) DOUBLE YELLOW (WIDE)
- 7 6" (150) SKIP-DASH (WHITE)
- 8 4" (100) SOLID (WHITE)
- 9 12" (300) DIAGONAL (WHITE)
- 10 6" (150) SOLID (WHITE)
- 11 24" (600) STOP BAR (WHITE)
- 12 8" (200) SOLID (WHITE)
- 13 4" (100) PARKING WHITE

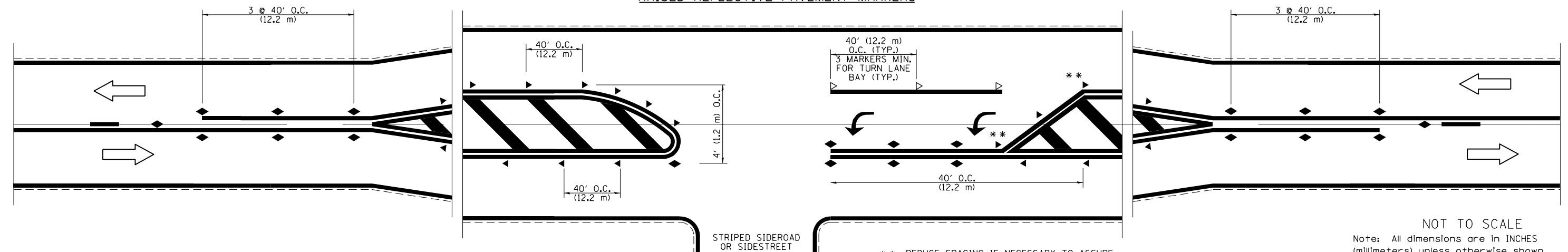
TYPICAL PAVEMENT MARKERS LEGEND

- ◆ TWO-WAY AMBER MARKER
- ▶ ONE-WAY AMBER MARKER
- ▷ ONE-WAY CRYSTAL MARKER

RELATIONSHIP OF STRIPES, MARKERS AND JOINTS



RAISED REFLECTIVE PAVEMENT MARKERS



** REDUCE SPACING IF NECESSARY TO ASSURE MARKERS AT CORNER POINTS.

NOT TO SCALE
Note: All dimensions are in INCHES (millimeters) unless otherwise shown.

DISTRICT 7 DETAIL NO. 7800001

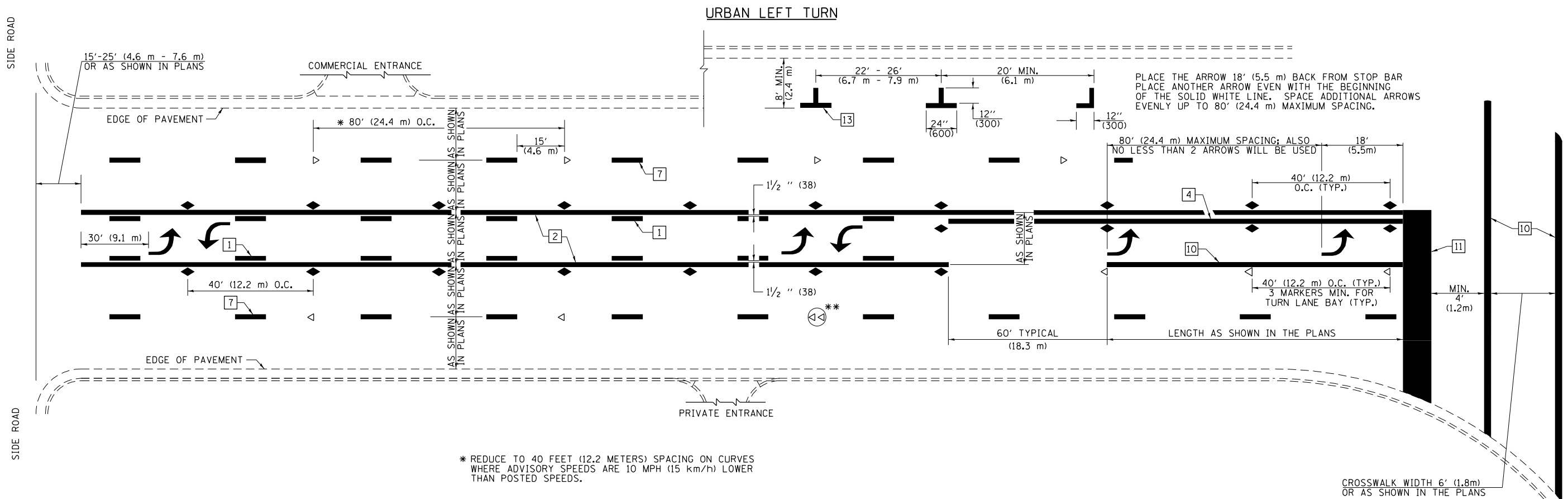
FILE NAME =	USER NAME = jessica.hille	DESIGNED -	REVISED - NAS 06/22
pw:\1ldot-pw\bentley.com\PWIDOT\Documents\1DOT Offices\District 7\Projects\74865\CADD\Drawings\Drawings\74865-sht-details.dgn		CHECKED -	REVISED -
PLOT SCALE = 100.0000' / in.		DATE -	REVISED -
PLOT DATE = 10/23/2023			

**STATE OF ILLINOIS
DEPARTMENT OF TRANSPORTATION**

**PAVEMENT MARKING AND RAISED REFLECTIVE PAVEMENT MARKERS
(RURAL & URBAN APPLICATIONS)**

SCALE: SHEET NO. 1 OF 4 SHEETS STA. TO STA.

F.A.S. RTE.	SECTION	COUNTY	TOTAL SHEETS	SHEET NO.
1720	D7 RUMBLE STRIP 2024-1	RICHLAND	15	12
CONTRACT NO. 74B65				
ILLINOIS FED. AID PROJECT				



* REDUCE TO 40 FEET (12.2 METERS) SPACING ON CURVES WHERE ADVISORY SPEEDS ARE 10 MPH (15 km/h) LOWER THAN POSTED SPEEDS.

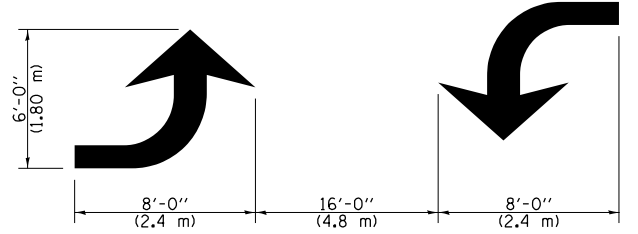
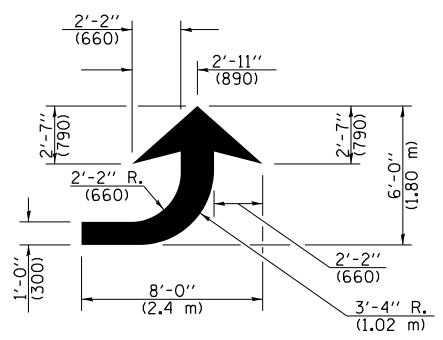
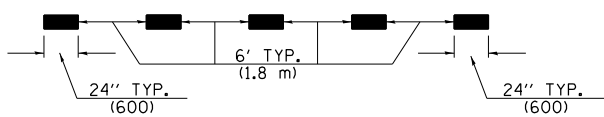
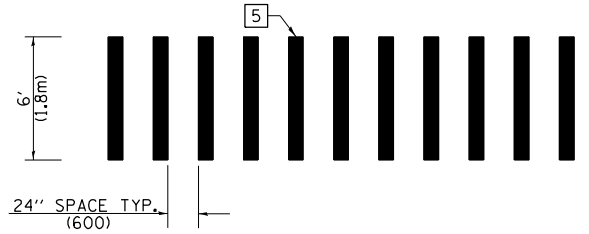
** DOUBLE LANE LINE MARKERS SHALL BE SPECIFIED AND SPACED AS SHOWN IN HIGHWAY STANDARD 781001 FOR MULTI-LANE DIVIDED AND UNDIVIDED HIGHWAYS.

PAVEMENT MARKING LEGEND

- 1 4" (100) SKIP-DASH (YELLOW)
- 2 4" (100) SOLID (YELLOW)
- 3 12" (300) DIAGONAL (YELLOW)
- 4 4" (100) DOUBLE YELLOW (NARROW)
- 5 12" (300) SOLID WHITE
- 6 4" (100) DOUBLE YELLOW (WIDE)
- 7 6" (150) SKIP-DASH (WHITE)
- 8 4" (100) SOLID (WHITE)
- 9 12" (300) DIAGONAL (WHITE)
- 10 6" (150) SOLID (WHITE)
- 11 24" (600) STOP BAR (WHITE)
- 12 8" (200) SOLID (WHITE)
- 13 4" (100) PARKING WHITE

GENERAL NOTES

1. TURN ARROW PAIRS SHALL BE PLACED AT 250' (75 m) INTERVALS AND SHALL BE EVENLY SPACED BETWEEN BOTH ENDS OF THE BIDIRECTIONAL LEFT TURN LANE. USE A MINIMUM OF TWO PAIRS PER BLOCK.
2. THE SOLID YELLOW PAVEMENT MARKINGS [2] SHOULD GENERALLY START OR END NEAR THE RADIUS POINT OF EACH STREET RETURN EXCEPT WHERE ONE OR BOTH ENDS WOULD INCLUDE STOP BARS.
3. THE SKIP-DASH PAVEMENT MARKINGS [1] OR [7] SHOULD BE CENTERED BETWEEN BOTH ENDS OF EACH CITY BLOCK AND SHALL BE PLACED SO THEY LINE UP ACROSS FROM EACH OTHER.
4. USE LARGE ARROW SIZE FOR BOTH RURAL AND URBAN LOCATIONS. (SEE SECTION 780 FOR SYMBOLS TABLE)
5. LANE LINE EXTENSIONS SHALL BE THE SAME COLOR AND WIDTH AS THE LANE LINE BEING EXTENDED.
6. ALL WHITE SKIP-DASH LINES SHALL BE 6" IN WIDTH.



TYPICAL DOUBLE TURN ARROWS (WHITE)

LEFT ARROW
REVERSE FOR RIGHT ARROW
AREA = 15.6 SQ. FT. (1.47 m²)
(WHITE)

NOT TO SCALE

Note: All dimensions are in INCHES (millimeters) unless otherwise shown.

DISTRICT 7 DETAIL NO. 78000001

FILE NAME =	USER NAME = jessica.hille	DESIGNED -	REVISED - NAS 06/22
pw:\idot-pw\bentley.com\PWIDOT\Documents\IDOT Offices\District 7\Projects\74865\CADD\Drawings\74865-sht-details.dgn		CHECKED -	REVISED -
PLOT SCALE = 100.0000' / 1"		DATE -	REVISED -
PLOT DATE = 10/23/2023			

**STATE OF ILLINOIS
DEPARTMENT OF TRANSPORTATION**

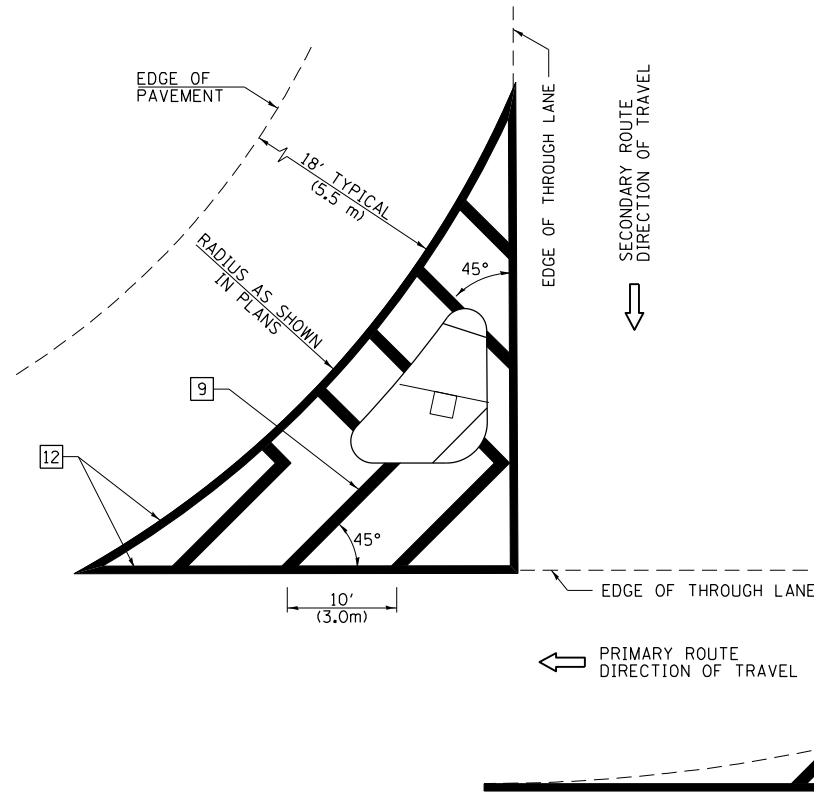
**PAVEMENT MARKING AND RAISED REFLECTIVE PAVEMENT MARKERS
(RURAL & URBAN APPLICATIONS)**

SCALE: SHEET NO. 2 OF 4 SHEETS STA. TO STA.

F.A.S. RTE.	SECTION	COUNTY	TOTAL SHEETS	SHEET NO.
1720	D7 RUMBLE STRIP 2024-1	RICHLAND	15	13
				CONTRACT NO. 74B65
ILLINOIS FED. AID PROJECT				

ISLANDS

OPTION 1

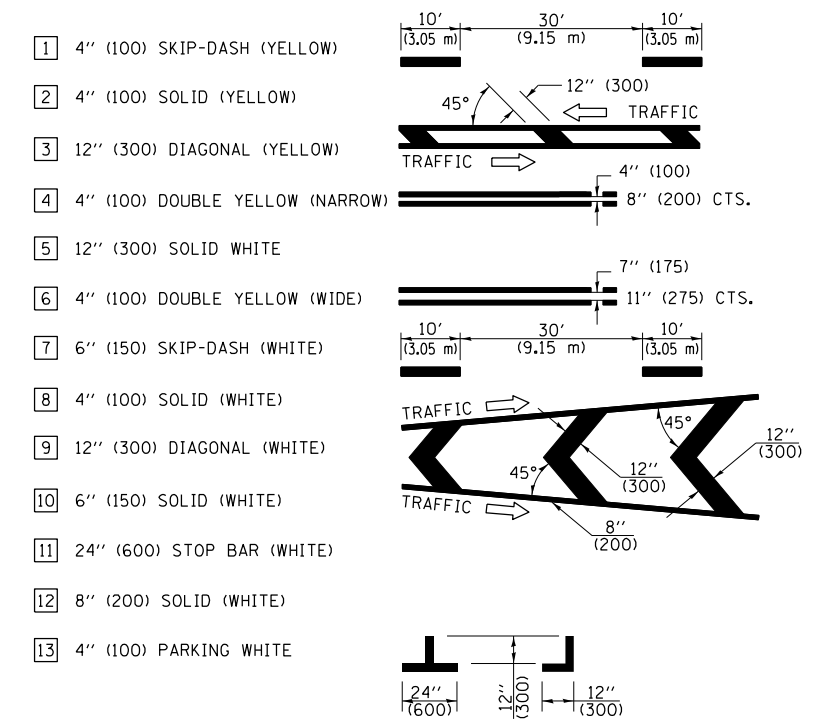


GENERAL NOTES

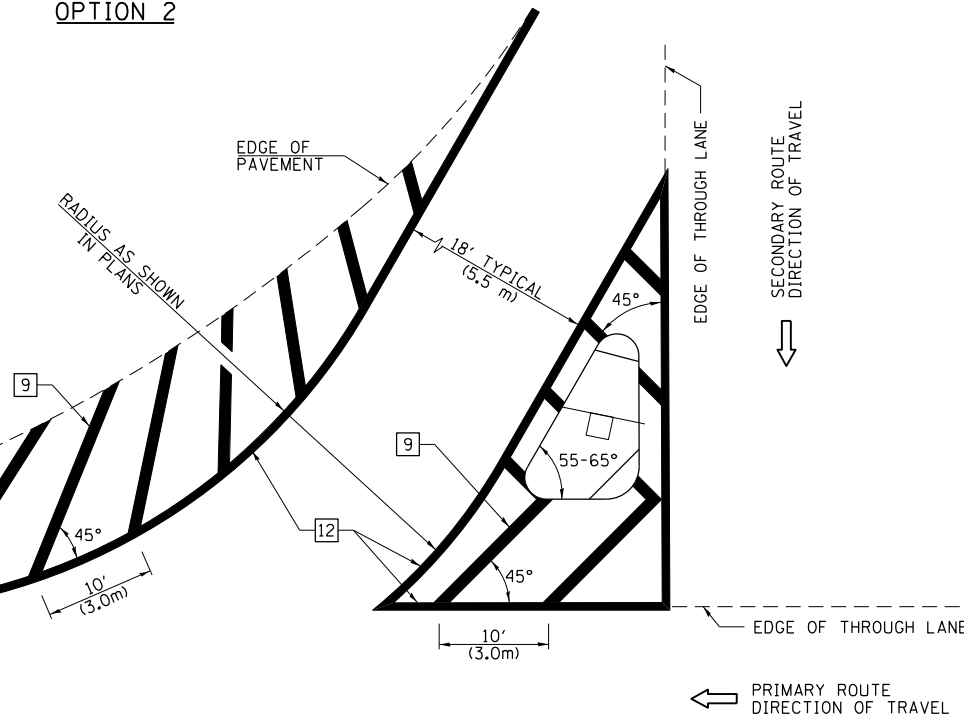
1. RAISED AND CORRUGATED MEDIANS SHALL BE OUTLINED WITH [2].
2. SOME OF THE INFORMATION INCLUDED WITH THIS DETAIL MAY NOT BE APPLICABLE TO THIS IMPROVEMENT.
3. PAVEMENT MARKINGS ARE TO BE EXTENDED THROUGH OMISSIONS WHEN APPLICABLE.
4. FINAL PAVEMENT MARKINGS SHALL BE IN PLACE PRIOR TO PLACING ANY RAISED REFLECTIVE PAVEMENT MARKERS.
5. THE FOLLOWING CRITERIA SHALL BE USED FOR SELECTING THE DIAGONAL PAVEMENT MARKING SPACING:

< 30 MPH (< 50 km/h)	15' (4.5 m)
30-45 MPH (50-75 km/h)	20' (6.0 m)
> 45 MPH (> 75 km/h)	30' (9.0 m)
6. THE USE OF ISLAND STRIPING OPTION 1 OR OPTION 2 SHALL BE AS SHOWN ON THE PLANS.

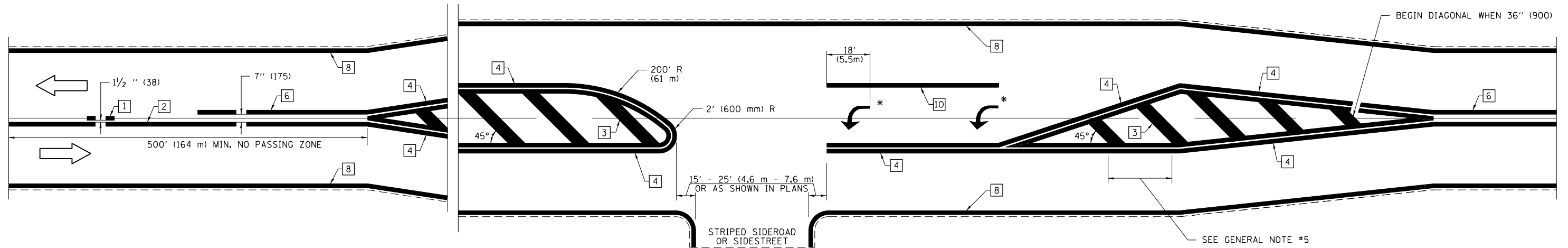
PAVEMENT MARKING LEGEND



OPTION 2



RURAL LEFT TURN STRIPING



* PLACE AN ARROW 18' (5.5 m) BACK FROM END OF THE SOLID WHITE LINE. PLACE ANOTHER ARROW EVEN WITH THE BEGINNING OF THE SOLID WHITE LINE. SPACE ADDITIONAL ARROWS EVENLY UP TO 80' (24.4 m) MAXIMUM SPACING. USE MINIMUM OF 2 ARROWS.

NOT TO SCALE

Note: All dimensions are in INCHES (millimeters) unless otherwise shown.

DISTRICT 7 DETAIL NO. 7800001

FILE NAME =	USER NAME = jessica.hille	DESIGNED -	REVISED - NAS 06/22
p:\idot-pw\bentley.com\PWIDOT\Documents\IDOT Offices\District 7\Projects\74865\CADD\Drawings\Drawings\74865-shd-details.dgn		CHECKED -	REVISED -
PLOT SCALE = 100.0000' / 1"		DATE -	REVISED -
PLOT DATE = 10/23/2023			

**STATE OF ILLINOIS
DEPARTMENT OF TRANSPORTATION**

**PAVEMENT MARKING AND RAISED REFLECTIVE PAVEMENT MARKERS
(RURAL & URBAN APPLICATIONS)**

SCALE: SHEET NO. 3 OF 4 SHEETS STA. TO STA.

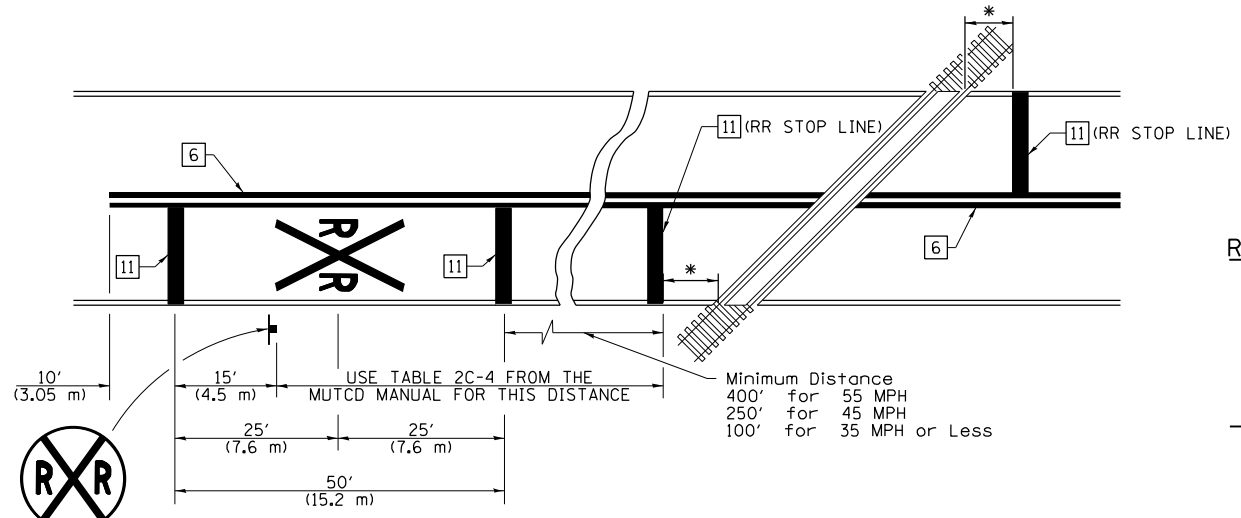
F.A.S. RTE.	SECTION	COUNTY	TOTAL SHEETS	SHEET NO.
1720	D7 RUMBLE STRIP 2024-1	RICHLAND	15	14
CONTRACT NO. 74B65				
ILLINOIS FED. AID PROJECT				

SUPPLEMENTAL PAVEMENT MARKING TREATMENT FOR RAILROAD-HIGHWAY GRADE CROSSING

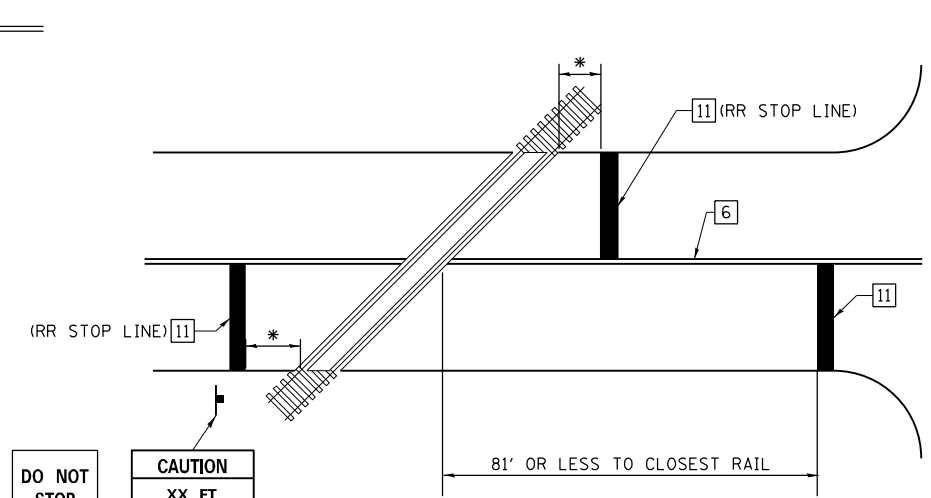
PAVEMENT MARKING LEGEND

- 1 4" (100) SKIP-DASH (YELLOW)
 - 2 4" (100) SOLID (YELLOW)
 - 3 12" (300) DIAGONAL (YELLOW)
 - 4 4" (100) DOUBLE YELLOW (NARROW)
 - 5 12" (300) SOLID WHITE
 - 6 4" (100) DOUBLE YELLOW (WIDE)
 - 7 6" (150) SKIP-DASH (WHITE)
 - 8 4" (100) SOLID (WHITE)
 - 9 12" (300) DIAGONAL (WHITE)
 - 10 6" (150) SOLID (WHITE)
 - 11 24" (600) STOP BAR (WHITE)
 - 12 8" (200) SOLID (WHITE)
 - 13 4" (100) PARKING WHITE
-

PAVEMENT MARKINGS AT RAILROAD-HIGHWAY GRADE CROSSING



RAILROAD CROSSING WITH NON-SIGNALIZED INTERSECTION

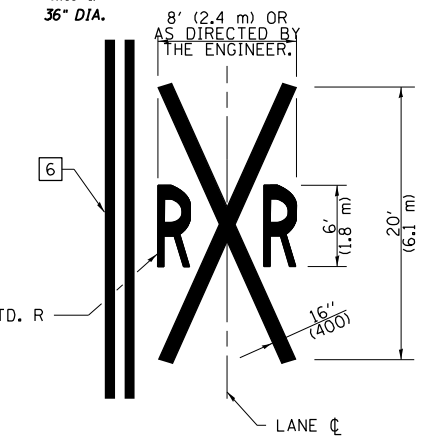


NOTES

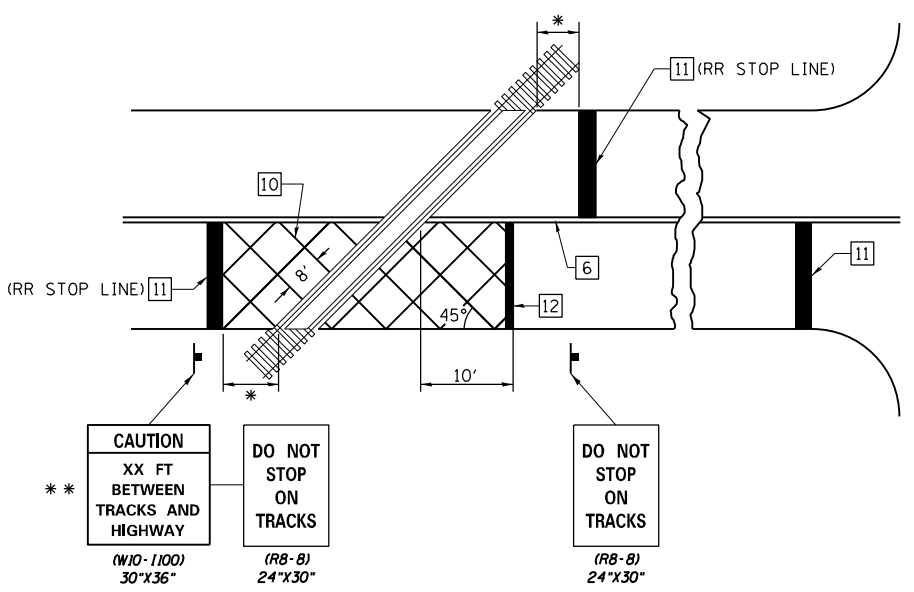
THE TRAVERSE SPREAD OF THE "X" MAY VARY ACCORDING TO LANE WIDTH.

ON MULTI-LANE ROADS, THE STOP LINES SHALL EXTEND ACROSS ALL APPROACH LANES AND SEPARATE RRR SYMBOLS SHALL BE PLACED ADJACENT TO EACH OTHER IN EACH LANE.

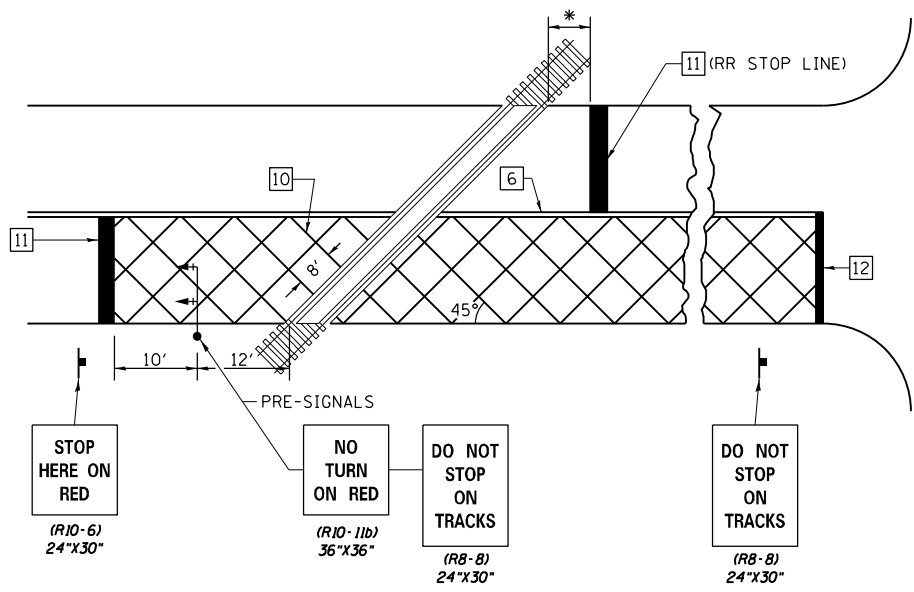
WHEN THE PAVEMENT MARKING SYMBOL IS USED, A PORTION OF THE SYMBOL SHOULD BE LOCATED DIRECTLY ADJACENT TO THE ADVANCE WARNING SIGN (W10-1) AS PLACED BY TABLE II-1, CONDITION B OF THE MUTCD.



RAILROAD CROSSING WITH INTERCONNECT ONLY

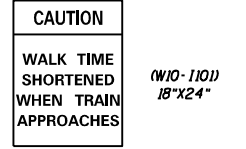


RAILROAD CROSSING WITH INTERCONNECT AND PRE-SIGNALS



GENERAL NOTES

- SUPPLEMENTAL PAVEMENT MARKINGS TO BE INSTALLED ONLY ON APPROACHES TO INTERSECTIONS CONTROLLED BY TRAFFIC SIGNALS WHICH ARE INTERCONNECTED WITH THE RAILROAD WARNING SIGNALS.
- EXTEND PAVEMENT MARKINGS TO THE INTERSECTION ONLY WHERE PRE-SIGNALS ARE USED.
- WHEN PEDESTRIAN SIGNALS ARE PRESENT WITH INTERCONNECTED SIGNALS, WARNING SIGN W10-1101 (18"X24") SHALL BE PLACED NEAR EACH PEDESTRIAN SIGNAL HEAD. COUNTDOWN PEDESTRIAN SIGNAL HEADS SHALL NOT BE UTILIZED ALONG WITH INTERCONNECTED SIGNALS.
- PLEASE REFER TO THE IDOT BUREAU OF OPERATION MEMO OPS T-06 DATED DECEMBER 1, 2020 FOR ADDITIONAL INFORMATION.



* 15' FROM NEAR RAIL OR 8' FROM AND PARALLEL TO GATE IF PRESENT

** WARNING SIGN W10-1100 SHALL BE USED AS AN INTERIM MEASURE AT INTERCONNECTED SIGNAL LOCATIONS WHERE PRE-SIGNALS ARE TO BE INSTALLED IN THE FUTURE. THIS SIGN SHALL BE REMOVED WHEN THE PRE-SIGNALS ARE INSTALLED AND THE PAVEMENT MARKINGS ARE EXTENDED TO THE INTERSECTION.

NOT TO SCALE
Note: All dimensions are in INCHES (millimeters) unless otherwise shown.

DISTRICT 7 DETAIL NO. 78000001

FILE NAME =	USER NAME = jessica.hille	DESIGNED -	REVISED - NAS 06/22
pw:\idot-pw\bentley.com\PWDOT\Documents\IDOT Offices\District 7\Projects\74865\CADD\Drawings\Drawings\74865-sht-details.dgn		CHECKED -	REVISED -
PLOT SCALE = 100.0000' / in.		DATE -	REVISED -
PLOT DATE = 10/23/2023			

STATE OF ILLINOIS
DEPARTMENT OF TRANSPORTATION

PAVEMENT MARKING AND RAISED REFLECTIVE PAVEMENT MARKERS
(RURAL & URBAN APPLICATIONS)

SCALE: SHEET NO. 4 OF 4 SHEETS STA. TO STA.

F.A.S. RTE.	SECTION	COUNTY	TOTAL SHEETS	SHEET NO.
1720	D7 RUMBLE STRIP 2024-1	RICHLAND	15	15
CONTRACT NO. 74B65				
ILLINOIS FED. AID PROJECT				