

STATE OF ILLINOIS
DEPARTMENT OF TRANSPORTATION

**PROPOSED
HIGHWAY PLANS**

**ROUTE FAP 301 (US 20)
SECTION 1CR
CURE-IN-PLACE CULVERT LINING
WINNEBAGO COUNTY**

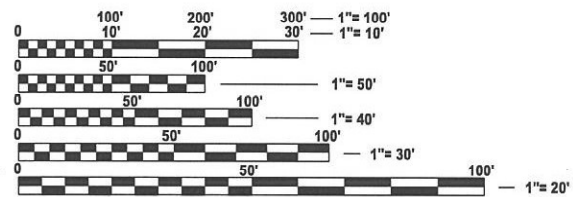
C-92-016-24

F.A. RTE.	SECTION	COUNTY	TOTAL SHEETS	SHEET NO.
301	1CR	WINNEBAGO	3	1
		ILLINOIS	CONTRACT NO. 64S84	

P-92-048-24

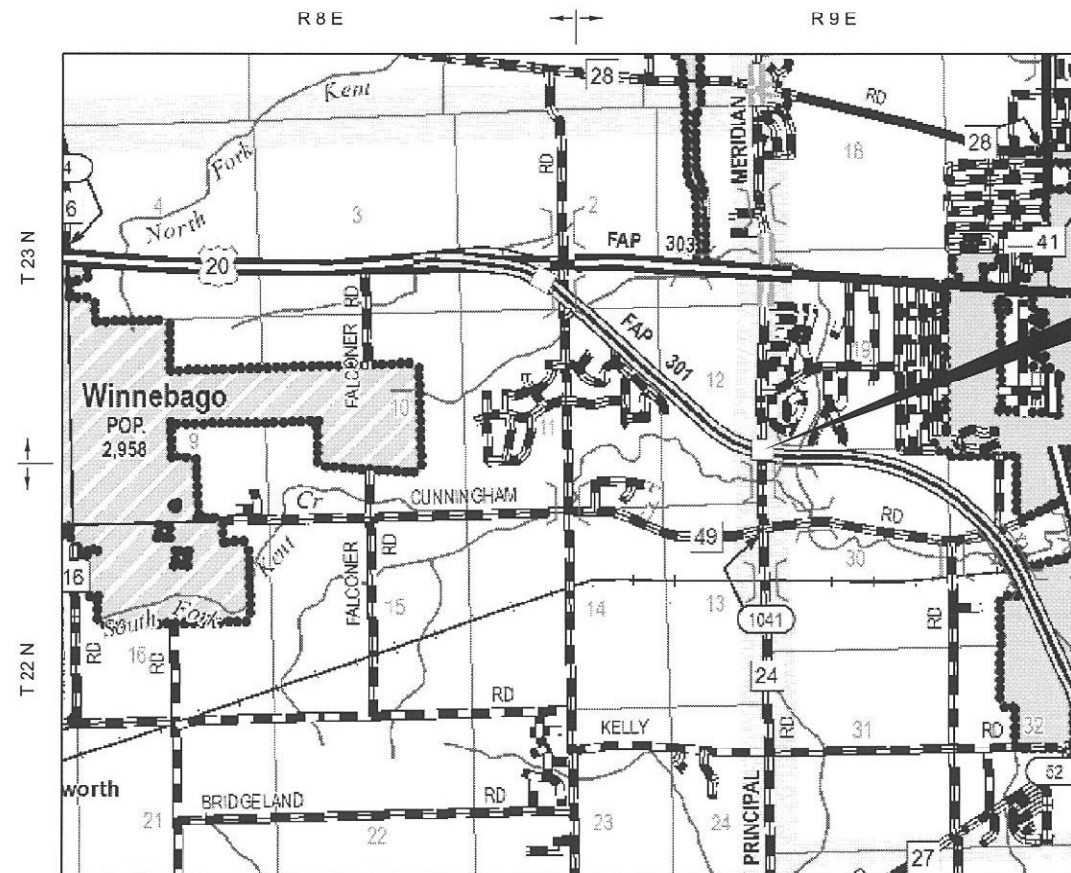


TOWNSHIP SECTIONS ()



FULL SIZE PLANS HAVE BEEN PREPARED USING STANDARD ENGINEERING SCALES. REDUCED SIZED PLANS WILL NOT CONFORM TO STANDARD SCALES. IN MAKING MEASUREMENTS ON REDUCED PLANS, THE ABOVE SCALES MAY BE USED.

J.U.L.I.E.
JOINT UTILITY LOCATION INFORMATION FOR EXCAVATION
1-800-892-0123
OR 811



PROJECT LOCATION

STATE OF ILLINOIS
DEPARTMENT OF TRANSPORTATION

SUBMITTED Oct 13 20 23
Masood Ahmad
REGIONAL ENGINEER
December 8, 2023
S.E.A. Etk
ENGINEER OF DESIGN AND ENVIRONMENT
December 8, 2023
Steph M. Lewis
DIRECTOR OF HIGHWAYS PROJECT IMPLEMENTATION

**PRINTED BY THE AUTHORITY
OF THE STATE OF ILLINOIS**

CONTRACT NO. 64S84

INDEX OF SHEETS

- 001 COVER SHEET
- 002 INDEX OF SHEETS, STANDARDS, TYPICAL, AND SUMMARY OF QUANTITIES
- 003 PLAN SHEET

GENERAL NOTES

THIS PROJECT CONSISTS OF PLACING A CURED-IN-PLACE LINER IN (2) 36" PIPE CULVERTS CARRYING THE DITCH ALONG US 20 UNDER MERIDIAN RD OVERPASS. CONTRACTOR SHALL CONFIRM THE LOCATION WITH THE FIELD ENGINEER PRIOR TO WORK STARTING.

HIGHWAY STANDARDS

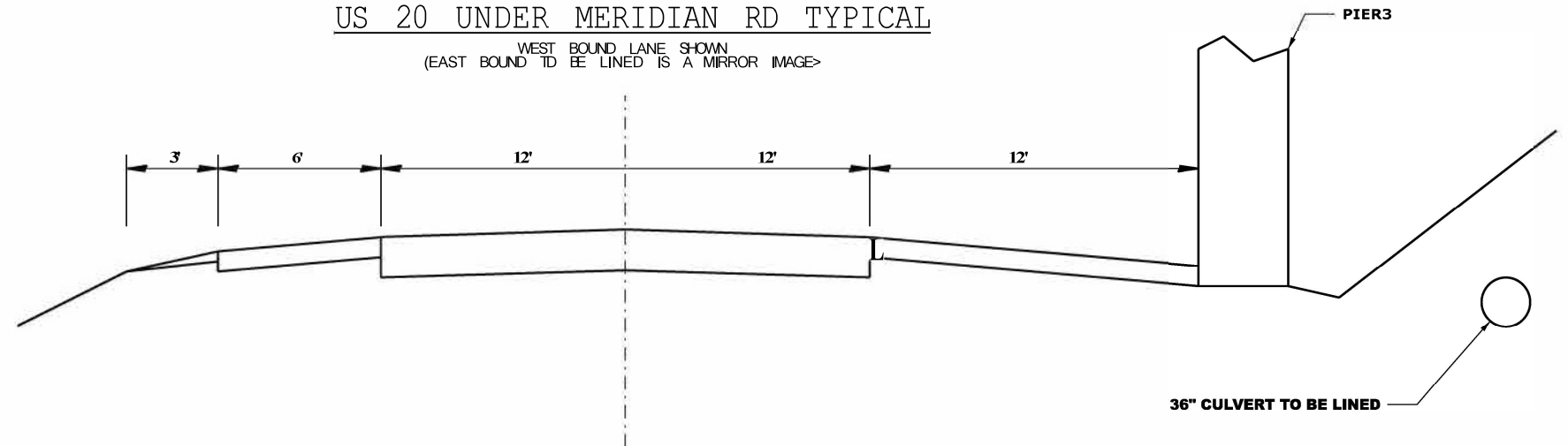
- 701101-05 OFF-RD OPERATIONS, MULTILANE 15' (4.5M) TO 24' (600MM) FROM PAVEMENT EDGE
- 701400-12 APPROACH TO LANE CLOSURE, FREEWAY/ EXPRESSWAY
- 701406-13 LANE CLOSURE, FREEWAY/ EXPRESSWAY, DAY OPERATIONS ONLY
- 701901-09 TRAFFIC CONTROL DEVICES

SUMMARY OF QUANTITIES

SUMMARY OF QUANTITIES				CONSTR. CODE
				100% STATE
CODE NO.	ITEM	UNIT	TOTAL QUANTITY	PIPE CULVERT
				** 0004 S.N.
67100100	MOBILIZATION	LSUM	1	1
70100700	TRAFFIC CONTROL AND PROTECTION, STANDARD 701406	LSUM	1	1
X5430236	CURED-IN-PLACE PIPE LINER, 36"	FOOT	270	270

US 20 UNDER MERIDIAN RD TYPICAL

WEST BOUND LANE SHOWN
(EAST BOUND TO BE LINED IS A MIRROR IMAGE)



MODEL: 03_SHT INDEX
 FILE NAME: p:\p03\p03\pub\index\DOT Office\Drawings\210RD Project\Operations\Maintenance Section\Drawings\Winnebago\Operations\Contract Maintenance\210RD\64S84 - US 20 Culvert Lining\CAD\sheet\64S84 - 03 - Index Sheet.dgn

USER NAME = Nicholas Vock	DESIGNED -	REVISED -
	DRAWN -	REVISED -
PLOT SCALE = 0.1667/in.	CHECKED -	REVISED -
PLOT DATE = 10/16/2023	DATE -	REVISED -

STATE OF ILLINOIS
DEPARTMENT OF TRANSPORTATION

INDEX OF SHEETS & HIGHWAY STANDARDS

SCALE: 1 SHEET OF SHEETS STA TOSTA.

F A P RTE.	SECTION	COUNTY	TOTAL SHEETS	SHEET NO.
301	1CR	WINNEBAGO	3	2
ILLINOIS FED. AID PROJECT				

