

Pay Item	Description	Unit	Quantity
* 20100110	TREE REMOVAL (6 TO 15 UNITS DIAMETER)	UNIT	124
* 20100210	TREE REMOVAL (OVER 15 UNITS DIAMETER)	UNIT	632
20200100	EARTH EXCAVATION	CU YD	12,623
20400800	FURNISHED EXCAVATION	CU YD	1,446
20800150	TRENCH BACKFILL	CU YD	731
21001000	GEOTECHNICAL FABRIC FOR GROUND STABILIZATION	SQ YD	20,491
21101505	TOPSOIL EXCAVATION AND PLACEMENT	CU YD	1,584
* 25000110	SEEDING CLASS 1A	ACRE	4.4
* 25000210	SEEDING CLASS 2A	ACRE	1.1
* 25000400	NITROGEN FERTILIZER NUTRIENT	POUND	496
* 25000500	PHOSPHORUS FERTILIZER NUTRIENT	POUND	496
* 25000600	POTASSIUM FERTILIZER NUTRIENT	POUND	496
* 25100125	MULCH, METHOD 3	ACRE	5.5
* 25100630	EROSION CONTROL BLANKET	SQ YD	2,732
* 25100900	TURF REINFORCEMENT MAT	SQ YD	206
28000250	TEMPORARY EROSION CONTROL SEEDING	POUND	550
28000400	PERIMETER EROSION BARRIER	FOOT	9,370
28000500	INLET AND PIPE PROTECTION	EACH	8
28000510	INLET FILTERS	EACH	35
28100107	STONE RIPRAP, CLASS A4	SQ YD	228
28100109	STONE RIPRAP, CLASS A5	SQ YD	444
28200200	FILTER FABRIC	SQ YD	730
28300400	AGGREGATE DITCH	TON	25
35101800	AGGREGATE BASE COURSE, TYPE B 6"	SQ YD	21,023
40200500	AGGREGATE SURFACE COURSE, TYPE A 6"	SQ YD	71
40200700	AGGREGATE SURFACE COURSE, TYPE A 8"	SQ YD	159
40201000	AGGREGATE FOR TEMPORARY ACCESS	TON	1,061
40600295	POLYMERIZED BITUMINOUS MATERIALS (TACK COAT)	POUND	135

Pay Item	Description	Unit	Quantity
40600982	HOT-MIX ASPHALT SURFACE REMOVAL - BUTT JOINT	SQ YD	187
40604050	HOT-MIX ASPHALT SURFACE COURSE, IL-9.5, MIX "C", N50	TON	22
42000201	PORTLAND CEMENT CONCRETE PAVEMENT 7" (JOINTED)	SQ YD	1,868
42000301	PORTLAND CEMENT CONCRETE PAVEMENT 8" (JOINTED)	SQ YD	15,647
42300200	PORTLAND CEMENT CONCRETE DRIVEWAY PAVEMENT, 6 INCH	SQ YD	237
42300300	PORTLAND CEMENT CONCRETE DRIVEWAY PAVEMENT, 7 INCH	SQ YD	364
42400100	PORTLAND CEMENT CONCRETE SIDEWALK 4 INCH	SQ FT	2,874
42400200	PORTLAND CEMENT CONCRETE SIDEWALK 5 INCH	SQ FT	22,588
44000100	PAVEMENT REMOVAL	SQ YD	12,588
44000200	DRIVEWAY PAVEMENT REMOVAL	SQ YD	2,217
44000500	COMBINATION CURB AND GUTTER REMOVAL	FOOT	911
44000600	SIDEWALK REMOVAL	SQ FT	1,497
48100500	AGGREGATE SHOULDERS, TYPE A 6"	SQ YD	234
50105220	PIPE CULVERT REMOVAL	FOOT	649
50800105	REINFORCEMENT BARS	POUND	54
50800205	REINFORCEMENT BARS, EPOXY COATED	POUND	250
* 50901760	PIPE HANDRAIL	FOOT	52
52200800	SEGMENTAL CONCRETE BLOCK WALL	SQ FT	460
54213447	END SECTIONS 12"	EACH	1
54213477	END SECTIONS 42"	EACH	2
54213483	END SECTIONS 48"	EACH	1
54214317	END SECTIONS, EQUIVALENT ROUND-SIZE 42"	EACH	2
54244405	FLUSH INLET BOX FOR MEDIAN STANDARD 542546	EACH	1
54248510	CONCRETE COLLAR	CU YD	0.9
54262715	METAL FLARED END SECTIONS 15"	EACH	2
542A5497	PIPE CULVERTS, CLASS A, TYPE 1 EQUIVALENT ROUND-SIZE 42"	FOOT	68
542D0220	PIPE CULVERTS, CLASS D, TYPE 1 15"	FOOT	56
550B0050	STORM SEWERS, CLASS B, TYPE 1 12"	FOOT	460

* SPECIALTY ITEMS

Thursday, November 2, 2023 11:50:41 AM
 G:\2019\19000882\01\DESIGN\CIVIL\CSD\PLT\19000882_01--SCHEDULE-PLT.DWG



USER NAME = TAB	DESIGNED -- LRR/MJC	REVISED -- 09-06-2023
	DRAWN -- TAB	REVISED -- -01/05/2024
PLOT SCALE =	CHECKED -- LRR	REVISED -- -
PLOT DATE = 09-06-2023	DATE -- 01/11/2023	REVISED -- -

STATE OF ILLINOIS
 DEPARTMENT OF TRANSPORTATION

SUMMARY OF QUANTITIES
 JOHNSON STREET RECONSTRUCTION

F.A.U. RTE.	SECTION	COUNTY	TOTAL SHEETS	SHEET NO.
6926	19-00155-00-PV	McDONOUGH	104	4
JOHNSON ST & GRANT ST		CONTRACT NO. 89809		
ILLINOIS		PROJECT NO. 115C1152		

SCALE: SHEET NO. 4 OF 104 SHEETS

PC CONCRETE SIDEWALK SCHEDULE						
			42400100	42400200	X4240450	X4240800
STATION			4"	5"	7" SPL	DET WARNING SPECIAL
FROM	TO	LT / RT	SQ FT	SQ FT	SQ FT	SQ FT
JOHNSON STREET						
402+51	402+65	RT		109		
402+65	402+75	RT			81	
402+71		RT				16
403+15	403+36	RT			144	
403+22		RT				30
403+36	404+65	RT		1,054		
404+65	404+78	RT			99	
404+72		RT				16
405+30	405+43	RT			99	
405+38		RT				19
405+44	407+91	RT		1,979		
407+78	407+88	RT		95		
407+91	408+02	RT			83	
497+96		RT				16
408+53	408+67	RT			98	
408+58		RT				18
408+67	409+28	RT		475		
409+43	413+77	RT		3,457		
413+77	413+89	RT			88	
413+85		RT				16
414+34	414+49	RT			105	
414+39		RT				20
414+49	419+26	RT		3,812		
419+26	419+38	RT			88	
419+33		RT				16
419+82	419+97	RT			105	
419+88		RT				20
419+97	420+71	RT		590		
420+95	428+22	RT		5,822		
428+22	428+33	RT			88	
428+29		RT				16
428+79	428+94	RT			105	
428+84		RT				20
428+94	431+85	RT		2,612		
431+85	432+04	RT			42	
432+03		RT				16
432+55	432+71	LT			39	
432+62		LT				16
432+71	433+00	LT	309			
432+72	432+84	RT	309		57	
432+74		RT	309		57	16
GRANT STREET						
87+50	87+71	LT		194		
88+28	90+62	LT		2,195		
92+63	92+78	RT			83	
92+74		RT				13
93+21	93+36	RT			75	
93+27		RT				14
93+50	93+50	RT		82		
91+65	92+63	RT	496			
91+75	92+03	LT	162			
92+22	93+67	LT	739			
92+88	92+88	LT	15			
93+36	94+22	RT	499			
93+50		RT	36	112		
TOTALS			2,874	22,588	1,536	298

LOCATION	DRIVEWAY SCHEDULE					
	40200500	40200700	42300200	42300300	X4230720	35101800
	AGGREGATE SURFACE COURSE, TYA, 6"	AGGREGATE SURFACE COURSE, TYA 8"	PCC DRIVEWAY PAVEMENT, 6"	PCC DRIVEWAY PAVEMENT, 7"	PCC DRIVEWAY PAVEMENT 7" SPECIAL	AGGREGATE BASE COURSE, TYB, 6"
	SQ YD	SQ YD	SQ YD	SQ YD	SQ YD	SQ YD
JOHNSON STREET						
400+64 RT.		74				
409+35 RT		20		39		
416+31 LT			23			
417+75 LT			24			
419+16 LT			30			
419+70 LT			26			
420+83 RT				90		
421+32	31		45			
422+14 LT			25			
423+21 LT	12		14			
423+47 LT		39				
423+49 LT				33		
424+16 LT		3		42		
424+17 LT		3				
425+18 LT	28		16			
430+09 LT					168	
GRANT STREET						
87+84 RT		20		40		
87+99 LT				120		
88+75 RT					486	532
92+13 LT			34			
TOTALS	71	159	237	364	654	532

44000200		
DRIVEWAY PAVEMENT REMOVAL		
STATION	LT / RT	SQ YD
JOHNSON STREET		
409+33	RT	14.1
414+13	RT	343.5
416+31	LT	29.1
417+75	LT	35.5
419+16	LT	34.5
419+61	RT	283.2
419+70	LT	32.6
420+83	RT	91.9
421+32	LT	42.2
422+14	LT	32.3
423+38	LT	72.6
428+58	RT	255.9
430+12	LT	166.4
GRANT STREET		
87+97	LT	146.7
89+20	RT	460.8
92+16	LT	20.9
93+05	RT	154.3
TOTAL		2216.5

X4404700		
SIDEWALK REMOVAL (SPECIAL)		
LOCATION		SQ FT
JOHNSON / GRANT INTERSECTION		
431+38.1	RT	108
GRANT STREET		
93+53.5	RT	153
TOTAL		261

44000600			
SIDEWALK REMOVAL			
STATION			
FROM	TO	LT / RT	SQ FT
JOHNSON / GRANT INTERSECTION			
433+46 (J)	93+66 (G)	LT	631
432+36	433+00	LT	248
GRANT STREET			
92+00		LT	39
93+24	94+21	RT	494
93+53	95+53	RT	85
TOTAL			1497

44000500			
CURB & GUTTER REMOVAL			
STATION			
FROM	TO	LT / RT	FOOT
JOHNSON STREET			
431+62	431+66	LT	31
432+36	433+46	LT	126
JOHNSON / GRANT INTERSECTION			
421+63 (J)	92+70 (G)	RT	173
433+46 (J)	93+66 (G)	LT	370
GRANT STREET			
92+70	92+83	RT	60
93+08	93+34	RT	64
93+34	94+21	RT	87
TOTAL			911

40201000				
AGGREGATE FOR TEMPORARY ACCESS				
STATION				
FROM	TO	LT / RT	DEPTH	TONS
JOHNSON STREET				
414+00	429+80	LT	8"	250
417+30	419+29	RT	6"	55
421+00	425+50	RT	6"	131
Driveways			6"	425
Storm Sewers			12"	200
TOTAL				1,061

COMBINATION CONCRETE CURB & GUTTER				
			60605000	60600095
STATION			B6.24	CLASS SI CONCRETE (OUTLET)
FROM	TO	LT / RT	FOOT	CU YD
JOHNSON STREET				
402+50	402+87	LT	64	
402+50	402+76	RT	32	
403+16	414+96	LT	1,225	
403+09	404+80	RT	213	
405+26	408+07	RT	315	
408+48	413+98	RT	626	
414+27	419+46	RT	660	
415+25	431+89	LT	1,699	
419+76	428+42	RT	969	
428+72 (J)	91+78 (G)	RT	422	
432+40	433+46	LT	136	
432+66	433+46	RT	99	
GRANT STREET				
85+89	86+24	RT		2.9
86+24	90+42	RT	423	
87+11	87+50	LT		2.9
87+50	90+45	LT	294	
91+78	94+22	LT	247	
91+78	92+81	RT	139	
93+10	94+22	RT	137	
TOTALS			7,700	5.8

44000100		
PAVEMENT REMOVAL		
FROM	TO	SQ YD
JOHNSON STREET		
400+50	407+00	1,659
407+00	414+75	1,954
414+75	423+75	2,306
423+75	431+52.70	2,195
431+52.70	433+70	1,346
GRANT STREET		
86+00	90+45.84	1,445
91+75.91	94+21.76	1,041
HARMONY LANE		
402+92	66' RT	214
403+02	57' LT	222
WEAR AVENUE		
415+11	95' LT	206
TOTAL		12,588



USER NAME = TAB
PLOT SCALE =
PLOT DATE = 09-06-2023

DESIGNED -- LRR/MJC
DRAWN -- TAB
CHECKED -- LRR
DATE -- 01/11/2023

REVISED -- 09-06-2023
REVISED -- 01-05-2024
REVISED --
REVISED --

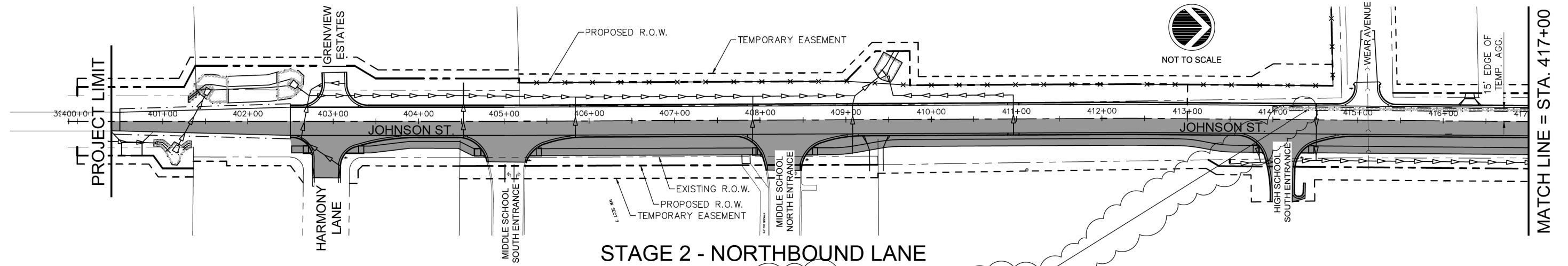
STATE OF ILLINOIS
DEPARTMENT OF TRANSPORTATION

SCHEDULES OF QUANTITIES
JOHNSON STREET RECONSTRUCTION

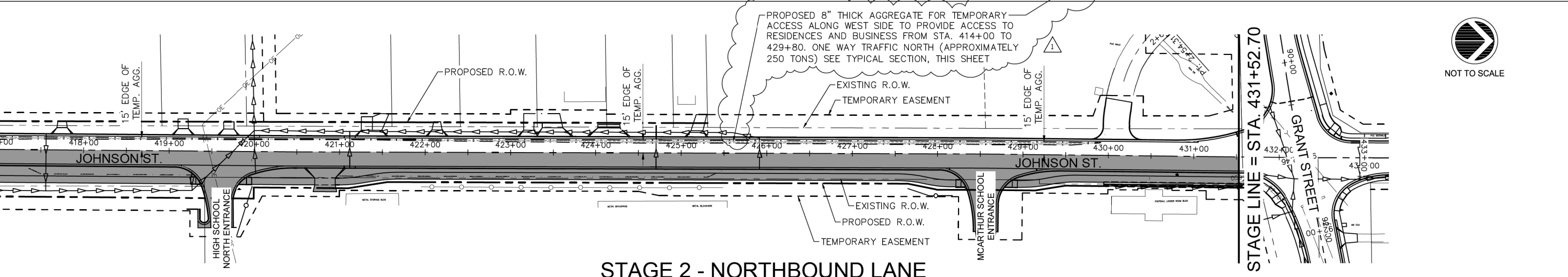
SCALE: SHEET NO. 8 OF 104 SHEETS

F.A.U. RTE.	SECTION	COUNTY	TOTAL SHEETS	SHEET NO.
6926	19-00155-00-PV	MCDONOUGH	104	8
JOHNSON ST & GRANT ST			CONTRACT NO. 89809	
ILLINOIS PROJECT NO. 115C1152				

F:\pdx_january_5_2024_11:37:41 AM
G:\2019\19000832.D1\DESIGN\DWG\C30\PL0T\19000832.01-SCHEDULE-PL0T.DWG



STAGE 2 - NORTHBOUND LANE



STAGE 2 - NORTHBOUND LANE

**ROADWAY - STAGE 2
STATION 400+50 to 431+52.70**

CONSTRUCTION

- STORM SEWERS WILL HAVE BEEN CONSTRUCTED DURING STAGE 1.
- CONTRACTOR TO GRADE/FILL EXISTING SHOULDER AND INSTALL AGGREGATE FOR TEMPORARY ACCESS TO MAINTAIN A MINIMUM OF 10-FT TRAVEL LANE FROM STA 414+00 TO STA 429+80 PRIOR TO STAGE 2 PAVEMENT REMOVAL IN THIS AREA. SEE TYPICAL SECTION ON THIS SHEET.
- REMOVE PAVEMENT, CURB AND GUTTERS, ENTRANCES TO HARMONY LANE, THE MIDDLE SCHOOL, THE HIGH SCHOOL, AND MCARTHUR SCHOOL.
- PERFORM EARTHWORK.
- CONSTRUCT CURB AND GUTTER AND PAVEMENT.
- CONSTRUCT ENTRANCES TO HARMONY LANE, THE MIDDLE SCHOOL, THE HIGH SCHOOL, AND MCARTHUR SCHOOL..
- SHARED USE PATH AND ASSOCIATED ITEMS MAY BE CONSTRUCTED NOW OR IN LATER STAGES.
- ROADWAY CONSTRUCTION SHALL BE GIVEN PRIORITY OVER SHARED USE PATH CONSTRUCTION.

**ROADWAY - STAGE 2
STATION 400+50 to 431+52.70**

TRAFFIC

- 1-LANE, 1-WAY TRAFFIC ON JOHNSON STREET SHALL BE MAINTAINED DURING STAGE 2 AND STAGE 3. CONTRACTOR MAY REQUEST PRIOR TO THE START OF CONSTRUCTION, FULL CLOSURE ON JOHNSON ST FROM STA 403+25 TO STA 414+00 IF SCHOOL IS NOT IN SESSION OR AFTER MAY 24TH, 2024.
- TRAFFIC SHALL BE NORTHBOUND ONLY AND SHALL TRAVEL UPON THE EXISTING SOUTHBOUND LANE.
- ACCESS TO THE HOUSES ON THE WEST SIDE OF JOHNSON STREET WILL BE FROM THE SOUTH ON JOHNSON.
- ACCESS TO WEAR AVENUE WILL BE FROM THE SOUTH ON JOHNSON.
- ACCESS TO GREENVIEW ESTATES WILL BE FROM THE SOUTH ON JOHNSON.
- ACCESS TO HARMONY LANE WILL BE FROM MAPLE AVENUE.
- ACCESS TO THE MIDDLE SCHOOL AND HIGH SCHOOL WILL BE FROM MAPLE AVENUE.
- ACCESS TO MCARTHUR SCHOOL WILL BE FROM GRANT STREET. THE ENTRANCE OFF GRANT STREET WILL NEED TO BE TEMPORARILY SIGNED AS TWO-WAY TRAFFIC DURING THIS STAGE SINCE THE ENTRANCE TO JOHNSON STREET WILL BE CONSTRUCTED DURING THIS STAGE.
- COORDINATE WITH THE SCHOOL DISTRICT FOR STAGE 2 AND STAGE 3 TRAFFIC PATTERNS.
- USE FLAGGERS AS NECESSARY AS NEEDED.

DETOUR SIGNAGE - STAGE 2

CHINA ROAD / JOHNSON STREET (EAST BOUND)

- "JOHNSON STREET NORTHBOUND TRAFFIC ONLY HARMONY TO GRANT"
- "MCARTHUR SCHOOL, HIGH SCHOOL, MIDDLE SCHOOL" (RIGHT TURN ARROW)

ROAD 1050 NORTH / JOHNSON STREET (NORTH BOUND)

- "JOHNSON STREET NORTHBOUND TRAFFIC ONLY HARMONY TO GRANT"
- "MCARTHUR SCHOOL, HIGH SCHOOL, MIDDLE SCHOOL" (RIGHT TURN ARROW)

ROAD 1050 NORTH / JOHNSON STREET (SOUTH BOUND)

- "MCARTHUR SCHOOL, HIGH SCHOOL, MIDDLE SCHOOL" (LEFT TURN ARROW)

ROAD 1050 NORTH / MAPLE AVENUE (EAST BOUND)

- "MCARTHUR SCHOOL, HIGH SCHOOL, MIDDLE SCHOOL" (LEFT TURN ARROW)

ROAD 1050 NORTH / MAPLE AVENUE (WEST BOUND)

- "JOHNSON STREET NORTHBOUND TRAFFIC ONLY HARMONY TO GRANT"
- "MCARTHUR SCHOOL, HIGH SCHOOL, MIDDLE SCHOOL" (RIGHT TURN ARROW)

ROAD 1050 NORTH / MAPLE AVENUE (SOUTH BOUND)

- "JOHNSON STREET NORTHBOUND TRAFFIC ONLY HARMONY TO GRANT"
- "SOUTH JOHNSON STREET" (RIGHT TURN ARROW)

GRANT STREET / MAPLE AVENUE (EAST BOUND)

- "SOUTH JOHNSON STREET" (RIGHT TURN ARROW)
- "MCARTHUR SCHOOL, HIGH SCHOOL, MIDDLE SCHOOL" (RIGHT TURN ARROW)

GRANT STREET / MAPLE AVENUE (WEST BOUND)

- "JOHNSON STREET NORTHBOUND TRAFFIC ONLY HARMONY TO GRANT"
- "SOUTH JOHNSON STREET" (LEFT TURN ARROW)
- "MCARTHUR SCHOOL, HIGH SCHOOL, MIDDLE SCHOOL" (LEFT TURN ARROW)

GRANT STREET / RANDOLPH STREET (SOUTHBOUND)

- "JOHNSON STREET NORTHBOUND TRAFFIC ONLY HARMONY TO GRANT"
- "SOUTH JOHNSON STREET" (AHEAD ARROW)
- "MCARTHUR SCHOOL, HIGH SCHOOL, MIDDLE SCHOOL" (AHEAD ARROW)

GRANT STREET / JOHNSON (WESTBOUND)

- "JOHNSON STREET NORTHBOUND TRAFFIC ONLY HARMONY TO GRANT"
- "MCARTHUR SCHOOL, HIGH SCHOOL, MIDDLE SCHOOL USE MAPLE AVENUE"

GRANT STREET / JOHNSON (SOUTHBOUND)

- "JOHNSON STREET NORTHBOUND TRAFFIC ONLY HARMONY TO GRANT"
- "MCARTHUR SCHOOL, HIGH SCHOOL, MIDDLE SCHOOL USE MAPLE AVENUE"

GRANT STREET / JOHNSON (SOUTHBOUND) SOUTH SIDE OF INTERSECTION

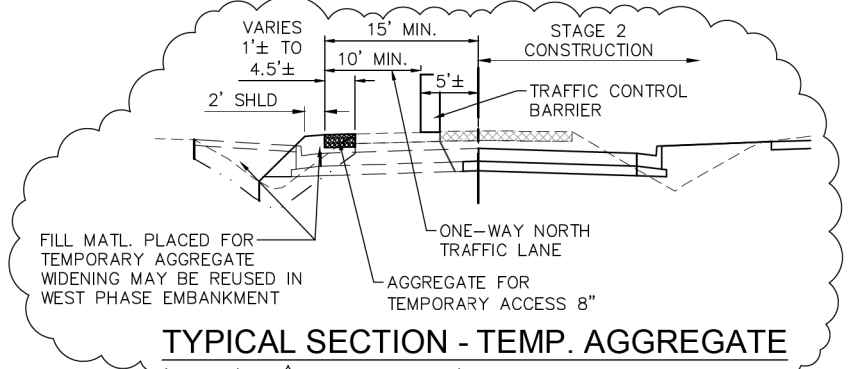
- "DO NOT ENTER, ONE WAY TRAFFIC"

GRANT STREET / JOHNSON (EASTBOUND)

- "JOHNSON STREET NORTHBOUND TRAFFIC ONLY HARMONY TO GRANT"
- "MCARTHUR SCHOOL, HIGH SCHOOL, MIDDLE SCHOOL USE MAPLE AVENUE"

TRAFFIC CONTROL AND PROTECTION:

- REFER TO IDOT TRAFFIC CONTROL STANDARDS: 701001-02, 701006-05, 701301-04, 701501-06, 701901-09, BLR 21-9, BLR 22-7.
- ERECT SIGNAGE AS PER THE MUTCD INCLUDING, BUT NOT LIMITED TO "ROAD WORK AHEAD", "ROAD CLOSED AHEAD", "ROAD CLOSED 500 FT", ETC.
- NOT ALL SIGNAGE REQUIRED IS SHOWN ON THESE PLANS. IT IS THE RESPONSIBILITY OF THE CONTRACTOR TO ENSURE THAT SIGNAGE IS PROPERLY INSTALLED.



TYPICAL SECTION - TEMP. AGGREGATE

Friday, January 5, 2024 11:13:10 AM G:\2019\19000892\01\DESIGN\CIVIL\330\PLT\19000892_01-TRAF CONT PLOT.DWG



USER NAME = TAB	DESIGNED -- LRR/MJC	REVISED -- 09-06-2023
PLOT SCALE =	DRAWN -- TAB	REVISED -- 01-05-2024
PLOT DATE = 09-06-2023	CHECKED -- LRR	REVISED --
	DATE -- 01/11/2023	REVISED --

**STATE OF ILLINOIS
DEPARTMENT OF TRANSPORTATION**

**STAGING PLAN - STAGE 2
JOHNSON STREET RECONSTRUCTION**

F.A.U. RTE.	SECTION	COUNTY	TOTAL SHEETS	SHEET NO.
6926	19-00155-00-PV	McDONOUGH	104	33
JOHNSON ST & GRANT ST		CONTRACT NO. 89809		
ILLINOIS PROJECT NO. 115C0152				

SCALE: SHEET NO. 33 OF 104 SHEETS