

INDEX OF SHEETS

1	COVER SHEET
2	INDEX OF SHEETS AND STATE STANDARDS
3	GENERAL NOTES
4 - 12	SUMMARY OF QUANTITIES
13	TYPICAL SECTIONS
14 - 16	SCHEDULE OF QUANTITIES
17	ALIGNMENT, TIES AND BENCHMARKS
18 - 20	ROADWAY REMOVAL PLAN
21 - 25	ROADWAY PLAN AND PROFILE
26	SUGGESTED MAINTENANCE OF TRAFFIC PLAN - GENERAL NOTES & TYPICAL SECTIONS
27	SUGGESTED MAINTENANCE OF TRAFFIC PLAN - SEQUENCE OF CONSTRUCTION
28 - 30	SUGGESTED MAINTENANCE OF TRAFFIC - STAGE 1
31 - 33	SUGGESTED MAINTENANCE OF TRAFFIC - STAGE 2
34 - 36	SUGGESTED MAINTENANCE OF TRAFFIC - STAGE 3
37 - 41	EROSION CONTROL AND LANDSCAPE PLAN
42 - 44	DRAINAGE REMOVAL AND UTILITY ADJUSTMENT PLAN
45	DRAINAGE REMOVAL AND UTILITY ADJUSTMENT SCHEDULE
46 - 50	DRAINAGE AND UTILITY PLAN AND PROFILE
51 - 55	DRAINAGE PIPE AND STRUCTURE SCHEDULES
56 - 58	PAVEMENT MARKING AND SIGNING PLAN
59	WATER MAIN NOTES
60 - 64	WATER MAIN PLAN AND PROFILE
65 - 66	WATER MAIN DETAILS
67 - 78	LIGHTING PLANS
79 - 82	SIDEWALK RAMP DETAILS
83 - 96	STRUCTURE PLANS
97 - 109	IDOT DISTRICT 1 DETAILS
110 - 133	CROSS SECTIONS - IL ROUTE 19

DISTRICT ONE DETAILS

DISTRICT ONE DETAILS	LIST OF DESCRIPTION
STANDARD NO.	
BD01	DRIVEWAY DETAILS-DISTANCE BETWEEN R.O.W. AND FACE OF CURB & EDGE OF SHOULDER ≥ TO 15 FT
BD02	DRIVEWAY DETAILS-DISTANCE BETWEEN R.O.W. AND FACE OF CURB & EDGE OF SHOULDER < TO 15 FT
BD07	DETAIL OF STORM SEWER CONNECTION TO EXISTING STORM SEWER
BD12	MANHOLE WITH RESTRICTOR PLATE
BD36	FIRE HYDRANT TO BE MOVED
BD51	BENCHING DETAIL FOR EMBANKMENT WIDENING
TC10	TRAFFIC CONTROL AND PROTECTION FOR SIDE ROADS, INTERSECTIONS AND DRIVEWAYS
TC11	TYPICAL APPLICATIONS RAISED REFLECTIVE PAVEMENT MARKERS (SNOW PLOW RESISTANT)
TC13	DISTRICT ONE TYPICAL PAVEMENT MARKINGS
TC14	TRAFFIC CONTROL AND PROTECTION AT TURN BAYS (TO REMAIN OPEN TO TRAFFIC)
TC16	PAVEMENT MARKING LETTERS AND SYMBOLS FOR TRAFFIC STAGING
TC22	ARTERIAL ROAD INFORMATION SIGN
TC26	DRIVEWAY ENTRANCE SIGNING

STATE STANDARDS

STANDARD NO.	LIST OF DESCRIPTION
000001-08	STANDARD SYMBOLS, ABBREVIATIONS AND PATTERNS
280001-07	TEMPORARY EROSION CONTROL SYSTEMS
424001-11	PERPENDICULAR CURB RAMPS FOR SIDEWALKS
424021-06	DEPRESSED CURB FOR SIDEWALKS
542301-03	PRECAST REINFORCED CONCRETE FLARED END SECTION
542311-07	TRAVERSABLE PIPE GRATE FOR CONCRETE END SECTION
601001-05	PIPE UNDERDRAINS
602001-02	CATCH BASIN, TYPE A
602011-02	CATCH BASIN, TYPE C
602301-04	INLET, TYPE A
602401-07	PRECAST MANHOLE, TYPE A 4' DIAMETER
602402-03	PRECAST MANHOLE, TYPE A 5' DIAMETER
602406-11	PRECAST MANHOLE, TYPE A 6' DIAMETER
602411-09	PRECAST MANHOLE, TYPE A 7' DIAMETER
602416-09	PRECAST MANHOLE, TYPE A 8' DIAMETER
602601-06	PRECAST REINFORCED CONCRETE FLAT SLAB TOP
602701-02	MANHOLE STEPS
604001-05	FRAME AND LIDS, TYPE 1
604036-03	GRATE TYPE 8
604091-05	FRAME AND GRATE TYPE 24
606001-08	CONCRETE CURB TYPE B AND COMBINATION CONCRETE CURB AND GUTTER
701006-05	OFF-RD OPERATIONS, 2L, 2W, 15' (4.5M) TO 24" (600 MM) FROM PAVEMENT EDGE
701011-04	OFF-RD MOVING OPERATIONS, 2L, 2W, DAY ONLY
701101-05	OFF-RD OPERATIONS, MULTILANE, 15' TO 24" FROM PAVEMENT EDGE
701106-02	OFF-RD OPERATIONS, MULTILANE, MORE THAN 15' AWAY
701301-04	LANE CLOSURE, 2L, 2W, SHORT TIME OPERATIONS
701311-03	LANE CLOSURE 2L, 2W MOVING OPERATIONS- DAY ONLY
701426-09	LANE CLOSURE, MULTILANE, INTERMITTENT OR MOVING OPER., FOR SPEEDS ≥ 45 MPH
701427-05	LANE CLOSURE, MULTILANE, INTERMITTENT OR MOVING OPER., FOR SPEEDS < 40 MPH
701501-06	URBAN LANE CLOSURE, 2L, 2W, UNDIVIDED
701502-09	URBAN LANE CLOSURE, 2L, 2W, WITH BIDIRECTIONAL LEFT TURN LANE
701602-10	URBAN LANE CLOSURE, MULTILANE, 2W WITH BIDIRECTIONAL LEFT TURN LANE
701611-01	URBAN HALF ROAD CLOSURE, MULTILANE, 2W WITH MOUNTABLE MEDIAN
701701-10	URBAN LANE CLOSURE, MULTILANE INTERSECTION
701801-06	SIDEWALK, CORNER OR CROSSWALK CLOSURE
701901-09	TRAFFIC CONTROL DEVICES
720001-01	SIGN PANEL MOUNTING DETAILS
720006-04	SIGN PANEL ERECTION DETAILS
720011-01	METAL POSTS FOR SIGNS, MARKERS, AND DELINEATORS
728001-01	TELESCOPING STEEL SIGN SUPPORT
729001-01	APPLICATION OF TYPE A AND B METAL POSTS (FOR SIGNS AND MARKERS)
731001-01	BASE FOR TELESCOPING STEEL SIGN SUPPORT
780001-05	TYPICAL PAVEMENT MARKINGS
781001-04	TYPICAL APPLICATIONS RAISED REFLECTIVE PAVEMENT MARKINGS
782006-01	GUARDRAIL AND BARRIER WALL REFLECTOR MOUNTING DETAILS
805001-01	ELECTRICAL SERVICE INSTALLATION DETAILS
836001-04	LIGHT POLE FOUNDATION

HRG PROJECT NO.: 20045
 HRG PROJ. CONTACT:
 FILE NAME: 20045-spr-pem01.dgn
 PEN TABLE: 1/10/2024.tbl



USER NAME = jhorwit	DESIGNED -	REVISED - 12/15/2023
DRAWN - WJH	CHECKED - TEH	REVISED -
PLOT SCALE = 2,0000' / in.	DATE -	REVISED -
PLOT DATE = 1/4/2024		

**STATE OF ILLINOIS
DEPARTMENT OF TRANSPORTATION**

**INDEX OF SHEETS, STATE STANDARDS & DISTRICT 1 DETAILS
IL RTE 19 (IRVING PARK RD)**

SCALE: N.T.S. SHEET 1 OF 1 SHEETS STA. TO STA.

F.A. RTE.	SECTION	COUNTY	TOTAL SHEETS	SHEET NO.
1321	10-00055-02-WR	COOK	133	2
CONTRACT NO. 61K06			ILLINOIS FED. AID PROJECT	

PAYCODE	ITEM DESCRIPTION	UNIT	TOTAL	CONSTRUCTION CODE			
				ROADWAY 80% FEDERAL 20% STATE 0004	LIGHTING 75% STATE ITEP 25% LOCAL 0021	100% LOCAL 004	MULTI-USE PATH 90% STATE ITEP 10% STATE 0028
60108204	PIPE UNDERDRAINS, TYPE 2, 4"	FOOT	904	904			
60146304	PIPE UNDERDRAINS FOR STRUCTURES 4"	FOOT	2,997				2,997
60200205	CATCH BASINS, TYPE A, 4'-DIAMETER, TYPE 1 FRAME, CLOSED LID	EACH	4	4	⚠		
60200805	CATCH BASINS, TYPE A, 4'-DIAMETER, TYPE 8 GRATE	EACH	5	5	⚠		
60201340	CATCH BASINS, TYPE A, 4'-DIAMETER, TYPE 24 FRAME AND GRATE	EACH	23	23			
60204505	CATCH BASINS, TYPE A, 5'-DIAMETER, TYPE 8 GRATE	EACH	2	2			
60207605	CATCH BASINS, TYPE C, TYPE 8 GRATE	EACH	8	8			
60208240	CATCH BASINS, TYPE C, TYPE 24 FRAME AND GRATE	EACH	15	15			
60218400	MANHOLES, TYPE A, 4'-DIAMETER, TYPE 1 FRAME, CLOSED LID	EACH	13	13			
60221100	MANHOLES, TYPE A, 5'-DIAMETER, TYPE 1 FRAME, CLOSED LID	EACH	7	7			
60223800	MANHOLES, TYPE A, 6'-DIAMETER, TYPE 1 FRAME, CLOSED LID	EACH	15	15			
60224446	MANHOLES, TYPE A, 7'-DIAMETER, TYPE 1 FRAME, CLOSED LID	EACH	1	1			
60224459	MANHOLES, TYPE A, 8'-DIAMETER, TYPE 1 FRAME, CLOSED LID	EACH	3	3			
60237470	INLETS, TYPE A, TYPE 24 FRAME AND GRATE	EACH	27	27			
60260100	INLETS TO BE ADJUSTED	EACH	1	1			
60265700	VALVE VAULTS TO BE ADJUSTED	EACH	7	7			
60500040	REMOVING MANHOLES	EACH	4	4			
60500050	REMOVING CATCH BASINS	EACH	10	10			

* SPECIALITY ITEMS

X CONSTRUCTION TYPE CODE 0042

HRG PROJECT NO: 200416
 HRG PROJ CONTACT:
 FILE: 10-00055-02-WR-100-01.dgn
 PLOT DATE: 1/8/2024
 PEN TABLE: p10.tbl



USER NAME = jhorwit	DESIGNED -	REVISED - ⚠ 12/15/2023
	DRAWN - WJH	REVISED - XX/XX/XXXX
PLOT SCALE = 2.0000' / in.	CHECKED - TEH	REVISED - XX/XX/XXXX
PLOT DATE = 1/8/2024	DATE -	REVISED - XX/XX/XXXX

STATE OF ILLINOIS
DEPARTMENT OF TRANSPORTATION

SUMMARY OF QUANTITIES
IL RTE 19 (IRVING PARK RD)

SCALE: N.T.S. SHEET 5 OF 9 SHEETS STA. TO STA.

F.A. RTE.	SECTION	COUNTY	TOTAL SHEETS	SHEET NO.
1321	10-00055-02-WR	COOK	133	8
			CONTRACT NO. 61K06	
[ILLINOIS] FED. AID PROJECT				

PAYCODE	ITEM DESCRIPTION	UNIT	TOTAL	CONSTRUCTION CODE			
				ROADWAY 80% FEDERAL 20% STATE 0004	LIGHTING 75% STATE ITEP 25% LOCAL 0021	100% LOCAL 004	MULTI-USE PATH 90% STATE ITEP 10% STATE 0028
6050060	REMOVING INLETS	EACH	5	5			
6060500	COMBINATION CONCRETE CURB AND GUTTER, TYPE B-6,24	FOOT	11,058	11,058			
* 6300001	STEEL PLATE BEAM GUARDRAIL, TYPE A, 6 FOOT POSTS	FOOT	1,250	1,250			
* 63100167	TRAFFIC BARRIER TERMINAL, TYPE 1 (SPECIAL) TANGENT	EACH	10	10			
63200310	GUARDRAIL REMOVAL	FOOT	805	805			
* 66900200	NON-SPECIAL WASTE DISPOSAL	CU YD	4,620	4,620			
* 66900530	SOIL DISPOSAL ANALYSIS	EACH	10	10			
* 66901001	REGULATED SUBSTANCES PRE-CONSTRUCTION PLAN	LSUM	1	1			
* 66901006	REGULATED SUBSTANCES MONITORING	CAL DA	80	80			
* 66901003	REGULATED SUBSTANCES FINAL CONSTRUCTION REPORT	LSUM	1	1			
* 66901004	HERBICIDES SOIL ANALYSIS	EACH	2	2			
67000400	ENGINEER'S FIELD OFFICE, TYPE A	CAL MO	12	12			
67100100	MOBILIZATION	L SUM	1	1			
70107025	CHANGEABLE MESSAGE SIGN	CAL DA	145	145			
70300100	SHORT TERM PAVEMENT MARKING	FOOT	5,800	5,800			
70300150	SHORT TERM PAVEMENT MARKING REMOVAL	SO FT	21,810	21,810			
70307120	TEMPORARY PAVEMENT MARKING - LINE 4" - TYPE IV TAPE	FOOT	57,494	57,494			
70307210	TEMPORARY PAVEMENT MARKING - LINE 24"- TYPE IV TAPE	FOOT	69	69			

* SPECIALITY ITEMS

x CONSTRUCTION TYPE CODE 0042

HRG PROJECT NO: 200415
 HRG PROJ. CONTACT:
 FILE NAME: 200415-sht-004-0.dgn
 PLOT DRIVER: L:\pdr\dwgplc17g
 PEN TABLE: p10r10b17d1



USER NAME = jhorwit	DESIGNED -	REVISED - 12/15/2023
	DRAWN - WJH	REVISED - XX/XX/XXXX
PLOT SCALE = 2.0000 1/ in.	CHECKED - TEH	REVISED - XX/XX/XXXX
PLOT DATE = 1/8/2024	DATE -	REVISED - XX/XX/XXXX

STATE OF ILLINOIS
 DEPARTMENT OF TRANSPORTATION

SUMMARY OF QUANTITIES
 IL RTE 19 (IRVING PARK RD)

SCALE: N.T.S. SHEET 6 OF 9 SHEETS STA. TO STA.

F.A. RTE.	SECTION	COUNTY	TOTAL SHEETS	SHEET NO.
1321	10-00055-02-WR	COOK	133	9
			CONTRACT NO. 61K06	
ILLINOIS FED. AID PROJECT				

HRG PROJECT NO: 200416
 HRG PROJ CONTACT:
 FILE: 10-00055-02-WR-100-01.dgn
 PEN: TABLE: 10-00055-02-WR-100-01.dgn
 PEN: TABLE: 10-00055-02-WR-100-01.dgn

PAYCODE	ITEM DESCRIPTION	UNIT	TOTAL	CONSTRUCTION CODE			
				ROADWAY 80% FEDERAL 20% STATE 0004	LIGHTING 75% STATE ITEP 25% LOCAL 0021	100% LOCAL 004	MULTI-USE PATH 90% STATE ITEP 10% STATE 0028
* X1400238	LUMINAIRE, LED, SPECIAL	EACH	66		66		
X2010400	STUMP REMOVAL ONLY	UNIT	19				19
* X2080252	TRENCH BACKFILL, WATERMAIN	CU YD	25	25			
* X2130010	EXPLORATION TRENCH (SPECIAL)	FOOT	100	100			
X4021000	TEMPORARY ACCESS (PRIVATE ENTRANCE)	EACH	14	14			
X4022000	TEMPORARY ACCESS (COMMERCIAL ENTRANCE)	EACH	2	2			
X4023000	TEMPORARY ACCESS (ROAD)	EACH	5	5			
X6020094	MANHOLES, TYPE A, 6'-DIAMETER, TYPE 1 FRAME, CLOSED LID, RESTRICTOR PLATE	EACH	2	2			
X6020298	MANHOLES, TYPE A, 8'-DIAMETER, TYPE 1 FRAME, CLOSED LID, RESTRICTOR PLATE	EACH	7	7			
X6026056	SANITARY MANHOLES TO BE ADJUSTED WITH NEW TYPE 1 FRAME, CLOSED LID	EACH	8	8			
X6026057	SANITARY MANHOLES TO BE RECONSTRUCTED WITH NEW TYPE 1 FRAME, CLOSED LID	EACH	2	2			
X7010216	TRAFFIC CONTROL AND PROTECTION, (SPECIAL)	L SUM	1	1			
X7010410	SPEED DISPLAY TRAILER	CAL MO	12	12			
* X8300001	LIGHT POLE (SPECIAL)	EACH	66		66		
Z0013798	CONSTRUCTION LAYOUT	L SUM	1	1			
Z0030850	TEMPORARY INFORMATION SIGNING	SO FT	146	146			
Z0062456	TEMPORARY PAVEMENT	SO YD	350	350			
Z0062458	TEMPORARY PAVEMENT (VARIABLE DEPTH)	TON	1	1			
X Z0076600	TRAINEES	HOUR	1,000	1,000			
X Z0076604	TRAINEES TRAINING PROGRAM GRADUATE	HOUR	1,000	1,000			

* SPECIALITY ITEMS

X CONSTRUCTION TYPE CODE 0042



USER NAME = jhorwit	DESIGNED -	REVISED - 12/15/2023
	DRAWN - WJH	REVISED - XX/XX/XXXX
PLOT SCALE = 2.0000' / in.	CHECKED - TEH	REVISED - XX/XX/XXXX
PLOT DATE = 1/8/2024	DATE -	REVISED - XX/XX/XXXX

STATE OF ILLINOIS
DEPARTMENT OF TRANSPORTATION

SUMMARY OF QUANTITIES
IL RTE 19 (IRVING PARK RD)

SCALE: N.T.S. SHEET 9 OF 9 SHEETS STA. TO STA.

F.A. RTE.	SECTION	COUNTY	TOTAL SHEETS	SHEET NO.
1321	10-00055-02-WR	COOK	133	12
CONTRACT NO. 61K06			ILLINOIS FED. AID PROJECT	

SUGGESTED MAINTENANCE OF TRAFFIC GENERAL NOTES

1. THE TRAFFIC CONTROL PLAN SHALL SERVE AS A GUIDE FOR SAFE DIVERSION OF TRAFFIC DURING EXECUTION OF THIS CONTRACT. HOWEVER, THE CONTRACTOR MAY IMPROVE OR MODIFY THE TRAFFIC CONTROL PLANS TO MEET CONSTRUCTION NEEDS BUT NOT AT THE EXPENSE OF PUBLIC SAFETY OR CONVENIENCE. ANY CHANGES TO THE TRAFFIC CONTROL PLAN SHALL BE SUBMITTED TO THE ENGINEER FOR APPROVAL.
2. THE CONTRACTOR SHALL CONTACT THE DISTRICT ONE TRAFFIC CONTROL SUPERVISOR AT KALPANA.KANNAN-HOSADURGA@ILLINOIS.GOV A MINIMUM OF 72 HOURS IN ADVANCE OF BEGINNING WORK.
3. ALL OF THE TRAFFIC CONTROL DEVICES SHALL BE IN PLACE BEFORE CONSTRUCTION IS STARTED. ALL TEMPORARY PAVEMENT MARKINGS & TRAFFIC CONTROL DEVICES SHALL BE IN PLACE AT THE BEGINNING OF EACH STAGE AND SHALL BE MAINTAINED FOR THE DURATION OF THAT STAGE UNLESS OTHERWISE DIRECTED BY THE ENGINEER.
4. A MINIMUM OF ONE (1) ELEVEN FOOT (11') LANE IN EACH DIRECTION SHALL BE KEPT OPEN TO TRAFFIC AT ALL TIMES.
5. THE CONTRACTOR SHALL PROVIDE INFORMATION SIGNS ON TEMPORARY SUPPORTS FOR THE COMMERCIAL DRIVEWAYS. THESE SIGNS SHALL BE WHITE ON GREEN IN ACCORDANCE WITH THE MANUAL OF UNIFORM TRAFFIC CONTROL DEVICES. THIS WORK WILL BE PAID FOR PER DISTRICT ONE DETAILED TC-26. THE CONTRACTOR SHALL BE REQUIRED TO MAINTAIN ACCESS TO ALL ENTRANCES, APPROACHES AND TEMPORARY ROADS WITHIN THE PROJECT LIMITS. THIS WORK WILL BE INCLUDED IN THE COST OF TEMPORARY ACCESS (PRIVATE ENTRANCE) OR TEMPORARY ACCESS (COMMERCIAL ENTRANCE).
6. A TEMPORARY HOT-MIX ASPHALT RAMP WEDGE TO TRANSITION THE DIFFERENTIAL ELEVATIONS CAUSED BY STAGED CONSTRUCTION SHALL BE INSTALLED BETWEEN THE NEW CONSTRUCTION AND THE EXISTING PAVEMENT. THE RAMP WEDGE WILL BE PAID FOR AS TEMPORARY PAVEMENT (VARIABLE DEPTH). ANY PAVEMENT DROP-OFFS GREATER THAN 3 INCHES IMMEDIATELY ADJACENT TO TRAFFIC SHALL NOT BE LEFT OVERNIGHT.
7. THE CONTRACTOR SHALL MAINTAIN TRAFFIC IN ACCORDANCE WITH THE PLANS, SPECIAL PROVISIONS, STATE STANDARDS AND AS DIRECTED BY THE ENGINEER.
8. THE CONTRACTOR SHALL INFORM THE ENGINEER OF ANY CHANGES IN STAGING AT LEAST TWO (2) WORKING DAYS IN ADVANCE.
9. TEMPORARY SIGNING, AS SHOWN, SHALL CONFORM THE APPLICABLE STANDARDS INCLUDED IN THE SPECIAL PROVISIONS AND CONTRACT PLANS OR AS DIRECTED BY THE ENGINEER.
10. ALL "ROAD CONSTRUCTION AHEAD" SIGNS SHALL BE EQUIPPED WITH MONO-DIRECTIONAL AMBER FLASHING LIGHTS.
11. ALL STATE ROUTE MARKERS SHALL BE MAINTAINED AT ALL TIMES THROUGHOUT ALL STAGES OF CONSTRUCTION.
12. EXISTING TRAFFIC CONTROL DEVICES WITHIN THE LIMITS OF CONSTRUCTION ARE TO BE PROTECTED FROM DAMAGE BY THE CONTRACTOR. ANY DAMAGED SIGNS CAUSED BY THIS WORK SHALL BE REPLACED BY THE CONTRACTOR.
13. TRAFFIC CONTROL DEPICTED ON THE MAINTENANCE OF TRAFFIC PLANS IS THE MINIMUM REQUIREMENT. OTHER WORK OR SIGNING MAY BE REQUIRED BY THE ENGINEER.
14. THE TYPE III BARRICADES ARE TO BE PLACED IN ACCORDANCE WITH STANDARD 701901 UNLESS AUTHORIZED BY THE ENGINEER TO USE AN ALTERNATIVE ARRANGEMENT.
15. TYPE 1, TYPE II OR DRUM BARRICADES WITH TWO-WAY FLASHING LIGHTS SHALL BE REQUIRED AT ALL OPEN TRENCHES, EXCAVATIONS, OPEN OR EXPOSED SEWER STRUCTURES, TRANSVERSE PAVEMENT JOINTS, MATERIALS OR EQUIPMENT WITHIN THE RIGHT-OF-WAY (NUMBER AND SPACING DEPENDS ON THE CONDITIONS); AND AT LOCATIONS DESIGNATED BY THE ENGINEER OR LOCAL LAW ENFORCEMENT AGENCIES.
16. THE CONTRACTOR SHALL PROVIDE, INSTALL, MAINTAIN AND REMOVE ALL SIGNS AND SIGN SUPPORTS REQUIRED FOR TRAFFIC CONTROL AND PROTECTION. THIS WORK SHALL NOT BE PAID FOR SEPARATELY BUT SHALL BE INCLUDED IN THE CONTRACT UNIT PRICE PER LUMP SUM FOR "TRAFFIC CONTROL AND PROTECTION (SPECIAL)".
17. ARROW BOARDS WILL BE REQUIRED WHEN IMPLEMENTING ALL LANE CLOSURES.
19. ANY SAW CUTTING OF THE EXISTING PAVEMENT FOR STAGE CONSTRUCTION SHALL BE INCLUDED IN THE CONTRACT UNIT PRICE PER SQUARE YARD FOR "PAVEMENT REMOVAL".
20. TRAFFIC CONDITIONS, ACCIDENTS, AND OTHER UNFORESEEN EMERGENCY CONDITIONS MAY REQUIRE THE ENGINEER TO RESTRICT, MODIFY, OR REMOVE LANE CLOSURES OR CHANNELIZATION SHOWN IN THE PLANS. THE CONTRACTOR SHALL MAKE THE NECESSARY ADJUSTMENTS AS DIRECTED BY THE ENGINEER WITHOUT DELAY. THE CONTRACTOR SHALL RESPOND TO ANY REQUEST MADE BY THE ENGINEER FOR CORRECTION WITHIN TWO HOURS FROM THE TIME OF NOTIFICATION.
21. WHEN ARTIFICIAL LIGHTING IS USED IN NIGHT OPERATIONS THE CONTRACTOR SHALL EXERCISE THE UTMOST PRECAUTIONS IN PREVENTING ADVERSE VISIBILITY TO THE MOTORING PUBLIC AND ADJOINING RESIDENTIAL AREAS.
22. A DETECTABLE PEDESTRIAN CHANNELIZING BARRICADE WITH A "SIDEWALK CLOSED" SIGN AFFIXED, SHALL BE PLACED ON ALL SIDEWALKS CLOSED DUE TO CONSTRUCTION ACTIVITIES AS SHOWN IN STDS. 701801 & 701901.
23. CHANGEABLE MESSAGE SIGNS SHALL BE INSTALLED TWO WEEKS PRIOR TO ALL TRAFFIC STAGE CHANGES ON EACH APPROACH OF THE EFFECTED ROADWAY TO WARN MOTORISTS OF THE UPCOMING EVENT. THE SIGNS SHALL BE REMOVED TWO WEEKS THEREAFTER UNLESS THE SIGNS ARE NEEDED AGAIN FOR A SUBSEQUENT FUTURE EVENT THAT WILL OCCUR WITHIN 2 WEEKS ON THE SAME APPROACH OF THE EFFECTED ROADWAY. THE SIGN LOCATIONS SHALL BE DETERMINED BY THE ENGINEER.
24. WORK SPEED ZONE SPEED LIMIT SIGNS SHALL BE LOCATED APPROXIMATELY 500' FROM THE START OF THE WORK ZONE.
25. CONTRACTOR SHALL REMOVE OR COVER ALL W21-1 (WORKERS PRESENT) AND W20-7 (FLAGGER) SIGNS WHEN WORKERS ARE NOT PRESENT OR IF THE SIGN IS NOT APPLICABLE.
26. DRUMS AND VERTICAL PANELS ALONG ARTERIAL ROADWAYS SHALL BE PLACED AS FOLLOWS: 50' C-C ALONG TANGENTS; 20' C-C ALONG TAPERS; & 10' C-C ALONG RADII/CURVES.
27. DROP-OFFS ADJACENT TO THE TRAVEL LANE SHALL BE KEPT TO A MINIMUM. PROTECTION OF THE DROP-OFF SHALL BE ACCORDING TO THE IDOT BUREAU OF SAFETY PROGRAMS AND ENGINEERING, SAFETY ENGINEERING POLICY MEMORANDUM 4-21. DROP-OFFS GREATER THAN OR EQUAL TO 12" AT LOCATIONS WHERE THE DROP-OFF IS LOCATED WITHIN 8 FT OF THE EDGE OF THE TRAVEL LANE SHALL BE BACKFILLED IN ACCORDANCE WITH TABLE 2, CONDITION II OF THE SAFETY 4-21 POLICY. THE CONTRACTOR SHALL BE RESPONSIBLE FOR ENSURING THAT THE DROP-OFF AREAS MEET THE OFFSET, HEIGHT, AND DURATION REQUIREMENTS TO USE BARRICADES AT THE END OF EACH WORKDAY. THIS MAY REQUIRE THE CONTRACTOR TO REPLACE OR PLACE SUFFICIENT MATERIAL IN THE EXCAVATION TO REDUCE THE DROP-OFF TO BE COMPLIANT WITH THE REQUIREMENTS FOR USE OF BARRICADES. NO ADDITIONAL COMPENSATION SHALL BE ALLOWED TO COMPLY WITH THIS REQUIREMENT.

HRG PROJECT NO: 20045
 HRG PROJ CONTACT:
 FILE NAME: 20045-spr+stage-gen-01.dgn
 PLOT DATE: 1/4/2024
 PEN TABLE: 100tbl.tbl



USER NAME = jhorwit	DESIGNED -	REVISED -	12/15/2023
	DRAWN - WJH	REVISED -	
PLOT SCALE = 20.0000 ' / in.	CHECKED - TEH	REVISED -	
PLOT DATE = 1/4/2024	DATE -	REVISED -	

STATE OF ILLINOIS
DEPARTMENT OF TRANSPORTATION

SUGGESTED MAINTENANCE OF TRAFFIC
GENERAL NOTES

SCALE: SHEET OF SHEETS STA. TO STA.

F.A. RTE.	SECTION	COUNTY	TOTAL SHEETS	SHEET NO.
1321	10-00055-02-WR	COOK	133	26
CONTRACT NO. 61K06				
ILLINOIS FED. AID PROJECT				

**SUGGESTED MAINTENANCE OF TRAFFIC AND CONSTRUCTION STAGING
SEQUENCE OF CONSTRUCTION**

PRE-STAGE - CONSTRUCTION (TO BEGIN NO SOONER THAN MARCH 1, 2024)

PRE-STAGE - SUGGESTED MAINTENANCE OF TRAFFIC
INSTALL ARTERIAL ROAD INFORMATION SIGNING PER DISTRICT 1 DETAIL TC-22 A MINIMUM OF TWO (2) WEEKS IN ADVANCE OF CONSTRUCTION.

STAGE 1 - CONSTRUCTION IL 19 (IRVING PARK ROAD)

CONSTRUCT WESTBOUND 8.5' OF THROUGH LANES, NORTH SHOULDER, AND NORTH CURB AND GUTTER OF IL 19 (IRVING PARK ROAD).

CONSTRUCT TEMPORARY PAVEMENT AT DRIVEWAYS FOR STAGES 2 AND 3 AS SHOWN ON THE PLANS.

CONSTRUCT NORTH RETAINING WALLS ALONG IL 19 (IRVING PARK ROAD).

PERFORM STORM SEWER INSTALLATION.

PERFORM WATER MAIN CONSTRUCTION.

STAGE 1 - SUGGESTED MAINTENANCE OF TRAFFIC

INSTALL LANE CLOSURE ADVANCE SIGNING ACCORDING TO THE PLANS.

COVER AND REMOVE PERMANENT SIGNS AS NEEDED FOR STAGE 1 CONSTRUCTION.

REMOVE ALL CONFLICTING RAISED REFLECTIVE PAVEMENT MARKERS WITHIN THE PROJECT LIMITS.

REMOVAL ALL CONFLICTING PAVEMENT MARKINGS ALONG IL 19 (IRVING PARK ROAD) AND INSTALL TEMPORARY PAVEMENT MARKINGS AND TRAFFIC CONTROL FOR LANE DROPS PER THE MOT PLAN SHEETS.

INSTALL ALL TEMPORARY PAVEMENT MARKING AND TEMPORARY TRAFFIC CONTROL DEVICES FOR STAGE 1 CONSTRUCTION, SHIFT TRAFFIC.

STAGE 2 - CONSTRUCTION OF IL 19 (IRVING PARK ROAD)

CONSTRUCT REMAINING 9.5' OF THE NORTH PAVEMENT UP TO THE CENTERLINE OF IL 19 (IRVING PARK ROAD) AS SHOWN ON STAGE 2 SUGGESTED MAINTENANCE OF TRAFFIC PLAN.

CONTINUE STORM SEWER INSTALLATION.

STAGE 2 - SUGGESTED MAINTENANCE OF TRAFFIC

INSTALL LANE CLOSURE ADVANCE SIGNING ACCORDING TO THE PLANS.

COVER AND REMOVE PERMANENT SIGNS AS NEEDED FOR STAGE 2 CONSTRUCTION.

REMOVE ALL CONFLICTING RAISED REFLECTIVE PAVEMENT MARKERS WITHIN THE PROJECT LIMITS.

REMOVAL ALL CONFLICTING PAVEMENT MARKINGS ALONG IL 19 (IRVING PARK ROAD) AND INSTALL TEMPORARY PAVEMENT MARKINGS AND TRAFFIC CONTROL FOR LANE DROPS PER THE MOT PLAN SHEETS.

INSTALL ALL TEMPORARY PAVEMENT MARKING AND TEMPORARY TRAFFIC CONTROL DEVICES FOR STAGE 2 CONSTRUCTION, SHIFT TRAFFIC.

STAGE 3 - CONSTRUCTION OF IL 19 (IRVING PARK ROAD)

CONSTRUCT 18' OF PAVEMENT ON THE SOUTHSIDE OF IL 19 (IRVING PARK ROAD). CONSTRUCT THE SOUTH CURB AND GUTTER AND SOUTH RETAINING WALLS.

CONTINUE STORM SEWER INSTALLATION.

STAGE 3 - SUGGESTED MAINTENANCE OF TRAFFIC

INSTALL LANE CLOSURE ADVANCE SIGNING ACCORDING TO THE PLANS.

COVER AND REMOVE PERMANENT SIGNS AS NEEDED FOR STAGE 3 CONSTRUCTION.

REMOVE ALL CONFLICTING RAISED REFLECTIVE PAVEMENT MARKERS WITHIN THE PROJECT LIMITS.

REMOVAL ALL CONFLICTING PAVEMENT MARKINGS ALONG IL 19 (IRVING PARK ROAD) AND INSTALL TEMPORARY PAVEMENT MARKINGS AND TRAFFIC CONTROL FOR LANE DROPS PER THE MOT PLAN SHEETS.

INSTALL ALL TEMPORARY PAVEMENT MARKING AND TEMPORARY TRAFFIC CONTROL DEVICES FOR STAGE 3 CONSTRUCTION, SHIFT TRAFFIC.

PLACE TOPSOIL, SEED, SOD AND ALL OTHER RESTORATION ITEMS.

COMPLETE REMAINING CONSTRUCTION, CLEAN -UP AND PUNCH LIST.

END CONSTRUCTION

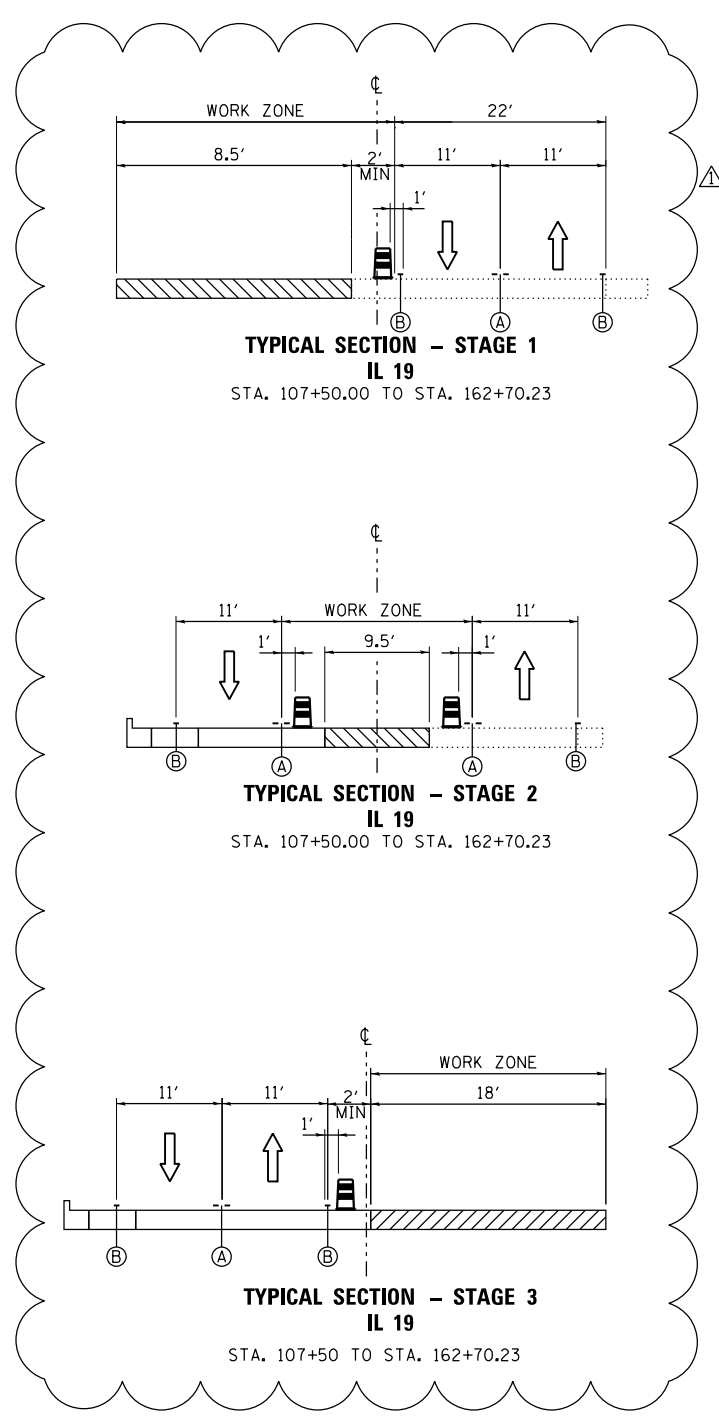
REMOVE TEMPORARY PAVEMENT AND FINALIZE DRIVEWAYS.

RE-ESTABLISH PERMANENT PAVEMENT MARKING, RAISED REFLECTIVE PAVEMENT MARKERS AND RECESSED REFLECTION PAVEMENT MARKERS AND RECESSED REFLECTIVE PAVEMENT MARKERS IN ACCORDANCE WITH DISTRICT 1 DETAILS AND COOK COUNTY DETAILS UTILIZING LANE CLOSURES.

REPLACE LENSES ON RAISED REFLECTIVE PAVEMENT MARKERS WHERE TEMPORARILY REMOVED. SHIFT TRAFFIC.

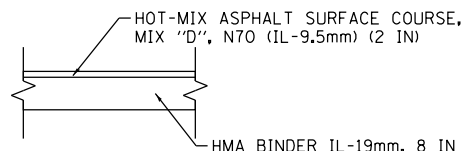
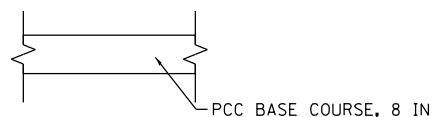
REMOVAL ALL CONSTRUCTION SIGNING AND TRAFFIC CONTROL MEASURES.

UNCOVER ALL PERMANENT SIGNS.



TEMPORARY PAVEMENT DETAILS

(CONTRACTOR HAS THE OPTION OF USING HMA OR PCC SECTION FOR TEMPORARY PAVEMENT)



- Ⓐ 4" DOUBLE YELLOW @ 11" C-C PAVEMENT MARKING
- Ⓑ 4" SOLID WHITE PAVEMENT MARKING

HRG PROJECT NO: 20045
 HRG PROJ CONTACT:
 FILE NAME: 20045-spr-stage-02.dgn
 PEN TABLE: 10/10/2023



USER NAME = jhorwit	DESIGNED -	REVISED - 12/15/2023
PLOT SCALE = 20.0000' / in.	DRAWN - WJH	REVISED -
PLOT DATE = 1/4/2024	CHECKED - TEH	REVISED -
	DATE -	REVISED -

**STATE OF ILLINOIS
DEPARTMENT OF TRANSPORTATION**

**SUGGESTED MAINTENANCE OF TRAFFIC
SEQUENCE OF CONSTRUCTION**

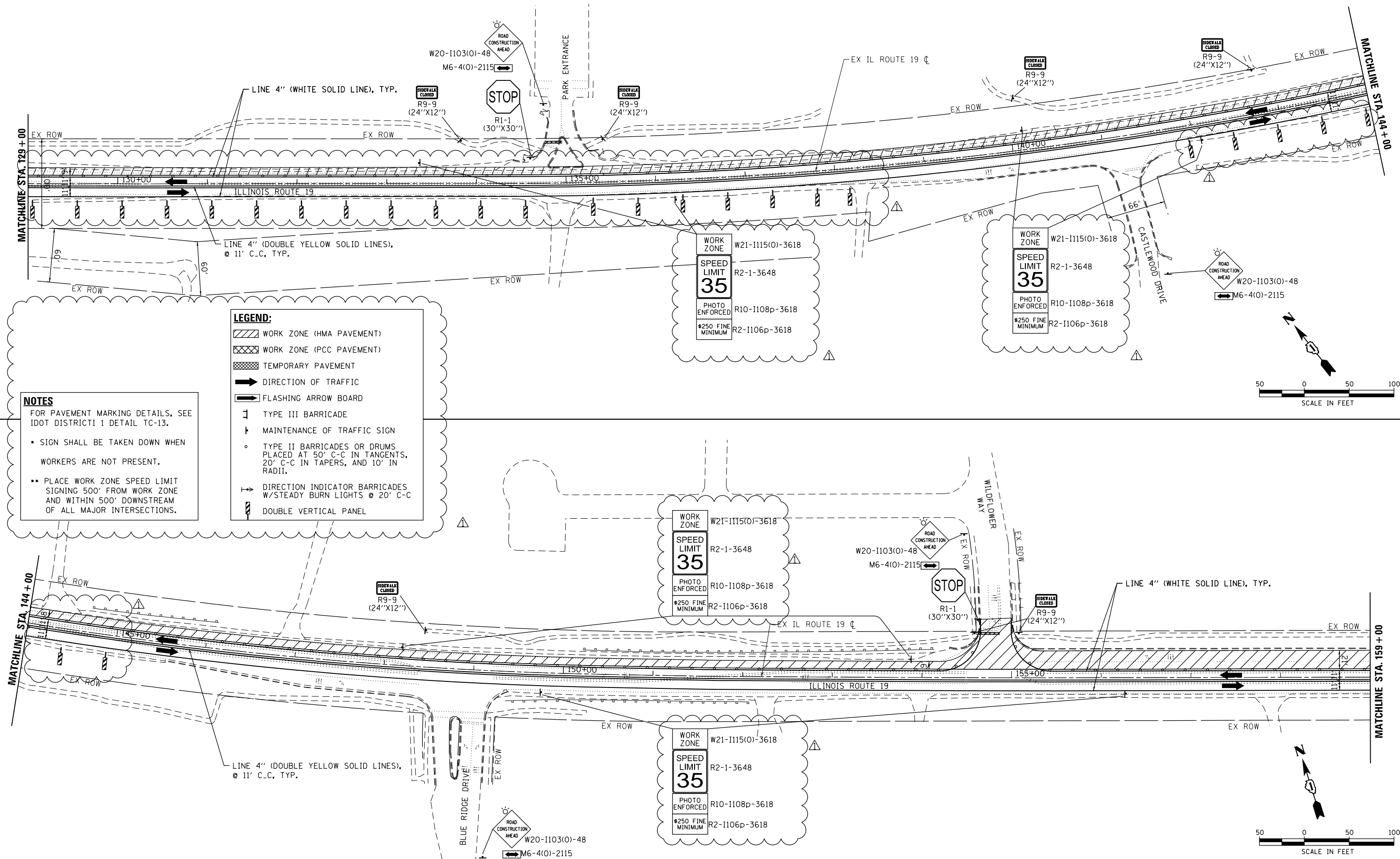
SCALE: SHEET OF SHEETS STA. TO STA.

F.A. RTE.	SECTION	COUNTY	TOTAL SHEETS	SHEET NO.
1321	10-00055-02-WR	COOK	133	27
ILLINOIS FED. AID PROJECT			CONTRACT NO. 61K06	

PLAN	SURVEYED	DATE
	PLOTTED	
	GRADES CHECKED	
	ALIGNED	
	STRUCTURE	
	NOTED THIS CHECK	
	NO.	

PROFILE	SURVEYED	DATE
	PLOTTED	
	GRADES CHECKED	
	ALIGNED	
	STRUCTURE	
	NOTED THIS CHECK	
	NO.	

HRG PROJECT NO. 20045
 HRG PROJ. CONT. ACT.
 FILE NAME: 20045-SPT-5-Stageing-mtr1-02.dgn
 PEN TABLE: 10/10/2023
 HRG



NOTES
 FOR PAVEMENT MARKING DETAILS, SEE IDOT DISTRICT 1 DETAIL TC-13.

- SIGN SHALL BE TAKEN DOWN WHEN WORKERS ARE NOT PRESENT.
- PLACE WORK ZONE SPEED LIMIT SIGNING 500' FROM WORK ZONE AND WITHIN 500' DOWNSTREAM OF ALL MAJOR INTERSECTIONS.

LEGEND:

- WORK ZONE (HMA PAVEMENT)
- WORK ZONE (PCC PAVEMENT)
- TEMPORARY PAVEMENT
- DIRECTION OF TRAFFIC
- FLASHING ARROW BOARD
- TYPE III BARRICADE
- MAINTENANCE OF TRAFFIC SIGN
- TYPE II BARRICADES OR DRUMS PLACED AT 50' C-C IN TANGENTS, 20' C-C IN TAPERS, AND 10' IN RADII.
- DIRECTION INDICATOR BARRICADES W/STEADY BURN LIGHTS @ 20' C-C
- DOUBLE VERTICAL PANEL



HRGreen.com
 Micro Professional Design Firm
 #184-001322

USER NAME = jhorwit	DESIGNED -	REVISED -	12/15/2023
	DRAWN - JCH	REVISED -	
PLOT SCALE = 100.0000' / in.	CHECKED - TEH	REVISED -	
PLOT DATE = 1/4/2024	DATE -	REVISED -	

STATE OF ILLINOIS
 DEPARTMENT OF TRANSPORTATION

SUGGESTED MAINTENANCE OF TRAFFIC - STAGE 1
 IL RTE 19 (IRVING PARK RD)

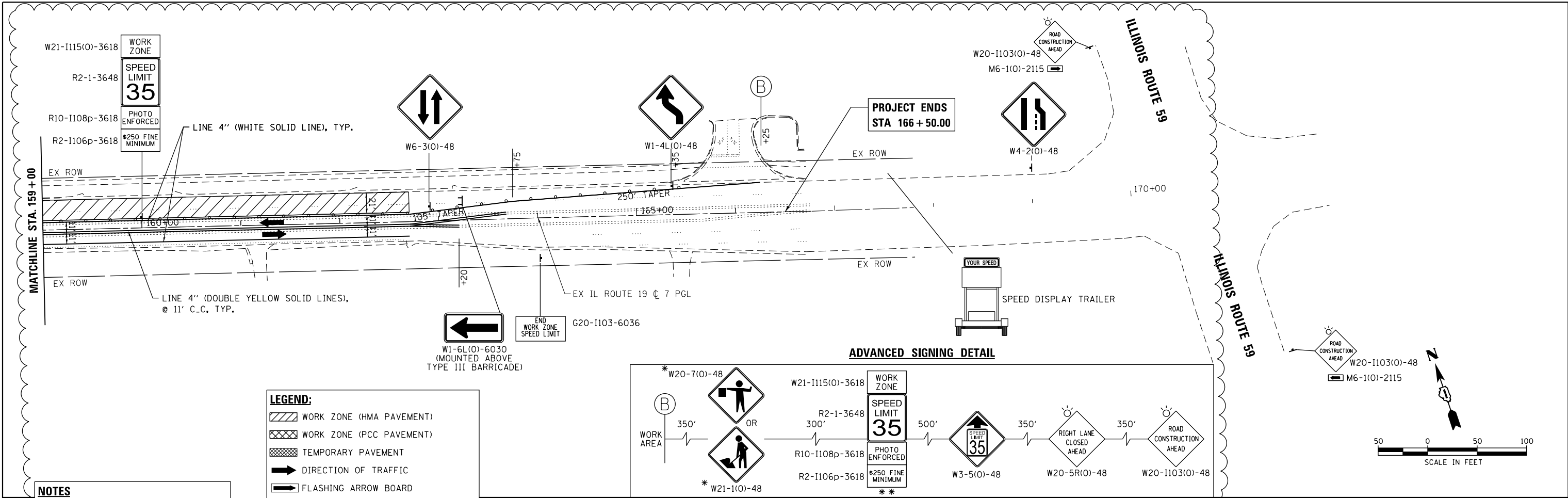
SCALE: 1"=50' SHEET 2 OF 9 SHEETS STA. 129+00 TO STA. 159+00

F.A. RTE.	SECTION	COUNTY	TOTAL SHEETS	SHEET NO.
1321	10-00055-02-WR	COOK	133	29
CONTRACT NO. 61K06				
ILLINOIS FED. AID PROJECT				

PLAN	SURVEYED	DATE
	PLOTTED	
	ALIGNED	
	CHECKED	
	FILED	
	NO.	

PROFILE	SURVEYED	DATE
	PLOTTED	
	GRADES	
	CHECKED	
	STRUCTURE	
	NOTATIS	
	CHKD	
	NO.	

HRG PROJECT NO. 20045
 HRG PROJ. CONT. ACT.
 FILE NAME: 20045-SPT-5-Stage1-mo11-03.dgn
 PEN TABLE: 10/10/2023



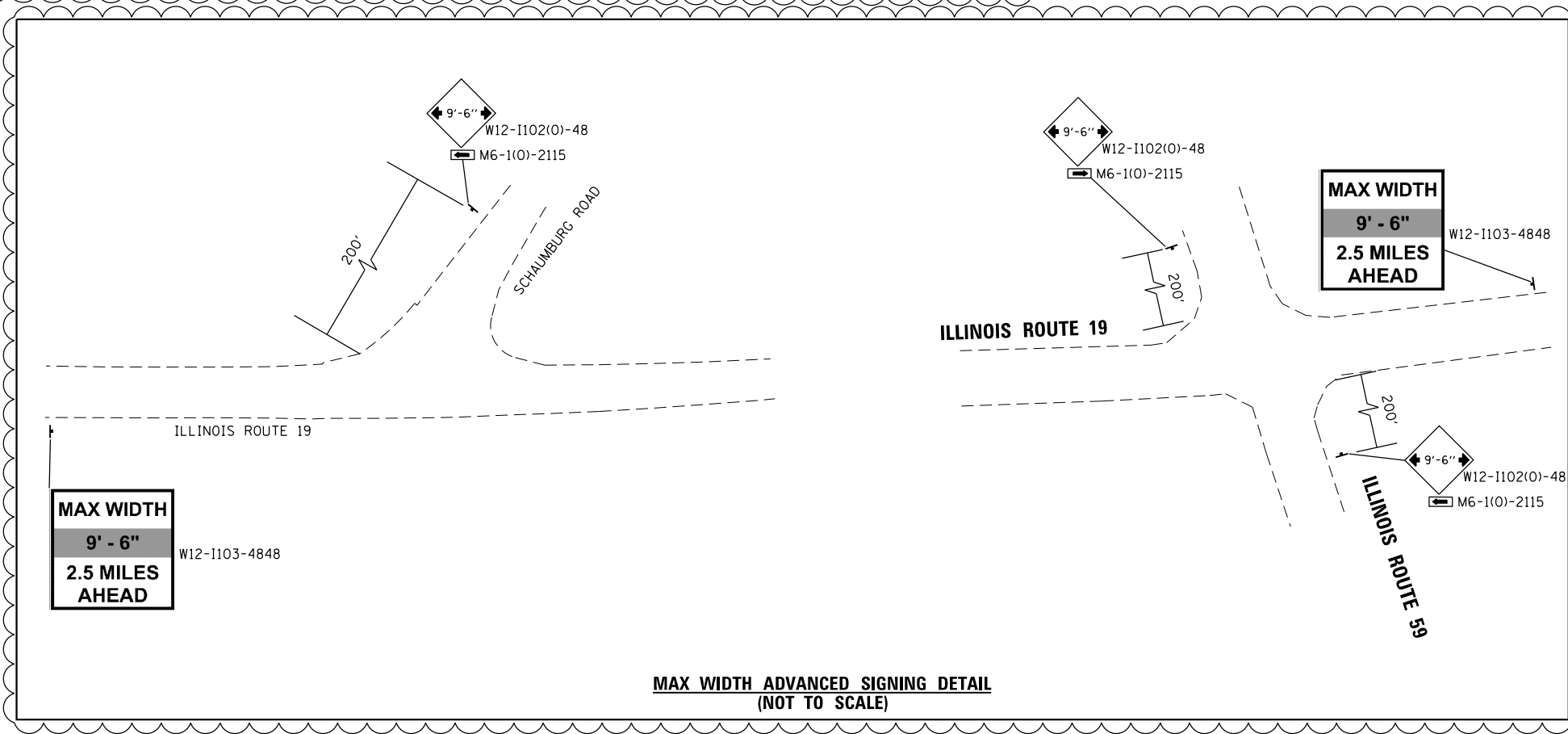
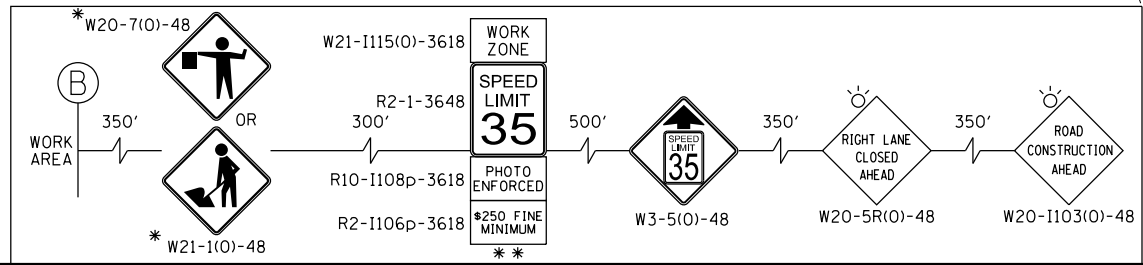
NOTES

FOR PAVEMENT MARKING DETAILS, SEE IDOT DISTRICT 1 DETAIL TC-13.

- SIGN SHALL BE TAKEN DOWN WHEN WORKERS ARE NOT PRESENT.
- PLACE WORK ZONE SPEED LIMIT SIGNING 500' FROM WORK ZONE AND WITHIN 500' DOWNSTREAM OF ALL MAJOR INTERSECTIONS.

LEGEND:

	WORK ZONE (HMA PAVEMENT)
	WORK ZONE (PCC PAVEMENT)
	TEMPORARY PAVEMENT
	DIRECTION OF TRAFFIC
	FLASHING ARROW BOARD
	TYPE III BARRICADE
	MAINTENANCE OF TRAFFIC SIGN
	TYPE II BARRICADES OR DRUMS PLACED AT 50' C-C IN TANGENTS, 20' C-C IN TAPERS, AND 10' IN RADII.
	DIRECTION INDICATOR BARRICADES W/STEADY BURN LIGHTS @ 20' C-C
	DOUBLE VERTICAL PANEL

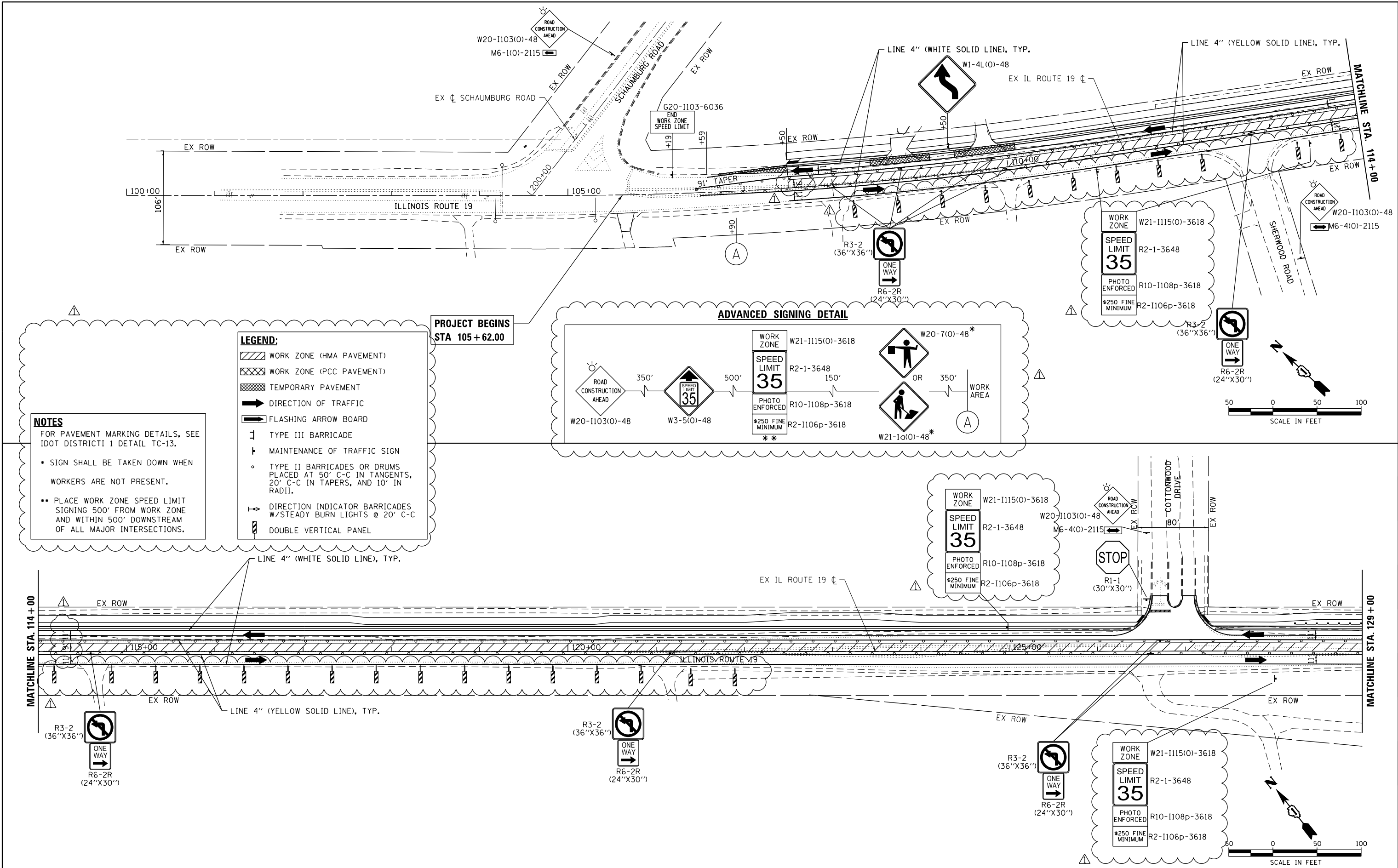


	HRGreen.com Illinois Professional Design Firm #184-001322	USER NAME = jhorwit DESIGNED - DRAWN - JCH CHECKED - TEH DATE -	REVISED - 12/15/2023 REVISED - REVISED - REVISED -	STATE OF ILLINOIS DEPARTMENT OF TRANSPORTATION	SUGGESTED MAINTENANCE OF TRAFFIC – STAGE 1 IL RTE 19 (IRVING PARK RD)			F.A. RTE. 1321 SECTION 10-00055-02-WR COUNTY COOK TOTAL SHEETS 133 SHEET NO. 30
	PLOT SCALE = 100,0000' / in. PLOT DATE = 1/4/2024	SCALE: 1"=50' SHEET 3 OF 9 SHEETS STA. 159+00 TO STA. 166+50.00	CONTRACT NO. 61K06 ILLINOIS FED. AID PROJECT					

PLAN	SURVEYED	DATE
	PLOTTED	
	GRADES CHECKED	
	ALIGNED	
	CHECKED	
	FILED	
	DATE	
	BY	

PROFILE	SURVEYED	DATE
	PLOTTED	
	GRADES CHECKED	
	ALIGNED	
	CHECKED	
	FILED	
	DATE	
	BY	

HRG PROJECT NO. 20045
 HRG PROJ. CONT. ACT.
 FILE NAME: 20045-spr+staging-mv2-01.dgn
 PEN TABLE: 10/1/2024.tbl

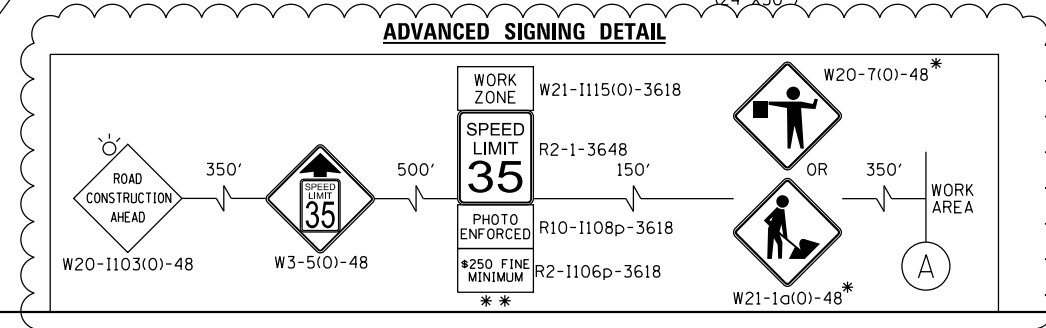


NOTES

FOR PAVEMENT MARKING DETAILS, SEE IDOT DISTRICT 1 DETAIL TC-13.

- SIGN SHALL BE TAKEN DOWN WHEN WORKERS ARE NOT PRESENT.
- PLACE WORK ZONE SPEED LIMIT SIGNING 500' FROM WORK ZONE AND WITHIN 500' DOWNSTREAM OF ALL MAJOR INTERSECTIONS.

- LEGEND:**
- WORK ZONE (HMA PAVEMENT)
 - WORK ZONE (PCC PAVEMENT)
 - TEMPORARY PAVEMENT
 - DIRECTION OF TRAFFIC
 - FLASHING ARROW BOARD
 - TYPE III BARRICADE
 - MAINTENANCE OF TRAFFIC SIGN
 - TYPE II BARRICADES OR DRUMS PLACED AT 50' C-C IN TANGENTS, 20' C-C IN TAPERS, AND 10' IN RADII.
 - DIRECTION INDICATOR BARRICADES W/STEADY BURN LIGHTS @ 20' C-C
 - DOUBLE VERTICAL PANEL



USER NAME	= jhorwit	DESIGNED	-	REVISION	-	DATE	12/15/2023
DRAWN	- JCH	CHECKED	- TEH	REVISION	-	DATE	-
PLOT SCALE	= 100.0000' / in.						
PLOT DATE	= 1/4/2024						

STATE OF ILLINOIS
DEPARTMENT OF TRANSPORTATION

SUGGESTED MAINTENANCE OF TRAFFIC - STAGE 2
IL RTE 19 (IRVING PARK RD)

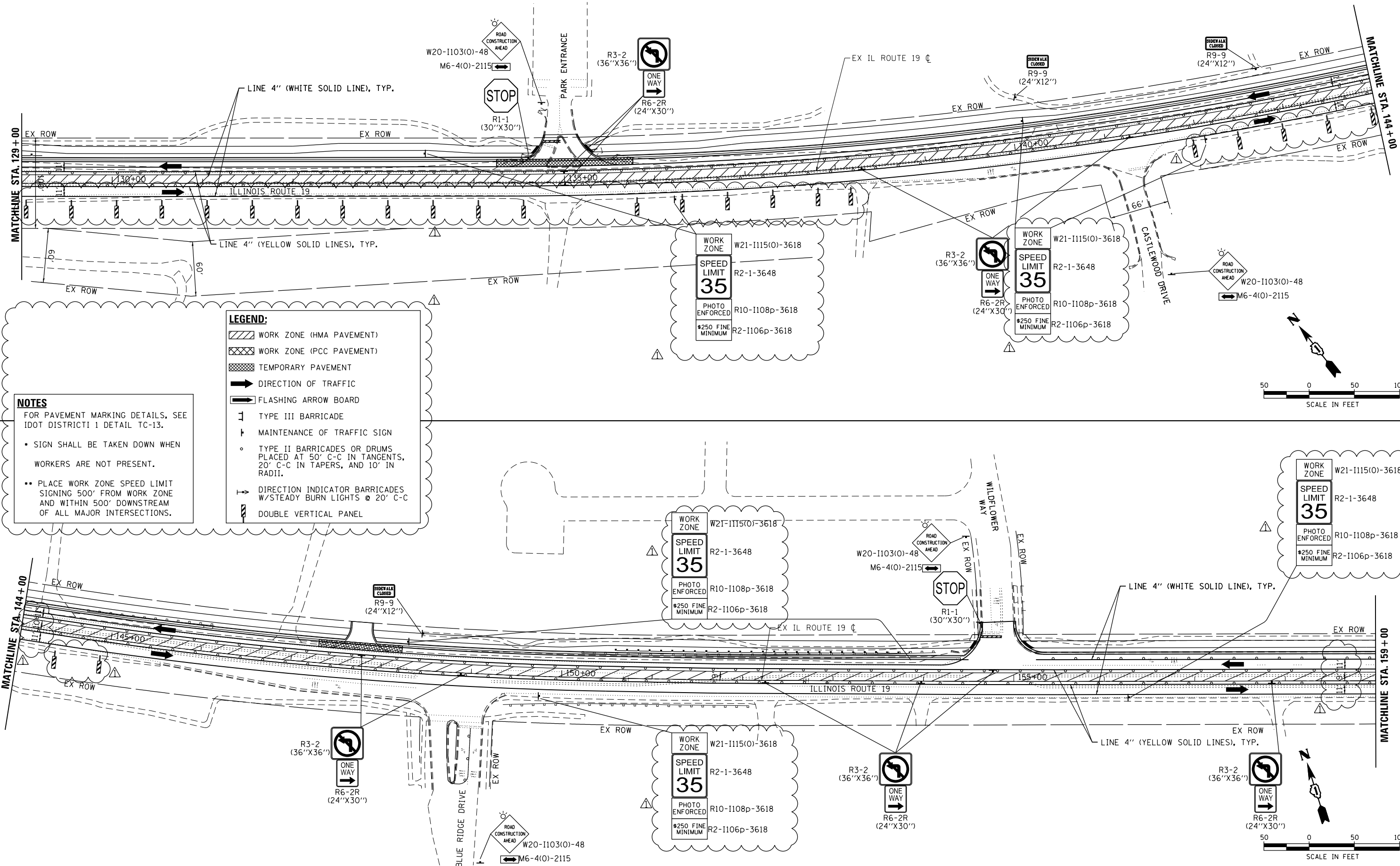
SCALE: 1"=50' SHEET 4 OF 9 SHEETS STA. 105+62.00 TO STA. 129+00

F.A. RTE.	SECTION	COUNTY	TOTAL SHEETS	SHEET NO.
1321	10-00055-02-WR	COOK	133	31
ILLINOIS FED. AID PROJECT				CONTRACT NO. 61K06

PLAN	SURVEYED	DATE
	PLOTTED	BY
	ALIGNED	
	CHECKED	
	FILED	
	NO. 1	
	NO. 2	
	NO. 3	
	NO. 4	
	NO. 5	
	NO. 6	
	NO. 7	
	NO. 8	
	NO. 9	
	NO. 10	

PROFILE	SURVEYED	DATE
	PLOTTED	BY
	GRADES CHECKED	
	NOTE BOOK	
	STRUCTURE	
	NOTATIONS	
	CHKD	
	NO. 1	
	NO. 2	
	NO. 3	
	NO. 4	
	NO. 5	
	NO. 6	
	NO. 7	
	NO. 8	
	NO. 9	
	NO. 10	

HRG PROJECT NO. 20045
 HRG PROJ. CONT. ACT.
 FILE NAME: 20045-spr+5-tagging-mv2-02.dgn
 PEN TABLE: 10/10/2023
 HRGreen.com



NOTES

FOR PAVEMENT MARKING DETAILS, SEE IDOT DISTRICT 1 DETAIL TC-13.

- SIGN SHALL BE TAKEN DOWN WHEN WORKERS ARE NOT PRESENT.
- PLACE WORK ZONE SPEED LIMIT SIGNING 500' FROM WORK ZONE AND WITHIN 500' DOWNSTREAM OF ALL MAJOR INTERSECTIONS.

LEGEND:

- WORK ZONE (HMA PAVEMENT)
- WORK ZONE (PCC PAVEMENT)
- TEMPORARY PAVEMENT
- DIRECTION OF TRAFFIC
- FLASHING ARROW BOARD
- TYPE III BARRICADE
- MAINTENANCE OF TRAFFIC SIGN
- TYPE II BARRICADES OR DRUMS PLACED AT 50' C-C IN TANGENTS, 20' C-C IN TAPERS, AND 10' IN RADII.
- DIRECTION INDICATOR BARRICADES W/STEADY BURN LIGHTS @ 20' C-C
- DOUBLE VERTICAL PANEL



HRGreen.com
 Micro Professional Design Firm
 #184-001322

USER NAME	= jhorwit
DESIGNED	-
DRAWN	- JCH
CHECKED	- TEH
DATE	-
REVISIONS	
1	12/15/2023
2	
3	
4	
5	

**STATE OF ILLINOIS
 DEPARTMENT OF TRANSPORTATION**

**SUGGESTED MAINTENANCE OF TRAFFIC - STAGE 2
 IL RTE 19 (IRVING PARK RD)**

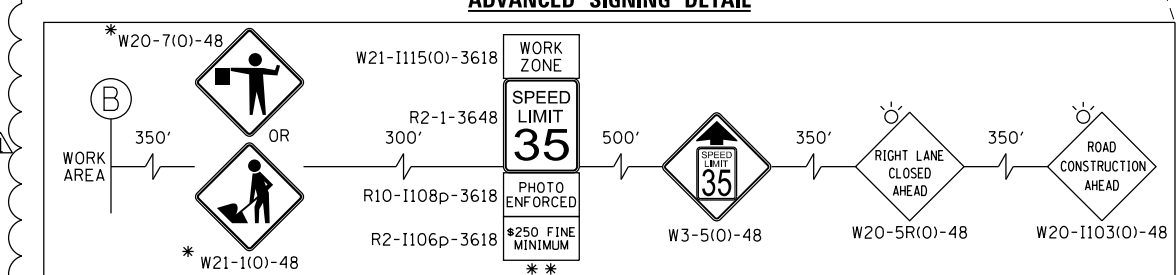
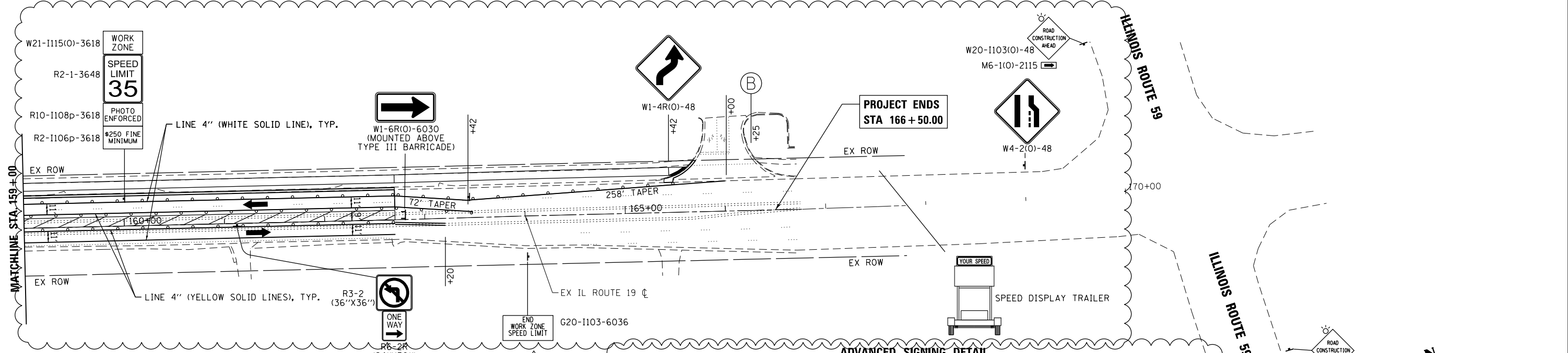
SCALE: 1"=50' SHEET 5 OF 9 SHEETS STA. 129+00 TO STA. 159+00

F.A. RTE.	SECTION	COUNTY	TOTAL SHEETS	SHEET NO.
1321	10-00055-02-WR	COOK	133	32
				CONTRACT NO. 61K06
ILLINOIS FED. AID PROJECT				

PLAN	SURVEYED	DATE
	PLOTTED	
	ALIGNED	
	CHECKED	
	FILED	
	NO.	

PROFILE	SURVEYED	DATE
	PLOTTED	
	GRADES CHECKED	
	STRUCTURE	
	NOT AT THIS OFFICE	
	NO.	

HRG PROJECT NO. 20045
 HRG PROJ. CONT. ACT.
 FILE NAME: 20045-spr+5-Straging-mv2-01.dgn
 PEN TABLE: 1/10/2024

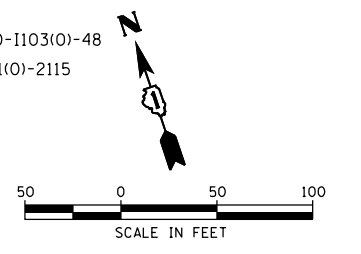
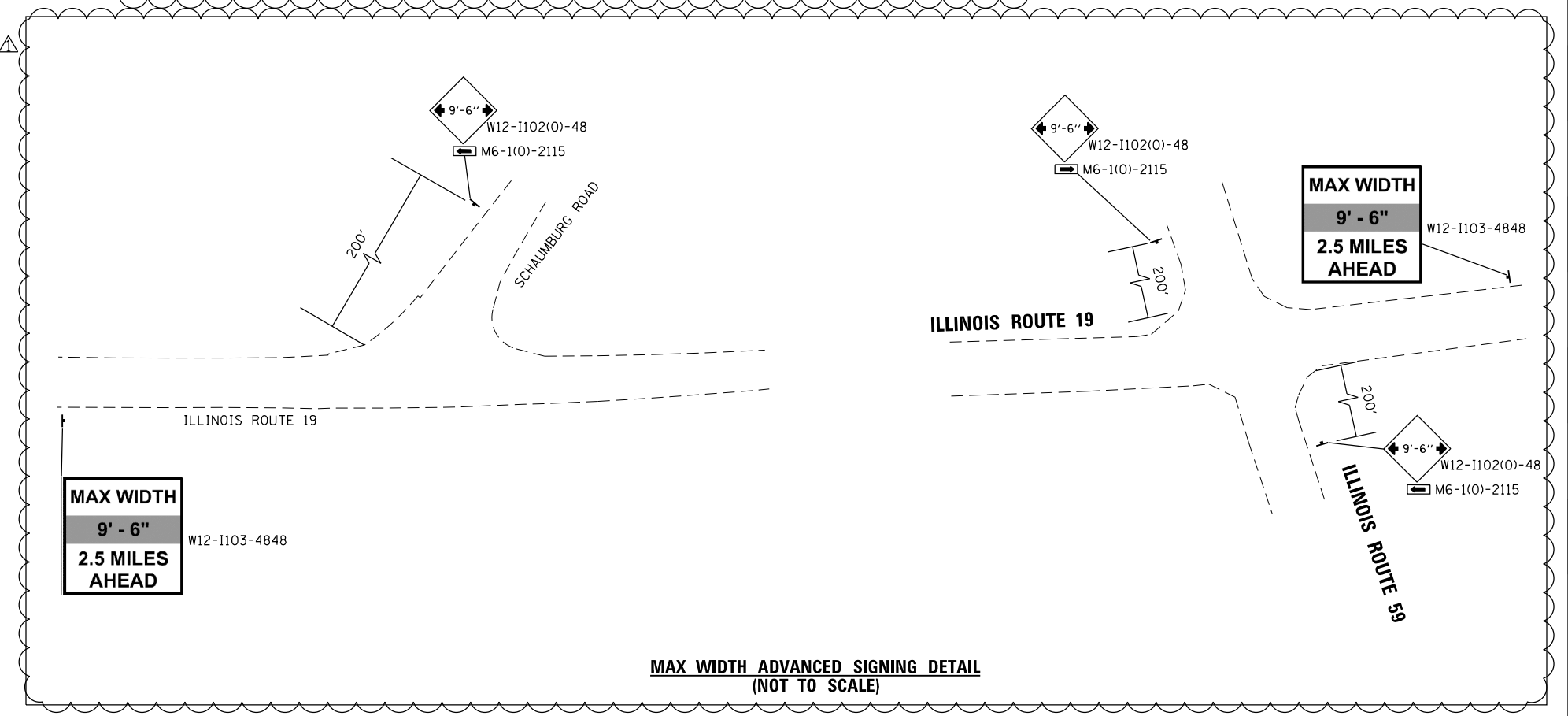


NOTES

FOR PAVEMENT MARKING DETAILS, SEE IDOT DISTRICT 1 DETAIL TC-13.

- SIGN SHALL BE TAKEN DOWN WHEN WORKERS ARE NOT PRESENT.
- PLACE WORK ZONE SPEED LIMIT SIGNING 500' FROM WORK ZONE AND WITHIN 500' DOWNSTREAM OF ALL MAJOR INTERSECTIONS.

- LEGEND:**
- WORK ZONE (HMA PAVEMENT)
 - WORK ZONE (PCC PAVEMENT)
 - TEMPORARY PAVEMENT
 - DIRECTION OF TRAFFIC
 - FLASHING ARROW BOARD
 - TYPE III BARRICADE
 - MAINTENANCE OF TRAFFIC SIGN
 - TYPE II BARRICADES OR DRUMS PLACED AT 50' C-C IN TANGENTS, 20' C-C IN TAPERS, AND 10' IN RADII.
 - DIRECTION INDICATOR BARRICADES W/STEADY BURN LIGHTS @ 20' C-C
 - DOUBLE VERTICAL PANEL



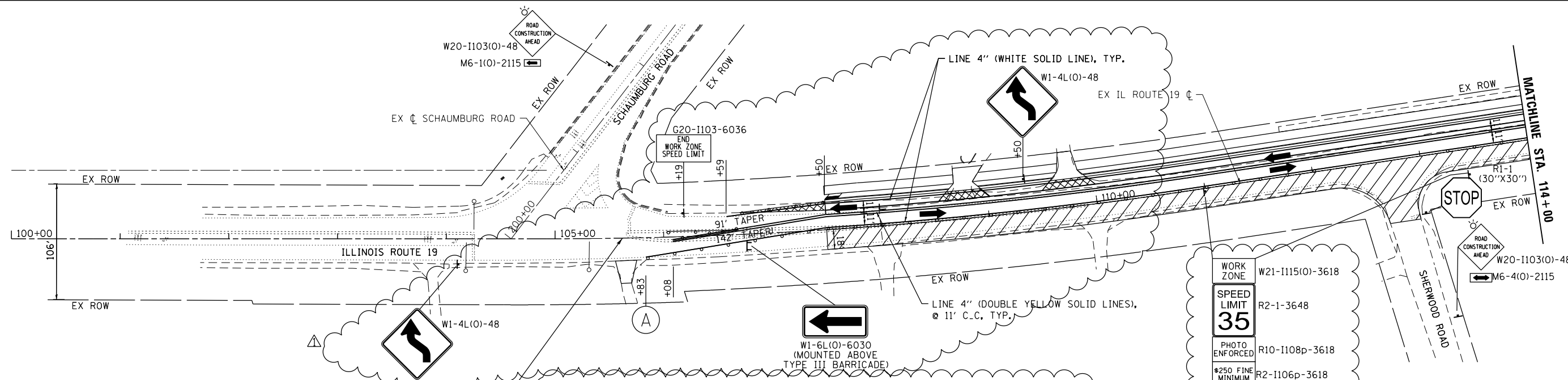
USER NAME = jhorwit	DESIGNED -	REVISED - 12/15/2023
	DRAWN - JCH	REVISED -
	CHECKED - TEH	REVISED -
	DATE -	REVISED -
PLOT SCALE = 1/4"=20'		
PLOT DATE = 1/4/2024		

F.A. RTE.	SECTION	COUNTY	TOTAL SHEETS	SHEET NO.
1321	10-00055-02-WR	COOK	133	33
				CONTRACT NO. 61K06
ILLINOIS FED. AID PROJECT				

DATE	BY
PLAN	SURVEYED
NOTE BOOK	GRADES CHECKED
NO.	STRUCTURE NOTATIONS CHECKED

DATE	BY
PROFILE	SURVEYED
NOTE BOOK	GRADES CHECKED
NO.	STRUCTURE NOTATIONS CHECKED

HRG PROJECT NO: 20045
 HRG PROJ. CONT. ACT:
 FILE NAME: 20045-spr+5+staging-mv+3-0.dgn
 PEN TABLE: p101tbl.dtl

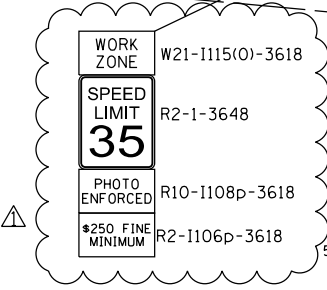
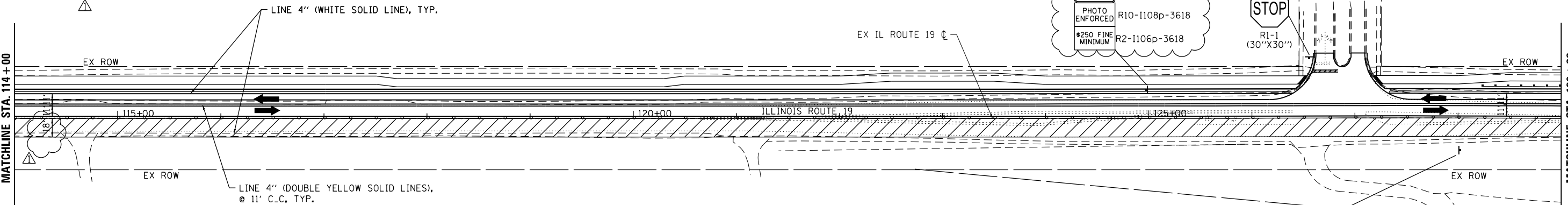
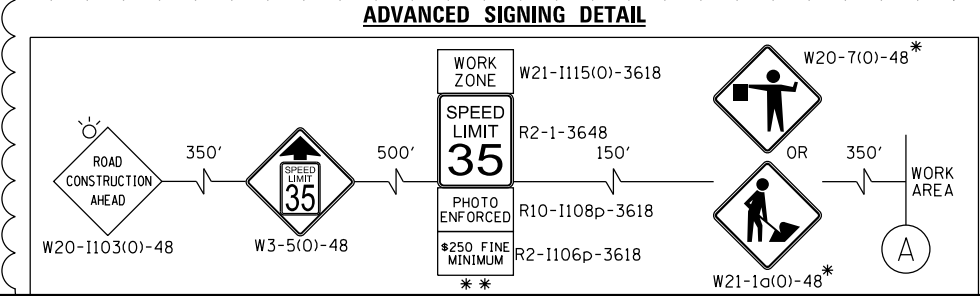


NOTES

FOR PAVEMENT MARKING DETAILS, SEE IDOT DISTRICT 1 DETAIL TC-13.

- SIGN SHALL BE TAKEN DOWN WHEN WORKERS ARE NOT PRESENT.
- PLACE WORK ZONE SPEED LIMIT SIGNING 500' FROM WORK ZONE AND WITHIN 500' DOWNSTREAM OF ALL MAJOR INTERSECTIONS.

- LEGEND:**
- WORK ZONE (HMA PAVEMENT)
 - WORK ZONE (PCC PAVEMENT)
 - TEMPORARY PAVEMENT
 - DIRECTION OF TRAFFIC
 - FLASHING ARROW BOARD
 - TYPE III BARRICADE
 - MAINTENANCE OF TRAFFIC SIGN
 - TYPE II BARRICADES OR DRUMS PLACED AT 50' C-C IN TANGENTS, 20' C-C IN TAPERS, AND 10' IN RADII.
 - DIRECTION INDICATOR BARRICADES W/STEADY BURN LIGHTS @ 20' C-C
 - DOUBLE VERTICAL PANEL



USER NAME = jhorwit	DESIGNED -	REVISED -	12/15/2023
	DRAWN - JCH	REVISED -	
PLOT SCALE = 100.0000' / in.	CHECKED - TEH	REVISED -	
PLOT DATE = 1/4/2024	DATE -	REVISED -	

**SUGGESTED MAINTENANCE OF TRAFFIC - STAGE 3
 IL RTE 19 (IRVING PARK RD)**

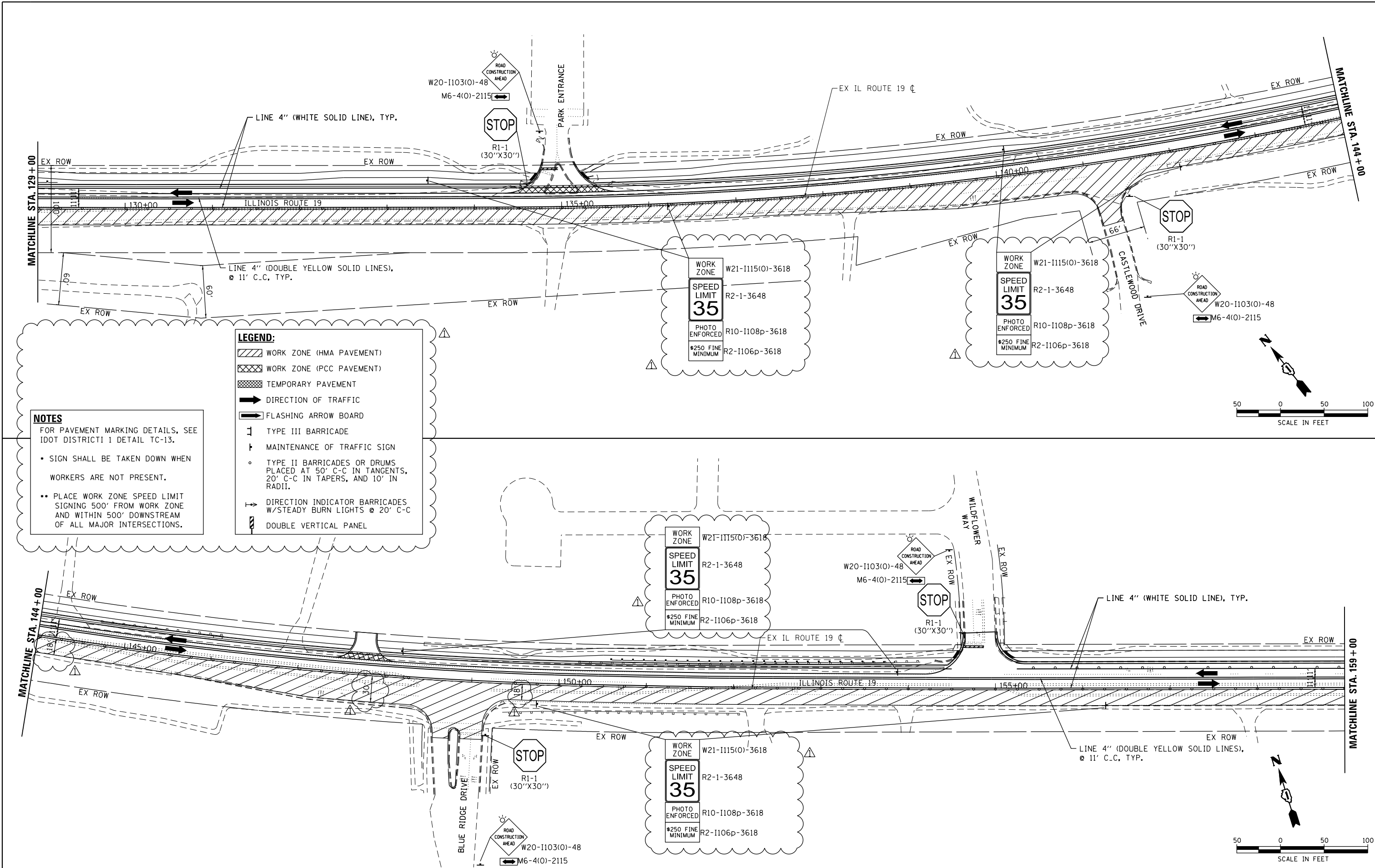
SCALE: 1"=50' SHEET 7 OF 9 SHEETS STA. 105+62.00 TO STA. 129+00

F.A. RTE.	SECTION	COUNTY	TOTAL SHEETS	SHEET NO.
1321	10-00055-02-WR	COOK	133	34
CONTRACT NO. 61K06				
ILLINOIS FED. AID PROJECT				

PLAN	SURVEYED	DATE
	PLOTTED	
	GRADES CHECKED	
	ALIGNMENT CHECKED	
	STRUCTURE NOTATIONS CHECKED	
	NOTE BOOK NO.	
	BY	

PROFILE	SURVEYED	DATE
	PLOTTED	
	GRADES CHECKED	
	ALIGNMENT CHECKED	
	STRUCTURE NOTATIONS CHECKED	
	NOTE BOOK NO.	
	BY	

HRG PROJECT NO.: 200405
 HRG PROJ. CONT. ACT:
 FILE NAME: 200405-spr+5-staging-mcr+3-02.dgn
 PEN TABLE: 10/10/2023
 HRG

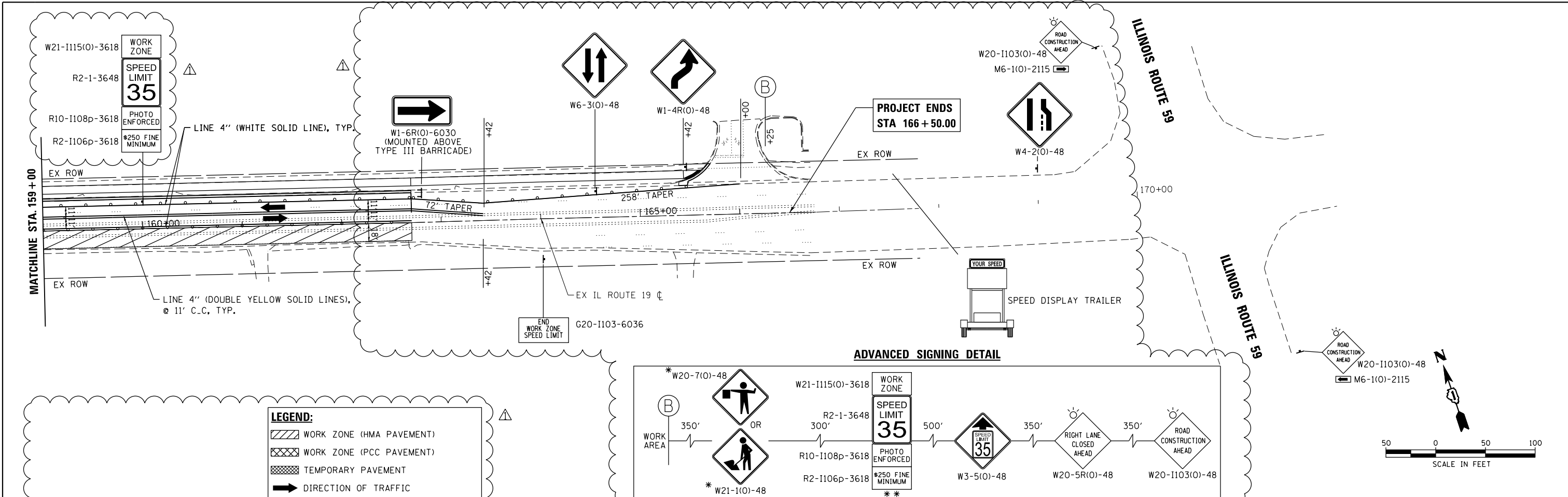


	USER NAME = jhorwit DESIGNED - DRAWN - JCH CHECKED - TEH DATE - 1/4/2024	DESIGNED - DRAWN - JCH CHECKED - TEH DATE - 1/4/2024	REVISED - 12/15/2023 REVISED - REVISED - REVISED -	STATE OF ILLINOIS DEPARTMENT OF TRANSPORTATION	SUGGESTED MAINTENANCE OF TRAFFIC - STAGE 3 IL RTE 19 (IRVING PARK RD)	SCALE: 1"=50' SHEET 8 OF 9 SHEETS STA. 129+00 TO STA. 159+00	F.A. RTE. 1321 SECTION 10-00055-02-WR COUNTY COOK TOTAL SHEETS 133 SHEET NO. 35 CONTRACT NO. 61K06	ILLINOIS FED. AID PROJECT
	HRGreen.com Illinois Professional Design Firm #184-001322	PLOT SCALE = 100,0000' / in. PLOT DATE = 1/4/2024	PLOT DATE = 1/4/2024			SCALE: 1"=50' SHEET 8 OF 9 SHEETS STA. 129+00 TO STA. 159+00	ILLINOIS FED. AID PROJECT	

PLAN	SURVEYED	BY	DATE
	PLOTTED		
	ALIGNED		
	CHECKED		
	FILED		
	NO. _____		

PROFILE	SURVEYED	BY	DATE
	PLOTTED		
	GRADES		
	CHECKED		
	STRUCTURE		
	NOT AT THIS OFFICE		
	NO. _____		

HRG PROJECT NO.: 20045
 HRG PROJ. CONT. ACT:
 FILE NAME: 20045-spr+5-Straging-mcr+3-03.dgn
 PEN TABLE: 1/10/2024



LEGEND:

- WORK ZONE (HMA PAVEMENT)
- WORK ZONE (PCC PAVEMENT)
- TEMPORARY PAVEMENT
- DIRECTION OF TRAFFIC
- FLASHING ARROW BOARD
- TYPE III BARRICADE
- MAINTENANCE OF TRAFFIC SIGN
- TYPE II BARRICADES OR DRUMS PLACED AT 50' C-C IN TANGENTS, 20' C-C IN TAPERS, AND 10' IN RADII.
- DIRECTION INDICATOR BARRICADES W/STEADY BURN LIGHTS @ 20' C-C
- DOUBLE VERTICAL PANEL

NOTES

FOR PAVEMENT MARKING DETAILS, SEE IDOT DISTRICT I DETAIL TC-13.

- SIGN SHALL BE TAKEN DOWN WHEN WORKERS ARE NOT PRESENT.
- PLACE WORK ZONE SPEED LIMIT SIGNING 500' FROM WORK ZONE AND WITHIN 500' DOWNSTREAM OF ALL MAJOR INTERSECTIONS.

