

BILL OF MATERIAL

Tree Removal, Acres	Acres	0.96
Removal of Existing Structures	L Sum	1
P.R.C. Flared End Section 48"	Each	1
Storm Sewers, Class A, Type 2 48"	Foot	1254
Manholes, Type A, 6'-Dia., Ty. 1 Frame, Closed Lid	Each	5
Seeding, Mulching and Fertilizing	Acres	2.0
Perimeter Erosion Barrier	Foot	362
Filter Fabric for Use with Riprap	Sq.Yd.	18
Stone Riprap, Class A4	Sq.Yd.	18
Controlled Low-Strength Material	Cu.Yd.	59
Bituminous Concrete Surface Course	Ton	3
Aggregate Base Course, Type B 4"	Sq.Yd.	24
Pavement Removal	Sq.Yd.	24
Cofferdams	Each	1

DETAIL "A"

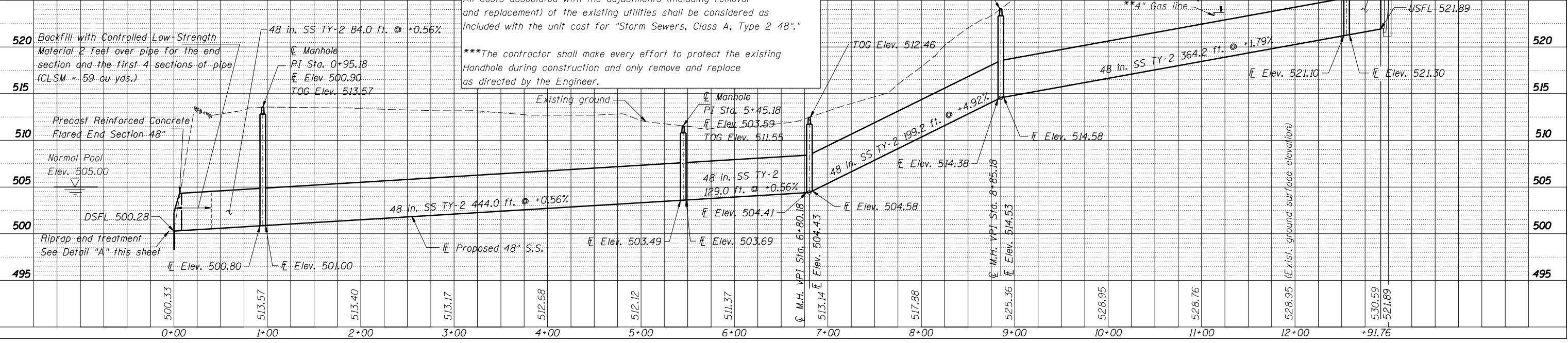
Notes:
Excavation for Riprap shall be to indicated depths or to firm bedrock if encountered at a higher elevation. Riprap bedding is not required under Stone Riprap when placed on firm bedrock.

* The quantity for Tree Removal includes the areas of timber within the temporary easement. The Contractor shall remove only the trees necessary to facilitate S.S. replacement as approved by the Engineer and quantity shall be adjusted accordingly.

**The depths of the existing utilities (sanitary sewer, storm sewers, gas line, and telephone line) shall be determined in the field before construction of S.S. has commenced, and any necessary adjustments to proposed S.S. depth and manhole invert elevations shall be made accordingly to avoid conflict with these existing utilities. All adjustments shall be approved by the Engineer. Existing utilities shall be adjusted as required to facilitate removal and replacement of the 48" S.S. All costs associated with the adjustments (including removal and replacement) of the existing utilities shall be considered as included with the unit cost for "Storm Sewers, Class A, Type 2 48".

***The contractor shall make every effort to protect the existing Handhole during construction and only remove and replace as directed by the Engineer.

Note A:
Excavation and backfill costs shall be considered as included with the "Storm Sewer" pay item. The removal and disposal of the existing 48" CMP shall be paid for as Removal of Existing Structures. Location of pipe and stationing is approximate. Refer to note on sheet 5. Place manholes at existing pipe bend points and grade changes found in field as directed by the Engineer.



DESIGNED BY: RLP
DRAWN BY: JLF

CHECKED BY: JLF
CHECKED BY: RLP