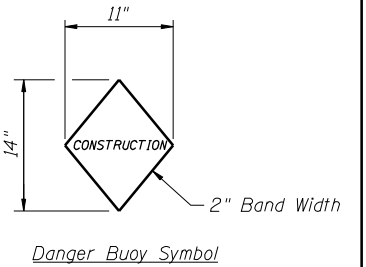


Notes:

The cofferdam shall be designed and constructed according to the requirements of Article 502.06 of the Standard Specifications.

All costs to dewater the cofferdam shall be considered as included with "Cofferdams." All excavation costs within the cofferdam for the placement of riprap, flared end section, and storm sewer shall be considered as included with their respective pay item.

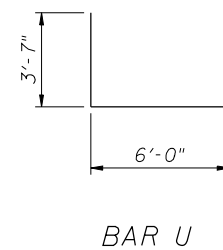
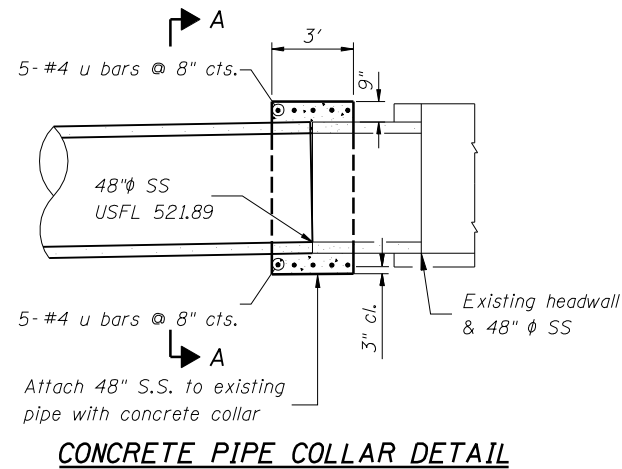
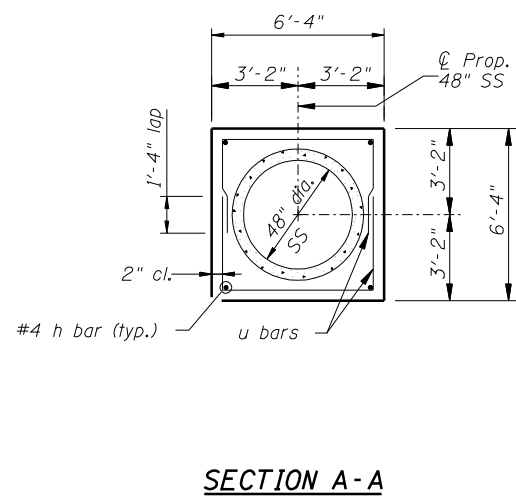
"Cofferdams" is billed on Sheet 6.



BILL OF MATERIAL

Bar	No.	Size	Length	Shape
u	10	#4	13'-2"	U
h	4	#4	2'-8"	H

Item	Unit	Quantity
Reinforcement Bars	Pound	100
Sub-Base Granular Material, Type B	Ton	80
Portland Cement Concrete Base Course 9"	Sq Yd	324
Bituminous Materials (Prime Coat)	Gal	40
Bituminous Concrete Binder Course, Mixture B, Type 2	Ton	34
Bituminous Concrete Surface Course, Mixture D, Class I, Type 2	Ton	34
Pavement Removal	Sq Yd	424
Combination Curb and Gutter Removal	Foot	122
Concrete Collar	Cu Yd	2.4
Combination Concrete Curb and Gutter, Type B-6.24	Foot	122



Designed by JUF checked by RLP
Drawn by JUF checked by RLP

H:\DWG\Projects\Projects\Rockdale\PlanSheets\Pavement Replacement Details.dgn 09/21/26 AM 11/27/2005