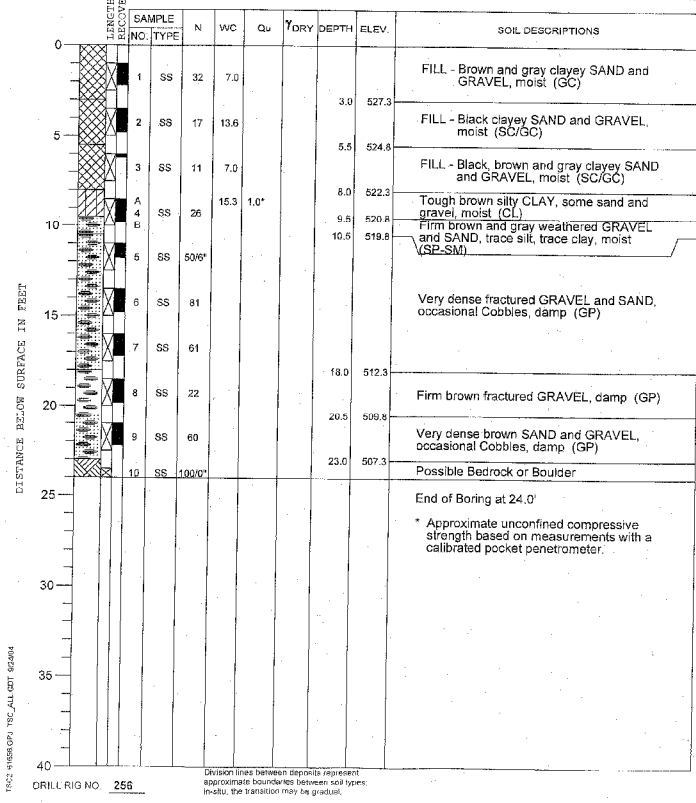
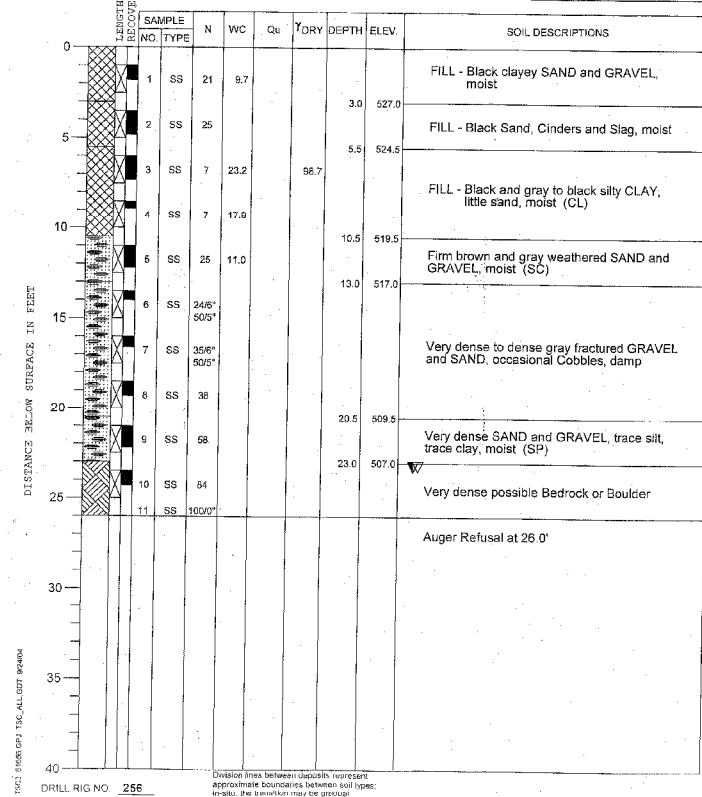


PROJECT Rockdale Drainage Repairs, IL Route 5 & Brandon Road, Rockdale, Illinois
CLIENT IDNR, Springfield, Illinois
BORING 1 DATE STARTED 9-22-04 DATE COMPLETED 9-22-04 JOB L-61,856
ELEVATIONS WATER LEVEL OBSERVATIONS
GROUND SURFACE 530.3 WHILE DRILLING Dry
END OF BORING 506.3 AT END OF BORING Dry
Sta. 9+60, 15' RT
24 HOURS



PROJECT Rockdale Drainage Repairs, IL Route 6 & Brandon Road, Rockdale, Illinois
CLIENT IDNR, Springfield, Illinois
BORING 2 DATE STARTED 9-22-04 DATE COMPLETED 9-22-04 JOB L-61,856
ELEVATIONS WATER LEVEL OBSERVATIONS
GROUND SURFACE 530.0 WHILE DRILLING 23.5'
END OF BORING 504.0 AT END OF BORING 23.5'
Sta. 11+32, 15' RT
24 HOURS



INTENTIONALLY BLANK

INTENTIONALLY BLANK

INTENTIONALLY BLANK

INTENTIONALLY BLANK

INTENTIONALLY BLANK

INTENTIONALLY BLANK

Designed By RLP Checked By TMM
Drawn By RLP Checked By TMM

11/22/2005 09:25:12 AM

H:\0wrProj\Imp\Projects\Rockdale\PlanSheets\Borings.dgn