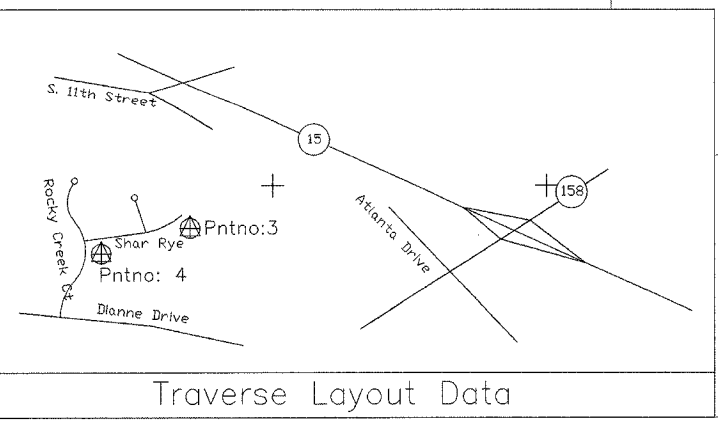
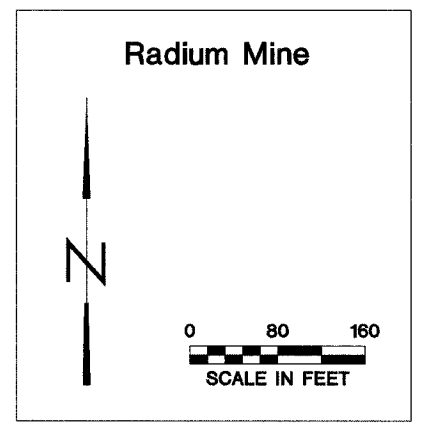


CONSTRUCTION LIMITS		
	NORTHING	EASTING
A	669,965	2,341,725
B	669,990	2,341,675
C	670,050	2,341,725
D	670,200	2,341,525
E	670,300	2,341,450
F	670,500	2,341,250
G	670,493	2,341,123
H	670,620	2,340,684
I	670,738	2,340,620
J	670,700	2,340,865
K	670,619	2,341,027
L	670,670	2,341,060
M	670,630	2,341,125
N	670,572	2,341,105
O	670,533	2,341,176
P	670,653	2,341,297
Q	670,110	2,341,835
R	669,980	2,341,960
S	669,870	2,342,090
T	669,631	2,342,090
U	669,631	2,342,169
V	669,569	2,342,169
W	669,572	2,342,065
X	669,530	2,342,030
Y	669,500	2,342,035
Z	669,490	2,341,970
AA	669,550	2,341,970
BB	669,550	2,342,025
CC	669,630	2,342,070
DD	669,830	2,342,070
EE	669,940	2,341,950
FF	670,050	2,341,840
GG	670,050	2,341,800

Legend	
--- 500' ---	EXISTING CONTOUR
— 500 —	PROPOSED CONTOUR
— — — — —	CONSTRUCTION LIMITS
— — — — —	EDGE OF ROAD
~~~~~	TREELINE
— — — — —	EDGE OF WATER
⊕	SURVEY CONTROL POINT



State of Illinois  
Department of Natural Resources

Radium Mine Group  
Reclamation Project  
AML-GScE-0412  
St. Clair County

Drawn By: M-LF  
Checked By: _____  
Date: 12/15/2005

Existing & Proposed  
Conditions - Radium Mine  
Sheet  
4 of 25