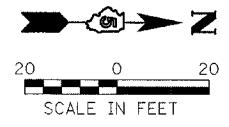
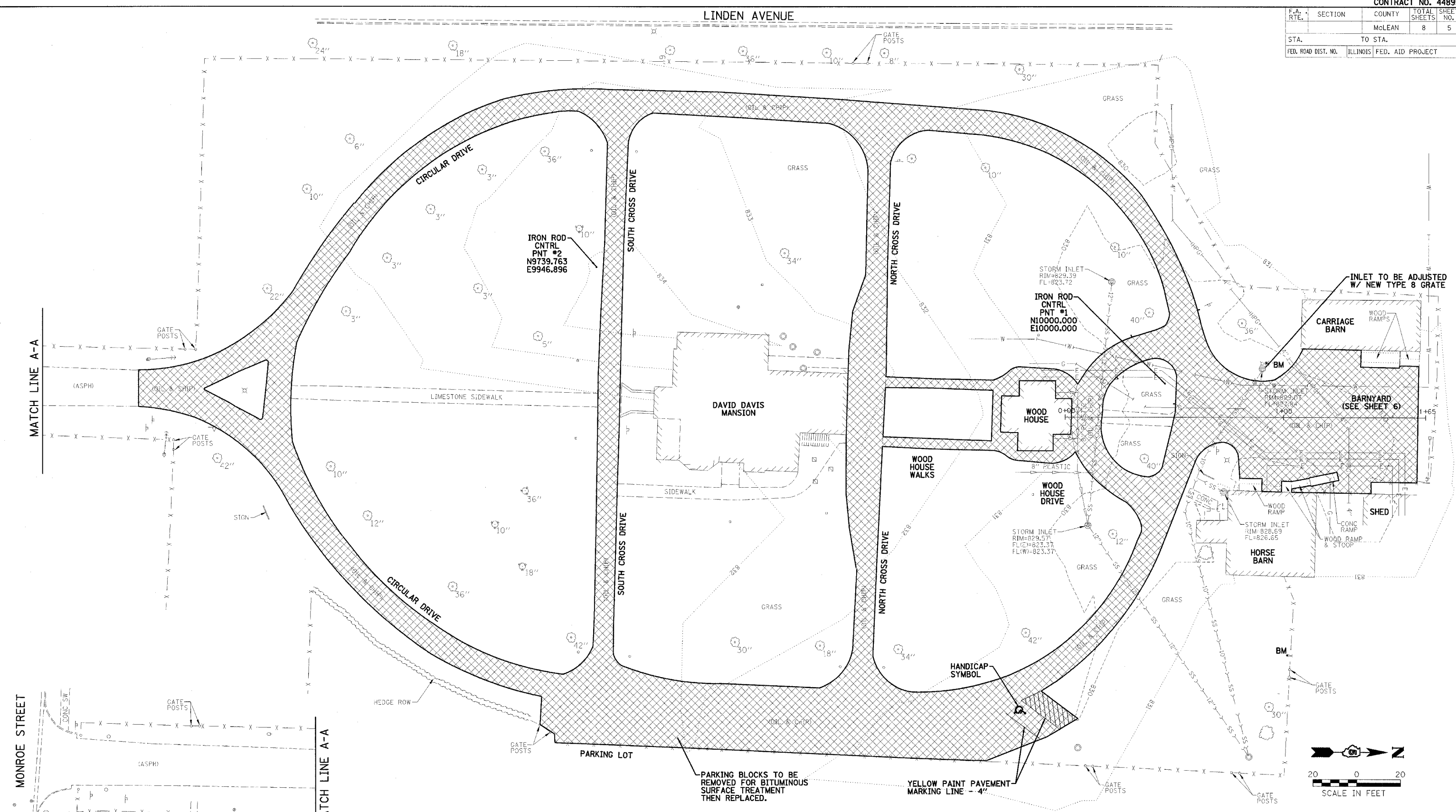



F.A. RTE.	SECTION	COUNTY	TOTAL SHEETS	SHEET NO.
		McLEAN	8	5
STA.		TO STA.		
FED. ROAD DIST. NO.	ILLINOIS	FED. AID PROJECT		

LINDEN AVENUE



LEGEND
 AREA TO RECEIVE BITUMINOUS SURFACE TREATMENT

REVISIONS		
NAME	DATE	
DRR	10/26/05	

ILLINOIS DEPARTMENT OF TRANSPORTATION
 PROPOSED RESURFACING PLAN
 IDOT / IHPA
 DAVID DAVIS MANSION
 STATE HISTORIC SITE
 SCALE: VERT. _____
 DATE _____
 DRAWN BY _____
 CHECKED BY _____

PLOT DATE = #DATE#
 FILE NAME = #FILES#
 PLOT SCALE = #SCALE#
 USER NAME = #USER#

DESIGNED BY PJM	 2709 McGraw Drive Bloomington, Illinois 61704 309/669-8495, 309/669-1671 fax	FILE NO. 24-7567
DRAWN BY DRR		DATE 10/26/05
CHECKED BY PJM		SHEET NO. 5 OF 8