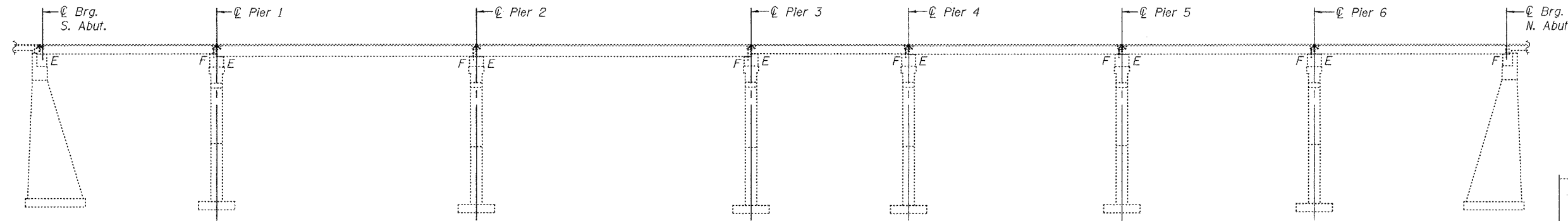


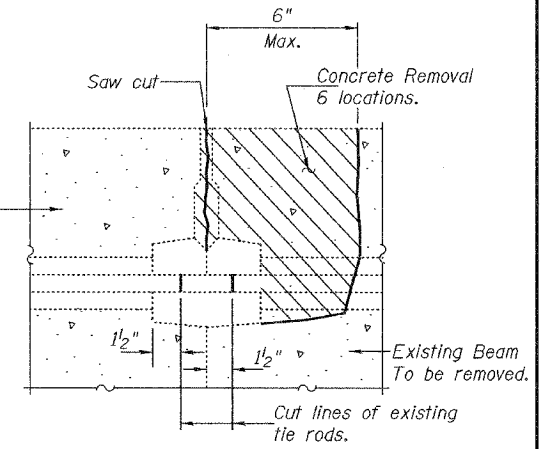
STATE OF ILLINOIS
DEPARTMENT OF TRANSPORTATION

ROUTE NO.	SECTION	COUNTY	TOTAL SHEETS	SHEET NO.
		Cook	12	4
FED. ROAD DIST. NO. 7		ILLINOIS	FED. AID PROJECT-	

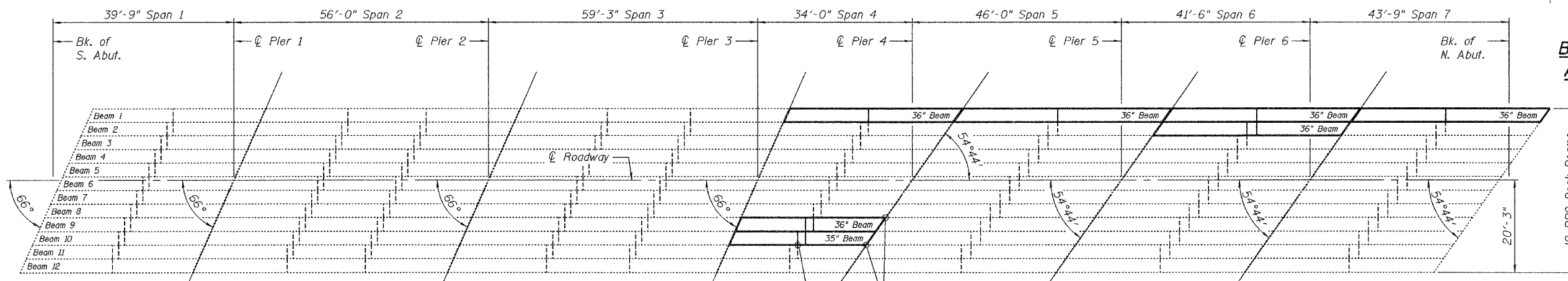
SHEET NO. 1
4 SHEETS
Contract Number: 60A82



ELEVATION



BEAM REMOVAL DETAIL
AT TRANSVERSE TIES



PLAN

GENERAL NOTES

Plan dimensions and details relative to existing structure have been taken from existing plans and are subject to nominal construction variations. It shall be the Contractor's responsibility to verify such dimensions and details in the field and make necessary approved adjustments prior to construction or ordering of materials. Such variations shall not be cause for additional compensation for a change in the scope of the work, however, the Contractor will be paid for the quantity actually furnished at the unit price bid for the work.

Any damage done to the bridge during beam removal shall be repaired by the Contractor. Cost to be included in the cost of "Removal of Existing P.P.C. Deck Beams".

Reinforcement bars shall conform to the requirements of AASHTO M 31 or M 322 Grade 60.

The top surface of the beams shall be finished in accordance with Article 504.06 of the Standard Specifications except that the surface shall not be roughened by brooming. The finished surface shall be free of depressions or high spots with sharp corners, and the top edge of keys shall be rounded or chamfered a minimum of 1/4".

Temporary concrete barrier shall only be anchored into the overlay and not the PPC Deck Beams.

All structural steel shall be shop painted with the inorganic zinc rich primer per AASHTO M300, Type 1. Cost included with Furnishing and Erecting Structural Steel.

Existing reinforcement extending into the removal area shall be cleaned, straightened and incorporated into the new construction. Any reinforcement bars that are damaged during concrete removal shall be replaced with an approved bar splicer or anchorage system. Cost shall be included with Concrete Removal.

For stage construction details see Roadway Plans.

DESIGN STRESSES
PRESTRESS UNITS

(New Construction)
f'c = 5,000 psi
f'cl = 4,000 psi
f's = 270,000 (1/2" low relaxation strands)
f'si = 201,960 (1/2" low relaxation strands)

TOTAL BILL OF MATERIAL

ITEM	UNIT	QUANTITY
Bituminous Concrete Surface Removal	Sq. Yd.	10.9
Waterproofing Membrane System	Sq. Yd.	67.6
Removal of Existing PPC Deck Beams	Sq. Ft.	806
Bituminous Concrete Surface Course, Superpave Mix "D", N 50	Tons	11.4
PC Mortar Fairing Course	Foot	272
PPC Deck Beams (21" Depth)	Sq. Ft.	808
Concrete Removal	Cu. Yd.	1.8
Concrete Superstructure	Cu. Yd.	16.6
Protective Coat	Sq. Yd.	66.3
Furnishing and Erecting Structural Steel	Pound	1,130
Asbestos Bearing Pad Removal	Each	7
Reinforcement Bars, Epoxy Coated	Pound	2,020

DESIGNED	Victor H. Veliz
CHECKED	John A. Manis
DRAWN	Ralph E. Anderson
CHECKED	VHV S.F.B.

November 30, 2005
EXAMINED John A. Manis
ENGINEER OF STRUCTURAL SERVICES
PASSED Ralph E. Anderson
ENGINEER OF BRIDGES AND STRUCTURES



Expires: November 30, 2006

PLAN AND ELEVATION
NORTH BOUND LANES
PULASKI ROAD / BRC R.R.
COOK COUNTY
SN 016-1020